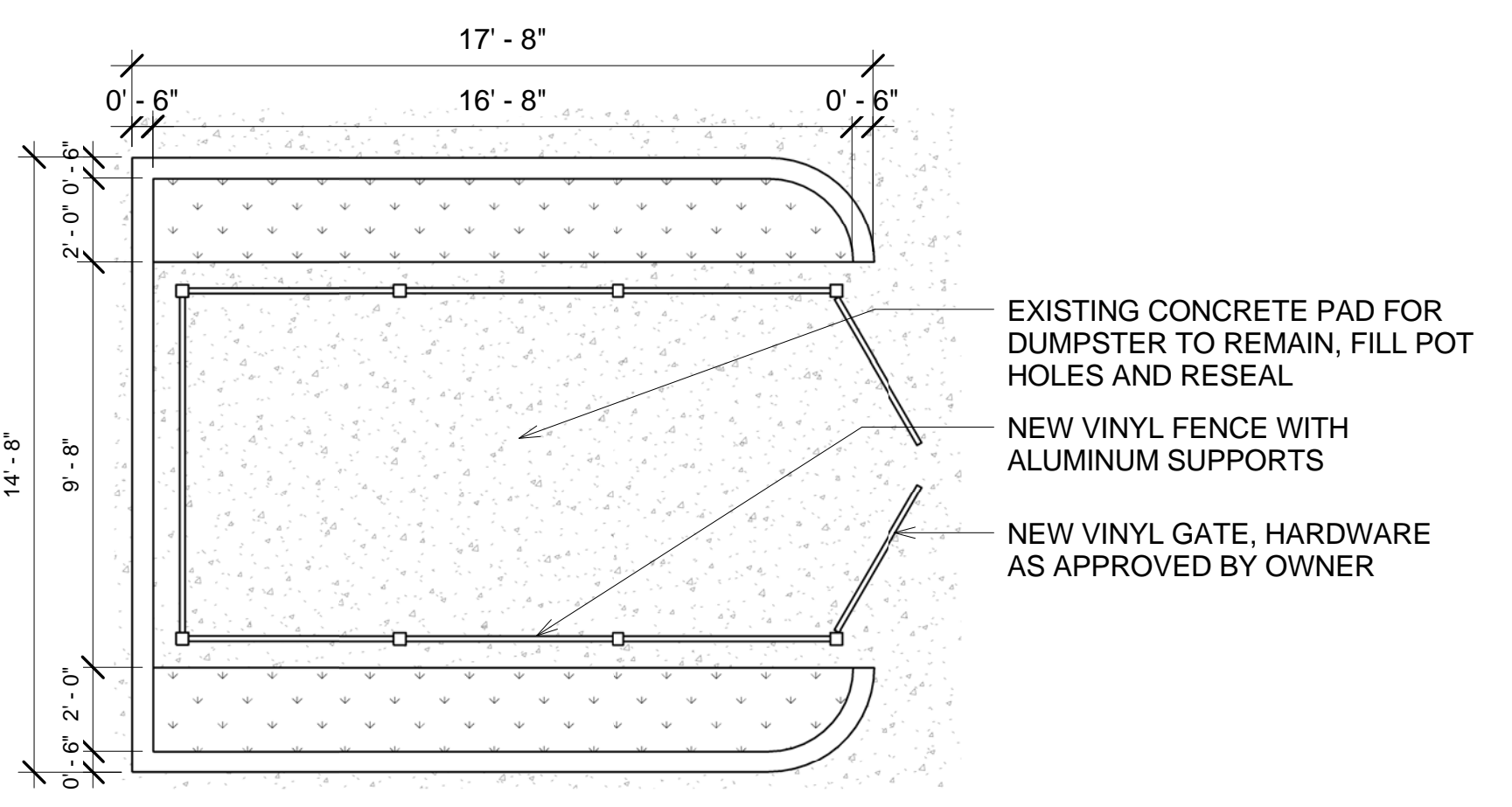
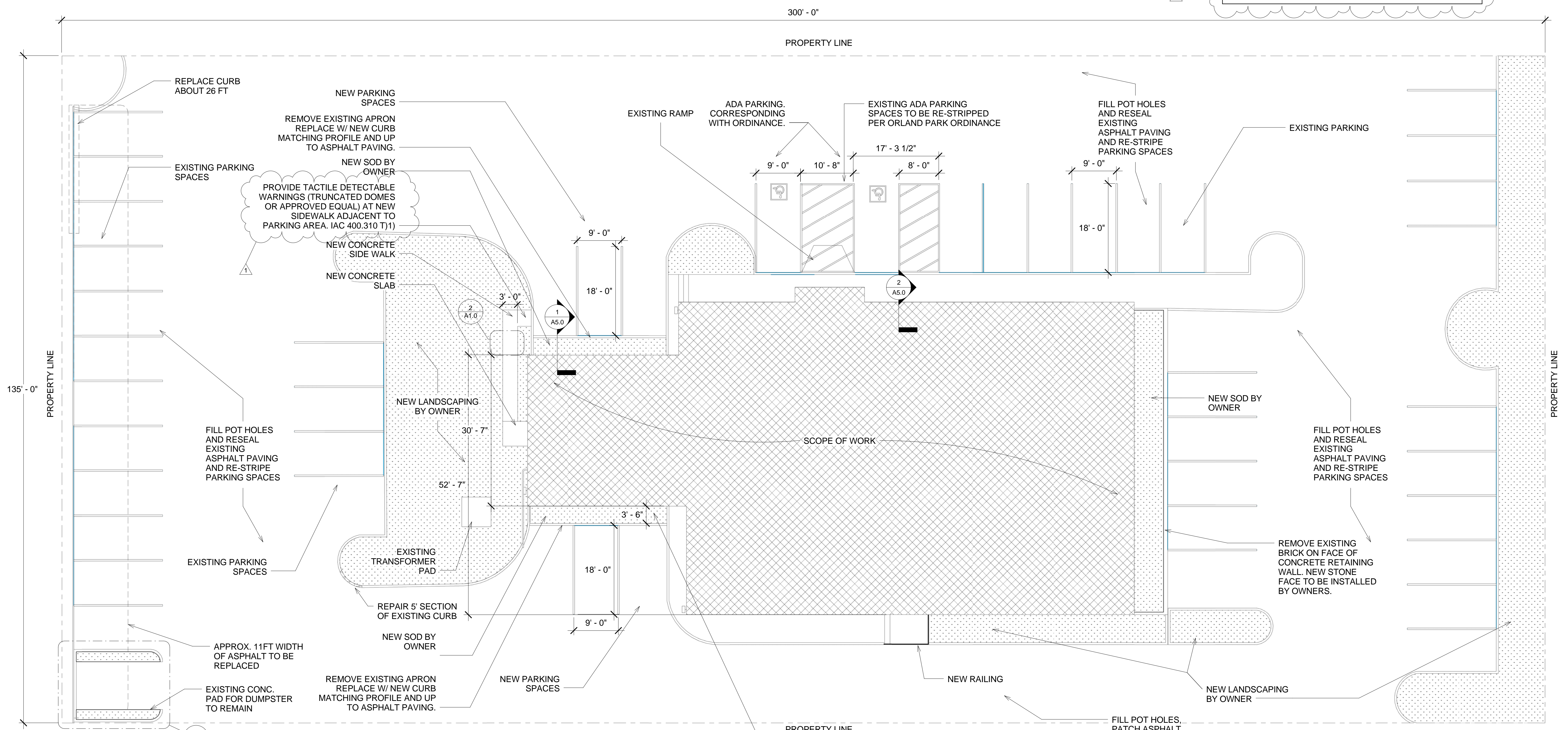
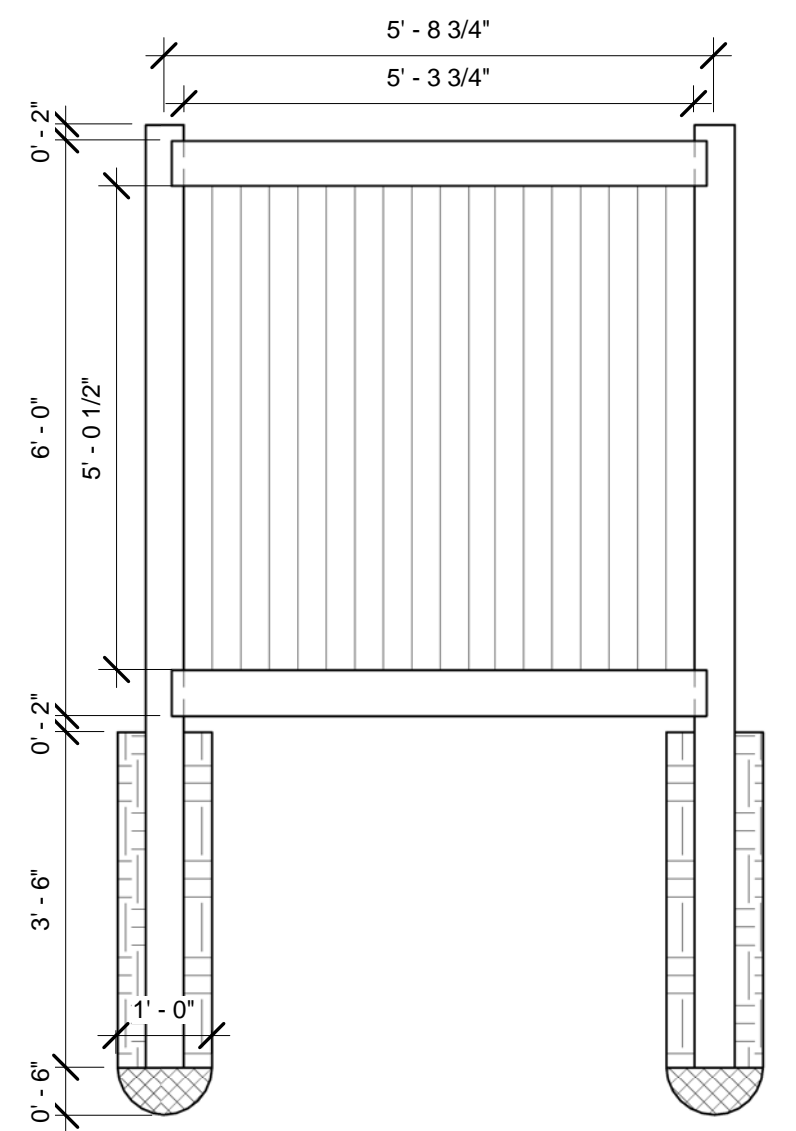


REAR PARKING LOT SHALL BE REPAVED, REPAIRED AND RESTRIPE ACCORDINGLY PER VILLAGE OR ORLAND PARK REQUIREMENTS PROPERTY MAINTENANCE INSPECTORS



4 TRASH ENCLOSURE
1/4" = 1'-0"



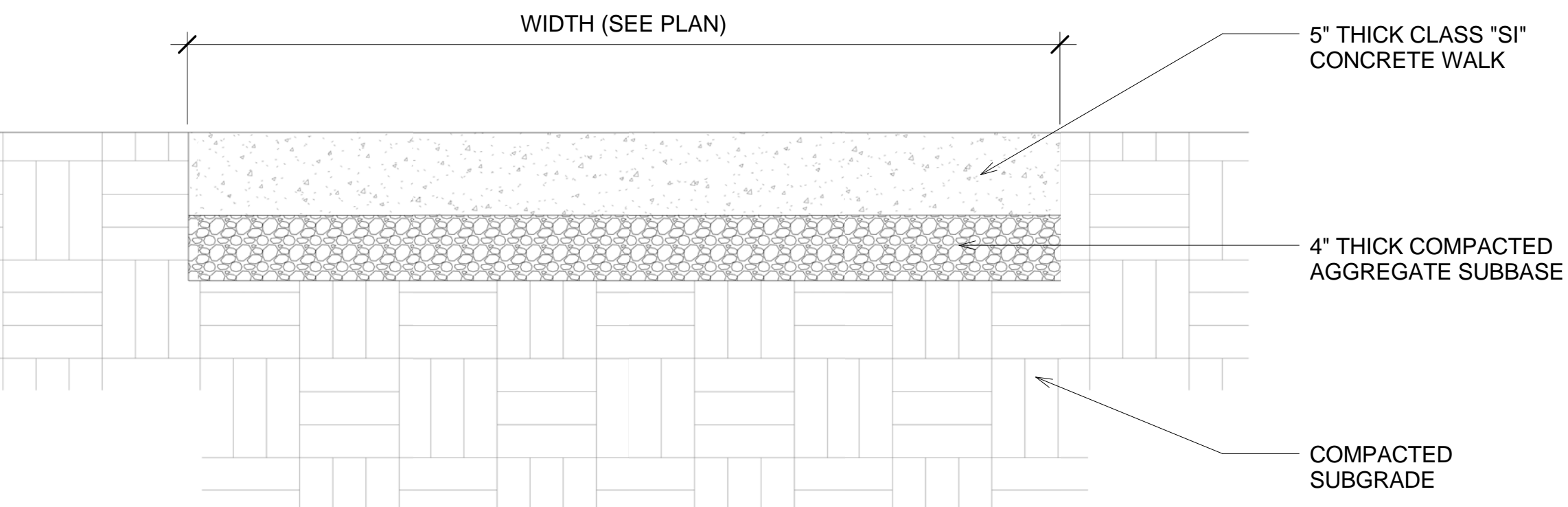
3 FENCE POST DETAIL
1/2" = 1'-0"

TYPICAL SIDEWALK

NOT TO SCALE

NOTES

1. SURFACE TO BE A LIGHT BROOM FINISH AT RIGHT ANGLES TO THE EDGE OF THE SIDEWALK.
2. ASPHALTIC FELT EXPANSION JOINTS SHALL BE PROVIDED 30FT O.C. WITH 1/2" DEEP CONTROL (FALSE) JOINTS 5FT O.C.
3. SIDEWALK THROUGH ENTRANCE SHALL BE 5" THICK WITH 6x6xW1.4xW1.4 WWF



2 Site - Callout 1
1 1/2" = 1'-0"



ISSUED WITH PERMIT
CORRECTIONS
09-03-15
ISSUED FOR PERMIT
08-25-15

15022

A1.0