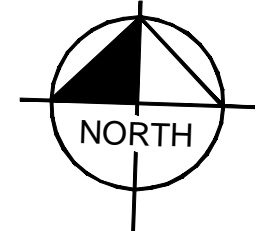
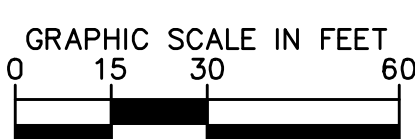
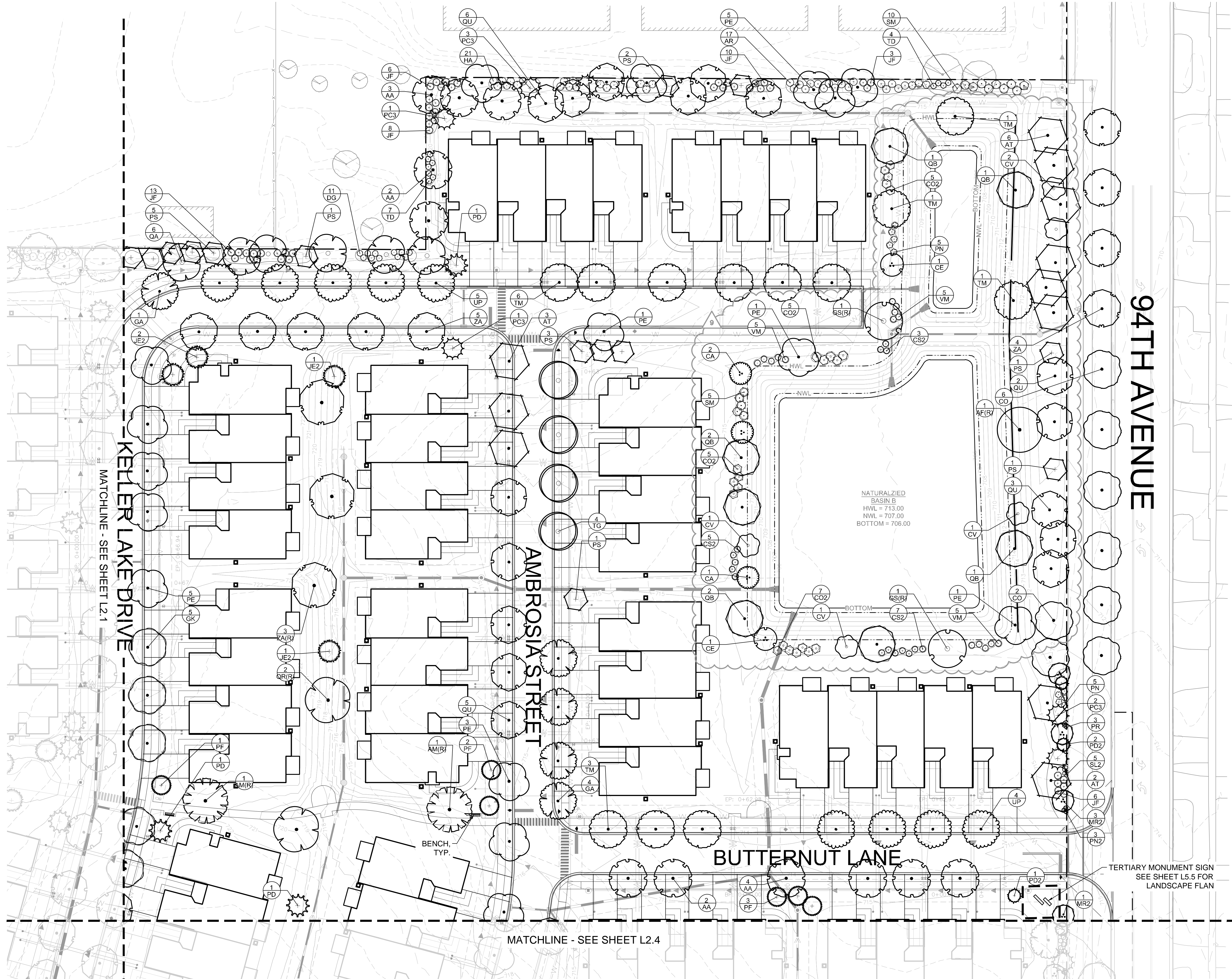


Drawing name: K:\GIS_LIVE\168626000_sr_jacobson_orland_ridge_11.2_Design\CAD\plan\sheet\12.0 - OVERALL LANDSCAPE PLAN.dwg Feb 14, 2020 12:05pm By: spencer.andresen
 This document, together with the concepts and designs presented herein, is an instrument of service, is intended only for the specific purpose and client for which it was prepared. Reuse of and improper reliance on this document without written authorization and adaptation by Kimley-Horn and Associates, Inc. shall be without liability to Kimley-Horn and Associates, Inc.



94TH AVENUE

KELLER LAKE DRIVE
 MATCHLINE - SEE SHEET L2.1

AMBROSIA STREET

BUTTERNUT LANE

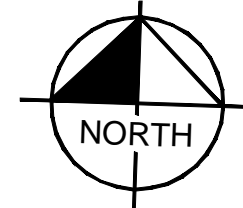
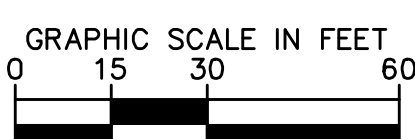
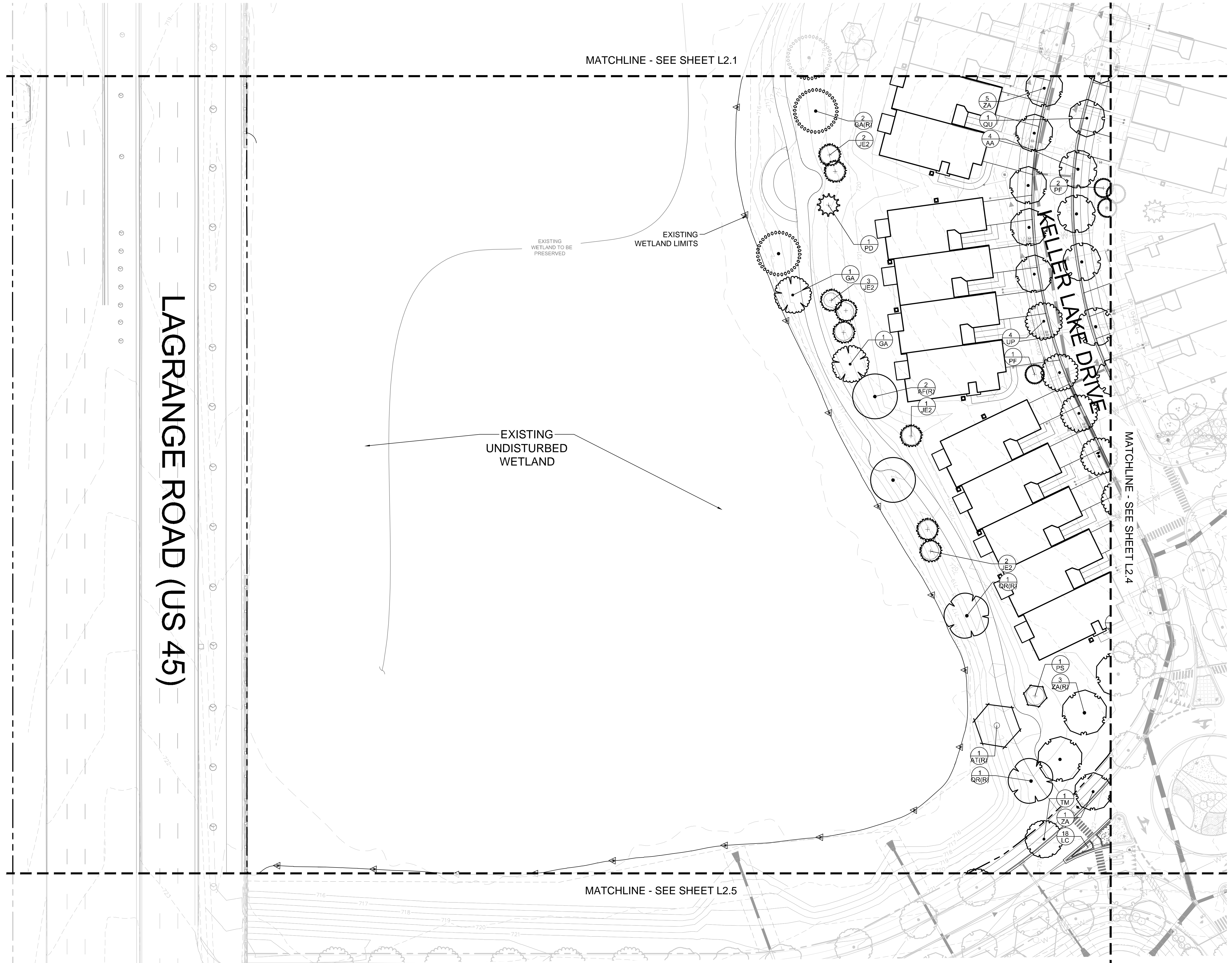
MATCHLINE - SEE SHEET L2.4

TERTIARY MONUMENT SIGN
 SEE SHEET L5.5 FOR
 LANDSCAPE PLAN

SEE L2.9 FOR PLANT SCHEDULE
 SEE L6.0 FOR GROUNDCOVER PLAN

| | | | |
|---|---------------------------------------|---------------|-----------------|
| SCALE: AS NOTED | DESIGNED BY: TBE | DRAWN BY: JDC | CHECKED BY: WAW |
| Kimley»Horn | | | |
| © 2020 KIMLEY-HORN AND ASSOCIATES, INC. 1001 WARENVILLE ROAD, SUITE 350, LISLE, IL 60532 WWW.KIMLEY-HORN.COM | | | |
| S.R. JACOBSON | | | |
| OVERALL LANDSCAPE PLAN | | | |
| ORLAND RIDGE LAGRANGE ROAD & 171 ST STREET ORLAND PARK, IL 60487 | | | |
| ORIGINAL ISSUE: 07/17/2019 | | | |
| KHA PROJECT NO. 168626000 | | | |
| SHEET NUMBER L2.2 | | | |
| NO. | REVISIONS | DATE | BY |
| 1 | REVISED PER VILLAGE/CCDOT COMMENTS | 02/14/20 | WAW |
| 2 | ADDENDUM 1 - LANDSCAPE | 02/06/20 | SKA |
| 3 | REVISED PER IDOT COMMENTS | 02/05/20 | WAW |
| 4 | LANDSCAPE REV PER VILLAGE COMMENTS | 07/09/20 | WAW |
| 5 | LANDSCAPE PER VILLAGE/MWRD/CCDOT COM. | 12/20/19 | WAW |
| 6 | REVISED PER CCOT COMMENTS | 11/21/19 | WAW |
| 7 | REVISED PER VILLAGE/MWRD COMMENTS | 10/15/19 | WAW |

Drawing name: K:\GIS_LIVE\168626000_sr_jacobson_orland_ridge_11.2_Design\CAD\planisheets\final_engineering\L2.3_OVERALL_LANDSCAPE_PLAN Feb 14, 2020 12:05pm by spencer.andresen
 This document, together with the concepts and designs presented herein, is an instrument of service, is intended only for the specific purpose and client for which it was prepared. Reuse of and improper reliance on this document without written authorization and adaptation by Kimley-Horn and Associates, Inc. shall be without liability to Kimley-Horn and Associates, Inc.



LAGRANGE ROAD (US 45)

MATCHLINE - SEE SHEET L2.1

EXISTING UNDISTURBED WETLAND

EXISTING WETLAND TO BE PRESERVED
 EXISTING WETLAND LIMITS

MATCHLINE - SEE SHEET L2.5

MATCHLINE - SEE SHEET L2.4

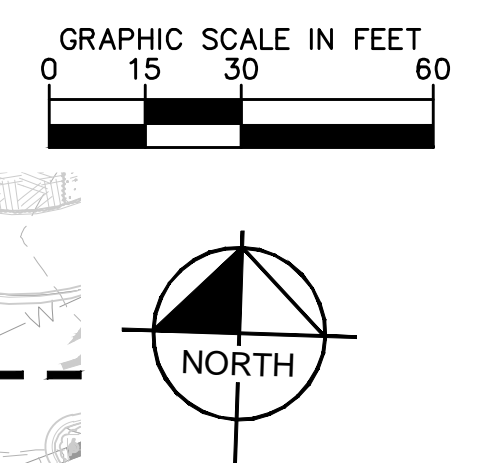
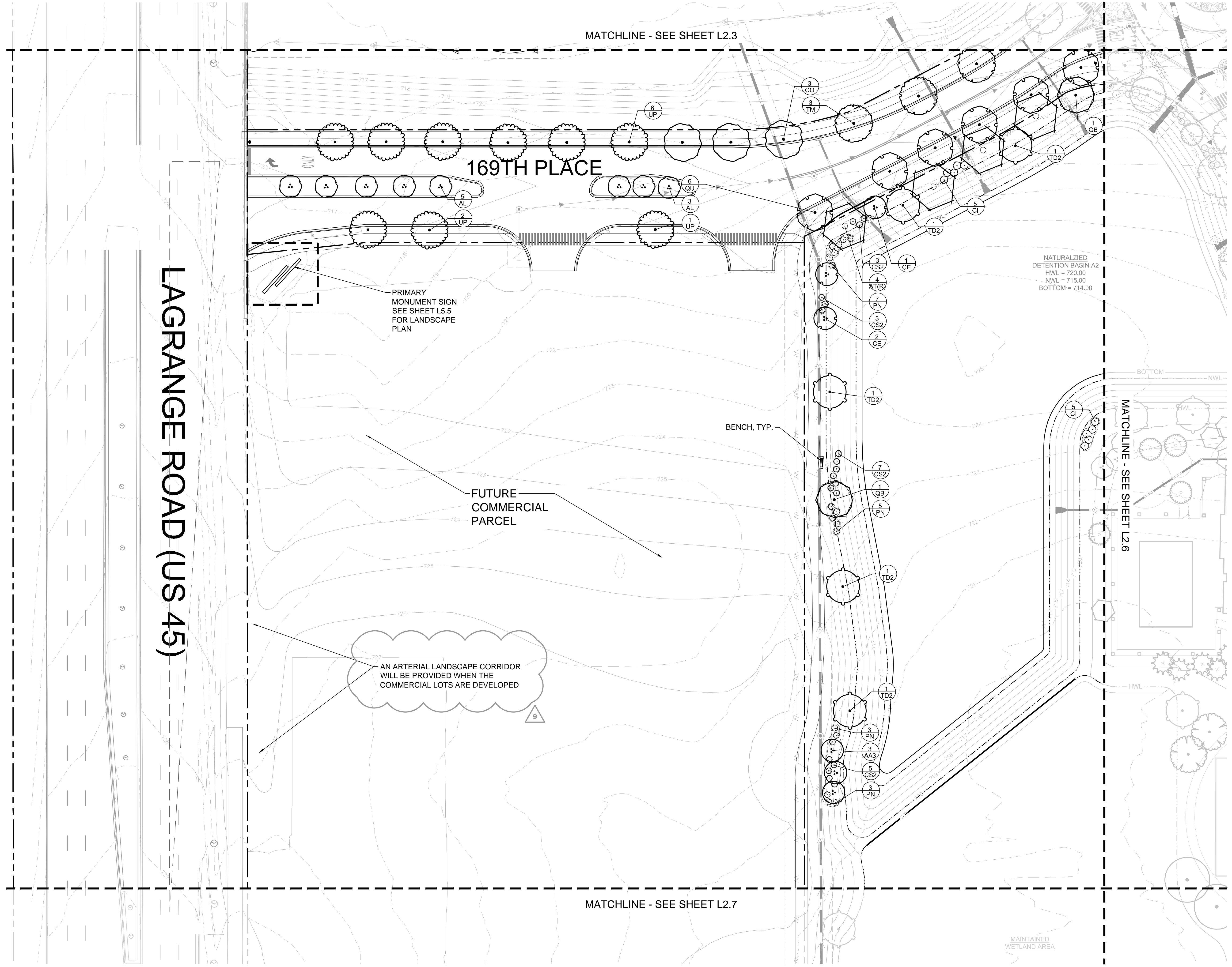
KELLER LAKE DRIVE

SEE L2.9 FOR PLANT SCHEDULE
 SEE L6.0 FOR GROUNDCOVER PLAN

| | | | |
|---|---|---------------|-----------------|
| SCALE: AS NOTED | DESIGNED BY: TIRE | DRAWN BY: JDC | CHECKED BY: WAW |
| SR.JACOBSON | | | |
| OVERALL LANDSCAPE PLAN | | | |
| ORLAND RIDGE LAGRANGE ROAD & 171 ST STREET ORLAND PARK, IL 60487 | | | |
| ORIGINAL ISSUE: 07/17/2019 | | | |
| KHA PROJECT NO. 168626000 | | | |
| SHEET NUMBER L2.3 | | | |
| NO. | REVISIONS | DATE | BY |
| 1 | REVISED PER VILLAGE/MWRD COMMENTS | 10/15/19 | WAW |
| 2 | REVISED PER CCOT COMMENTS | 11/21/19 | WAW |
| 3 | LANDSCAPE REV PER VILLAGE/MWRD/CCDOT COM. | 12/20/19 | WAW |
| 4 | LANDSCAPE REV PER VILLAGE COMMENTS | 01/09/20 | WAW |
| 5 | REVISED PER IDOT COMMENTS | 02/05/20 | WAW |
| 6 | ADDENDUM 1 - LANDSCAPE | 02/14/20 | WAW |

Kimley»Horn
 © 2020 KIMLEY-HORN AND ASSOCIATES, INC.
 1001 WARRENVILLE ROAD, SUITE 350,
 LISLE, IL 60532
 WWW.KIMLEY-HORN.COM

Drawing name: K:\CHS_LIVE\168626000_sr_jacobson_orland_park_11.2_Design\CAD\planisheets\12.0 - OVERALL LANDSCAPE PLAN.dwg Feb 14, 2020 12:05pm by spencer.andresen
 This document, together with the concepts and designs presented herein, is an instrument of service, is intended only for the specific purpose and client for which it was prepared. Reuse of and improper reliance on this document without written authorization and adaptation by Kimley-Horn and Associates, Inc. shall be without liability to Kimley-Horn and Associates, Inc.

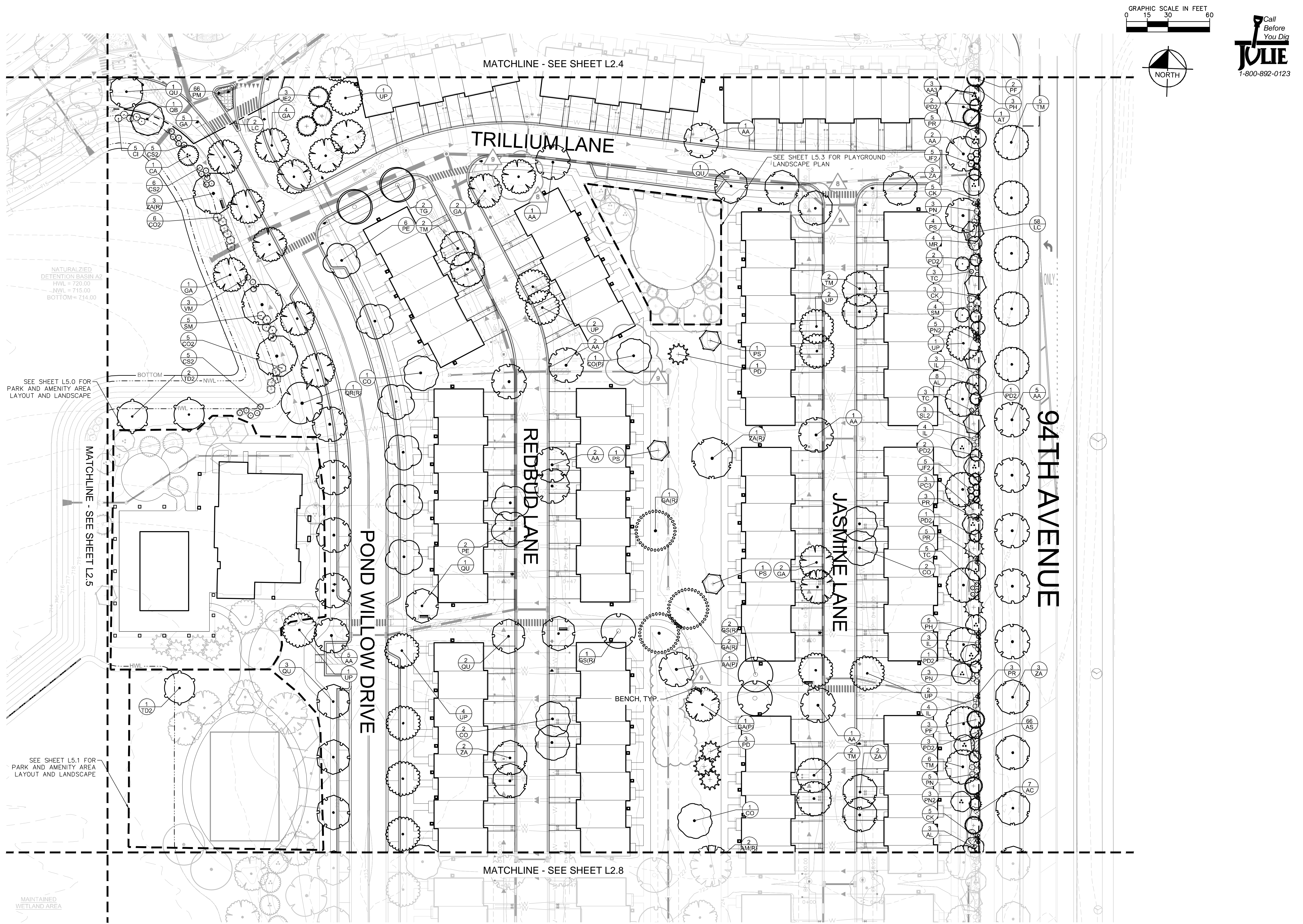


Call Before You Dig
811
 1-800-892-0123

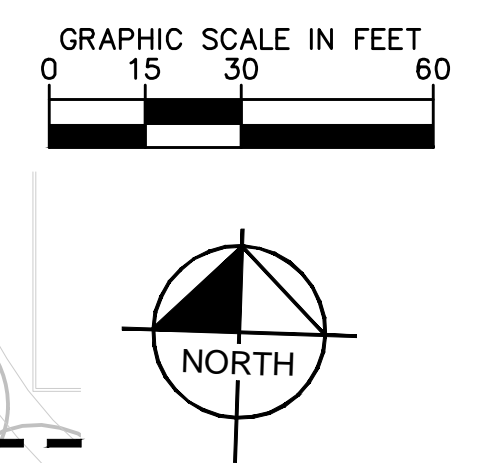
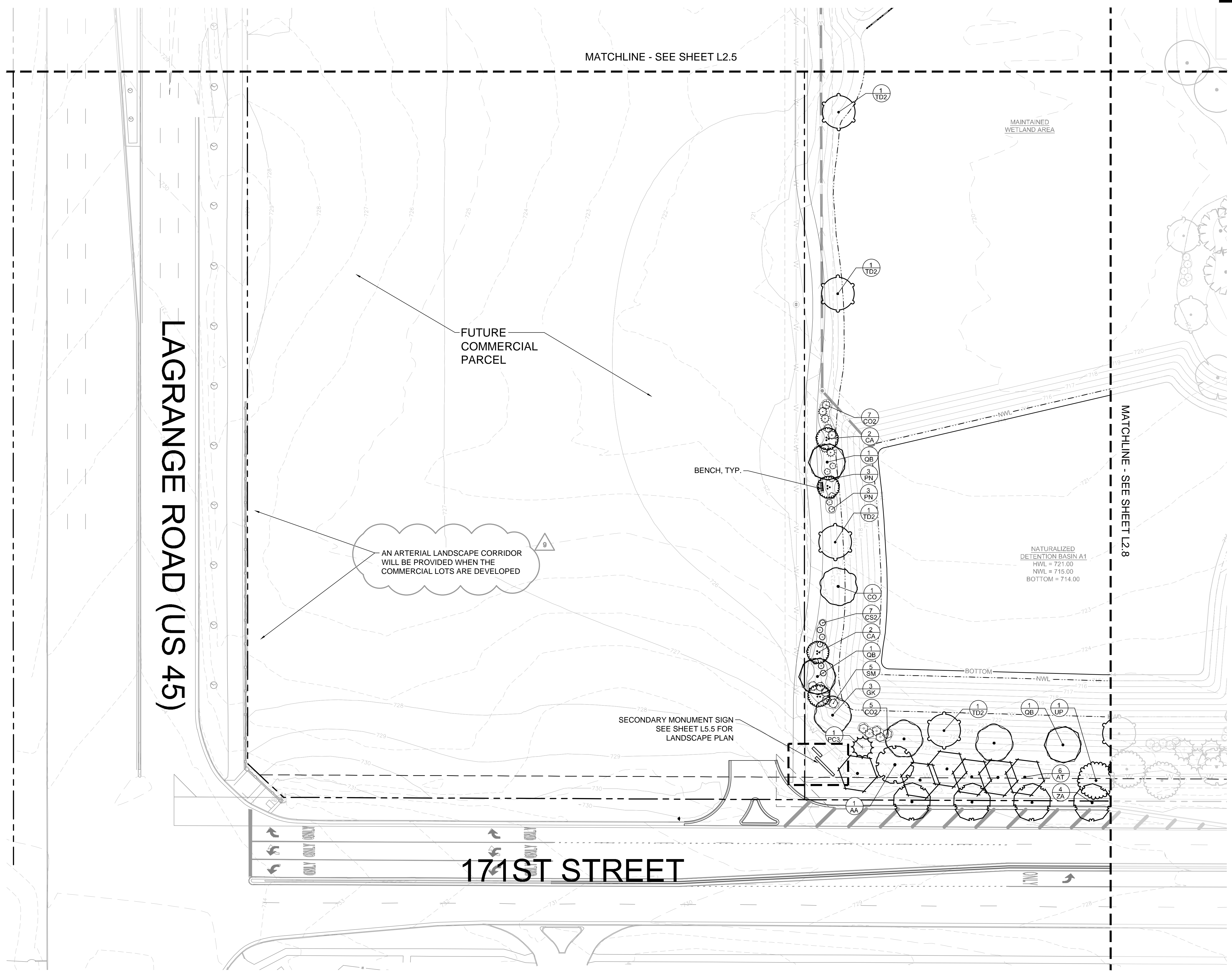
| <p>Kimley»Horn <small>© 2020 KIMLEY-HORN AND ASSOCIATES, INC. 1001 WARRENVILLE ROAD, SUITE 350, Lisle, IL 60532 WWW.KIMLEY-HORN.COM</small></p> | <p>SCALE: AS NOTED DESIGNED BY: TFE DRAWN BY: JDC CHECKED BY: WAW</p> | <p>S.R. JACOBSON <small>CONSULTING ENGINEER</small></p> | <p>OVERALL LANDSCAPE PLAN</p> | <p>ORLAND RIDGE LAGRANGE ROAD & 171 ST STREET ORLAND PARK, IL 60487</p> | <p>ORIGINAL ISSUE: 07/17/2019 KHA PROJECT NO. 168626000 SHEET NUMBER L2.5</p> | | | | | | | | | | | | | | | | | | | | | | | | | | | | | | | |
|--|--|---|--------------------------------------|--|---|----------|-----|----------------------------------|---|----------|-----|------------------------|---|----------|-----|---------------------------|---|----------|-----|------------------------------------|---|----------|-----|-------------------------------------|---|----------|-----|---------------------------|---|----------|-----|-----------------------------------|--|--|--|--|
| <p>REVISIONS</p> <table border="1"> <thead> <tr> <th>NO.</th> <th>DATE</th> <th>BY</th> <th>REVISIONS</th> </tr> </thead> <tbody> <tr> <td>1</td> <td>02/14/20</td> <td>WAW</td> <td>REVIS PER VILLAGE/CCDOT COMMENTS</td> </tr> <tr> <td>2</td> <td>02/06/20</td> <td>SKA</td> <td>ADDENDUM 1 - LANDSCAPE</td> </tr> <tr> <td>3</td> <td>02/05/20</td> <td>WAW</td> <td>REVISED PER IDOT COMMENTS</td> </tr> <tr> <td>4</td> <td>01/09/20</td> <td>WAW</td> <td>LANDSCAPE REV PER VILLAGE COMMENTS</td> </tr> <tr> <td>5</td> <td>12/20/19</td> <td>WAW</td> <td>REVISED PER VILLAGE/MWRD/CCDOT COM.</td> </tr> <tr> <td>6</td> <td>11/21/19</td> <td>WAW</td> <td>REVISED PER CCOT COMMENTS</td> </tr> <tr> <td>7</td> <td>10/15/19</td> <td>WAW</td> <td>REVISED PER VILLAGE/MWRD COMMENTS</td> </tr> </tbody> </table> | NO. | DATE | BY | REVISIONS | 1 | 02/14/20 | WAW | REVIS PER VILLAGE/CCDOT COMMENTS | 2 | 02/06/20 | SKA | ADDENDUM 1 - LANDSCAPE | 3 | 02/05/20 | WAW | REVISED PER IDOT COMMENTS | 4 | 01/09/20 | WAW | LANDSCAPE REV PER VILLAGE COMMENTS | 5 | 12/20/19 | WAW | REVISED PER VILLAGE/MWRD/CCDOT COM. | 6 | 11/21/19 | WAW | REVISED PER CCOT COMMENTS | 7 | 10/15/19 | WAW | REVISED PER VILLAGE/MWRD COMMENTS | | | | |
| NO. | DATE | BY | REVISIONS | | | | | | | | | | | | | | | | | | | | | | | | | | | | | | | | | |
| 1 | 02/14/20 | WAW | REVIS PER VILLAGE/CCDOT COMMENTS | | | | | | | | | | | | | | | | | | | | | | | | | | | | | | | | | |
| 2 | 02/06/20 | SKA | ADDENDUM 1 - LANDSCAPE | | | | | | | | | | | | | | | | | | | | | | | | | | | | | | | | | |
| 3 | 02/05/20 | WAW | REVISED PER IDOT COMMENTS | | | | | | | | | | | | | | | | | | | | | | | | | | | | | | | | | |
| 4 | 01/09/20 | WAW | LANDSCAPE REV PER VILLAGE COMMENTS | | | | | | | | | | | | | | | | | | | | | | | | | | | | | | | | | |
| 5 | 12/20/19 | WAW | REVISED PER VILLAGE/MWRD/CCDOT COM. | | | | | | | | | | | | | | | | | | | | | | | | | | | | | | | | | |
| 6 | 11/21/19 | WAW | REVISED PER CCOT COMMENTS | | | | | | | | | | | | | | | | | | | | | | | | | | | | | | | | | |
| 7 | 10/15/19 | WAW | REVISED PER VILLAGE/MWRD COMMENTS | | | | | | | | | | | | | | | | | | | | | | | | | | | | | | | | | |

SEE L2.9 FOR PLANT SCHEDULE
 SEE L6.0 FOR GROUNDCOVER PLAN

Drawing name: K:\GIS_LIVE\168626000_r_jacobson_orland_ridge_11.2_Design\CAD\plan\sheet\12.0 - OVERALL LANDSCAPE PLAN Feb 14, 2020 12:05pm by spencer.andresen
 This document, together with the concepts and designs presented herein, is an instrument of service, is intended only for the specific purpose and client for which it was prepared. Release of and improper reliance on this document without written authorization and adaptation by Kimley-Horn and Associates, Inc. shall be without liability to Kimley-Horn and Associates, Inc.



Drawing name: K:\CHS_LDEV\168626000_r_jacobson_orland_ridge_11.2_Design\CAD\plan\sheet\12.0 - OVERALL LANDSCAPE PLAN.dwg L2.7 OVERALL LANDSCAPE PLAN Feb 14, 2020 12:05pm By: spencer.andresen
 This document, together with the concepts and designs presented herein, is an instrument of service, is intended only for the specific purpose and client for which it was prepared. Reuse of and improper reliance on this document without written authorization and adaptation by Kimley-Horn and Associates, Inc. shall be without liability to Kimley-Horn and Associates, Inc.



Call Before You Dig
811
 1-800-892-0123

| NO. | REVISIONS | DATE | BY |
|-----|---------------------------------------|----------|-----|
| 1 | REVISED PER VILLAGE/CCDOT COMMENTS | 02/14/20 | WAW |
| 2 | ADDENDUM 1 - LANDSCAPE | 02/06/20 | SKA |
| 3 | REVISED PER IDOT COMMENTS | 02/05/20 | WAW |
| 4 | LANDSCAPE REV PER VILLAGE COMMENTS | 01/09/20 | WAW |
| 5 | LANDSCAPE PER VILLAGE/MWRD/CCDOT COM. | 12/20/19 | WAW |
| 6 | REVISED PER CCOT COMMENTS | 11/21/19 | WAW |
| 7 | REVISED PER VILLAGE/MWRD COMMENTS | 10/15/19 | WAW |

Kimley»Horn
 © 2020 KIMLEY-HORN AND ASSOCIATES, INC.
 1001 WARRENVILLE ROAD, SUITE 350,
 Lisle, IL 60532-4569
 WWW.KIMLEY-HORN.COM

SCALE: AS NOTED
 DESIGNED BY: TRE
 DRAWN BY: JDC
 CHECKED BY: WAW

SR JACOBSON
 CONSULTING ENGINEERS

OVERALL LANDSCAPE PLAN

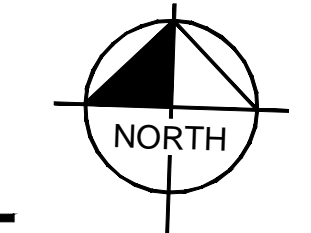
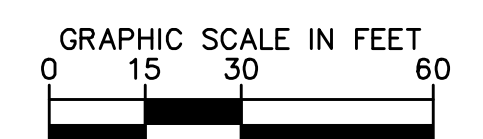
ORLAND RIDGE
 LAGRANGE ROAD & 171ST STREET
 ORLAND PARK, IL 60487

ORIGINAL ISSUE:
 07/17/2019
 KHA PROJECT NO.
 168626000

SHEET NUMBER
L2.7

SEE L2.9 FOR PLANT SCHEDULE
 SEE L6.0 FOR GROUNDCOVER PLAN

Drawing name: K:\GIS_LIVE\168626000_r_jacobson_orland_ridge_11.2_Design\CAD\plan\sheet\l2.8 - OVERALL LANDSCAPE PLAN.dwg Feb 14, 2020 12:05pm by spencer.andresen
 This document, together with the concepts and designs presented herein, is intended only for the specific purpose and client for which it was prepared. Reuse of and improper reliance on this document without written authorization and adaptation by Kimley-Horn and Associates, Inc. shall be without liability to Kimley-Horn and Associates, Inc.



SEE SHEET L5.1 FOR PARK AND AMENITY AREA LAYOUT AND LANDSCAPE

SEE SHEET L5.2 FOR PARK AND AMENITY AREA LAYOUT AND LANDSCAPE

MATCHLINE - SEE SHEET L2.7

MATCHLINE - SEE SHEET L2.6

SEE SHEET L5.3 FOR PLAYGROUND LANDSCAPE PLAN

NATURALIZED DETENTION BASIN A
 HWL = 721.00
 NWL = 715.00
 BOTTOM = 714.00

SECONDARY MONUMENT SIGN
 SEE SHEET L5.5 FOR LANDSCAPING PLAN

94TH AVENUE

171ST STREET

| | | | | | | |
|-----|----------|-------------------------------------|-----|-----------|------|----|
| WAW | 02/14/20 | REVISED PER VILLAGE/CCDOT COMMENTS | NO. | REVISIONS | DATE | BY |
| SKA | 02/06/20 | ADDENDUM 1 - LANDSCAPE | | | | |
| WAW | 02/05/20 | REVISED PER IDOT COMMENTS | | | | |
| WAW | 01/09/20 | LANDSCAPE REV PER VILLAGE COMMENTS | | | | |
| WAW | 12/20/19 | REVISED PER VILLAGE/MWRD/CCDOT COM. | | | | |
| WAW | 11/21/19 | REVISED PER CCOT COMMENTS | | | | |
| WAW | 10/15/19 | REVISED PER VILLAGE/MWRD COMMENTS | | | | |

| | |
|--|------------------|
| Kimley»Horn | |
| © 2020 KIMLEY-HORN AND ASSOCIATES, INC. 1001 WARRENVILLE ROAD, SUITE 350, Lisle, IL 60532, Ph: 630.585.6500 WWW.KIMLEY-HORN.COM | |
| SCALE: AS NOTED | DESIGNED BY: TBE |
| | DRAWN BY: JDC |
| | CHECKED BY: WAW |

| | |
|---|--|
| SR.JACOBSON | OVERALL LANDSCAPE PLAN |
| ORLAND RIDGE LAGRANGE ROAD & 171 ST STREET ORLAND PARK, IL 60487 | SEE L2.9 FOR PLANT SCHEDULE SEE L6.0 FOR GROUNDCOVER PLAN |
| ORIGINAL ISSUE: 07/17/2019 KHA PROJECT NO. 168626000 | L2.8 |
| SHEET NUMBER | |

PLANT SCHEDULE

Drawing name: K:\GIS_LIVE\168626000_r_jacobson_orland_ridge\12.9 OVERALL LANDSCAPE PLANT SCHEDULE Feb 14, 2020 12:05pm by: spencer.orenen
This document, together with the concepts and designs presented herein, is an instrument of service. It is intended only for the specific purpose and client for which it was prepared. Release of and improper reliance on this document without written authorization and adaptation by Kimley-Horn and Associates, Inc. shall be without liability to Kimley-Horn and Associates, Inc.

| TREES | CODE | QTY | BOTANICAL NAME | COMMON NAME | CONT | CAL | SIZE |
|---------------------------|-------|-----|--|--------------------------------|-------|--------------|-----------|
| | AA | 56 | ACER X FREEMANII 'JEFFSRED' | AUTUMN BLAZE MAPLE | B & B | 2.5" CAL MIN | |
| | AT | 35 | ACER FREEMANII 'MARMO' | MARMO FREEMAN MAPLE | B & B | 2.5" CAL MIN | |
| | CO | 28 | CELTIS OCCIDENTALIS | COMMON HACKBERRY | B & B | 2.5" CAL MIN | |
| | GA | 44 | GINKGO BILOBA 'AUTUMN GOLD' TM | MAIDENHAIR TREE | B & B | 2.5" CAL MIN | |
| | GK | 28 | GYMNOCLADUS DIOICA | KENTUCKY COFFEE TREE | B & B | 2.5" CAL MIN | |
| | PE | 44 | PLATANUS X ACERIFOLIA 'EXCLAMATION' TM | EXCLAMATION LONDON PLANE TREE | B & B | 2.5" CAL MIN | |
| | QA | 15 | QUERCUS ALBA | WHITE OAK | B & B | 2.5" CAL MIN | |
| | QB | 16 | QUERCUS BICOLOR | SWAMP WHITE OAK | B & B | 2.5" CAL MIN | |
| | QU | 53 | QUERCUS RUBRA | RED OAK | B & B | 2.5" CAL MIN | |
| | TD2 | 15 | TAXODIUM DISTICHUM | BALD CYPRESS | B & B | 2.5" CAL MIN | |
| | TG | 13 | TILIA CORDATA 'GREENSPIRE' | GREENSPIRE LITTLELEAF LINDEN | B & B | 2.5" CAL MIN | |
| | TM | 59 | TILIA AMERICANA 'MCKSENTRY' | SENTRY LINDEN | B & B | 2.5" CAL MIN | |
| | UP | 56 | ULMUS AMERICANA 'PRINCETON' | AMERICAN ELM | B & B | 2.5" CAL MIN | |
| | ZA | 56 | ZELKOVA SERRATA 'AUTUMN GLOW' | AUTUMN GLOW JAPANESE ZELKOVA | B & B | 2.5" CAL MIN | |
| EVERGREEN TREES | CODE | QTY | BOTANICAL NAME | COMMON NAME | CONT | CAL | SIZE |
| | JE2 | 31 | JUNIPERUS VIRGINIANA | EASTERN RED CEDAR | B & B | | 6' HT MIN |
| | JF2 | 23 | JUNIPERUS CHINENSIS 'FAIRVIEW' | FAIRVIEW JUNIPER | B & B | | 6' HT MIN |
| | PC3 | 30 | PICEA PUNGENS | COLORADO SPRUCE | B & B | | 6' HT MIN |
| | PD | 27 | PSEUDOTSUGA MENZIESII | DOUGLAS FIR | B & B | | 6' HT MIN |
| | PD2 | 42 | PICEA GLAUCA 'DENSATA' | BLACK HILLS SPRUCE | B & B | | 6' HT MIN |
| | PF | 39 | PINUS FLEXILIS 'VANDERWOLF'S PYRAMID' | VANDERWOLF'S PYRAMID PINE | B & B | | 6' HT MIN |
| | PS | 43 | PINUS STROBUS | WHITE PINE | B & B | | 6' HT MIN |
| ORNAMENTAL TREES | CODE | QTY | BOTANICAL NAME | COMMON NAME | CONT | CAL | SIZE |
| | AA3 | 7 | AMELANCHIER CANADENSIS 'AUTUMN BRILLIANCE' | AUTUMN BRILLIANCE SERVICEBERRY | B & B | MULTI-TRUNK | 6' HT MIN |
| | AL | 20 | AMELANCHIER LAEVIS 'LUSTRE' | LUSTRE ALLEGHENY SERVICEBERRY | B & B | MULTI-TRUNK | 6' HT MIN |
| | CA | 11 | CARPINUS CAROLINIANA | AMERICAN HORNBEAM | B & B | MULTI-TRUNK | 6' HT MIN |
| | CE | 6 | CERCIS CANADENSIS | EASTERN REDBUD | B & B | MULTI-TRUNK | 6' HT MIN |
| | CV | 14 | CRATAEGUS CRUS-GALLI INERMIS TM | THORNLESS COCKSPUR HAWTHORN | B & B | MULTI-TRUNK | 6' HT MIN |
| | MR | 13 | MALUS X 'ROYAL RAINDROPS' | ROYAL RAINDROPS CRABAPPLE | B & B | SINGLE STEM | 6' HT MIN |
| | MR2 | 10 | MAGNOLIA STELLATA 'ROYAL STAR' | ROYAL STAR MAGNOLIA | B & B | MULTI-TRUNK | 6' HT MIN |
| | SI | 14 | SYRINGA RETICULATA 'IVORY SILK' | IVORY SILK JAPANESE TREE LILAC | B & B | MULTI-TRUNK | 6' HT MIN |
| PARKWAY REPLACEMENT TREES | CODE | QTY | BOTANICAL NAME | COMMON NAME | CONT | CAL | SIZE |
| | AA(P) | 1 | ACER X FREEMANII 'JEFFSRED' | AUTUMN BLAZE MAPLE | B & B | 2.5" CAL MIN | |
| | CO(P) | 3 | CELTIS OCCIDENTALIS | COMMON HACKBERRY | B & B | 2.5" CAL MIN | |
| | GA(P) | 1 | GINKGO BILOBA 'AUTUMN GOLD' TM | MAIDENHAIR TREE | B & B | 2.5" CAL MIN | |
| | TD(P) | 3 | TAXODIUM DISTICHUM | BALD CYPRESS | B & B | 2.5" CAL MIN | |
| REPLACEMENT TREES | CODE | QTY | BOTANICAL NAME | COMMON NAME | CONT | CAL | SIZE |
| | AF(R) | 9 | ACER RUBRUM 'FRANK JR.' | REDPOINTE MAPLE | B & B | 4" CAL MIN | |
| | AM(R) | 9 | ACER MIYABEI 'MORTON' TM | MIYABEI MAPLE | B & B | 4" CAL MIN | |
| | AT(R) | 10 | ACER FREEMANII 'AUTUMN BLAZE' | AUTUMN BLAZE MAPLE | B & B | 4" CAL MIN | |
| | GA(R) | 7 | GINKGO BILOBA 'AUTUMN GOLD' TM | MAIDENHAIR TREE | B & B | 4" CAL MIN | |
| | GS(R) | 10 | GLEDITSIA TRIACANTHOS INERMIS 'SHADEMASTER' TM | SHADEMASTER LOCUST | B & B | 4" CAL MIN | |
| | QR(R) | 10 | QUERCUS RUBRA | RED OAK | B & B | 4" CAL MIN | |
| | ZA(R) | 10 | ZELKOVA SERRATA 'AUTUMN GLOW' | AUTUMN GLOW JAPANESE ZELKOVA | B & B | 4" CAL MIN | |

| SHRUBS | CODE | QTY | BOTANICAL NAME | COMMON NAME | CONT | SPACING | SIZE |
|------------------------|------|-----|---|----------------------------------|------|----------|------------|
| | AR | 20 | ARONIA ARBUTIFOLIA | RED CHOKEBERRY | - | SEE PLAN | 24" HT MIN |
| | BM | 32 | BUDDLEJA X 'MISS RUBY' | BUTTERFLY BUSH | - | SEE PLAN | 36" HT MIN |
| | CI | 49 | CORNUS SERICEA 'ISANTI' | ISANTI REDOSIER DOGWOOD | - | SEE PLAN | 24" HT MIN |
| | CO2 | 72 | CEPHALANTHUS OCCIDENTALIS | BUTTONBUSH | - | SEE PLAN | 36" HT MIN |
| | CS2 | 89 | CORNUS SERICEA 'CARDINAL' | 'CARDINAL' RED-TWIG DOGWOOD | - | SEE PLAN | 36" HT MIN |
| | DG | 11 | DIERVILLA RIVULARIS 'G2X885411' | KODIAK RED BUSH HONEYSUCKLE | - | SEE PLAN | 24" HT MIN |
| | HA | 21 | HYDRANGEA ARBORESCENS 'ANNABELLE' | ANNABELLE SMOOTH HYDRANGEA | - | SEE PLAN | 24" HT MIN |
| | IL | 42 | ITEA VIRGINICA 'LITTLE HENRY' TM | LITTLE HENRY VIRGINIA SWEETSPIRE | - | SEE PLAN | 18" HT MIN |
| | JF | 46 | JUNIPERUS CHINENSIS 'SEA GREEN' | SEA GREEN JUNIPER | - | SEE PLAN | 24" SPREAD |
| | PN | 65 | PHYSOCARPUS OPULIFOLIUS 'SUMMER WINE' | SUMMER WINE NINEBARK | - | SEE PLAN | 36" HT MIN |
| | R3 | 27 | ROSA X 'RADRAZZ' | KNOCK OUT SHRUB ROSE | - | SEE PLAN | 18" HT MIN |
| | RB | 6 | RHUS TYPHINA 'BALTIGER' TM | TIGER EYES SUMAC | - | SEE PLAN | 36" HT MIN |
| | SM | 49 | SYRINGA MEYERI 'PALIBIN' | DWARF KOREAN LILAC | - | SEE PLAN | 36" HT MIN |
| | TC | 26 | THUJA OCCIDENTALIS 'CONGABE' TM | FIRE CHIEF ARBORVITAE | - | SEE PLAN | 24" HT MIN |
| | TD | 11 | TAXUS X MEDIA 'DENSIFORMIS' | DENSE YEW | - | SEE PLAN | 24" HT MIN |
| | VM | 24 | VIBURNUM DENTATUM 'BLUE MUFFIN' | SOUTHERN ARROWWOOD | - | SEE PLAN | 24" HT MIN |
| GRASSES | CODE | QTY | BOTANICAL NAME | COMMON NAME | CONT | SPACING | SIZE |
| | CK | 30 | CALAMAGROSTIS X ACUTIFLORA 'KARL FOERSTER' | FEATHER REED GRASS | #1 | SEE PLAN | |
| | PH | 31 | PANICUM VIRGATUM 'HEAVY METAL' | BLUE SWITCH GRASS | #1 | SEE PLAN | |
| | PN2 | 32 | PANICUM VIRGATUM 'NORTHWIND' | SWITCH GRASS | #1 | SEE PLAN | |
| | PR | 42 | PANICUM VIRGATUM 'ROTSTRAHLBUSCH' | ROTSTRAHLBUSCH SWITCH GRASS | #2 | SEE PLAN | |
| | SL2 | 38 | SCHIZACHYRIUM SCOPARIUM | LITTLE BLUESTEM GRASS | #2 | SEE PLAN | |
| PERENNIALS AND GRASSES | CODE | QTY | BOTANICAL NAME | COMMON NAME | CONT | SPACING | |
| | AB | 70 | AMSONIA TABERNAEMONTANA 'BLUE ICE' | BLUE ICE STAR FLOWER | #1 | 24" o.c. | |
| | AC | 53 | ANEMONE CANADENSIS | CANADIAN ANEMONE | #1 | 36" o.c. | |
| | AS | 190 | ASCLEPIAS SYRIACA | COMMON MILKWEED | #1 | 12" o.c. | |
| | AS2 | 39 | ALLIUM X 'SUMMER BEAUTY' | SUMMER BEAUTY ALLIUM | #1 | 24" o.c. | |
| | LC | 217 | LIRIOPE SPICATA | CREeping LILY TURF | #1 | 18" o.c. | |
| | PM | 188 | PERENNIAL MIX 50% ECHINACEA 'PICA BELLA', 50% RUDBECKIA FULGIDA VAR. SPECIOSA | | #1 | 18" o.c. | |
| | PM2 | 120 | PERENNIAL MIX 2 50% ALLIUM 'SUMMER BEAUTY', 50% SPOROBOLUS HETEROLEPIS 'TARA' | | #1 | 24" o.c. | |
| | PM3 | 159 | PERENNIAL MIX 3 33% ECHINACEA PURPUREA 'PICA BELLA', 33% RUDBECKIA FULGIDA 'GOLDSTURM', 33% LIATRIS SPICATA 'KOBOLD' | | #1 | 24" o.c. | |
| | PS3 | 209 | PANICUM VIRGATUM 'SHENANDOAH' | SWITCH GRASS | #1 | 18" o.c. | |
| | SH2 | 141 | SPOROBOLUS HETEROLEPIS 'TARA' | DWARF PRAIRIE DROPSEED | #1 | 18" o.c. | |
| | SM2 | 19 | SALVIA NEMOROSA 'MAY NIGHT' | MAY NIGHT SAGE | #1 | 24" o.c. | |



| | | | |
|--|------------------|---------------|-----------------|
| SCALE: AS NOTED | DESIGNED BY: TBE | DRAWN BY: JDC | CHECKED BY: WAW |
| Kimley»Horn © 2020 KIMLEY-HORN AND ASSOCIATES, INC. 1001 WARENVILLE ROAD, SUITE 300, LISLE, IL 60532-4550 WWW.KIMLEY-HORN.COM | | | |
| ORLAND RIDGE LANDSCAPE PLANT SCHEDULE | | | |
| LAGRANGE ROAD & 171 ST STREET ORLAND PARK, IL 60487 | | | |
| ORIGINAL ISSUE: 07/17/2019 | | | |
| KHA PROJECT NO. 168626000 | | | |
| SHEET NUMBER | | | |
| L2.9 | | | |

SEE L6.0 FOR GROUND COVER PLAN