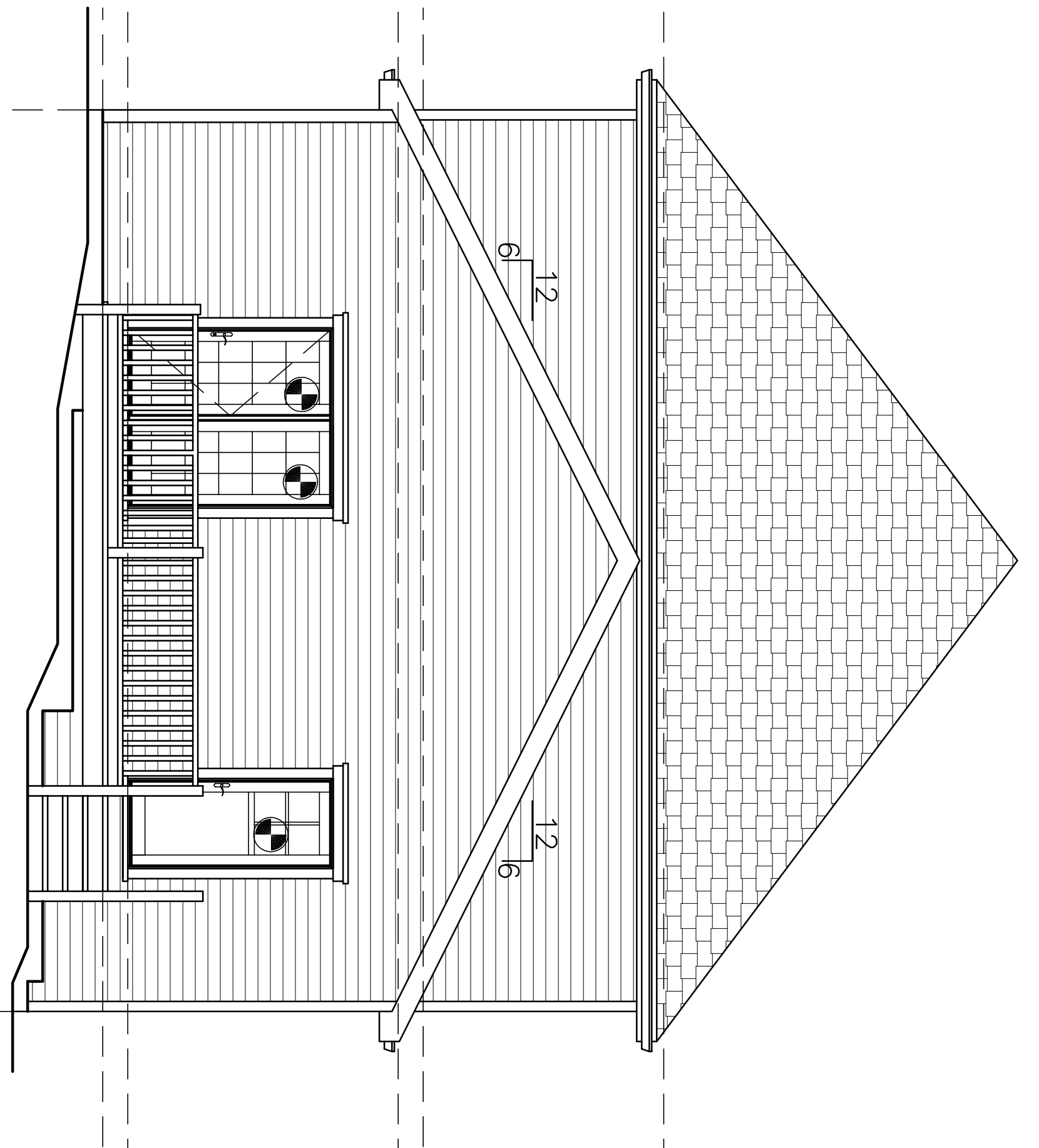
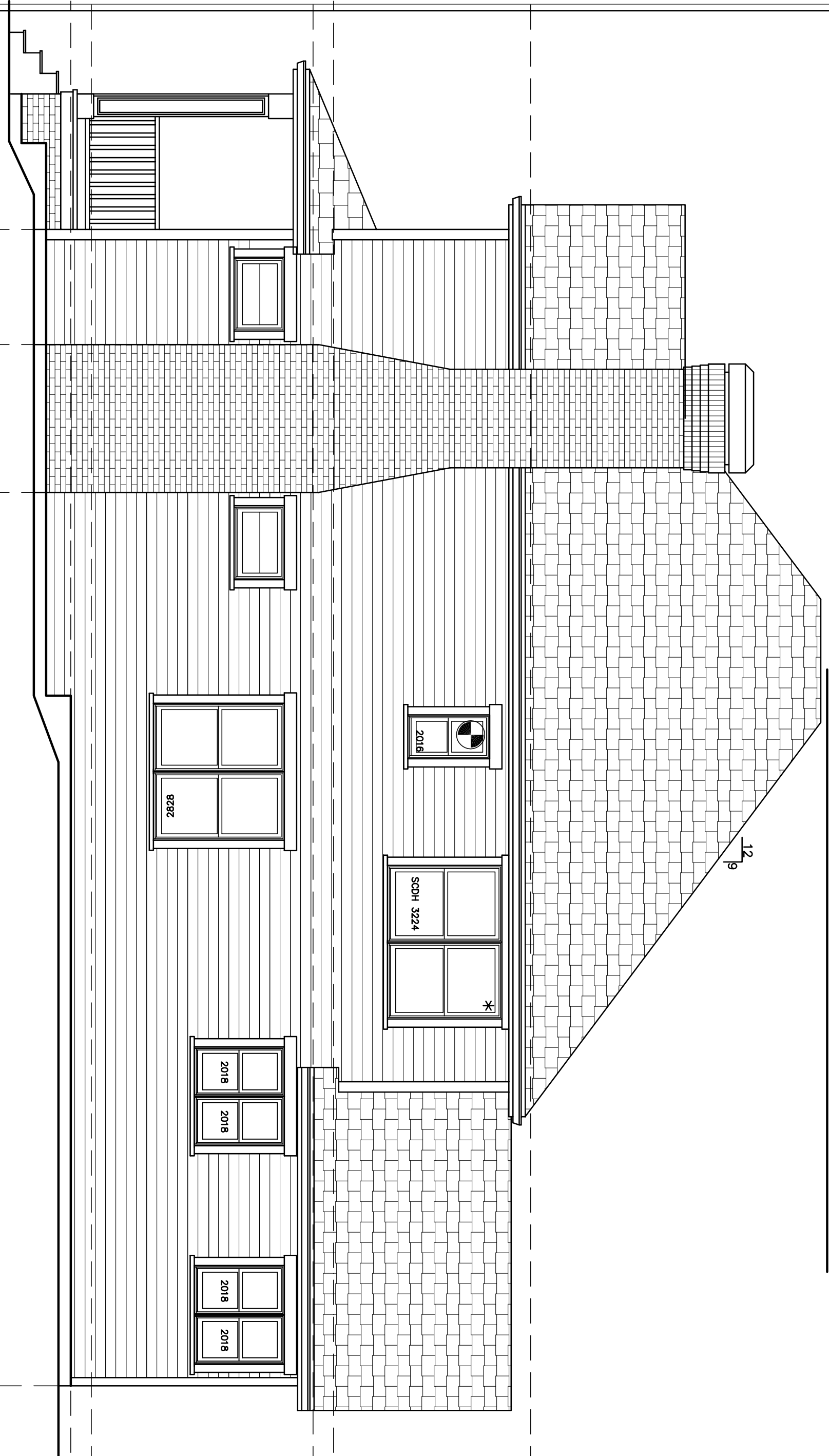




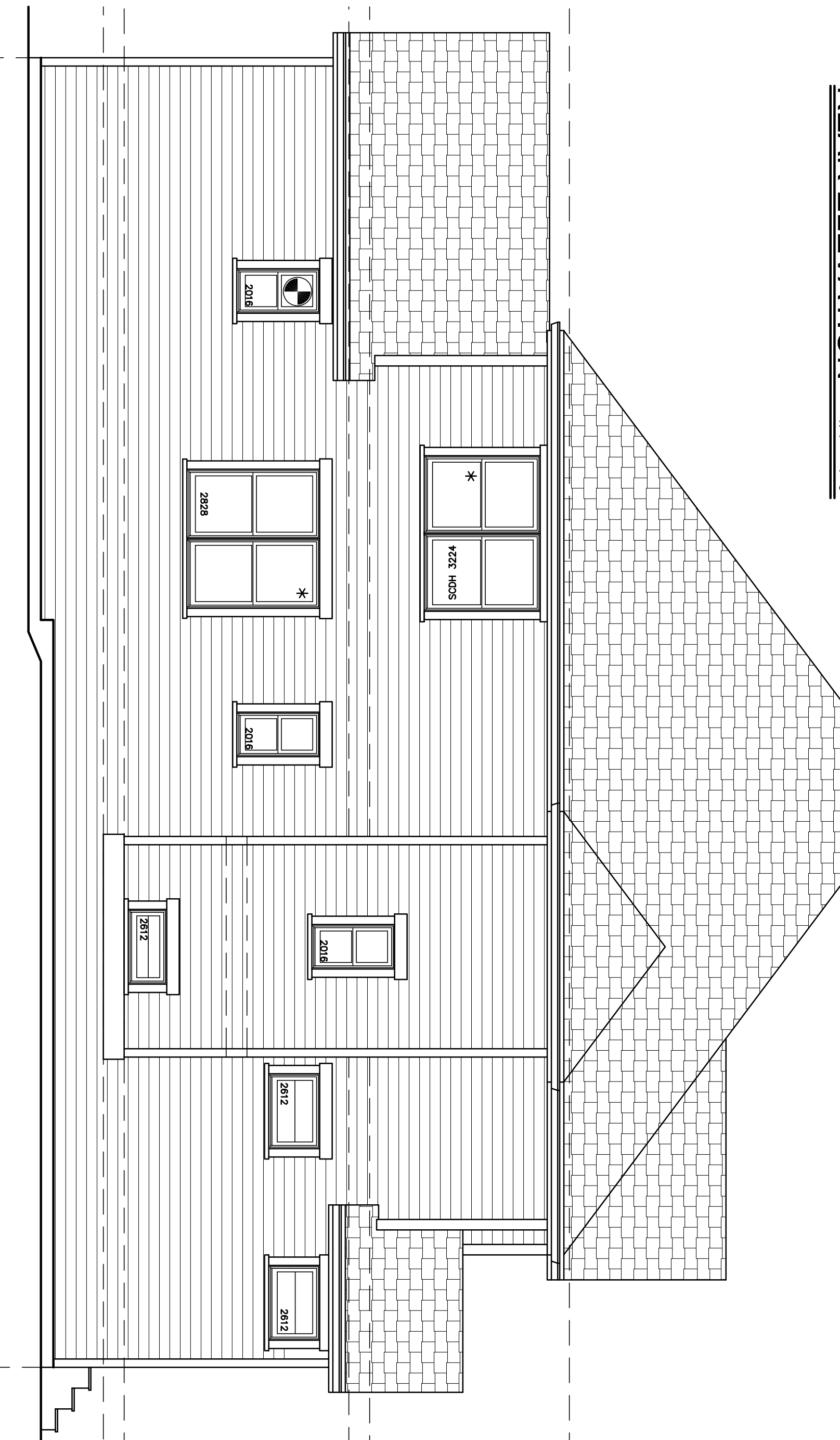
FRONT ELEVATION
1/4" = 1'-0"



REAR ELEVATION
1/4" = 1'-0"



LEFT ELEVATION
1/4" = 1'-0"



RIGHT ELEVATION
1/4" = 1'-0"

BOARD APPROVED

Case No: 2012-0229
 Date: 5/7/12
 W/Conditions: Yes
 W/Out Conditions: _____

VILLAGE OF ORLAND PARK
(WILL COUNTY)

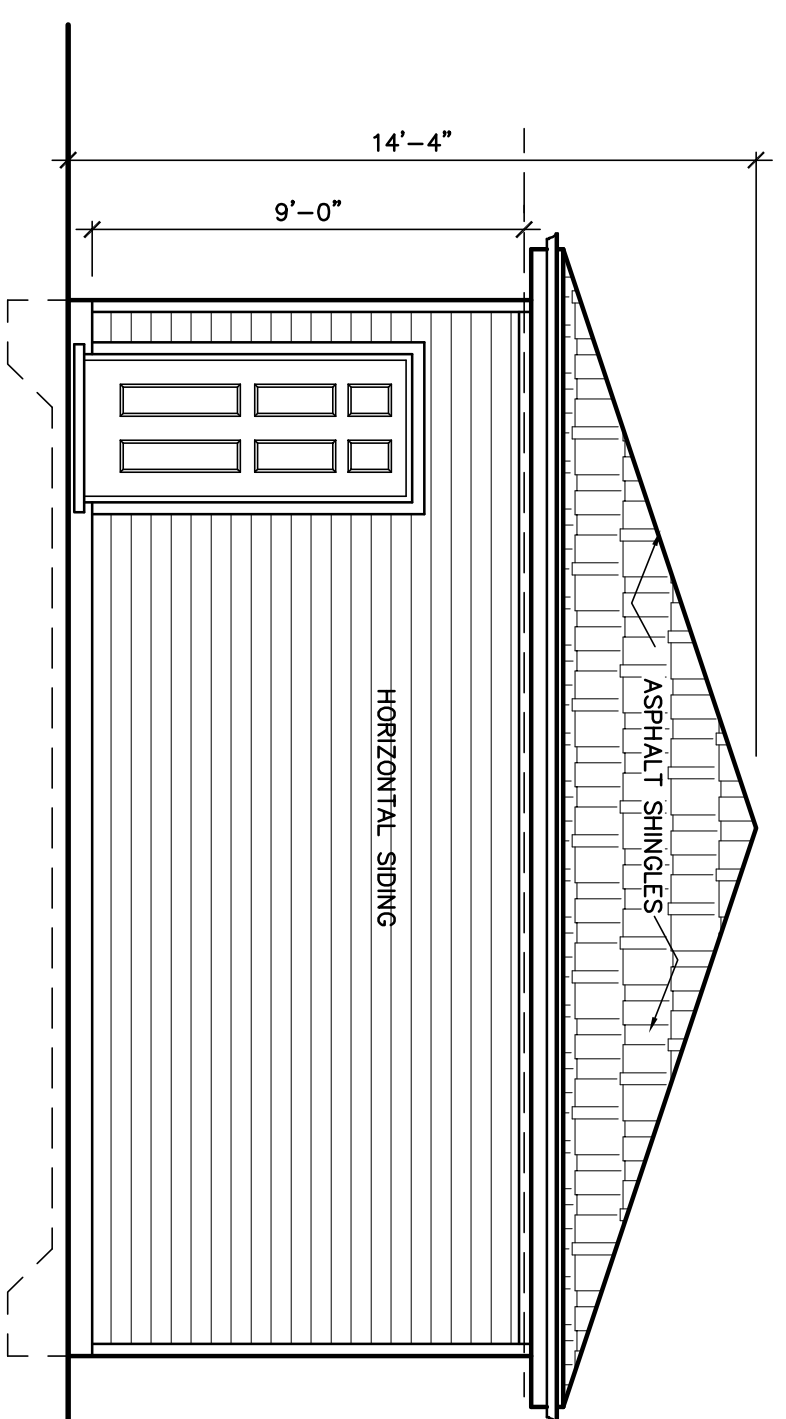
LJM
 Group, Inc.
Designing with the Spirit of Illinois
 P.I.: 708-404-4451

Two Story Residence
 9875 W 144th Pl.
 Orland Park, Ill.

NO. 101	FOUNDATIONS
A-201	FOUNDATION PLAN
A-211	FIRST FLOOR PLAN
A-221	SECOND FLOOR PLAN
A-501	SECTION / PLUMBING
E-101	ELECTRICAL
SHEET	

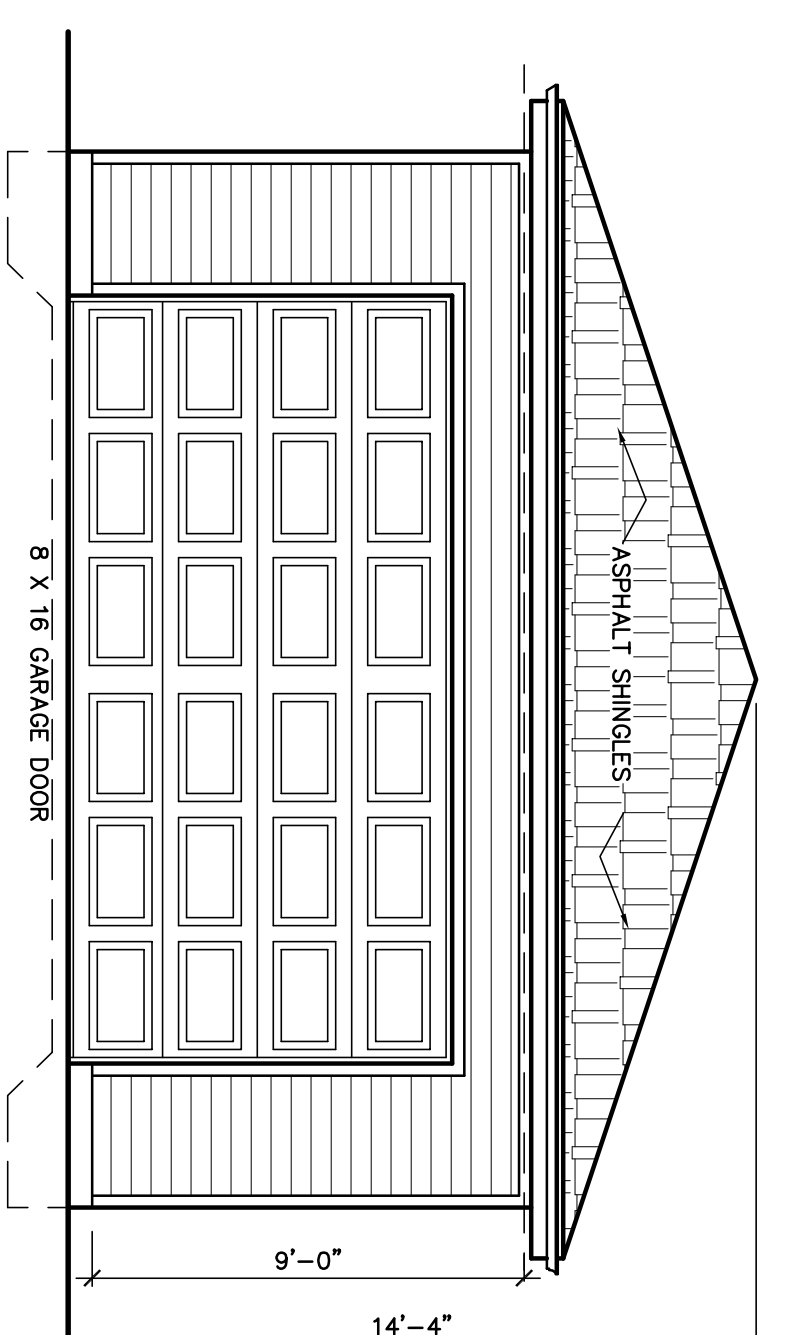
4.12.2012
 2012-28

A-1.0



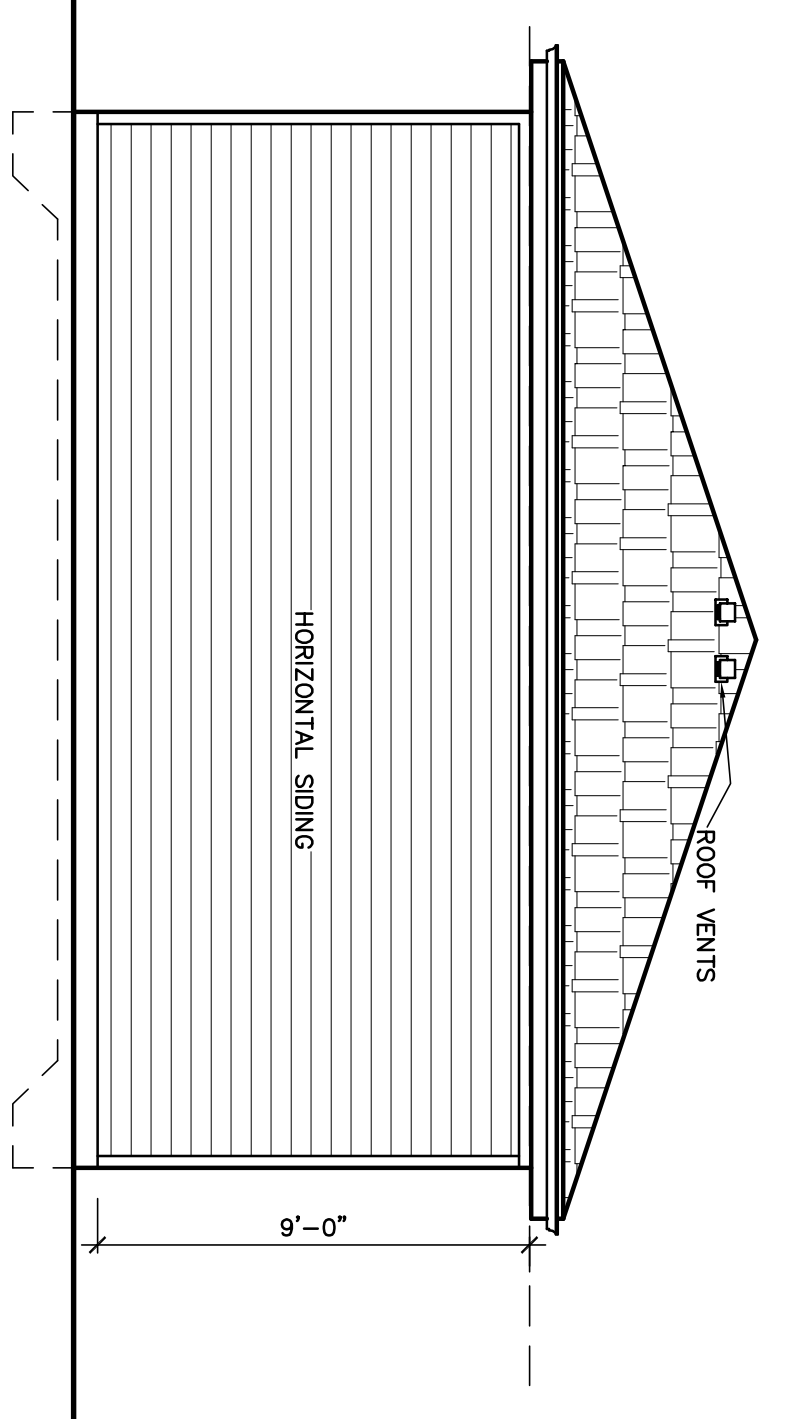
GARAGE REAR ELEVATION

SCALE 1/4" = 1'-0"



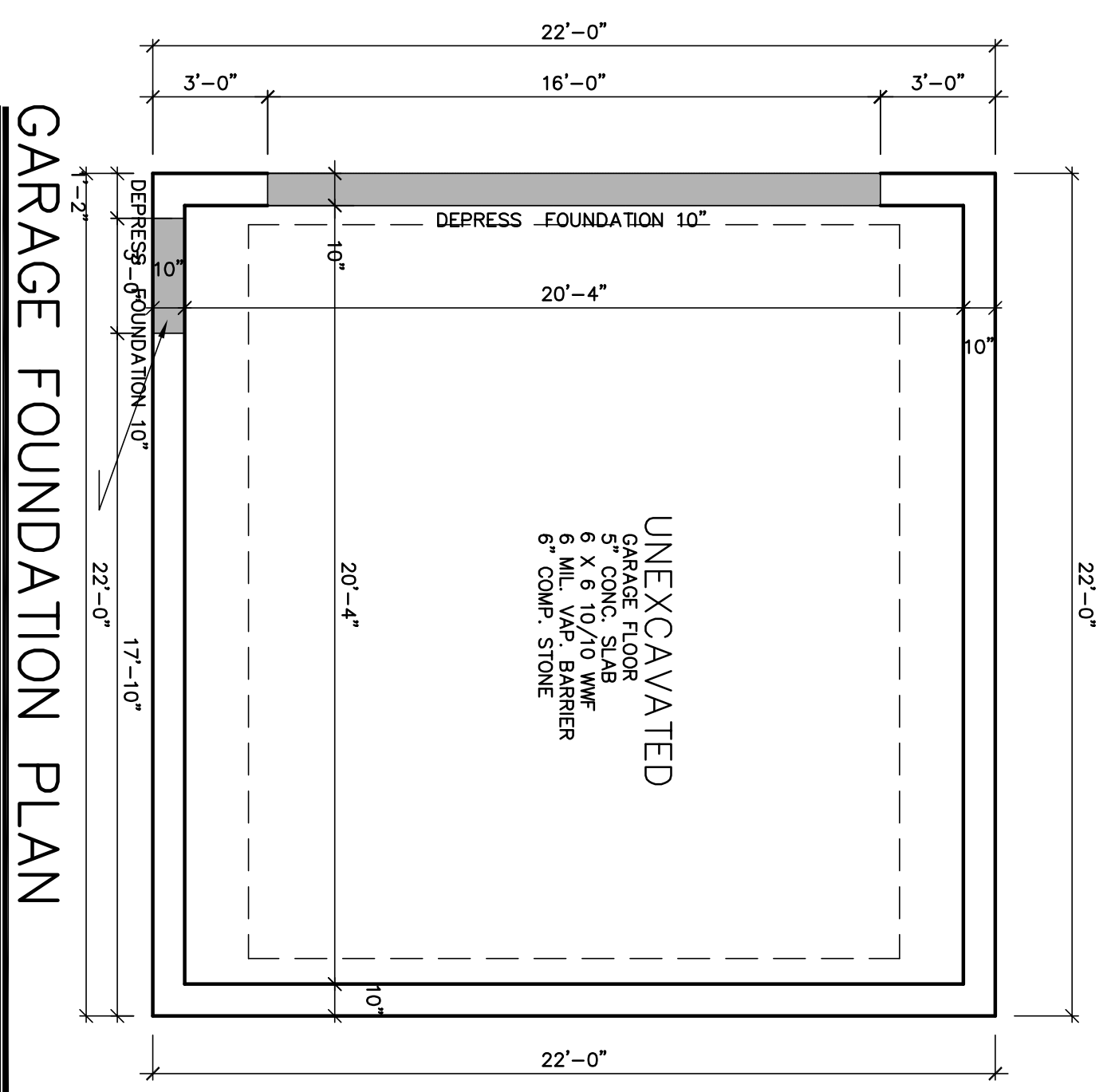
GARAGE FRONT ELEVATION

SCALE 1/4" = 1'-0"



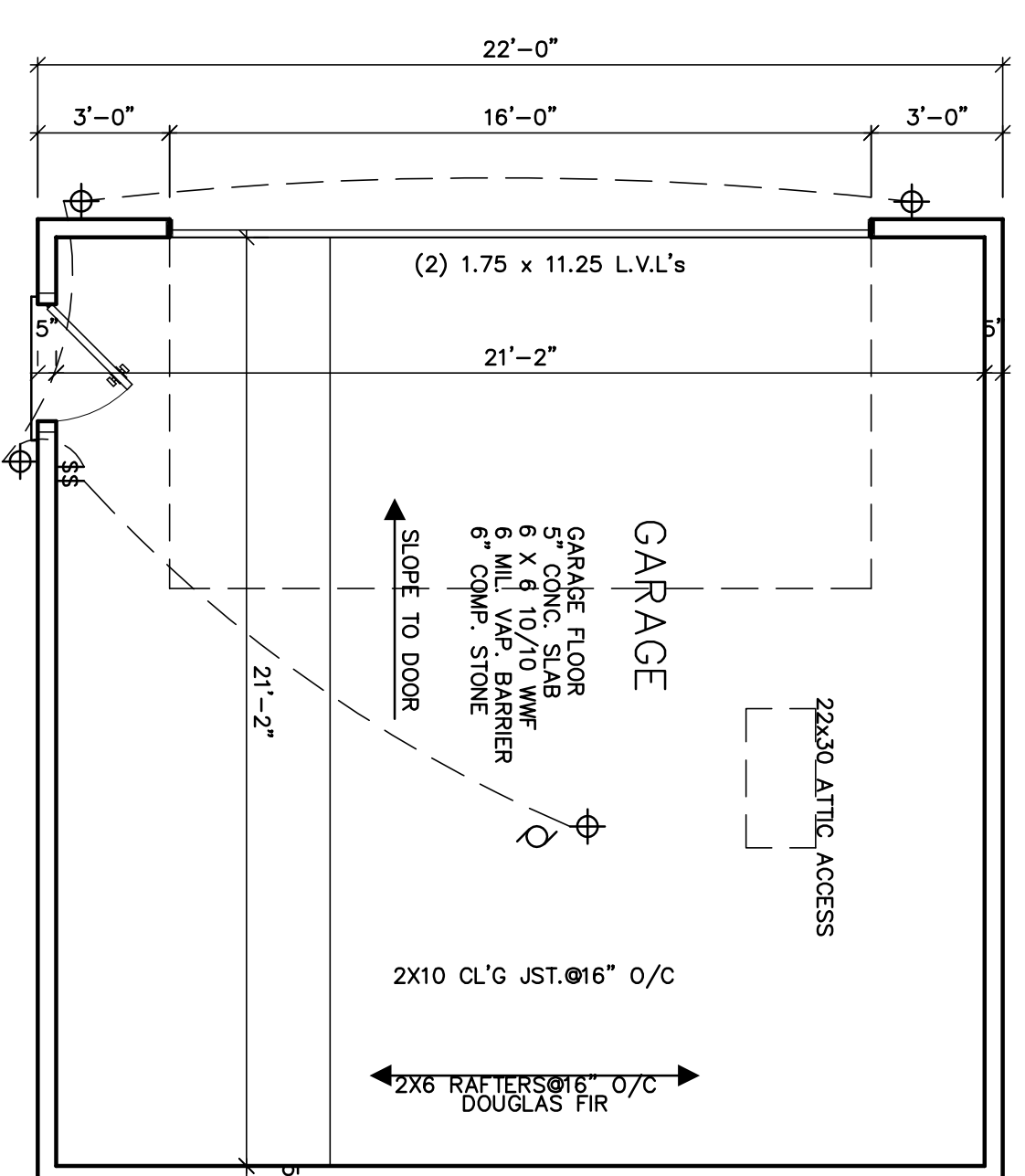
GARAGE SIDE ELEVATIONS

SCALE 1/4" = 1'-0"



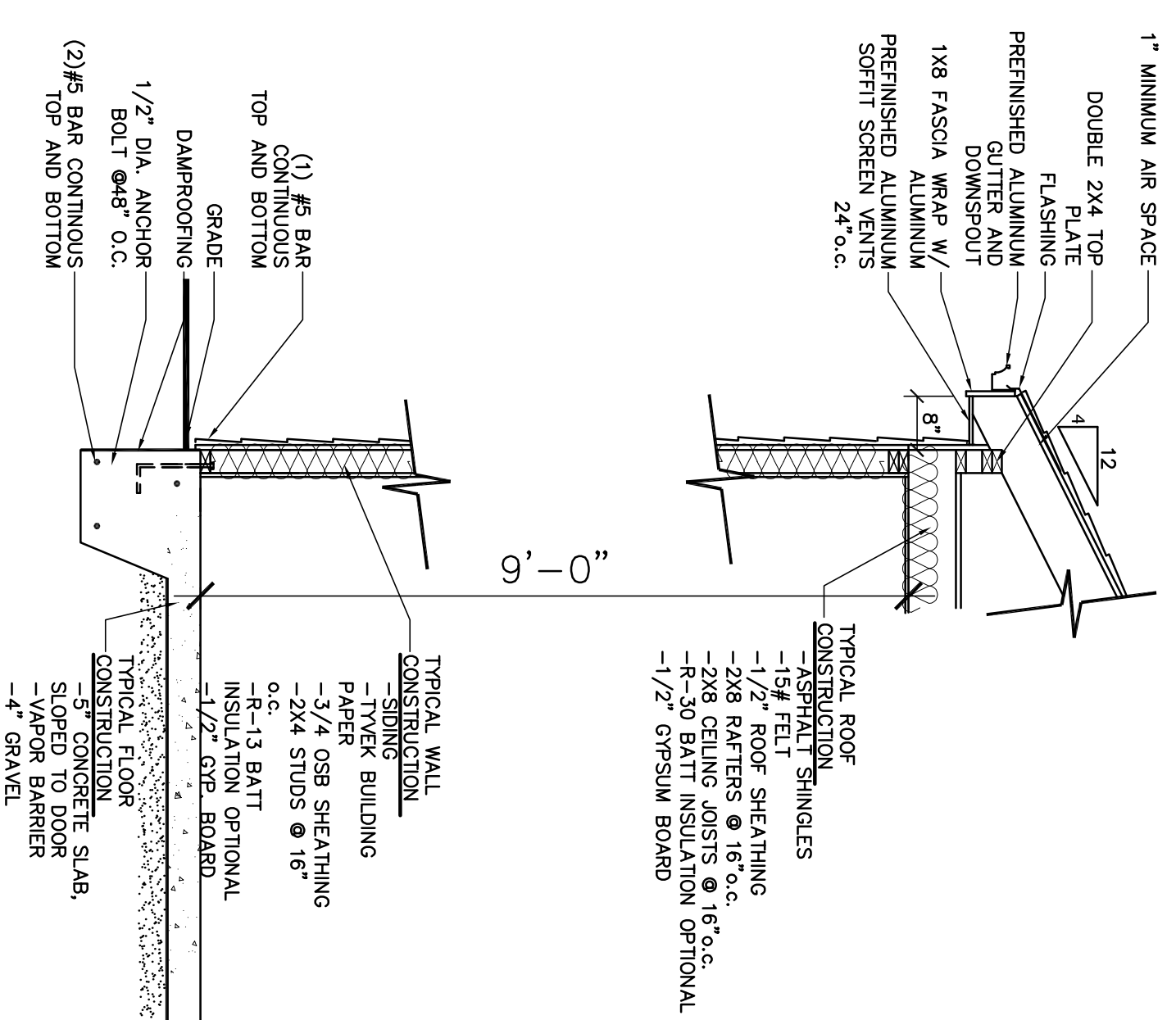
GARAGE FOUNDATION PLAN

SCALE 1/4" = 1'-0"



GARAGE FLOOR PLAN

SCALE 1/4" = 1'-0"



BOARD APPROVED

Case No: _____
 Date: _____
 W/Conditions: _____
 W/Out Conditions: _____

VILLAGE OF ORLAND PARK

LJM
 Group, Inc.
Designing with the Future in Mind
 Ph: 708-404-4451

NO. 1	A-10	ELEVATIONS
	A-20	FOUNDATION PLAN
	A-21	FIRST FLOOR PLAN
	A-22	SECOND FLOOR PLAN
	A-30	SECTION / PLUMBING
	E-10	ELECTRICAL

Two Story Residence
 9875 W 144th Pl.
 Orland Park, Ill.

NO. 2		

DATE: 4.12.2012
 TIME: 2012-28
 SHEET: A-3.1