

PLANT SCHEDULE

KEY	COMMON/LATIN NAME	SIZE	CONDITION*	SPACING	QUANTITY
EVERGREEN SHRUBS					
DY	DENSE YEW TAXUS X MEDIA 'DENSIFORMIS'	24"	B & B	3' O.C.	74 ✓
EA	EMERALD GREEN ARBORVITAE THUJA OCCIDENTALIS 'SMARAGO'	5'	B & B	4.5' O.C.	12 ✓
KJ	KALLAY JUNPER JUNIPERUS CHIN. 'KALLAYS COMPACT'	24"	B & B	3' O.C.	78 ✓
DECIDUOUS SHRUBS					
AV	AUTUMN JAZZ ARROWWOOD VIBURNUM VIBURNUM DENTATUM	36"	B & B	4.5' O.C.	10 ✓
BB	BURNING BUSH EUONYMUS ALATA 'RUDY HAAG'	36"	B & B	5' O.C.	21 ✓
DL	DWARF KOREAN LILAC SYRINGA MEYERI 'PALIBIN'	36"	B & B	5' O.C.	55 ✓
GS	GOLDFLAME SPIREA SPIRAEA X BUMALDA	24"	B & B	3' O.C.	84 ✓
GROUNDCOVERS					
AF	ANNUAL FLOWERS SPECIES PER AVAILABILITY	S.F.	FLAT	4/S.F.	70 ✓
DM	DAYLILY MIX** HEMEROCALLIS SPECIES	1G.	CONTR.	2' O.C.	180 <i>mixed (see 20)</i>
EC	PURPLELEAF WINTERCREPPER EUONYMUS FORTUNEI 'COLORATA'	QT.	CONTR.	2/S.F.	516 ✓
KG	WHITE FEATHER REED GRASS CALAMAGROSTIS X ACUTIFLORA 'OVERDAM'	3G.	CONTR.	3' O.C.	103 ✓
PM	PERENNIAL MIX*** COREOPSIS VERTICILLATA / GERANIUM PRATENSE	1G.	CONTR.	2' O.C.	36 <i>in record by 30</i>
SOD	SOD, BLUEGRASS VARIETY	S.Y.			700 <i>less sod</i>

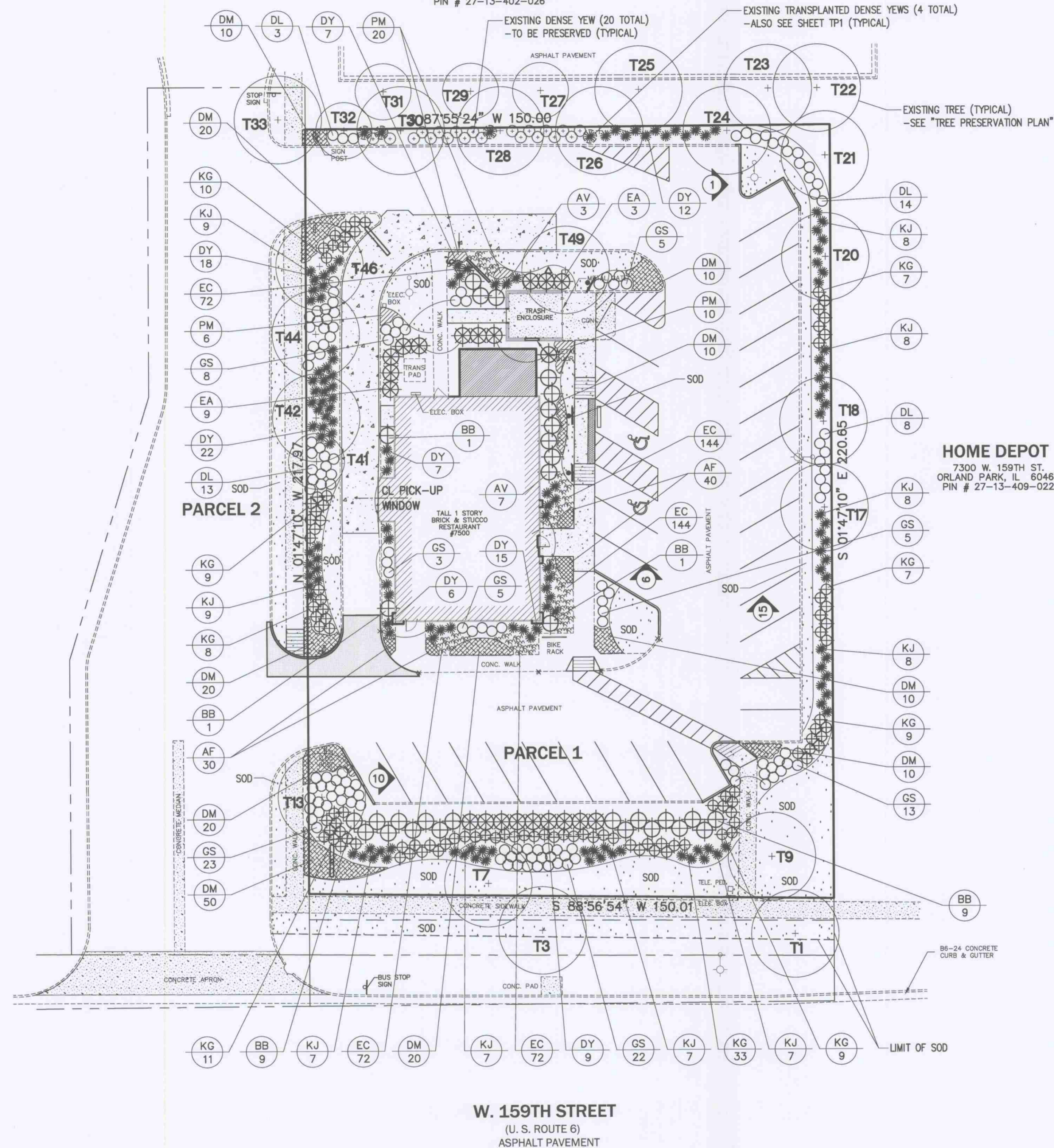
* IF B & B PLANTS ARE NOT AVAILABLE DUE TO TIME OF SEASON, CONTAINER GROWN PLANTS MAY BE SUBSTITUTED, AS APPROVED BY THE LANDSCAPE ARCHITECT.
 ** MIX 50% OF THE FOLLOWING VARIETIES IN EACH PLANTING AREA: 'HAPPY RETURNS' AND 'LITTLE WINE CUP'.
 *** MIX 50% OF THE FOLLOWING SPECIES IN EACH PLANTING AREA: COREOPSIS 'ZAGREB' AND GERANIUM 'MIDNIGHT REITOR'.

PLAN NOTES

- ALL PROPOSED SHRUB BEDS AND TREE RINGS TO RECEIVE 3" THICK SHREDDED HARDWOOD MULCH (PERENNIALS/GROUNDCOVERS 1" THICK).
- REPAIR ALL EXISTING TURF AREAS DISTURBED DURING CONSTRUCTION (SOD). REPLACE ALL EXISTING TURF AS NECESSARY TO RESTORE TREE PITTS AND OLD PLANTING BED AREAS. FIELD VERIFY ACTUAL QUANTITY NECESSARY.
- LIMIT OF SOD = PROPERTY LINE (UNLESS OTHERWISE NOTED).
- THE CONTRACTOR SHALL LOCATE THE EXISTENCE OF UTILITIES PRIOR TO STARTING WORK.
- THE CONTRACTOR SHALL SUPPLY ALL PLANT MATERIALS IN QUANTITIES SUFFICIENT TO COMPLETE THE PLANTING SHOWN ON THE DRAWING. PLANT MATERIAL QUANTITIES SHOWN ON PLAN TAKE PRECEDENCE TO THOSE OF THE PLANT LIST.
- ALL PLANT MATERIALS SHALL CONFORM TO THE GUIDELINES ESTABLISHED BY THE CURRENT AMERICAN STANDARD FOR NURSERY STOCK, PUBLISHED BY THE AMERICAN ASSOC. OF NURSEYMEN OR EQUIVALENT. NO "PARK GRADE" MATERIAL SHALL BE ACCEPTED.
- ALL PLANT MATERIAL SHALL BEAR THE SAME RELATIONSHIP TO FINISHED GRADE AS THE PLANTS ORIGINAL GRADE BEFORE DIGGING.
- ALL PLANTS SHALL BE BALLED AND WRAPPED OR CONTAINER GROWN AS SPECIFIED. NO CONTAINER GROWN STOCK SHALL BE ACCEPTED IF IT IS ROOT BOUND. ALL WRAPPING MATERIAL MADE OF SYNTHETICS OR PLASTICS SHALL BE REMOVED AT THE TIME OF PLANTING.
- ALL PLANTINGS SHALL BE WATERED DURING THE FIRST 24 HOUR PERIOD AFTER PLANTING. WATER THOROUGHLY TO ENSURE ALL AIR POCKETS ARE REMOVED AROUND ROOT BALL.
- CONTRACTOR IS RESPONSIBLE FOR WATERING SOD UNTIL TIME OF KNOTTING.
- IMPORTED TOPSOIL (PLANTING AREAS) AND SPREADING BY EXCAVATING CONTRACTOR.
- ALL PROPOSED TREES OUTSIDE PLANTING BED AREAS SHALL RECEIVE A 5' DIA. MULCH RING AROUND TRUNK.
- ALL PLANTS AND STAKES SHALL BE SET PLUMB, UNLESS OTHERWISE NOTED. IT IS THE CONTRACTOR'S OPTION TO STAKE TREES, BUT HIS RESPONSIBILITY TO ASSURE PLANTS REMAIN PLUMB UNTIL END OF GUARANTEE PERIOD. IF STAKING OF TREES IS NOT PERFORMED, REMOVAL OF TOP 1/3 OF BURLAP AND ROPES IS UNNECESSARY (REMOVE ALL NON-Biodegradable MATERIAL).
- INFORMATION CONTAINED IN "PLAN NOTES" TAKES PRECEDENCE OVER INFORMATION IN "DETAILS".
- VERIFY SITE CONDITIONS AND INFORMATION ON DRAWINGS. PROMPTLY REPORT ANY DISCREPANCIES AND/OR DEVIATIONS FROM THE INFORMATION SHOWN ON THE PLAN. THE OWNER IS NOT RESPONSIBLE FOR UNAUTHORIZED CHANGES OR EXTRA WORK REQUIRED TO CORRECT UNREPORTED DISCREPANCIES.
- ALL PLANTING BED EDGES TO BE CULTIVATED.
- INSTALL SOIL SEPARATOR IN ALL PLANTING BEDS (BELOW MULCH). DO NOT INSTALL BELOW GROUND COVERS.
- AMEND ALL GROUNDCOVER BEDS W/4" THICK SAND AND COMPOST MIX PRIOR TO PLANTING. MIX INTO EXISTING TOPSOIL.
- ALL LANDSCAPED AREAS TO BE IRRIGATED WITH AN APPROPRIATE UNDERGROUND IRRIGATION SYSTEM. RECORD DRAWINGS TO BE SUBMITTED TO OWNER FOR APPROVAL.
- IRRIGATION SLEEVES (3" DIA. PVC) TO BE DIRECT BORED BELOW EXISTING PAVEMENT (BY IRRIGATION CONTRACTOR). FIELD VERIFY LOCATIONS ON SITE TO DETERMINE SAFEST ROUTES AFTER JULIETTE MARKS ARE IN PLACE.
- ALL EXISTING SHRUBS AND UNDERSTORY VEGETATION TO BE REMOVED.

GOODWILL DONATION CENTER

7400 W. 159TH ST.
ORLAND PARK, IL 60462
PIN # 27-13-402-026

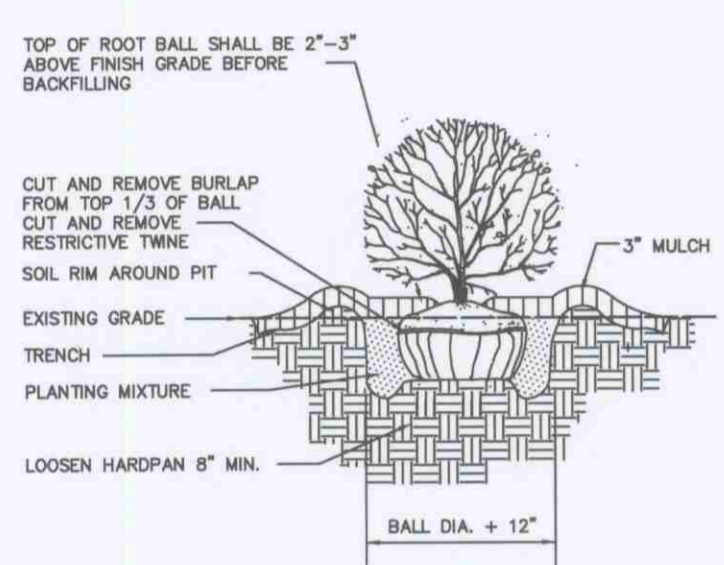


PROJECT BENCHMARK
TOP OF NW FLANGE BOLT ON HYDRANT AT
THE SE CORNER OF THE INTERSECTION OF
159TH ST. & OLCOTT AVE.
ELEVATION = 712.23

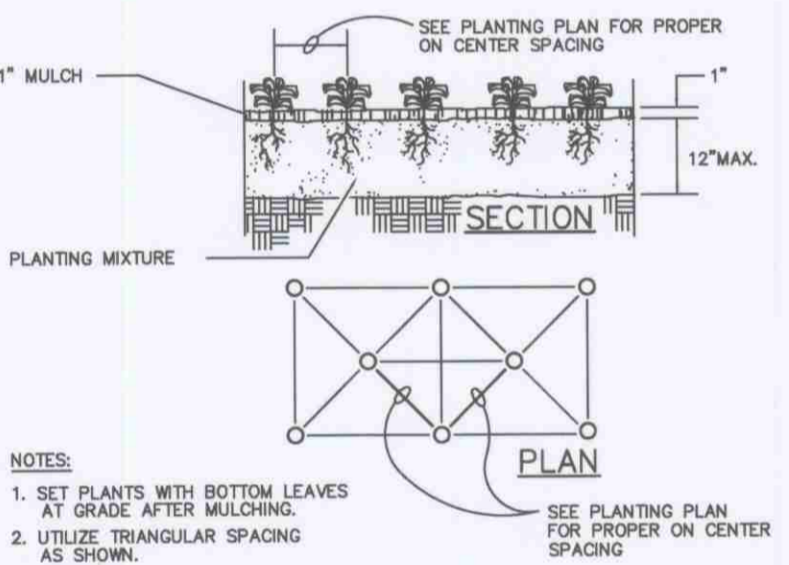


CountrySide Industries, Inc.
Landscape Architects & Contractors
29947 NORTH RAND ROAD • WAUCONDA, ILLINOIS 60084
847/526-1909 • WWW.COUNTRYSIDEINDUSTRIES.COM • FAX: 847/526-9094

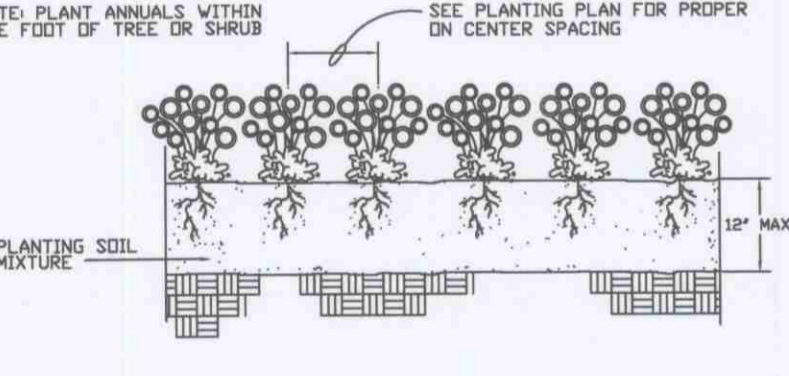
LANDSCAPE PLAN



DETAIL: SHRUB PLANTING
NOT TO SCALE



DETAIL: GROUNDCOVER PLANTING
NOT TO SCALE



DETAIL: ANNUAL PLANTING
NOT TO SCALE

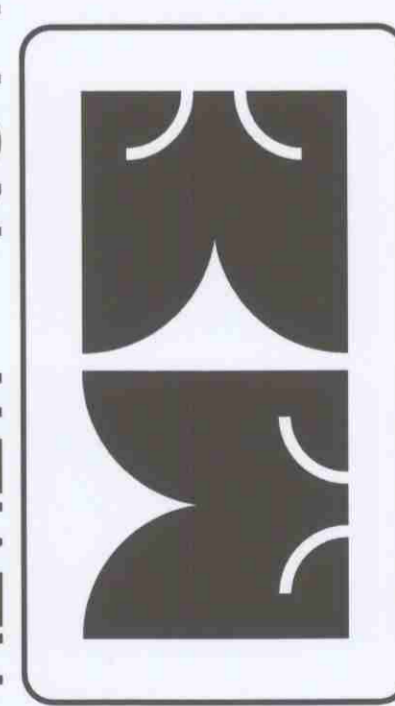
DATE	DESCRIPTION	REVISIONS
04-12-11	PER VILLAGE	
03-31-11	PER VILLAGE	

SITE IMPROVEMENTS

 NORTH SIDE 159TH STREET AT OLCOTT AVENUE
ORLAND PARK, ILLINOIS

MARCHIS ENGINEERING, LTD.
 CONSULTING ENGINEERS AND PLANNERS
 100 East State Parkway • Schaumburg, IL 60173 • Tel: 847-865-8357 Fax: 847-865-2252
 www.marchis.net

LANDSCAPE PLAN
 DESIGN: J.DAVITO, RLA
 DRAFTING: J.DAVITO
 DATE: FEB. 16, 2011
 SCALE: 1"=20'



JOB NO. 11-014
LS-1

FOR REVIEW - NOT FOR CONSTRUCTION