

**GENERAL NOTES:**

Plant material shall be nursery grown and be either balled and burlapped or container grown. Sizes and spreads on plant list represents minimum requirements.

The requirements for measurement, branding and ball size shall conform to the Code of Standards (ANSI Z601 - 1998) by the American Association of Nurserymen, Inc.

Grading shall provide slopes which are smooth and continuous. Positive drainage shall be provided in all areas.

Quantity lists are supplied as a convenience. However, the contractor should verify all quantities. The drawings shall take precedence over the lists.

All plant species specified are subject to availability. Material shortages in the landscape industry may require substitutions. All substitutions must be approved by the Village, Landscape Architect and Owner.

Contractor shall verify location of all underground utilities prior to digging.

Contractor shall report any discrepancies in the field to the Landscape Architect and/or Owner.

All perennial, ornamental grass, groundcover and annual beds shall be topdressed with a minimum of three inches (3") of mushroom compost. The topdressing shall be worked into the soil to a minimum depth of nine inches (9") by the use of a cultivating machine. Upon completion perennial & ornamental grasses shall be mulched with an additional two inch (2") layer of shredded wood mulch. Annual & groundcovers shall be covered with an additional two inch (2") layer of mushroom compost.

All other planting beds and tree enclosures shall be mulched with a minimum of four inches (4") of shredded wood mulch.

All bed trees and tree enclosures shall require a hard spaced edge between lawn and mulched areas.

Soil shall be tested before any.

Seed mixes shall be applied mechanically so that the seed is incorporated into the top one-half inch (1/2") of the seed bed. The seed shall then be covered with the specified straw blankets (retained per sheet) spaced.

**LANDSCAPE CALCULATIONS/ REQUIREMENTS**

**SOUTH PROPERTY LINE (BUFFER D):**  
CALC: 114 LF

REQUIRED	PROVIDED
CANOPY	0
UNDERSTORY	6
SHRUBS	50

**WEST PROPERTY LINE (BUFFER G):**  
CALC: 748 LF

REQUIRED	PROVIDED
CANOPY	0
UNDERSTORY	5
SHRUBS	44

**EAST PROPERTY LINE (BUFFER D):**  
CALC: 248 LF

REQUIRED	PROVIDED
CANOPY	5
UNDERSTORY	2
SHRUBS	24

**NORTH PROPERTY LINE (BUFFER D):**  
CALC: 248 LF

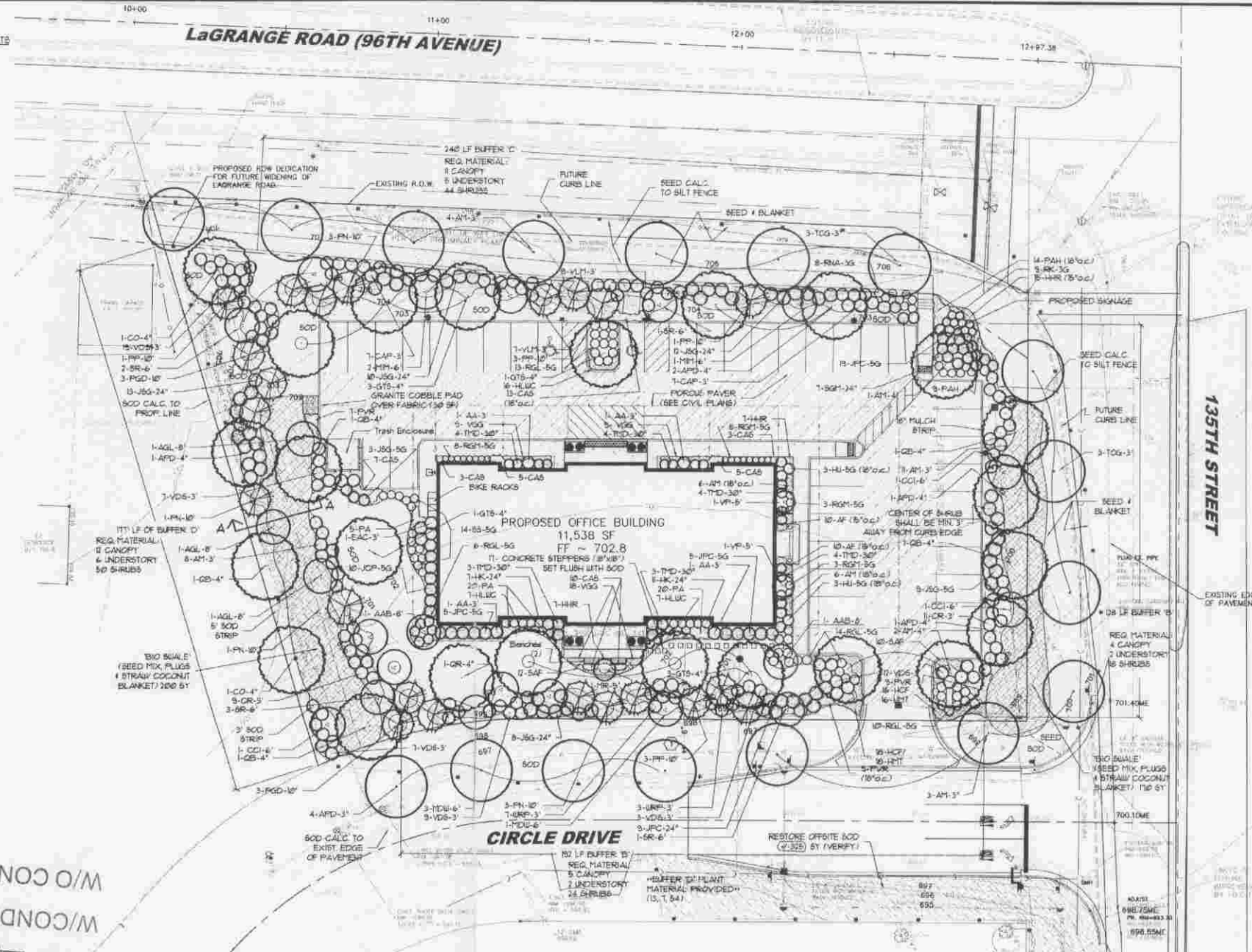
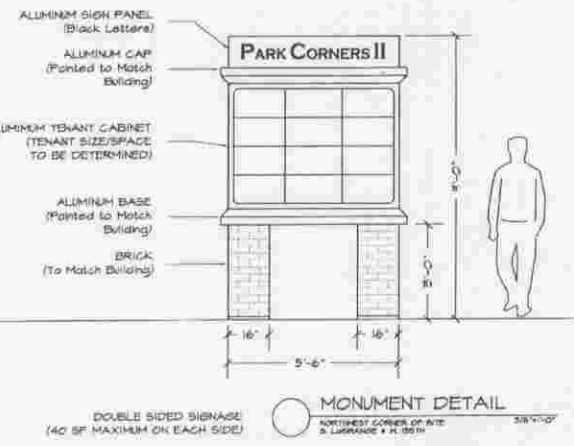
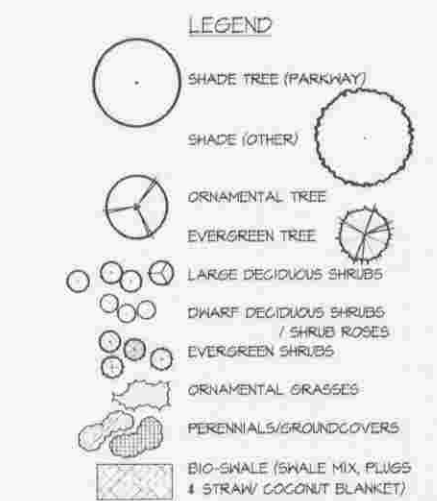
REQUIRED	PROVIDED
CANOPY	4
UNDERSTORY	2
SHRUBS	16

NOTE: THE MAJORITY OF THE TREES & SHRUBS HAVE BEEN UP-SIZED (EVERGREEN TREES TO 10", SHADE TREES TO 3/4").

ANY EXISTING PARKWAY TREE WILL BE PRESERVED OR TRANSPLANTED ELSEWHERE ON THE SITE PERMITTED.

IF THE EXISTING SILVER MAPLE OR THE SOUTHEAST CORNER OF THE SITE IS DAMAGED OR REMOVED, THE OWNER SHALL MITIGATE WITH 2 TREES AT 4' (PER SECTION 6-305.1) IF FOR ANY REASON THIS TREE NEEDS TO BE REMOVED THE OWNER SHALL OBTAIN A TREE REMOVAL PERMIT PRIOR TO REMOVING IT. THE VILLAGE SHALL DETERMINE WHEN THE REPLACEMENT TREES ARE PLANTED IF ANY CABLES DURING CONSTRUCTION THE TREE SHALL BE PROTECTED WITH ORANGE SAFETY FENCING ATTACHED TO STEEL POSTS 4' O.C. (INSTALLED AS CLOSE AS POSSIBLE TO THE DRIP LINE).

SEE L-2 FOR PLANTING DETAILS, BIO-SHALE DETAIL, AND NATIVE PLANT MAINTENANCE REQUIREMENTS.



W/O CONDITIONS  
W/O CONDITIONS  
DATE 11-3-08  
CASE NO. 2008-0691  
BOARD APPROVED

SEE L-2 FOR PLANTING DETAILS, BIO-SHALE DETAIL, AND NATIVE PLANT MAINTENANCE REQUIREMENTS

**CALL JULIE**  
48 HOURS BEFORE YOU DIG  
1-800-892-0123  
TOLL FREE  
Quoted 24 Hours  
Even, Eve

PLANT LIST	KEY	QUAN	BOTANICAL NAME	COMMON NAME	SIZE/TYPE	SS	VS	ULM	WRP	JFC	JGB	THD	CAS	PVR	FA	RAH	AF	AM	HCF	HRK	HLUC	HPT	SAP	VOS	MATERIAL & LABOR LIST	
<b>DECIDUOUS SHADE TREES</b>																										
APD	3	Acer p. 'Dorothy'	Deborah Nonsay Maple	4"BB																						
APD	4	Acer p. 'Dorothy'	Deborah Nonsay Maple	3"BB																						
AM	1	Acer f. 'Marmo'	Marmo Maple	4"BB																						
AM	1	Acer f. 'Marmo'	Marmo Maple	3"BB																						
CO	2	Celtis occidentalis	Hickory	4"BB																						
GTS	8	Gleditsia s. 'Skyline'	Skyline Honeylocust	4"BB																						
QB	5	Quercus bicolor	Swamp White Oak	4"BB																						
OR	1	Quercus rubra	Red Oak	4"BB																						
TCG	6	Tilia c. 'Glenleven'	Glenleven Little Leaf Linden	3"BB																						
<b>DECIDUOUS ORNAMENTAL TREES</b>																										
AGL	3	Aulus glutinosa	European Black Alder	8"BBsc																						
AAB	2	Anelochler g. 'Autumn Brilliance'	Autumn Brilliance Serviceberry	8"BBsc																						
CCI	3	Crataegus crus-galli v. nemoralis	Thornless Cockspur Hawthorn	6"BBsc																						
PR	1	Magnolia 'Jane'	Jane Magnolia	5"BBsc																						
PDW	4	Malus 'Donald Wyman'	Donald Wyman Crabapple	6"BBsc																						
MM	3	Malus 'Indian Magic'	Indian Magic Crabapple	6"BBsc																						
SR	1	Syringa reticulata	Japanese Tree Lilac	6"BBsc																						
VP	2	Viburnum prunifolium	Blackhaw Viburnum	5"BBsc																						
<b>EVERGREEN TREES</b>																										
PF	6	Picea pungens	Colorado Green Spruce	12"BB																						
PGD	6	Picea glauca densata	Black Hills Spruce	12"BB																						
PN	6	Pinus nigra	Austrian Pine	12"BB																						
<b>DECIDUOUS SHRUBS &amp; SHRUB ROSES</b>																										
AA	4	Aronia arbutifolia	Red Chokeberry	3"BB																						
AM	18	Aronia melanocarpa	Black Chokeberry	3"BB																						
CAP	14	Cornus alternifolia	Peking Cornusaster	3"BB																						
CR	20	Cornus rugeloides	Gray Dogwood	3"BB																						
EAC	1	Eurygia a. 'Compacta'	Dwarf Burning Bush	3"BB																						
HK	16	Hypericum kalmianum	Kalm St. John's Wort	24"SS																						
HU	6	Hydrangea p. 'Unique'	Unique Hydrangea	5G																						
RSJ	45	Rhus a. 'Gro-Low'	Gro-Low Sumac	24"SS																						
RSJ	22	Ribes a. 'Green Mound'	Green Mound Alpine Currant	24"SS																						
RC	9	Rosa 'Knockout'	Knockout Shrub Rose	3 Gal.																						
RNA	8	Rosa 'Noselei'	Flower Carpet Appleblossom Rose	3 Gal.																						
SGJ	1	Spiraea b. 'Goldground'	Goldground Spiraea	24"SS																						

© 2007 Ives/Ryan Group, Inc.  
Copyright 2007 Ives/Ryan Group, Inc., all rights reserved. The design and any and all ideas contained herein are the sole property of the Ives/Ryan Group, Inc. Reproduction of the design or concept embodied herein in any form, in whole or in part, without the consent of the Ives/Ryan Group, Inc. is prohibited.

**REVISIONS**

1	PER REVISED ENGINEERING	3-28-07
2	PER REVISED ENGINEERING	6-13-07
3	PER REVISED ENGINEERING	
	VILLAGE COMMENTS	8-9-07
4	PER REVISED ENGINEERING	
	VILLAGE COMMENTS	8-20-07
5	PER REVISED ENGINEERING	
	VILLAGE COMMENTS	9-10-07
6	TO FINAL PLAN	12-18-07
7	PER ENGINEERING COMMENTS	2-14-08
8	PER ENGINEERING UPDATE	5-27-08

**PARK CORNERS II**  
Orland Park, ILLINOIS

**McNAUGHTON DEVELOPMENT, INC.**  
11900 Southwest Hwy.  
Suite 101  
Palos Park, Illinois 60464

**Ives/Ryan Group, Inc.**  
Land Planning  
Landscape Architecture  
Golf Course Architecture

1801-A North Mill Street  
Naperville, IL 60563  
Phone: (630) 717-0726  
Fax: (630) 717-0875  
E-Mail: info@ivesryangroup.com

**FINAL LANDSCAPE PLAN**

PROJECT NO.: L6302  
JOB NO.: 6812A

DATE: 3-23-07  
SCALE: 1"=20'

PLANNER: MT  
DRAWN BY: MT  
CHECKED:

SHEET L-1