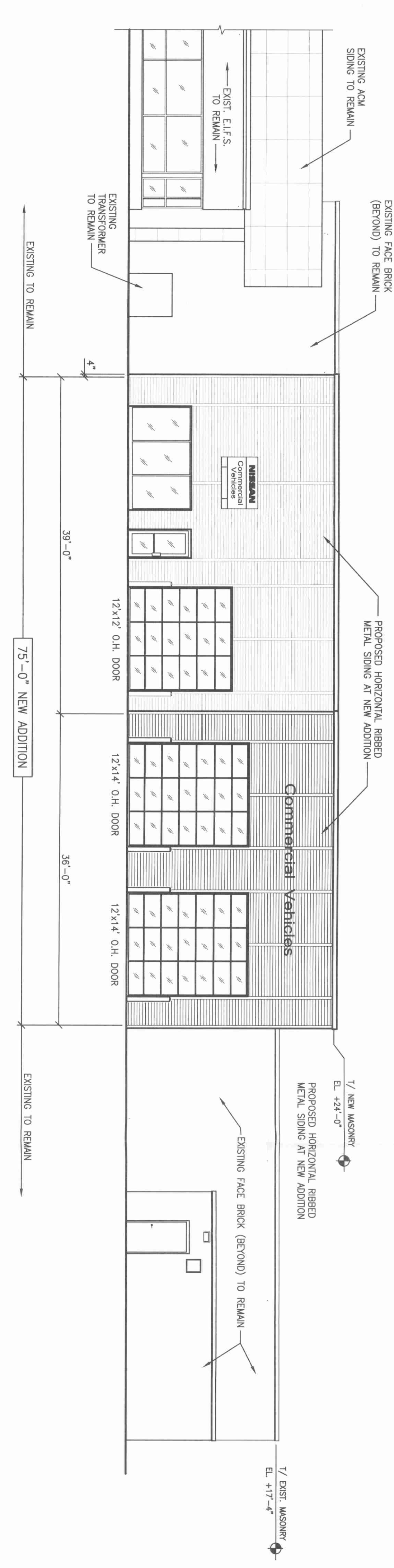
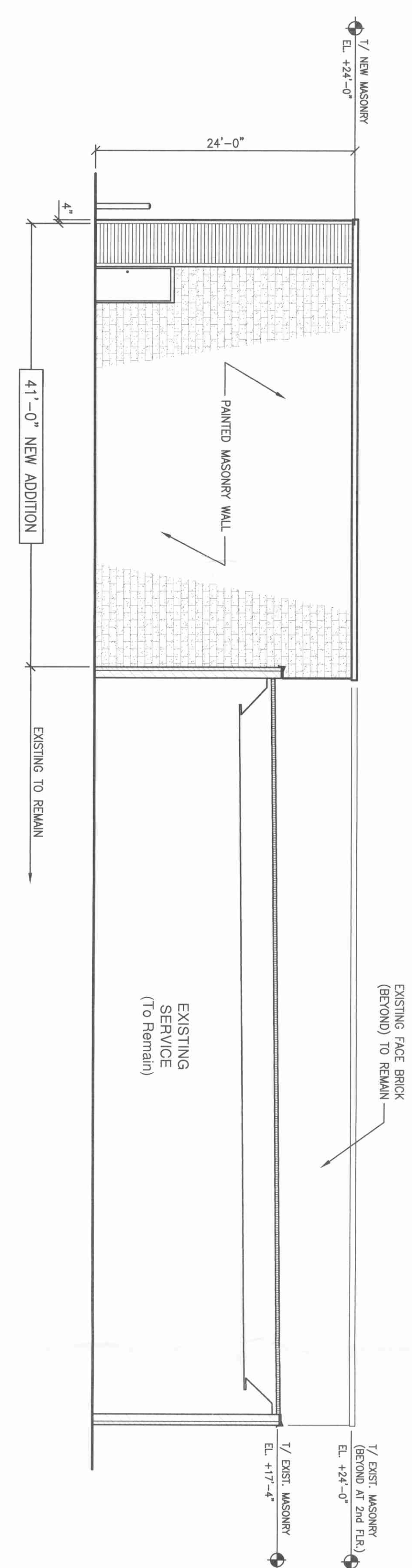
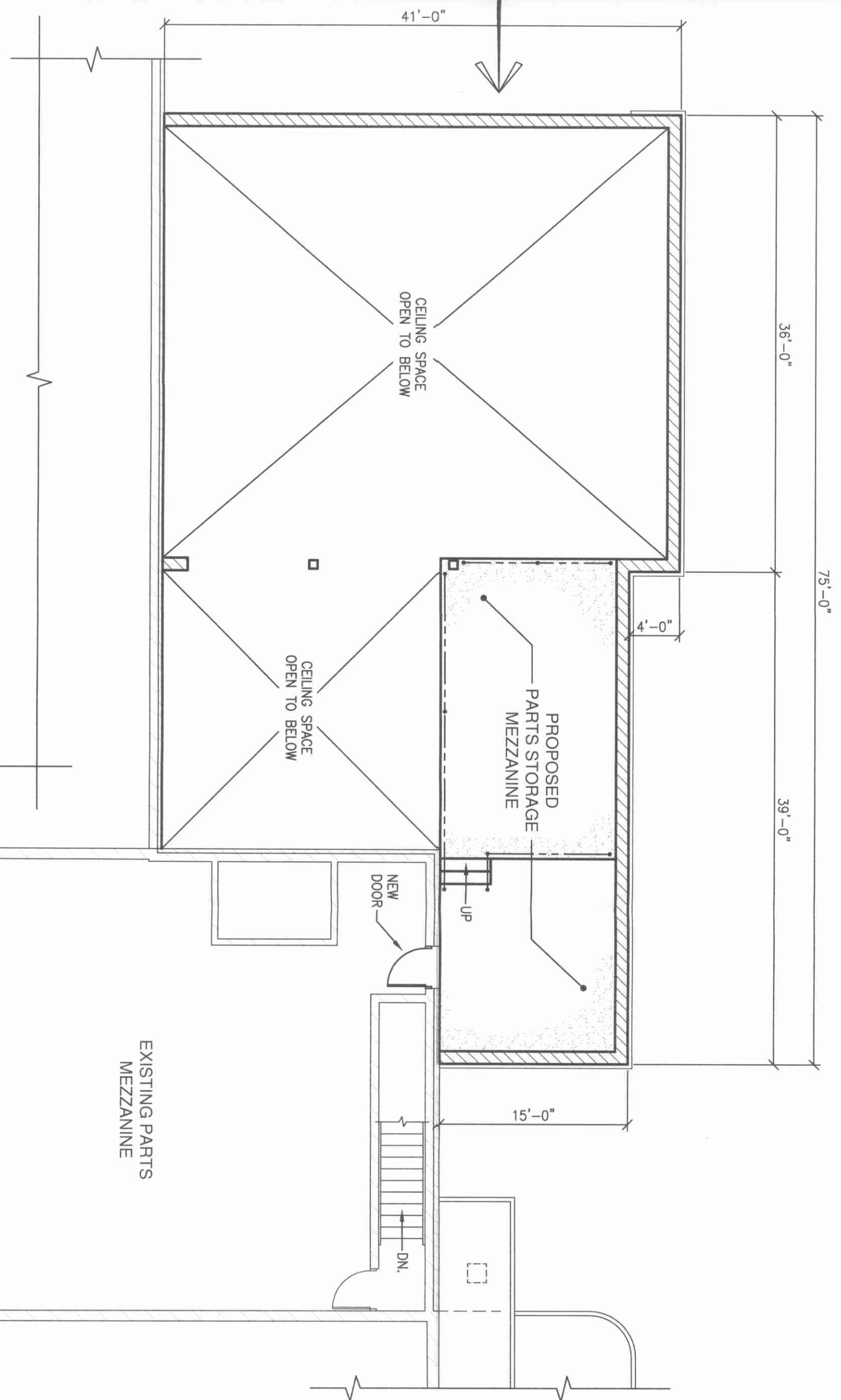
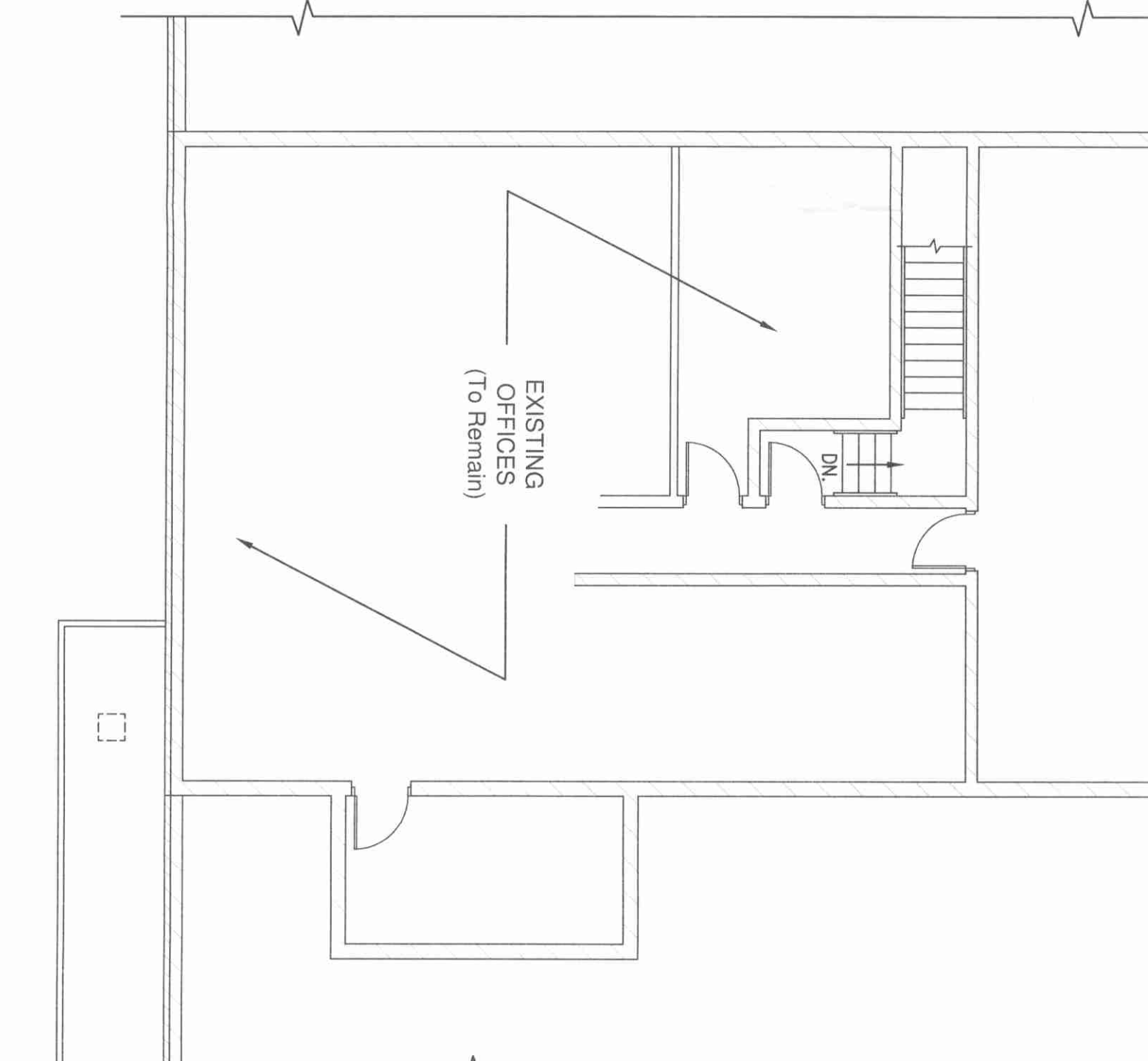


PROPOSED COMMERCIAL VEHICLE SERVICE ADDITION
 1st Floor = 2,545 s.f.
 2nd Floor = 590 s.f.



PARTIAL EXISTING 2nd FLOOR PLAN with PROPOSED ADDITION
 1/8" = 1'-0"



BOARD APPROVED
 CASE NO. 2010-0001
 DATE 4/5/10
 W/CONDITIONS
 W/O CONDITIONS

COPYRIGHT © 2009
E. ANTHONY, INC.
 For the full range of services, please contact E. Anthony, Inc. at 708.802.8230. We are an Equal Opportunity Employer. All rights reserved. No part of this drawing may be reproduced without written consent of E. Anthony, Inc.

Rev	Date	Description
A	11/18/09	SITE DEVELOPMENT REVIEW

Project No. 29-009
 Date 11/18/09

Sheet No. **A2.0**

Drawing Title
PROPOSED 2nd FLOOR PLAN and EXTERIOR ELEVATIONS

Service Addition to
Orland Park NISSAN
 8550 w. 159th Street
 Orland Park, IL 60462

Consultants

E. ANTHONY, INC.
 Complete Construction Services
 18521 Spring Creek Drive, Unit F Tinley Park, IL 60477
 Ph.: 708.802.8230 Fax: 708.802.8233