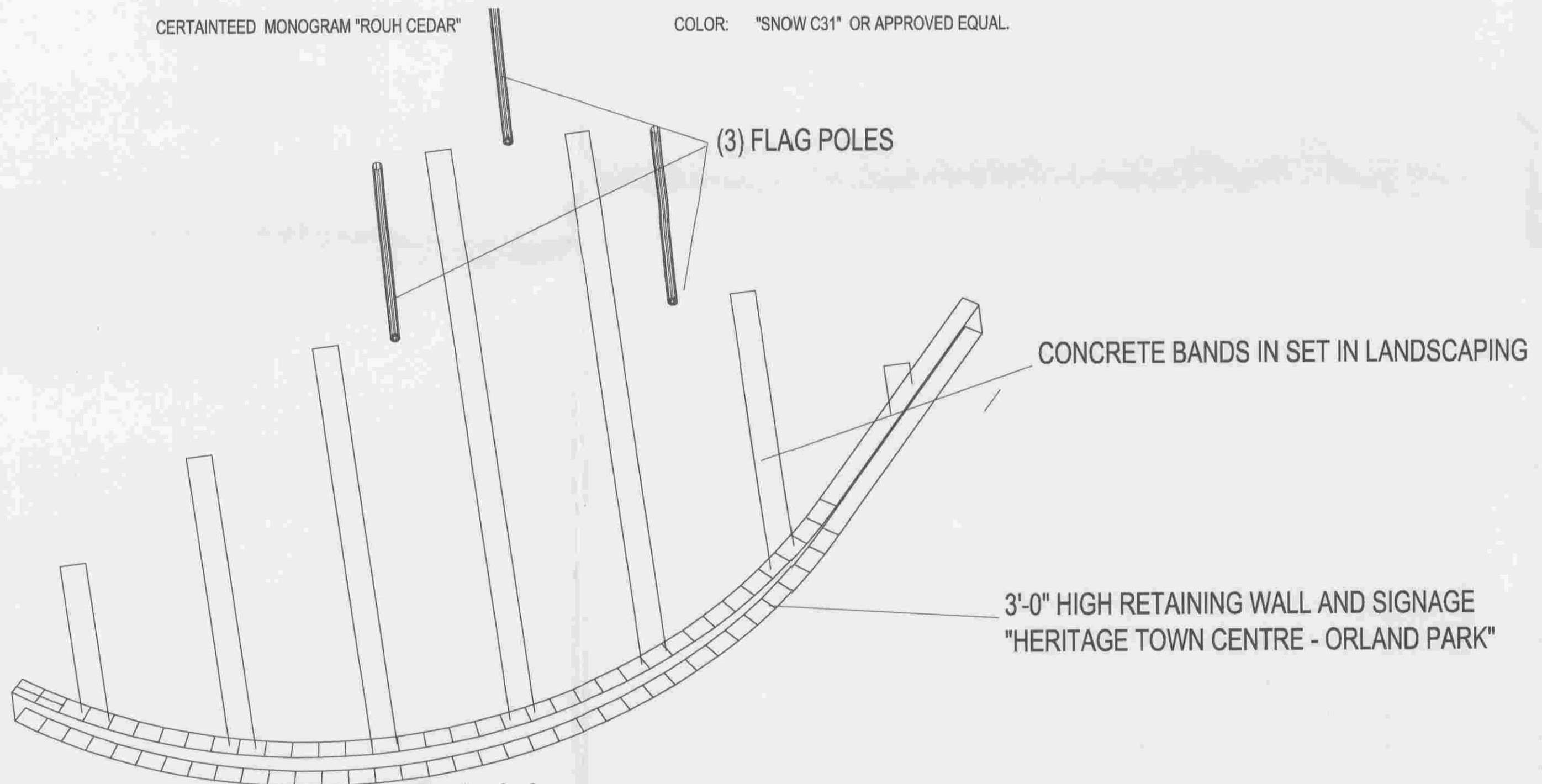


# EXTERIOR MATERIAL FINISH SCHEDULE

ID#	DESCRIPTION	MANUFACTURER	MODEL/ COLOR	NOTE
BR-1	MODULAR SIZE BRICK FIELD COLOR	GLEN-GREY BRICK OR APPROVED EQUAL CONTACT ILLINOIS BRICK COMPANY AT (708) 344-1000	MEDALIA COLLECTION "RUSTIC BURGUNDY"	
ST-1	8" HIGH X 4" STONE ACCENT VENEER "SMOOTH FACE"	RENAISSANCE MASONRY UNITS OR APPROVED EQUAL CONTACT BUILDING STONE PRODUCTS, INC. AT (630) 257-9220	"PECAN "	
P-1	PAINT	SHERWIN WILLIAMS ONE (1) COAT "ALL SURFACE ENAMEL PRIMER" /TWO (2) COATS "ALL SURFACE ENAMEL ALKYD" OR APPROVED EQUAL SURFACE PREPARATION IN ACCORDANCE WITH MANUFACTURER'S SPECIFICATIONS.	SW- 7006 (EXTRA WHITE) OR APPROVED EQUAL	
SF-1	ALUMINIUM STOREFRONT (THERMAL BROKEN) W/ INSULATED NON-GLARE CLEAR LOW-E GLASS	OLDCASTLE GLASS CONTACT AT (866) 653-2278 OR APPROVED EQUAL	SPLIT FINISH (PAINTED ALUM. "WHITE FINISH" EXTERIOR/ PAINT FINISH INTERIOR COLOR TO BE DETERMINED)	
SF-2	ALUMINIUM STOREFRONT (THERMAL BROKEN) W/ INSULATED FROSTED LOW-E GLASS	OLDCASTLE GLASS CONTACT AT (866) 653-2278 OR APPROVED EQUAL	SPLIT FINISH (PAINTED ALUM. "WHITE FINISH" EXTERIOR/ PAINT FINISH INTERIOR COLOR TO BE DETERMINED)	
SF-3	ALUMINIUM STOREFRONT (THERMAL BROKEN) W/ INSULATED NON-GLARE CLEAR LOW-E TEMPERED GLASS	OLDCASTLE GLASS CONTACT AT (866) 653-2278 OR APPROVED EQUAL	SPLIT FINISH (PAINTED ALUM. "WHITE FINISH" EXTERIOR/ PAINT FINISH INTERIOR COLOR TO BE DETERMINED)	
W-1	VINYL WINDOW/W/ 1" CONTOUR GRILLES (JEN-WEN) W/ INSULATED CLEAR LOW-E 366 GLASS	JEN-WEN VINYL WINDOWS CONTACT SCHAAF WINDOWS CO. AT (708) 342-0900 OR APPROVED EQUAL	COLOR: "WHITE"	
AS-1	ARCHITECTURAL ASPHALT SHINGLES	TIMBERLINE SERIES 30 YEAR WARRANTY ARCHITECTURAL GRADE OR APPROVED EQUAL	COLOR: "SLATE" OR APPROVED EQUAL.	
SD-1	VINYL SIDING	CERTAINTED MONOGRAM "ROUH CEDAR"	COLOR: "SNOW C31" OR APPROVED EQUAL.	

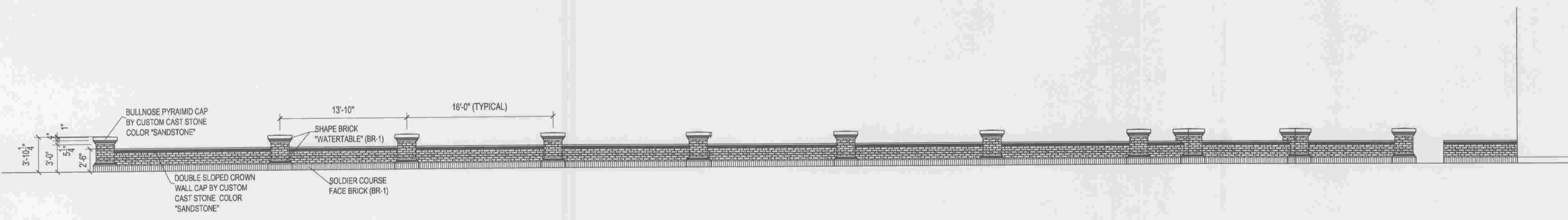
## Painting General Notes

- The surface must be dry and in sound condition.
- Remove mildew, oil, dust, dirt, loose rust, peeling paint or other contamination to ensure good adhesion.
- No exterior painting should be done immediately after rain, during foggy weather, when rain is predicted or when the temperature is below 50 °F- unless the coating indicates it can be used down to 35°F.



## GATEWAY DETAIL

Scale: NONE



## Garden Wall Elevation (North Elevation)

Scale: 3/4" = 1'-0"

NO.	BY	DATE	DESCRIPTION	NO.	BY	DATE	DESCRIPTION
1	SAS	10/18/07	DESIGN REVIEW	6	SAS	1/6/08	Village Staff Comments
2	SAS	10/24/07	OWNER REVISIONS	7	SAS	1/14/08	Planning Commission Comments
3	SAS	10/29/07	VILLAGE SUBMITTAL FOR SITE PLAN REVIEW	8	SAS	1/29/08	Staff Comments
4	SAS	11/28/07	RESPONSE TO VILLAGE COMMENTS				
5	SAS	12/10/07	traffic study response				

**NOTE TO BUILDING DEPARTMENT:**  
 THESE DOCUMENTS (PLANS & SPECIFICATIONS) ARE VALID FOR PERMITS ONLY WHEN THE ARCHITECT'S ORIGINAL SEAL AND SIGNATURE APPEARS AND IS AFFIXED, AND UNLESS OTHERWISE PROVIDED IN WRITING ARE INTENDED AS A PERMIT SUBMITTAL FOR ONE (1) BUILDING ONLY.  
 © The Shalvis Group, P.C. 2007

Proposed New Bank Facility for:  
**Heritage Bank**  
 159th and Ravinia Avenue  
 Orland Park, Illinois  
 For Preliminary Review by Owner

**THE SHALVIS GROUP P.C. ARCHITECTURE**  
 11508 W. 183rd Street, Suite NW, Orland Park, Illinois 60467  
 P. 708.476.6830 F. 708.476.6831 www.shalvisgroup.com

PROJECT ARCHITECT: S.A.S.  
 DRAFTERPERSON: SAS  
 APPROVED: \_\_\_\_\_  
 DATE: 10/17/2007  
 SCALE: See Sheet  
 COMPUTER NAME: \_\_\_\_\_

PREPARED FOR: Heritage Bank

LOCATION: Heritage Bank, 159th and Ravinia Avenue, Orland Park, Illinois  
 JOB NUMBER: 2007-055

© The Shalvis Group, P.C. 2007  
 Copyright, 2007, The Shalvis Group, P.C. These plans are protected under copyright laws of the United States and foreign countries, and are to be used only for the construction and repair and remodeling of the structure or structures defined in the contract between the Architect and the Owner. Any use of these plans to construct, remodel or repair additional structures constitutes a violation of the Architect's copyright of these plans and is prohibited.