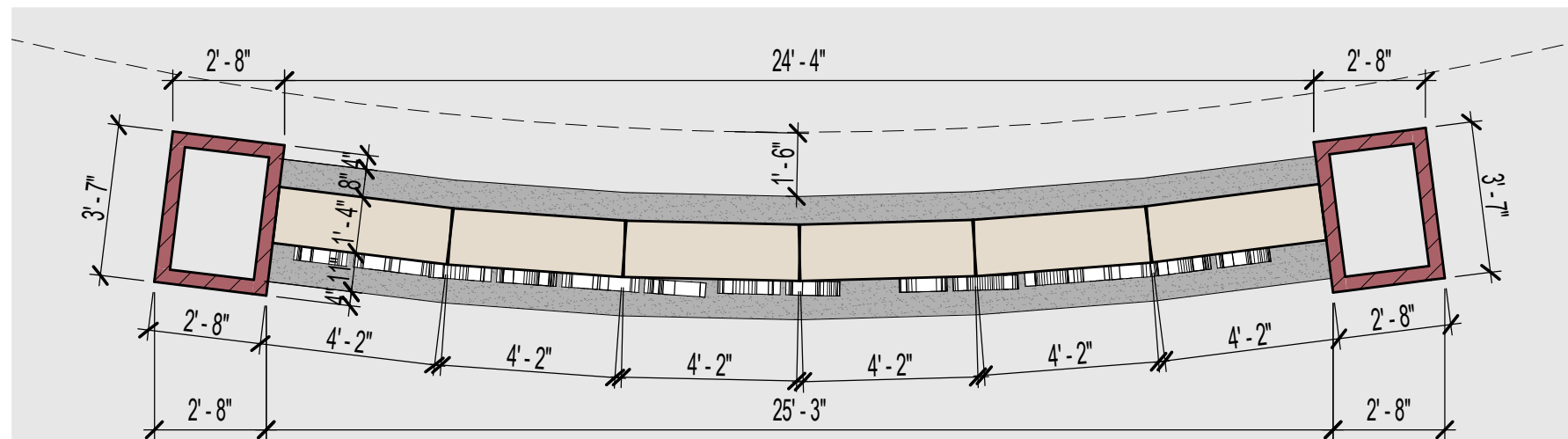


1 LANDSCAPE FEATURE ELEVATION
SCALE: 1/4" = 1'-0"

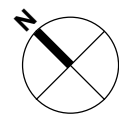


2 LANDSCAPE FEATURE
SCALE: 1/4" = 1'-0"

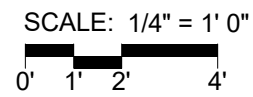
GROUND FLOOR PLAN - SCALE: 1/8" = 1'-0"



OKW ARCHITECTS
600 W. Jackson, Suite 250
Chicago, IL 60661

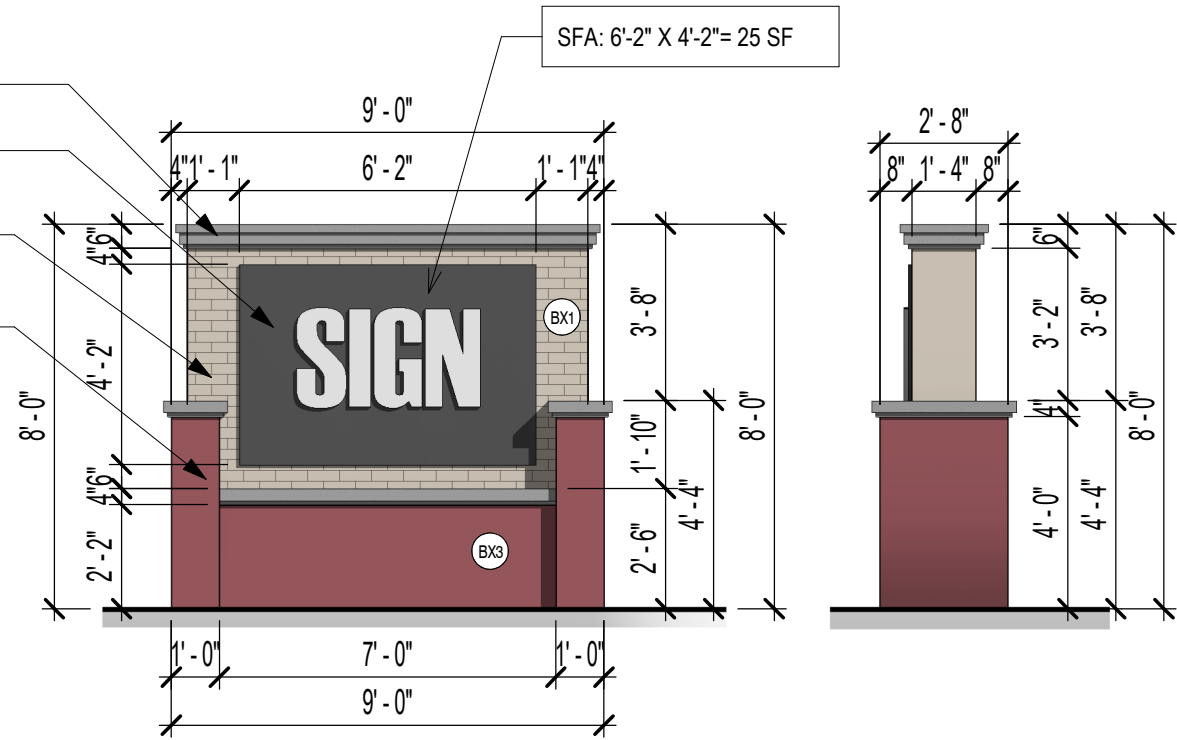
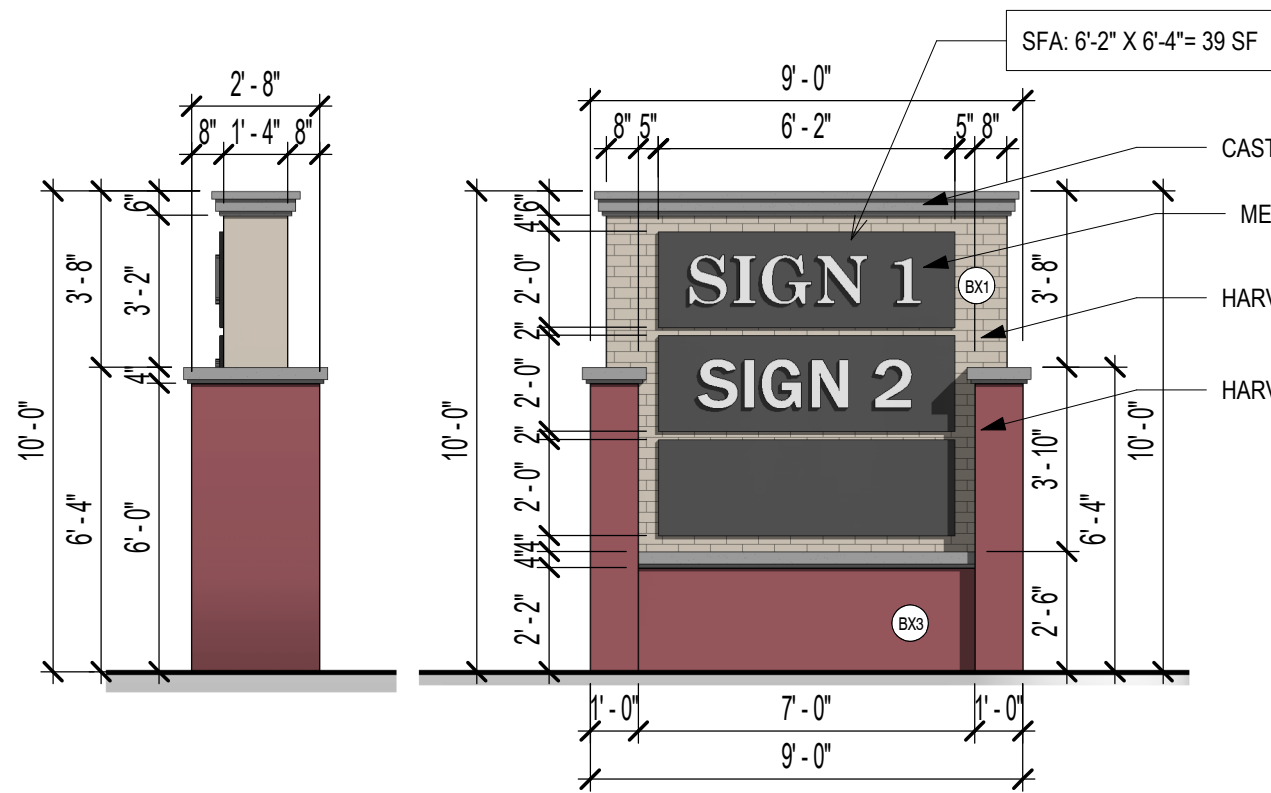


PROJECT



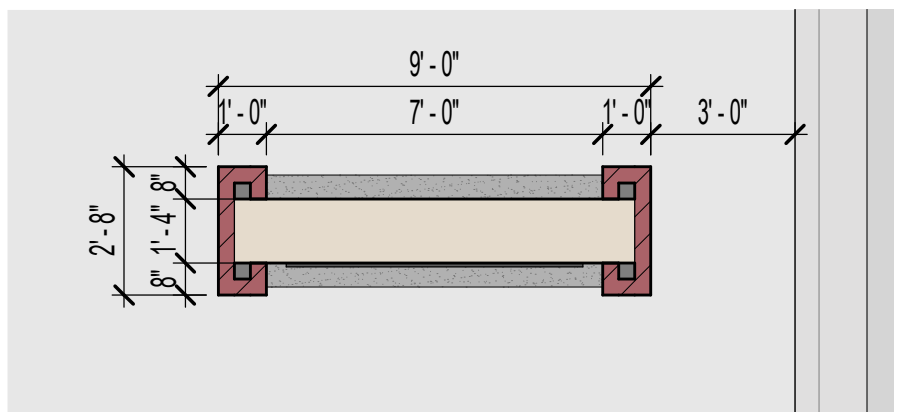
KEY DEVELOPMENT
PARTNERS, LLC

LAGRANGE SQUARE
45 ORLAND SQUARE DRIVE ORLAND PARK, IL
12/06/2019 Project #: 19083



1 MONUMENT SIGN ELEVATION (MULTI-TENANT) - LOT 2
SCALE: 1/4" = 1'-0"

2 MONUMENT SIGN (SINGLE TENANT) - LOT 3
SCALE: 1/4" = 1'-0"



3 MONUMENT SIGN PLAN
SCALE: 1/4" = 1'-0"

