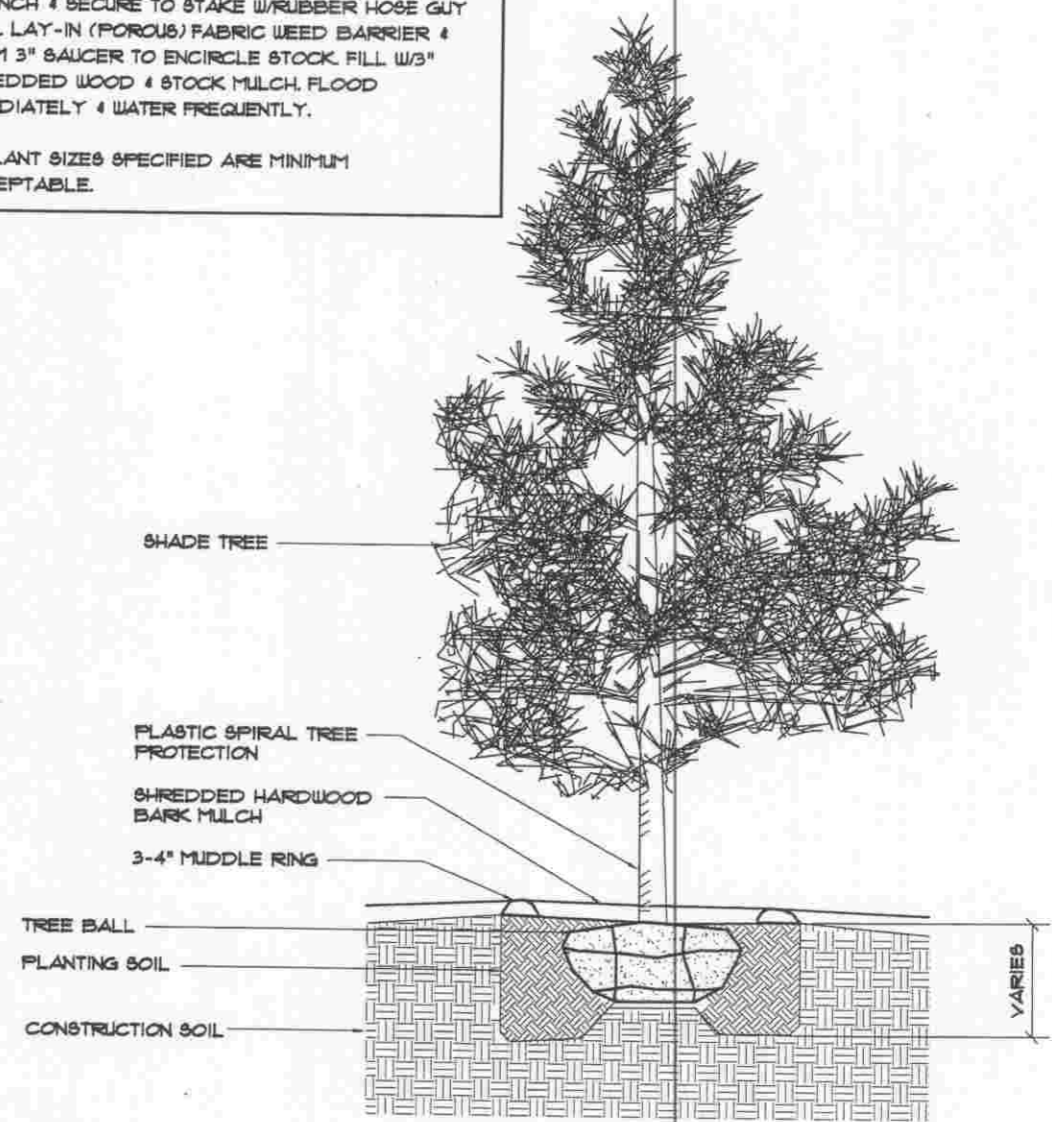


**NOTES:**

1) EXCAVATE 'PLANTING PIT' TWICE THE DIAMETER OF BALL & 6" GREATER IN DEPTH. LOOSEN SUBSOIL W/PICK TO ENSURE POROSITY. PLACE 6" FEAT MOSS IN 'PLANTING PIT' & TAMP. SELECT BEST VIEWING ANGLE, LIFT STOCK BY BALL & PLACE IN 'PLANTING PIT'. UNWRAP TOP HALF OF BALL. BACKFILL W/MIXTURE 1/3 FEAT MOSS-2/3 TOP-SOIL & TAMP. WRAP TRUNK W/PAPER TAPE TO FIRST BRANCH & SECURE TO STAKE W/RUBBER HOSE GUY WIRE. LAY-IN (POROUS) FABRIC WEED BARRIER & FORM 3" SAUCER TO ENCIRCLE STOCK. FILL W/3" SHREDDED WOOD & STOCK MULCH. FLOOD IMMEDIATELY & WATER FREQUENTLY.

2) PLANT SIZES SPECIFIED ARE MINIMUM ACCEPTABLE.



QUANTITY	COMMON NAME	BOTANICAL NAME	PLANTING SIZE (CALIFER)	PLANTING METHOD	DESIGN SIZE	
					SPREAD	HEIGHT
5	LINDEN BEETREE	TILIA HETEROPHYLLA	25" (MIN)	B & B	7'-0"	15'
4	MAPLE RED	ACER RUBRUM	25" (MIN)	B & B	7'-0"	15'



SCALE: N.T.S. 1

SHADOW TREE PLANTING DETAIL

SCALE: N.T.S. 2

**Chicago SMSA**  
 Limited Partnership  
 d/b/a Verizon Wireless  
 1515 Woodfield Rd.  
 Suite 1400,  
 Schaumburg, IL 60173

**Fullerton**  
 Engineering Consultants  
 9100 W. Higgins Rd, Suite 800  
 Rosemont, Illinois 60018  
 Tel. 847-292-0100  
 Fax 847-292-0105

THIS DRAWING IS THE PROPERTY OF FULLERTON ENGINEERING CONSULTANTS, INC. IT IS FOR THE EXCLUSIVE USE OF THIS PROJECT. ANY RE-USE OF THIS DRAWING WITHOUT THE EXPRESSED WRITTEN CONSENT OF FULLERTON ENGINEERING CONSULTANTS, INC. IS PROHIBITED.

SITE NAME			
RT. 7 & WEST			
LOCATION NUMBER			
187771			
PROJECT NUMBER			
2008284367			
SITE ADDRESS			
15501 PARK STATION BLVD. ORLAND PARK, IL 60467			

#	DATE	REVISIONS	
	05/15/09	ZONING	AU
	08/14/09	ZONING	AU

CHECKED BY: RI  
 APPROVED BY: MB

DATE SIGNED: \_\_\_\_\_  
 EXPIRATION DATE: \_\_\_\_\_

SHEET TITLE  
**LANDSCAPING  
 PLAN & DETAILS**

SHEET NUMBER  
**Z-3**