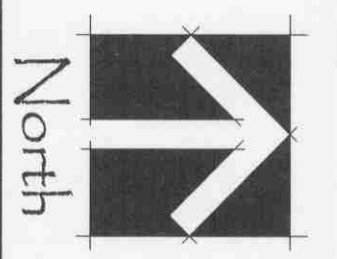


Landscape Plan
Charleton Highlands
Orland Park, Illinois



PREPARED FOR:
D. Sosin
LOCATION:
Orland Park, IL
DATE:
8-17-06
SCALE:
1" = 30'
COMPUTER NAME:
LA-PLAN
JOB NUMBER:
2006-34

SHEET

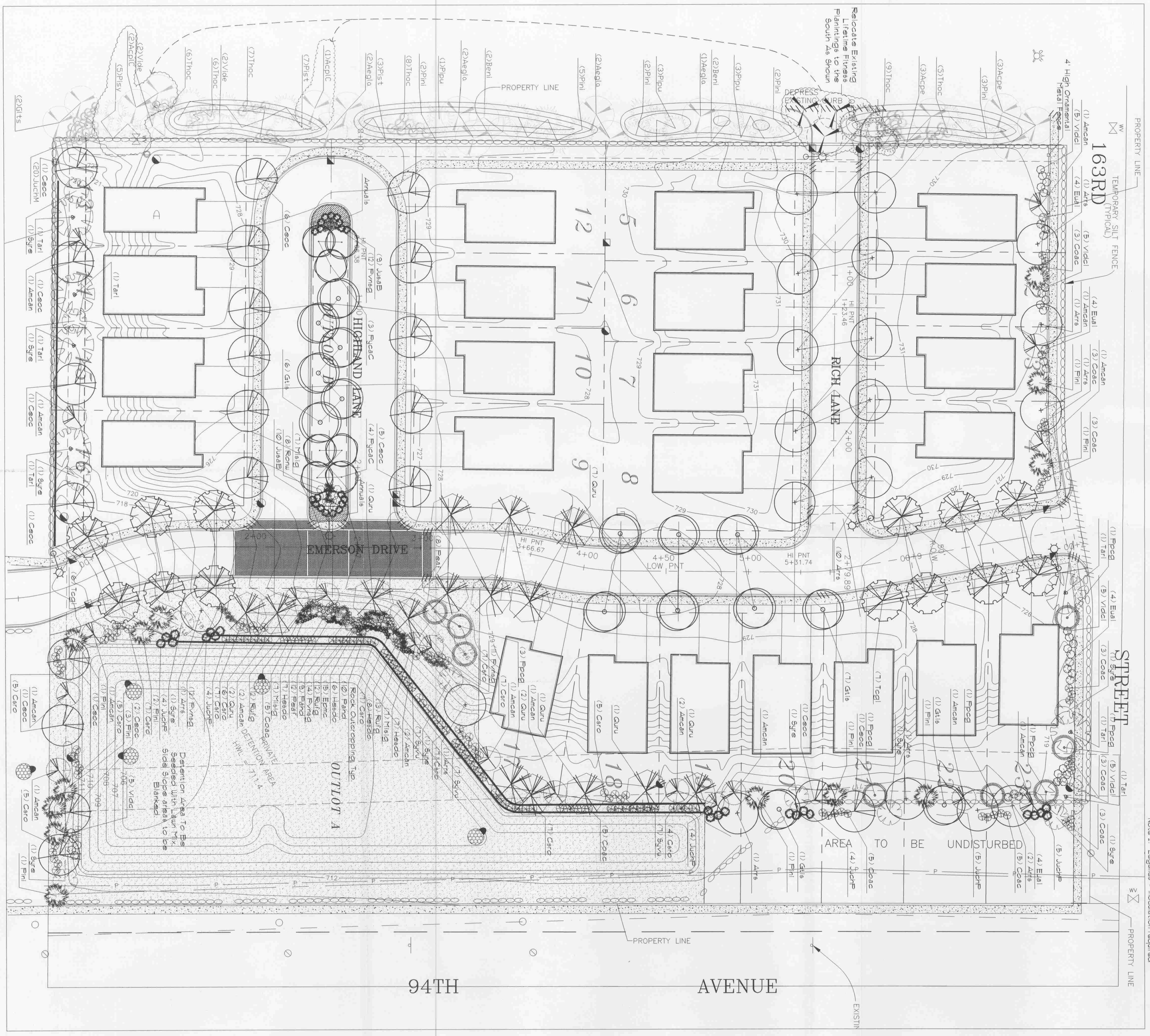
© 2006 Copyright. This Drawing is the Property of Bergford Gregory Land Design

Plant Table

Code Name	Scientific Name	Common Name	Planting Size	Quantity
Atrs	Acer rubrum 'Red Sunset'	Sunset Maple	2 1/2" - Cal	19
Amcan	Ametanthes canadensis	Shadblow seedpod	Ø Clump	19
Caeoc	Callis occidentalis	Common Hackberry	2 1/2" - Cal	21
Cero	Cornus sericea	Red Osier Dogwood	3/6" H.	19
Cocac	Colomesastix acutifolia	Pink Colomesastix	3/6" H.	36
Epmc	Echinacea purpurea 'Magnus'	Purple Coneflower	1-Gal	15
Eulal	Eurochorda alata	Winged eurochorda	3/6" H.	16
Gls	Gleditsia triacanthos 'Inermis Skyline'	Skyline Honeylocust	2 1/2" - Cal	15
Hesdc	Hemerocallis 'Stella de Oro'	Stella de Oro Daylily	1-Gal	29
Jucp	Juniperus chinensis 'Fritzlerana'	Fritzler Juniper	24" - Spread	21
Jusab	Juniperus sibirica 'Broadmoor'	Broadmoor Juniper	24" - Spread	19
Misag	Miscanthus sinensis 'Gracillimus'	Ornamental Grass	1-Gal	26
Pmvg	Panicum virgatum 'Northwind'	Northwind Switch Grass	1-Gal	50
Pdvd	Peristichia alpestris 'Hamelii'	Dwarf Fountain Grass	1-Gal	19
Pfgr	Perovskia atriplicifolia 'Filigran'	Filigran Russian Sage	1-Gal	20
Ppcc	Picea pungens	Colorado Green Spruce	6" - 8" H.	0
Pm	Pinus nigra	Austrian Pine	6" - 8" H.	13
Pycac	Fagus ciliata 'Chanticleer'	Chanticleer Pear	2 1/2" - Cal	1
Quru	Quercus rubra	Northern red oak	2 1/2" - Cal	15
Roa	Rosa 'Nearly Wild'	Nearly Wild Rose	3/6" H.	0
Rufg	Rudbeckia hirta 'Goldstrum'	Goldstrum Black-eyed Susan	1-Gal	37
Syru	Syringa reticulata	Japanese tree lilac	Ø Clump	10
Syru	Syringa vulgaris	Common lilac	3/6" H.	21
Tah	Tilia americana 'Radmond'	Radmond Linden	2 1/2" - Cal	1
Tggl	Tilia cordata 'Greenpire'	Greenpire Linden	2 1/2" - Cal	13
Vlur	Viburnum dentatum 'Chicago Lustre'	Chicago Lustre Viburnum	3/6" H.	25

LANDSCAPE NOTES:
1. REFER TO PLAN OR SURVEY FOR LEGAL DESCRIPTION BOUNDARY DIMENSIONS AND EXISTING CONDITIONS.
2. REFER TO ARCHITECTURAL PLANS FOR BUILDING FLOOR SIZE AND FOOTPRINT.
3. REFER TO ENGINEERING PLANS FOR DETENTION CALCULATIONS, UTILITY LOCATIONS, ENGINEERING INFORMATION AND THE LIKE.
4. REFER TO LANDSCAPE PLAN ALL AREAS AND DIMENSIONS ARE APPROXIMATE.
5. ALL PLANT MATERIAL ON THIS PLANTING PLAN REPRESENTS THE INTENTION SPECIES AND LOCATIONS MAY VARY IN THE FIELD DUE TO MODIFICATIONS IN THE SITE APPROXIMATIONS AND THE AVAILABILITY OF PLANT MATERIAL AT THE TIME OF THE PROJECT. SUCH CHANGES MUST FIRST BE APPROVED BY THE OWNER IN WRITING.
6. ALL PLANT MATERIAL SHALL BE PLANTED WITH A MINIMUM OF SIX INCHES OF ORGANIC SOIL AND MULCHED WITH A SHEEPDED BARK MATERIAL TO A MINIMUM 3" DEPTH.
7. ALL LAIN AREAS ON THIS PLAN SHALL BE SOIL UNLESS OTHERWISE NOTED.
8. THIS LANDSCAPE PLAN ASSURES THE SITE SHALL BE PREPARED WITH TOP SOIL TO BE PLANTED ON. THE CONTRACTOR SHALL BE RESPONSIBLE FOR THE SOIL TO BE PLANTED ON. THE CONTRACTOR SHALL BE RESPONSIBLE FOR THE SOIL TO BE PLANTED ON. THE CONTRACTOR SHALL BE RESPONSIBLE FOR THE SOIL TO BE PLANTED ON.
9. ALL PLANT MATERIAL SHALL BE NURSERY GROWN STOCK AND SHALL BE ALL MATERIALS SHOWN ON THE PLAN AND SHOULD NOT RELY ON THE PLANT SCHEDULE FOR DETERMINING QUALITIES.
10. THE CONTRACTOR SHALL BE RESPONSIBLE FOR OBTAINING ALL NECESSARY PERMITS AND APPROVALS FROM THE APPROPRIATE AGENCIES AND SHALL BE RESPONSIBLE FOR THE COST OF SUCH PERMITS AND APPROVALS.
11. ALL PLANT MATERIAL SHALL BE PLANTED WITHIN THE SPECIFIED PLANTING PERIODS AND SHALL BE PLANTED WITHIN THE SPECIFIED PLANTING PERIODS AND SHALL BE PLANTED WITHIN THE SPECIFIED PLANTING PERIODS.
12. THE CONTRACTOR SHALL BE RESPONSIBLE FOR THE COST OF ALL MATERIALS AND LABOR REQUIRED FOR THE INSTALLATION AND MAINTENANCE OF THE LANDSCAPE.
13. THE CONTRACTOR SHALL BE RESPONSIBLE FOR THE COST OF ALL MATERIALS AND LABOR REQUIRED FOR THE INSTALLATION AND MAINTENANCE OF THE LANDSCAPE.
14. ANY EXISTING TREES TO BE RETAINED SHALL BE PROTECTED FROM BOTH THE CONTRACTOR AND THE OWNER. THE CONTRACTOR SHALL BE RESPONSIBLE FOR THE COST OF ALL MATERIALS AND LABOR REQUIRED FOR THE PROTECTION OF SUCH TREES.
15. ALL GRASS CLUMPS, OTHER VEGETATION, TREES & STONES ETC. SHALL BE RAKED OR REMOVED FROM PLANTING AND LAWN AREAS PRIOR TO THE INSTALLATION OF PLANTING OPERATIONS.
16. ANY AREAS TO BE TOWED AND REEDED UNLESS OTHERWISE NOTED SHALL BE TOWED AND REEDED PRIOR TO PLANTING OPERATIONS.
17. THE CONTRACTOR SHALL VERIFY THE LOCATION OF ALL UNDERGROUND UTILITIES PRIOR TO PLANTING OPERATIONS.
18. THE CONTRACTOR SHALL BE RESPONSIBLE FOR THE COST OF ALL MATERIALS AND LABOR REQUIRED FOR THE INSTALLATION AND MAINTENANCE OF THE LANDSCAPE.
19. THE CONTRACTOR SHALL BE RESPONSIBLE FOR THE COST OF ALL MATERIALS AND LABOR REQUIRED FOR THE INSTALLATION AND MAINTENANCE OF THE LANDSCAPE.
20. THE CONTRACTOR SHALL BE RESPONSIBLE FOR THE COST OF ALL MATERIALS AND LABOR REQUIRED FOR THE INSTALLATION AND MAINTENANCE OF THE LANDSCAPE.

Planting Area Seed Mix:
Grass: 40%
Alopecurus or KY 31 20%
Perennial Ryegrass 20%
Birdfoot Trefoil 2/ 10%
Bouteloua Curtipendula (Side-Oats Grass) 10%
Ryegrass 10%
Note 1: Ficus pumila distans
Note 2: Legumes - inoculation required



163RD AVENUE
EMERSON DRIVE
94TH AVENUE

AREA TO BE UNDISTURBED

EXISTING