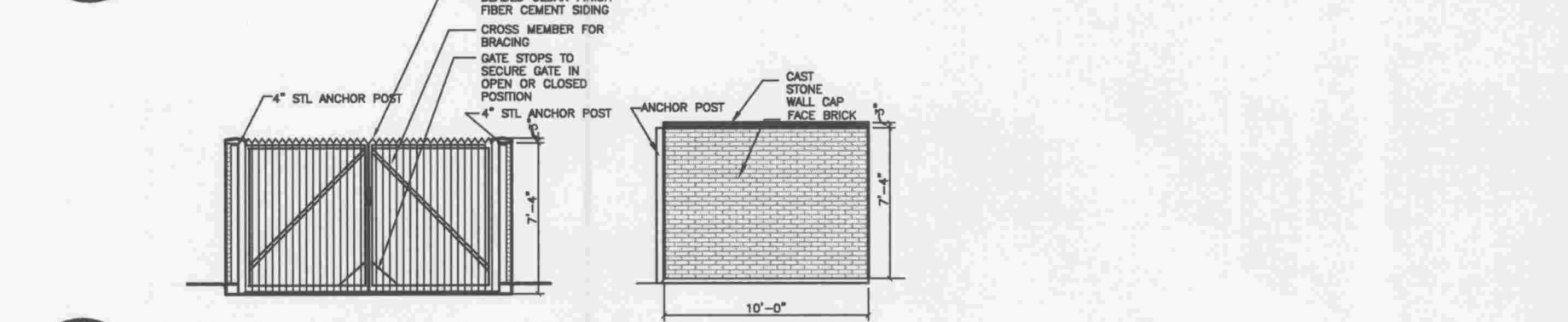


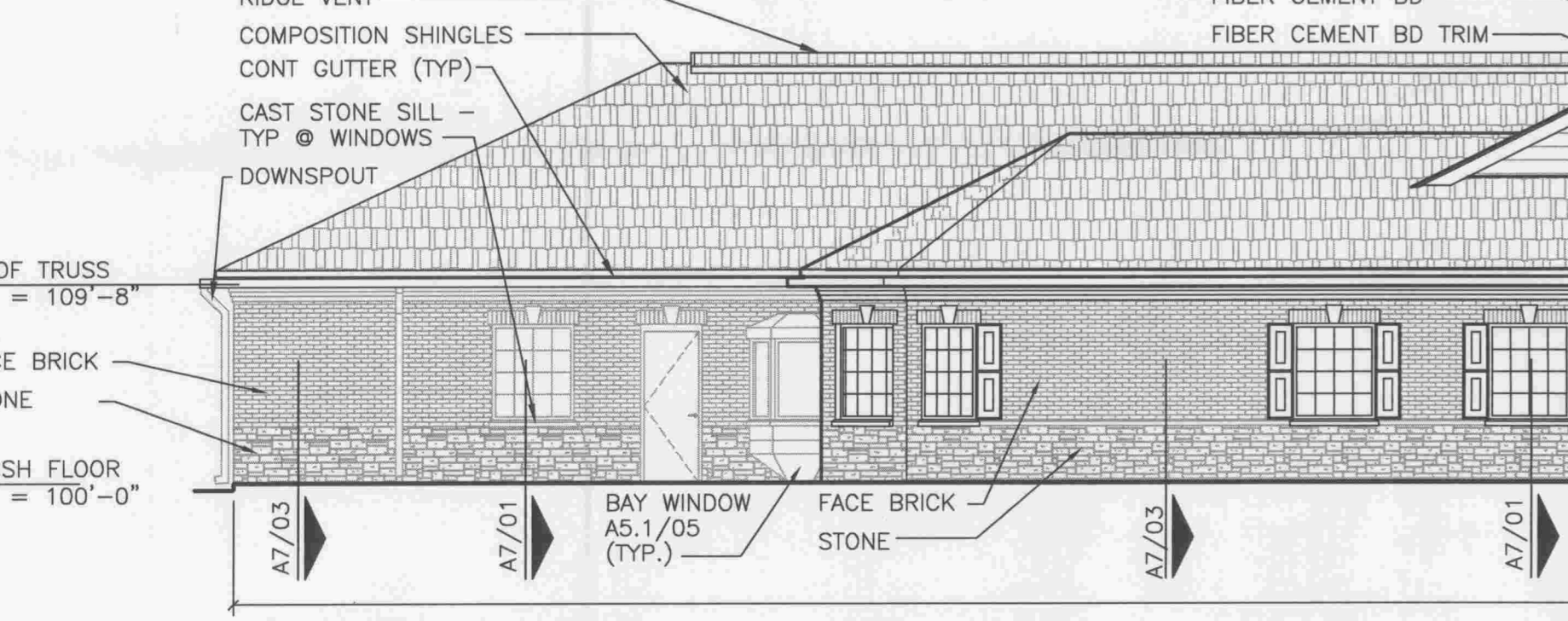
TYPICAL CONSTRUCTION NOTES			
<b>BRICK VENEER WALL U.L. 354 DESIGN</b>	<b>STONE VENEER WALL U.L. 354 DESIGN</b>	<b>SLOPED ROOF, ATTIC &amp; CEILING U.L. P522 DESIGN</b>	<b>SOFFIT</b>
<ul style="list-style-type: none"> <li>- FACE BRICK VENEER</li> <li>- 1 3/4" AIR SPACE</li> <li>- TYVEK WRAP</li> <li>- 5/8" EXT SHEATHING</li> <li>- 2x6 WOOD STUDS @ 16" O.C.</li> <li>- R-19 BATT INSULATION IN STUD CAVITY</li> <li>- 6 MIL. POLY. VAPOR BARRIER FROM FLOOR</li> <li>- 5/8" TYPE X GWB</li> </ul>	<ul style="list-style-type: none"> <li>- STONE VENEER</li> <li>- 1 3/4" AIR SPACE</li> <li>- TYVEK WRAP</li> <li>- 5/8" EXT SHEATHING</li> <li>- 2x6 WOOD STUDS @ 16" O.C.</li> <li>- R-19 BATT INSULATION IN STUD CAVITY</li> <li>- 6 MIL. POLY. VAPOR BARRIER FROM FLOOR</li> <li>- 5/8" TYPE X GWB</li> </ul>	<ul style="list-style-type: none"> <li>- ASPHALT SHINGLES</li> <li>- 30# BUILDING FELT</li> <li>- ICE &amp; WATER SHIELD, MIN. 48" BEY. INT. WALL</li> <li>- ALSO AT TYPICAL EAVES, VALLEYS &amp; HIPS</li> <li>- 5/8" OSB ROOF DECK</li> <li>- ENGINEERED WOOD TRUSSES</li> <li>- R-30 BATT INSULATION @ BOTTOM CHORDS</li> <li>- 7/8" FURRING CHANNELS</li> <li>- VAPOR BARRIER</li> <li>- 5/8" TYPE X GWB</li> </ul>	<ul style="list-style-type: none"> <li>- PRE ENGINEERED WOOD TRUSSES</li> <li>- 5/8" EXT SHEATHING</li> <li>- PLYWOOD SOFFIT VENTED</li> </ul>
<b>MODIFIED BITUMEN ROOF</b>			
<ul style="list-style-type: none"> <li>- MODIFIED BITUMEN ROOFING</li> <li>- 3" MIN. RIGID INSULATION BOARD</li> <li>- SLOPED AT 1/4" PER FOOT TO ROOF DRAIN</li> <li>- 5/8" OSB ROOF DECK</li> </ul>			

EXTERIOR MATERIAL LEGEND			
	COMPOSITE SHINGLES		FIBER CEMENT BD
	FACE BRICK		MECHANICAL SCREEN
	STONE	*FINAL COLOR & STYLE TO BE APPROVE BY OWNER	
EXTERIOR MATERIAL SCHEDULE			
MATERIAL	MANUFACTURER	NAME	STYLE #
BRICK	BORAL	SIERRA	KING SIZE
STONE	BUECHEL	MILL GREEN	COUNTRY SQUIRE
MORTAR	LEIGH	WHITE MASONRY	
ROOF	TIMBERLINE	WEATHERED WOOD	SHADOW ACCENT
SOFFIT	VALSPAR	DESERT FORTRESS	2008-10B
WINDOWS	NA	PUTTY	
SHUTTERS	NA		
SILLS/CAST STONE	BETTER CAST STONE	#4	
HARDY BOARD	JH SIDING PRODUCTS	COLOR PLUS KHAKI BROWN	
FRONT ENTRANCE DOOR	DW DISTRIBUTION INC.	TEXAS STAROVAL PLATINUM	300-845

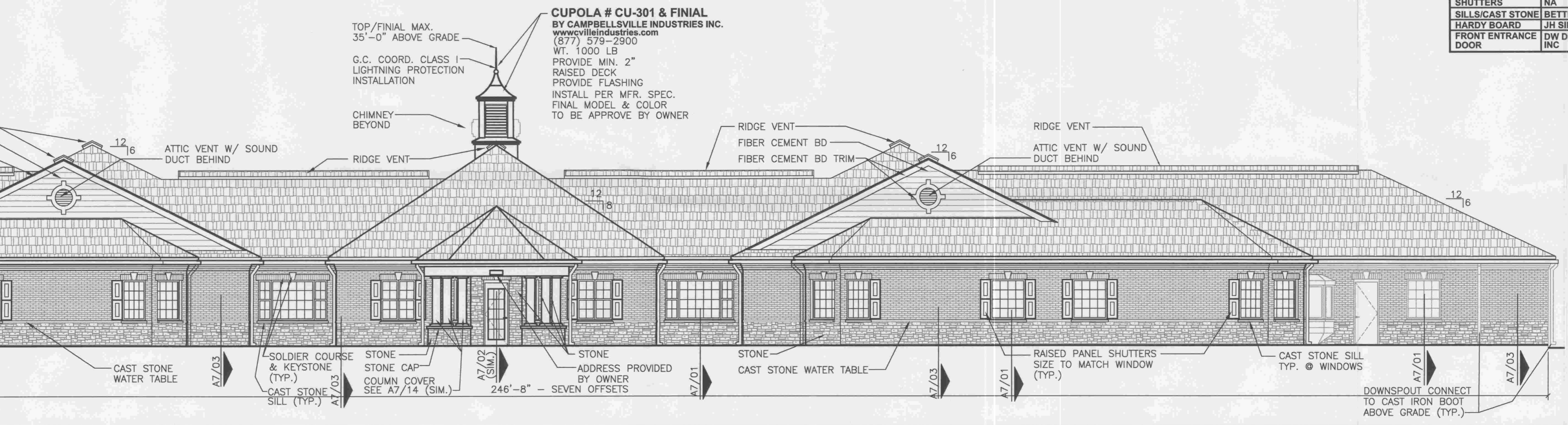
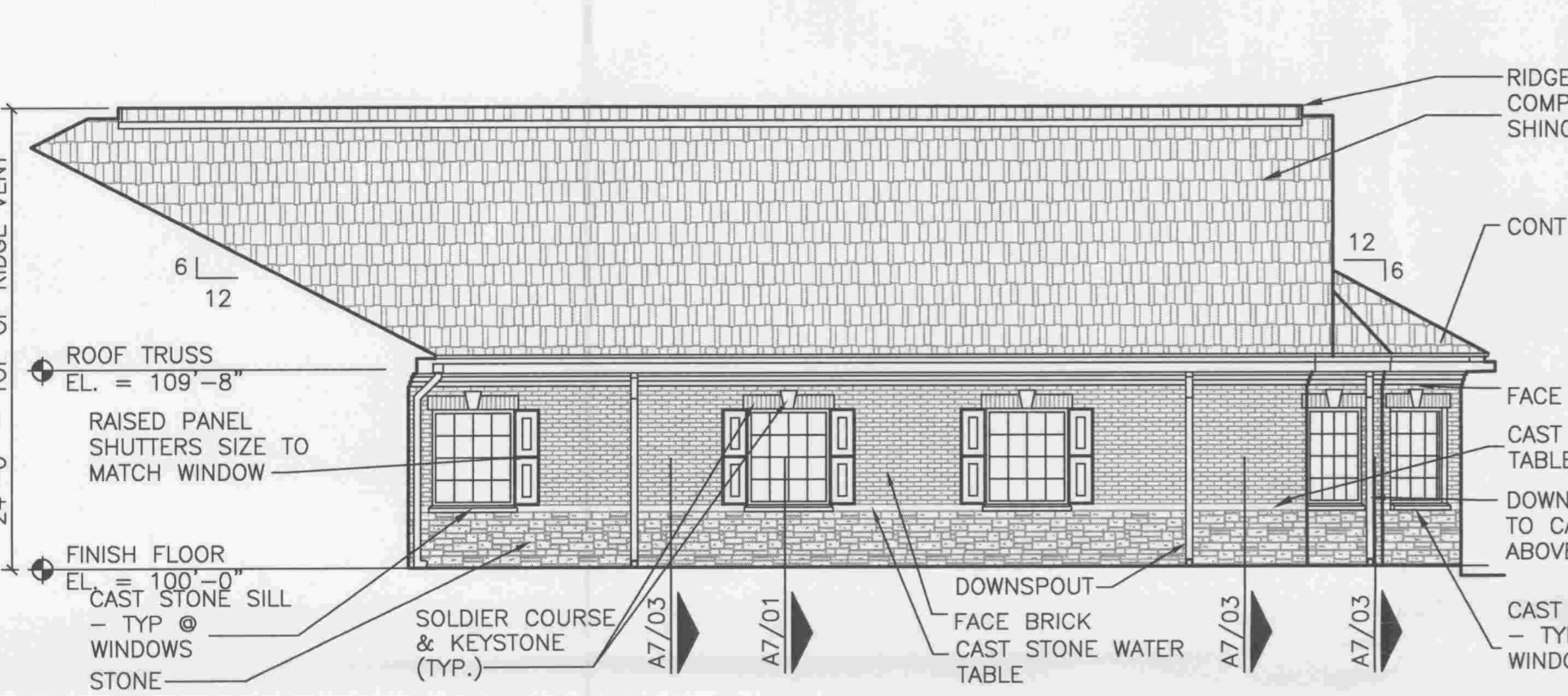
**10 STORAGE SHED ELEVATIONS**  
SCALE: 1/8" = 1'-0"



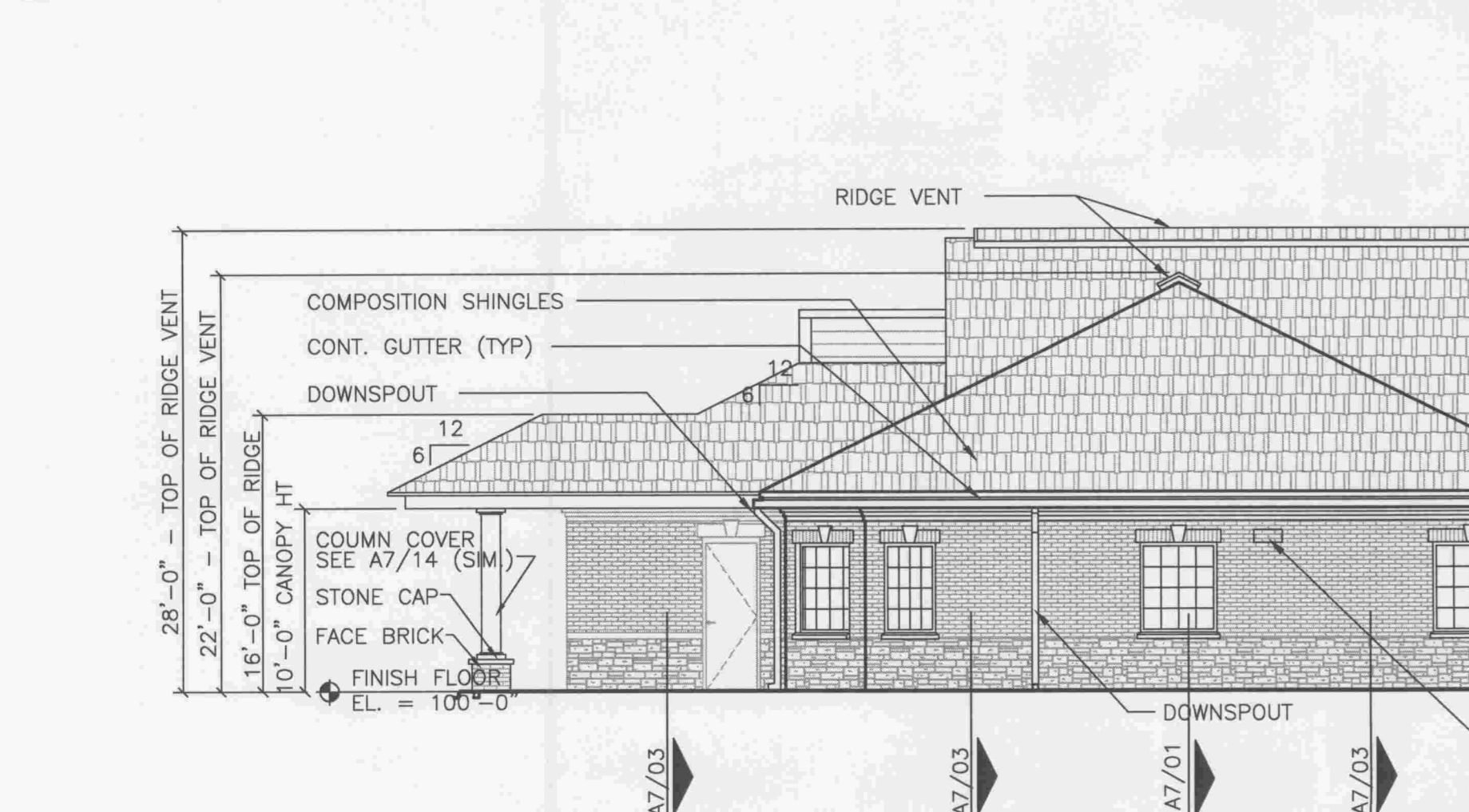
**11 DUMPSTER ELEVATIONS**  
SCALE: 1/8" = 1'-0"



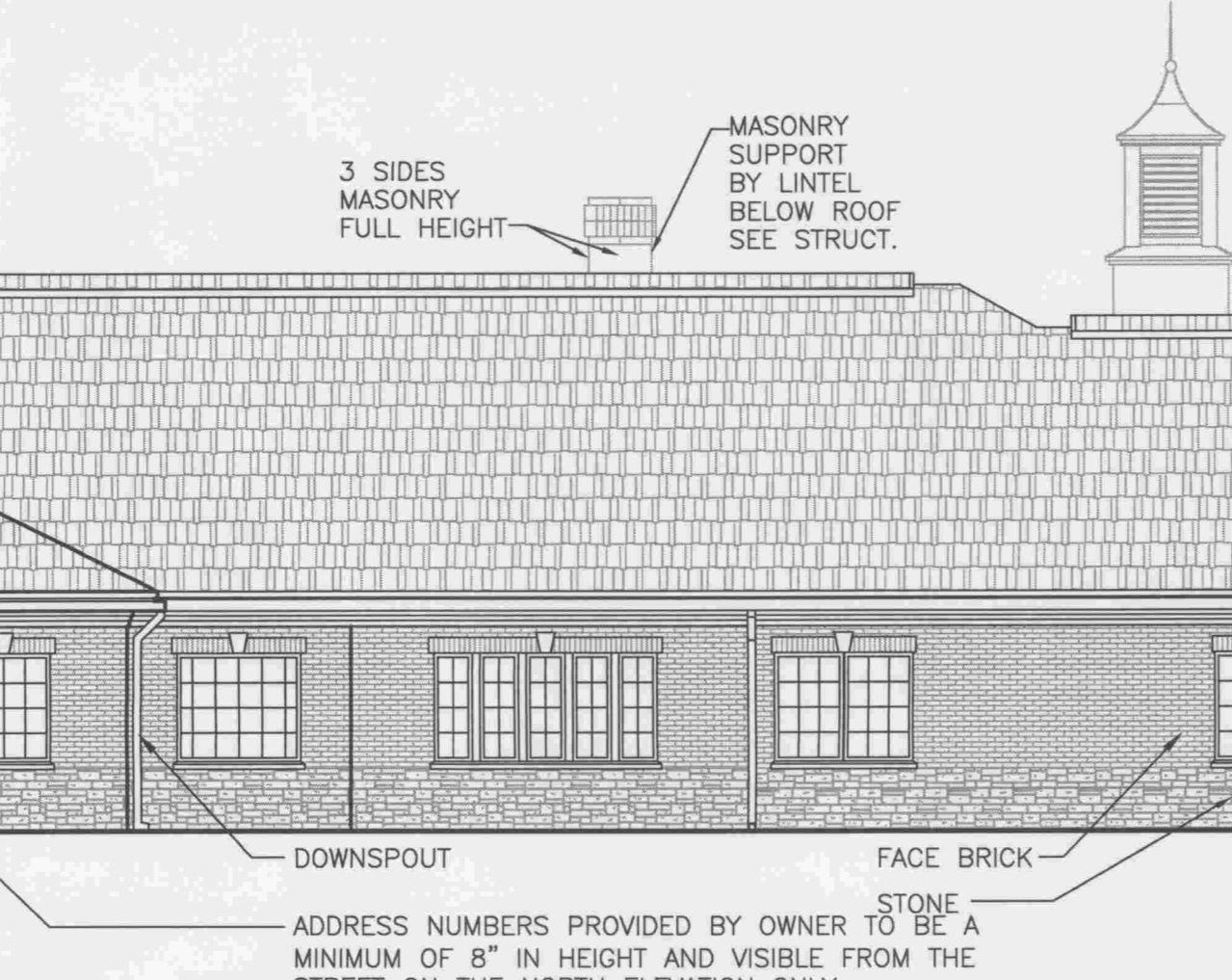
**01 WEST ELEVATION**  
SCALE: 1/8" = 1'-0"



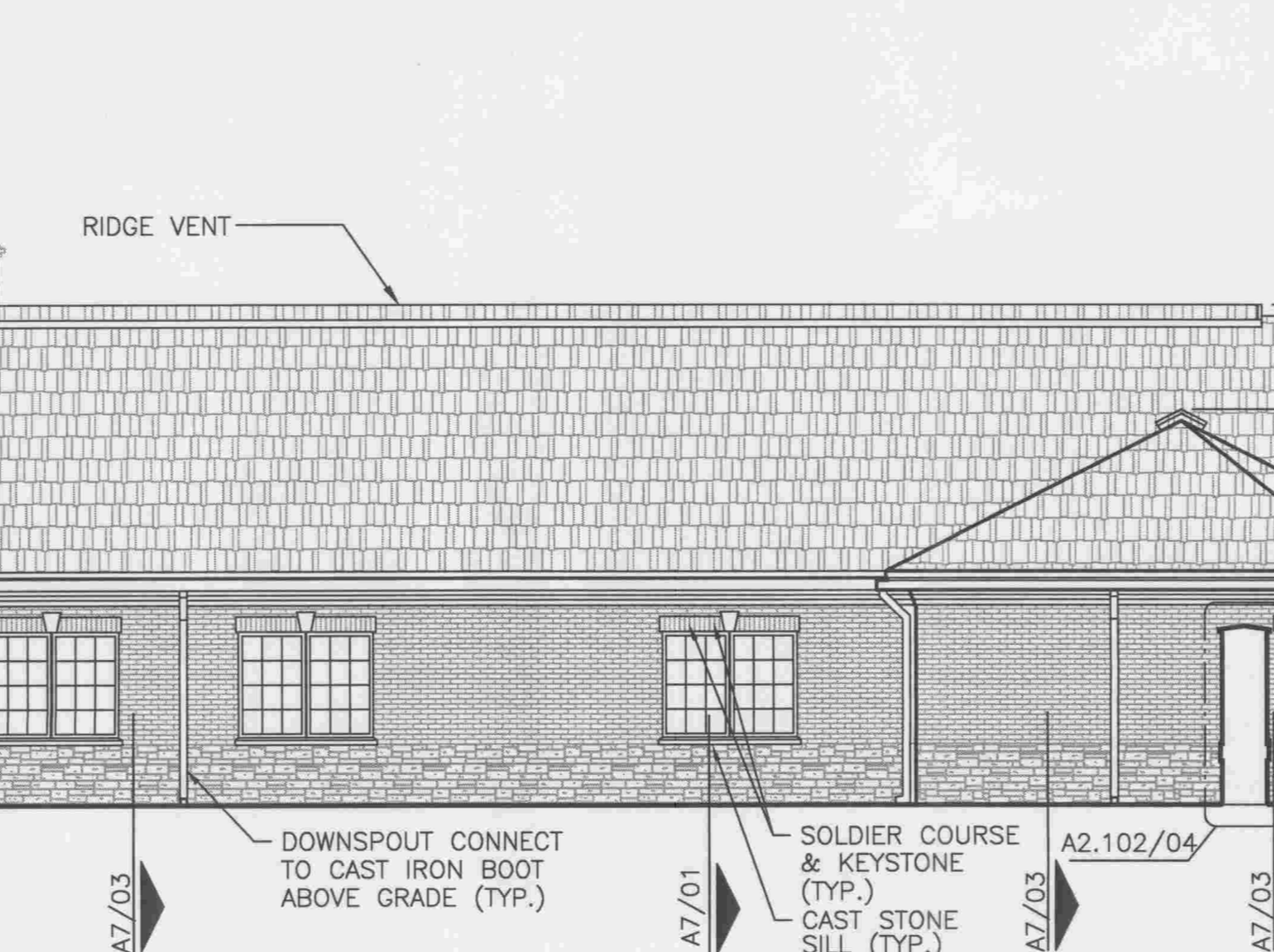
**04 PARTIAL NORTH AND SOUTH ELEVATIONS**  
SCALE: 1/8" = 1'-0"



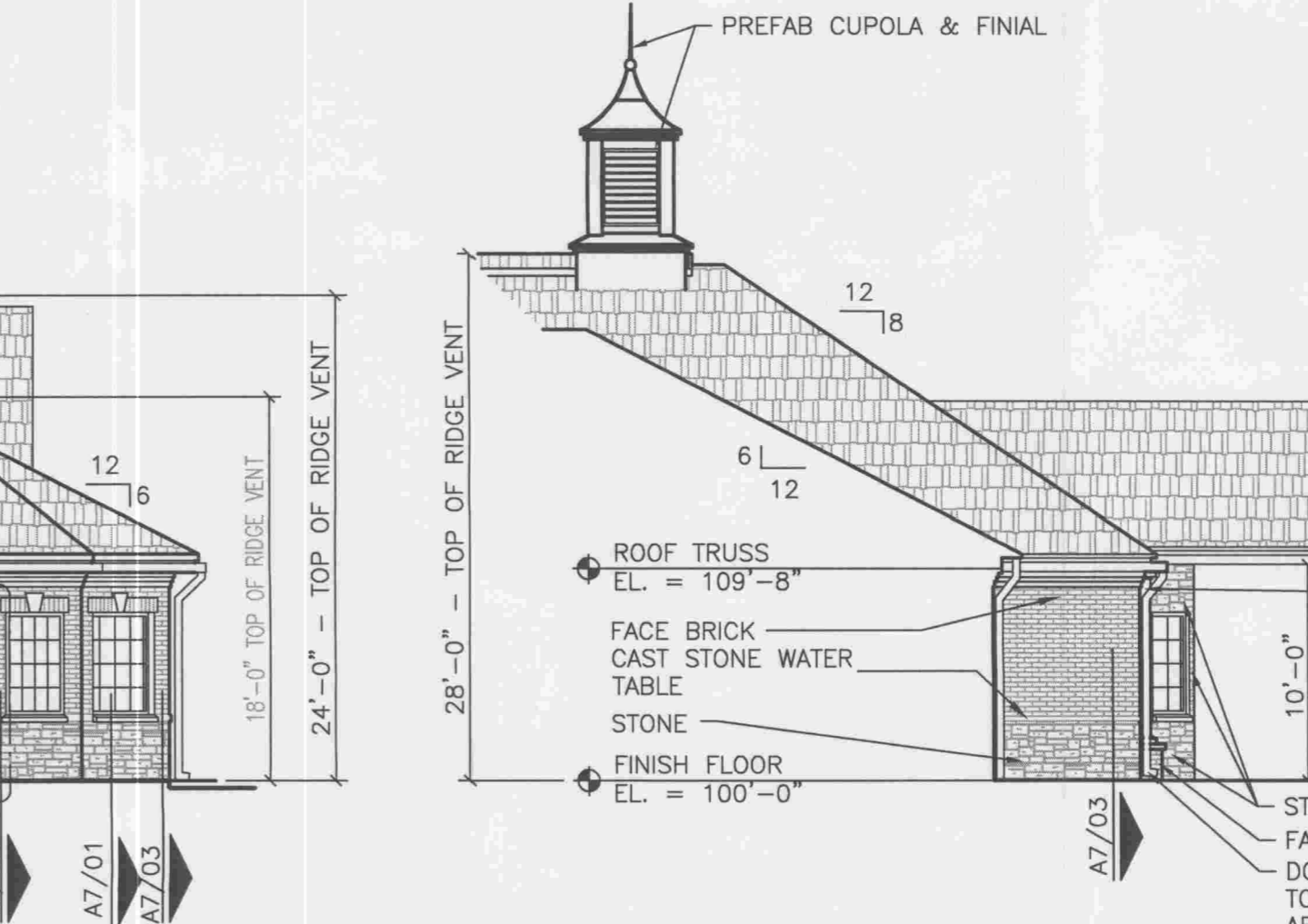
**05 GREENHOUSE ELEVATION**  
SCALE: 1/8" = 1'-0"



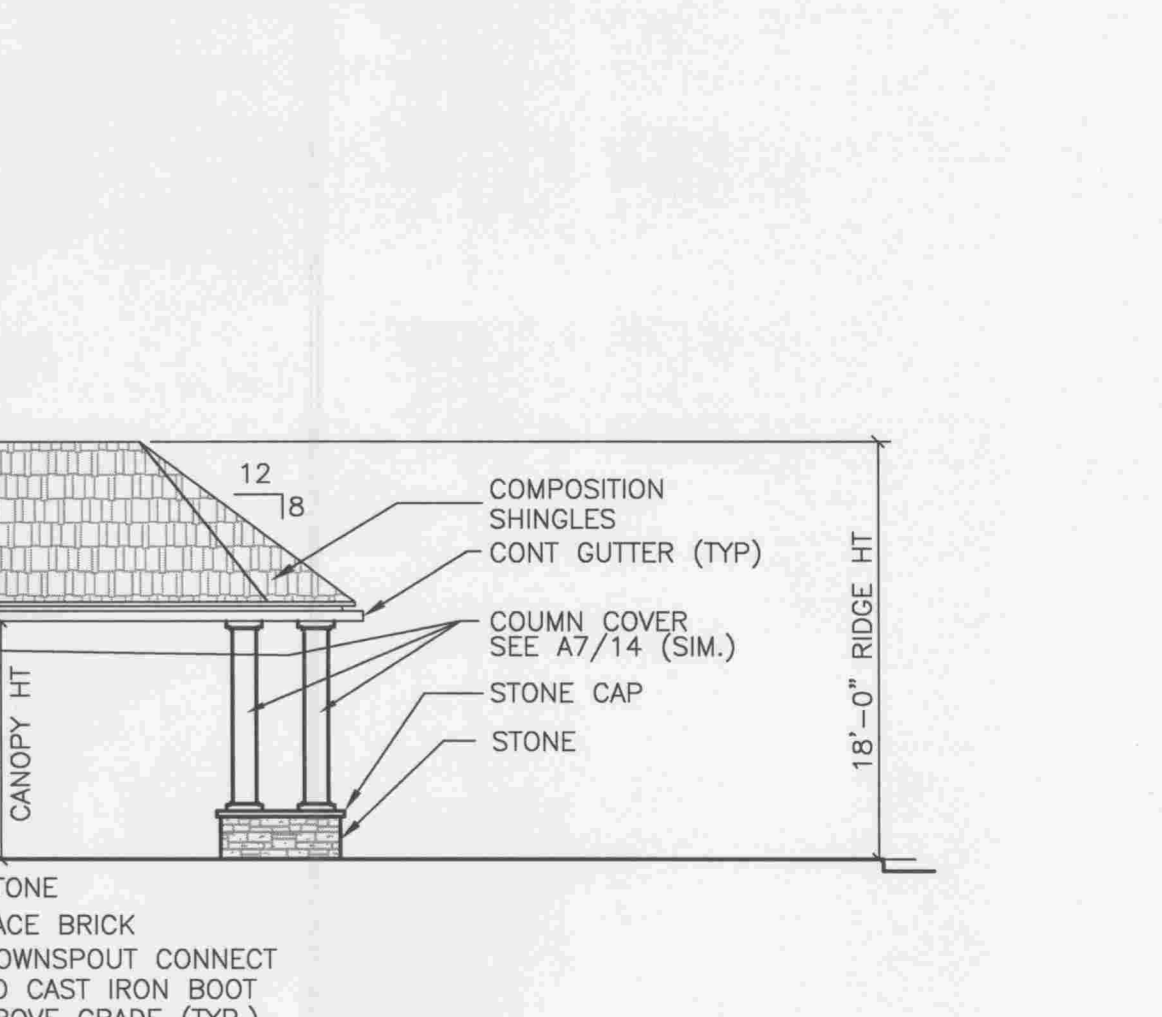
**06 INTERIOR COURTYARD**  
SCALE: 1/8" = 1'-0"



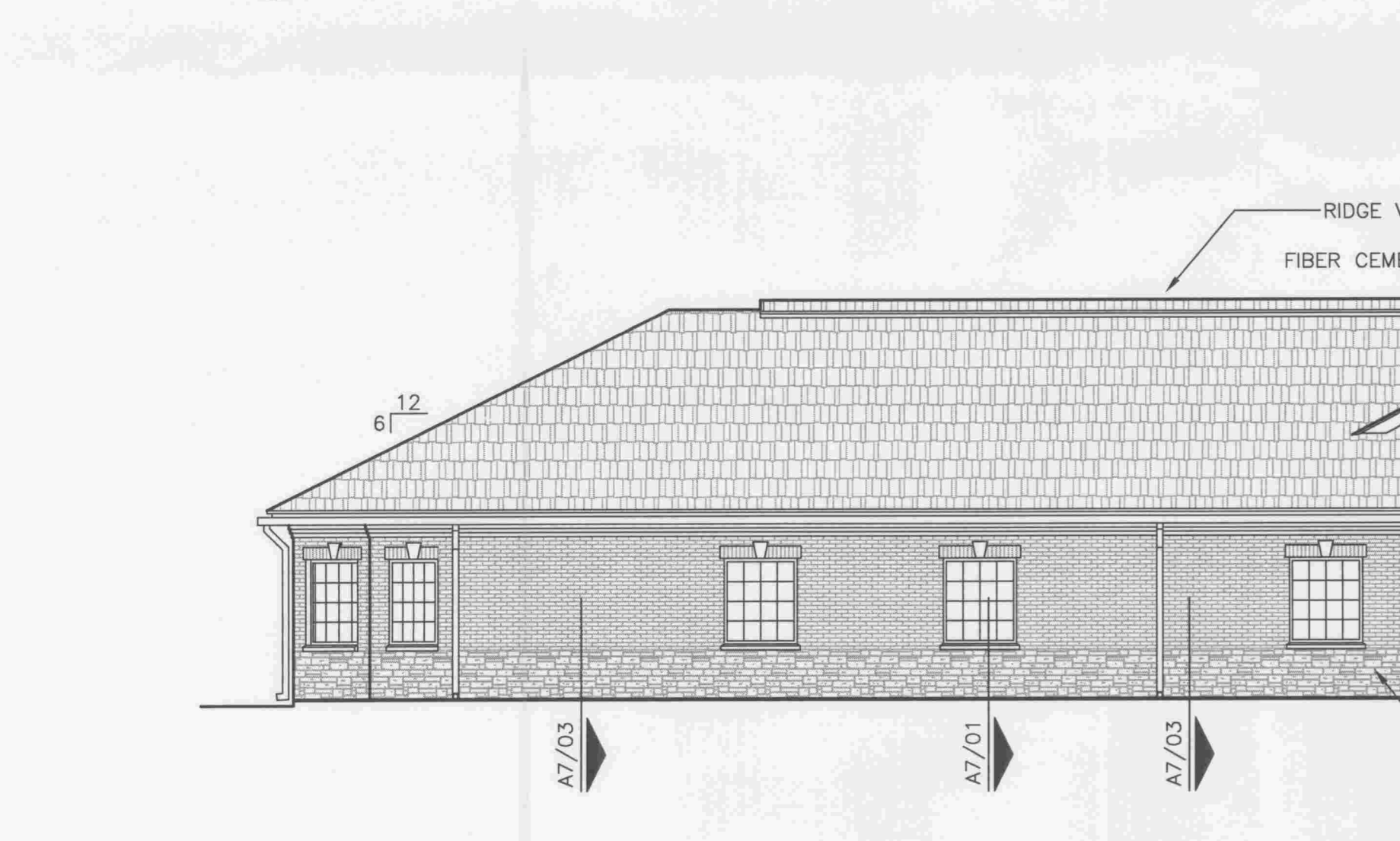
**07 INTERIOR COURTYARD**  
SCALE: 1/8" = 1'-0"



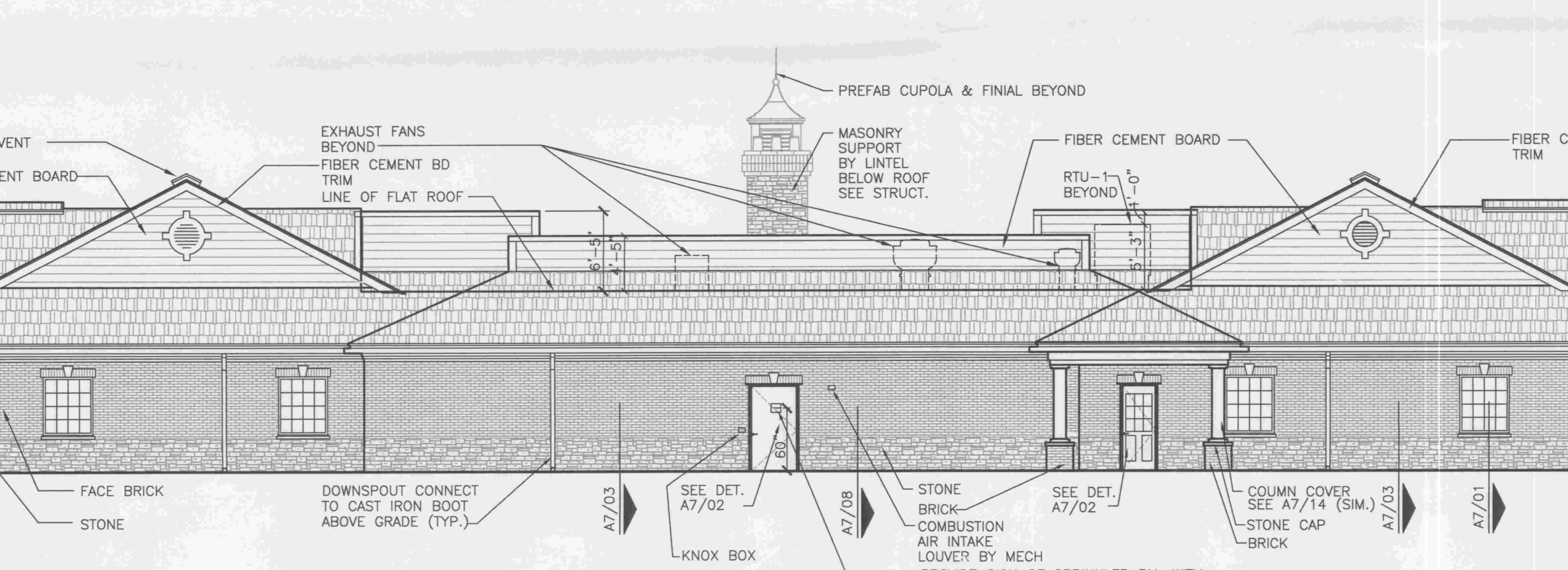
**09 INTERIOR COURTYARD**  
SCALE: 1/8" = 1'-0"



**02 NORTH AND SOUTH ELEVATION**  
SCALE: 1/8" = 1'-0"



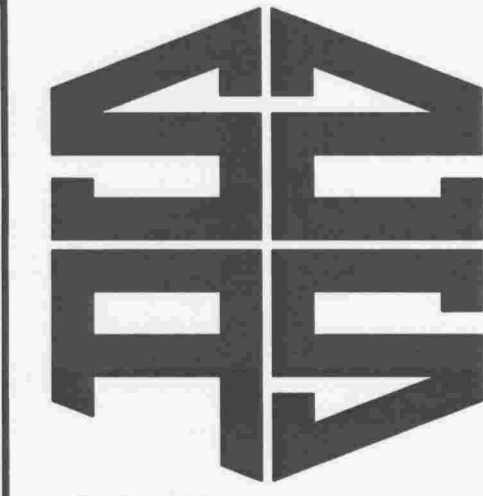
**03 PARTIAL EAST AND PARTIAL WEST ELEVATION**  
SCALE: 1/8" = 1'-0"



**08 EAST ELEVATION**  
SCALE: 1/8" = 1'-0"



**03 PARTIAL EAST AND PARTIAL WEST ELEVATION**  
SCALE: 1/8" = 1'-0"



**SAS ARCHITECTS & PLANNERS**  
630 DUNDEE ROAD  
NORTHBROOK, ILLINOIS 60062  
847-564-9333 • FAX 847-564-9989  
WWW.SASARCH.COM

**ARCHITECTS**  
The LaSalle Group, Inc.  
845 E. John Carpenter Freeway, Suite 945  
Las Colinas, Texas 75062  
214-239-8400 • FAX 214-239-8401  
www.LaSalleGroup.com

**AUTUMN LEAVES ASSISTED LIVING**  
ORLAND PARK ILLINOIS  
**EXTERIOR ELEVATIONS**

NO.	DESCRIPTION	DATE
ZONING CORRECTION		03-03-2008
REV. FOR CITY MEETING		03-17-2008
MARCH 24, 2008		

DRAWN BY: SW  
APPROVED BY: MCA  
JOB NO.: 06073  
DATE: 12-15-2007  
SHEET NO.

**ELEVS.**  
© 2007 SAS ARCHITECTS AND PLANNERS