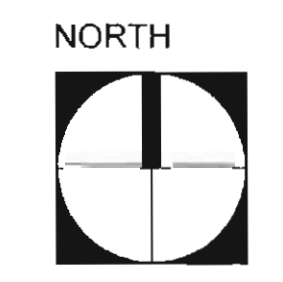
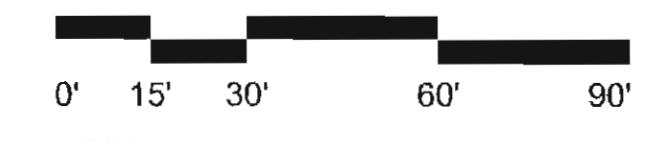


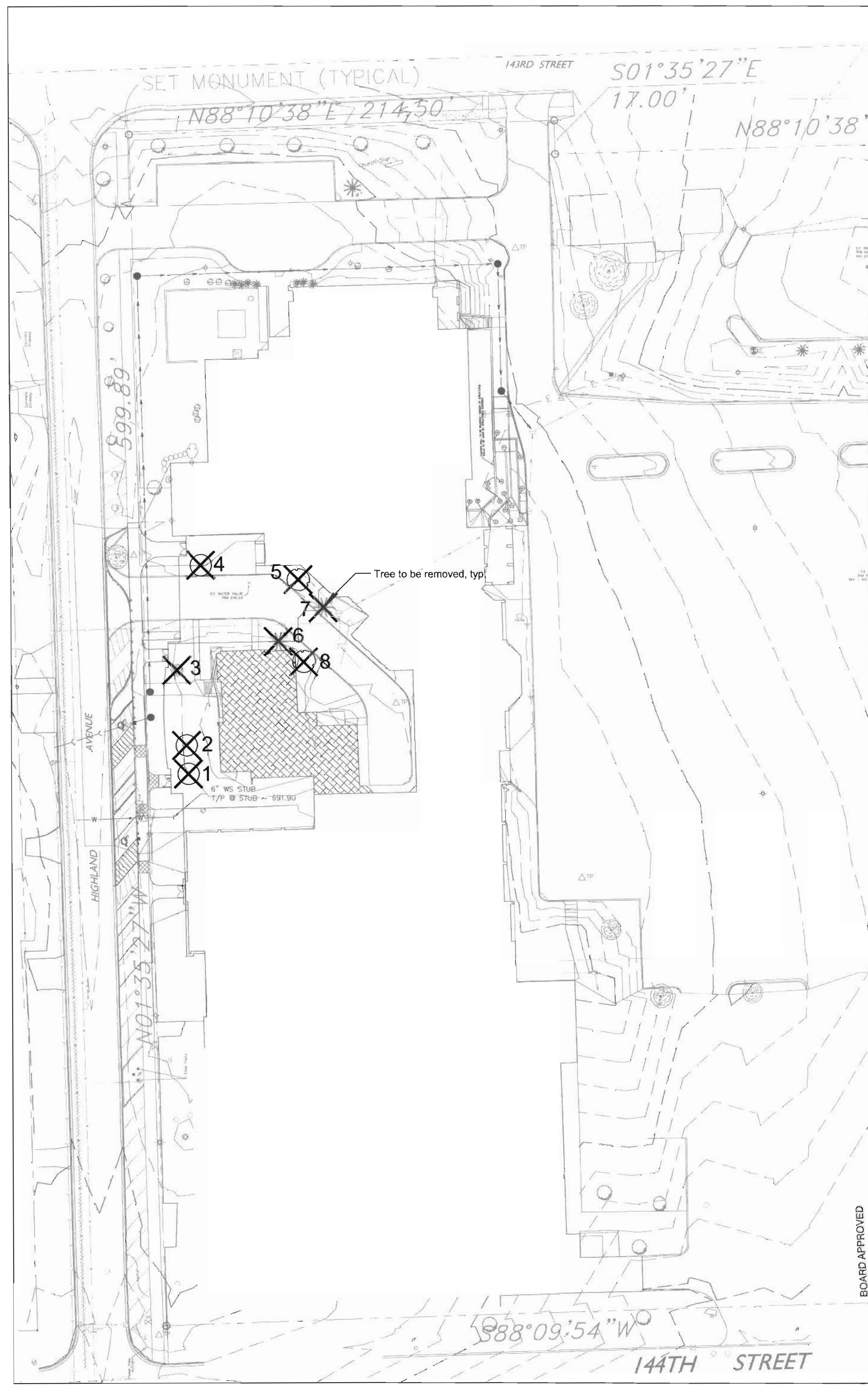
REVISIONS

No.	Date	Issue
	12.21.07	75% Progress Set
	03.06.08	Issued for permit
▲	06.03.08	Revised Permit Set
▲	06.06.08	Construction Set



**Tree Removals**

#	Size	Botanical Name	Common Name	Notes	Replacement Actions
1	5"	<i>Pyrus calleryana</i>	Pear variety		(2) 2.5" cal. trees
2	5"	<i>Pyrus calleryana</i>	Pear variety		(2) 2.5" cal. trees
3	8"	<i>Pyrus calleryana</i>	Pear variety		(2) 2.5" cal. trees
4	3.5"	<i>Pyrus calleryana</i>	Pear variety	transplant	none
5	4"	<i>Crataegus phaenopyrum</i>	Washington Hawthorn	multi-stemmed	(2) 2.5" cal. trees
6	12"	<i>Picea</i>	Spruce		(2) 2.5" cal. trees
7	12"	<i>Pinus nigra</i>	Austrian Pine		(2) 2.5" cal. trees
8	4"	<i>Malus</i>	Crabapple	multi-stemmed	(2) 2.5" cal. trees



BOARD APPROVED  
CASE NO. 2008-0612  
DATE 11-3-08  
W/CONDITIONS  
W/O CONDITIONS