

**Project Name**

**Estates at Ravinia Meadows - Elevations**

**Address**

SWC of La Grange Rd & 159th St  
Orland Park, IL 60467

**PINs**

27-21-200-010 & 21-21-400-004

**Drawings Prepared by**  
**Drawing Revision Date**  
**Scale**

**Pulte Group**  
**8-Nov-24**  
**Varies by Page**

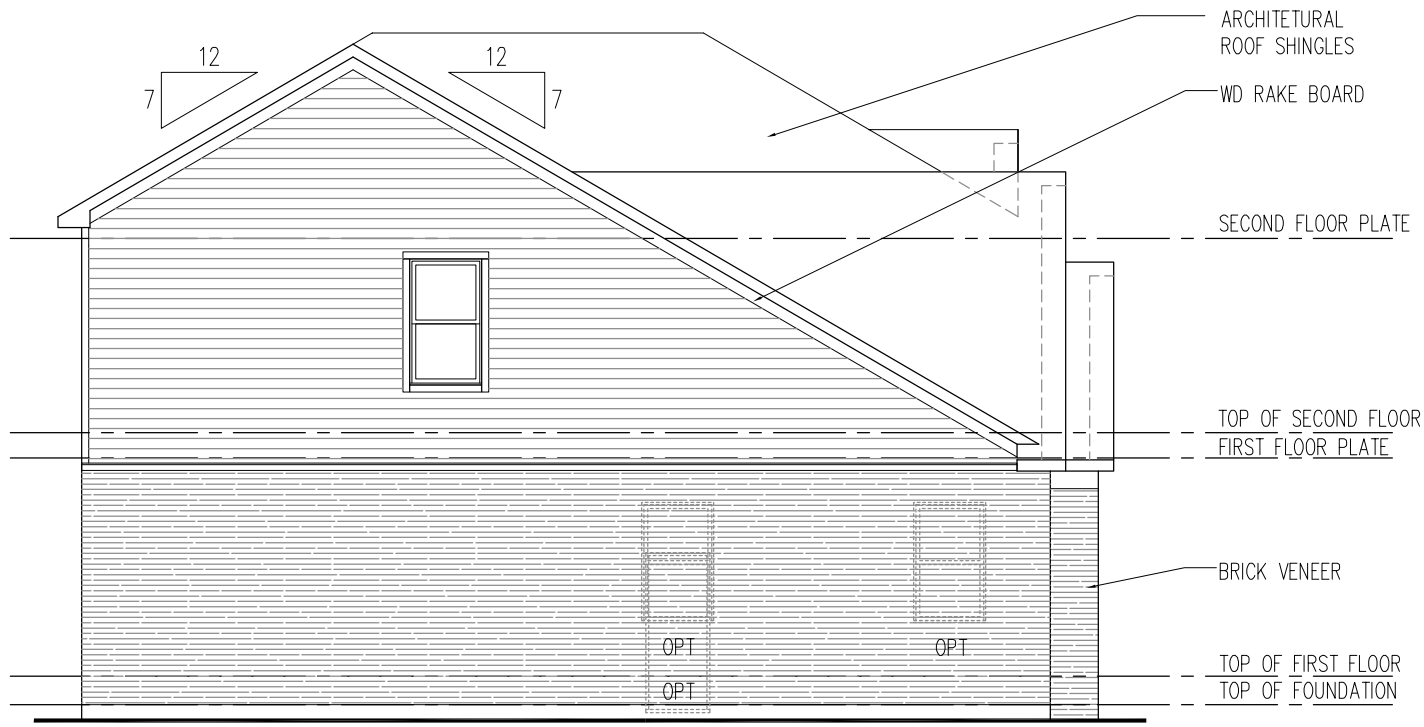
Table of Contents

- 1 Title Page
- 2 Floor Plan Data Table
- 3 Greenfield Base Elevation & Materials
- 4 Greenfield Elevation Options
- 5 Greenfield Floorplan
- 6 Hilltop Base Elevation & Materials
- 7 Hilltop Elevation Options
- 8 Hilltop Floorplan
- 9 Riverton Base Elevation & Materials
- 10 Riverton Elevation Options
- 11 Riverton Floorplan
- 12 Westchester Base Elevation & Materials
- 13 Westchester Elevation Options
- 14 Westchester Floorplan
- 15 Willwood Base Elevation & Materials
- 16 Willwood Elevation Options
- 17 Willwood Floorplan
- 18 Woodside Base Elevation & Materials
- 19 Woodside Elevation Options
- 20 Woodside Floorplan
- 21 Castleton Base Elevation & Materials
- 22 Castleton Elevation Options
- 23 Castleton Floorplan
- 24 Renderings
- 25 Renderings
- 26 Optional Third Car Garage Elevations
- 27 Garage Percentage Matrix
- 28 Note on Architecture

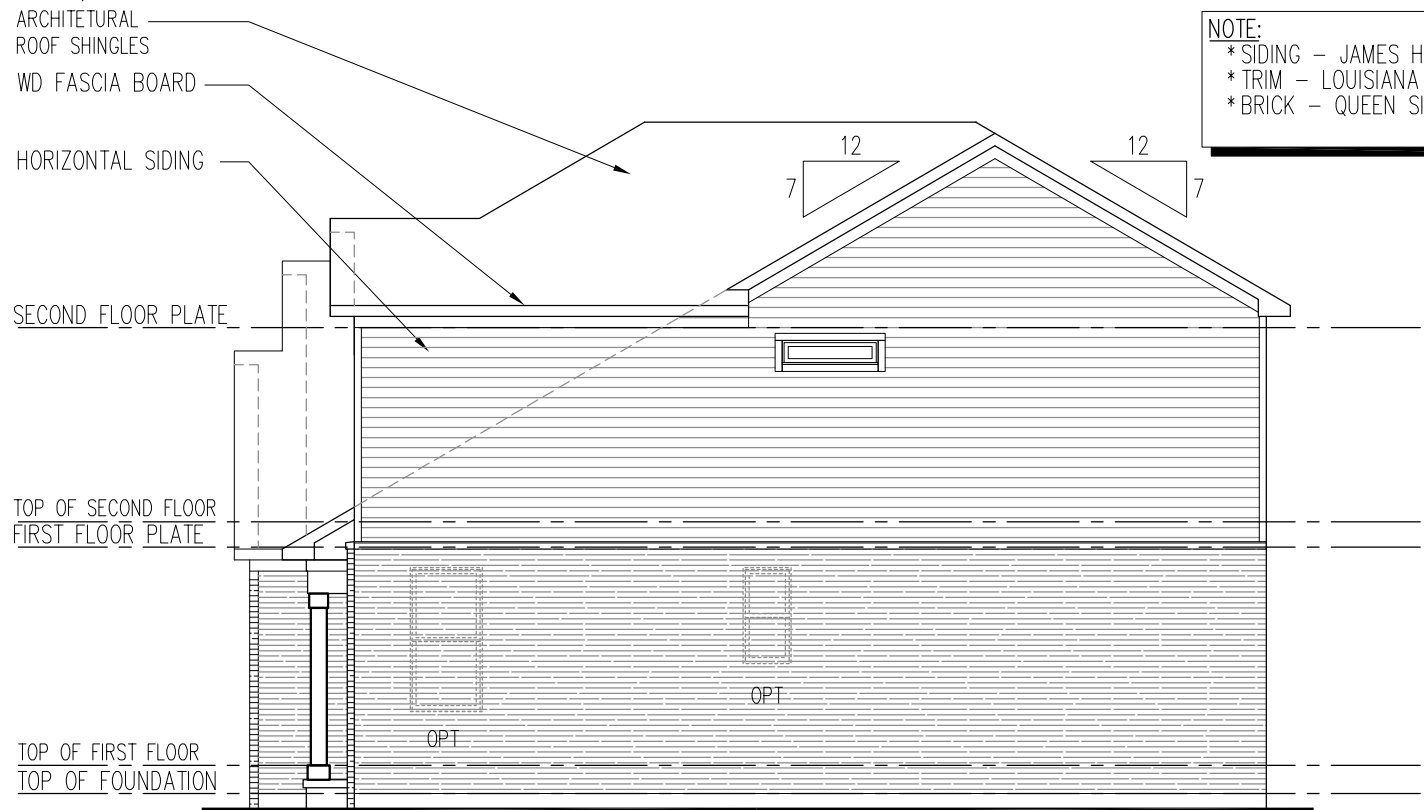


**Pulte - Estates at Ravinia Meadow - Offered Floorplans**

<b>Plan</b>	<b>Starting SQFT</b>	<b>Starting Bedrooms</b>	<b>Starting FAR *</b>	<b>Elevations Offered</b>
Greenfield	2621	4	26%	4
Hilltop	2899	4	29%	4
Riverton	3126	4	31%	5
Westchester	3300	4	33%	5
Willwood	3169	4	32%	5
Woodside	3277	4	33%	4
Castleton	3391	4	34%	3
			* FAR calculated using smallest lot (10,000 SF)	



LEFT ELEVATION



RIGHT ELEVATION

NOTE:  
 \*SIDING - JAMES HARDIE (ENGINEERED)  
 \*TRIM - LOUISIANA PACIFIC (ENGINEERED)  
 \*BRICK - QUEEN SIZE

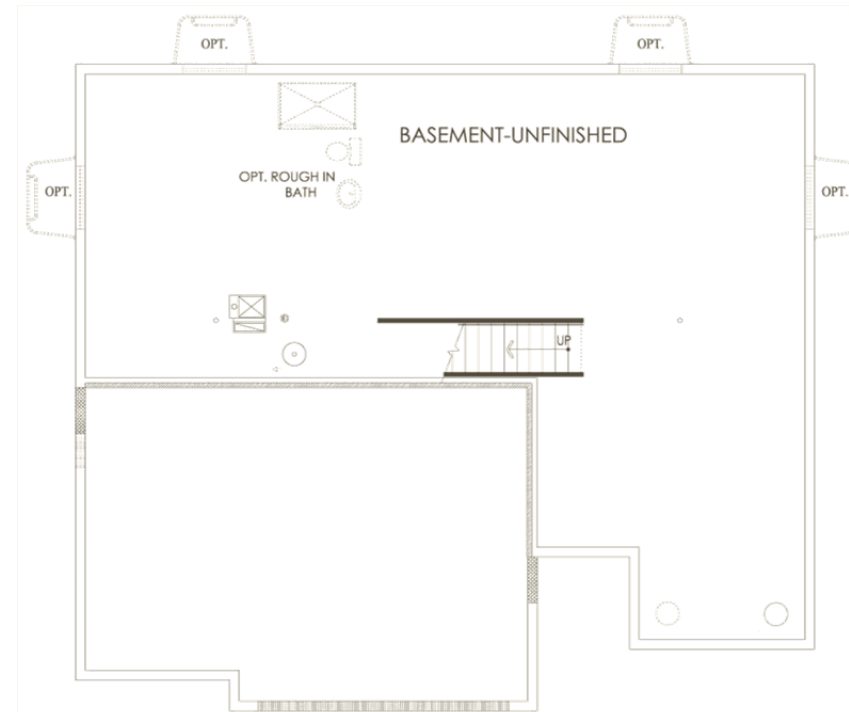
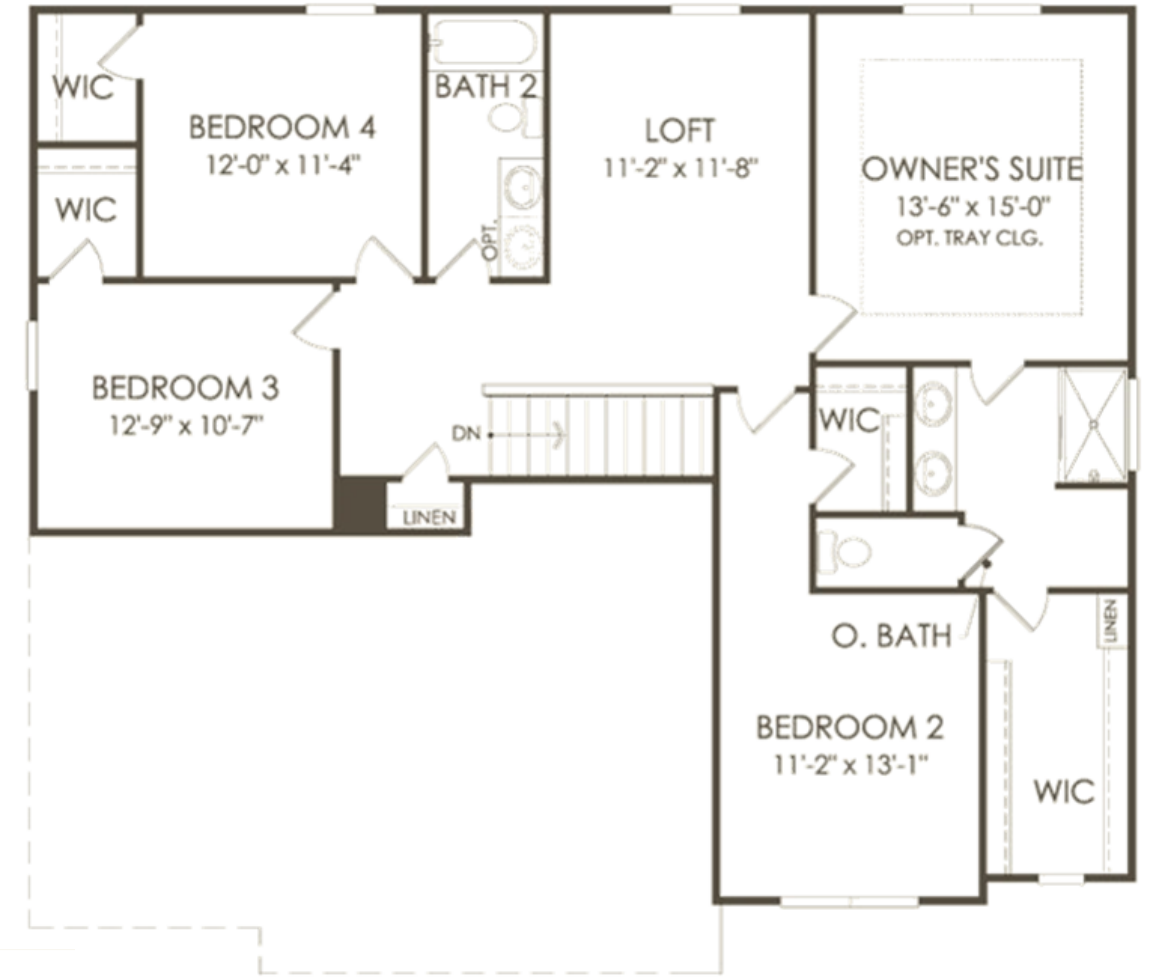
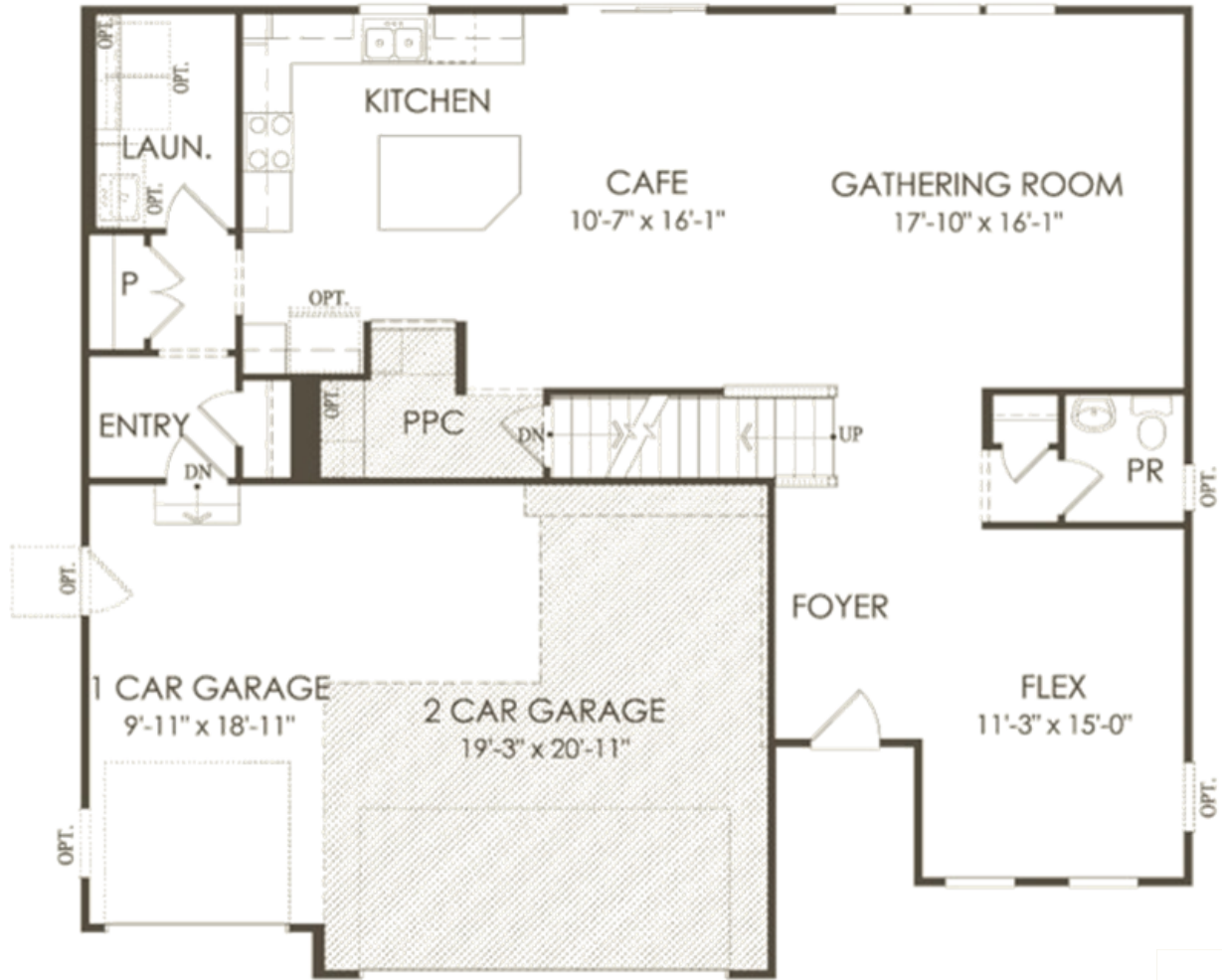


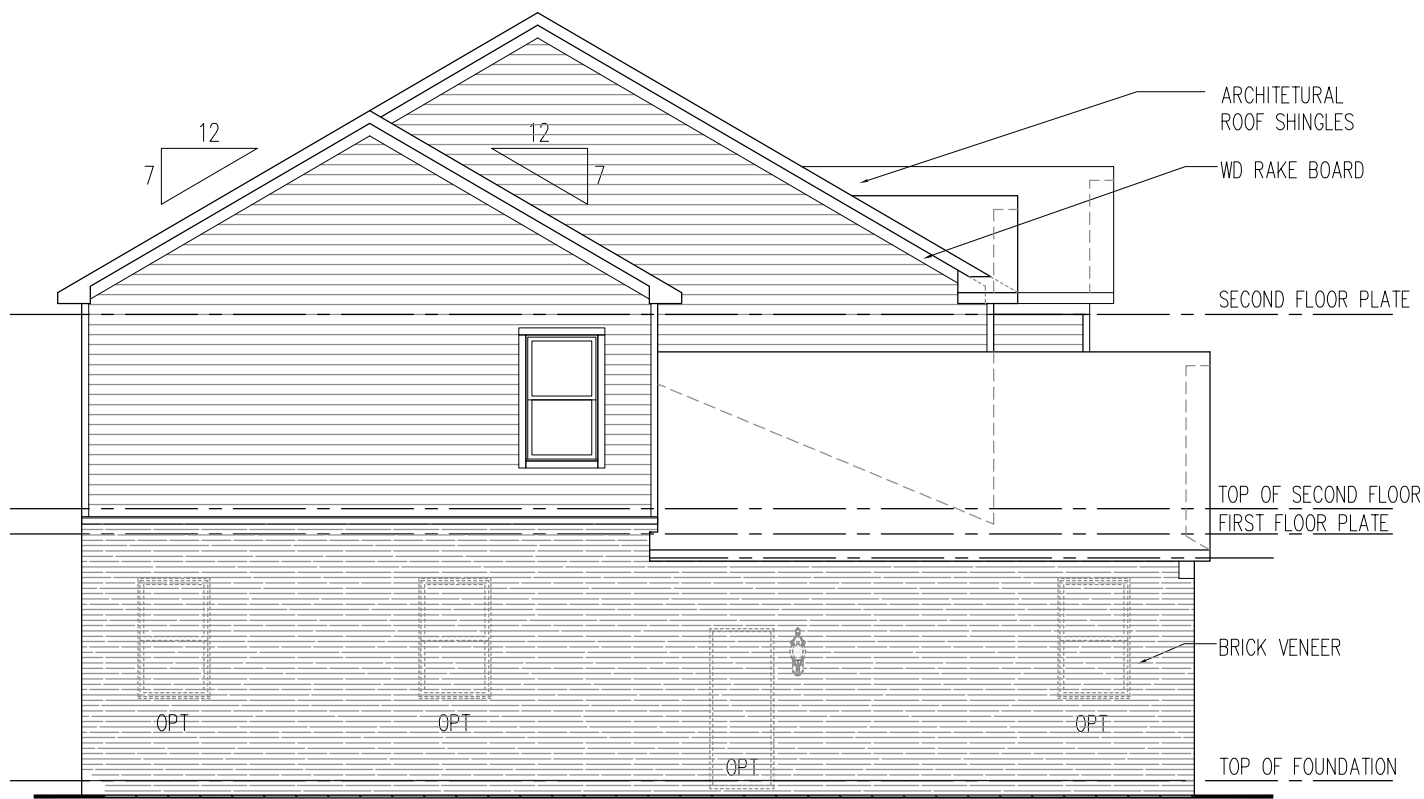
FRONT ELEVATION



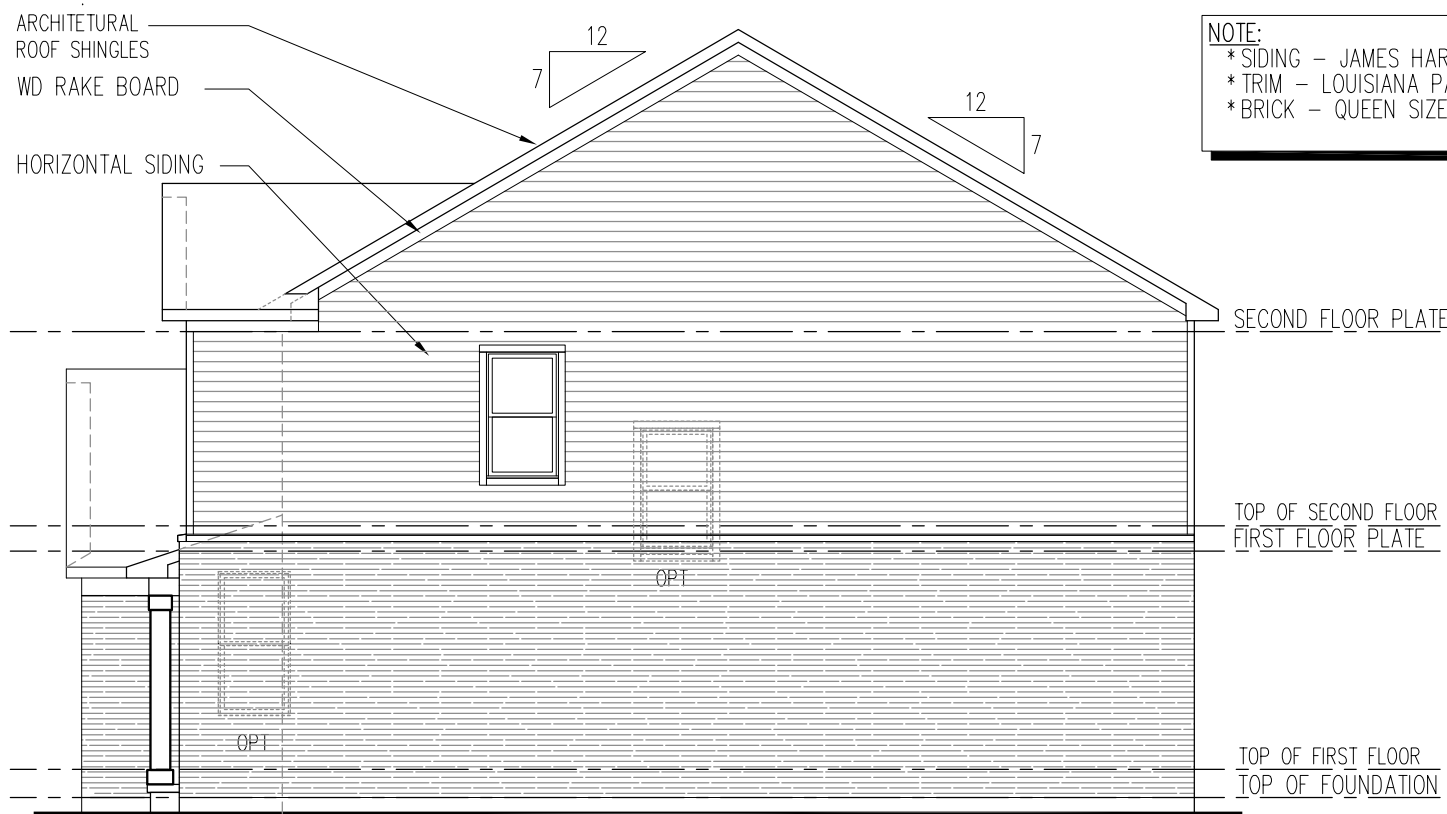
REAR ELEVATION







LEFT ELEVATION



RIGHT ELEVATION

**NOTE:**  
 \* SIDING - JAMES HARDIE (ENGINEERED)  
 \* TRIM - LOUISIANA PACIFIC (ENGINEERED)  
 \* BRICK - QUEEN SIZE

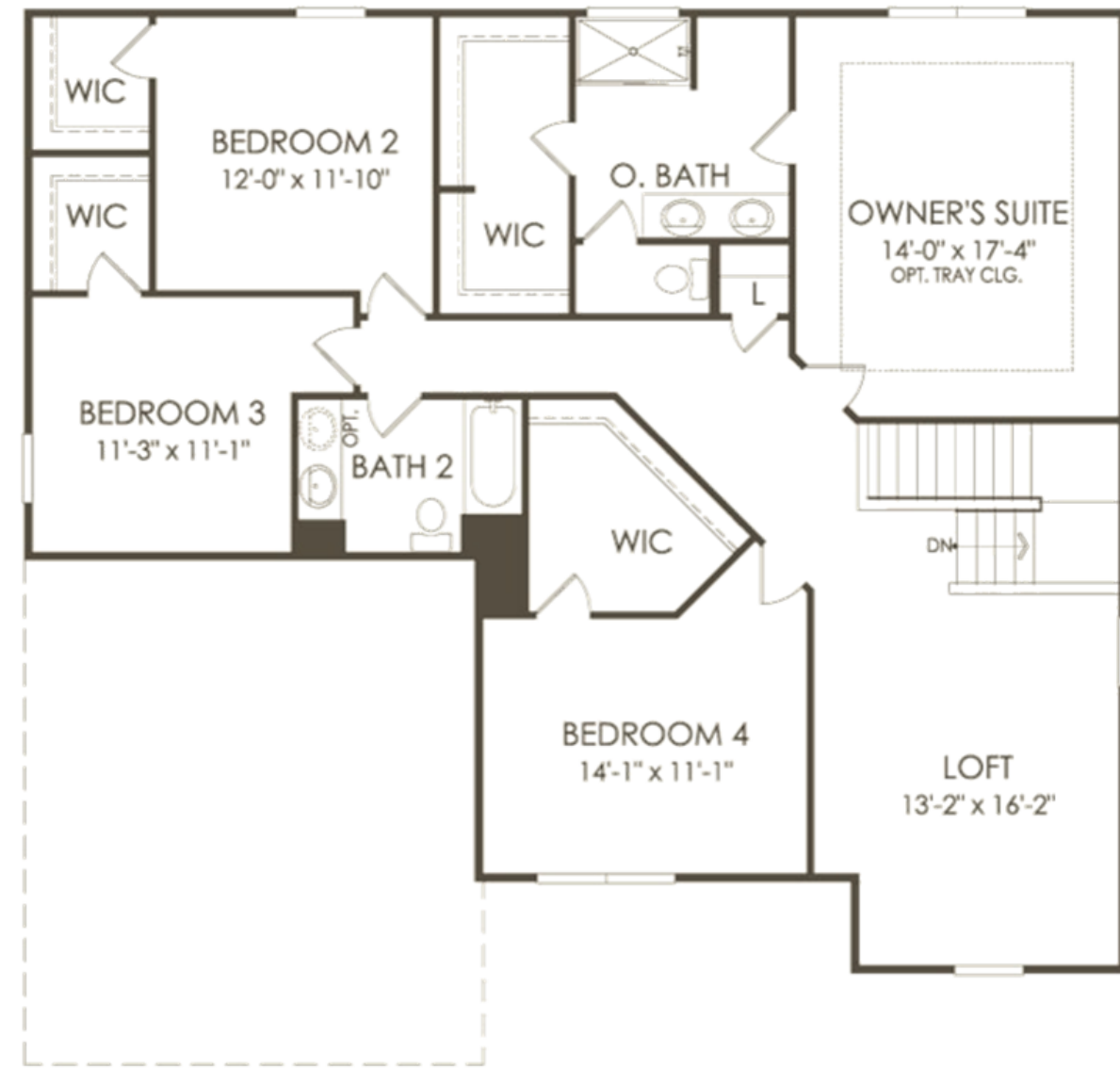
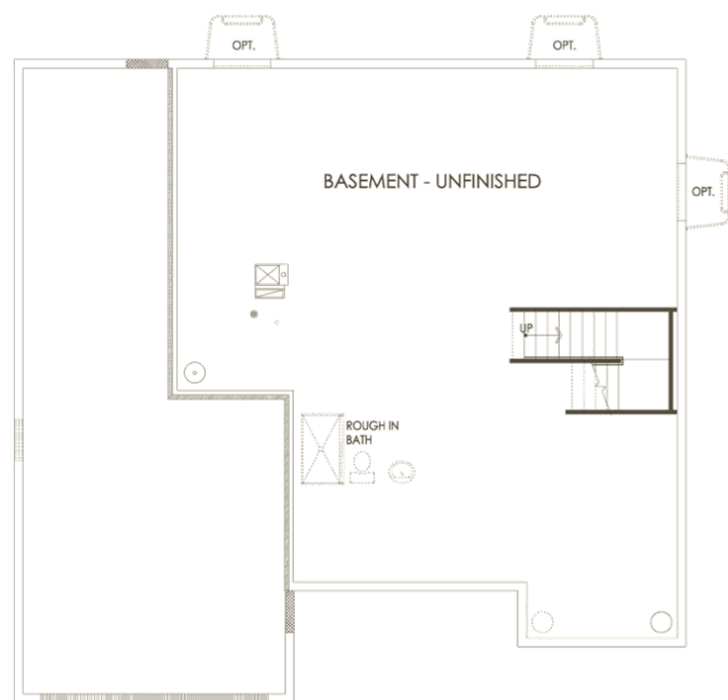
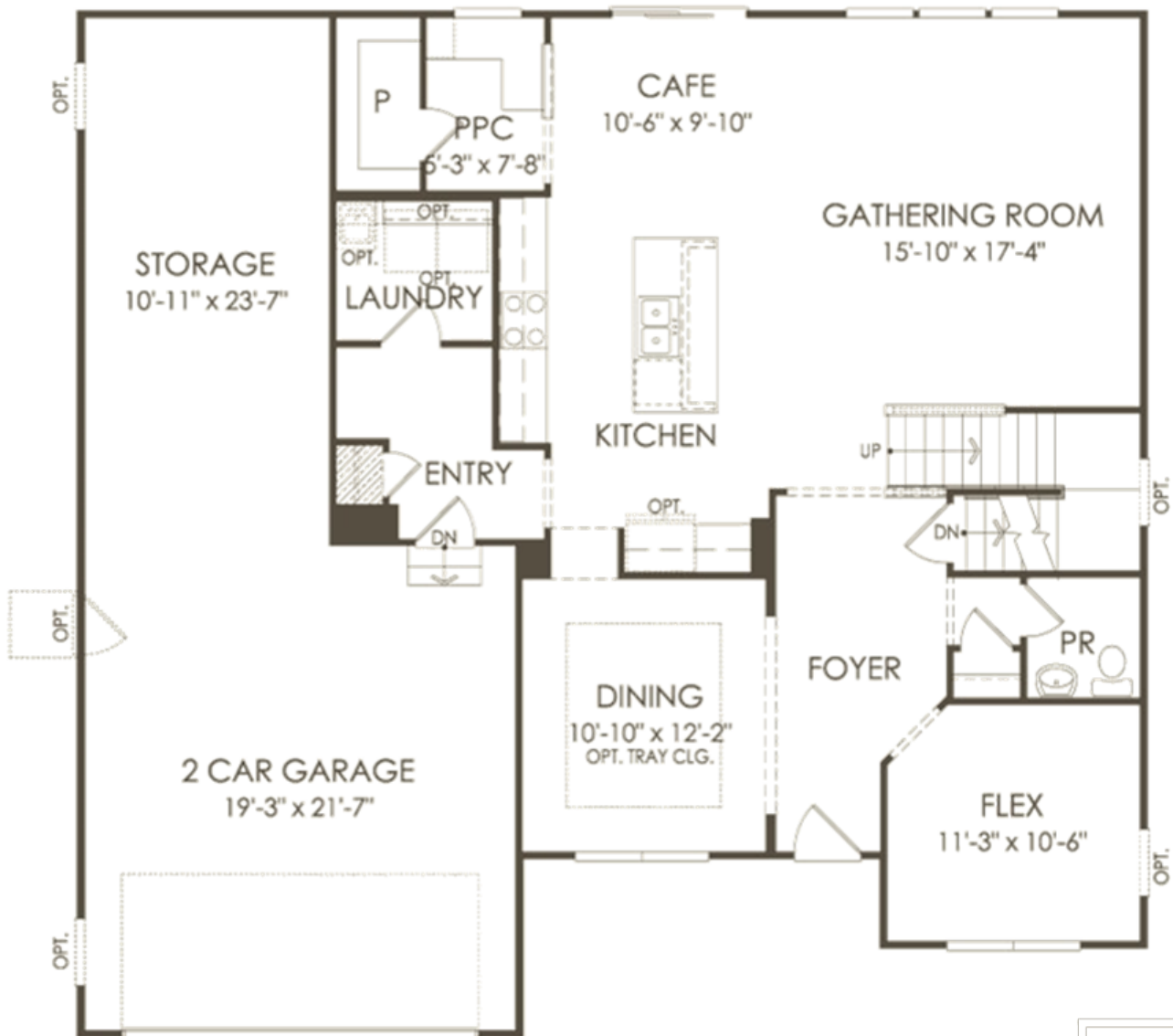


FRONT ELEVATION



REAR ELEVATION





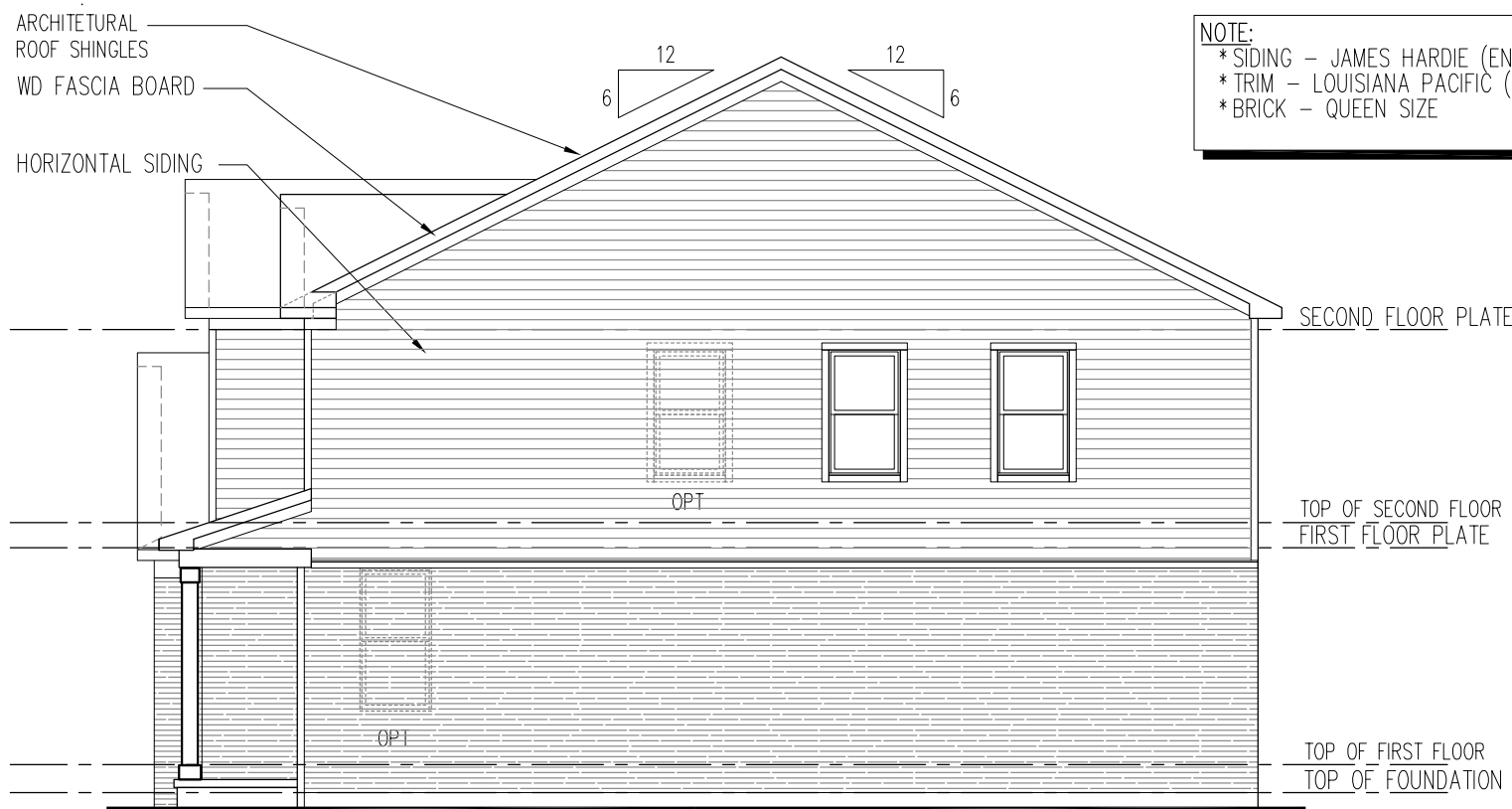




LEFT ELEVATION



FRONT ELEVATION



RIGHT ELEVATION

NOTE:  
 \* SIDING - JAMES HARDIE (ENGINEERED)  
 \* TRIM - LOUISIANA PACIFIC (ENGINEERED)  
 \* BRICK - QUEEN SIZE



REAR ELEVATION

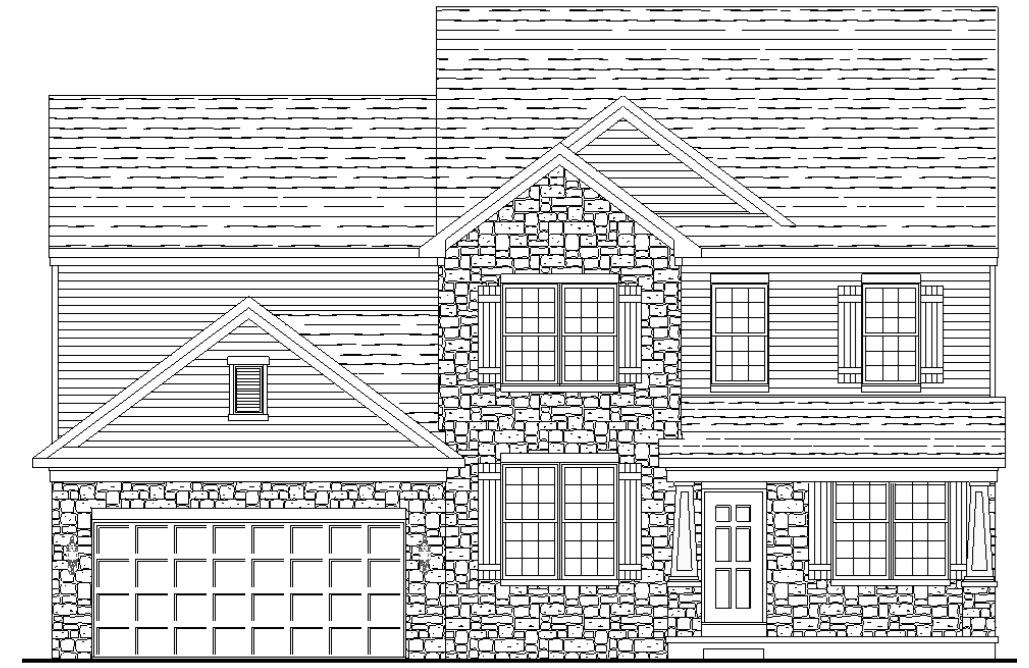


Riverton

Estates at Ravinia Meadow

Orland Park, IL

(c) Copyright 2024 PulteGroup, Inc.

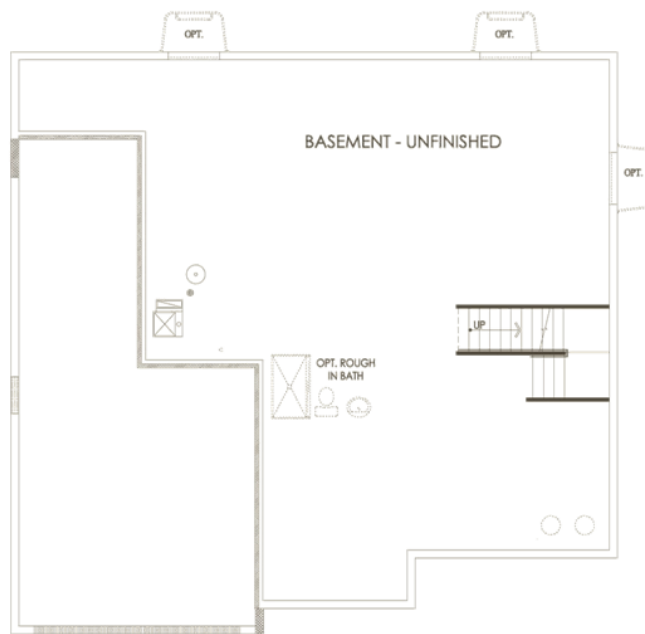
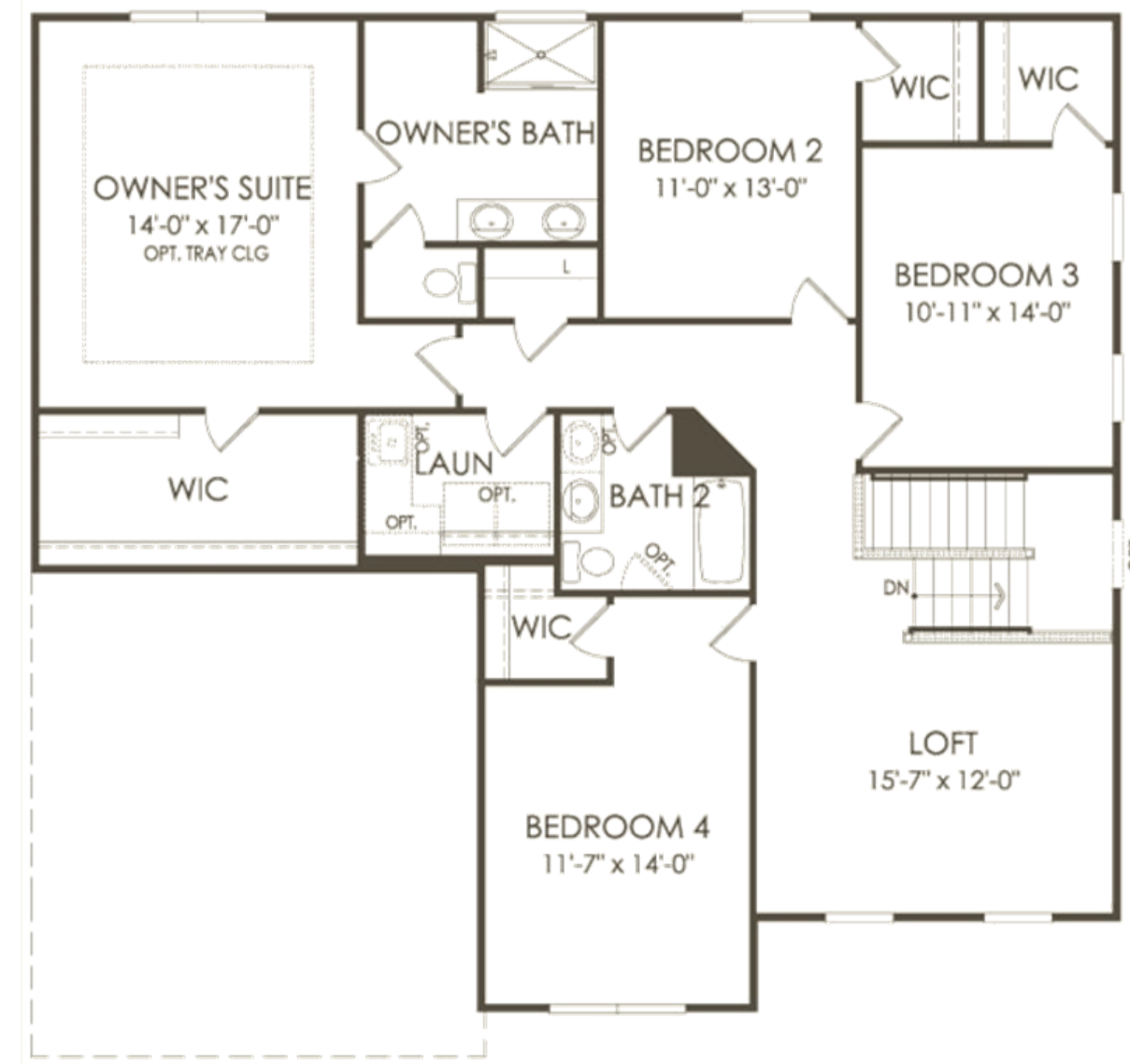
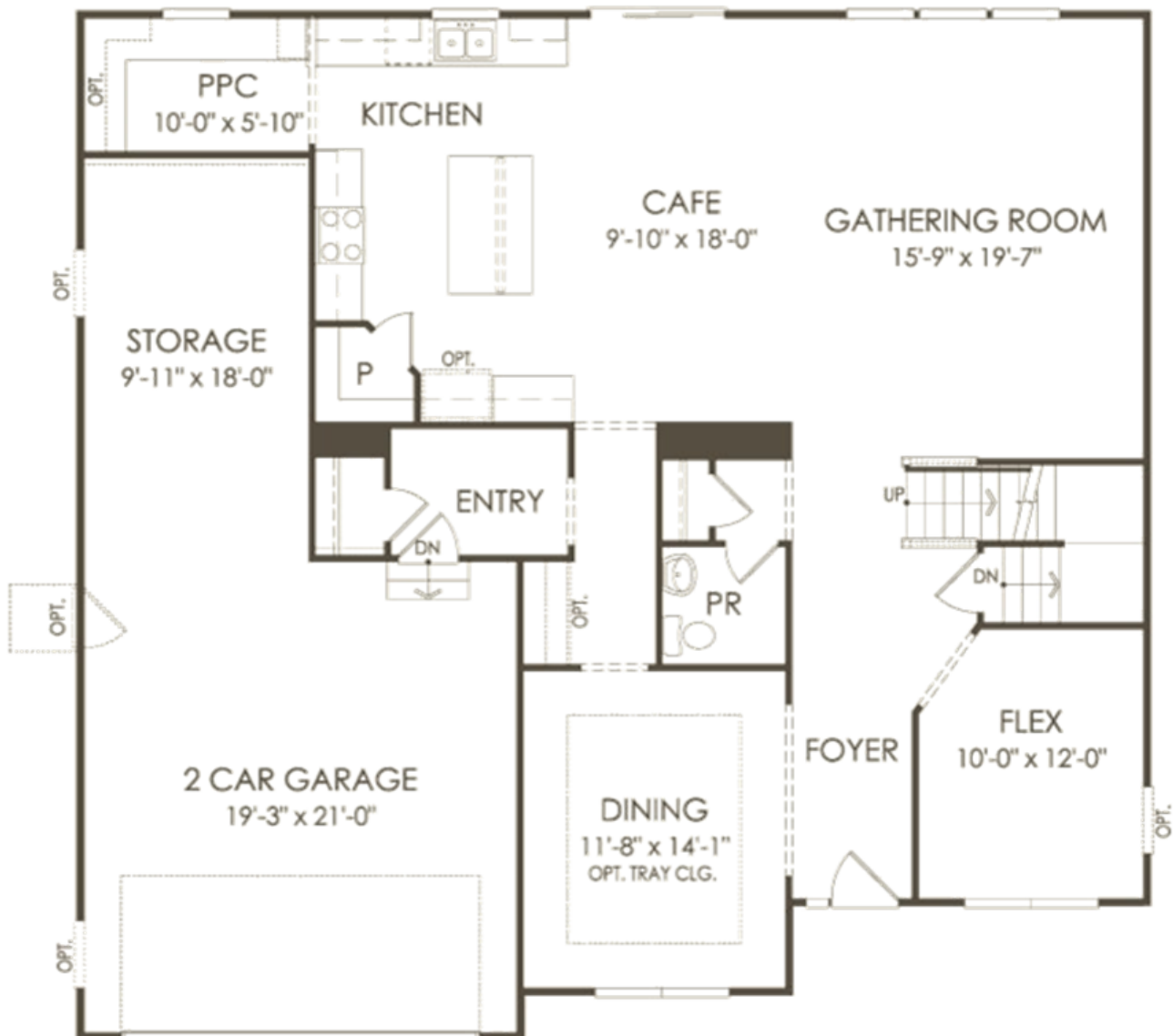


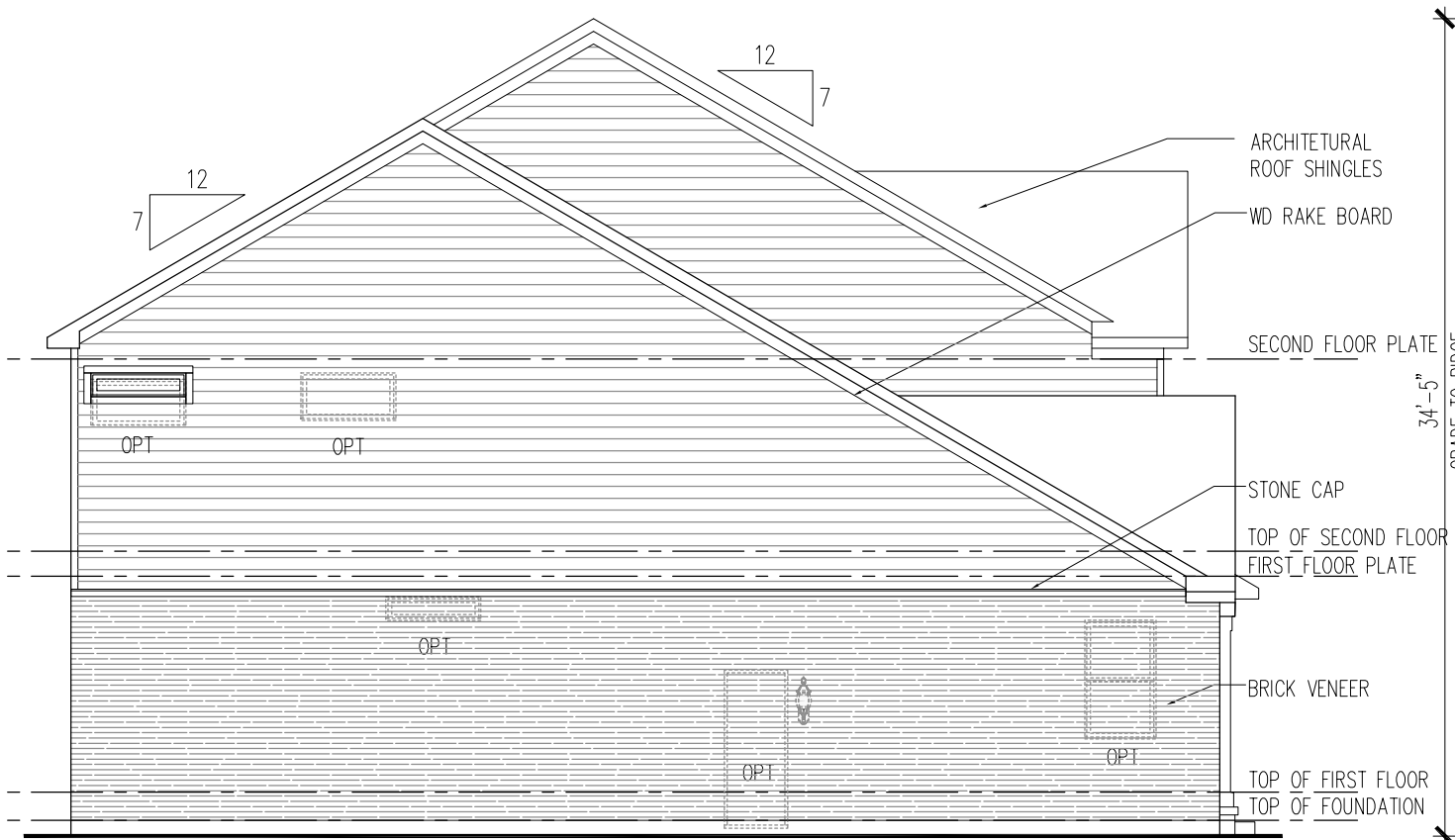
Riverton

Estates at Ravinia Meadow

Orland Park, IL

(c) Copyright 2024 PulteGroup, Inc.

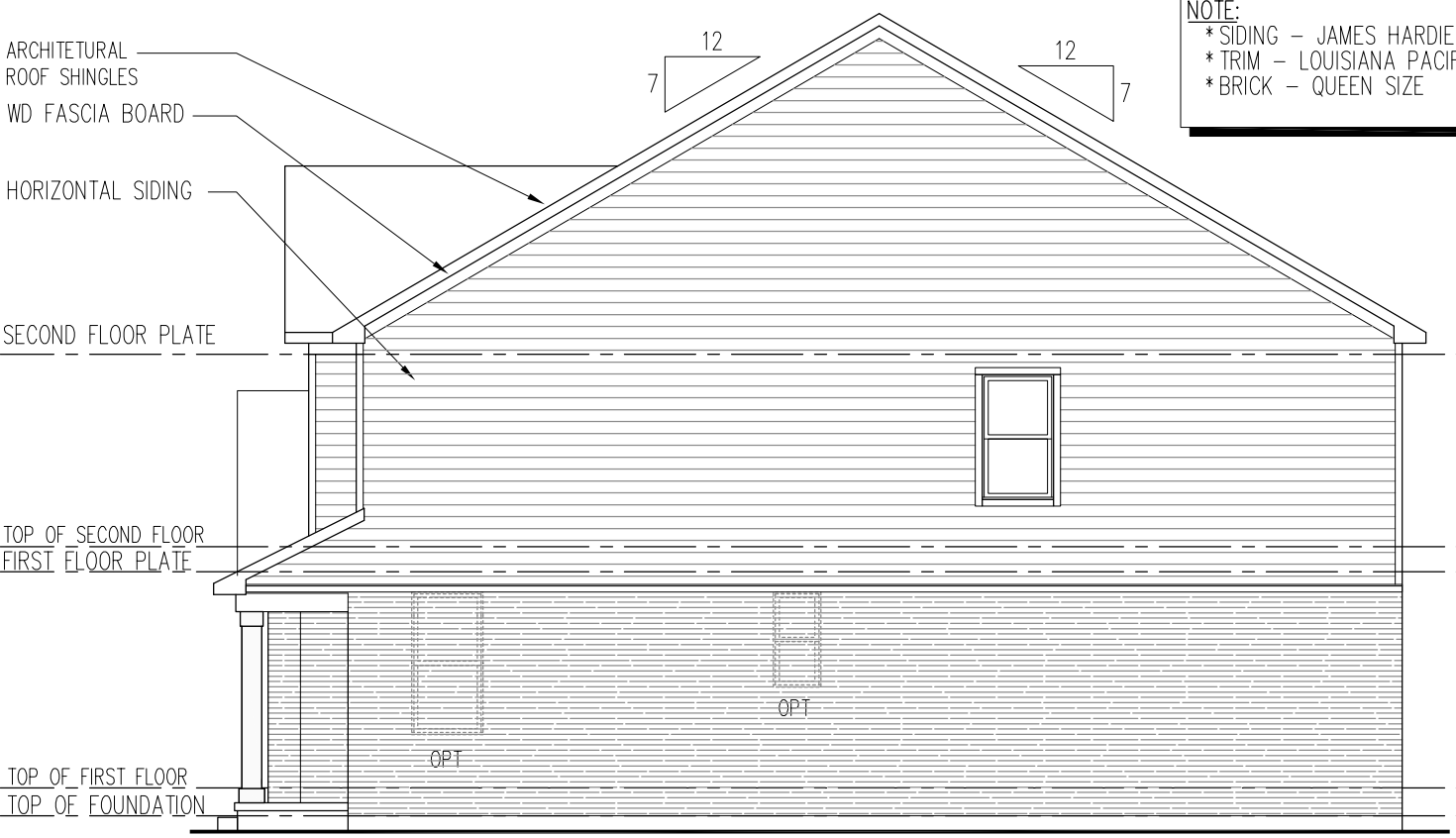




LEFT ELEVATION

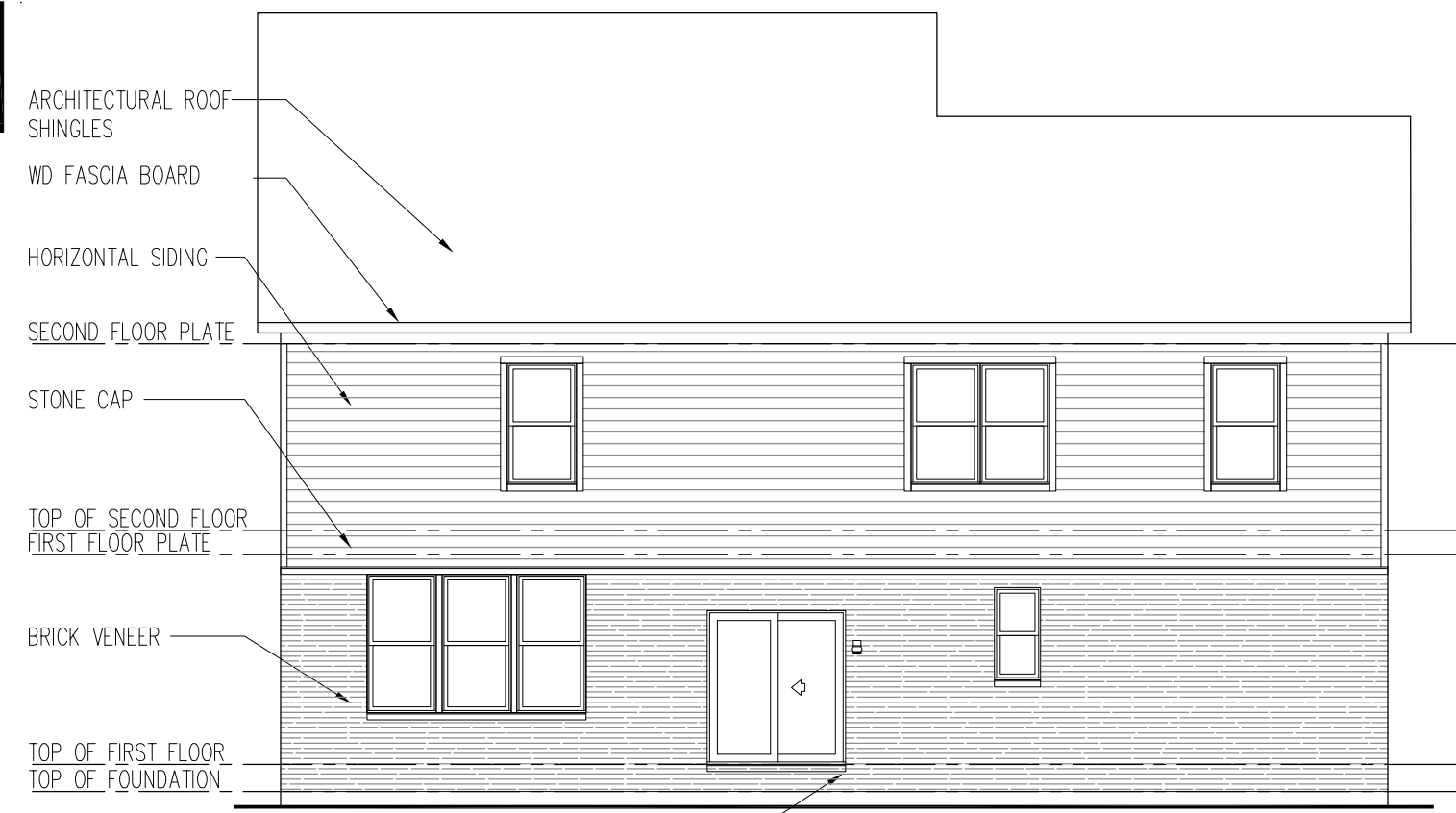


FRONT ELEVATION



RIGHT ELEVATION

**NOTE:**  
 \*SIDING - JAMES HARDIE (ENGINEERED)  
 \*TRIM - LOUISIANA PACIFIC (ENGINEERED)  
 \*BRICK - QUEEN SIZE



REAR ELEVATION

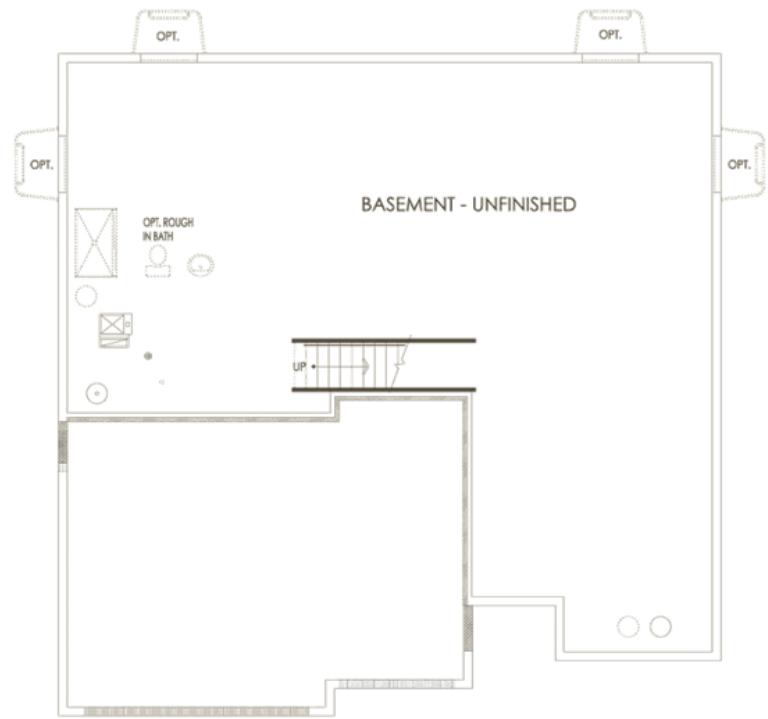
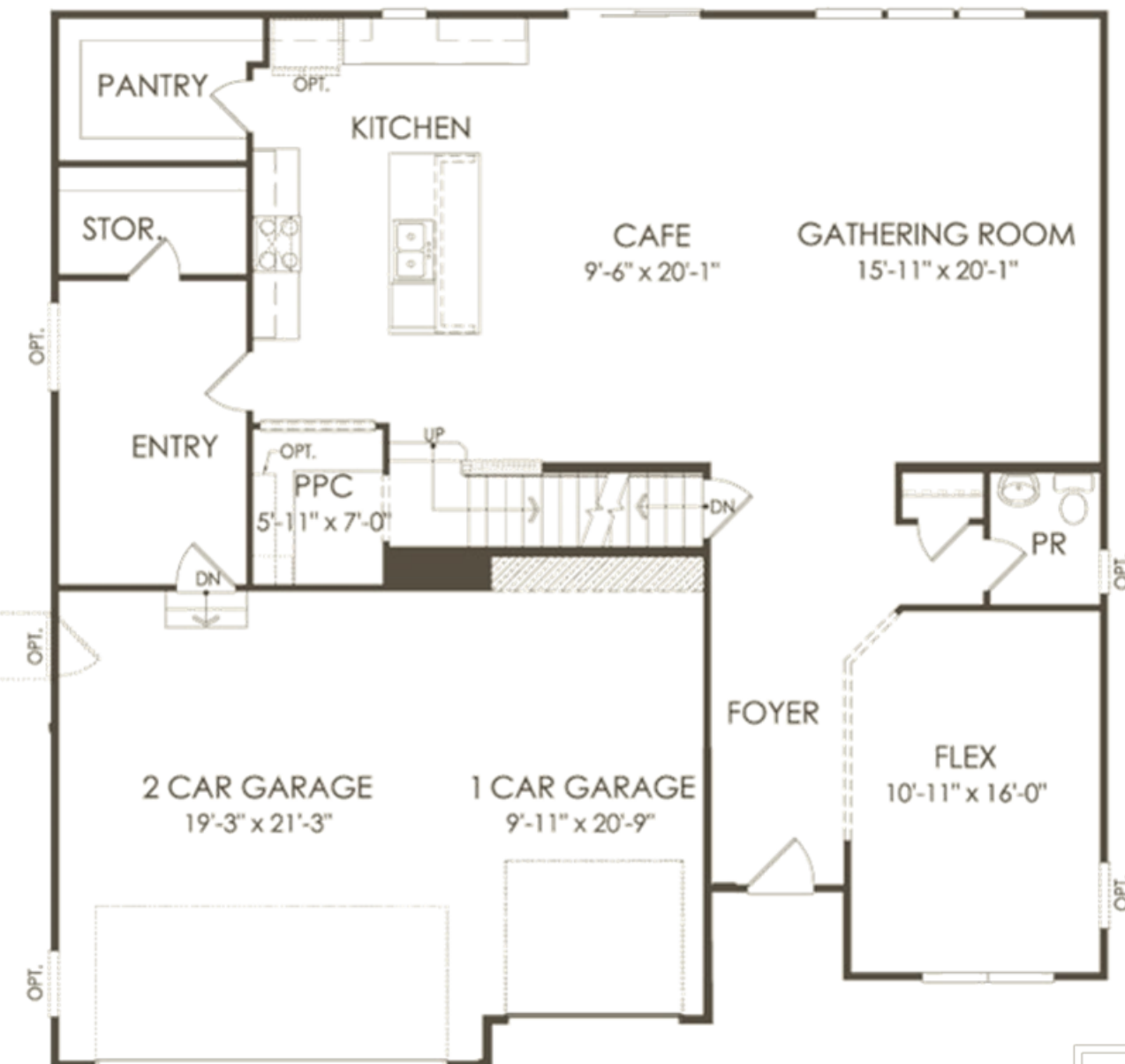


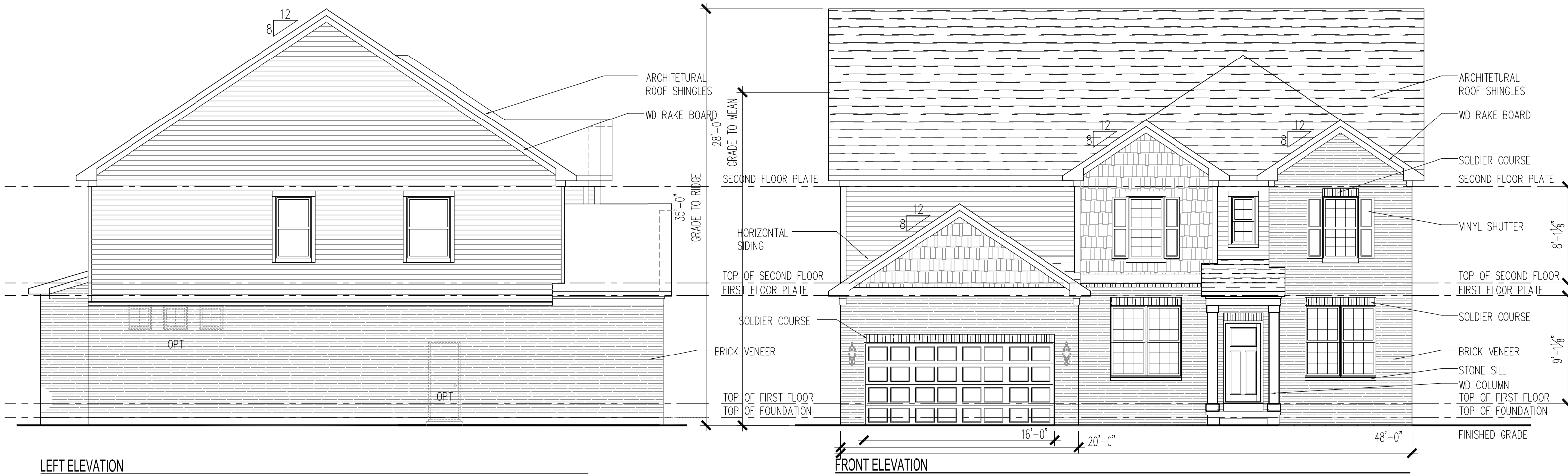
Westchester

Estates at Ravinia Meadow

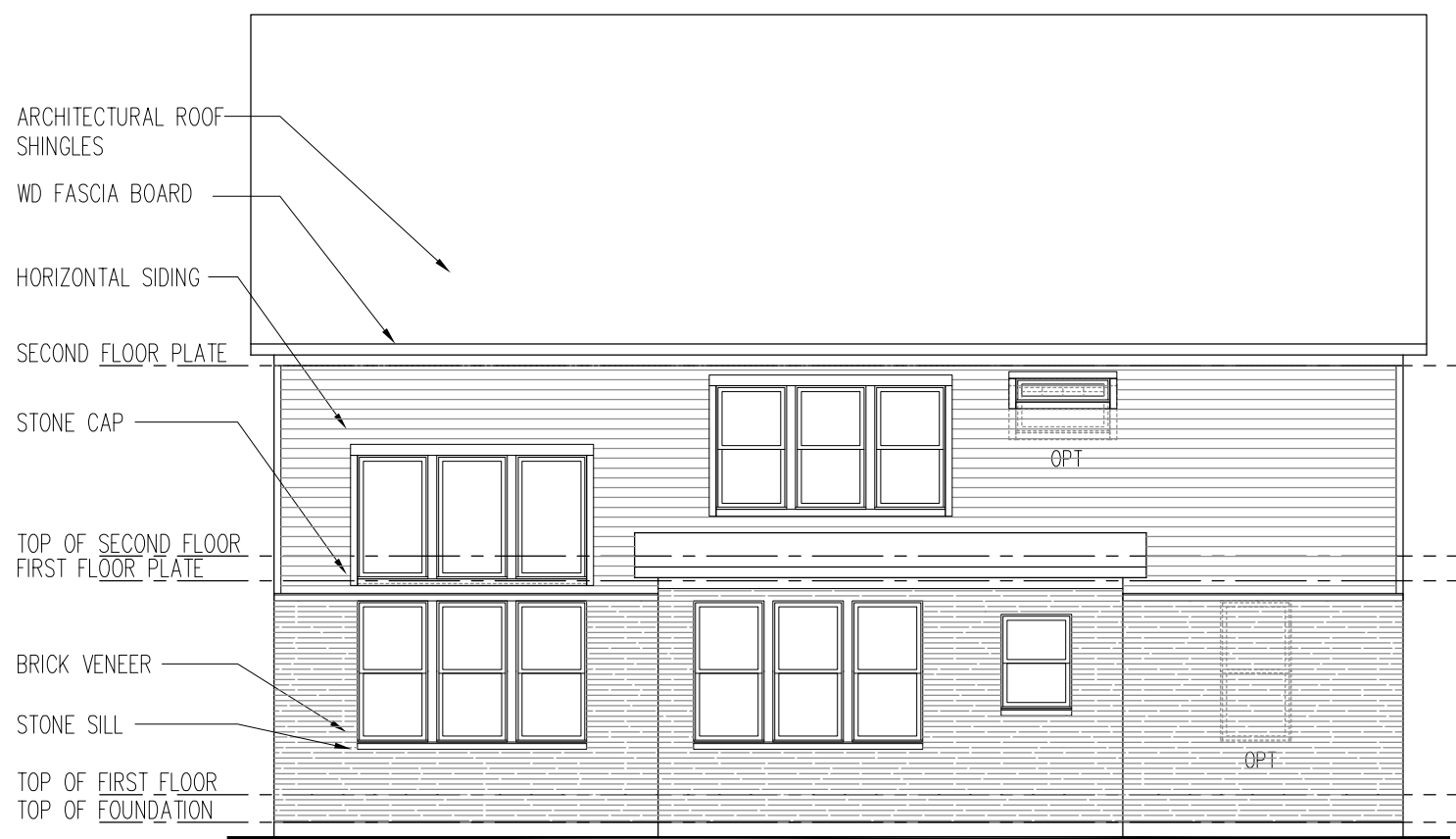
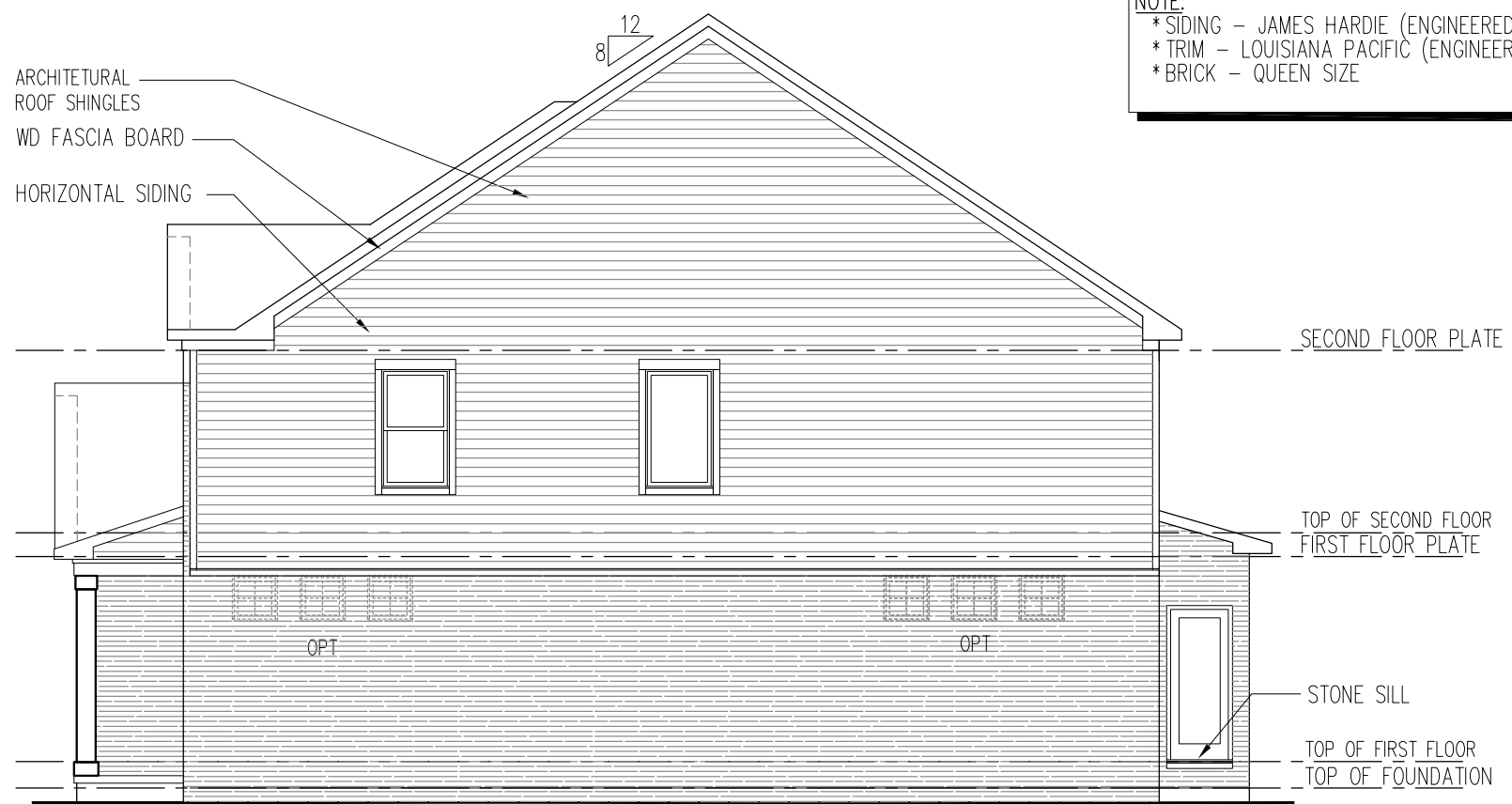
Orland Park, IL

(c) Copyright 2024 PulteGroup, Inc.



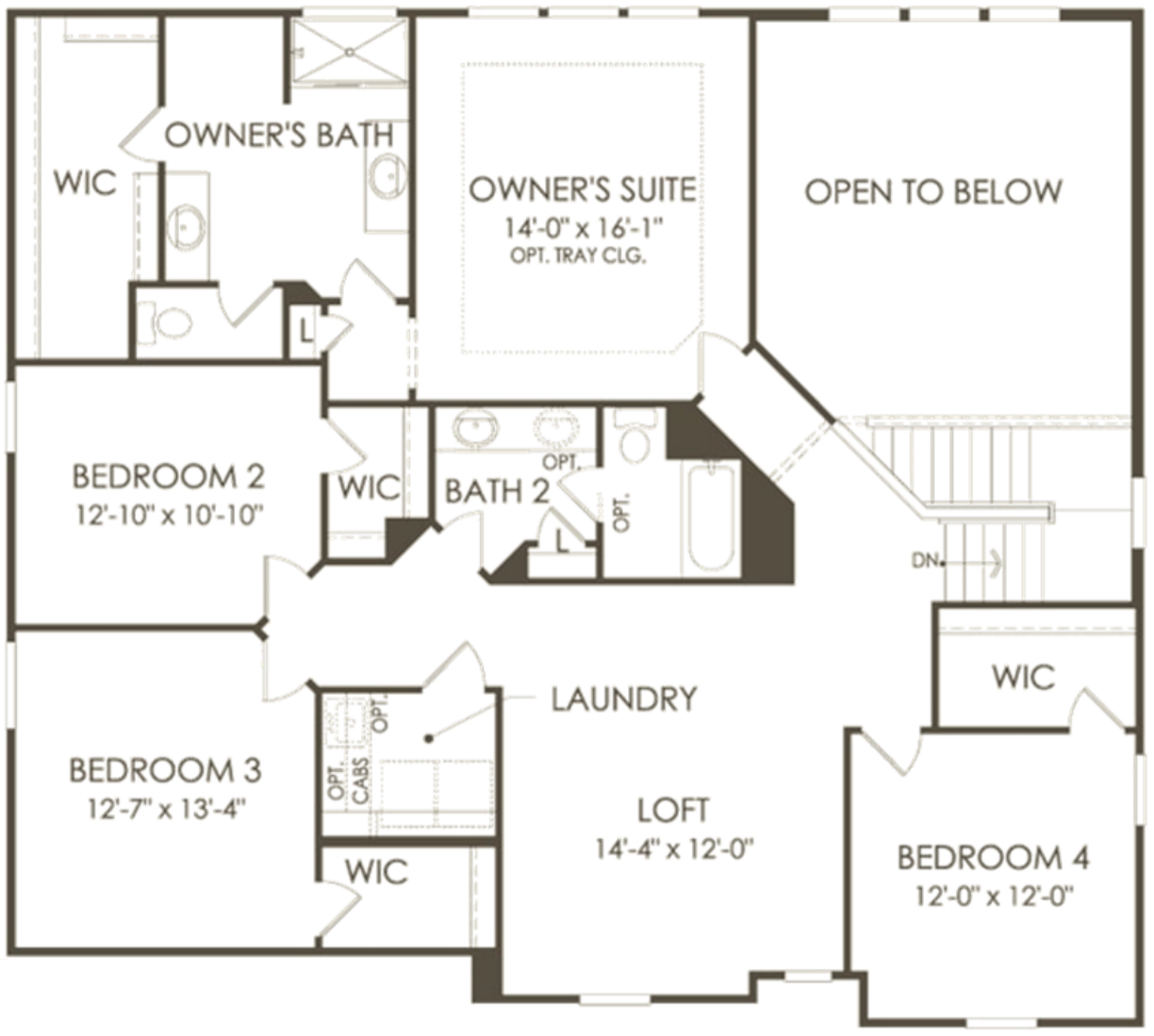
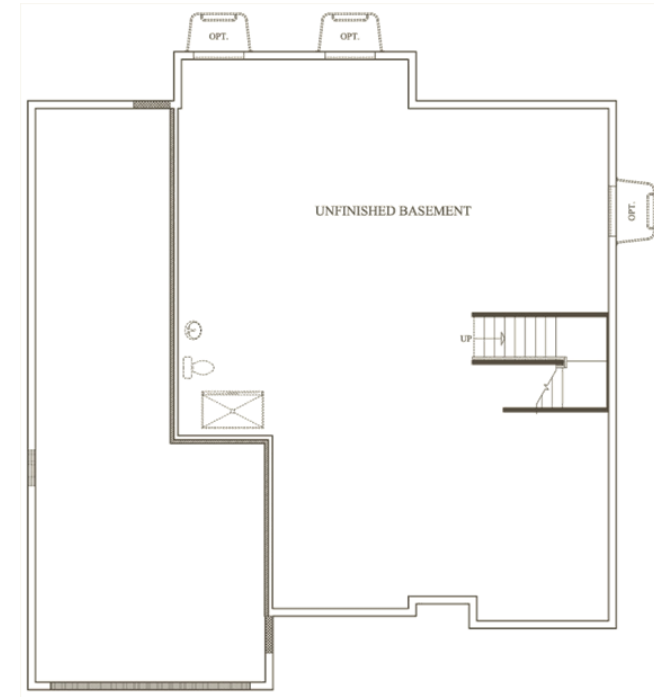
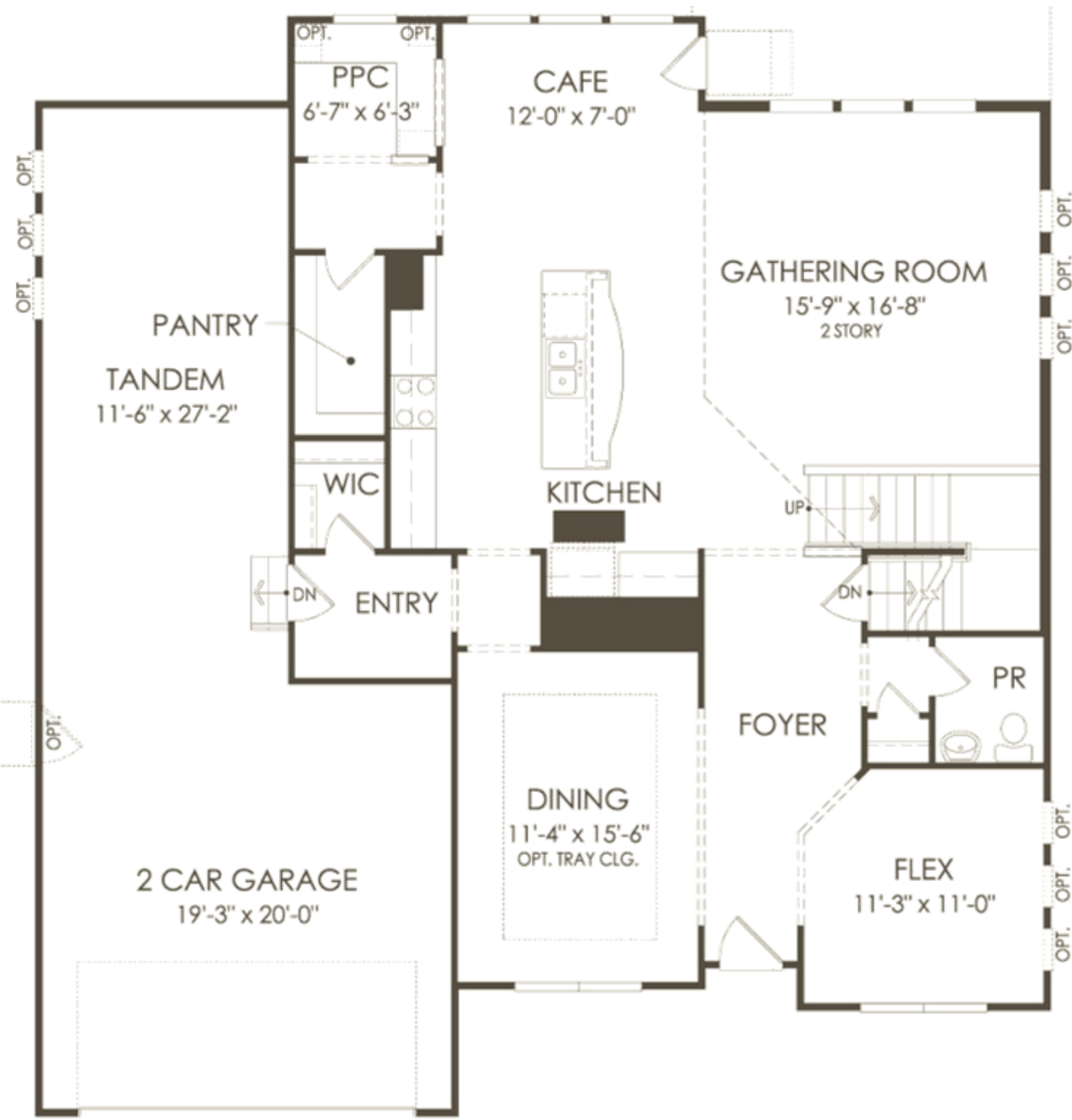


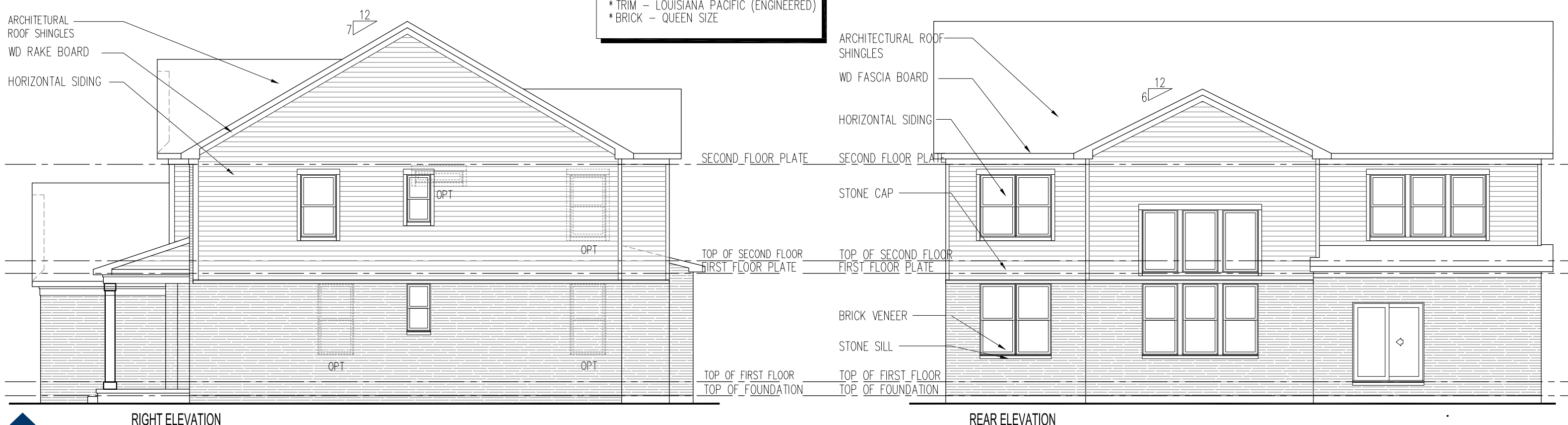
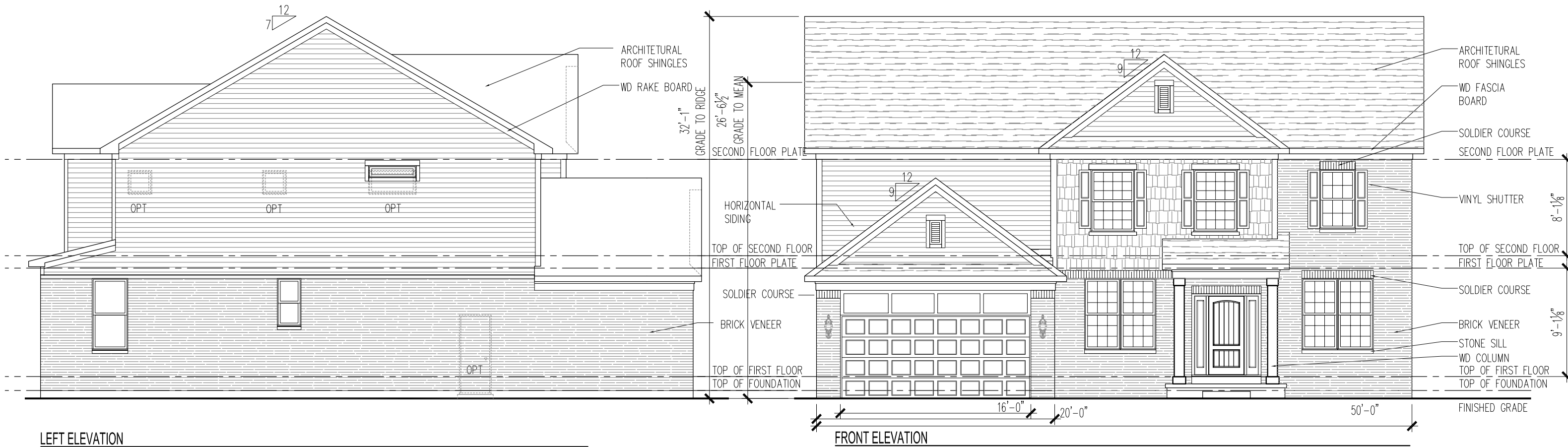
**NOTE:**  
 \*SIDING - JAMES HARDIE (ENGINEERED)  
 \*TRIM - LOUISIANA PACIFIC (ENGINEERED)  
 \*BRICK - QUEEN SIZE











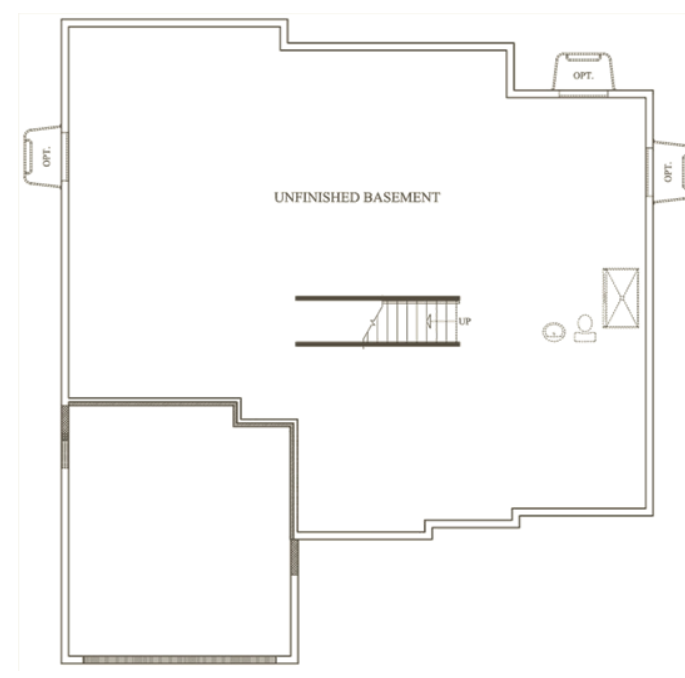
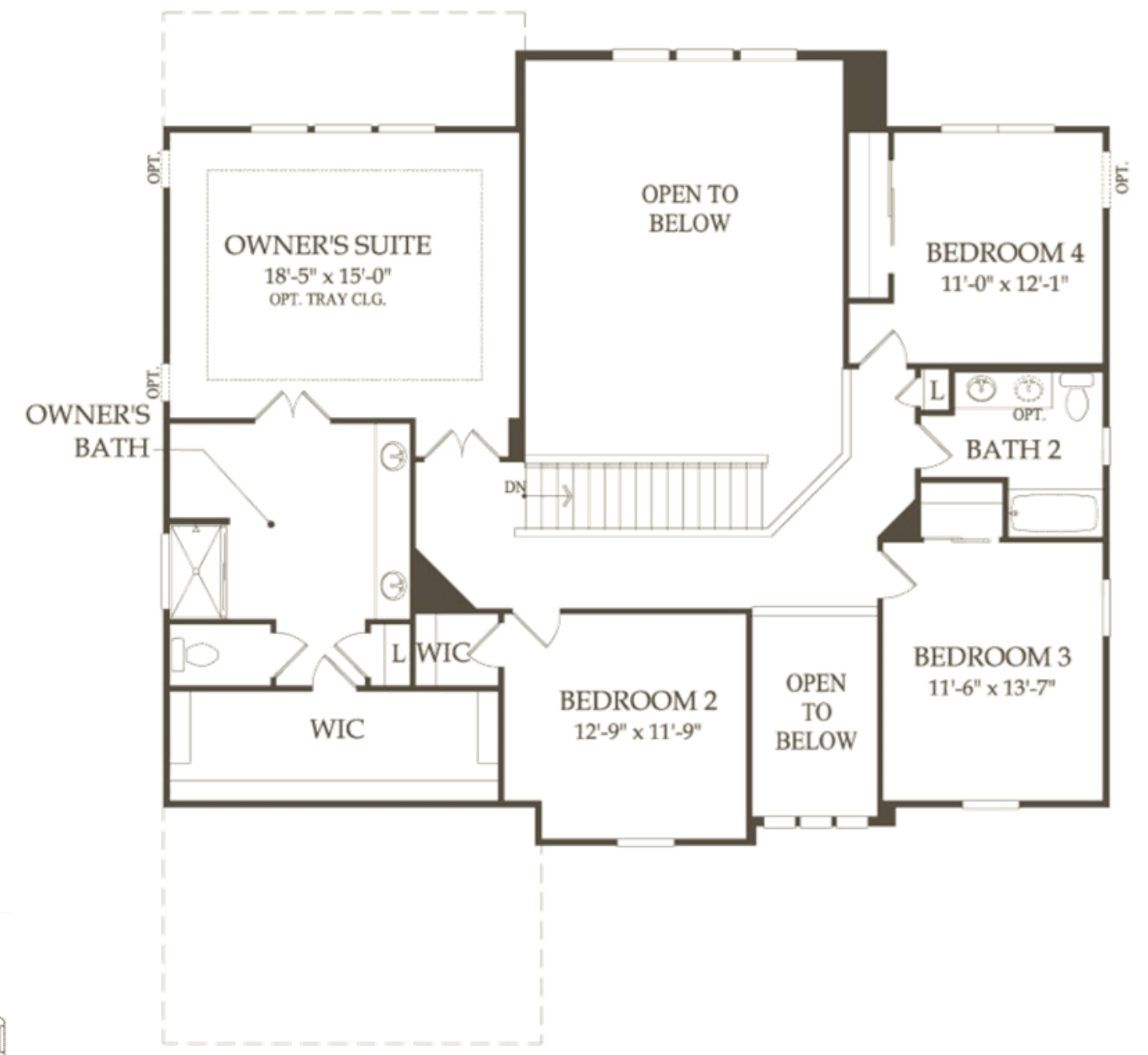
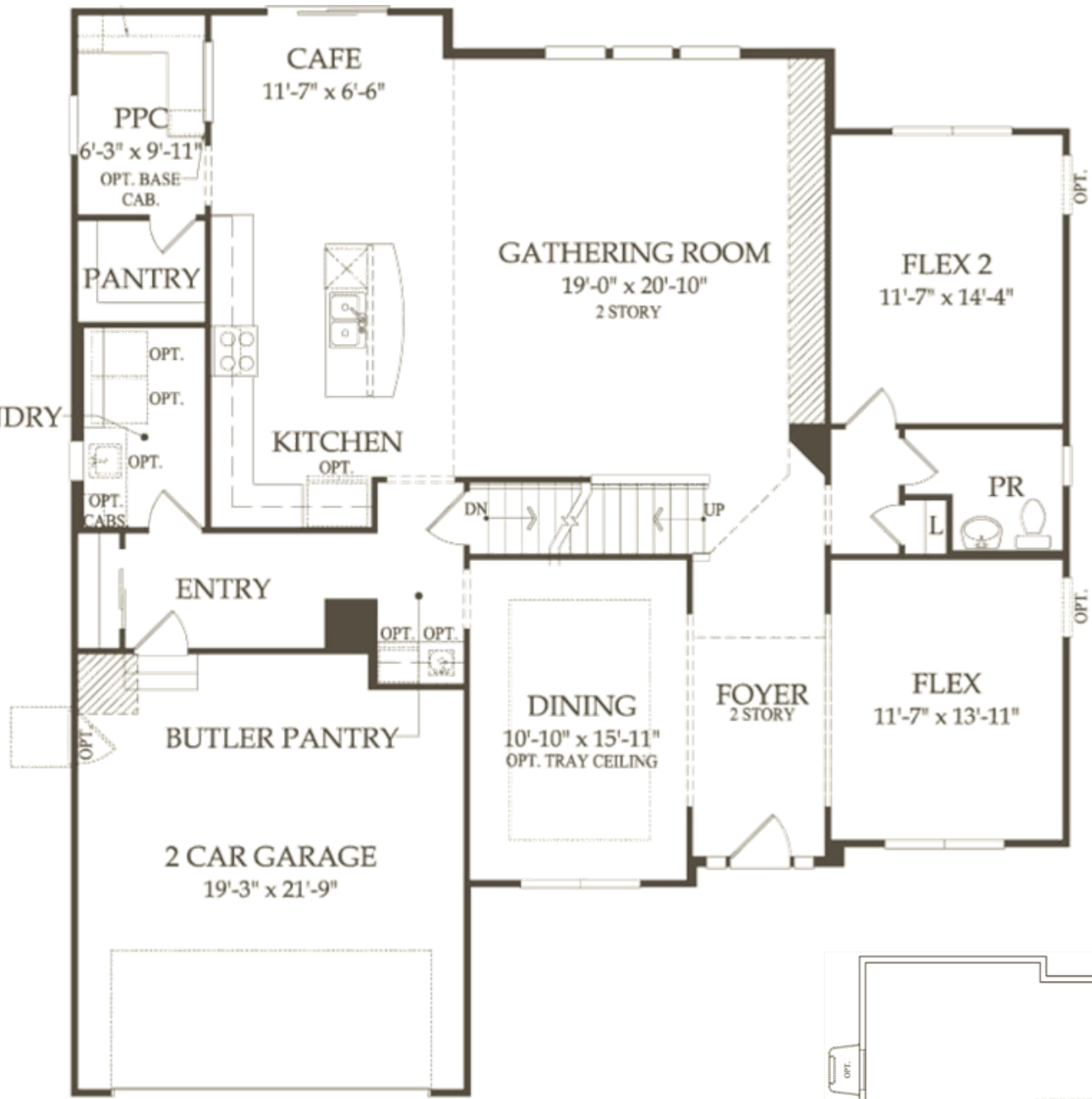
Woodside

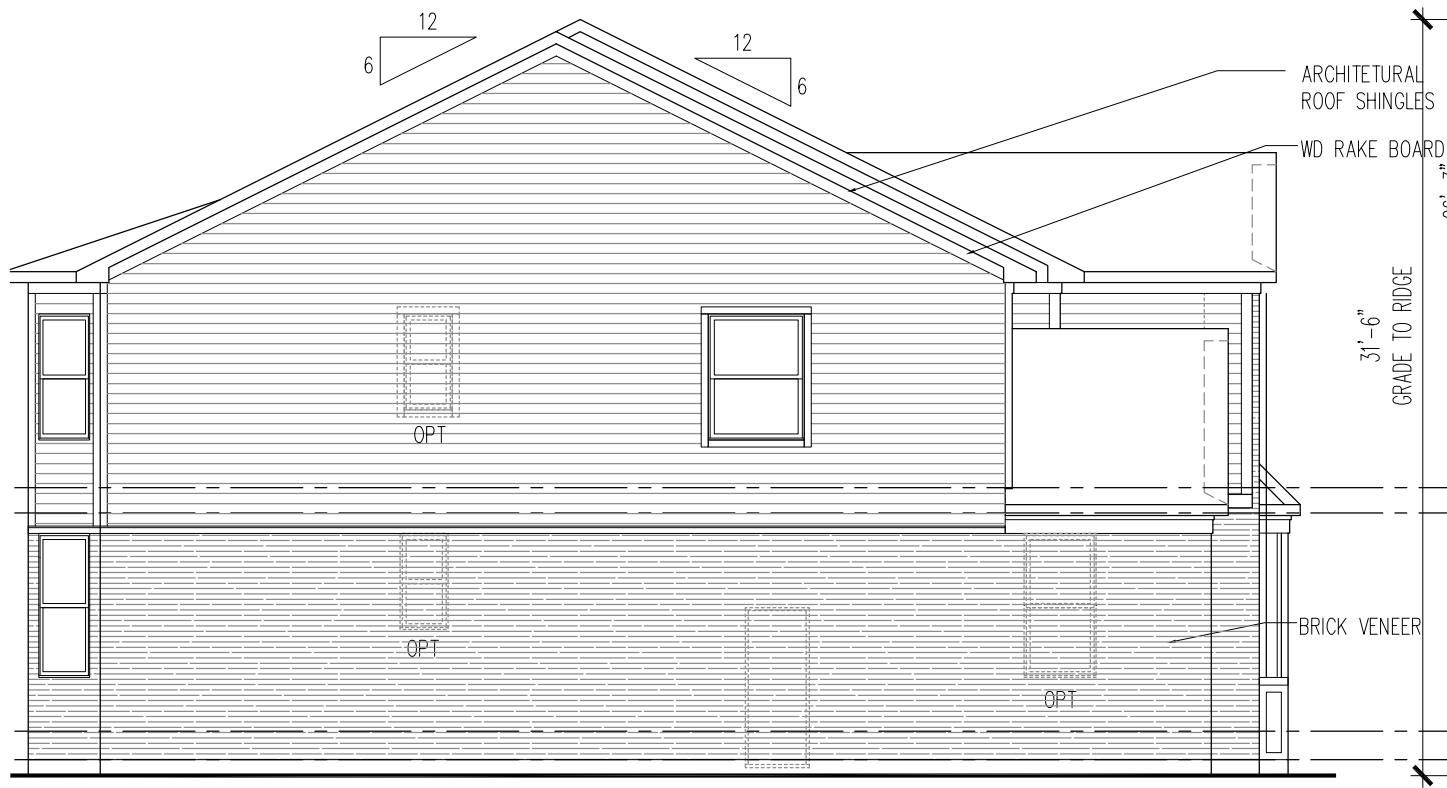
Estates at Ravinia Meadow

Orland Park, IL

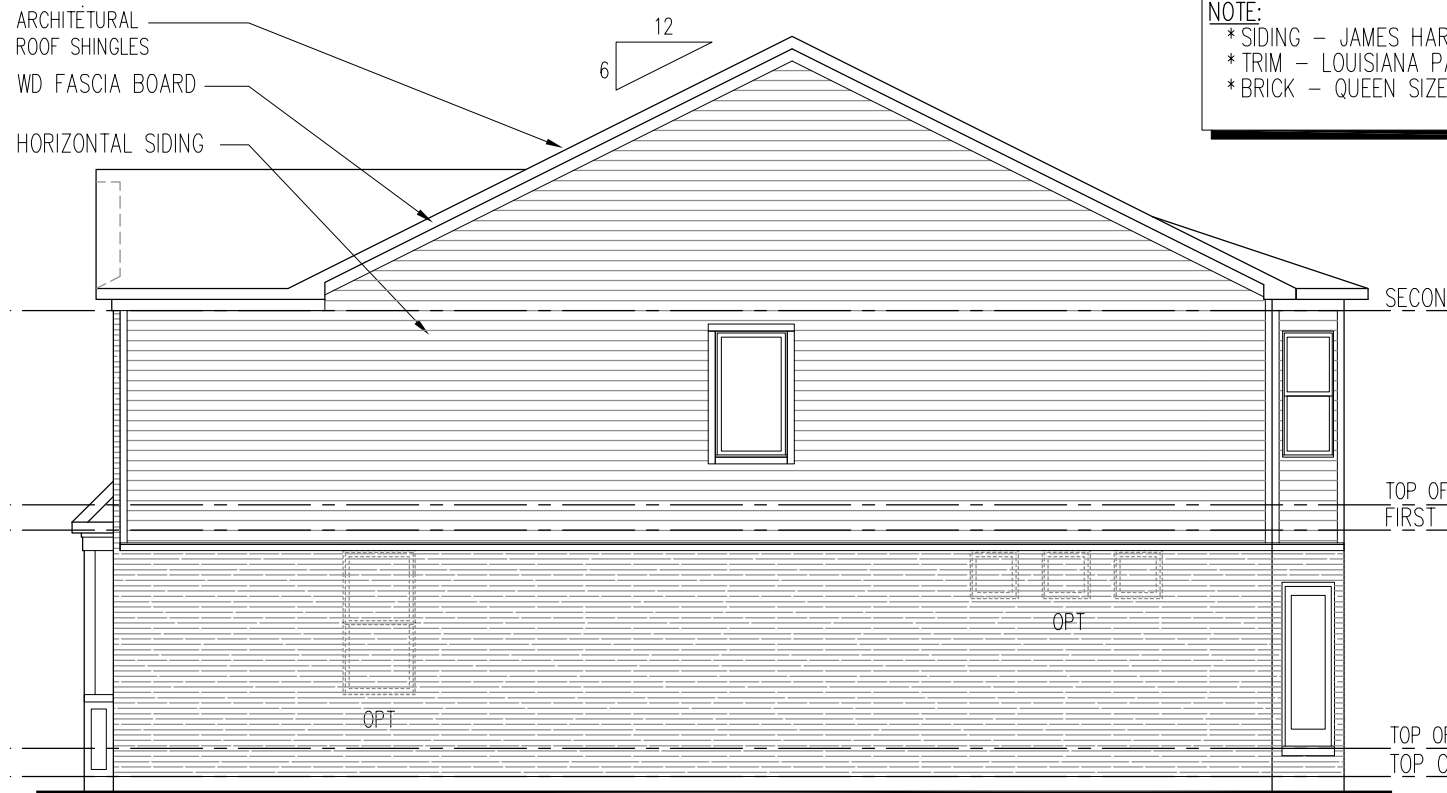
(c) Copyright 2024 PulteGroup, Inc.







LEFT ELEVATION



RIGHT ELEVATION

**NOTE:**  
 \* SIDING - JAMES HARDIE (ENGINEERED)  
 \* TRIM - LOUISIANA PACIFIC (ENGINEERED)  
 \* BRICK - QUEEN SIZE

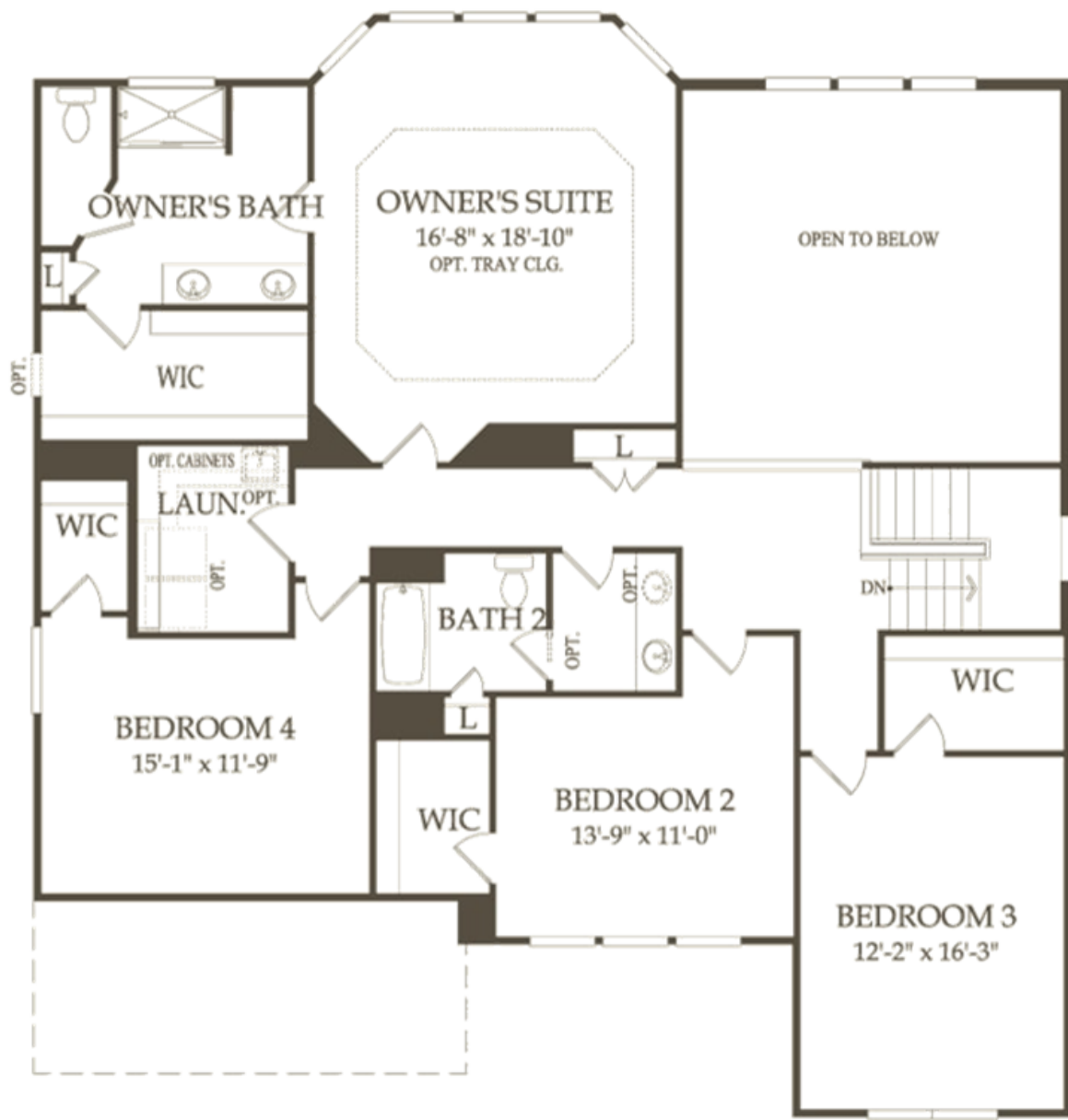
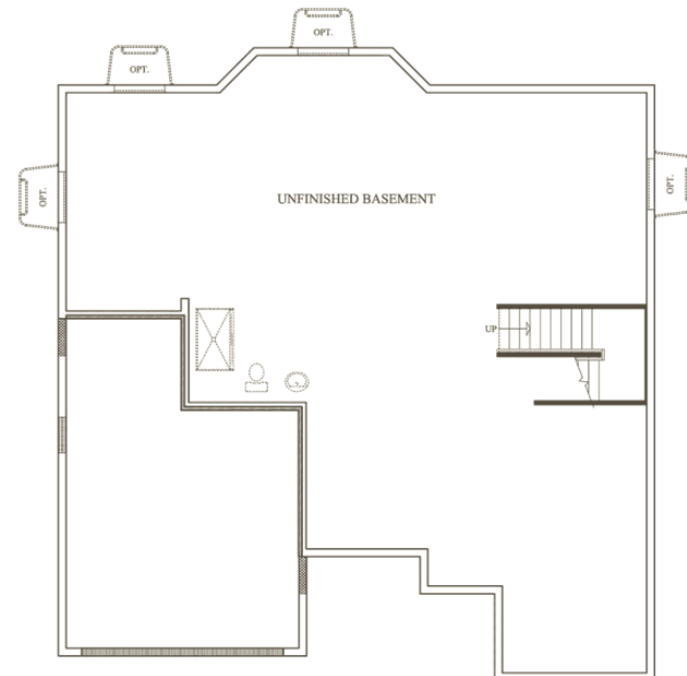
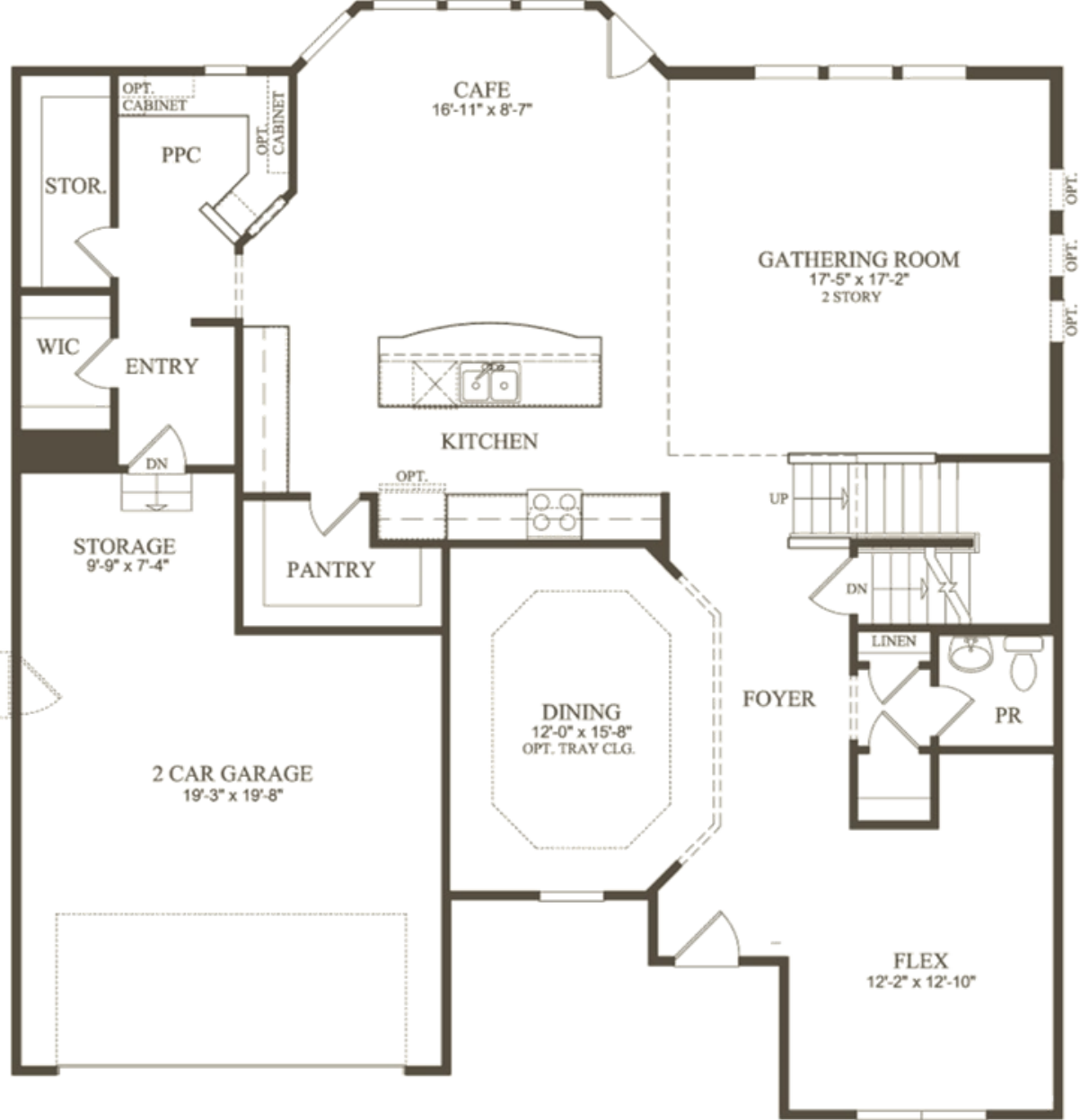


FRONT ELEVATION



REAR ELEVATION







**Greenfield**



**Hilltop**



**Riverton**



**Westchester**





**Willwood**



**Woodside**



**Castleton**



Estates at Ravinia Meadow

Orland Park, IL



**Hilltop**



**Willwood**



**Riverton**



**Woodside**



**Castleton**

Plan	3 Car Garage				
	Home Width	Garage Door Width	Percentage	Garage Width (Outer Wall to Outer Wall)	Percentage
Greenfield	N/A	N/A	N/A	N/A	N/A
Hilltop	58.0	24.0	41%	30.0	52%
Riverton	58.0	24.0	41%	30.0	52%
Westchester	N/A	N/A	N/A	N/A	N/A
Willwood	58.0	24.0	41%	30.0	52%
Woodside	60.0	24.0	40%	30.0	50%
Castelton	58.0	24.0	41%	30.0	52%

### Note on Architecture

To enhance the aesthetic of side elevations visible from the public view, in such circumstances Pulte will require that all optional side windows be built. Additionally, (and where appropriate depending on the front elevation selected) these side windows will have soldier coursing and / or shutters.

In the below example, if a future homebuyer purchases the adjacent Willwood elevation on lot 52, on the Right Elevation only -- as that is the elevation visible from the public view -- the homebuyer will be required to select the optional windows (circled in green) and the top floor windows (circled in blue) will have shutters.

