

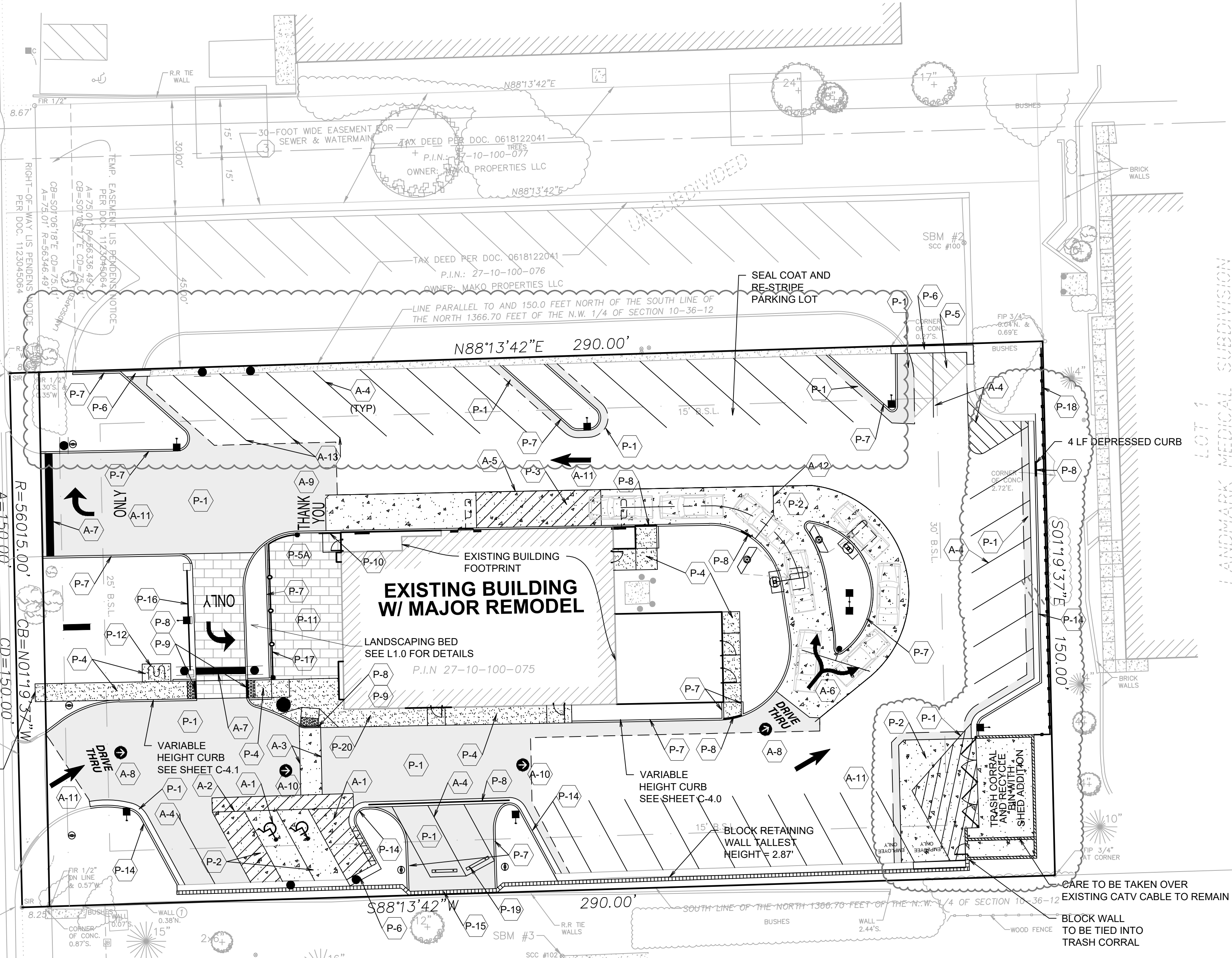
BOARD APPROVED

Case No: 2016-0470
 Date: November 21, 2016

W/Conditions: Yes
 W/Out Conditions: _____

VILLAGE OF ORLAND PARK

LAGRANGE RD.
 (IDOT JURISDICTION)



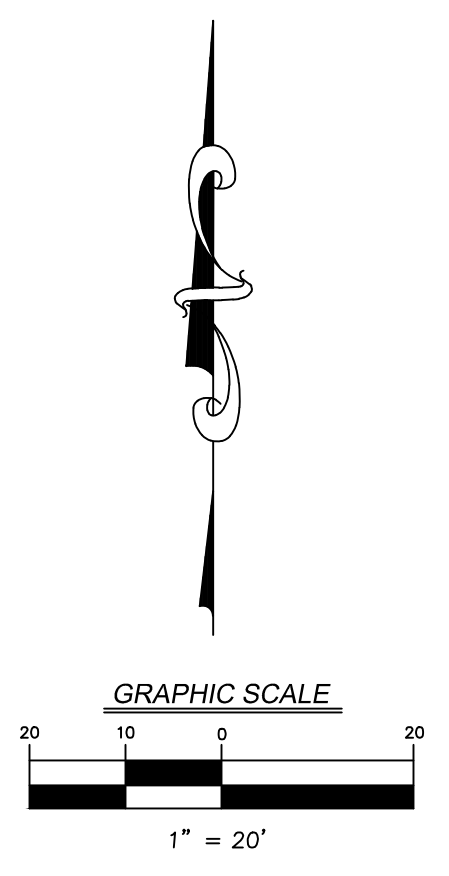
LANDSCAPE SUMMARY	
EXISTING LANDSCAPING	
PERVIOUS AREA	2,758 SF (6.5%)
IMPERVIOUS AREA	39,552 SF (93.5%)
PROPOSED LANDSCAPING	
PERVIOUS AREA	
GRASS AREA	7,354 SF
BRICK PAVERS (40%)	1,416 SF X 40% = 564 SF
TOTAL	7,354 + 564 = 7,918 SF (18.7%)
IMPERVIOUS AREA	
BRICK PAVERS (60%)	1,416 SF X 60% = 850 SF
TOTAL	42,310 - 7,918 = 34,392 SF (81.3%)

PAVING LEGEND	
P-1	HEAVY BITUMINOUS PAVEMENT 1.5" HMA BITUMINOUS SURFACE COURSE, MIX "C", N50 2.5" HMA BITUMINOUS BINDER COURSE, IL 19, N50 8" AGGREGATE BASE COURSE - TYPE B, CA6 WOVEN GEOTEXTILE FABRIC 4OZ./SQ. YD.
P-2	CONCRETE PAVEMENT - DRIVE-THRU LANE 6" P.C. CONCRETE PAVEMENT WITH (6X6)W2.9=W2.9) W.W.F. 4" AGGREGATE BASE COURSE - CA6 WOVEN GEOTEXTILE FABRIC 4OZ./SQ. YD.
P-3	CONCRETE PAVEMENT - DRIVE-THRU LANES (OPTIONAL) 6" P.C. CONCRETE PAVEMENT WITH 6"X6" NO. 10 WWF. 4" AGGREGATE BASE COURSE - CA6 WOVEN GEOTEXTILE FABRIC 4OZ./SQ. YD.
P-4	CONCRETE SIDEWALK 5" P.C. CONCRETE PAVEMENT WITH 6"X6" W1.11XW1.11 W.W.F. 4" AGGREGATE BASE COURSE - CA6
P-5	ASPHALT PAVEMENT MILL & OVERLAY ASPHALT 1.5" PAVEMENT
P-5A	PERMEABLE PAVERS PAVERS - SEE DETAIL ON SHEET C-6.0 CONSTRUCTION DETAILS

KEY	DESCRIPTION
P-6	10" X 24" CONCRETE CURB
P-7	6" CONCRETE BARRIER CURB
P-8	DEPRESSED CONCRETE CURB
P-9	DETECTABLE WARNING STRIP
P-10	HANDRAIL
P-11	OUTDOOR SEATING AREA
P-12	BIKE RACK
P-13	86-12 CURB & GUTTER
P-14	86-18 CURB & GUTTER
P-15	RETAINING WALL
P-16	FENCE WITH BRICK PILLARS
P-17	4" ALL ALUMINUM FENCE SEE PLANS BY WAUSAU TILE
P-18	6" BOARD ON BOARD FENCE
P-19	RUBBER WHEEL STOP
P-20	TURN DOWN SIDEWALK

STRIPING LEGEND	
A-1	ADA ACCESSIBLE STALL WITH YELLOW SYMBOL PER ADA REQUIREMENTS
A-2	ACCESSIBLE AISLE - 4" YELLOW STRIPES @ 45°, 2' O.C.
A-3	6" WIDE PEDESTRIAN ACCESS AISLE WITH 4" WHITE STRIPES
A-4	4" WIDE PARKING STRIPE OR STRIPED AREA - 4" WHITE STRIPES @ 45°, 2' O.C.
A-5	6" YELLOW DRIVE-THRU STRIPE
A-6	DOUBLE HEADED ARROW PAINTED YELLOW
A-7	2' WIDE WHITE STOP BAR
A-8	"DRIVE-THRU" W/ARROW YELLOW PAVEMENT MARKING
A-9	"THANK YOU" YELLOW PAVEMENT MARKING W/ 6" DOUBLE PAINTED YELLOW STRIPE
A-10	YELLOW PARKING LOT DIRECTIONAL ARROWS
A-11	WHITE INGRESS / EGRESS ARROWS
A-12	6" WIDE YELLOW MERGE STRIPE
A-13	6" WIDE YELLOW STRIPE

SITE DATA		
STREET LOCATION: 14445 S. LAGRANGE ROAD, ORLAND PARK		
SITE AREA: 42,310 SF (0.97 AC.)		
CURRENT ZONING: VILLAGE CENTER DISTRICT (VCD)		
BUILDING AREA: 4597 GROSS SQ.FT.		
ZONING REQUIREMENTS	REQUIRED	PROVIDED
LANDSCAPE SETBACKS		
NORTH SIDE	10'	5.2'
WEST SIDE	10'	10'
EAST SIDE	10'	10'
SOUTH SIDE	10'	10'
INTERIOR LANDSCAPE	N/A	N/A
BUILDING SETBACKS		
NORTH SIDE	15'	15'
WEST SIDE	25'	25'
EAST SIDE	30'	30'
SOUTH SIDE	15'	15'
PARKING STALL SIZE		
	9'x18'	9'x18'
PARKING RESTAURANT:		
	38 STANDARD	2 ACCESSIBLE
	40 TOTAL	



PREPARED BY: **V3 Companies**
 7325 Janes Avenue
 Woodridge, IL 60517
 630.724.9200 phone
 630.724.9202 fax
 www.v3co.com

REVISIONS:

NO.	DATE	DESCRIPTION
2	10/25/16	REVISED PER VILLAGE COMMENTS
1	9/23/16	REVISED PER VILLAGE COMMENTS

DRAWN BY: **M. McDonald's USA, LLC**
 STD ISSUE DATE: 06-03-16
 REVIEWED BY: MDN
 DATE ISSUED: 06-03-16

TITLE: **SITE PLAN**
 DESCRIPTION: **MCDONALD'S - ORLAND PARK, ILLINOIS**
 SHEET NO: **012-0280**
 SITE ADDRESS: **14445 S LAGRANGE ROAD, ORLAND PARK**
 SHEET NO: **C-3.0**
 SITE PLAN