

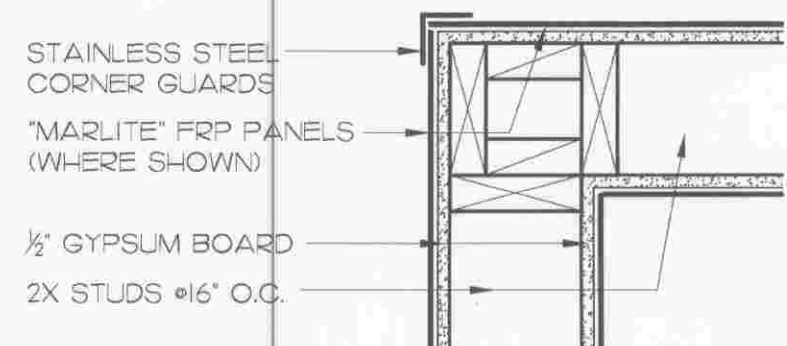
5. GENERAL NOTES:

- DIMENSIONS ARE FROM THE FACE OF STUD TO FACE OF STUD (UNLESS OTHERWISE NOTED).
- NOT USED.
- PROVIDE 5/8" HIGH CONCRETE MILLWORK CURBS BY THE GENERAL CONTRACTOR (REF. CLAYTON FIXTURE SHOP DRAWINGS FOR EXACT LOCATIONS & DIMENSIONS).
- REFER TO INTERIOR ELEVATIONS FOR BLOCKING WITHIN WALLS FOR SHELVING, BRACKETS, GROUNDS, FIXTURES, ETC.
- ALL FASTENERS, ANCHORS, CLIPS, STRAPS ETC. WHICH ARE IN CONTACT WITH COPPER BASED TREATED WOOD AND ARE LESS THAN 3/8" THICK SHALL BE G185 COATED GALVANIZED, STAINLESS STEEL OR AN APPROVED EQUAL.

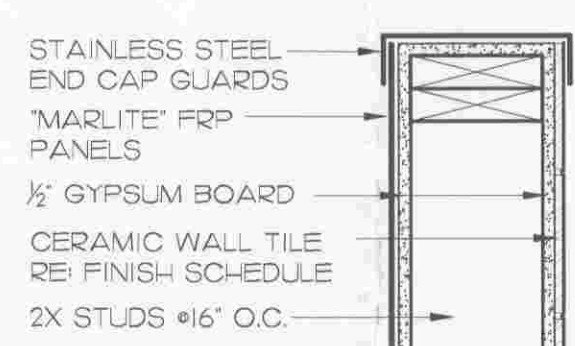
- LIMITED COMBUSTIBLE CONSTRUCTION SHALL CONSIST OF 6" METAL STUDS (COORDINATE GAUGE W/ STRUCTURAL) W/ 1/2" DURAROCK. LIMITED COMBUSTION CONSTRUCTION SHALL BE USED WITHIN 18" BEHIND & UNDER ALL HOODS. KRAFT FACE SHALL BE INSTALLED ON WARM SIDE OF WALL.
- PROVIDE 6" KRAFT FACED FIBERGLASS (R-9) BATT INSULATION WITH FLAME SPREAD INDEX OF NOT MORE THAN 25 AND SMOKE-DEVELOPED INDEX OF NOT MORE THAN 450 AT ALL EXTERIOR WALLS.
- REFER TO CIVIL DRAWINGS FOR LOCATIONS OF WALKS, BOLLARDS, LANDSCAPING AREAS, FLAG POLE, ETC.
- REFER TO INTERIOR ELEVATIONS FOR LOCATIONS AND TYPES OF CORNER GUARDS.
- PROVIDE 3 1/2" BATT INSULATION WITH FLAME SPREAD INDEX OF NOT MORE THAN 25 AND SMOKE-DEVELOPED INDEX OF NOT MORE THAN 450 IN RESTROOM PERIMETER WALLS.
- NOT USED.

LEGEND:

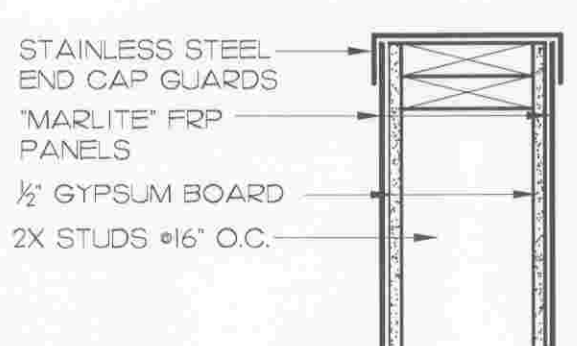
- 6" METAL STUDS
RE: GENERAL NOTES, #6
- 6" WOOD STUD WALL
- 2X6 TREATED WOOD STUDS
- 2X8 WOOD STUD WALL
- 2X4 WOOD STUD WALL
- BRICK VENEER
- 8" C.M.U.
COLUMN, RE: STRUCTURAL



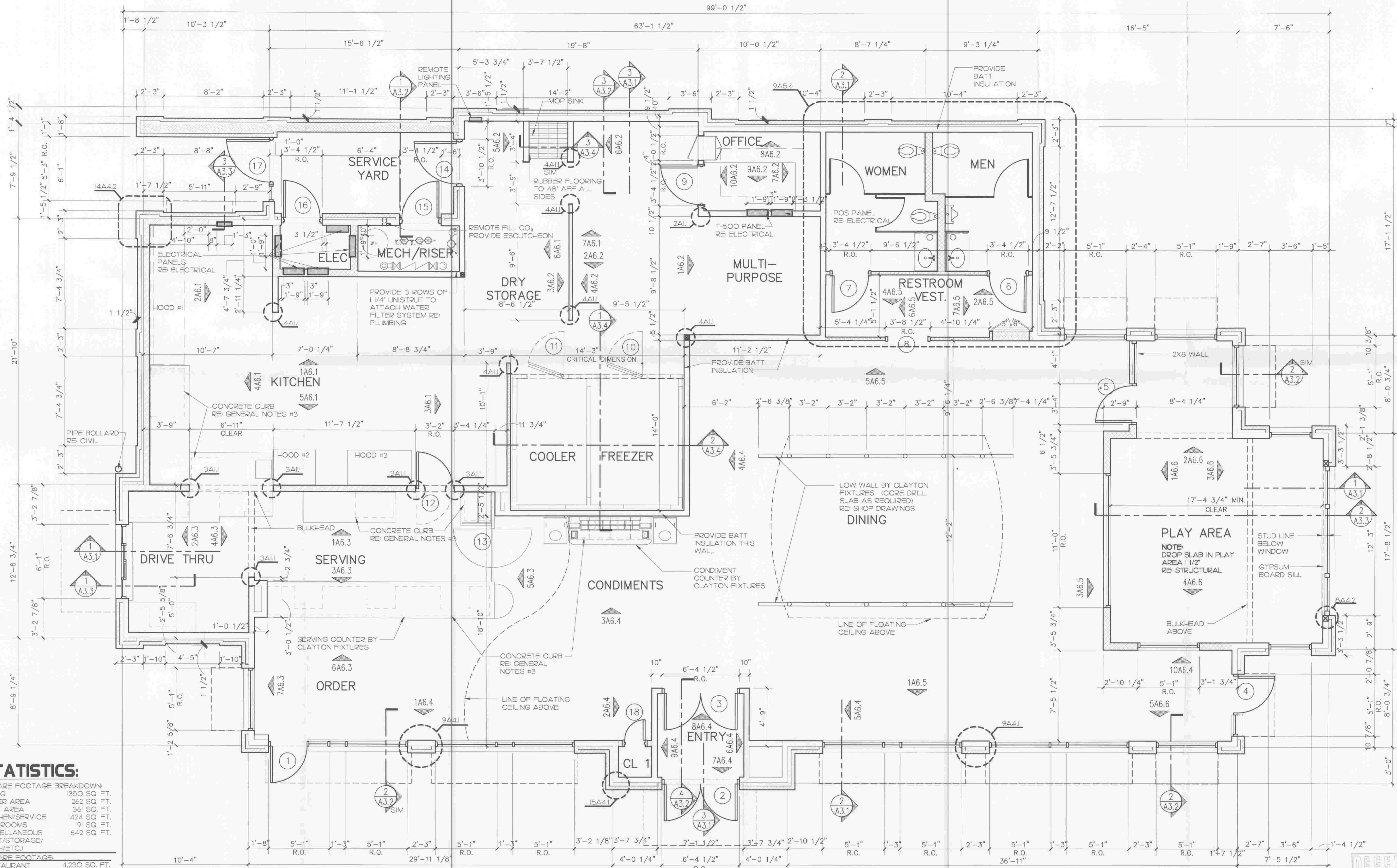
2 CORNER GUARD
1 1/2"=1'-0"



3 END CAP WITH TILE
1 1/2"=1'-0"



4 END CAP
1 1/2"=1'-0"



I FLOOR PLAN
1/4"=1'-0"

STATISTICS:

SQUARE FOOTAGE BREAKDOWN:	
DINING	1350 SQ. FT.
ORDER AREA	262 SQ. FT.
PLAY AREA	361 SQ. FT.
KITCHEN/SERVICE	1424 SQ. FT.
RESTROOMS	191 SQ. FT.
MISCELLANEOUS (VEST/STORAGE/MECH/ETC.)	642 SQ. FT.
SQUARE FOOTAGE:	
RESTAURANT	4,230 SQ. FT.
SERVICE YARD	121 SQ. FT.
SEAT COUNT:	
DINING	122 SEATS
TOTAL	122 SEATS

BOARD #11-0344
DATE 10-5-09
W/CONDITIONS
W/O CONDITIONS



5200 Buffington Rd.
Atlanta Georgia,
30349-2998

Revisions:
Mark Date By
△
Mark Date By
△
Mark Date By
△

ILLINOIS DESIGN FIRM #184-002363
E. H. ARCHITECTS, P.C.
THE HORSE BARN AT
MARYLAND FARMS
289 WARD CIRCLE, SUITE 1
BENTWOOD, TENNESSEE
PHONE: 662-977-5311
FAX: 662-977-9878
E-MAIL: general@eharchitect.com

ARCHITECTS

STORE #2638
Chick-Fil-a FSU
S06A

ORLAND PARK, IL
SHEET TITLE
FLOOR PLAN

DWG EDITION 07.1
REVISION

Job No. : ---
Store : 2638
Date : 07/09/09
Drawn By : ---
Checked By : ---
Sheet

A-II