

Orland Crossing Board of Trustees Submittal Landscape Package Orland Park, IL December 9, 2013





Orland Park Crossing Preliminary Parking Counts

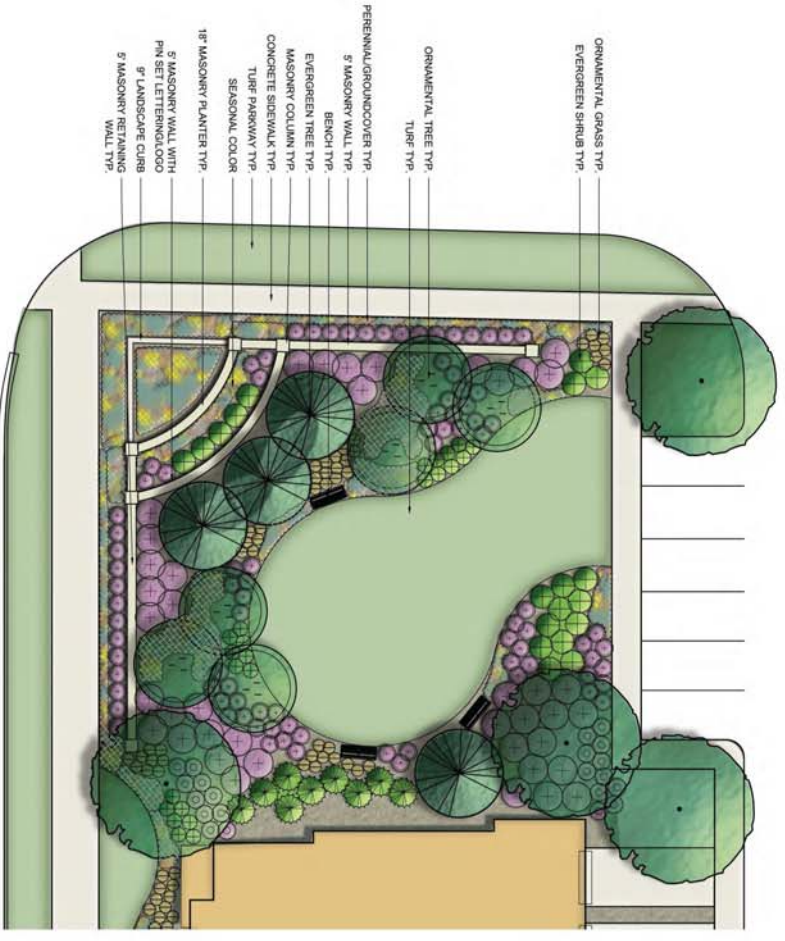
Apartment Units	Surface	Tandem	Garage	Development On-Site	Hampton/D On-Site	Total	Per Unit Ratio
158	150	52	52	21	0	21	1.64 per unit
Townhome Units	25	0	50	50	0	21	4.84 per unit
Swimways	36	0	76	76	0	21	4.55 per unit

LAKOTA
 THE LAKOTA GROUP, INC.



December 09, 2013

Main Entry Monument



- ORNAMENTAL GRASS TYP.
- EVERGREEN SHRUB TYP.
- ORNAMENTAL TREE TYP.
- TURF TYP.
- PERENNIAL/GROUNDCOVER TYP.
- 5' MASONRY WALL TYP.
- BENCH TYP.
- EVERGREEN TREE TYP.
- MASONRY COLUMN TYP.
- CONCRETE SIDEWALK TYP.
- TURF PARKWAY TYP.
- SEASONAL COLOR.
- 18" MASONRY PLANTER TYP.
- 5' MASONRY WALL WITH PIN SET LETTERING/LOGO
- 9" LANDSCAPE CURB
- 5' MASONRY RETAINING WALL TYP.

141ST STREET



EVERGREEN SCREEN TO SEPARATE UNITS FROM GREENSPACE

ENTRY MONUMENT WITH RAISED PLANTER AND MASONRY COLUMNS

BENCHES TO PROVIDE DESTINATION POINTS WITHIN THE GREENSPACE

REVA Development Partners

Orland Crossing Orland Park, IL

Amenity Spaces



ADIRONDACK CHAIRS IN LAWN



COMMUNITY PICNIC TABLES



ORNAMENTAL TREES TO PROVIDE SEASONAL INTEREST



141ST STREET

95th STREET

- CONCRETE WALK FROM BIKE ROOM
- CRUSHED STONE PICNIC AREA
- EVERGREEN TREE TYP.
- ORNAMENTAL GRASS TYP.
- SHADE TREE TYP.
- ORNAMENTAL TREE TYP.
- DECIDUOUS SHRUB TYP.
- ADIRONDACK CHAIRS TYP.
- PERENNIAL/GROUNDCOVER TYP.
- EVERGREEN SHRUB TYP.
- 4' MASONRY WALL TYP.
- SEASONAL COLOR
- 18" MASONRY PLANTER
- MASONRY COLUMN TYP.
- CONCRETE SIDEWALK
- TURF PARKWAY

Community Picnic Area

LAKOTA

THE LAKOTA GROUP, INC.



0' 10' 20'

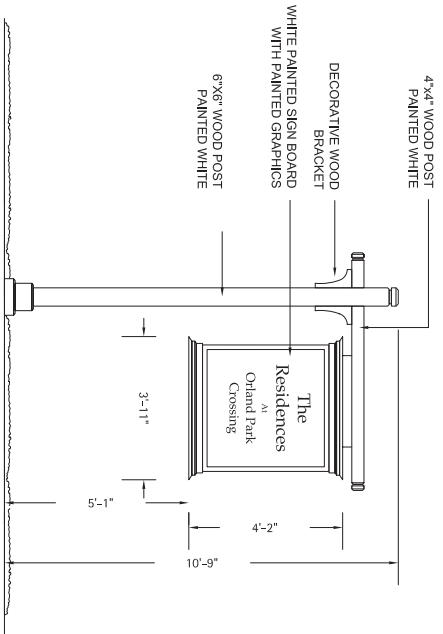
December 09, 2013

EXHIBIT D



- 6.5' HT. FREESTANDING MONUMENT WALL (BRICK TO MATCH BUILDINGS) W/ PIN-SET, ILLUMINATED LETTERING
- 7.5' HT. MASONRY MONUMENT PIER (BRICK TO MATCH BUILDINGS) W/ PRECAST LIMESTONE CAP
- 18" HT. MASONRY PLANTER/SEATWALL (BRICK TO MATCH BUILDINGS) W/ PRECAST LIMESTONE CAP/CORNING
- DECORATIVE PAVER AREA
- CONCRETE SIDEWALK

Main Entrance Signage (Northeast Corner of 141st Street and West Frontage Road)



Secondary Entrance Signage (John Humphrey Drive)

REVA Development Partners

Orland Park Crossing

Orland Park, IL

Development Entrance Signage



Representative Photos - Illustrative Purposes Only



LAKOTA

THE LAKOTA GROUP, INC.



BOCCIE BALL COURT



FIRE BOWL



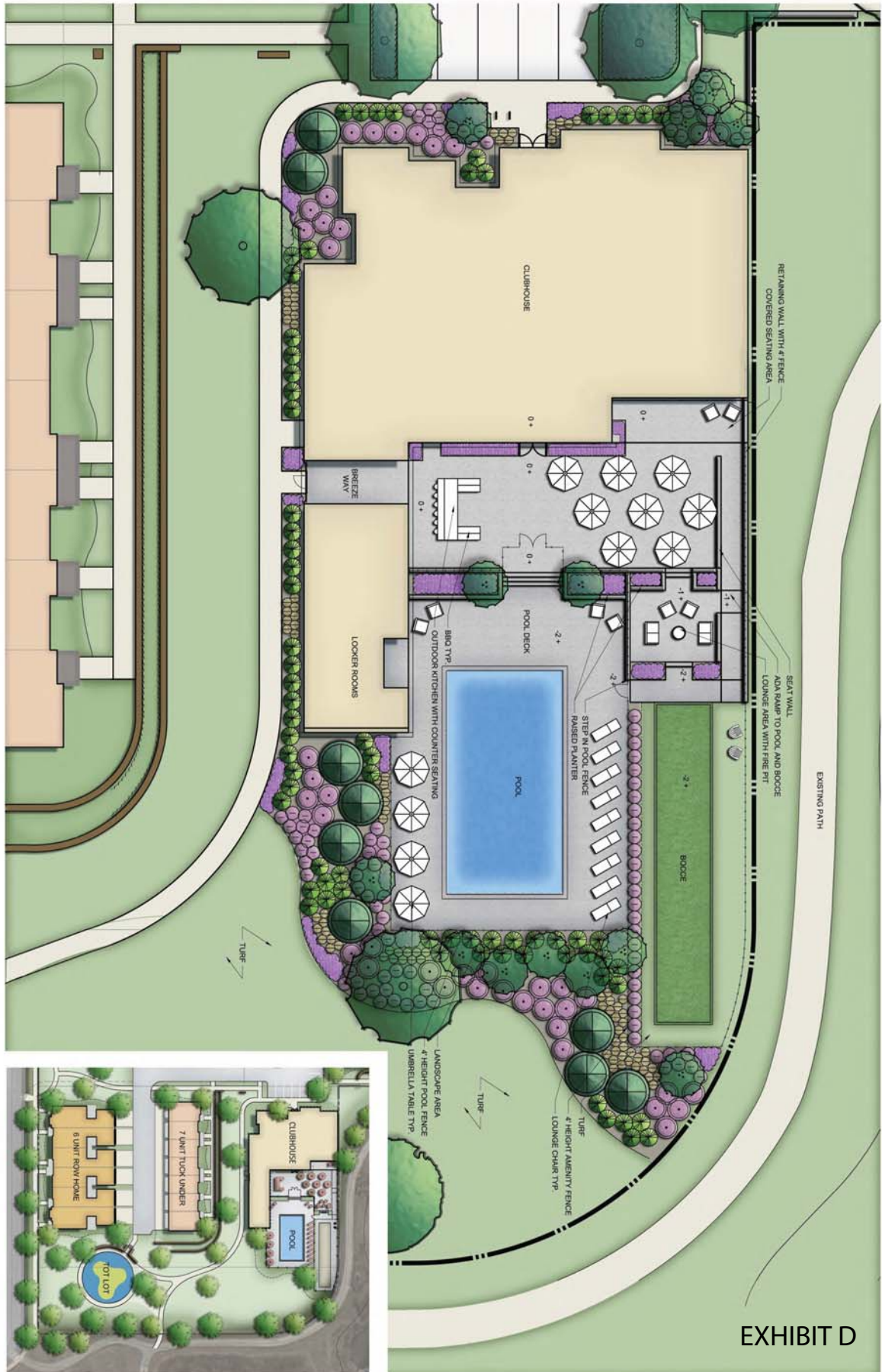
CLUBHOUSE POOL



OUTDOOR KITCHEN



ALUMINUM POOL AND AMENITY FENCE



REVA Development Partners
Orland Park Crossing Orland Park, IL
 Clubhouse Amenity and Landscape Plan

LAKOTA

THE LAKOTA GROUP, INC.

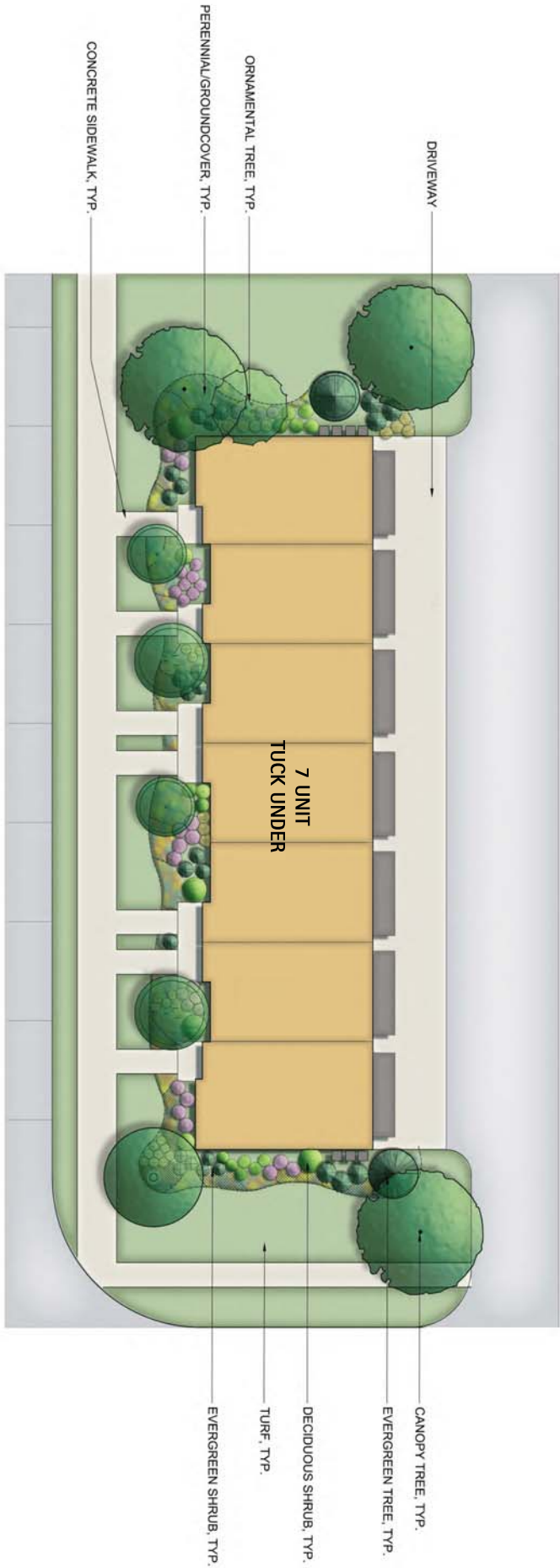


0' 10' 20'

December 09, 2013

EXHIBIT D





REVA Development Partners

Orland Park Crossing Orland Park, IL

Typical Tuck Under Landscape Plan

LAKOTA
THE LAKOTA GROUP, INC.

