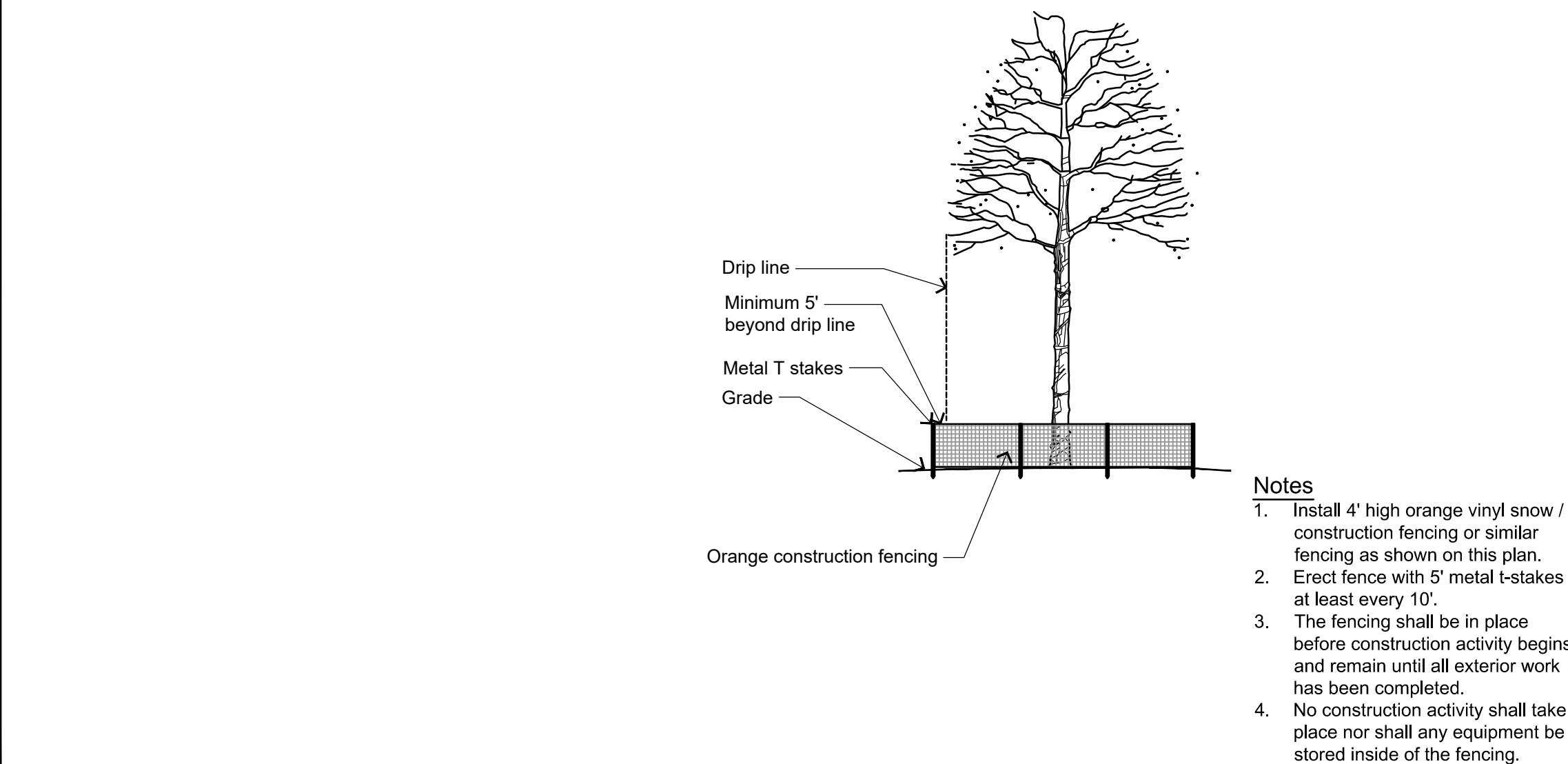


KEY MAP

GENERAL LANDSCAPE DETAILS



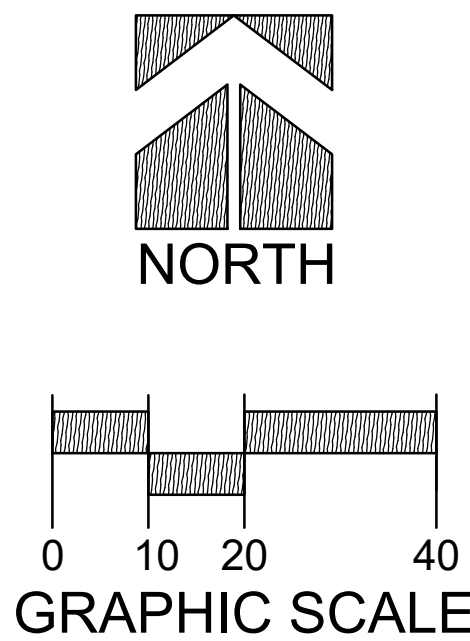
1 TREE PROTECTION FENCING DETAIL  
NOT TO SCALE  
ras-1-2220234H-03

GENERAL LANDSCAPE NOTES

- ALL DETAILS AND SPECIFICATIONS TO BE DETERMINED ON FINAL LANDSCAPE PLANS.
- ALL PLANTINGS SHALL COMPLY WITH STANDARDS AS DESCRIBED IN AMERICAN STANDARD OF NURSERY STOCK - ANSI Z60.1 (LATEST VERSION)
- MULCH: ALL PLANTING BEDS TO RECEIVE 3" DEEP LAYER OF SHREDDED HARDWOOD BARK MULCH.
- TURF SEED: DURABLE, PREMIUM COMMERCIAL BLEND.
- REPAIR ALL LAWN AREAS DISTURBED DUE TO CONSTRUCTION OR AS OTHERWISE NOTED - Prepare the disturbed areas by scarifying compacted soil to a depth of 3-4" and add additional topsoil to restore to original grade. Prepare seed bed by removing all surface stones 1" or larger. Apply a starter fertilizer and premium quality turf seed mix at recommended rates which will germinate quickly. It is the responsibility of the landscape contractor to establish and guarantee a smooth, uniform, quality turf. If straw mulch is used as a mulch covering, a tackifier may be necessary to avoid wind damage. Marsh hay containing reed canary grass is not acceptable as a mulch covering.

NOTE: DISTURBED LAWN AREA ON WEST AVE. WEST OF JUNIOR HIGH BUILDING AND ALONG SIDEWALK NEEDS REPAIR DURING PHASE 1.

PHASE 1 LANDSCAPE



THIS PLAN IS FOR MUNICIPAL REVIEW  
NOT FOR BIDDING  
OR CONSTRUCTION PURPOSES

R.A.SMITH, INC. ASSUMES NO RESPONSIBILITY FOR DAMAGES, LIABILITY OR COSTS RESULTING FROM CHANGES OR ALTERATIONS MADE TO THIS PLAN, WITHOUT THE EXPRESSED WRITTEN CONSENT OF R.A.SMITH, INC.  
ALL COPYRIGHTS TO THESE DRAWINGS ARE RESERVED. THEY MAY NOT BE COPIED, CHANGED, OR ASSIGNED TO ANY THIRD PARTY IN ANY MANNER WITHOUT OBTAINING THE EXPRESSED WRITTEN PERMISSION OF R.A.SMITH, INC.

reSmith  
1214 E. BIRCH AVE. SUITE 102  
MOUNTAIN VIEW, IL 60053

Larson Engineering, Inc.  
141 E. Douglas Road, Suite 208  
Bolingbrook, Illinois 60440

TRIA  
ARCHITECTURE

CIVIL CONSULTANT:  
(P) 630.693.7171

STRUCTURAL CONSULTANT:  
(P) 630.341.0549  
(P) 630.351.0864

PEP CONSULTANT:  
(P) 312.982.0560

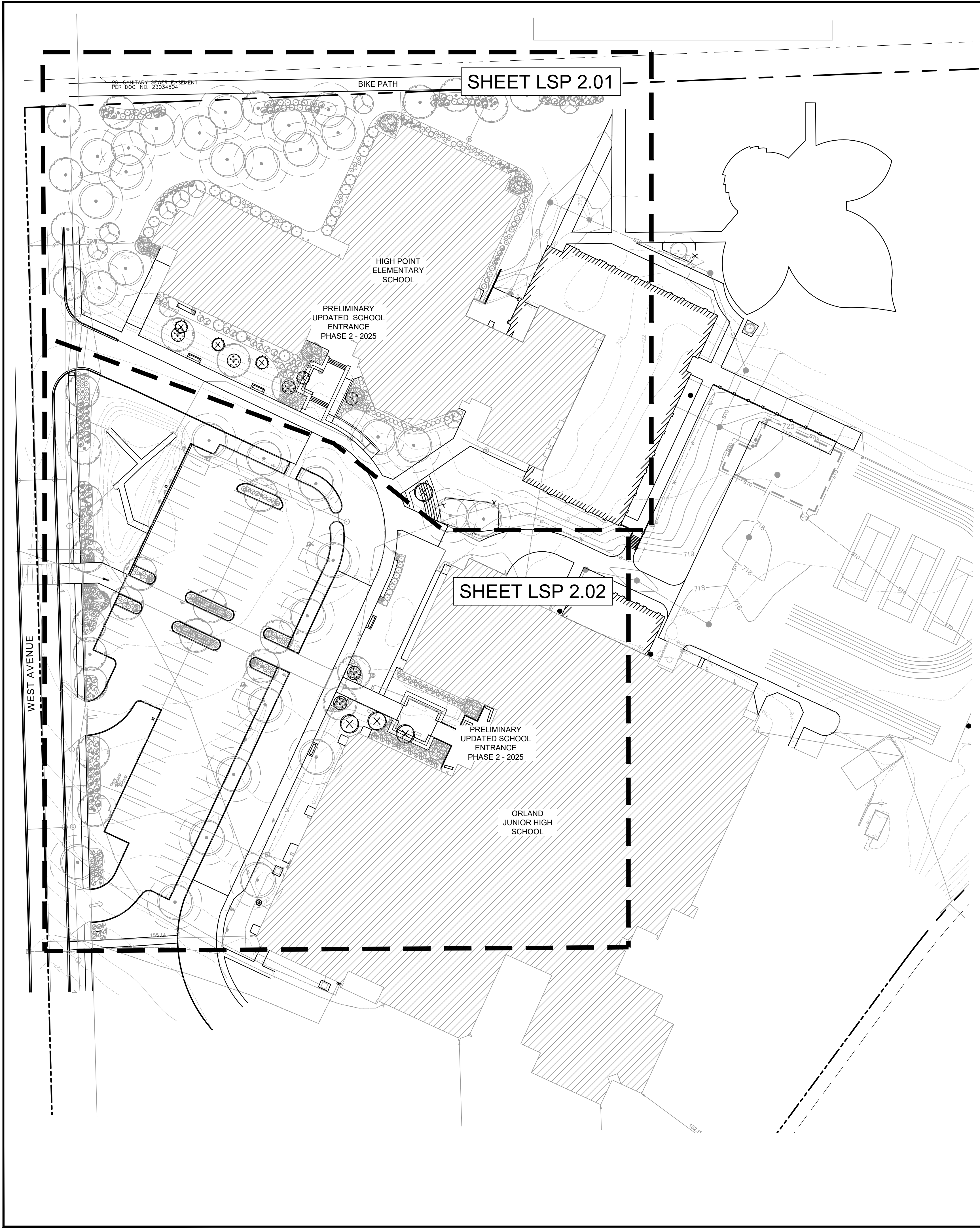
ORLAND SCHOOL DISTRICT 135  
2023 ADDITIONS AND RENOVATIONS AT:  
HIGH POINT ELEMENTARY SCHOOL & ORLAND JUNIOR HIGH  
14825 & 14855 WEST AVENUE, ORLAND PARK, IL 60462

REVISION	DATE	BY	DESCRIPTION
1	2/17/2023	AS	ADDENDUM # 1
2		AS	
3		AS	
4		AS	
5		AS	

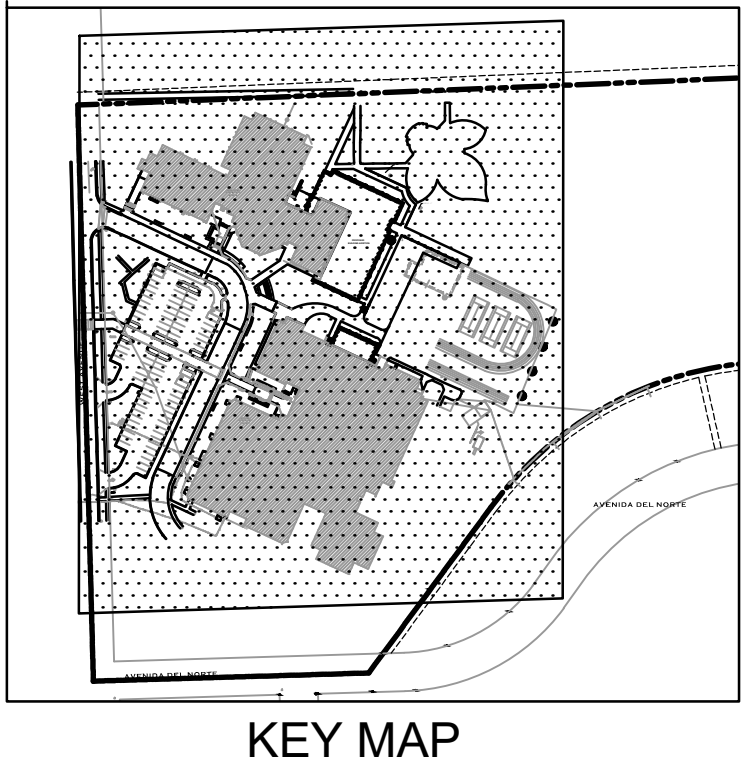


LSP1.00





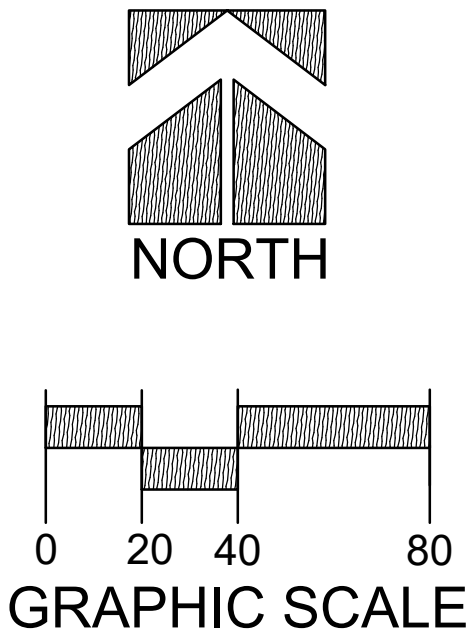
PROPOSED PHASE 2 HARDSCAPE, PARKING LOT ISLANDS, AND PLANT LOCATIONS SUBJECT TO CHANGE DURING FINAL DESIGN. ANY PLAN CHANGES WILL BE SUBJECT TO REVIEW AND APPROVAL BY THE VILLAGE OF ORLAND PARK STAFF.



- Orland Park, IL Land Development Code**  
**Section 6-305 Landscape and Tree Preservation**  
Landscape Zones
- 1. Landscape Parkways  
West Ave. Parkway - 531 LF  
Type "C" requirement - shade trees 40' OC  
REQUIRED: 14 Shade trees  
PROVIDED: 1 Existing Shade tree  
13 Proposed Shade trees
  - 2. Landscape Corridors - 155 LF  
West Ave. Corridor  
Corridor Type - Typical requirement - 3 shade trees and 1 Ornamental / Evergreen tree per 100 LF  
REQUIRED: 5 Shade trees and 2 ornamental trees  
PROVIDED: 5 Existing Shade trees and 2 Proposed Ornamental trees
  - 3. Landscape Bufferyards  
North Buffer - 400 LF  
Bufferyard Type "1" - requirement - 3 shade trees  
1 Ornamental / Evergreen tree and 16 shrubs per 100 LF  
REQUIRED: 12 Shade trees, 4 Ornamental trees and 64 shrubs  
PROVIDED: 5 Existing Shade trees  
6 Proposed Shade trees  
4 Proposed Ornamental trees  
64 Proposed Shrubs
  - 4. Foundation Planting - 756 LF  
1 Ornamental / Evergreen tree and 16 shrubs per 100 LF  
REQUIRED: 8 Ornamental trees and 121 shrubs  
PROVIDED: 8 Proposed Ornamental trees  
20 Existing shrubs  
102 Proposed shrubs
  - 5. Parking Lot Area Planting - Area 3,493 SF  
10' wide plant bed around parking perimeter facing street  
75% of plant material to be 3' ht  
75% of planting area to be plant materials, not lawn  
REQUIRED: 2,622 SF planted  
PROVIDED: 2,708 SF planted
  - 6. Parking Lot Islands  
REQUIRED: 1 Shade tree per parking island and 60% of islands to be planted  
PROVIDED: 1 Shade tree per parking island and all parking islands planted with shrubs, ornamental grasses and perennials.
  - 7. Signage Landscape  
Required: 3' - 7' perimeter planting around signage (per diagram)  
Provided: 3' - 7' perimeter planting around signage

- PLANT KEY
- EXISTING TREE TO BE REMOVED
  - TREE DRIPLINE
  - PROPOSED SHADE TREE
  - PROPOSED ORNAMENTAL TREE
  - EXISTING TREE TO REMAIN
  - PROPOSED EVERGREEN SHRUB
  - PROPOSED DECIDUOUS SHRUB
  - EXISTING SHRUB TO REMAIN
  - PROPOSED TREE FOR MITIGATION
  - TREE PROTECTION FENCE

Orland School District - High Point Elemenatry & Orland Junior High - Tree Mitigation							April 18, 2023
QTY	TREE	BOTANICAL NAME	SIZE	NATIVE OR NON-NATIVE	CONDITION	MITIGATION	NUMBER OF REPLACEMENT TREES
2	Scots Pine	Pinus sylvestris	10' - 14' Ht	non native	Fair	NA-species exempt	0
1	Austrian Pine	Pinus nigra	10' - 14' Ht	non native	Good	NA-species exempt	0
2	Flowering Pear	Pyrus calleryana	6" & 7"	non native	Fair	NA-species exempt	0
1	American Linden	Tilia americana	3"	native	Good	2 trees at 2.5" or 1 tree at 4"	2
1	Flowering Crab	Malus sp.	5"	native	Fair	2 trees at 2.5" or 1 tree at 4"	2



R.A.SMITH, INC. ASSUMES NO RESPONSIBILITY FOR DAMAGES, LIABILITY OR COSTS RESULTING FROM CHANGES OR ALTERATIONS MADE TO THIS PLAN, WITHOUT THE EXPRESSED WRITTEN CONSENT OF R.A.SMITH, INC.

ALL COPYRIGHTS TO THESE DRAWINGS ARE RESERVED. THEY MAY NOT BE COPIED, CHANGED, OR ASSIGNED TO ANY THIRD PARTY IN ANY MANNER WITHOUT OBTAINING THE EXPRESSED WRITTEN PERMISSION OF R.A.SMITH, INC.

CIVIL CONSULTANT: (P) 630.463.7172  
STRUCTURAL CONSULTANT: (P) 630.341.0549 (P) 630.351.0864  
MEP CONSULTANT: (P) 312.982.9560  
Larson Engineering, Inc. 141 E. Douglas Road, Suite 208, Bensenville, Illinois 60014  
P. PLANS ENGINEERING

ORLAND SCHOOL DISTRICT 135  
2023 ADDITIONS AND RENOVATIONS AT:  
HIGH POINT ELEMENTARY SCHOOL & ORLAND JUNIOR HIGH  
14825 & 14855 WEST AVENUE, ORLAND PARK, IL 60462

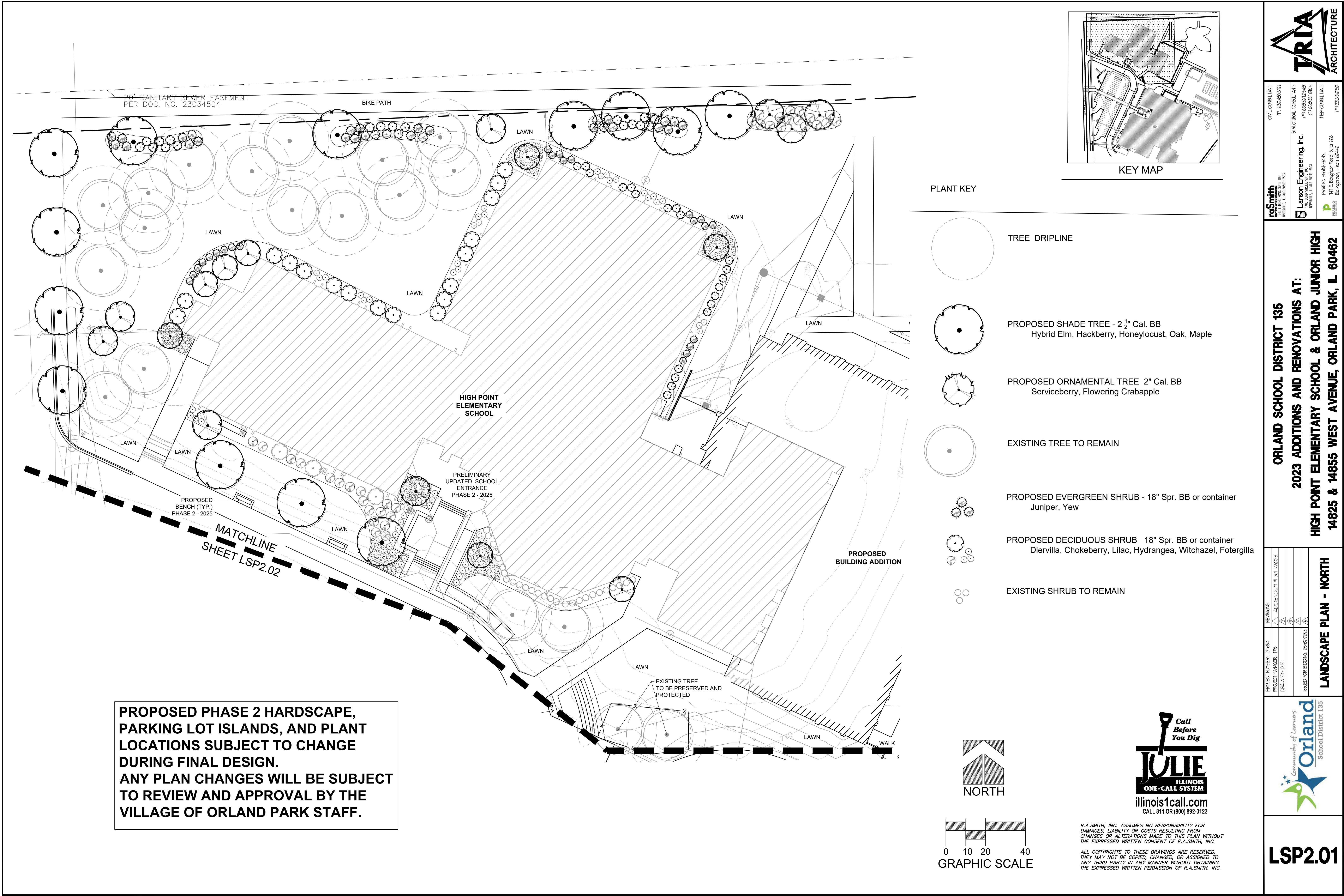
PROJECT NUMBER: 21-024	ISSUED FOR BIDDING: 01/02/2023
PROJECT MANAGER: TKS	DESIGN BY: DJB
DATE: 01/02/2023	ADDENDUM # 2/11/2023

LANDSCAPE PLAN - OVERALL

Community of Learners  
Orland School District 135

LSP2.00

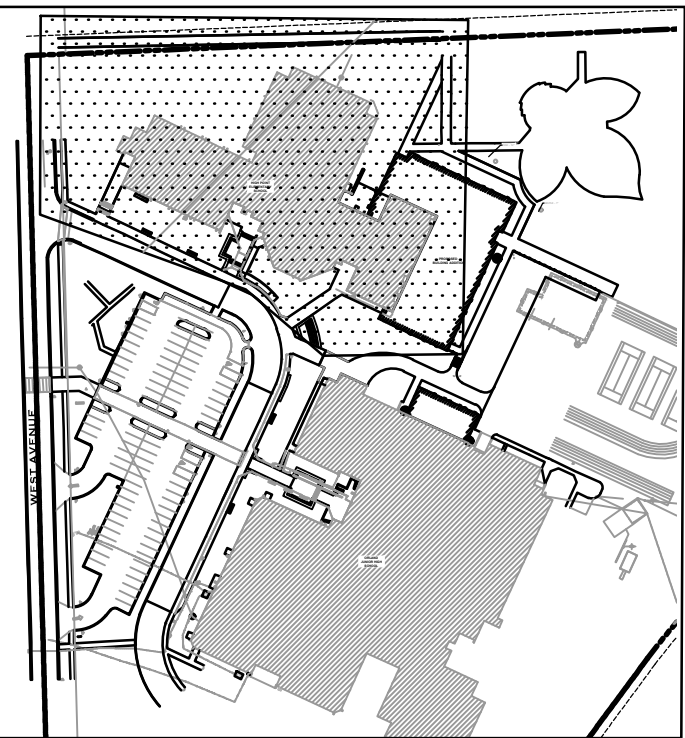
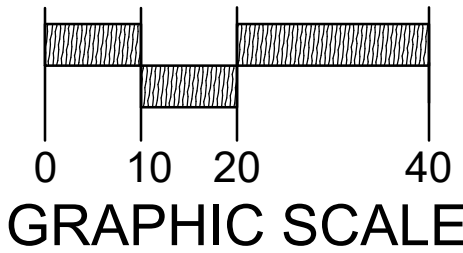
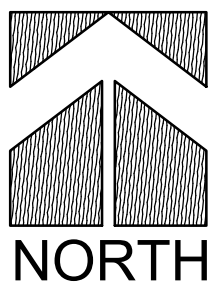




PROPOSED PHASE 2 HARDSCAPE,  
PARKING LOT ISLANDS, AND PLANT  
LOCATIONS SUBJECT TO CHANGE  
DURING FINAL DESIGN.  
ANY PLAN CHANGES WILL BE SUBJECT  
TO REVIEW AND APPROVAL BY THE  
VILLAGE OF ORLAND PARK STAFF.

PLANT KEY

- TREE DRIPLINE
- PROPOSED SHADE TREE - 2 1/2" Cal. BB  
Hybrid Elm, Hackberry, Honeylocust, Oak, Maple
- PROPOSED ORNAMENTAL TREE 2" Cal. BB  
Serviceberry, Flowering Crabapple
- EXISTING TREE TO REMAIN
- PROPOSED EVERGREEN SHRUB - 18" Spr. BB or container  
Juniper, Yew
- PROPOSED DECIDUOUS SHRUB 18" Spr. BB or container  
Diervilla, Chokeberry, Lilac, Hydrangea, Witchazel, Fothergilla
- EXISTING SHRUB TO REMAIN



KEY MAP

R.A.SMITH, INC. ASSUMES NO RESPONSIBILITY FOR  
DAMAGES, LIABILITY OR COSTS RESULTING FROM  
CHANGES OR ALTERATIONS MADE TO THIS PLAN, WITHOUT  
THE EXPRESSED WRITTEN CONSENT OF R.A.SMITH, INC.  
ALL COPYRIGHTS TO THESE DRAWINGS ARE RESERVED.  
THEY MAY NOT BE COPIED, CHANGED, OR ASSIGNED TO  
ANY THIRD PARTY IN ANY MANNER WITHOUT OBTAINING  
THE EXPRESSED WRITTEN PERMISSION OF R.A.SMITH, INC.

reSmith  
124 E. BURNHAM AVE. SUITE 102  
MORTDALE, ILLINOIS 60451-5503

Larson Engineering, Inc.  
141 E. Douglas Road Suite 208  
Bolingbrook, Illinois 60440

Pulsano Engineering  
141 E. Douglas Road Suite 208  
Bolingbrook, Illinois 60440

CIVIL CONSULTANT:  
(P) 630.469.5772

STRUCTURAL CONSULTANT:  
(P) 630.341.0549  
(P) 630.351.0844

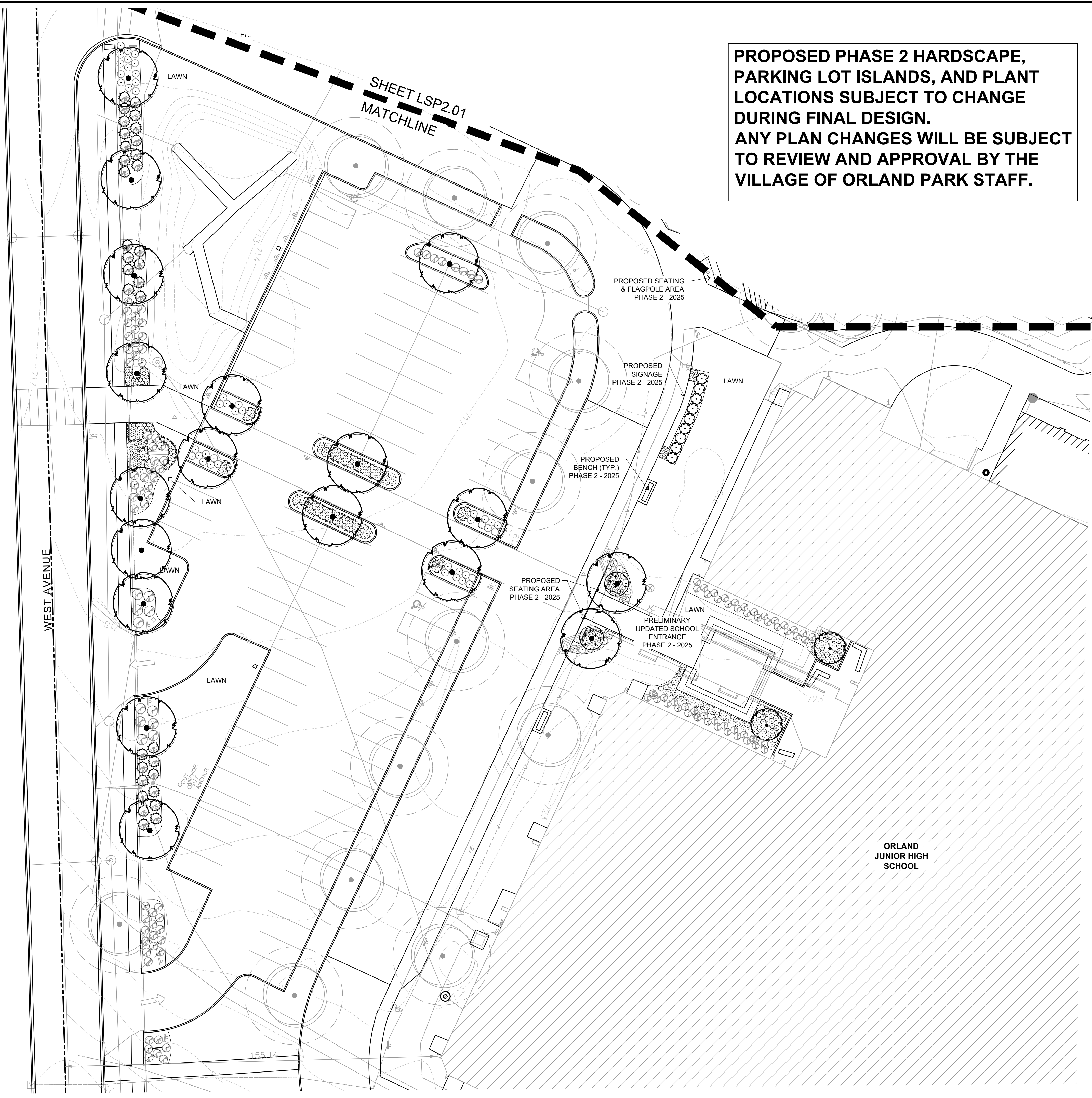
VEP CONSULTANT:  
(P) 312.982.9590

ORLAND SCHOOL DISTRICT 135  
2023 ADDITIONS AND RENOVATIONS AT:  
HIGH POINT ELEMENTARY SCHOOL & ORLAND JUNIOR HIGH  
14825 & 14855 WEST AVENUE, ORLAND PARK, IL 60462

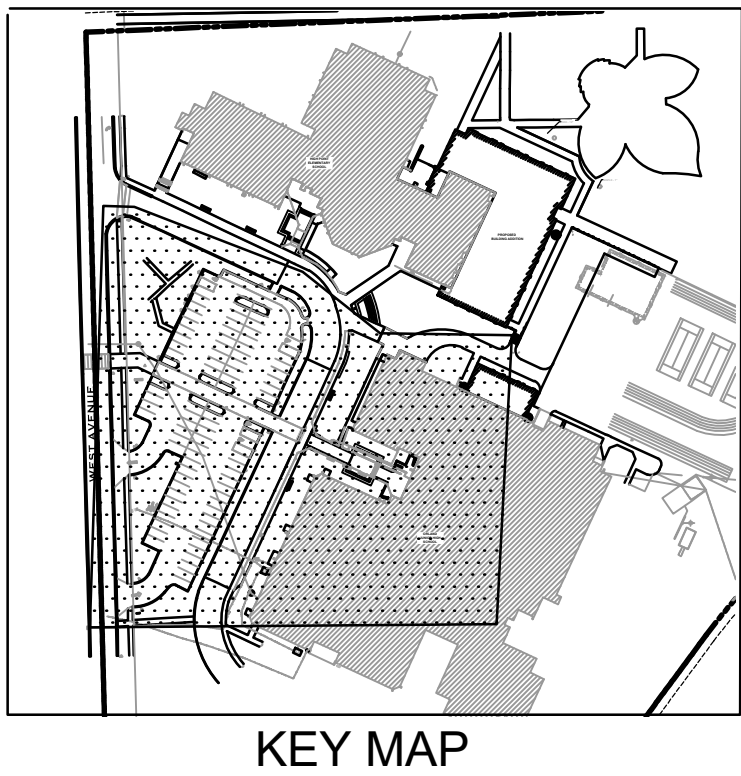
PROJECT NUMBER: 21-024	REVISED: 08/08/23	ADDENDUM # 2/11/2023
PROJECT MANAGER: TNS	DESIGNER: TNS	DATE: 08/08/23
DESIGN BY: DJB	ISSUED FOR BIDDING: 08/08/2023	1/3





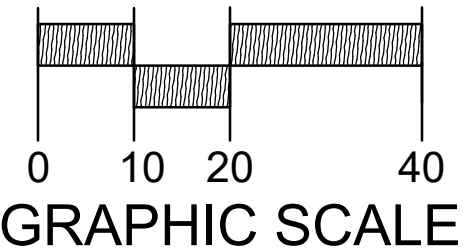
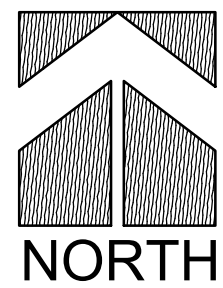


PROPOSED PHASE 2 HARDSCAPE,  
PARKING LOT ISLANDS, AND PLANT  
LOCATIONS SUBJECT TO CHANGE  
DURING FINAL DESIGN.  
ANY PLAN CHANGES WILL BE SUBJECT  
TO REVIEW AND APPROVAL BY THE  
VILLAGE OF ORLAND PARK STAFF.



PLANT KEY

- TREE DRIPLINE
- PROPOSED SHADE TREE - 2 1/2" Cal. BB  
Hybrid Elm, Hackberry, Honeylocust, Oak, Maple
- PROPOSED ORNAMENTAL TREE 2" Cal. BB  
Serviceberry, Flowering Crabapple
- EXISTING TREE TO REMAIN
- PROPOSED EVERGREEN SHRUB - 18" Spr. BB or container  
Juniper, Yew
- PROPOSED DECIDUOUS SHRUB 18" Spr. BB or container  
Diervilla, Chokeberry, Lilac, Hydrangea, Witchazel, Fothergilla
- EXISTING SHRUB TO REMAIN



R.A.S.MITH, INC. ASSUMES NO RESPONSIBILITY FOR  
DAMAGES, LIABILITY OR COSTS RESULTING FROM  
CHANGES OR ALTERATIONS MADE TO THIS PLAN, WITHOUT  
THE EXPRESSED WRITTEN CONSENT OF R.A.S.MITH, INC.  
ALL COPYRIGHTS TO THESE DRAWINGS ARE RESERVED.  
THEY MAY NOT BE COPIED, CHANGED, OR ASSIGNED TO  
ANY THIRD PARTY IN ANY MANNER WITHOUT OBTAINING  
THE EXPRESSED WRITTEN PERMISSION OF R.A.S.MITH, INC.

**reSmith**  
224 E. BURNHAM AVE. SUITE 102  
MORTDALE, ILLINOIS 60451-5503  
TEL: 708.469.3772  
FAX: 708.469.3773

**Larson Engineering, Inc.**  
141 E. Douglas Road, Suite 208  
Bolingbrook, Illinois 60440  
TEL: 630.341.0540  
FAX: 630.341.0541

**TRIA**  
ARCHITECTURE

ORLAND SCHOOL DISTRICT 135  
2023 ADDITIONS AND RENOVATIONS AT:  
HIGH POINT ELEMENTARY SCHOOL & ORLAND JUNIOR HIGH  
14825 & 14855 WEST AVENUE, ORLAND PARK, IL 60462

PROJECT NUMBER: 11-024	REVISIONS	ADDENDUM # 2/11/2023
PROJECT MANAGER: TKS	DATE	DATE
DRAWN BY: DJB	DATE	DATE
ISSUED FOR BIDDING: 01/02/2023	DATE	DATE



LSP2.02