

TOP OF ROOF:
elev: 41'-6"

3RD FLR:
elev: 21'-11 1/2"

2ND FLR:
elev: 10'-8 3/4"

1ST FLR:
elev: 1'-6"

GRADE:
elev: 0'-0"



BEFORE

FRONT ELEVATION - BUILDING A (similar for all other front units on buildings B,C,D,E,F,G,H)

EXTERIOR FINISH LEGEND:

- | | |
|-----------------------------------------------------|-----------------------------------------------------------|
| 01. CONCRETE STAIR (COORDINATE WITH CIVIL DRAWINGS) | 14. POLYURETHANE FUNCTIONAL VERTICAL LOUVER GABLE VENT |
| 02. 12" DURACAST TAPERED ROUND FIBERGLASS COLUMN | 15. ALUMINUM GUTTER + DOWNSPOUT |
| 03. STANDING METAL ROOFING | 16. CONTINUOUS HIGH DENSITY CEMENT BOARD FOR PAINT FINISH |
| 04. CRAFTSMAN STAINED FIBERGLASS PREHUNG ENTRY DOOR | 17. BAY WINDOW W/ HIGH DENSITY CEMENT BOARD COLOR #1 |
| 05. 4" STONE SILL | 18. FIBERGLASS DECORATIVE GUARDRAIL |
| 06. SOLDIER + ROWLOCK COURSE BRICK COLOR #2 | 19. BAY WINDOW W/ HIGH DENSITY CEMENT BOARD COLOR #2 |
| 07. MODULAR BRICK COLOR #1 | 20. HIGH DENSITY CEMENT BOARD BAND |
| 08. MODULAR BRICK COLOR #2 | 21. STONE HEADER |
| 09. WINDOW | 22. WOOD BRACKET FOR PAINT FINISH |
| 10. HIGH DENSITY CEMENT BOARD SIDING COLOR #1 | 23. SMOOTH RENAISSANCE STONE COLOR #4 |
| 11. HIGH DENSITY CEMENT BOARD SIDING COLOR #2 | 24. DECORATIVE VINYL SHUTTER |
| 12. CEMENT BOARD FASCIA BOARD+TRIM | 25. HIGH DENSITY CEMENT BOARD SIDING COLOR #3 |
| 13. FIBERGLASS SHINGLED COLOR #1 | 26. SOLDIER + ROWLOCK COURSE BRICK COLOR #1 |
| 13a. METAL HANDRAIL - BLACK | 27. ALUMINUM COPING |
| 13b. 24" x 44" NON OPERABLE WINDOW | 28. PRESSURE TREATED GUARDRAIL |



AFTER

FRONT ELEVATION - BUILDING A

GENERAL NOTES: COORDINATE TOP OF FIRST FLOOR AND GRADING WITH CIVIL DRAWINGS

john conrad schiess architect
 400 ashland ave. river forest illinois 60305
 tel. 708.366.1500
 john@jcsarchitect.com

COPYRIGHT: John Conrad Schiess, Architect expressly reserves their common law copyright and other copyrights in these plans. These plans contain original material and ideas. These plans are not to be reproduced changed or copied in any form or manner whatsoever, nor are they to be assigned to any third party, without first obtaining the express written permission and consent of John Conrad Schiess.

Project No: _____

 14 SEPT. 2016 APPEARANCE REVIEW
 Issued for

**TOWNHOMES
 AT
 COLETTE
 HIGHLANDS**
 15608-24
 Park Station Blvd.
 Orland Park, Illinois

Sheet Title
 PROPOSED ELEVATIONS

SK1

Sheet No.

TOP OF ROOF:
elev: 41'-6"

3RD FLR:
elev: 21'-11 1/2"

2ND FLR:
elev: 10'-8 3/4"

1ST FLR:
elev: 1'-6"

GRADE:
elev: 0'-0"



BEFORE

FRONT ELEVATION - BUILDING A (similar for all other front units on buildings B,C,D,E,F,G,H)

TOP OF ROOF:
elev: 41'-6"

3RD FLR:
elev: 20'-9 1/2"

2ND FLR:
elev: 10'-6 3/4"

1ST FLR:
elev: 718.50'

GRADE:
elev: 715.83'



TOP OF ROOF:
elev: 41'-6"

Top of Roof Deck

3RD FLR:
elev: 20'-9 1/2"

2ND FLR:
elev: 10'-6 3/4"

1ST FLR:
elev: 719.50'

GRADE:
elev: 717.50'

TYPE A

TYPE B

TYPE C

TYPE B1

TYPE B1

TYPE C

TYPE B

TYPE A

AFTER

FRONT ELEVATION - BUILDING B

john conrad schiess architect
400 ashland ave. river forest illinois 60305
tel. 708.366.1500
john@jcsarchitect.com

COPYRIGHT: John Conrad Schiess, Architect expressly reserves their common law copyright and other copyrights in these plans. These plans contain original material and ideas. These plans are not to be reproduced changed or copied in any form or manner whatsoever, nor are they to be assigned to any third party, without first obtaining the express written permission and consent of John Conrad Schiess.

Project No:

14 SEPT. 2016 APPEARANCE REVIEW
Issued for

TOWNHOMES
AT
COLETTE
HIGHLANDS
15608-24
Park Station Blvd.
Orland Park, Illinois

Sheet Title
PROPOSED ELEVATIONS

SK2

Sheet No.

TOP OF ROOF:
elev: 41'-6"

3RD FLR:
elev: 21'-11 1/2"

2ND FLR:
elev: 10'-8 3/4"

1ST FLR:
elev: 1'-6"

GRADE:
elev: 0'-0"



BEFORE

○ FRONT ELEVATION - BUILDING A (similar for all other front units on buildings B,C,D,E,F,G,H)

EXTERIOR FINISH LEGEND:

- | | |
|-----------------------------------------------------|-----------------------------------------------------------|
| 01. CONCRETE STOOP | 14. POLYURETHANE FUNCTIONAL VERTICAL LOUVER GABLE VENT |
| 02. 12" DURACAST TAPERED ROUND FIBERGLASS COLUMN | 15. ALUMINUM GUTTER + DOWNSPOUT |
| 03. STANDING METAL ROOFING | 16. COUNTINOUS HIGH DENSITY CEMENT BOARD FOR PAINT FINISH |
| 04. CRAFTSMAN STAINED FIBERGLASS PREHUNG ENTRY DOOR | 17. BAY WINDOW W/ HIGH DENSITY CEMENT BOARD COLOR #1 |
| 05. 4" STONE SILL | 18. FIBERGLASS DECORATIVE GUARDRAIL |
| 06. SOLDIER + ROWLOCK COURSE BRICK COLOR #2 | 19. BAY WINDOW W/ HIGH DENSITY CEMENT BOARD COLOR #2 |
| 07. MODULAR BRICK COLOR #1 | 20. HIGH DENSITY CEMENT BOARD BAND |
| 08. MODULAR BRICK COLOR #2 | 21. STONE HEADER |
| 09. WINDOW | 22. WOOD BRACKET FOR PAINT FINISH |
| 10. HIGH DENSITY CEMENT BOARD SIDING COLOR #1 | 23. SMOOTH RENAISSANCE STONE COLOR #4 |
| 11. HIGH DENSITY CEMENT BOARD SIDING COLOR #2 | 24. DECORATIVE VINYL SHUTTER |
| 12. CEMENT BOARD FASCIA BOARD+TRIM | 25. HIGH DENSITY CEMENT BOARD SIDING COLOR #3 |
| 13. FIBERGLASS SHINGLED COLOR #1 | 26. SOLDIER + ROWLOCK COURSE BRICK COLOR #1 |
| 13a. METAL HANDRAIL - BLACK | 27. ALUMINUM COPING |
| 13b. OVERSIZED GUTTER | 28. PRESSURE TREATED GUARDRAIL |

TOP OF ROOF:
elev: 41'-6"

3RD FLR:
elev: 20'-9 1/2"

2ND FLR:
elev: 10'-6 3/4"

1ST FLR:
elev: 718.22'

GRADE:
elev: 716.22'



TOP OF ROOF:
elev: 41'-6"

Top of Roof Deck

3RD FLR:
elev: 20'-9 1/2"

2ND FLR:
elev: 10'-6 3/4"

1ST FLR:
elev: 717.50'

GRADE:
elev: 715.50'

○ FRONT ELEVATION - BUILDING C

AFTER

GENERAL NOTES: COORDINATE TOP OF FIRST FLOOR AND GRADING WITH CIVIL DRAWINGS

COPYRIGHT: John Conrad Schiess, Architect expressly reserves their common law copyright and other copyrights in these plans. These plans contain original material and ideas. These plans are not to be reproduced changed or copied in any form or manner whatsoever, nor are they to be assigned to any third party, without first obtaining the express written permission and consent of John Conrad Schiess.

Project No: _____

 14 SEPT. 2016 APPEARANCE REVIEW
 Issued for

**TOWNHOMES
 AT
 COLETTE
 HIGHLANDS**
 15608-24
 Park Station Blvd.
 Orland Park, Illinois

Sheet Title
 PROPOSED ELEVATIONS

SK3

Sheet No.

TOP OF ROOF:
elev: 41'-6"

3RD FLR:
elev: 21'-11 1/2"

2ND FLR:
elev: 10'-8 3/4"

1ST FLR:
elev: 1'-6"

GRADE:
elev: 0'-0"



BEFORE

○ FRONT ELEVATION - BUILDING A (similar for all other front units on buildings B,C,D,E,F,G,H)

TOP OF ROOF:
elev: 41'-6"

3RD FLR:
elev: 20'-9 1/2"

2ND FLR:
elev: 10'-6 3/4"

1ST FLR:
elev: 717.83' (D)
718.88' (F)

GRADE:
elev: 717.50' (D)
718.55' (F)



TOP OF ROOF:
elev: 41'-6"

Top of Roof Deck

3RD FLR:
elev: 20'-9 1/2"

2ND FLR:
elev: 10'-6 3/4"

1ST FLR:
elev: 718.55' (D)
718.88' (F)

GRADE:
elev: 718.22' (D)
719.55' (F)

○ FRONT ELEVATION - BUILDING D & F

AFTER

john conrad schiess architect
400 ashland ave. river forest illinois 60305
tel. 708.366.1500 john@jcsarchitect.com

COPYRIGHT: John Conrad Schiess, Architect expressly reserves their common law copyright and other copyrights in these plans. These plans contain original material and ideas. These plans are not to be reproduced changed or copied in any form or manner whatsoever, nor are they to be assigned to any third party, without first obtaining the express written permission and consent of John Conrad Schiess.

Project No:

14 SEPT. 2016 APPEARANCE REVIEW
Issued for

TOWNHOMES
AT
COLETTE
HIGHLANDS
15608-24
Park Station Blvd.
Orland Park, Illinois

Sheet Title
PROPOSED ELEVATIONS

SK4

Sheet No.

TOP OF ROOF:
elev: 41'-6"

3RD FLR:
elev: 21'-11 1/2"

2ND FLR:
elev: 10'-8 3/4"

1ST FLR:
elev: 1'-6"

GRADE:
elev: 0'-0"



BEFORE

FRONT ELEVATION - BUILDING A (similar for all other front units on buildings B,C,D,E,F,G,H)

TOP OF ROOF:
elev: 41'-6"

3RD FLR:
elev: 20'-9 1/2"

2ND FLR:
elev: 10'-6 3/4"

1ST FLR:
elev: 718.55'

GRADE:
elev: 718.22'



TOP OF ROOF:
elev: 41'-6"

Top of Roof Deck

3RD FLR:
elev: 20'-9 1/2"

2ND FLR:
elev: 10'-6 3/4"

1ST FLR:
elev: 718.55'

GRADE:
elev: 717.22'

FRONT ELEVATION - BUILDING E

AFTER

john conrad schiess architect
400 ashland ave. river forest illinois 60305
tel. 708.366.1500
john@jcsarchitect.com

COPYRIGHT: John Conrad Schiess, Architect expressly reserves their common law copyright and other copyrights in these plans. These plans contain original material and ideas. These plans are not to be reproduced changed or copied in any form or manner whatsoever, nor are they to be assigned to any third party, without first obtaining the express written permission and consent of John Conrad Schiess.

Project No:

14 SEPT. 2016 APPEARANCE REVIEW
Issued for

TOWNHOMES
AT
COLETTE
HIGHLANDS
15608-24
Park Station Blvd.
Orland Park, Illinois

Sheet Title
PROPOSED ELEVATIONS

SK5

Sheet No.



BEFORE

○ FRONT ELEVATION - BUILDING A (similar for all other front units on buildings B,C,D,E,F,G,H)

EXTERIOR FINISH LEGEND:

- | | |
|-----------------------------------------------------|-----------------------------------------------------------|
| 01. CONCRETE STOOP | 14. POLYURETHANE FUNCTIONAL VERTICAL LOUVER GABLE VENT |
| 02. 12" DURACAST TAPERED ROUND FIBERGLASS COLUMN | 15. ALUMINUM GUTTER + DOWNSPOUT |
| 03. STANDING METAL ROOFING | 16. CONTINUOUS HIGH DENSITY CEMENT BOARD FOR PAINT FINISH |
| 04. CRAFTSMAN STAINED FIBERGLASS PREHUNG ENTRY DOOR | 17. BAY WINDOW W/ HIGH DENSITY CEMENT BOARD COLOR #1 |
| 05. 4" STONE SILL | 18. FIBERGLASS DECORATIVE GUARDRAIL |
| 06. SOLDIER + ROWLOCK COURSE BRICK COLOR #2 | 19. BAY WINDOW W/ HIGH DENSITY CEMENT BOARD COLOR #2 |
| 07. MODULAR BRICK COLOR #1 | 20. HIGH DENSITY CEMENT BOARD BAND |
| 08. MODULAR BRICK COLOR #2 | 21. STONE HEADER |
| 09. WINDOW | 22. WOOD BRACKET FOR PAINT FINISH |
| 10. HIGH DENSITY CEMENT BOARD SIDING COLOR #1 | 23. SMOOTH RENAISSANCE STONE COLOR #4 |
| 11. HIGH DENSITY CEMENT BOARD SIDING COLOR #2 | 24. DECORATIVE VINYL SHUTTER |
| 12. CEMENT BOARD FASCIA BOARD+TRIM | 25. HIGH DENSITY CEMENT BOARD SIDING COLOR #3 |
| 13. FIBERGLASS SHINGLED COLOR #1 | 26. SOLDIER + ROWLOCK COURSE BRICK COLOR #1 |
| 13a. METAL HANDRAIL - BLACK | 27. ALUMINUM COPING |
| 13b. OVERSIZED GUTTER | 28. PRESSURE TREATED GUARDRAIL |



AFTER

○ FRONT ELEVATION - BUILDING G

GENERAL NOTES: COORDINATE TOP OF FIRST FLOOR AND GRADING WITH CIVIL DRAWINGS

COPYRIGHT: John Conrad Schiess, Architect expressly reserves their common law copyright and other copyrights in these plans. These plans contain original material and ideas. These plans are not to be reproduced changed or copied in any form or manner whatsoever, nor are they to be assigned to any third party, without first obtaining the express written permission and consent of John Conrad Schiess.

Project No: _____

 14 SEPT. 2016 APPEARANCE REVIEW
 Issued for

**TOWNHOMES
 AT
 COLETTE
 HIGHLANDS**
 15608-24
 Park Station Blvd.
 Orland Park, Illinois

Sheet Title
 PROPOSED ELEVATIONS

SK6

Sheet No.

TOP OF ROOF:
elev: 41'-6"

3RD FLR:
elev: 21'-11 1/2"

2ND FLR:
elev: 10'-8 3/4"

1ST FLR:
elev: 1'-6"

GRADE:
elev: 0'-0"



BEFORE

FRONT ELEVATION - BUILDING A (similar for all other front units on buildings B,C,D,E,F,G,H)

EXTERIOR FINISH LEGEND:

- 01. CONCRETE STOOP
- 02. 12" DURACAST TAPERED ROUND FIBERGLASS COLUMN
- 03. STANDING METAL ROOFING
- 04. CRAFTSMAN STAINED FIBERGLASS PREHUNG ENTRY DOOR
- 05. 4" STONE SILL
- 06. SOLDIER + ROWLOCK COURSE BRICK COLOR #2
- 07. MODULAR BRICK COLOR #1
- 08. MODULAR BRICK COLOR #2
- 09. WINDOW
- 10. HIGH DENSITY CEMENT BOARD SIDING COLOR #1
- 11. HIGH DENSITY CEMENT BOARD SIDING COLOR #2
- 12. CEMENT BOARD FASCIA BOARD+TRIM
- 13. FIBERGLASS SHINGLED COLOR #1
- 13a. METAL HANDRAIL - BLACK
- 14. POLYURETHANE FUNCTIONAL VERTICAL LOUVER GABLE VENT
- 15. ALUMINUM GUTTER + DOWNSPOUT
- 16. COUNTINOUS HIGH DENSITY CEMENT BOARD FOR PAINT FINISH
- 17. BAY WINDOW W/ HIGH DENSITY CEMENT BOARD COLOR #1
- 18. FIBERGLASS DECORATIVE GUARDRAIL
- 19. BAY WINDOW W/ HIGH DENSITY CEMENT BOARD COLOR #2
- 20. HIGH DENSITY CEMENT BOARD BAND
- 21. STONE HEADER
- 22. WOOD BRACKET FOR PAINT FINISH
- 23. SMOOTH RENAISSANCE STONE COLOR #4
- 24. DECORATIVE VINYL SHUTTER
- 25. HIGH DENSITY CEMENT BOARD SIDING COLOR #3
- 26. SOLDIER + ROWLOCK COURSE BRICK COLOR #1
- 27. ALUMINUM COPING
- 28. PRESSURE TREATED GUARDRAIL

TOP OF ROOF:
elev: 41'-6"

3RD FLR:
elev: 20'-9 1/2"

2ND FLR:
elev: 10'-6 3/4"

1ST FLR:
elev: 720.9'

GRADE:
elev: 718.23'



TOP OF ROOF:
elev: 41'-6"

Top of Roof Deck

3RD FLR:
elev: 20'-9 1/2"

2ND FLR:
elev: 10'-6 3/4"

1ST FLR:
elev: 725.0'

GRADE:
elev: 724.70'

TYPE A

TYPE B

TYPE C

TYPE B1

TYPE D

TYPE D

TYPE B1

TYPE C

TYPE B

TYPE A

AFTER

FRONT ELEVATION - BUILDING H

GENERAL NOTES: COORDINATE TOP OF FIRST FLOOR AND GRADING WITH CIVIL DRAWINGS

john conrad schiess architect
400 ashland ave. river forest illinois 60305
tel. 708.366.1500
john@jcsarchitect.com

COPYRIGHT: John Conrad Schiess, Architect expressly reserves their common law copyright and other copyrights in these plans. These plans contain original material and ideas. These plans are not to be reproduced changed or copied in any form or manner whatsoever, nor are they to be assigned to any third party, without first obtaining the express written permission and consent of John Conrad Schiess.

Project No:

14 SEPT. 2016 APPEARANCE REVIEW
Issued for

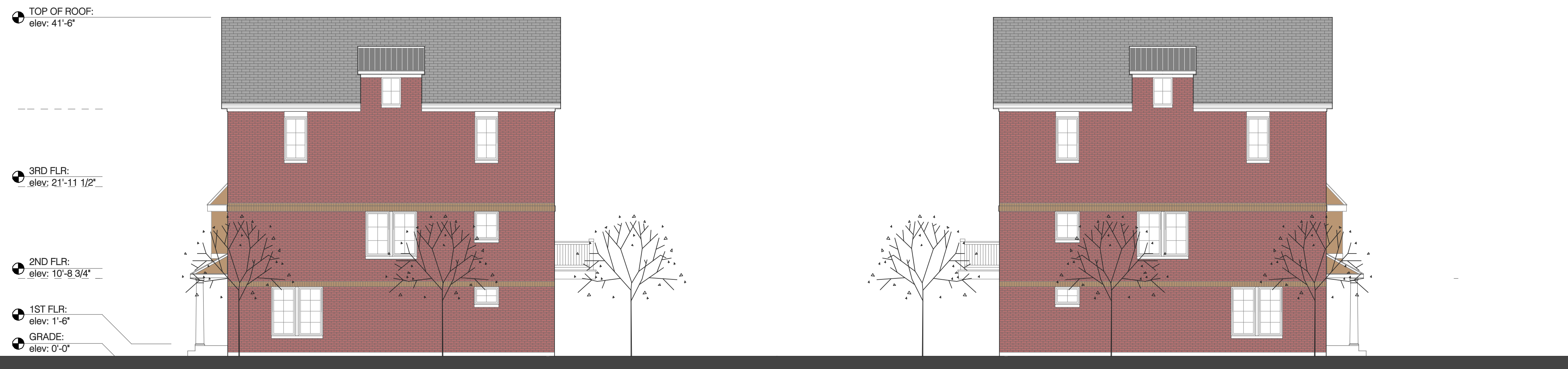
TOWNHOMES
AT
COLETTE
HIGHLANDS
15608-24
Park Station Blvd.
Orland Park, Illinois

Sheet Title
PROPOSED ELEVATIONS

SK7

Sheet No.

BEFORE



SIDE ELEVATION - BUILDING C+D (similar for all other end units on buildings A,B,E,F,G,H)

EXTERIOR FINISH LEGEND:

- | | |
|-----------------------------------------------------|-----------------------------------------------------------|
| 01. CONCRETE STOOP | 14. POLYURETHANE FUNCTIONAL VERTICAL LOUVER GABLE VENT |
| 02. 12" DURACAST TAPERED ROUND FIBERGLASS COLUMN | 15. ALUMINUM GUTTER + DOWNPOUT |
| 03. STANDING METAL ROOFING | 16. CONTINUOUS HIGH DENSITY CEMENT BOARD FOR PAINT FINISH |
| 04. CRAFTSMAN STAINED FIBERGLASS PREHUNG ENTRY DOOR | 17. BAY WINDOW W/ HIGH DENSITY CEMENT BOARD COLOR #1 |
| 05. 4' STONE SILL | 18. FIBERGLASS DECORATIVE GUARDRAIL |
| 06. SOLDIER + ROWLOCK COURSE BRICK COLOR #2 | 19. BAY WINDOW W/ HIGH DENSITY CEMENT BOARD COLOR #2 |
| 07. MODULAR BRICK COLOR #1 | 20. HIGH DENSITY CEMENT BOARD BAND |
| 08. MODULAR BRICK COLOR #2 | 21. STONE HEADER |
| 09. WINDOW | 22. WOOD BRACKET FOR PAINT FINISH |
| 10. HIGH DENSITY CEMENT BOARD SIDING COLOR #1 | 23. SMOOTH RENAISSANCE STONE COLOR #4 |
| 11. HIGH DENSITY CEMENT BOARD SIDING COLOR #2 | 24. DECORATIVE VINYL SHUTTER |
| 12. CEMENT BOARD FASCIA BOARD+TRIM | 25. HIGH DENSITY CEMENT BOARD SIDING COLOR #3 |
| 13. FIBERGLASS SHINGLED COLOR #1 | 26. SOLDIER + ROWLOCK COURSE BRICK COLOR #1 |
| | 27. ALUMINUM COPING |
| | 28. PRESSURE TREATED GUARDRAIL |



AFTER

SIDE ELEVATION - BUILDING C+D (similar for all other end units on buildings A,B,E,F,G,H)

GENERAL NOTES: COORDINATE TOP OF FIRST FLOOR AND GRADING WITH CIVIL DRAWINGS

COPYRIGHT: John Conrad Schiess, Architect expressly reserves their common law copyright and other copyrights in these plans. These plans contain original material and ideas. These plans are not to be reproduced changed or copied in any form or manner whatsoever, nor are they to be assigned to any third party, without first obtaining the express written permission and consent of John Conrad Schiess.

Project No: _____

14 SEPT. 2016 APPEARANCE REVIEW
Issued for

**TOWNHOMES
 AT
 COLETTE
 HIGHLANDS**
 15608-24
 Park Station Blvd.
 Orland Park, Illinois

Sheet Title
 PROPOSED ELEVATIONS

SK8

Sheet No.

COPYRIGHT: John Conrad Schiess, Architect expressly reserves their common law copyright and other copyrights in these plans. These plans contain original material and ideas. These plans are not to be reproduced changed or copied in any form or manner whatsoever, nor are they to be assigned to any third party, without first obtaining the express written permission and consent of John Conrad Schiess.

Project No: _____

 14 SEPT. 2016 APPEARANCE REVIEW
 Issued for

TOWNHOMES
 AT
 COLETTE
 HIGHLANDS
 15608-24
 Park Station Blvd.
 Orland Park, Illinois

Sheet Title
 PROPOSED ELEVATIONS

SK9

Sheet No.

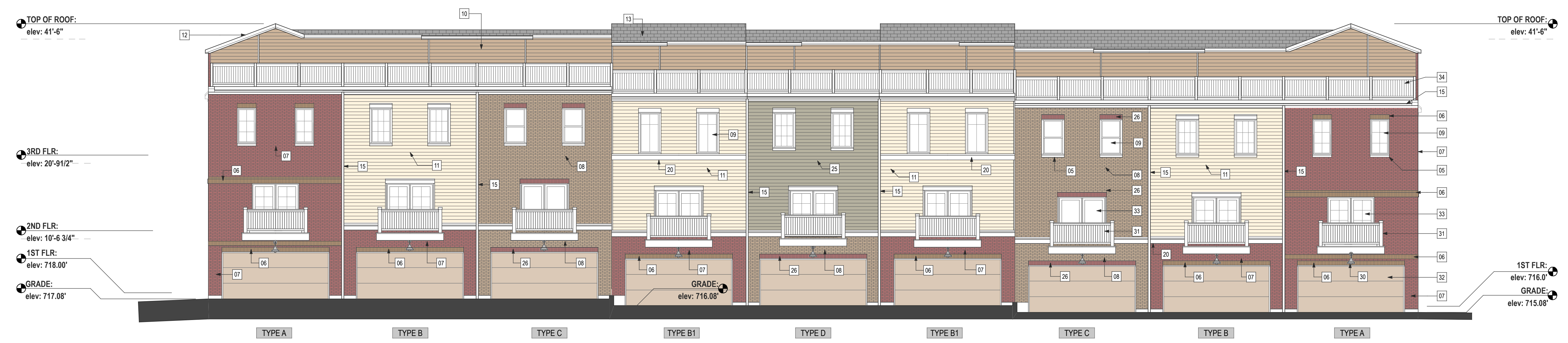


BEFORE

REAR ELEVATION - BUILDING A (similar for all other rear units on buildings B,C,D,E,F,G,H)

EXTERIOR FINISH LEGEND:

- | | |
|-----------------------------------------------------------|------------------------------------------------------|
| 01. CONCRETE STOOP | 17. BAY WINDOW W/ HIGH DENSITY CEMENT BOARD COLOR #1 |
| 02. 12" DURACAST TAPERED ROUND FIBERGLASS COLUMN | 18. FIBERGLASS DECORATIVE GUARDRAIL |
| 03. STANDING METAL ROOFING | 19. BAY WINDOW W/ HIGH DENSITY CEMENT BOARD COLOR #2 |
| 04. CRAFTSMAN STAINED FIBERGLASS PREHUNG ENTRY DOOR | 20. HIGH DENSITY CEMENT BOARD BAND |
| 05. 4" STONE SILL | 21. STONE HEADER |
| 06. SOLDIER + ROWLOCK COURSE BRICK COLOR #2 | 22. WOOD BRACKET FOR PAINT FINISH |
| 07. MODULAR BRICK COLOR #1 | 23. SMOOTH RENAISSANCE STONE COLOR #4 |
| 08. MODULAR BRICK COLOR #2 | 24. DECORATIVE VINYL SHUTTER |
| 09. WINDOW | 25. HIGH DENSITY CEMENT BOARD SIDING COLOR #3 |
| 10. HIGH DENSITY CEMENT BOARD SIDING COLOR #1 | 26. SOLDIER + ROWLOCK COURSE BRICK COLOR #1 |
| 11. HIGH DENSITY CEMENT BOARD SIDING COLOR #2 | 27. ALUMINUM COPING |
| 12. CEMENT BOARD FASCIA BOARD-TRIM | 28. PRESSURE TREATED GUARDRAIL |
| 13. FIBERGLASS SHINGLED COLOR #1 | 29. EXTERIOR DOOR |
| 14. POLYURETHANE FUNCTIONAL VERTICAL LOUVER GABLE VENT | 30. EXTERIOR LIGHT |
| 15. ALUMINUM GUTTER + DOWNSPOUT | 31. CANTILEVERED BALCONY |
| 16. CONTINUOUS HIGH DENSITY CEMENT BOARD FOR PAINT FINISH | 32. OVERHEAD GARAGE DOOR |
| | 33. EXTERIOR SLIDING DOOR |
| | 34. CONT. PRESSURE TREATED GUARDRAIL |



AFTER

REAR ELEVATION - BUILDING A

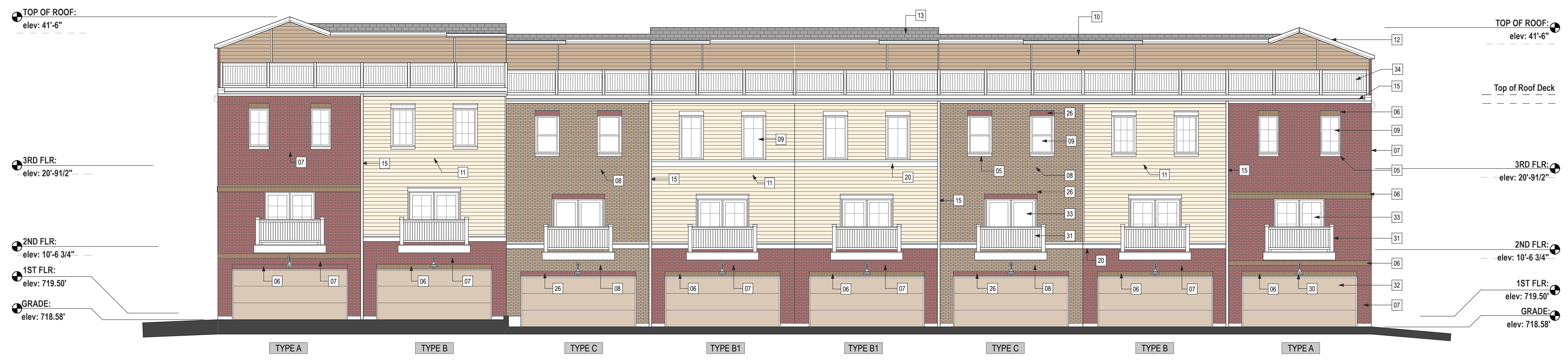
GENERAL NOTES: COORDINATE TOP OF FIRST FLOOR AND GRADING WITH CIVIL DRAWINGS



BEFORE

REAR ELEVATION - BUILDING A (similar for all other rear units on buildings B,C,D,E,F,G,H)

COPYRIGHT: John Conrad Schiess, Architect expressly reserves their common law copyright and other copyrights in these plans. These plans contain original material and ideas. These plans are not to be reproduced changed or copied in any form or manner whatsoever, nor are they to be assigned to any third party, without first obtaining the express written permission and consent of John Conrad Schiess.



AFTER

REAR ELEVATION - BUILDING B

Project No:

 14 SEPT. 2016 APPEARANCE REVIEW
 Issued for

TOWNHOMES
 AT
 COLETTE
 HIGHLANDS
 15608-24
 Park Station Blvd.
 Orland Park, Illinois

Sheet Title
 PROPOSED ELEVATIONS

SK10
 Sheet No.

TOP OF ROOF:
elev: 41'-6"

3RD FLR:
elev: 21'-11 1/2"

2ND FLR:
elev: 10'-8 3/4"

1ST FLR:
elev: 1'-6"

GRADE:
elev: 0'-0"



BEFORE

REAR ELEVATION - BUILDING A (similar for all other rear units on buildings B,C,D,E,F,G,H)

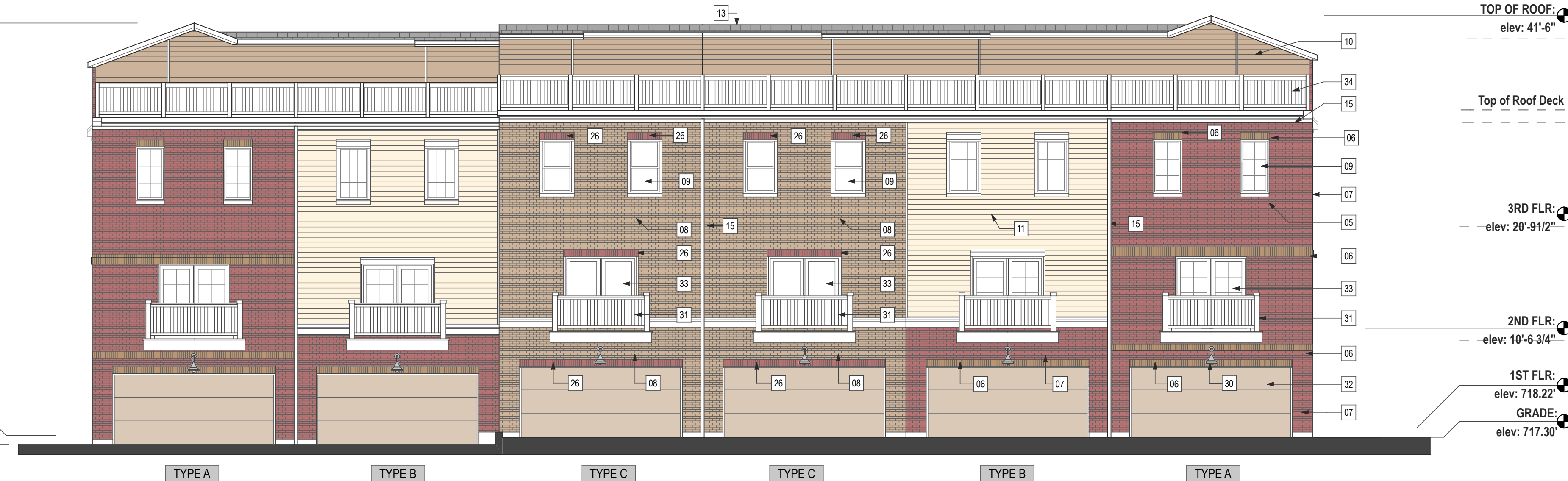
EXTERIOR FINISH LEGEND:

- | | |
|-----------------------------------------------------------|------------------------------------------------------|
| 01. CONCRETE STOOP | 17. BAY WINDOW W/ HIGH DENSITY CEMENT BOARD COLOR #1 |
| 02. 12" DURACAST TAPERED ROUND FIBERGLASS COLUMN | 18. FIBERGLASS DECORATIVE GUARDRAIL |
| 03. STANDING METAL ROOFING | 19. BAY WINDOW W/ HIGH DENSITY CEMENT BOARD COLOR #2 |
| 04. CRAFTSMAN STAINED FIBERGLASS PREHUNG ENTRY DOOR | 20. HIGH DENSITY CEMENT BOARD BAND |
| 05. 4" STONE SILL | 21. STONE HEADER |
| 06. SOLDIER + ROWLOCK COURSE BRICK COLOR #2 | 22. WOOD BRACKET FOR PAINT FINISH |
| 07. MODULAR BRICK COLOR #1 | 23. SMOOTH RENAISSANCE STONE COLOR #4 |
| 08. MODULAR BRICK COLOR #2 | 24. DECORATIVE VINYL SHUTTER |
| 09. WINDOW | 25. HIGH DENSITY CEMENT BOARD SIDING COLOR #3 |
| 10. HIGH DENSITY CEMENT BOARD SIDING COLOR #1 | 26. SOLDIER + ROWLOCK COURSE BRICK COLOR #1 |
| 11. HIGH DENSITY CEMENT BOARD SIDING COLOR #2 | 27. ALUMINIUM COPING |
| 12. CEMENT BOARD FASCIA BOARD+TRIM | 28. PRESSURE TREATED GUARDRAIL |
| 13. FIBERGLASS SHINGLED COLOR #1 | 29. EXTERIOR DOOR |
| 14. POLYURETHANE FUNCTIONAL VERTICAL LOUVER GABLE VENT | 30. EXTERIOR LIGHT |
| 15. ALUMINIUM GUTTER + DOWNSPOUT | 31. CANTILEVERED BALCONY |
| 16. CONTINUOUS HIGH DENSITY CEMENT BOARD FOR PAINT FINISH | 32. OVERHEAD GARAGE DOOR |
| | 33. EXTERIOR SLIDING DOOR |
| | 34. CONT. PRESSURE TREATED GUARDRAIL |

TOP OF ROOF:
elev: 41'-6"

1ST FLR:
elev: 717.50'

GRADE:
elev: 716.58'



AFTER

REAR ELEVATION - BUILDING C

GENERAL NOTES: COORDINATE TOP OF FIRST FLOOR AND GRADING WITH CIVIL DRAWINGS

john conrad schiess architect
400 ashland ave. river forest illinois 60305
tel. 708.366.1500
john@jcsarchitect.com

COPYRIGHT: John Conrad Schiess, Architect expressly reserves their common law copyright and other copyrights in these plans. These plans contain original material and ideas. These plans are not to be reproduced changed or copied in any form or manner whatsoever, nor are they to be assigned to any third party, without first obtaining the express written permission and consent of John Conrad Schiess.

Project No:

14 SEPT. 2016 APPEARANCE REVIEW
Issued for

TOWNHOMES
AT
COLETTE
HIGHLANDS
15608-24
Park Station Blvd.
Orland Park, Illinois

Sheet Title
PROPOSED ELEVATIONS

SK11

Sheet No.

TOP OF ROOF:
 elev: 41'-6"

 3RD FLR:
 elev: 21'-11 1/2"

 2ND FLR:
 elev: 10'-8 3/4"

 1ST FLR:
 elev: 1'-6"

 GRADE:
 elev: 0'-0"



BEFORE

REAR ELEVATION - BUILDING A (similar for all other rear units on buildings B,C,D,E,F,G,H)

TOP OF ROOF:
 elev: 41'-6"

 Top of Roof Deck

 3RD FLR:
 elev: 20'-9 1/2"

 2ND FLR:
 elev: 10'-6 3/4"

 1ST FLR:
 elev: 718.22' (D)
 719.55' (F)

 GRADE:
 elev: 717.30' (D)
 718.63' (F)



TOP OF ROOF:
 elev: 41'-6"

 Top of Roof Deck

 3RD FLR:
 elev: 20'-9 1/2"

 2ND FLR:
 elev: 10'-6 3/4"

 1ST FLR:
 elev: 717.50' (D)
 718.55' (F)

 GRADE:
 elev: 716.58' (D)
 717.63' (F)

REAR ELEVATION - BUILDING D & F

AFTER

john conrad schiess architect
 400 ashland ave. river forest illinois 60305
 tel. 708.366.1500
 john@jcsarchitect.com

COPYRIGHT: John Conrad Schiess, Architect
 expressly reserves their common law copyright
 and other copyrights in these plans. These plans
 contain original material and ideas. These plans
 are not to be reproduced changed or copied in
 any form or manner whatsoever, nor are they to
 be assigned to any third party, without first
 obtaining the express written permission and
 consent of John Conrad Schiess.

Project No:

 14 SEPT. 2016 APPEARANCE REVIEW
 Issued for

**TOWNHOMES
 AT
 COLETTE
 HIGHLANDS**
 15608-24
 Park Station Blvd.
 Orland Park, Illinois

Sheet Title
 PROPOSED ELEVATIONS

SK12

Sheet No.

TOP OF ROOF:
 elev: 41'-6"

 3RD FLR:
 elev: 21'-11 1/2"

 2ND FLR:
 elev: 10'-8 3/4"

 1ST FLR:
 elev: 1'-6"

 GRADE:
 elev: 0'-0"



BEFORE

REAR ELEVATION - BUILDING A (similar for all other rear units on buildings B,C,D,E,F,G,H)



TOP OF ROOF:
 elev: 41'-6"

 Top of Roof Deck

 3RD FLR:
 elev: 20'-9 1/2"

 2ND FLR:
 elev: 10'-6 3/4"

 1ST FLR:
 elev: 718.55'

 GRADE:
 elev: 717.63'

TOP OF ROOF:
 elev: 41'-6"

 Top of Roof Deck

 3RD FLR:
 elev: 20'-9 1/2"

 2ND FLR:
 elev: 10'-6 3/4"

 1ST FLR:
 elev: 719.55'

 GRADE:
 elev: 718.63'

REAR ELEVATION - BUILDING E

AFTER

john conrad schiess architect
 400 ashland ave. river forest illinois 60305
 tel. 708.366.1500
 john@jcsarchitect.com

COPYRIGHT: John Conrad Schiess, Architect
 expressly reserves their common law copyright
 and other copyrights in these plans. These plans
 contain original material and ideas. These plans
 are not to be reproduced changed or copied in
 any form or manner whatsoever, nor are they to
 be assigned to any third party, without first
 obtaining the express written permission and
 consent of John Conrad Schiess.

Project No: _____

 14 SEPT. 2016 APPEARANCE REVIEW
 Issued for

**TOWNHOMES
 AT
 COLETTE
 HIGHLANDS**
 15608-24
 Park Station Blvd.
 Orland Park, Illinois

Sheet Title
 PROPOSED ELEVATIONS

SK13

Sheet No.

COPYRIGHT: John Conrad Schiess, Architect expressly reserves their common law copyright and other copyrights in these plans. These plans contain original material and ideas. These plans are not to be reproduced changed or copied in any form or manner whatsoever, nor are they to be assigned to any third party, without first obtaining the express written permission and consent of John Conrad Schiess.

Project No: _____

 14 SEPT. 2016 APPEARANCE REVIEW
 Issued for

TOWNHOMES AT COLETTE HIGHLANDS
 15608-24 Park Station Blvd. Orland Park, Illinois

Sheet Title
PROPOSED ELEVATIONS

SK14

Sheet No.



BEFORE

REAR ELEVATION - BUILDING A (similar for all other rear units on buildings B,C,D,E,F,G,H)

EXTERIOR FINISH LEGEND:

- | | |
|-----------------------------------------------------------|------------------------------------------------------|
| 01. CONCRETE STOOP | 17. BAY WINDOW W/ HIGH DENSITY CEMENT BOARD COLOR #1 |
| 02. 12" DURACAST TAPERED ROUND FIBERGLASS COLUMN | 18. FIBERGLASS DECORATIVE GUARDRAIL |
| 03. STANDING METAL ROOFING | 19. BAY WINDOW W/ HIGH DENSITY CEMENT BOARD COLOR #2 |
| 04. CRAFTSMAN STAINED FIBERGLASS PREHUNG ENTRY DOOR | 20. HIGH DENSITY CEMENT BOARD BAND |
| 05. 4" STONE SILL | 21. STONE HEADER |
| 06. SOLDIER + ROWLOCK COURSE BRICK COLOR #2 | 22. WOOD BRACKET FOR PAINT FINISH |
| 07. MODULAR BRICK COLOR #1 | 23. SMOOTH RENAISSANCE STONE COLOR #4 |
| 08. MODULAR BRICK COLOR #2 | 24. DECORATIVE VINYL SHUTTER |
| 09. WINDOW | 25. HIGH DENSITY CEMENT BOARD SIDING COLOR #3 |
| 10. HIGH DENSITY CEMENT BOARD SIDING COLOR #1 | 26. SOLDIER + ROWLOCK COURSE BRICK COLOR #1 |
| 11. HIGH DENSITY CEMENT BOARD SIDING COLOR #2 | 27. ALUMINIUM COPING |
| 12. CEMENT BOARD FASCIA BOARD+TRIM | 28. PRESSURE TREATED GUARDRAIL |
| 13. FIBERGLASS SHINGLED COLOR #1 | 29. EXTERIOR DOOR |
| 14. POLYURETHANE FUNCTIONAL VERTICAL LOUVER GABLE VENT | 30. EXTERIOR LIGHT |
| 15. ALUMINIUM GUTTER + DOWNSPOUT | 31. CANTILEVERED BALCONY |
| 16. CONTINUOUS HIGH DENSITY CEMENT BOARD FOR PAINT FINISH | 32. OVERHEAD GARAGE DOOR |
| | 33. EXTERIOR SLIDING DOOR |
| | 34. CONT. PRESSURE TREATED GUARDRAIL |



AFTER

REAR ELEVATION - BUILDING G

GENERAL NOTES: COORDINATE TOP OF FIRST FLOOR AND GRADING WITH CIVIL DRAWINGS

COPYRIGHT: John Conrad Schiess, Architect expressly reserves their common law copyright and other copyrights in these plans. These plans contain original material and ideas. These plans are not to be reproduced changed or copied in any form or manner whatsoever, nor are they to be assigned to any third party, without first obtaining the express written permission and consent of John Conrad Schiess.

Project No: _____

 14 SEPT. 2016 APPEARANCE REVIEW
 Issued for

TOWNHOMES
 AT
 COLETTE
 HIGHLANDS
 15608-24
 Park Station Blvd.
 Orland Park, Illinois

Sheet Title
 PROPOSED ELEVATIONS

SK15

Sheet No.

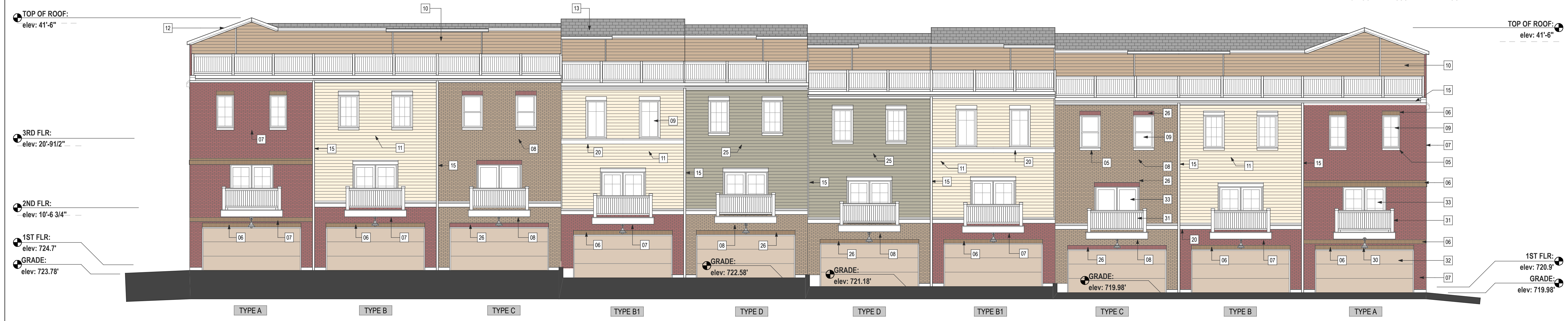


BEFORE

REAR ELEVATION - BUILDING A (similar for all other rear units on buildings B,C,D,E,F,G,H)

EXTERIOR FINISH LEGEND:

- | | |
|-----------------------------------------------------------|------------------------------------------------------|
| 01. CONCRETE STOOP | 17. BAY WINDOW W/ HIGH DENSITY CEMENT BOARD COLOR #1 |
| 02. 12" DURACAST TAPERED ROUND FIBERGLASS COLUMN | 18. FIBERGLASS DECORATIVE GUARDRAIL |
| 03. STANDING METAL ROOFING | 19. BAY WINDOW W/ HIGH DENSITY CEMENT BOARD COLOR #2 |
| 04. CRAFTSMAN STAINED FIBERGLASS PREHUNG ENTRY DOOR | 20. HIGH DENSITY CEMENT BOARD BAND |
| 05. 4" STONE SILL | 21. STONE HEADER |
| 06. SOLDIER + ROWLOCK COURSE BRICK COLOR #2 | 22. WOOD BRACKET FOR PAINT FINISH |
| 07. MODULAR BRICK COLOR #1 | 23. SMOOTH RENAISSANCE STONE COLOR #4 |
| 08. MODULAR BRICK COLOR #2 | 24. DECORATIVE VINYL SHUTTER |
| 09. WINDOW | 25. HIGH DENSITY CEMENT BOARD SIDING COLOR #3 |
| 10. HIGH DENSITY CEMENT BOARD SIDING COLOR #1 | 26. SOLDIER + ROWLOCK COURSE BRICK COLOR #1 |
| 11. HIGH DENSITY CEMENT BOARD SIDING COLOR #2 | 27. ALUMINUM COPING |
| 12. CEMENT BOARD FASCIA BOARD+TRIM | 28. PRESSURE TREATED GUARDRAIL |
| 13. FIBERGLASS SHINGLED COLOR #1 | 29. EXTERIOR DOOR |
| 14. POLYURETHANE FUNCTIONAL VERTICAL LOUVER GABLE VENT | 30. EXTERIOR LIGHT |
| 15. ALUMINUM GUTTER + DOWNSPOUT | 31. CANTILEVERED BALCONY |
| 16. COUNTINOUS HIGH DENSITY CEMENT BOARD FOR PAINT FINISH | 32. OVERHEAD GARAGE DOOR |
| | 33. EXTERIOR SLIDING DOOR |
| | 34. CONT. PRESSURE TREATED GUARDRAIL |



AFTER

REAR ELEVATION - BUILDING H

GENERAL NOTES: COORDINATE TOP OF FIRST FLOOR AND GRADING WITH CIVIL DRAWINGS