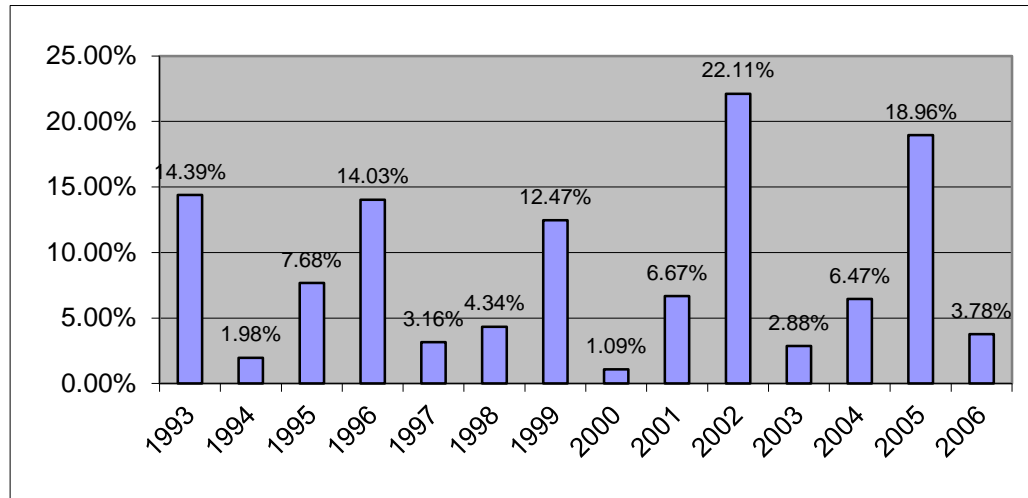


2005 Total Extension	8,532,966
2005 Extension - Net of Debt Service	5,576,158
2006 Total Levy	9,873,311
2006 Levy - Net of Debt Service	5,839,885
Total Increase	1,340,345
% Increase - Total	15.71%
Increase - Net of Debt Service	263,727
% Increase - Net of Debt Service	4.73%

VILLAGE OF ORLAND PARK EAV GROWTH - TAX YEAR 1993 THRU 2006

<u>Tax Year</u>	<u>EAV Growth</u>
1993	14.39%
1994	1.98%
1995	7.68%
1996	14.03%
1997	3.16%
1998	4.34%
1999	12.47%
2000	1.09%
2001	6.67%
2002	22.11%
2003	2.88%
2004	6.47%
2005	18.96%
2006	3.78%
Average	8.57%



**Village of Orland Park
2006 Property Tax Levy Options**

Estimated EAV (6% increase over 2005) \$ 2,187,174,553

	-A- Current FY07 Budget	-B- Increase Special Recreation Levy	-C- Reduce Abatements	-B- & -C-
Tax Extensions:				
General Corporate	\$ 1,645,000	\$ 1,645,000	\$ 1,645,000	\$ 1,645,000
Solid Waste	-	-	-	-
Recreation & Parks	230,000	786,007	230,000	786,007
Open Lands Fund	-	-	-	-
Purchase Agreement	-	-	-	-
FICA	1,314,200	1,314,200	1,314,200	1,314,200
IMRF	1,463,811	1,463,811	1,463,811	1,463,811
Police Pension	986,874	986,874	986,874	986,874
Sub-total	<u>5,639,885</u>	<u>6,195,892</u>	<u>5,639,885</u>	<u>6,195,892</u>
Tax Extensions - Debt Service				
2002B G.O. Village - \$9.5M (412)	844,153	844,153		844,153
2003 G.O. Refunding Bonds (415)	715,913	715,913	715,913	715,913
2004 G.O. Refunding Bonds (416)	998,165	998,165	998,165	998,165
Abated 2004 G.O. Refunding Bonds	(350,300)	(350,300)	-	-
2006 G. O. (418)	970,031	970,031	970,031	970,031
2000 G.O. (041)	849,700	849,700	849,700	849,700
Abate 2000 G.O.	(849,700)	(849,700)	-	-
2001 G.O. (042)	855,465	855,465	855,465	855,465
Sub-total Debt Service	<u>4,033,426</u>	<u>4,033,426</u>	<u>4,389,273</u>	<u>5,233,426</u>
TOTAL VILLAGE LEVY	<u>\$ 9,673,311</u>	<u>\$ 10,229,318</u>	<u>\$ 10,029,158</u>	<u>\$ 11,429,318</u>
Estimated Rate -	0.442	0.468	0.459	0.523
Projected Rebate -	5,100,000	5,390,850	5,285,366	6,023,250

**VILLAGE OF ORLAND PARK
REVENUE SCENARIOS**

	Current FY07 Budget	<u>Reduce Abatements & Rebates</u>		<u>Reduce Abatements & Rebates/Increase Levy</u>	
		25% Reduction	50% Reduction	<small>25% Reduction +</small> \$500,000 increase in levy	<small>50% Reduction +</small> \$500,000 increase in levy
Village Operational Levy	5,639,885	5,639,885	5,639,885	6,139,885	6,139,885
Debt Service Levy	4,033,426	4,333,426	4,633,426	4,333,426	4,633,426
TOTAL VILLAGE LEVY	\$ 9,673,311	\$ 9,973,311	\$ 10,273,311	\$ 10,473,311	\$ 10,773,311
INCREASE IN TOTAL LEVY		300,000	600,000	800,000	1,100,000
DECREASE IN REBATE		1,158,049	2,392,983	960,424	2,261,233
TOTAL ADDITIONAL REVENUE		1,458,049	2,992,983	1,760,424	3,361,233
PROJECTED REBATE	5,100,000	3,941,951	2,707,017	4,139,576	2,838,767
ESTIMATED RATE	0.442	0.456	0.470	0.479	0.493

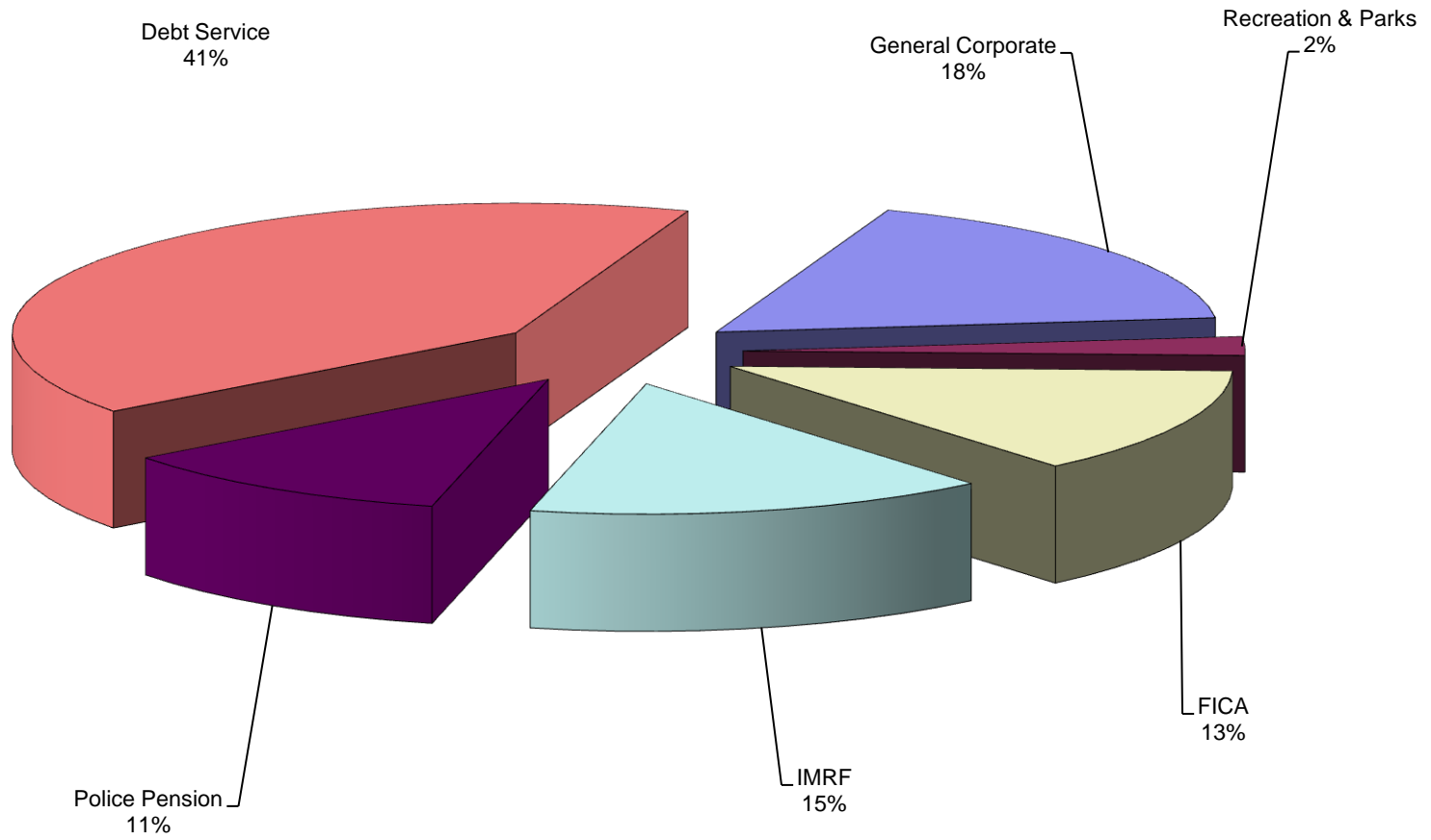
**VILLAGE OF ORLAND PARK
FISCAL YEAR 2008
TAX LEVY - 2007**

DESCRIPTION	Preliminary 2007	% Change	Preliminary 2006	% Change	Final 2005	% Change	Final 2004	% Change	Final 2003
% Change	5.00%		3.78%		18.96%		6.47%		2.88%
Equalized Assessed Valuation	\$ 2,296,533,281		\$ 2,187,174,553		\$ 2,107,443,850		\$ 1,771,533,962		\$ 1,663,932,057
Final Extended Rate - Village Only			0.469		0.4060		0.4830		0.4750
Tax Rates:									
General Corporate	0.0861	7.88%	0.0798	2.21%	0.0781	-15.94%	0.0929	-8.75%	0.1018
Recreation & Parks	0.0100	-4.76%	0.0105	-3.65%	0.0109	-15.94%	0.0130	-6.07%	0.0138
FICA	0.0596	-0.83%	0.0601	1.41%	0.0593	-10.21%	0.0660	-2.07%	0.0674
IMRF	0.0575	-14.15%	0.0669	-0.18%	0.0671	-1.00%	0.0677	23.97%	0.0546
Police Pension	0.0501	0.73%	0.0497	18.33%	0.0420	-0.81%	0.0423	-13.63%	0.0490
Sub-total	<u>0.2632</u>		<u>0.2670</u>		<u>0.2573</u>		<u>0.2819</u>		<u>0.2866</u>
Tax Rates - Debt Service:									
2002B G.O. Village - \$9.5M	0.0367	-4.96%	0.0386	-3.49%	0.0400	-16.27%	0.0478	-6.42%	0.0510
2003 G.O. Refunding Bonds	0.0312	-4.72%	0.0327	-3.58%	0.0339	-15.87%	0.0404	0.00%	0.0429
2004 G.O. Refunding Bonds	0.0435	-4.76%	0.0456	140.38%	0.0190	-16.35%	0.0227	0.00%	0.0000
Abated 2004 G.O. Refunding Bonds	-0.0154	-3.76%	-0.0160	0.00%	0.0000	0.00%	0.0000	0.00%	0.0000
2006 G. O. (418)	0.0421	-5.13%	0.0444	0.00%	0.0000	0.00%	0.0000	0.00%	0.0000
2007 G. O. (419)	0.0589	0.00%	0.0000	0.00%	0.0000	0.00%	0.0000	0.00%	0.0000
Abated 2007 G.O. Bonds	-0.0589	0.00%	0.0000	0.00%	0.0000	0.00%	0.0000	0.00%	0.0000
1998 G.O. - \$9.95M	0.0000	0.00%	0.0000	-100.00%	0.0283	10.39%	0.0256	-6.07%	0.0273
Abated 1998 G.O.	0.0000	0.00%	0.0000	-100.00%	-0.0283	10.39%	-0.0256	-6.07%	-0.0273
2000 G.O. Village - \$15M	0.0368	-5.18%	0.0388	-3.80%	0.0404	71.72%	0.0235	166.88%	0.0088
Abate 2000 G.O.	-0.0368	-5.18%	-0.0388	-3.80%	-0.0404	0.00%	0.0000	0.00%	0.0000
2001 G.O. - \$10M	0.0371	-5.07%	0.0391	-3.89%	0.0407	-16.60%	0.0488	50.90%	0.0323
Sub-total Debt Service	<u>0.1751</u>		<u>0.1844</u>		<u>0.1336</u>		<u>0.1831</u>		<u>0.1706</u>
TOTAL VILLAGE RATE	<u>0.4383</u>	<u>-2.91%</u>	<u>0.4514</u>	<u>15.49%</u>	<u>0.3909</u>	<u>-15.94%</u>	<u>0.4650</u>	<u>1.70%</u>	<u>0.4572</u>
Library									
Library	0.1568	0.95%	0.1553	-13.33%	0.1792	3.00%	0.1740	4.01%	0.1673
2002A G.O. Library \$20M	0.0749	1.12%	0.0740	-18.28%	0.0906	1.31%	0.0894	4.18%	0.0858
2005A G.O. Library Note \$4.05M (417)	0.0000	0.00%	0.0000	-100.00%	0.2410	0.00%	0.0000	0.00%	0.0000
TOTAL LIBRARY RATE	<u>0.2316</u>	<u>1.01%</u>	<u>0.2293</u>	<u>-55.10%</u>	<u>0.5108</u>	<u>93.91%</u>	<u>0.2634</u>	<u>4.07%</u>	<u>0.2531</u>
TOTAL RATE - VILLAGE & LIBRARY	<u>0.6699</u>	<u>-1.59%</u>	<u>0.6807</u>	<u>-24.50%</u>	<u>0.9016</u>	<u>23.78%</u>	<u>0.7284</u>	<u>2.54%</u>	<u>0.7103</u>

**VILLAGE OF ORLAND PARK
FISCAL YEAR 2008
TAX LEVY - 2007**

DESCRIPTION	Preliminary 2007	%	Preliminary 2006	%	Final 2005	%	Final 2004	%	Final 2003
		Change		Change		Change		Change	
Tax Extensions:									
General Corporate	1,976,574		\$ 1,745,000		\$ 1,645,000		\$ 1,645,000		\$ 1,693,195
Recreation & Parks	230,000		230,000		230,000		230,000		230,000
FICA	1,368,522		1,314,200		1,248,667		1,168,975		1,121,237
IMRF	1,319,448		1,463,811		1,413,051		1,199,826		909,084
Police Pension	1,149,516		1,086,874		885,000		750,000		815,658
Sub-total	<u>6,044,060</u>		<u>5,839,885</u>		<u>5,421,718</u>		<u>4,993,801</u>		<u>4,769,174</u>
Tax Extensions - Debt Service									
2002B G.O. Village - \$9.5M (412)	842,353		844,153		842,778	0.299	846,153		849,278
2003 G.O. Refunding Bonds (415)	716,238		715,913		715,450	0.254	714,850		714,113
2004 G.O. Refunding Bonds (416)	998,215		998,165		400,115	0.142	402,065		-
Abated 2004 G.O. Refunding Bonds	(354,000)		(350,300)		-		-		-
2006 G.O. (418)	966,233		970,031		-		-		-
2007 G.O. (419)	1,351,606		1,184,861		-		-		-
Abated 2007 G.O.	(1,351,606)		(1,184,861)		-		-		-
1998 G.O. (040)	-		-		595,650		453,573		453,573
Abated 1998 G.O.	-		-		(595,650)		(453,573)		(453,573)
2000 G.O. (041)	846,000		849,700		851,100		416,625		146,625
Abate 2000 G.O.	(846,000)		(849,700)		(851,100)		-		-
2001 G.O. (042)	852,665		855,465		857,665	0.305	864,465		538,065
Sub-total Debt Service	<u>4,021,703</u>		<u>4,033,426</u>		<u>2,816,008</u>	1.000	<u>3,244,158</u>		<u>2,839,148</u>
TOTAL VILLAGE LEVY	<u>\$ 10,065,763</u>		<u>\$ 9,873,311</u>		<u>\$ 8,237,726</u>		<u>\$ 8,237,959</u>	8.28%	<u>\$ 7,608,322</u>
Library									
Library	3600436		3,396,638		3,174,428		3,081,969		2,783,037
2002A G.O. Library \$20M (411)	1,637,333		1,619,183		1,604,833		1,584,133		1,428,183
Abated 2002A G.O.	-		(82,505)		(100,000)		-		-
2005A G.O. Library Note \$4.05M (417)	-		-		4,268,925		-		-
Abated 2005A G.O.	-		-		(500,000)		-		-
TOTAL LIBRARY LEVY	<u>\$ 5,237,769</u>		<u>\$ 4,933,316</u>		<u>\$ 8,448,186</u>		<u>\$ 4,666,102</u>	10.80%	<u>\$ 4,211,220</u>
TOTAL LEVY - VILLAGE & LIBRARY	<u>\$ 15,303,531</u>		<u>\$ 14,806,626</u>		<u>\$ 16,685,911</u>		<u>\$ 12,904,060</u>	9.18%	<u>\$ 11,819,542</u>

VILLAGE OF ORLAND PARK
FISCAL YEAR 2007
PROPERTY TAX LEVY - 2006



General Corporate	1,745,000
Recreation & Parks	230,000
FICA	1,314,200
IMRF	1,463,811
Police Pension	1,086,874
Debt Service	4,033,426