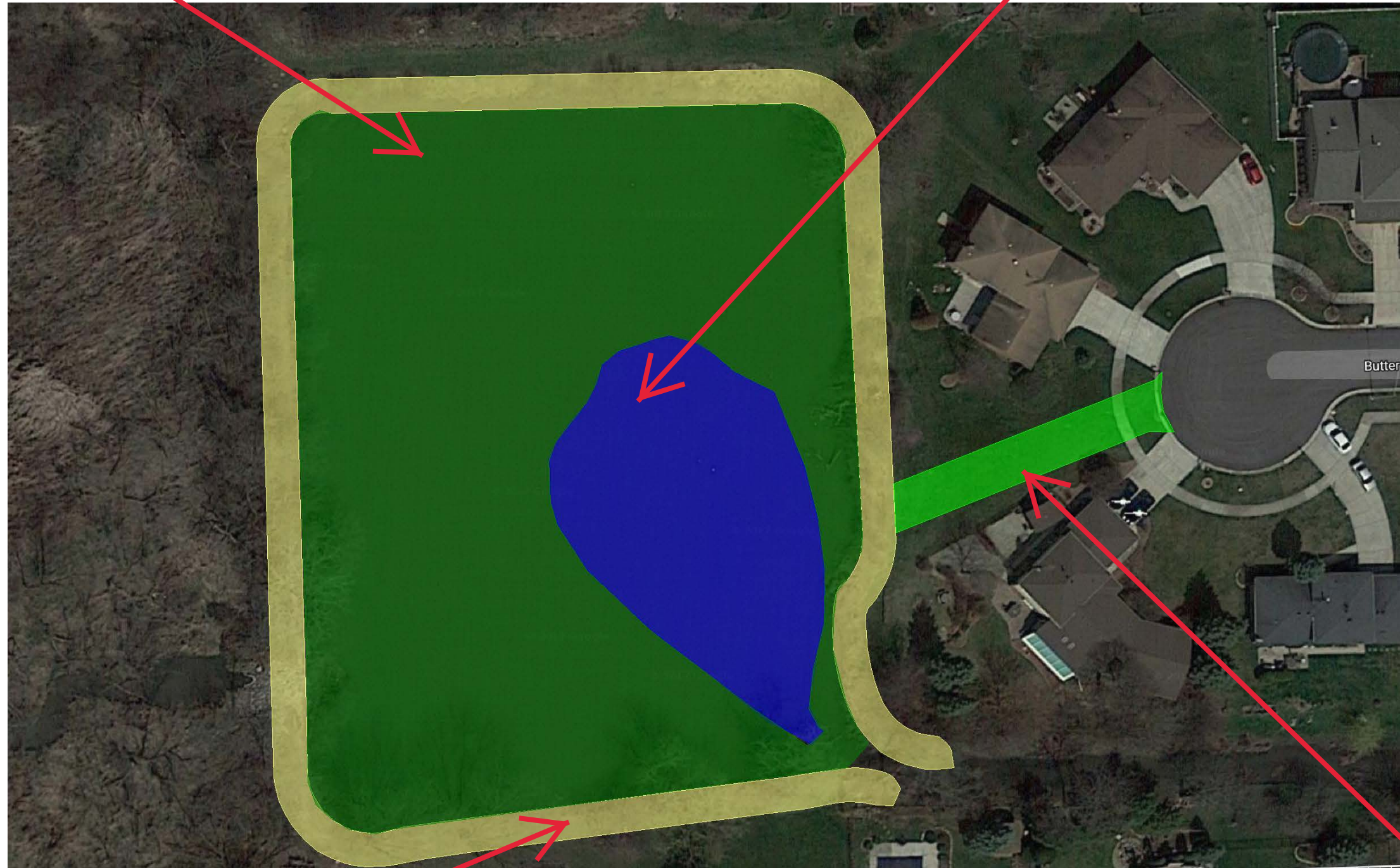


WETLAND PLANTING (SHALLOW EMERGENT ZONE)

OPEN WATER (UP TO 8.00 FEET DEEP)



SLOPE GRADING & RESTORATION (UPLAND PRAIRIE)

CONSTRUCTION ACCESS



V3 Construction Group, Ltd.
 7325 Janes Avenue
 Woodridge, IL 60517
 630.724.9200 phone
 630.724.9202 fax
 www.v3co.com

BUTTERFIELD POND - CONCEPT EXHIBIT

Notes:

TAF

06-04-2018