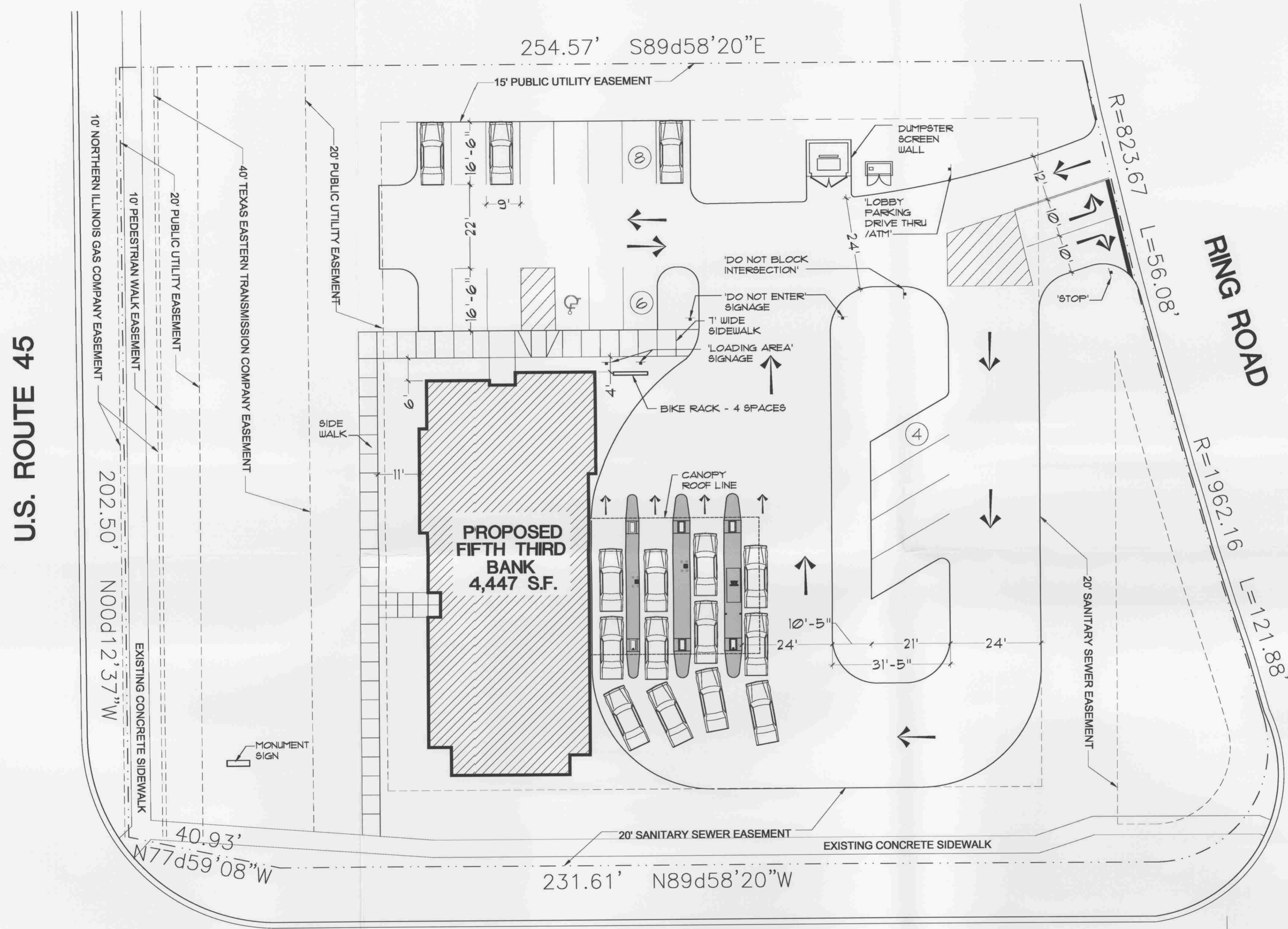
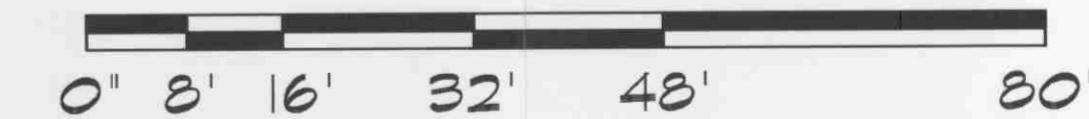


SITE ANALYSIS	
- PROPOSED SITE	
BUILDING AREA	: 58,910 S.F.
ACRES	: 1.35
LOT COVERAGE	: 24,088 S.F.
% OF LOT COVERED	: .40
BUILDING	: 7 OFFICE BLDG.
	: 4,447 S.F.
PARKING REQUIRED (Section 6-306)	: 15 REGULAR SPACES
PARKING PROVIDED	: 17 REGULAR SPACES
	: 1 HANDICAP SPACE



WEST CENTRAL ENTRANCE MAGAZINE



BOARD APPROVED
CASE NO. 007-0591.2
DATE 12-17-07
W/CONDITIONS
W/O CONDITIONS



FIFTH THIRD BANK
ORLAND PARK
US ROUTE 45 & WEST CENTRAL ENTRANCE MAGAZINE

CP-16
PRELIMINARY SITE PLAN
REVISED 12/11/07 SCALE: 1/16"=1'-0"



07027