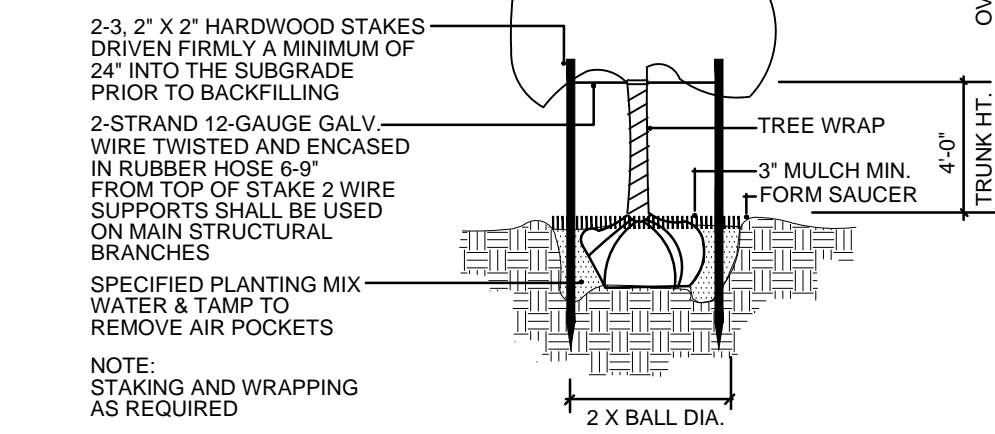


PLANTING DETAILS

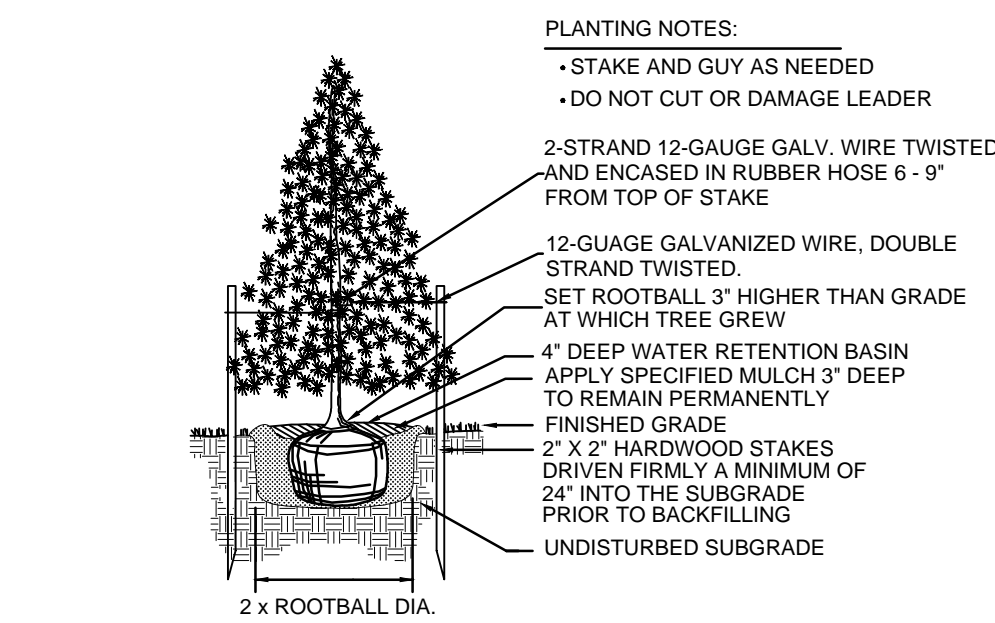
PLANTING NOTES:

- PLANT SO THAT TOP OF ROOT BALL IS EVEN WITH FINISHED GRADE
- STAKE TO FIRST BRANCHES AS NECESSARY FOR FIRM SUPPORT
- STAKING WIRE SHALL NOT TOUCH OR RUB ADJACENT TRUNKS OR BRANCHES



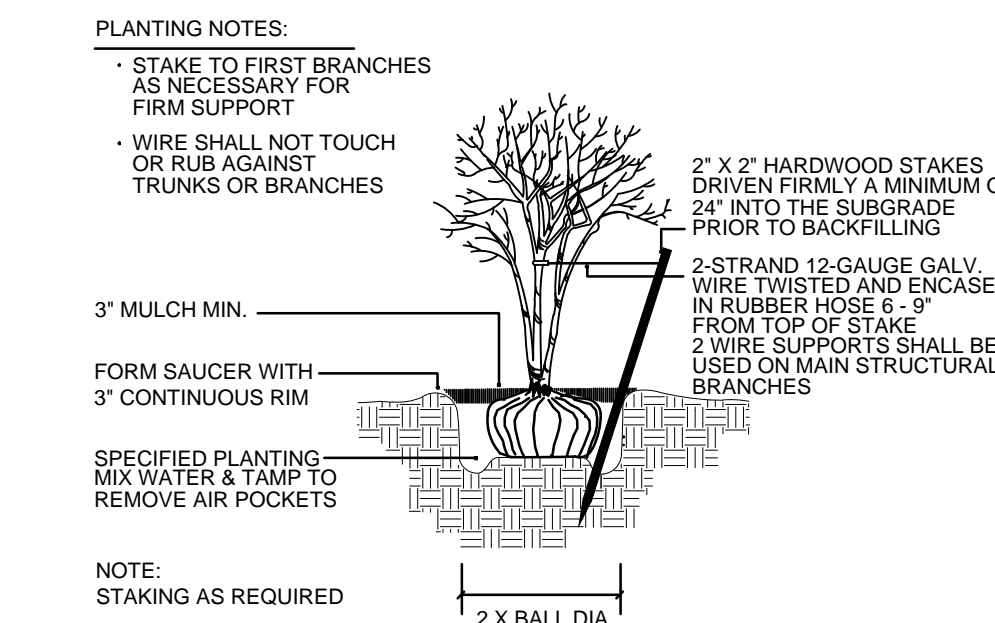
TREE PLANTING & STAKING

NOT TO SCALE



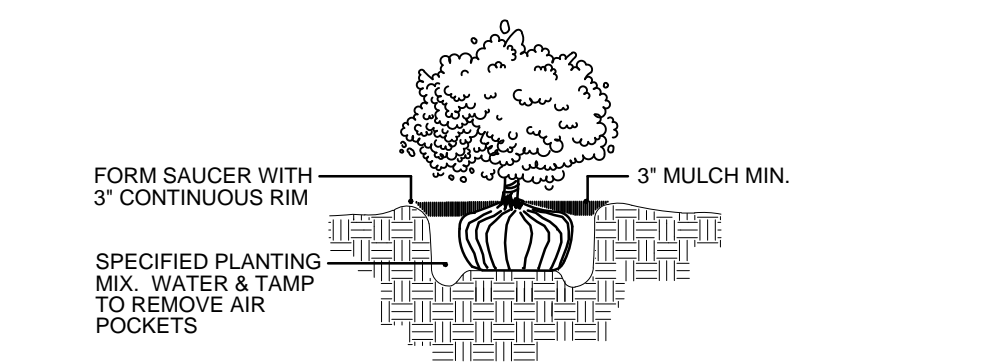
EVERGREEN TREE PLANTING

NOT TO SCALE



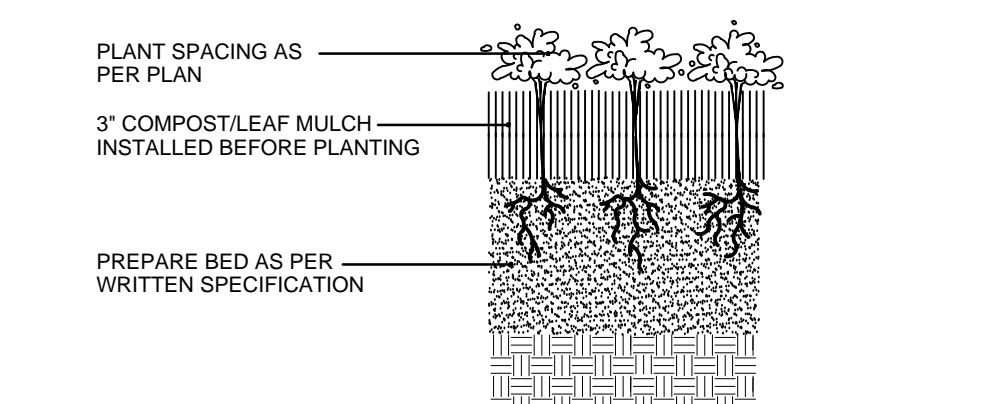
MULTI-TRUNK TREE STAKING

NOT TO SCALE



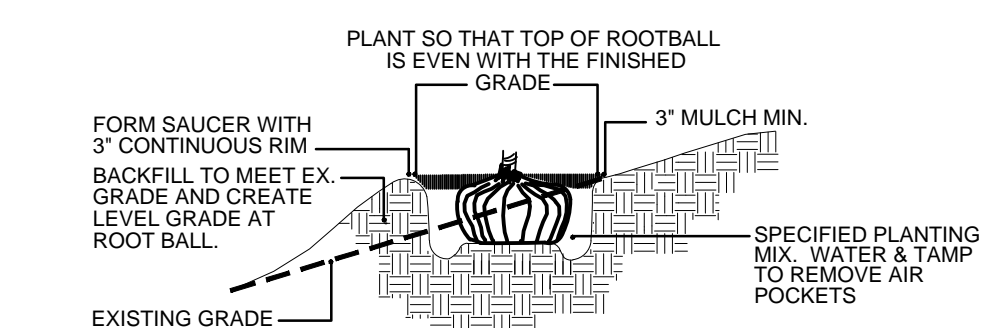
SHRUB PLANTING

NOT TO SCALE



PERENNIAL PLANTING

NOT TO SCALE



HILLSIDE PLANTING

NOT TO SCALE

GENERAL LANDSCAPE NOTES

- CONTRACTOR SHALL OBTAIN ALL NECESSARY PERMITS REQUIRED. ALL CONSTRUCTION SHALL CONFORM TO APPLICABLE STANDARDS AND CODES.
- CALL J.U.L.I.E. UTILITY LOCATING SERVICE (TEL 800.892.0123), 48 HOURS PRIOR TO THE START OF ANY DIGGING.
- GENERAL PLANT NOTES:
 - ALL PLANT MATERIAL SHALL CONFORM IN SIZE AND GRADE IN ACCORDANCE WITH AMERICAN STANDARD FOR NURSERY STOCK.
 - ALL PLANT MATERIAL SHALL BE MAINTAINED ALIVE, HEALTHY, AND FREE FROM DISEASE AND PESTS.
 - ALL NEW PLANT MATERIAL SHALL BE FROM A LOCAL SOURCE WHENEVER POSSIBLE (LESS THAN 50 MILES).
 - PLANTS SHALL BE ALLOWED TO GROW IN THEIR NATURAL FORM / HABIT. PLANTS SHALL NOT BE PRUNED/HEDGED UNLESS ABSOLUTELY NECESSARY (DUE TO VISIBILITY OR HAZARD OBSTRUCTION).
 - ALL LANDSCAPED AREAS SHALL BE FREE OF WEEDS, LITTER, AND SIMILAR SIGNS OF DEFERRED MAINTENANCE.
 - MAINTENANCE AND CARE OF PLANT MATERIAL SHALL INCLUDE, BUT NOT BE LIMITED TO, WATERING, FERTILIZING (IF NECESSARY), DEAD-HEADING, WEEDING, AND MULCHING.
- LOCATIONS OF PROPOSED PLANT MATERIAL MAY BE ADJUSTED AT TIME OF INSTALLATION DUE TO FINAL ENGINEERING AND FINAL LOCATION OF SITE UTILITIES.
- THE LANDSCAPE CONTRACTOR IS RESPONSIBLE FOR PROVIDING AND SPREADING TOPSOIL (6\"-12\" DEEP), FINE GRADING, AND PREPARATION OF ALL LAWN AND LANDSCAPE AREAS. ALL SOILS SHALL BE FREE OF CONSTRUCTION DEBRIS, PRIOR TO INSTALLING ANY PLANT MATERIAL.
- PRIOR TO SPREADING TOPSOIL, THE LANDSCAPE CONTRACTOR SHALL INSPECT AND ACCEPT ALL BASE GRADES. ANY DEVIATION FROM GRADES INDICATED ON THE GRADING PLAN SHALL BE CORRECTED BEFORE PLACING ANY TOPSOIL.
- ALL SHRUB, GROUND COVER, PERENNIAL, AND ANNUAL PLANTING BEDS SHALL BE PREPARED WITH A SOIL AMENDMENT MIX - 1/3 TOPSOIL, 1/3 MUSHROOM COMPOST, AND 1/3 TORPEDO SAND. MATERIAL SHALL BE ROTO-TILLED JUST PRIOR TO THE INSTALLATION OF PLANT MATERIAL.
- ALL PLANTING ISLANDS SHALL BE MOUNDED TO A CENTER HEIGHT OF TWELVE INCHES (12\").
- ALL PLANTING BEDS ADJACENT TO LAWN AREAS SHALL HAVE A SPADED EDGE BORDER, UNLESS METAL OR OTHER BORDER IS SPECIFIED.
- ALL PLANTING BED AREAS SHALL MAINTAIN A MAX. 3\" DEEP LAYER OF SHREDDED HARDWOOD MULCH (COLOR: NON-DYED, BROWN).
- LANDSCAPE CONTRACTOR SHALL COORDINATE PLANTING SCHEDULE WITH LANDSCAPE MAINTENANCE CONTRACTOR, TO ENSURE PROPER WATERING OF PLANTED AND SODDED AREAS AFTER INITIAL INSTALLATION.
- LANDSCAPE CONTRACTOR SHALL COORDINATE WORK WITH OTHER CONTRACTORS ON SITE TO MINIMIZE ANY REDO OF COMPLETED LANDSCAPE WORK AND DAMAGE TO PLANT MATERIAL.
- CONTRACTOR SHALL BE RESPONSIBLE FOR HIS/HER OWN LAYOUT WORK. UPON REQUEST, LANDSCAPE ARCHITECT SHALL BE AVAILABLE TO ASSIST/APPROVE CONTRACTOR LAYOUT.
- EVERY ATTEMPT HAS BEEN MADE TO DEPICT ALL EXISTING UTILITY LINES. CONTRACTOR SHALL USE PRECAUTION WHEN DIGGING. CONTRACTOR SHALL MAKE THEMSELVES THOROUGHLY FAMILIAR WITH ALL UNDERGROUND UTILITY LOCATIONS PRIOR TO ANY DIGGING, VERIFYING LOCATIONS AND DEPTHS OF ALL UTILITIES.
- IT IS THE LANDSCAPE CONTRACTOR'S RESPONSIBILITY TO VISIT THE SITE PRIOR TO BID SUBMITTAL, TO BECOME FAMILIAR WITH EXISTING CONDITIONS AT THE SITE.
- PLANT LIST QUANTITIES PROVIDED AT TIME OF FINAL PLANS ARE APPROXIMATIONS. CONTRACTORS ARE RESPONSIBLE FOR COMPLETING THEIR OWN QUANTITY TAKE-OFFS. IF A DISCREPANCY IS FOUND BETWEEN THE PLAN AND THE PLANT LIST, THEN THE PLAN SHALL PREVAIL.
- PLANT SUBSTITUTIONS ARE ALLOWED DUE TO PLANT AVAILABILITY OR PLANTING TIME OF YEAR, ONLY WITH THE PRIOR CONSENT OF THE LANDSCAPE ARCHITECT. IF SUBSTITUTIONS ARE MADE WITHOUT PRIOR CONSENT, THE LANDSCAPE ARCHITECT MAINTAINS THE RIGHT TO REJECT MATERIAL IN THE FIELD, AT THE COST TO THE CONTRACTOR.
- CONTRACTOR TO PROVIDE TEST OF EXISTING AND IMPORTED SOILS PER SPECIFICATIONS. PLANTING SOIL SHALL BE AMENDED PER SPECIFICATIONS.
- CONTRACTOR SHALL NOTIFY LANDSCAPE ARCHITECT IF AREAS OF POOR DRAINAGE OR OTHER UNUSUAL SUBSURFACE CONDITIONS ARE ENCOUNTERED DURING EXCAVATION FOR PLANTING PITS.
- ALL TURF SHALL BE KENTUCKY BLUEGRASS BLEND SOD (MINERAL, NOT PEAT), UNLESS OTHERWISE NOTED ON THE PLAN.
- CONTRACTOR SHALL RESTORE LAWN AREAS THAT HAVE REMAINED PARTIALLY INTACT, TOP DRESSING WITH SOIL, SCARIFYING, AND SEEDING TO FORM A SMOOTH, FULL, EVEN LAWN, FREE OF BARE SPOTS, INDENTATIONS, AND WEEDS.
- LANDSCAPE DETAILS SHOWN ARE FOR DESIGN INTENT ONLY. LANDSCAPE ARCHITECT ASSUMES NO LIABILITY. CONTRACTOR IS RESPONSIBLE FOR ERECTING AND INSTALLING PROPERLY BUILT AMENITIES PER CODE, PER SITE CONDITIONS (FINAL GRADING & UTILITY LOCATIONS), AND PER AREA CLIMATE CONDITIONS. ALL LANDSCAPE SITE DETAILS FOR STRUCTURES AND FOOTINGS SHALL BE REVIEWED & APPROVED BY A STRUCTURAL ENGINEER.
- CONTRACTOR INSTALLATION BIDS SHALL INCLUDE A ONE-YEAR WARRANTY ON ALL PLANT MATERIAL, IN PERPETUITY.
- (IF APPLICABLE) CONTRACTOR INSTALLATION BIDS SHALL INCLUDE A THREE-YEAR MONITORING AND MAINTENANCE PROGRAM ON ALL NATURALIZED DETENTION AREAS.

PROJECT TEAM

DEVELOPER:

NET3 REAL ESTATE
2803 BUTTERFIELD ROAD, SUITE 310
OAK BROOK, IL 60523
TEL (678) 409-3413

CONTACT: JENNIFER BERK

ARCHITECT:

RICHARD L. BOWEN + ASSOCIATES INC.
13000 SHAKER BOULEVARD
CLEVELAND, OH 44120
TEL (216) 377-3850

CONTACT: MELANIE LEWIS

CIVIL ENGINEER:

ADVANTAGE CONSULTING ENGINEERS
80 MAIN STREET, SUITE 17
LEMONT, IL 60439
TEL (630) 520-2467

CONTACT: BILL ZALEWSKI

ECOLOGIST:

ECOLOGY + VISION, LLC
P.O. BOX 98
LELAND, IL 60531
TEL (815) 981-8003

CONTACT: JENNA WHALEN / ANDY STAHR

LANDSCAPE ARCHITECT:

DICKSON DESIGN STUDIO, INC.
526 SKYLINE DRIVE
ALGONQUIN, IL 60102
TEL (847) 878-4019

CONTACT: SHARON DICKSON

SHEET KEY

L0.1 PROJECT TEAM

GENERAL LANDSCAPE NOTES

PLANTING DETAILS (GENERAL)

L0.2 BIO-SWALE PLANT LISTS

BIO-SWALE SPECIFICATIONS

L1.0 TREE PRESERVATION & REMOVAL PLAN

L2.0 PLANT & MATERIALS LIST (GENERAL)

PLANT COUNT CALCULATIONS

LANDSCAPE PLAN



dickson design
STUDIO

526 SKYLINE DRIVE
ALGONQUIN IL 60102
847 878 4019

CLIENT NAME AND ADDRESS

NET3, LLC

OAK BROOK, IL

PLAN DATE

JUNE 1, 2016

REVISIONS

1.	PER WATER MAIN 6/30/16
2.	PER VILL COMMENTS 7/18/16
3.	PER VILL COMMENTS 7/19/16
4.	PER BASIN 8/19/16
5.	
6.	
7.	
8.	
9.	
10.	

PROJECT NAME AND SHEET TITLE

**COMMERCIAL
DEVELOPMENT**
7170 W. 159TH STREET
ORLAND PARK, IL

FINAL LANDSCAPE PLAN

SHEET NUMBER

L0.1

BIO-SWALE PLANT LISTS

Transitional Buffer Seed Mix (Dry-Mesic Soils)

MIX STATISTICS													
Number of Native Species in Mix	2												
Native FQI	2.8												
Native Mean C Value	4.0												
Native Mean W Value	5.0												
National Wetland Category	UPL												
Total Lbs of Native Seed	6.5												
Seeds per Square Foot	178.1												
Percent of Mix (by Seed Count) Requiring Stratification	0.0%												
Acres to be Planted	3,180.00												

Grasses, Sedges, & Rushes														
CODE	SCIENTIFIC NAME	COMMON NAME	C-VALUE	W-VALUE	WETNESS	HEIGHT Min-Max Typical	BLOOM COLOR	BLOOM TIME A M J J A S O	SEEDS/OZ	TOTAL OZ	TOTAL LBS	% OF MIX by Weight by Seed Count	GERMINATION	TOP SOW
BOUCUR	<i>Bouteloua curtipendula</i>	Side-oats Grama	8	5	UPL	1.5-2.5'	2	N/A						
BOUDAB	<i>Bouteloua doctyloides</i> 'BOWIE'	Bowie Buffalo Grass	0	5	UPL	3'-8"	0.5	N/A						
Grass/Sedge Subtotals									6,500	100.00%	100.00%			
Mix TOTALS									6,500	100.00%	100.00%			

Mesic Prairie Seed Mix (Mesic Soils)

MIX STATISTICS													
Number of Native Species in Mix	34												
Native FQI	33.8												
Native Mean C Value	5.8												
Native Mean W Value	2.5												
National Wetland Category	FACU4												
Total Lbs of Native Seed	4.5												
Seeds per Square Foot	181.1												
Percent of Mix (by Seed Count) Requiring Stratification	58.7%												
Square Feet to be Planted	6,625.00												

Grasses, Sedges, & Rushes														
CODE	SCIENTIFIC NAME	COMMON NAME	C-VALUE	W-VALUE	WETNESS	HEIGHT Min-Max Typical	BLOOM COLOR	BLOOM TIME A M J J A S O	SEEDS/OZ	TOTAL OZ	TOTAL LBS	% OF MIX by Weight by Seed Count	GERMINATION	TOP SOW
BOUCUR	<i>Bouteloua curtipendula</i>	Side-oats Grama	8	5	UPL	1.5-2.5'	2	N/A						
COBCK	<i>Carex bicknellii</i>	Copper-shouldered Oval Sedge	10	3	FACU	1.5-2.5'	2	N/A						
COBREV	<i>Carex brevior</i>	Plains Oval Sedge	4	0	FAC	1-3'	2	N/A						
CMOLE	<i>Carex molesta</i>	Field Oval Sedge	2	0	FAC	1.2-5'	2	N/A						
ELCAN	<i>Elymus canadensis</i>	Canada Wild Rye	4	3	FACU	3-5'	5	N/A						
JUNNT	<i>Juncus interior</i>	Inland Rush	6	0	FAC	1-2'	2	N/A						
PANVIR	<i>Panicum virgatum</i>	Switch Grass	5	0	FAC	3-6'	4	N/A						
SCHSCO	<i>Schizachyrium scoparium</i>	Little Bluestem	5	3	FACU	2-3'	3	N/A						
Grass/Sedge Subtotals									2,504	55.40%	49.55%			

Wildflowers														
CODE	SCIENTIFIC NAME	COMMON NAME	C-VALUE	W-VALUE	WETNESS	HEIGHT Min-Max Typical	BLOOM COLOR	BLOOM TIME A M J J A S O	SEEDS/OZ	TOTAL OZ	TOTAL LBS	% OF MIX by Weight by Seed Count	GERMINATION	TOP SOW
ALLCER	<i>Allium cernuum</i>	Nodding Onion	7	3	FACU	1-2'	1.5	Purple						
ASCLUB	<i>Asclepias tuberosa</i>	Butterfly Weed	7	5	UPL	1.2-5'	2	Orange						
BAPALB	<i>Baptisia alba</i>	White Wild Indigo	8	3	FACU	3-6'	4	White						
CHAFAS	<i>Chamaecrista fasciculata</i>	Partridge Pea	5	3	FACU	6"-2'	2	Yellow						
COBPA	<i>Carex pedunculata</i>	Prairie Careopsis	6	5	UPL	1.2-5'	2	Yellow						
DALPUR	<i>Dalea purpurea</i>	Purple Prairie Clover	9	5	UPL	1-3'	2	Purple						
ECHPAL	<i>Echinacea pallida</i>	Pale Purple Coneflower	8	5	UPL	2-3'	3	Purple						
ECHPUR	<i>Echinacea purpurea</i>	Purple Coneflower	3	5	UPL	2-5'	4	Purple						
ERYFLC	<i>Eryngium yuccifolium</i>	Rattlesnake Master	9	0	FAC	2-5'	4	White						
HELPAU	<i>Helianthus pauciflorus</i>	Stiff Sunflower	8	5	UPL	2-5'	4	Yellow						
HELHEL	<i>Helopsis helianthoides</i>	Early Sunflower	5	3	FACU	3-5'	5	Yellow						
LESCAP	<i>Lespedeza capitata</i>	Round-headed Bush Clover	4	3	FACU	2-5'	4	Green						
LIAPFC	<i>Liatris pycnostachya</i>	Prairie Blazing Star	8	0	FAC	2-4'	4	Purple						
MONFIS	<i>Monarda fistulosa</i>	Wild Bergamot	4	3	FACU	2.5-4'	4	Purple						
PARINT	<i>Parthenium integrifolium</i>	Wild Quinine	8	5	UPL	2-3.5'	3	White						
PENDIG	<i>Penstemon digitalis</i>	Foxglove Beardtongue	4	0	FAC	2-3'	3	White						
PXCVIR	<i>Pycnanthemum virginianum</i>	Virginia Mountain Mint	5	-3	FACW	1-4'	3	White						
RATFRN	<i>Ratibida pinnata</i>	Yellow Coneflower	4	5	UPL	2-4'	4	Yellow						
RUDHIR	<i>Rudbeckia hirta</i>	Black-eyed Susan	1	3	FACU	2-3'	2	Yellow						
RUDSUB	<i>Rudbeckia subtomentosa</i>	Sweet Black-eyed Susan	9	3	FACU	3-6'	5	Yellow						
SILLAC	<i>Silphium laciniatum</i>	Compass Plant	5	5	UPL	6-12"	8	Yellow						
SOLRIG	<i>Solidago rigida</i>	Stiff Goldenrod	4	3	FACU	2-5'	4	Yellow						
SYMLAE	<i>Symphoricarum laeve</i>	Smooth Blue Aster	9	3	FACU	1.5-3'	3	Blue						
SYMNOV	<i>Symphoricarum novae-angliae</i>	New England Aster	4	-3	FACW	3-5'	4	Purple						
TRAOHI	<i>Tradescantia ohiensis</i>	Ohio Spiderwort	2	3	FACU	2-4'	3	Blue						
ZIZAUR	<i>Zizia aurea</i>	Golden Alexanders	7	0	FAC	1.2-5'	2	Yellow						
Wildflower Subtotals									2,016	44.60%	50.45%			
Mix TOTALS									4,520	100.00%	100.00%			

BIO-SWALE SPECIFICATIONS

REFER TO MONITORING & MAINTENANCE PLAN ("M&M")

Dry-Bottom Detention Basin Seed Mix (Mesic-Wet Soils at the Bottom of Basins or Swales)

MIX STATISTICS													
Number of Native Species in Mix	46												
Native FQI	32.6												
Native Mean C Value	4.8												
Native Mean W Value	.10												
National Wetland Category	FAC+												
Lbs./Acre of Native Seed	330.8												
Seeds per Square Foot	330.8												
Percent of Mix (by Seed Count) Requiring Stratification	59.0%												

Grasses, Sedges, & Rushes														
CODE	SCIENTIFIC NAME	COMMON NAME	C-VALUE	W-VALUE	WETNESS	HEIGHT Min-Max Typical	BLOOM COLOR	BLOOM TIME A M J J A S O	SEEDS/OZ	OZ/ACRE	LB/ACRE	% OF MIX by Weight by Seed Count	GERMINATION	TOP SOW
ANDGER	<i>Andropogon gerardi</i>	Big Bluestem	5	0	FAC	6-8'	7	N/A						
COBEBB	<i>Carex bebbii</i>	Bebb's Oval Sedge	6	-5	OBL	1-3'	2	N/A						
COBREV	<i>Carex brevior</i>	Plains Oval Sedge	4	0	FAC	1-3'	2	N/A						
COBRES	<i>Carex cristata</i>	Crested Oval Sedge	4	-3	FACW	2-4'	3	N/A						
COHYST	<i>Carex hystrix</i>	Priscupine Sedge	5	-5	OBL	1.2-5.5'	2	N/A						
CMOLE	<i>Carex molesta</i>	Field Oval Sedge	2	0	FAC	1.2-5'	2	N/A						
CMOCOP	<i>Carex scoparia</i>	Lance-fruited Oval Sedge	7	-3	FACW	1-3'	2	N/A						
CMVULP	<i>Carex vulpinoidea</i>	Brown Fox Sedge	2	-3	FACW	1.5-3.5'	3	N/A						
ELPAL	<i>Elymus pallens</i>	Great Spike Rush	2	-5	OBL	1.8-5.5'	2	N/A						
ELVCAN	<i>Elymus canadensis</i>	Canada Wild Rye	4	3	FACU	3-5'	5	N/A						
ELVIR	<i>Elymus virginicus</i>	Virginia Wild Rye	4	-3	FACW	2.5-4'	4	N/A						
JUNDUJ	<i>Juncus dudleyi</i>	Dudley's Rush	4	-3	FACW	1.2-5.2'	2	N/A						
PANVIR	<i>Panicum virgatum</i>	Switch Grass	5	0	FAC	3-6'	4	N/A						
SCHSCO	<i>Schizachyrium scoparium</i>	Little Bluestem	5	3	FACU	2-3'	3	N/A						
SCIATR	<i>Scirpus atrovirens</i>	Dark-green Bulrush	4	-5	OBL	2-6'	5	N/A						
SCICYP	<i>Scirpus cyperinus</i>	Wood Grass	6	-5	OBL	3-5'	5	N/A						
SONNUT	<i>Sorghastrum nutans</i>	Indian Grass	5	3	FACU	3-7'	6	N/A						
Grass/Sedge Subtotals									20,844	69.48%	64.94%			

Wildflowers														
CODE	SCIENTIFIC NAME	COMMON NAME	C-VALUE	W-VALUE	WETNESS	HEIGHT Min-Max Typical	BLOOM COLOR	BLOOM TIME A M J J A S O	SEEDS/OZ	OZ/ACRE	LB/ACRE	% OF MIX by Weight by Seed Count	GERMINATION	TOP SOW
ALLCER	<i>Allium cernuum</i>	Nodding Onion	7	3	FACU	1-2'	1.5	Purple						
ASCNIC	<i>Asclepias incarnata</i>	Swamp Milkweed	4	-5	OBL	3-6'	4	Pink						
CHAFAS	<i>Chamaecrista fasciculata</i>	Partridge Pea	5	3	FACU	6"-2'	2	Yellow						
CORTRI	<i>Cornus tristis</i>	Tall Cornelis	5	0	FAC	3-8'	7	Yellow						
DESCAA	<i>Desmodium canadense</i>	Shoestring Tick	4	3	FACU	3-6'	4	Purple						
ECHPUR	<i>Echinacea purpurea</i>	Purple Coneflower	3	5	UPL	2-5'	4	Purple						
ERYWUC	<i>Eryngium yuccifolium</i>	Rattlesnake Master	9	0	FAC	2-5'	4	White						
EUPPFR	<i>Eupatorium perfoliatum</i>	Boneset	4	-5	OBL	3-4'	4	White						
EUTGRA	<i>Euthamia graminifolia</i>	Grass-leaved Goldenrod	4	-3	FACW	2-4'	3	Yellow						
EUTMAC	<i>Eutrochium maculatum</i>	Spotted Joe Pye Weed	4	-5	OBL	3-6'	5	Pink						
HELAUT	<i>Helianthus autumnalis</i>	Sneezeweed	5	-3	FACW	2-5'	4	Yellow						
KUHEUP	<i>Kuhnia eupatorioides</i>	Fake Boneset	6	5	UPL	1.3-5'	3	Cream						
LIAPFC	<i>Liatris pycnostachya</i>	Prairie Blazing Star	8	0	FAC	2-4'	4	Purple						
LIASPI	<i>Liatris spicata</i>	Marsh Blazing Star	6	0	FAC	2-5'	5	Purple						
MONFIS	<i>Monarda fistulosa</i>	Wild Bergamot	4	3	FACU	2.5-4'	4	Purple						
PENDIG	<i>Penstemon digitalis</i>	Foxglove Beardtongue	4	0	FAC	2-3'	3	White						
PXCVIR	<i>Pycnanthemum virginianum</i>	Virginia Mountain Mint	5	-3	FACW	1-4'	3	White						
RUDHIR	<i>Rudbeckia hirta</i>	Black-eyed Susan	1	3	FACU	2-3'	2	Yellow						
RUDSUB	<i>Rudbeckia subtomentosa</i>	Sweet Black-eyed Susan	9	3	FACU	3-6'	5	Yellow						
RUDTRI	<i>Rudbeckia triloba</i>	Brown-eyed Susan	3	3	FACU	2-6'	5	Yellow						
SILPER	<i>Silphium perfoliatum</i>	Cup Plant	5	-3	FACW	6-10"	8	Yellow						
SOLRID	<i>Solidago rigidula</i>	Ridged Goldenrod	7	-5	OBL	2-4'	3	Yellow						
SOLRIG	<i>Solidago rigida</i>	Stiff Goldenrod	4	3	FACU	2-5'	4	Yellow						
SYMNOV	<i>Symphoricarum novae-angliae</i>	New England Aster	4	-3	FACW	3-5'	4	Purple						
THADAK	<i>Thalictrum dasycarpum</i>	Purple Meadow Rue	5	-3	FACW	3-7'	6	Cream						
VERHAS	<i>Verbena hastata</i>	Blue Vervain	4	-3	FACW	2-6'	5	Blue						
VERFAS	<i>Verbena fasciculata</i>	Common Ironweed	5	-3	FACW	3-6'	6	Purple						

TREE INVENTORY AND SUMMARY

NOTES!

- ALL OFFSITE, EXISTING TREES SHALL BE PRESERVED.
- TREE SURVEY & INVENTORY WAS COMPLETED BY: BOLLINGER ENVIRONMENTAL, INC. (DOWNERS GROVE, IL - TEL 630.968.1960)

Tree #	DBH (inches)	Scientific Name	Common Name	Condition (1-6)	Outcome	Replacements*
1	3"	Malus	Crabapple	3	Preserve	—
2	3"	Malus	Crabapple	3	Preserve	—
3	4"	Malus	Crabapple	4	REMOVE	exempt
4	4"	Pyrus	Pear	4	REMOVE	exempt
5	4"	Pyrus	Pear	4	REMOVE	exempt
6	4"	Pyrus	Pear	6	REMOVE	exempt
7	4"	Pyrus	Pear	4	REMOVE	exempt
8	3"	Malus	Crabapple	4	REMOVE	exempt
9	4"	Pyrus	Pear	4	REMOVE	exempt
10	3"	Malus	Crabapple	4	REMOVE	exempt
11	3"	Malus	Crabapple	4	REMOVE	exempt
12	10"	Pyrus	Pear	3	Preserve	—
13	5"	Tilia americana	Basswood	4	REMOVE	exempt
14	6"	Tilia americana	Basswood	4	REMOVE	exempt
15	10"	Tilia americana	Basswood	3	Preserve	—

* Per Village Code, Tree Replacement Standards:
Trees rated by a certified arborist as "poor" or "dead" are exempt from mitigation requirements

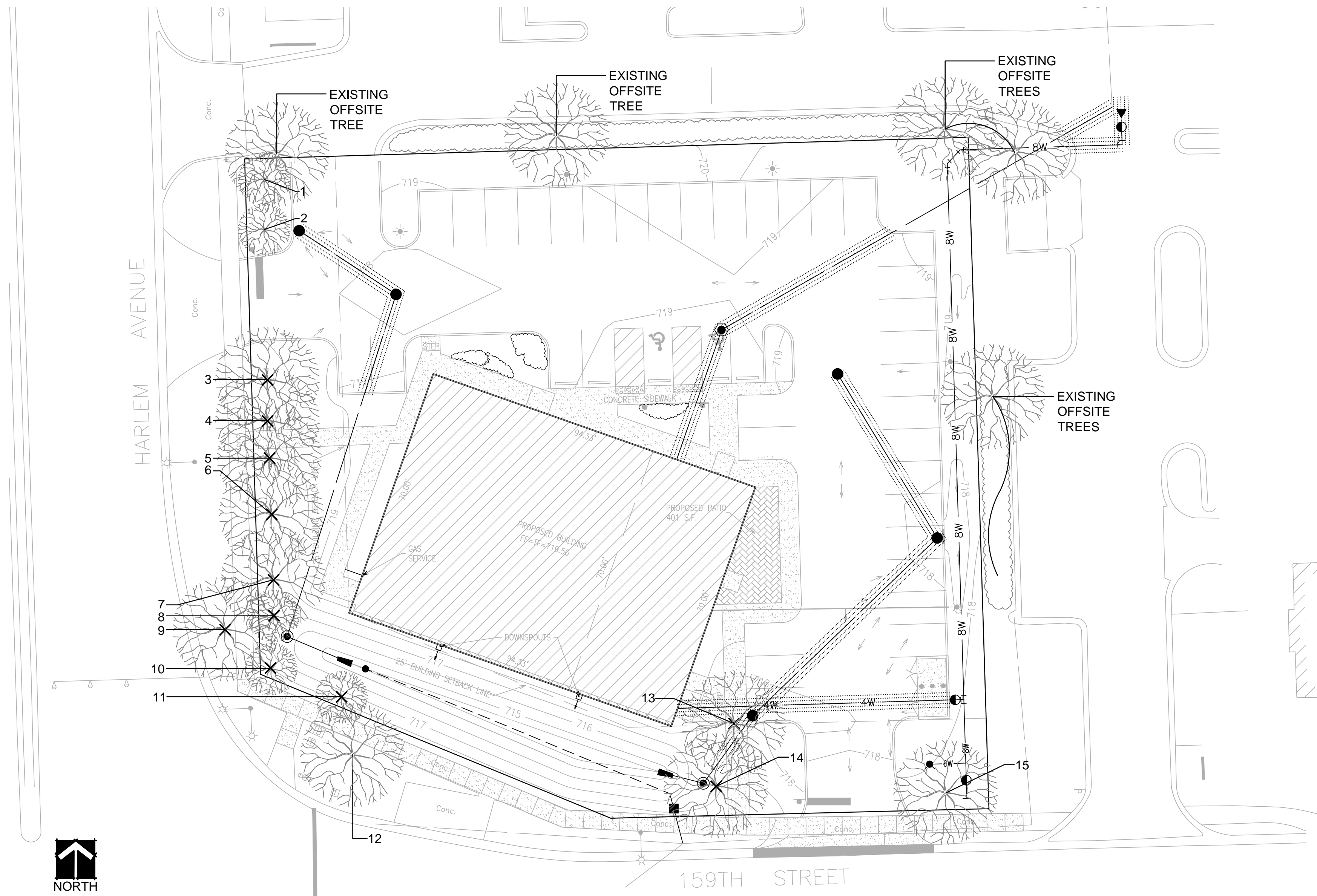
RATING SYSTEM:

CONDITION / FORM:

- 1 EXCELLENT
- 2 ABOVE AVERAGE
- 3 TYPICAL CONDITION
- 4 POOR CONDITION
- 5 POOR / WORST CONDITION
- 6 DEAD

SYMBOLS KEY

X EXISTING TREES TO BE REMOVED
(INDICATED WITH "X" OVER TREE SYMBOL)



EXISTING TREE SURVEY & PROPOSED SITE PLAN

SCALE: 1" = 20'-0"

NOTES!

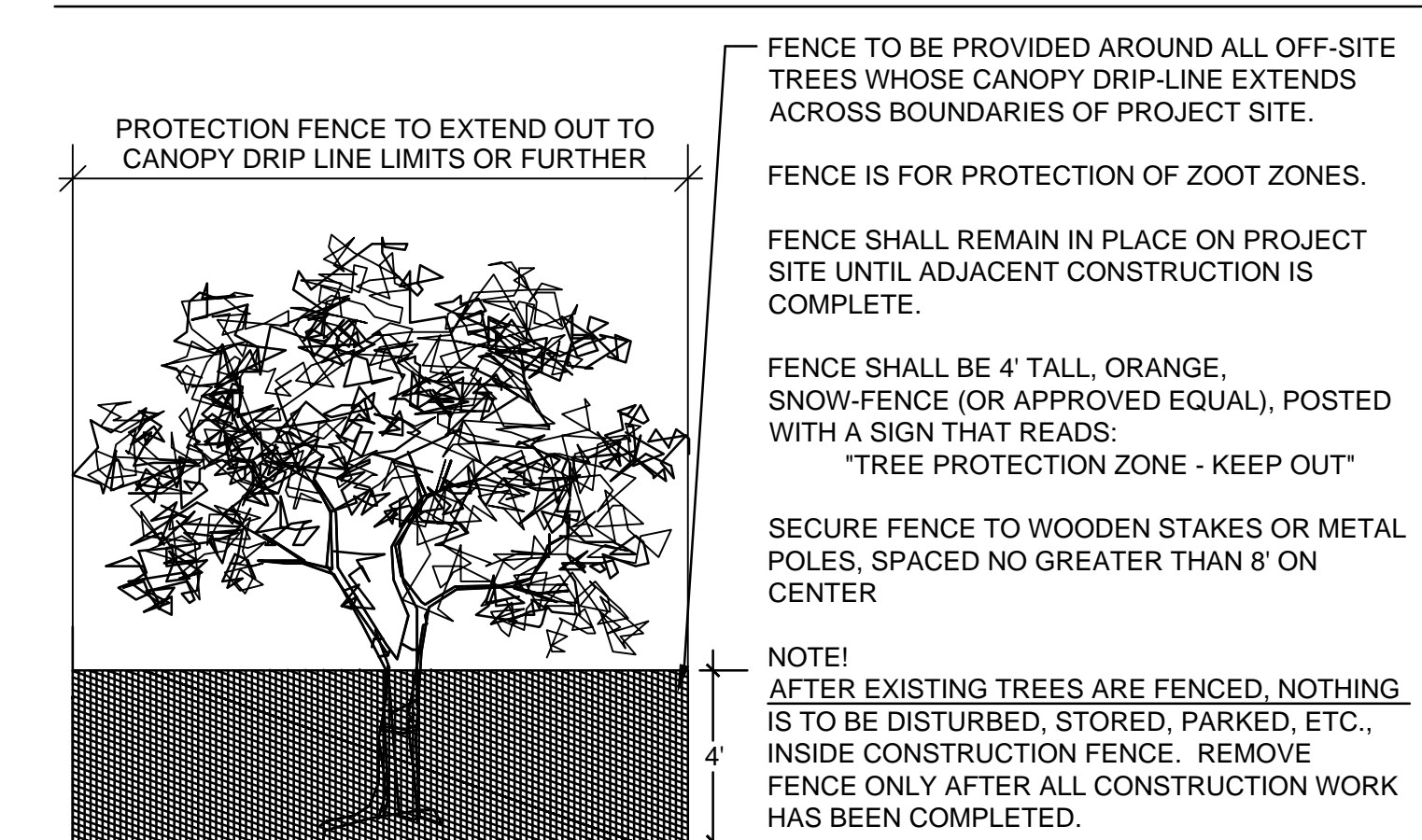
- EXISTING TREES SHOWN TO REMAIN SHALL BE PRESERVED TO THE BEST EXTENT POSSIBLE, PENDING FINAL SITE PLAN, FINAL CIVIL ENGINEERING, AND/OR ANY UNFORESEEN ISSUES.
- PRIOR TO COMMENCING ANY CONSTRUCTION, ALL EXISTING TREES TO BE PRESERVED SHALL HAVE TREE PROTECTION FENCING ERECTED (SEE DETAIL). PROTECTION FENCING SHALL REMAIN INTACT UNTIL ALL CONSTRUCTION ACTIVITIES ONSITE HAVE BEEN COMPLETED.

NOTES

TREE PRESERVATION:

- A. **ALL WORK MUST BE PERFORMED ACCORDING TO THE APPROVED TREE PRESERVATION PLAN. IT IS STRONGLY RECOMMENDED TO DOCUMENT GOOD STEWARDSHIP PRACTICES DURING CONSTRUCTION. IF REQUIRED, PRIOR TO COMMENCING ANY DEMOLITION / CONSTRUCTION ACTIVITY, NOTIFY MUNICIPAL FORESTRY DEPARTMENT (NOTIFY AT LEAST 48 HOURS IN ADVANCE OF WORK).**
- B. AN APPROVED TREE PRESERVATION PLAN MUST BE AVAILABLE AT THE BUILDING SITE.
- C. PRIOR TO ANY DEMOLITION / CONSTRUCTION ACTIVITY, INSTALL TREE PRESERVATION FENCE AND PERFORM ROOT PRUNING FOR ALL PROTECTED TREES.
- D. FENCE THE CRITICAL ROOT ZONE (CRZ) / CANOPY DRIP-LINE, OF THE ENTIRE EXISTING TREE TO BE PRESERVED, WITH TREE PROTECTION FENCE. FENCE TO PREVENT WOUNDS TO THE TREE & SOIL COMPACTION. POST THE FENCE WITH A SIGN STATING, "TREE PROTECTION ZONE - KEEP OUT".
- E. ALL REQUIRED TREE PROTECTION FENCING SHALL REMAIN IN PLACE UNTIL THE TIME OF FINISH GRADING AND LANDSCAPING.
- F. NO TRENCHING SHOULD BE DONE WITHIN THE TREE PROTECTION ZONES FOR ANY CONSTRUCTION ACTIVITY, UNLESS PRE-APPROVED BY PROJECT ARBORIST &/OR PROJECT LANDSCAPE ARCHITECT.
- G. NO GRADE CHANGES SHOULD BE DONE WITHIN THE TREE PROTECTION ZONES OF TREES FOR ANY CONSTRUCTION ACTIVITY.
- H. SHOULD IT BE NECESSARY TO TRENCH WITHIN THE CRZ FOR UTILITIES, INCLUDING DISCONNECTION OR CAPPING OF EXISTING UTILITIES, ALL TRENCHES SHALL BE HAND DUG. NO ROOTS LARGER THAN TWO INCHES (2") SHALL BE CUT, UNLESS NO OTHER ALTERNATIVE IS FEASIBLE. ALL SMALLER ROOTS THAT REQUIRE CUTTING, SHALL BE CUT WITH A SHARP PRUNING SAW. CUTS SHALL BE MADE FLUSH WITH THE SIDE OF THE TRENCH. IF AT ANY TIME, TWENTY-FIVE PERCENT (25%) OF THE AREA WITHIN THE CRZ IS BEING SEPARATED FROM THE TREE BY A TRENCH, THEN THE LINE SHALL BE EITHER RELOCATED OR INSTALLED USING TRENCH-LESS METHODS.
- I. LOCATE THE PROPOSED WATER AND SEWER LINES OUTSIDE OF THE TREE PROTECTION ZONE OR INSTALL THE SEWER AND WATER UTILITIES USING TRENCH-LESS METHODS. AUGER THROUGH THE ENTIRE TREE PROTECTION ZONE, LOCATE PITS OUTSIDE OF THE TREE PROTECTION ZONE.
- J. THE PROPOSED WATER SERVICE LINE VALVES (B-BOXES), ARE TO BE TEN FEET (10') FROM PRESERVED TREES. IF FUTURE UTILITY EXCAVATIONS NEED TO OCCUR, THIS REDUCES THE CHANCES OF EXTENSIVE STEM OR ROOT DAMAGE, WHICH COULD LEAD TO TREE DECLINE.
- K. AT NO TIME SHALL ANY EQUIPMENT, MATERIALS, SUPPLIES OR FILL SOIL BE ALLOWED IN THE TREE PROTECTION ZONE(S). DO NOT STORE EXCAVATED SOIL OR THE DUMPSTER WITHIN THE DRIP-LINE (CRZ) OF THE PRESERVED TREE(S).
- L. **REMOVAL OF ANY HARDSCAPE WITHIN THE TREE PROTECTION ZONES WILL BE DONE BY HAND.** NO ROOTS LARGER THAN TWO INCHES (2") SHALL BE CUT, UNLESS THERE IS NO ALTERNATIVE FEASIBLE. CUTS WILL BE MADE WITH A SHARP PRUNING SAW TO AVOID TEARING AND WILL BE FLUSH WITH THE TREE SIDE OF THE TRENCH.
- M. THE TREE PROTECTION ZONE MAY BE MULCHED TO IMPROVE THE GROWING CONDITIONS FOR TREE ROOTS AND TO MINIMIZE MAINTENANCE OF THE LAWN.
- N. ALL OFF-SITE TREES SHALL BE PRESERVED.
- O. EXISTING TREES SHOWN TO REMAIN SHALL BE PRESERVED TO THE BEST EXTENT POSSIBLE, PENDING FINAL SITE PLAN, FINAL CIVIL ENGINEERING, AND/OR ANY UNFORESEEN ISSUES.

TREE PROTECTION FENCE DETAIL



526 SKYLINE DRIVE
ALGONQUIN IL 60102
847 878 4019

CLIENT NAME AND ADDRESS

NET3, LLC

OAK BROOK, IL

PLAN DATE

JUNE 1, 2016

REVISIONS

1.	PER WATER MAIN 6/30/16
2.	PER VILL COMMENTS 7/18/16
3.	PER VILL COMMENTS 7/19/16
4.	PER BASIN 8/19/16
5.	
6.	
7.	
8.	
9.	
10.	

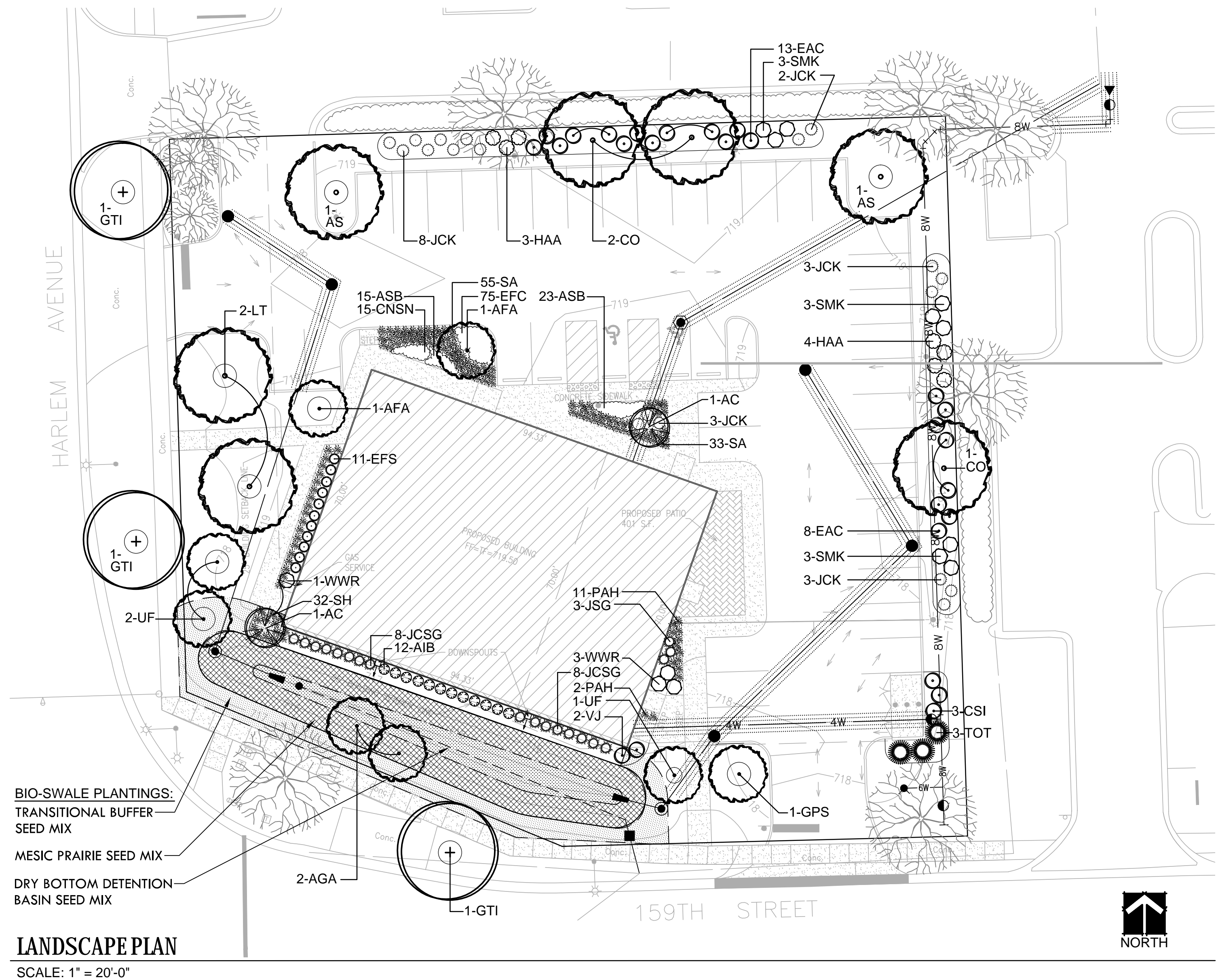
PROJECT NAME AND SHEET TITLE

COMMERCIAL DEVELOPMENT
7170 W. 159TH STREET, ORLAND PARK, IL

TREE PRESERVATION & REMOVAL PLAN

SHEET NUMBER

L1.0



LANDSCAPE PLAN
SCALE: 1" = 20'-0"

PLANT & MATERIALS LIST

CODE	QTY	SIZE	BOTANIC NAME	COMMON NAME
Shade Trees				
AS	2	3" caliper	Acer saccharum	Sugar Maple
CO	3	3" caliper	Celtis occidentalis	Hackberry
GTI	3	3" caliper	Gleditsia triacanthos var. inermis	Thornless Common Honeylocust
LT	2	3" caliper	Liriodendron tulipifera	Tulip Tree
Columnar Shade Trees				
AFA	2	3" caliper	Acer x freemanii 'Armstrong'	Armstrong Freeman Maple
GPS	1	3" caliper	Ginkgo biloba 'Princeton Sentry'	Princeton Sentry Ginkgo
UF	3	3" caliper	Ulmus parvifolia 'Frontier'	Frontier Chinese Elm
Evergreen Trees				
TOT	3	6' high	Thuja occidentalis 'Techny'	Mission Arborvitae
Ornamental Trees				
AC	2	6' high (clump)	Amelanchier canadensis	Shadblow Serviceberry
AGA	2	6' high (clump)	Alnus glutinosa	European Black Alder
Evergreen Shrubs				
EFS	11	24"	Euonymus fortunei 'Sarcodie'	Upright Euonymus
JCK	19	24"	Juniperus chinensis 'Kallay Compact'	Kallay Compact Juniper
JSG	3	24"	Juniperus chinensis 'Sargent Green'	Sargent Green Juniper
JCSG	16	24"	Juniperus chinensis 'Sea Green'	Sea Green Juniper
Large Deciduous Shrubs				
CSI	3	36"	Cornus sericea 'Isanti Redtwig'	Isanti Redtwig Dogwood
EAC	21	36"	Euonymus alatus 'Compactus'	Dwarf Burning Bush
HAA	7	36"	Hydrangea aborescens 'Annabelle'	Annabelle Hydrangea
SMK	9	36"	Syringa patula 'Miss Kim'	Miss Kim Lilac
VJ	2	60"	Viburnum x juddii	Judd Viburnum
WWR	4	36"	Weigela florida 'Wine & Roses'	Wine & Roses Weigela
Small Deciduous Shrubs				
AIB	12	30"	Aronia melanocarpa 'Iroquois Beauty'	Iroquois Beauty Black Chokeberry
Ornamental Grasses				
PAH	13	1 Gal.	Pennisetum alopecuroides 'Hameln'	Dwarf Fountain Grass
SA	88	1 Gal.	Sesleria autumnalis	Autumn Moor Grass
SH	32	1 Gal.	Sporobolus heterolepis	Prairie Dropseed
Perennials				
ASB	38	1 Gal.	Allium x 'Summer Beauty'	Summer Beauty Ornamental Onion
CNSN	15	1 Gal.	Calamintha nepeta ssp. nepeta	Calamint
Groundcover				
EFC	75	3" pot	Euonymus fortunei 'Coloratus'	Purpleleaf Wintercreeper
Materials				
-	6	C.Y.	-	Soil Amendments
-	19	C.Y.	-	Shredded Hardwood Mulch
-	TBD	S.Y.	-	Kentucky Bluegrass Blend Sod / Seed & Blanket

PLANT COUNT CALCULATIONS

PARKWAY:

- EVERY 40 L.F.:
 - (1) 2.5" CALIPER SHADE TREE REQUIRED
 - 33' FROM INTERSECTING STREETS,
 - NO CLOSER THAN 6' FROM CURB FIRE HYDRANTS

PLANT MATERIAL REQUIRED / PROPOSED	
LENGTH	SHADE TREE
352 L.F.	9 / 3 (WITH 1 EXISTING) TOTAL 4

BUFFER:

- EVERY 100 L.F.:
 - (3) 2.5" CALIPER SHADE TREES
 - (1) ORNAMENTAL / EVERGREEN
 - (16) SHRUBS

PLANT MATERIAL REQUIRED / PROPOSED			
LENGTH	SHADE TREE	EVERGREEN / ORNAMENTAL	SHRUBS
336 L.F.	11 / 11	3 / 3	53 / 56

FOUNDATION:

- EVERY 100 L.F. (PLANTABLE BLDG. FACADE):
 - (1) ORNAMENTAL TREE
 - (16) SHRUBS / GRASSES
 - 10' WIDE PLANTING BEDS ON FACADE FACING PUBLIC STREET, AT 100%
 - 7' WIDE PLANTING BEDS ON FACADE NOT FACING PUBLIC STREET, AT 50%.

PLANT MATERIAL REQUIRED / PROPOSED			
FACADE	LENGTH	ORNAMENTAL	SHRUBS & GRASSES
PUBLIC	163.7 L.F.	2 / 2	32 / 111
NOT PUB	0 L.F.	N/A	N/A

PARKING LOT:

- EVERY (10) SPACES:
 - (1) PARKING ISLAND
 - (1) 2.5" CALIPER TREE AND 60% COVERAGE (LIVE PLANT MATERIAL) PER PARKING ISLAND

PLANT MATERIAL REQUIRED / PROPOSED	
PARKING SPACES	SHADE TREE
39	4 / 4



dickson design
STUDIO

526 SKYLINE DRIVE
ALGONQUIN IL 60102
847 878 4019

CLIENT NAME AND ADDRESS

NET3, LLC

OAK BROOK, IL

PLAN DATE

JUNE 1, 2016

REVISIONS

1.	PER WATER MAIN 6/30/16
2.	PER VILL COMMENTS 7/18/16
3.	PER VILL COMMENTS 7/19/16
4.	PER BASIN 8/19/16
5.	
6.	
7.	
8.	
9.	
10.	

PROJECT NAME AND SHEET TITLE

COMMERCIAL DEVELOPMENT
7170 W. 159TH STREET
ORLAND PARK, IL

FINAL LANDSCAPE PLAN

SHEET NUMBER

L2.0