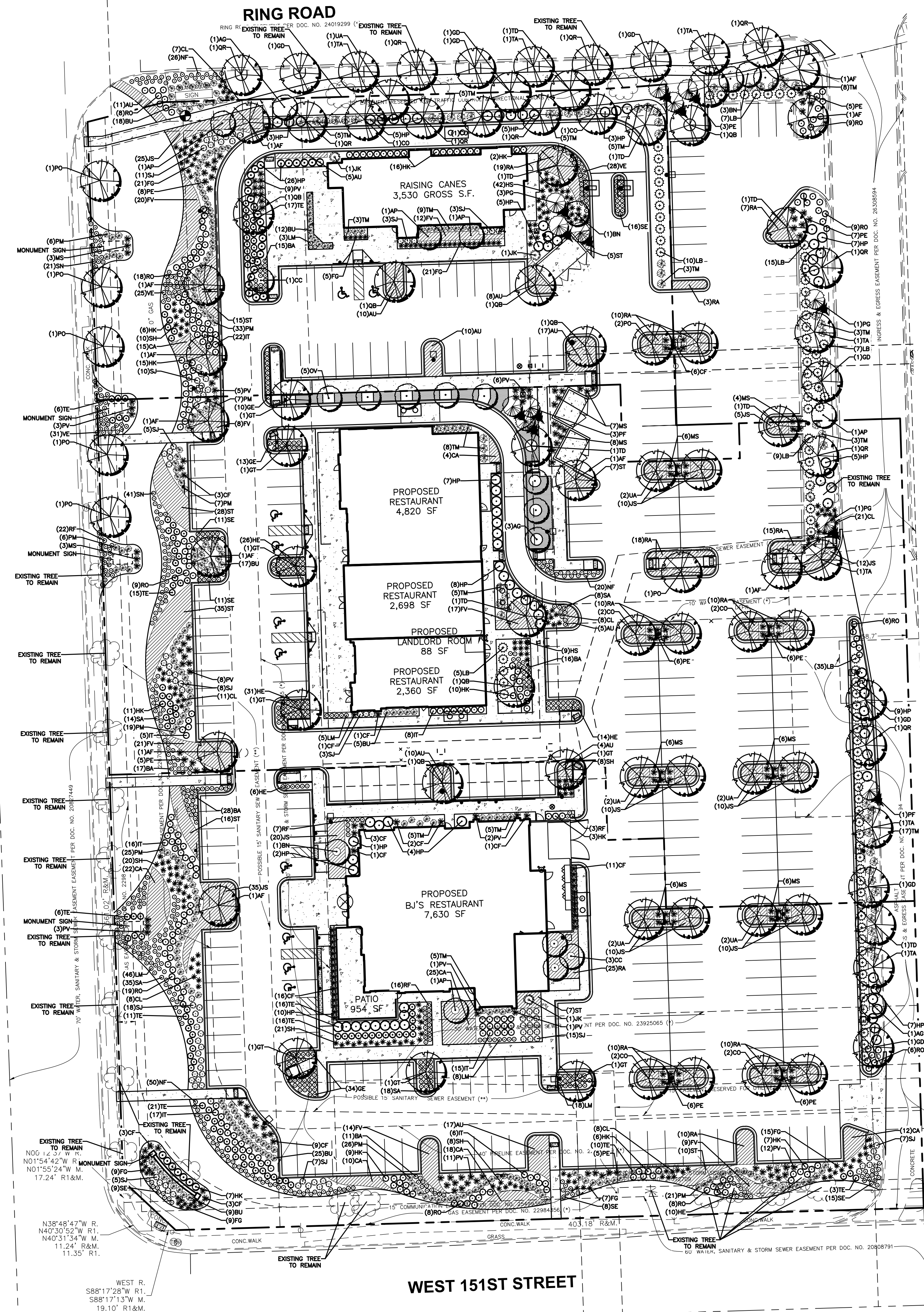


Layout Tab Name: C500 LANDSCAPE PLAN, Images: north.jpg, Xrefs: 079572 - P.dwg, 079572 - X.dwg, 079572 - TBLK.dwg, 079572 - photometrics.dwg, 079572 - X-DIGI.dwg
 Last Saved By: mofortinje, 2/21/2020 4:54:33 PM
 W:\Sriniv\Chicago\Clients Key Development\079572 - Orland Park, IL\4.0 Disciplines\Civil\Cad\Cad\079572 - C500-LAN.dwg Plotted By: Cooke, Jake Plotted: February 25, 2020, 10:39:48 AM

SOUTH LAGRANGE ROAD (U.S. ROUTE 45)



LANDSCAPE CODE SUMMARY

	LENGTH/AREA	PLANT MATERIAL REQUIRED	PLANT MATERIAL PROVIDED
LANDSCAPE PARKWAYS (6-305.D.2)			
S. LAGRANGE ROAD	562 LF	14.05 Trees	9 Existing Trees to Remain and 5 Shade Trees
W. 151st STREET	372 LF	9.3 Trees	9 Existing Trees to Remain
RING ROAD	379 LF	9.5 Trees	10 Shade Trees
LANDSCAPE CORRIDORS (6-305.D.3)			
S. LAGRANGE ROAD	562 LF	5.6 Shade Trees and 5.6 Ornamental or Evergreen Trees	Easements prevent tree planting
W. 151st STREET	372 LF	3.7 Shade Trees and 3.7 Ornamental or Evergreen Trees	Easements prevent tree planting
RING ROAD	379 LF	3.7 Shade Trees and 3.7 Ornamental or Evergreen Trees	3 Existing Trees to Remain 1 Shade Tree 3 Ornamental Trees 1 Evergreen Tree
LANDSCAPE BUFFERYARDS (6-305.D.4)			
WEST	562 LF	16.8 Shade Trees, 5.6 Ornamental or Evergreen Trees, and 89.9 Shrubs	Easements prevent tree planting, 571 Small Shrubs, 118 Ornamental Grasses, and 204 Perennials
SOUTH	372 LF	11.1 Shade Trees, 3.7 Ornamental or Evergreen Trees, and 59.5 Shrubs	Easements prevent tree planting, 269 Small Shrubs, 57 Ornamental Grasses, and 75 Perennials
EAST	446 LF	13.4 Shade Trees, 4.5 Ornamental or Evergreen Trees, 12 Small Shrubs, and 21 Ornamental Grasses	1 Existing Tree to Remain, 12 Shade Trees, 2 Ornamental Tree, 57 Ornamental Grasses, 56 Large Shrubs, 12 Small Shrubs, and 21 Ornamental Grasses
NORTH	379 LF	11.3 Shade Trees, 3.7 Ornamental or Evergreen Trees, 60.6 Shrubs	11 Shade Trees, 2 Evergreen Trees, 2 Ornamental Trees, 40 Large Shrubs, 28 Small Shrubs, 7 Ornamental Grasses, and 28 Perennials
FOUNDATION LANDSCAPE (6-305.D.5.a)			
RAISING CANES	305.5 LF	3.1 Ornamental Trees & 48.9 Shrubs	3 Ornamental Trees, 5 Large Shrubs, 107 Small Shrubs, 67 Ornamental Grasses, and 82 Perennials
PROPOSED RESTAURANT (4,820 SF)	216 LF	2.2 Ornamental Trees & 34.6 Shrubs	3 Ornamental Trees (east of drive-thru lane), 15 Large Shrubs, 4 Small Shrubs, and 19 Ornamental Grasses (adjacent to transformer & dumpsters)
PROPOSED RESTAURANT (2,698 SF)	76 LF	0.76 Ornamental Trees & 12.2 Shrubs	1 Ornamental Tree (between Lot 1 & Lot 2), 8 Large Shrubs, 22 Small Shrubs, and 8 Ornamental Grasses
PROPOSED RESTAURANT (2,360 SF)	152 LF	1.5 Ornamental Trees & 24.3 Shrubs	2 Ornamental Tree (between Lot 1 & Lot 2), 5 Large Shrubs, 28 Small Shrubs, 11 Ornamental Grasses, and 21 Perennials
BJ'S	422 LF	4.2 Ornamental Trees & 67.5 Shrubs	5 Ornamental Trees, 1 Evergreen Tree, 17 Large Shrubs, 141 Small Shrubs, 59 Ornamental Grasses, and 34 Perennials
INTERIOR LOT LANDSCAPE (6-305.D.5.b)			
ENTIRE SITE	217,574 SF	21.75 Trees	15 Shade Trees and 7 Ornamental Trees
PARKING LOT PERIMETER SCREENING (6-305.D.6.a.1)			
WEST	332 LF	332 lf of 3' shrubs	Easement prevents plantings over 18 inches
SOUTH	290 LF	290 lf of 3' shrubs	Easement prevents plantings over 18 inches
EAST	381 LF	381 LF of 3' shrubs	59 Large Shrubs
NORTH	47 LF	47 lf of 3' shrubs	7 Large Shrubs
PARKING LOT ISLAND LANDSCAPING (6-305.D.6.a.2)			
ENTIRE SITE	322 SPACES	32.2 Trees & Groundcover	32 Shade Trees, 280 Small Shrubs, 17 Large Shrubs, 17 Ornamental Grasses, and 223 Perennials
SIGNAGE LANDSCAPING (6-305.D.7.a)			
ENTIRE SITE	6 SIGNS	5' Landscape Bed around Sign	71 Small Shrubs, 43 Ornamental Grasses, and 155 Perennials

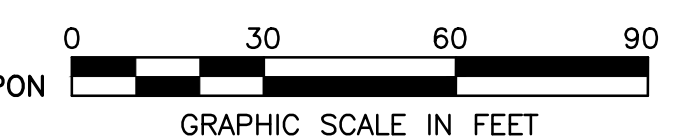
LANDSCAPE NOTES

- LOCATING AND PROTECTING ALL UNDERGROUND UTILITIES, PRIOR TO DIGGING, IS RESPONSIBILITY OF THE LANDSCAPE CONTRACTOR.
- PRIOR TO INSTALLATION, THE LANDSCAPE CONTRACTOR SHALL INSPECT THE SUB GRADE, GENERAL SITE CONDITIONS, VERIFY ELEVATIONS, UTILITY LOCATIONS, IRRIGATION, APPROVE TOPSOIL PROVIDED BY GENERAL CONTRACTOR AND OBSERVE THE SITE CONDITIONS UNDER WHICH THE WORK IS TO BE DONE. NOTIFY GENERAL CONTRACTOR OF ANY UNSATISFACTORY CONDITIONS. WORK SHALL NOT PROCEED UNTIL SUCH CONDITIONS HAVE BEEN CORRECTED AND ARE ACCEPTABLE TO THE LANDSCAPE CONTRACTOR AND/OR CONSTRUCTION MANAGER.
- GENERAL AND LANDSCAPE CONTRACTOR ARE RESPONSIBLE FOR PROTECTING EXISTING TREES FROM DAMAGE DURING CONSTRUCTION. GENERAL CONTRACTOR TO INSTALL TREE PROTECTION FENCING PRIOR TO ANY SITE WORK.
- ALL SHRUB AND GROUND COVER BEDS TO BE MULCHED WITH A MINIMUM OF 3 INCHES OF CLEAN SHREDDED HARDWOOD MULCH.
- PLANTING HOLES TO BE DUG A MINIMUM OF TWICE THE WIDTH OF THE ROOT BALL OF BOTH SHRUB AND TREE. AMEND BACKFILL WITH TOPSOIL MIX. TOPSOIL MIX TO BE 4 PARTS SCREENED TOPSOIL AND 1 PART ORGANIC MATERIAL (i.e. NATURE'S HELPER OR PRO MIX).
- EXISTING GRASS IN PROPOSED PLANTING AREAS TO BE REMOVED AND AREA TO BE HAND RAKED TO REMOVE ALL ROCKS AND DEBRIS LARGER THAN 1 INCH IN DIAMETER PRIOR TO PLANTING SHRUBS.
- SOIL TO BE TESTED TO DETERMINE FERTILIZER AND LIME REQUIREMENTS. LIME AND FERTILIZER TO BE DISTRIBUTED PRIOR TO LAYING SOD. ALL DISTURBED AREAS (INCLUDING RIGHT-OF-WAYS) NOT RECEIVING PLANTINGS TO RECEIVE 4 INCHES OF TOPSOIL AND SODDED.
- SOD TO BE DELIVERED FRESH (CUT LESS THAN 24 HOURS PRIOR TO ARRIVING ON SITE), LAID IMMEDIATELY, ROLLED AND WATERED THOROUGHLY WITHIN ONE HOUR OF INSTALLATION.
- ALL CHANGES TO DESIGN AND/OR PLANT SUBSTITUTIONS TO BE AUTHORIZED BY LANDSCAPE ARCHITECT.
- ALL PARKING ISLANDS TO BE BERMED UP 6"-10" WITH CLEAN FRIABLE TOPSOIL PRIOR TO PLANTING.
- ALL LANDSCAPING SHALL BE INSTALLED IN CONFORMANCE WITH ANSI Z60.1 THE AMERICAN STANDARD FOR NURSERY STOCK, AND THE ACCEPTED STANDARDS OF THE AMERICAN ASSOCIATION OF NURSERYMEN.
- THE LANDSCAPE CONTRACTOR SHALL GUARANTEE ALL PLANTS INSTALLED FOR ONE FULL YEAR FROM DATE OF ACCEPTANCE BY THE OWNER. ALL PLANTS SHALL BE ALIVE AND AT A VIGOROUS RATE OF GROWTH AT THE END OF THE GUARANTEE PERIOD. THE LANDSCAPE CONTRACTOR SHALL NOT BE RESPONSIBLE FOR ACTS OF GOD OR VANDALISM.
- ANY PLANT THAT IS DETERMINED DEAD, IN AN UNHEALTHY OR UNSIGHTLY CONDITION, LOST ITS SHAPE DUE TO DEAD BRANCHES OR OTHER SYMPTOMS OF POOR, NON-VIGOROUS GROWTH SHALL BE REPLACED BY THE LANDSCAPE CONTRACTOR WITH THE COST OF THE REPLACEMENT INCLUDED IN THE BID OR PROPOSAL PRICE.
- WATER THOROUGHLY TWICE IN THE FIRST 24 HOURS AND APPLY MULCH IMMEDIATELY.
- LANDSCAPE REQUIREMENTS NOT MET BY PARTICULAR CODE REQUIREMENT ARE PROVIDED ELSEWHERE ON SITE.
- PROPERTY OWNER RESPONSIBLE FOR MAINTAINING AND PRUNING TREES TO AVOID CONFLICT WITH POLE MOUNTED LIGHTING.



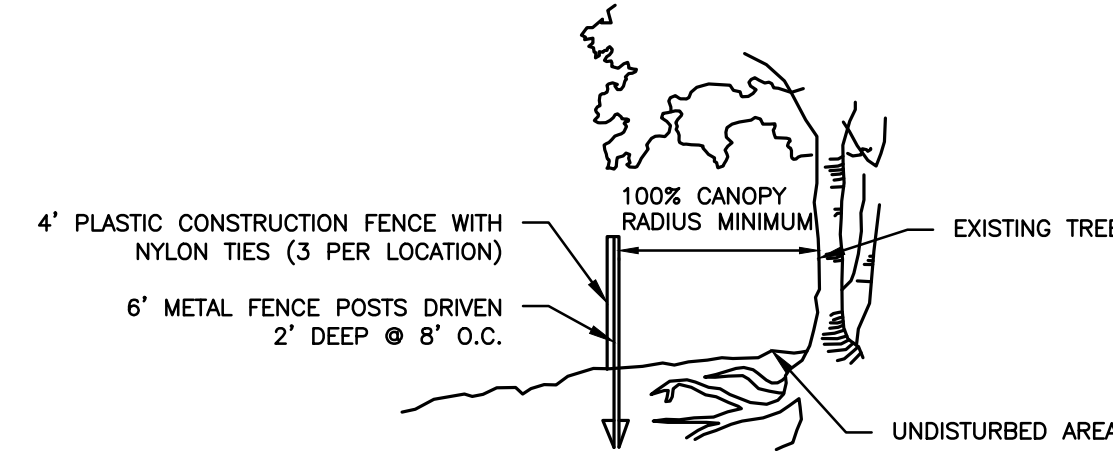
PROJECT NO: 079572 DATE 10/02/19 DES. JM DR. JM CKD. JG	REVISION No. DATE 4 02/25/20 REVISED PER VILLAGE AND MWRD COMMENTS 3 02/14/20 REVISED SITE PLAN PER CLIENT 2 01/29/20 REVISED PER VILLAGE REVIEW 1 12/03/19 REVISED PER VILLAGE REVIEW
	1815 South Meyers Road Suite 950 Oakbrook Terrace, IL 60181 630.424.9080 FAX: 630.495.3731
	WOOLPERT ARCHITECTURAL ENGINEERING & LANDSCAPE
	SITE IMPROVEMENT PLANS LAGRANGE SQUARE 45 ORLAND SQUARE DRIVE ORLAND PARK, COOK COUNTY, IL 60462 LANDSCAPE PLAN

BENCHMARK (⊙):
 THE BASIS OF ELEVATIONS HEREON IS NAVD 88 PER OBSERVATIONS OF SELECTED STATIONS IN THE NATIONAL GEODETIC SURVEY CONTINUOUSLY OPERATING REFERENCE STATION (NGS CORNS) NETWORK. IRON PIPE IN CONCRETE FOUND - SEE DRAWING FOR LOCATION.
 ELEVATION = 706.60'
 THE EXISTING CONDITIONS SHOWN ARE BASED UPON A SURVEY PREPARED BY WOOLPERT AND DATED 05/31/19.



SHEET NO. **C500**

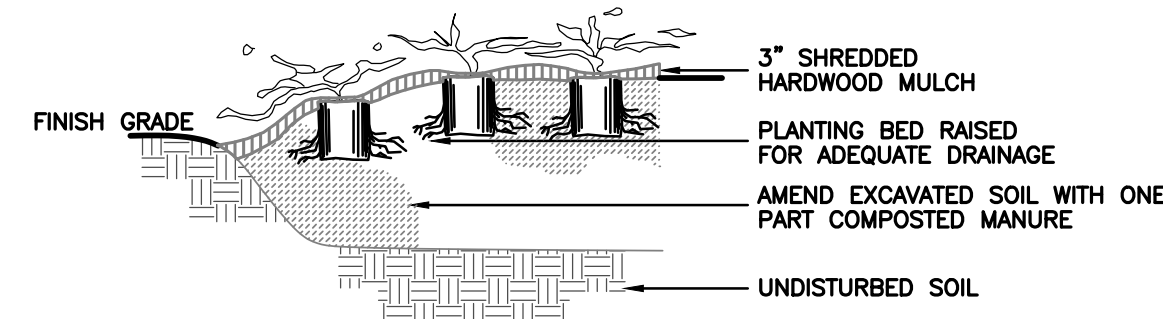
Layout Tab Name: C501 LANDSCAPE DETAILS, Images: north.jpg, grzywa_seal.jpg, Xrefs: 079572 - P.dwg, 079572 - TBLK.dwg, 079572 - photometrics.dwg, 079572 - X-DIGI.dwg
 Last Saved By: mofortinje, 2/21/2020 4:54:33 PM
 G:\DE\Clients\Key_Development\079572 - Orland Park, IL\4.0 Disciplines\Civil\Cadd\Cd\079572 - C500-LAN.dwg Plotted By: Cooke, Jake Plotted February 25, 2020, 10:40:08 AM



FENCE MUST BE MAINTAINED THROUGHOUT CONSTRUCTION PERIOD AND REMOVED WHEN CONSTRUCTION HAS BEEN COMPLETED. FINAL PLACEMENT OF FENCE MUST BE APPROVED BY THE OWNER'S REPRESENTATIVE.

TREE PRESERVATION FENCING

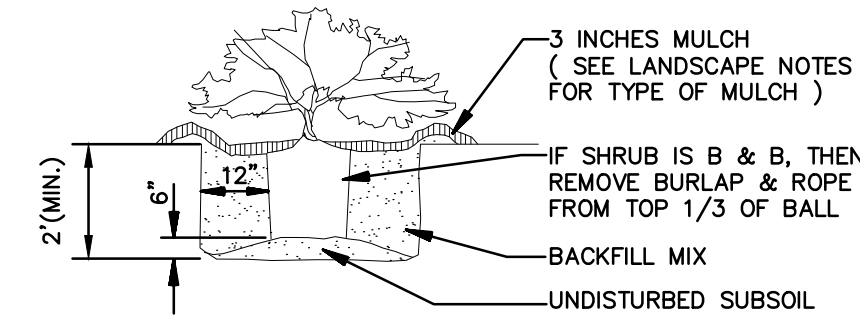
N.T.S.



- NOTE:
1. SIZE OF PIT VARIES WITH SIZE OF ROOT BALL.
 2. TOP OF BALL TO BE 1"-2" ABOVE FINISH GRADE.
 3. SPREAD FERTILIZER EVENLY IN SAUCER.
 4. RETAIN ALL LEADERS.

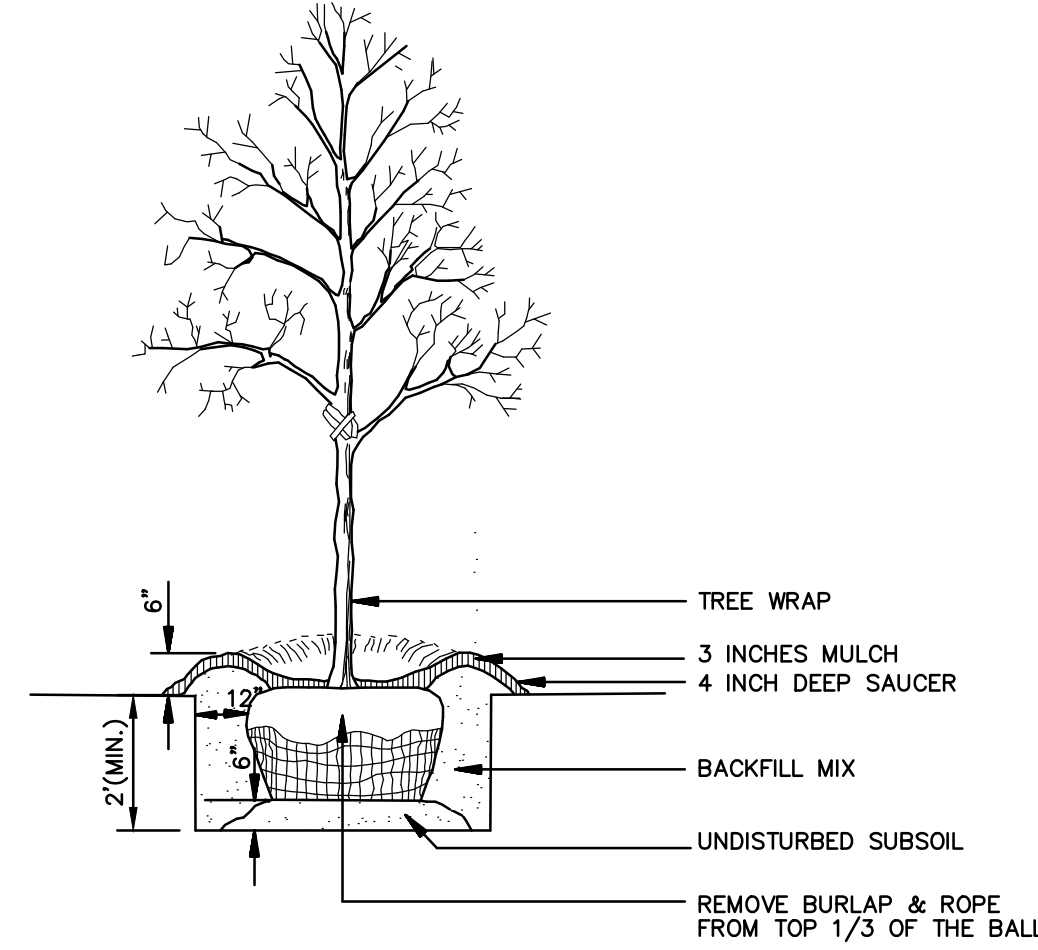
PERENNIAL & GROUNDCOVER PLANTING

N.T.S.



SHRUB PLANTING

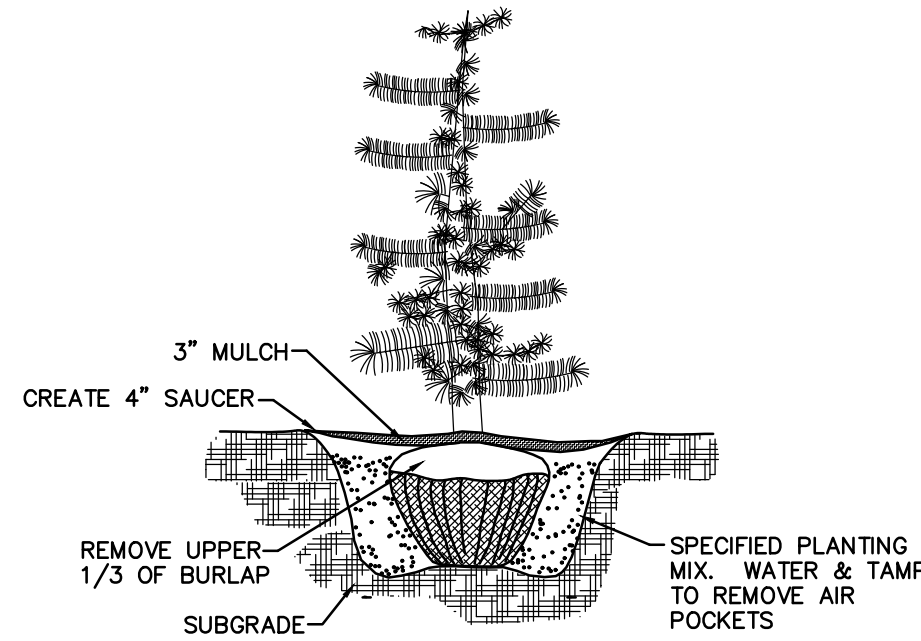
N.T.S.



NOTE: SEE LANDSCAPE NOTES FOR THE TYPE OF MULCH MATERIAL TO USE.

TREE PLANTING

N.T.S.



EVERGREEN PLANTING DETAIL

N.T.S.

PLANT SCHEDULE						
TAG	QTY	SCIENTIFIC NAME	COMMON NAME	COND.	SIZE	REMARKS
SHADE TREE						
AF	11	Acer x freemanii 'Jeffersred'	Autumn Blaze Maple	B&B	2.5" cal. 14'ht. 7'wd	Full, well shaped
CO	11	Celtis occidentalis 'Prairie Pride'	Prairie Pride Hackberry	B&B	2.5" cal. 14'ht. 7'wd	Native, Full, well shaped
GT	8	Gleditsia triacanthos var. inermis 'Impcole'	Imperial Honeylocust	B&B	2.5" cal. 14'ht. 7'wd	Full, well shaped
GD	8	Gymnocladus dioica 'Espresso'	Fruitless KY Coffeetree	B&B	2.5" cal. 14'ht. 7'wd	Native, Full, well shaped
PO	8	Platanus occidentalis	American Sycamore	B&B	2.5" cal. 14'ht. 7'wd	Native, Full, well shaped
QB	7	Quercus bicolor	Swamp White Oak	B&B	2.5" cal. 14'ht. 7'wd	Full, well shaped
QR	10	Quercus rubrum	Northern Red Oak	B&B	2.5" cal. 14'ht. 7'wd	Full, well shaped
TD	8	Taxodium distichum	Bald Cypress	B&B	2.5" cal. 14'ht. 7'wd	Native, Full, well shaped
TA	7	Tilia americana 'Redmond'	Redmond American Linden	B&B	2.5" cal. 14'ht. 7'wd	Native, Full, well shaped
UA	11	Ulmus americana 'Princeton'	Princeton American Elm	B&B	2.5" cal. 14'ht. 7'wd	Full, well shaped
ORNAMENTAL / EVERGREEN TREE						
AP	5	Aesculus pavia	Red Buckeye	B&B	2" cal. 6'ht. 3'wd.	Native, Full, well shaped, single-stem
AG	5	Amelanchier x grandiflora 'Autumn Brilliance'	Apple Serviceberry	B&B	2" cal. 6'ht. 3'wd.	Full, well shaped, single-stem
BN	5	Betula nigra 'BNMTF'	Dura Heat River Birch	B&B	2" cal. 6'ht. 3'wd.	Native, Full, well shaped, single-stem
CC	4	Cercis canadensis	Eastern Redbud	B&B	2" cal. 6'ht. 3'wd.	Native, Full, well shaped, single-stem
JK	3	Juniperus chinensis 'Keteleeri'	Keteleeri Upright Juniper	B&B	6'ht. x 3'wd.	Full to ground, well shaped
OV	5	Ostrya virginiana	American Hop Hornbeam	B&B	2" cal. 6'ht. 3'wd.	Full, well shaped, single-stem
PG	5	Picea glauca 'Densata'	Black Hills Spruce	B&B	6'ht. x 3'wd.	Full to ground, well shaped
PE	7	Pinus echinata	Short-Leaf Pine	B&B	6'ht. x 3'wd.	Native, Full to ground, well shaped
EVERGREEN SHRUB						
AU	97	Archostaphylos uva-ursi 'Massachusetts'	Bearberry	#3 cont.	12"ht. x 18"wd.	Native, Full, vigorous, 4' o.c.
BU	101	Buxus x 'Glencoe'	Chicogoland Green Boxwood	#3 cont.	18"ht. x 18"wd.	Full, vigorous
JS	147	Juniperus chinensis sargentii 'Viridis'	Green Sargent Juniper	#3 cont.	12"ht. x 18"wd.	Full, vigorous, 4' o.c.
PM	150	Pinus mugo 'Slowmound'	Dwarf Mugo Pine	#3 cont.	12"ht. x 18"wd.	Full, vigorous
TM	94	Taxus x media 'Densiflora'	Dense Yew	#3 cont.	18"ht. x 18"wd.	Full, vigorous
TE	105	Taxus x media 'Everlow'	Everlow Yew	#3 cont.	12"ht. x 18"wd.	Full, vigorous
DECIDUOUS SHRUB						
CA	106	Cotoneaster adpressus	Creeping Cotoneaster	#3 cont.	12"ht. x 18"wd.	Full, vigorous, 4' o.c.
FV	101	Forsythia viridissima 'Bronxensis'	Greenstem Forsythia	#3 cont.	12"ht. x 18"wd.	Full, vigorous, 4' o.c.
HP	122	Hydrangea paniculata 'Bobo'	Bobo Panicle Hydrangea	#5 cont.	24"ht. x 24"wd.	Full, vigorous
HK	92	Hypericum kalmianum 'Blues Festival'	Blues Festival St Johns Wort	#3 cont.	18"ht. x 18"wd.	Native, Full, vigorous
IT	89	Itea virginica 'Little Henry'	Little Henry Sweetpire	#3 cont.	18"ht. x 18"wd.	Native, Full, vigorous
LB	88	Lindera benzoin	Spicebush	#5 cont.	24"ht. x 24"wd.	Native, Full, vigorous
RA	147	Rhus aromatica 'Gro-Low'	Gro-Low Fragrant Sumac	#3 cont.	12"ht. x 18"wd.	Native, Full, vigorous, 4' o.c.
RO	100	Rosa x 'Noaschnee'	White Carpet Rose	#3 cont.	12"ht. x 18"wd.	Full, vigorous
SJ	95	Spiraea japonica 'Shirobana'	Shirobana Spirea	#3 cont.	12"ht. x 18"wd.	Full, vigorous
ST	123	Stephanandra incisa 'Crispa'	Cutleaf Stephanandra	#3 cont.	12"ht. x 18"wd.	Full, vigorous, 4' o.c.
ORNAMENTAL GRASS						
CF	60	Calamagrostis x acutiflora 'Karl Forester'	Feather Reed Grass	#1 cont.		Full, vigorous
CL	63	Chasmanthium latifolium	Northern Sea Oats	#1 cont.		Native, Full, vigorous
FG	87	Festuca glauca 'Elijah Blue'	Elijah Blue Fescue	#1 cont.		Full, vigorous
HS	48	Helictotrichon sempervitens avena	Blue Oats Grass	#1 cont.		Full, vigorous
MS	55	Miscanthus sinensis 'Little Zebra'	Little Zebra Grass	#1 cont.		Full, vigorous
PV	61	Panicum virgatum 'Hot Rod'	Hot Rod Red Switchgrass	#1 cont.		Native, Full, vigorous
PE	54	Pennisetum alopecuroides 'Hameln'	Dwarf Fountain Grass	#1 cont.		Full, vigorous
SH	67	Sporobolus heterolepis	Prairie Dropseed	#1 cont.		Native, Full, vigorous
PERENNIAL						
BA	87	Baptisia australis var. minor	Dwarf False Indigo	#1 cont.		Native, Full, vigorous
GE	57	Geranium 'Rozanne'	Rozanne Geranium	#1 cont.		Full, vigorous
HE	87	Asclepias tuberosa	Butterfly Weed	#1 cont.		Native, Full, vigorous
LM	92	Liriope muscari 'Big Blue'	Big Blue Lilyturf	#1 cont.		Full, vigorous
NF	96	Nepeta x foassenii 'Purrsian Blue'	Purrsian Blue Catmint	#1 cont.		Full, vigorous
RF	48	Rudbeckia hirta	Black-Eyed Susan	#1 cont.		Native, Full, vigorous
SN	62	Salvia nemorosa 'Mainacht'	May Night Salvia	#1 cont.		Full, vigorous
SE	70	Sedum ellacombianum	Yellow Stonecrop	#1 cont.		Full, vigorous
SA	75	Sedum 'Autumn Joy'	Autumn Joy Stonecrop	#1 cont.		Full, vigorous
VE	84	Veronica 'Hocus Pocus'	Magic Show Veronica	#1 cont.		Full, vigorous

* QUANTITIES ARE PROVIDED FOR CONVENIENCE ONLY. CONTRACTOR IS RESPONSIBLE FOR ALL QUANTITIES OF PLANTS ON LANDSCAPE PLAN.

PLANT DIVERSITY									
PLANT TYPE	# PLANTS	MAX # OF INDIVIDUAL SPECIES	MAX # OF INDIVIDUAL SPECIES PROVIDED	MIN # OF INDIVIDUAL SPECIES	MIN # OF INDIVIDUAL SPECIES PROVIDED	MIN # OF NATIVE PLANTS (30%)	# OF NATIVE PLANTS (30%) PROVIDED	MIN # OF DIFFERENT SPECIES	# OF DIFFERENT SPECIES PROVIDED
Shade Tree	90	27	11	4.5	7	27	52	8	10
Ornamental Tree	24	9.6	5	2.4	4	7.2	14	5	5
Evergreen Tree	15	6.75	7	3	3	4.5	7	3	3
Shrub	1,775	266.3	150	88.7	88	532.5	513*	15	15
Ornamental Grass	501	125.3	87	25	48	150.3	191	8	8
Perennial	717	179.3	96	35.8	48	215.1	222	10	10

* DEFICIENT DUE TO LACK OF AVAILABILITY OF SUITABLE NATIVE SHRUBS WITH GROWTH BELOW EIGHTEEN INCHES.

PERMANENT SOD BLEND

- 90% FINE LEAF FESCUE (FESTUCA ARUNDINACEA)
- REBEL II, WRANGLER, BONAJAVE OR EQUAL
- 10% KENTUCKY BLUEGRASS (POA PRATENSIS)
- MIDNIGHT, RUGBY II, MIDIRON VARIETIES OR EQUAL
- PURITY AND 85% GERMINATION
- 95% WEED FREE

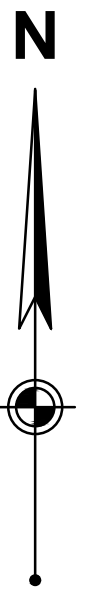
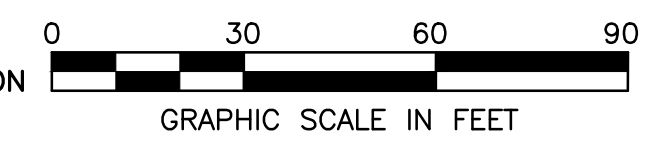
LAWN AREA (3,000 SF)
PLUS ALL DISTURBED EXISTING TURF TO REMAIN

BENCHMARK (⊙):

THE BASIS OF ELEVATIONS HEREON IS NAVD 88 PER OBSERVATIONS OF SELECTED STATIONS IN THE NATIONAL GEODETIC SURVEY CONTINUOUSLY OPERATING REFERENCE STATION (NGS CORN) NETWORK. IRON PIPE IN CONCRETE FOUND - SEE DRAWING FOR LOCATION.

ELEVATION = 706.60'

THE EXISTING CONDITIONS SHOWN ARE BASED UPON A SURVEY PREPARED BY WOOLPERT AND DATED 05/31/19.



REVISION

DATE

PROJECT No: 079572

DATE 10/02/19

DES. JC

DR. JM

CKD. JG

No.

4

3

2

1

02/25/20

02/14/20

01/29/20

12/03/19

REVISED PER VILLAGE AND MWRD COMMENTS

REVISED SITE PLAN PER CLIENT

REVISED PER VILLAGE REVIEW

REVISED PER VILLAGE REVIEW

1815 South Meyers Road
Suite 950
Oakbrook Terrace, IL 60181
630.424.9080
FAX: 630.495.3731

WOOLPERT
ARCHITECTURAL ENGINEERING & LANDSCAPE

SITE IMPROVEMENT PLANS
LAGRANGE SQUARE

45 ORLAND SQUARE DRIVE
ORLAND PARK, COOK COUNTY, IL 60462

LANDSCAPE DETAILS

SHEET NO.

C501