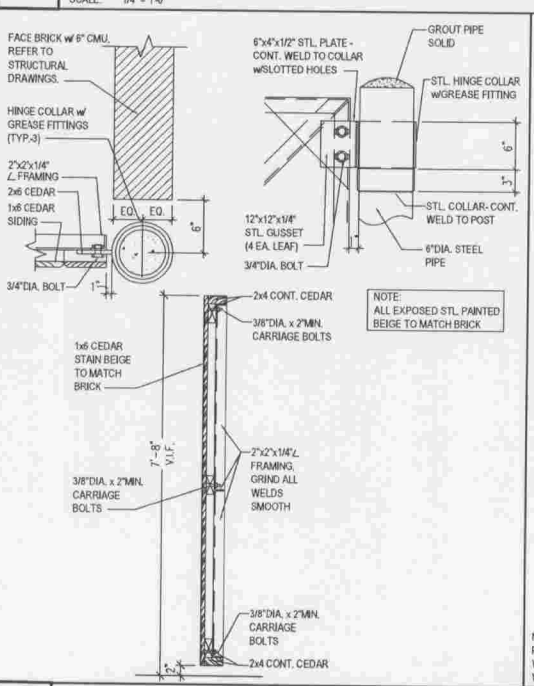
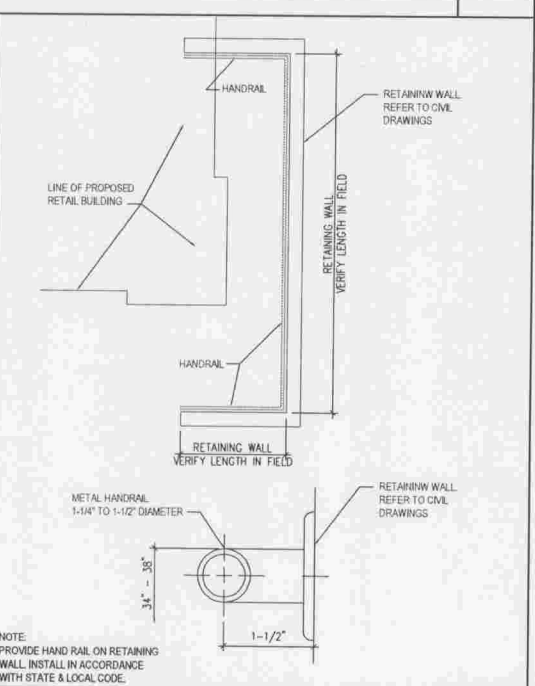


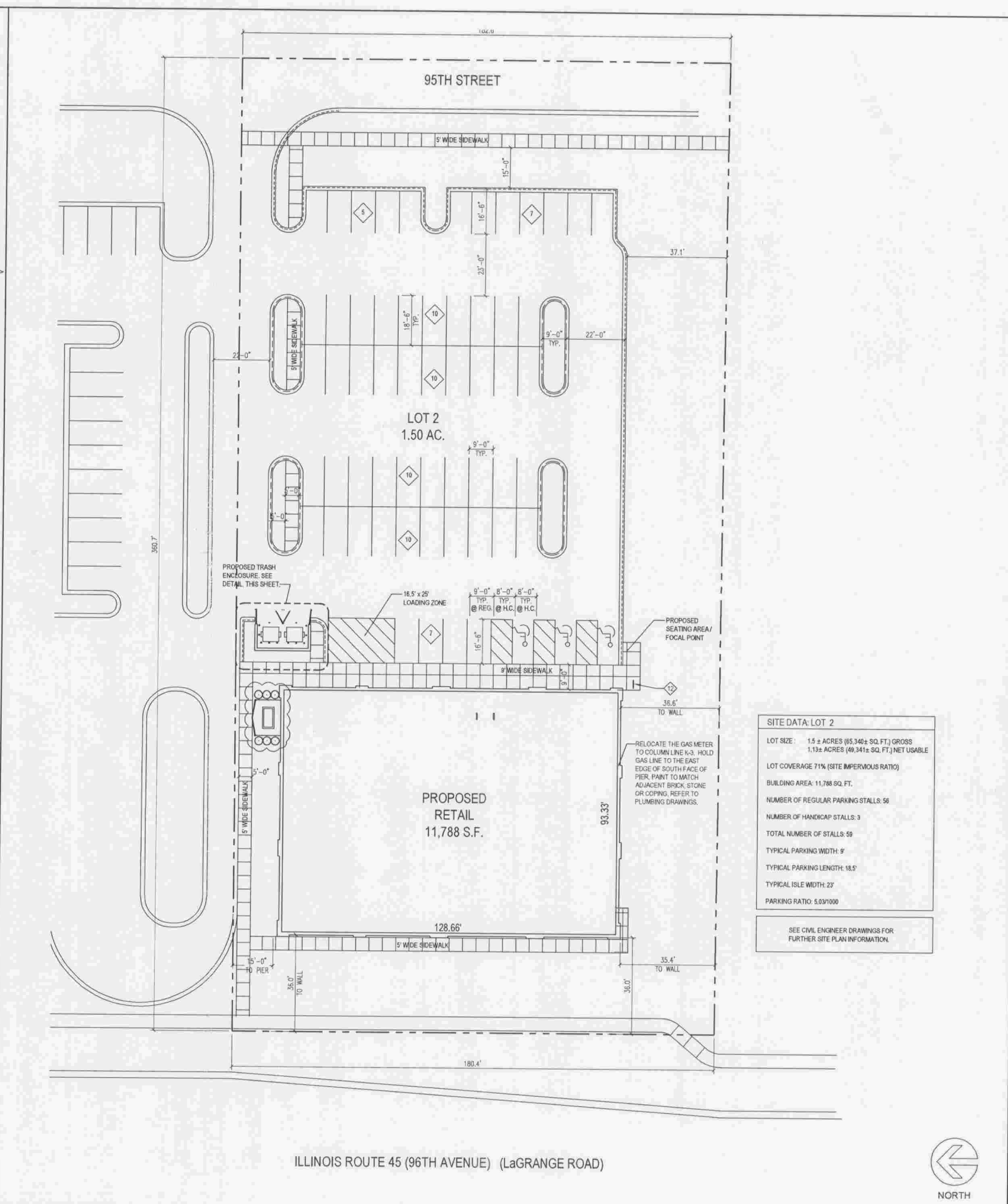
1 TRASH & GENERATOR ENCLOSURES
SCALE: 1/4" = 1'-0"



2 POST & WOOD GATE DETAIL
SCALE: 1/4" = 1'-0"



3 HANDRAIL DETAIL @ RETAINING WALL
SCALE: N.T.S.



4 SITE PLAN
SCALE: 1" = 20'

SITE DATA: LOT 2

LOT SIZE: 1.5 ± ACRES (65,340 ± SQ. FT.) GROSS
1.13 ± ACRES (49,341 ± SQ. FT.) NET USABLE

LOT COVERAGE 71% (SITE IMPERVIOUS RATIO)

BUILDING AREA: 11,788 SQ. FT.

NUMBER OF REGULAR PARKING STALLS: 59

NUMBER OF HANDICAP STALLS: 3

TOTAL NUMBER OF STALLS: 59

TYPICAL PARKING WIDTH: 9'

TYPICAL PARKING LENGTH: 18.5'

TYPICAL ISLE WIDTH: 23'

PARKING RATIO: 5.03/1000

SEE CIVIL ENGINEER DRAWINGS FOR FURTHER SITE PLAN INFORMATION.

Discovery
clothing company

DISCOVERY CLOTHING COMPANY
LOWES OF ORLAND PARK - LOT 2
ORLAND PARK, ILLINOIS 60462

ARCHITECTURAL SITE PLAN AND TRASH ENCLOSURE DETAILS

CHIPMAN ADAMS LTD.
Architects
4500 N. Northwest Highway, Suite 400
Orland Park, Illinois 60462-1463
TEL: 708-595-0900 FAX: 708-298-0966

Revisions:
 PROTOTYPE CHANGES & CLARIFICATIONS 03.07.08
 PROTOTYPE CHANGES & CLARIFICATIONS 03.22.08
 CLIENT CHANGE & CLARIFICATIONS 08.05.08
 CLIENT CHANGE 09.05.08

ARCHITECT
 Drawn By: EM
 Checked By: MR
 Scale: AS NOTED
 Date: 12.21.07
 Job No.:
 Sheet No.: 07-6851
A0.0