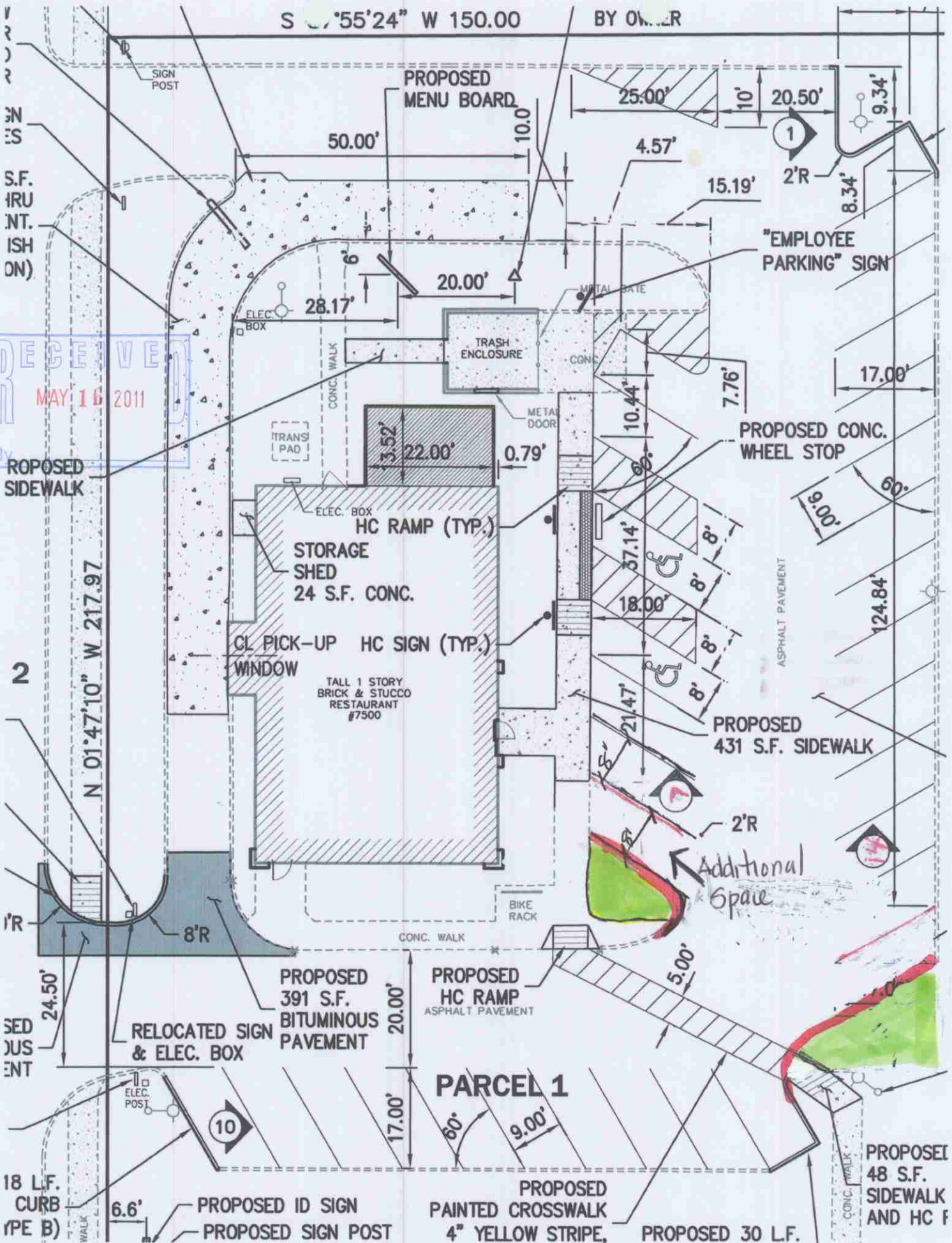


S 0°55'24" W 150.00

BY OWNER



**RECEIVED**  
 MAY 16 2011

PROPOSED  
 SIDEWALK

N 01°47'10" W 217.97

2

SED  
 SUS  
 ENT

18 LF.  
 CURB  
 (TYPE B)

RELOCATED SIGN  
 & ELEC. BOX

PROPOSED  
 391 S.F.  
 BITUMINOUS  
 PAVEMENT

PROPOSED  
 HC RAMP  
 ASPHALT PAVEMENT

**PARCEL 1**

PROPOSED  
 PAINTED CROSSWALK  
 4" YELLOW STRIPE,

PROPOSED 30 LF.

PROPOSED  
 48 S.F.  
 SIDEWALK  
 AND HC F

PROPOSED  
 431 S.F. SIDEWALK

PROPOSED CONC.  
 WHEEL STOP

"EMPLOYEE  
 PARKING" SIGN

PROPOSED  
 MENU BOARD

ELEC. BOX

TRANS. PAD

STORAGE  
 SHED  
 24 S.F. CONC.

CL PICK-UP WINDOW  
 HC SIGN (TYP.)

TALL 1 STORY  
 BRICK & STUCCO  
 RESTAURANT  
 #7500

BIKE RACK

CONC. WALK

ASPHALT PAVEMENT

METAL GATE

METAL DOOR

CGNC

TRASH ENCLOSURE

ELEC. BOX

CONC. WALK

4.57'

10'

20.50'

9.34'

1

2'R

8.34'

15.19'

50.00'

10.0'

28.17'

20.00'

10.44'

7.76'

17.00'

22.00'

0.79'

9.00'

60°

124.84'

3.52'

10.44'

7.76'

22.00'

0.79'

10.44'

7.76'

9.00'

60°

124.84'

22.00'

0.79'

10.44'

7.76'

9.00'

60°

124.84'

22.00'

0.79'

10.44'

7.76'

9.00'

60°

124.84'

22.00'

0.79'

10.44'

7.76'

9.00'

60°

124.84'

22.00'

0.79'

10.44'

7.76'

9.00'

60°

124.84'

22.00'

0.79'

10.44'

7.76'

9.00'

60°

124.84'

22.00'

0.79'

10.44'

7.76'

9.00'

60°

124.84'

22.00'

0.79'

10.44'

7.76'

9.00'

60°

124.84'

22.00'

0.79'

10.44'

7.76'

9.00'

60°

124.84'

22.00'

0.79'

10.44'

7.76'

9.00'

60°

124.84'

22.00'

0.79'

10.44'

7.76'

9.00'

60°

124.84'

22.00'

0.79'

10.44'

7.76'

9.00'

60°

124.84'

22.00'

0.79'

10.44'

7.76'

9.00'

60°

124.84'

22.00'

0.79'

10.44'

7.76'

9.00'

60°

124.84'

22.00'

0.79'

10.44'

7.76'

9.00'

60°

124.84'

22.00'

0.79'

10.44'

7.76'

9.00'

60°

124.84'

22.00'

0.79'

10.44'

7.76'

9.00'

60°

124.84'

22.00'

0.79'

10.44'

7.76'

9.00'

60°

124.84'

22.00'

0.79'

10.44'

7.76'

9.00'

60°

124.84'

22.00'

0.79'

10.44'

7.76'

9.00'

60°

124.84'

22.00'

0.79'

10.44'

7.76'

9.00'

60°

124.84'

22.00'

0.79'

10.44'

7.76'

9.00'

60°

124.84'

22.00'

0.79'

10.44'

7.76'

9.00'

60°

124.84'

22.00'

0.79'

10.44'

7.76'

9.00'

60°

124.84'

22.00'

0.79'

10.44'

7.76'

9.00'

60°

124.84'

22.00'

0.79'

10.44'

7.76'

9.00'

60°

124.84'

22.00'

0.79'

10.44'

7.76'

9.00'

60°

124.84'

22.00'

0.79'

10.44'

7.76'

9.00'

60°

124.84'

22.00'

0.79'

10.44'

7.76'

9.00'

60°

124.84'

22.00'

0.79'

10.44'

7.76'

9.00'

60°

124.84'

22.00'

0.79'

10.44'

7.76'

9.00'

60°

124.84'

22.00'

0.79'

10.44'

7.76'

9.00'

60°

124.84'

22.00'

0.79'

10.44'

7.76'

9.00'

60°

124.84'