



Design based on Drawings
by:
Chicago SMSA &
Fullerton Engineering
Consultants

Village-Owned Water Tower Co-Locations

Concept Plan

Development Services Department
Dated: March 11, 2010

Per Development Review discussion
March 10, 2010

NOTES:

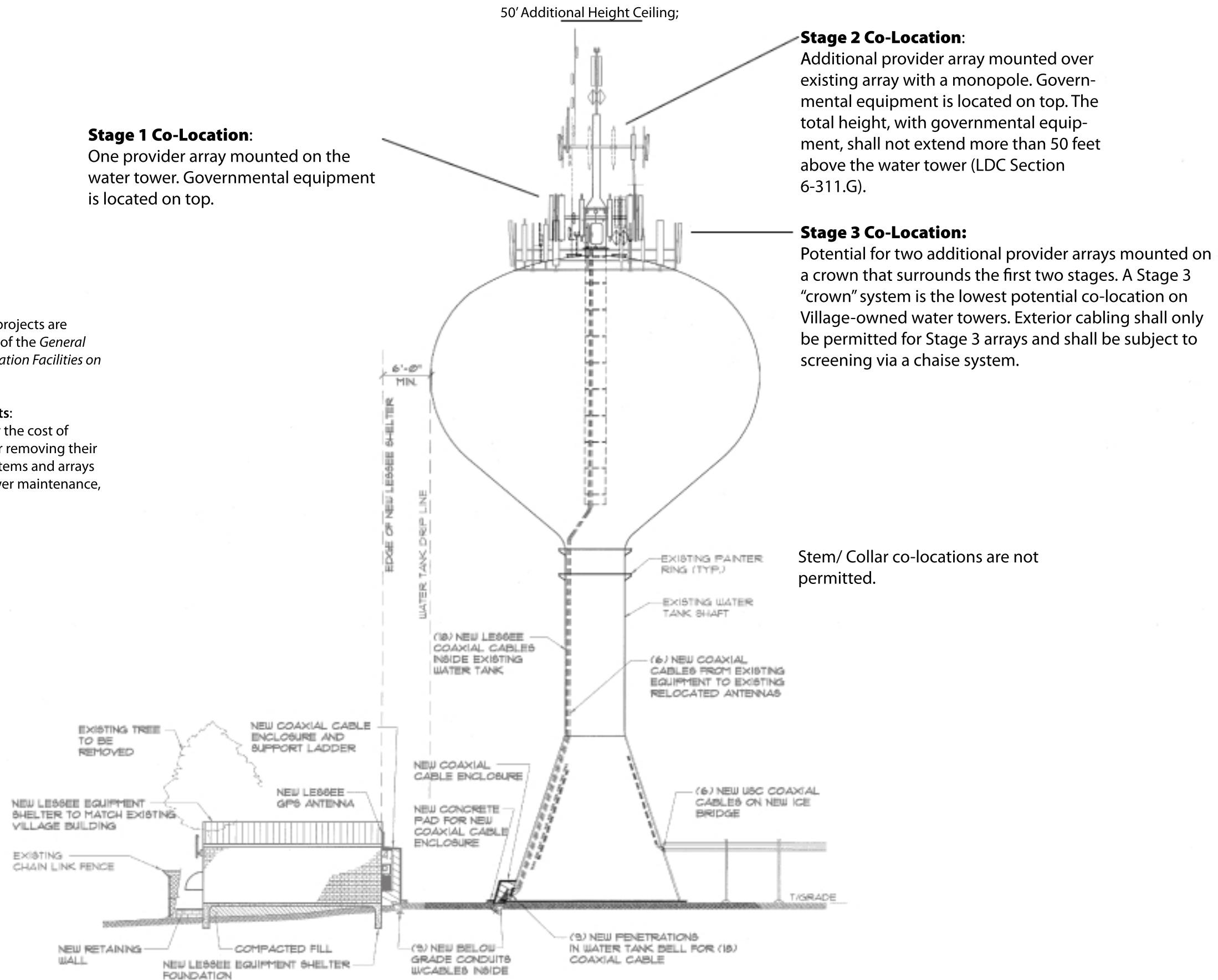
Planning and Review:

All water tower co-location projects are subject to the requirements of the *General Policy for Wireless Communication Facilities on Village-Owned Property*.

Rehabilitation Requirements:

Providers are responsible for the cost of temporarily disabling and/or removing their wireless communication systems and arrays for the purpose of water tower maintenance, which may include:

- Painting;
- Cleaning; and
- Structural Repair;



SCALE: N.T.S.

1