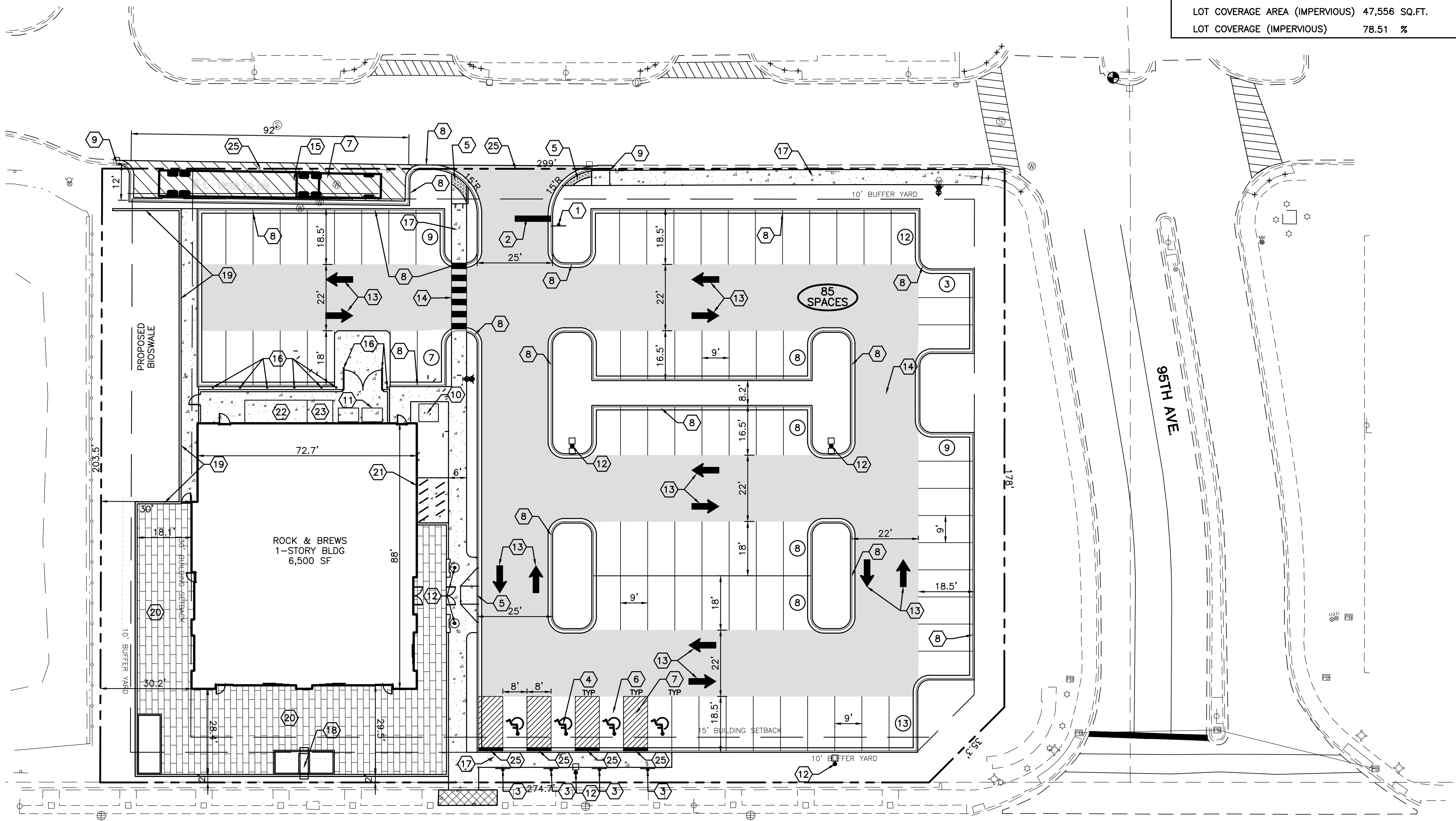


Layout Tab Name: C200 SITE PLAN, Images: Xrefs: 078532 - TBLK.dwg; 078532-X.dwg; 078532-P.dwg
 Last Saved By: ccooke, 9/16/2018 1:47:43 PM
 G:\DE\clients\Group Z Design\078532 Kiss Rock & Brews - Orland Park, IL\4.0 Disciplines\Civil\Coad\Cd\078532-C200-SIT.dwg Plotted By: ccooke, Jake Plotted: September 6, 2018, 1:50:39 PM



SITE DATA

GROSS SITE AREA	1.39 ACRES
ZONING	VILLAGE CENTER DISTRICT
PIN	27033000210000
WETLANDS	NONE
FLOOD PLAIN	NONE
BUILDING DATA:	
BUILDING SETBACKS	
FRONT	15 FT
SIDE	15 FT
REAR	30 FT
MAX BUILDING HEIGHT ALLOWED	70 FT
ACTUAL BUILDING HEIGHT	55 FT
GROSS FLOOR AREA	6,500 SQ.FT.
REQUIRED FLOOR AREA RATIO	1.0
PROPOSED FLOOR AREA RATIO	0.11
PARKING DATA:	
SPACES REQUIRED	65 (10/1000 SQ.FT.)
MAXIMUM SPACES ALLOWED	78
SPACES PROVIDED	85
ACCESSIBLE SPACES REQUIRED	4
ACCESSIBLE SPACES PROVIDED	4
SITE DATA:	
GREEN SPACE AREA	13,019 SQ.FT.
LOT COVERAGE AREA (IMPERVIOUS)	47,556 SQ.FT.
LOT COVERAGE (IMPERVIOUS)	78.51 %

SITE LEGEND

- INDICATES LIGHT DUTY PAVEMENT—SEE DETAILS FOR PAVEMENT COMPOSITION
- INDICATES HEAVY DUTY PAVEMENT—SEE DETAILS FOR PAVEMENT COMPOSITION
- INDICATES NEW CONCRETE PAVEMENT/SIDEWALK—SEE DETAILS FOR PAVEMENT COMPOSITION
- LIGHT POLES
- EXISTING CURB AND GUTTER
- POSITIVE SLOPED CURB
- INDICATES ROW PARKING COUNT
- INDICATES PARKING TOTAL FOR SURROUNDING AREA
- PROPERTY BOUNDARY

SITE KEY NOTES

- NO. DESCRIPTION
- 1 "STOP" SIGN, R1-1
- 2 24" WIDE STOP BAR, TRAFFIC WHITE PAINT
- 3 ACCESSIBLE PARKING SIGN
- 4 ACCESSIBLE PARKING SYMBOL
- 5 ACCESSIBLE RAMP WITH DETECTABLE WARNING
- 6 ACCESSIBLE PARKING SPACES & THEIR ACCESS AISLES SHALL BE 2% MAX. SLOPE IN ALL DIRECTIONS
- 7 PAINT 4" WIDE STRIPES @ 2'-0" O.C. @ 45° ANGLE, TRAFFIC YELLOW PAINT
- 8 CURB AND GUTTER, B6.12
- 9 BEGIN/END PROPOSED CURB AND GUTTER. SAWCUT EXISTING CURB TO PROVIDE CLEAN CONSTRUCTION JOINT.
- 10 CONCRETE TRANSFORMER PAD
- 11 DUMPSTER ENCLOSURE (SEE ARCHITECTURAL PLANS)
- 12 LIGHT POLE LOCATION
- 13 DIRECTIONAL ARROW, TRAFFIC WHITE PAINT
- 14 CROSSWALK, PAINT 12~4" WIDE STRIPES AT 2' O.C. CENTERED ON ENTRY, TRAFFIC WHITE PAINT
- 15 LOADING ZONE
- 16 CONCRETE BOLLARDS
- 17 CONCRETE 5' WALK
- 18 GUITAR MONUMENT SIGN
- 19 2-3' RETAINING WALL WITH GUARDRAIL
- 20 BRICK PAVERS, TYPE: TBD
- 21 GUITAR BICYCLE PARKING (9 SPACES ADDED)
- 22 WALK-IN COOLER
- 23 WALK-IN FREEZER
- 24 DEPRESSED CURB AND GUTTER

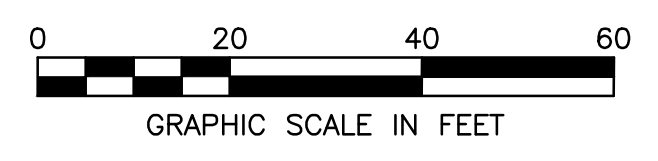
SITE NOTES

1. ALL DIMENSIONS, RADII AND COORDINATES ARE TO BACK OF CURB WHERE APPLICABLE. ALL RADII SHALL BE 4' UNLESS INDICATED OTHERWISE.
2. ALL PAVEMENT MARKING SHALL BE YELLOW IN COLOR UNLESS INDICATED OTHERWISE.
3. ADA DETECTABLE WARNINGS/TRUNCATED DOMES TO BE PROVIDED AT SIDEWALKS ON EITHER SIDE OF EACH DRIVEWAY CROSSING.
4. SEE ARCHITECTURAL PLANS FOR BUILDING DIMENSIONS.

BENCHMARK:

THE BASIS OF ELEVATIONS HEREON IS - NAVD 88.
 METAL DISC No. 50 FOUND - SEE DRAWING FOR LOCATION
 ELEVATION = 706.03'

THE EXISTING CONDITIONS SHOWN ARE BASED UPON A SURVEY PREPARED BY STEPHEN R. KREGER AND DATED 04/24/18.



REVISION

DATE

No.

PROJECT No: 078532
 DATE 08/20/18
 DES. J.L.
 DR. J.L.
 CKD. R.W.

1815 South Meyers Road
 Suite 950
 Oakbrook Terrace, IL 60181
 630.424.9080
 FAX: 630.485.3731



SITE IMPROVEMENT PLANS

ROCK & BREWS

9520 W. 143RD STREET
 ORLAND PARK, ORLAND TOWNSHIP, ILLINOIS

SITE PLAN

SHEET NO.

C200

