

RED ROBIN GOURMET BURGERS  
 15503 LAGRANGE ROAD  
 ORLAND PARK, IL 60462

LANDSCAPE PLAN  
 BID ISSUE: 4/21/08

CHIPMAN ADAMS LTD.  
 1111 N. WILSON ST.  
 1050 N. Northwest Highway, Suite 400  
 Park Ridge, Illinois 60068-1463  
 T 847-298-0900 F 847-298-0946



Revisions  
 ▲ REV PER PRELIM PLANNING & ENGINEERING: 2/29/08  
 ▲ REV. PER BURKE ENGINEERING / PLANNING: 3/21/08  
 ▲ BID ISSUE: 4/21/08  
 ▲ REV. PER BURKE ENGINEERING 4/23/08  
 ▲ BID DRAWING CLARIFICATION (PER PRE-BID MTG): 5/2/08  
 ▲ REV. PER BURKE ENG. / MWRD: 5/15/08  
 ▲ PER VILLAGE COMMENTS 6/04/08

I HEREBY CERTIFY THAT THESE PLANS HAVE BEEN PREPARED UNDER MY SUPERVISION AND THAT TO THE BEST OF MY KNOWLEDGE THEY COMPLY WITH ALL RULES, REGULATIONS AND ORDINANCES OF ORLAND PARK, IL RELATING TO STRUCTURES AND INTERFERENCE.

ARCHITECT:  
 Drawn By: \_\_\_\_\_ Checked By: \_\_\_\_\_  
 Scale: AS NOTED Date: 2/4/08  
 Job No.: 07-4685  
 Sheet No.: L1.0

| KEY | QTY  | SIZE | BOTANICAL NAME                               | COMMON NAME                   | REMARKS/SPACING |
|-----|------|------|--|-------------------------------|-----------------|
| ACF | 4    | 2.5" | Acer x. freemanii 'Autumn Blaze'             | Autumn Blaze Freeman Maple    | Central leader  |
| ANC | 6    | 6"   | Amelanchier canadensis                       | Shadblow Serviceberry         | Multi-stem      |
| ANS | 86   | 18"  | Andropogon scoparius                         | Little Bluestem               | 3' o.c.         |
| BMG | 26   | 24"  | Buxus x microphylla 'Glencoe'                | Chicagoland Green Boxwood     | 3' o.c.         |
| CMB | 12   | 18"  | Coreopsis verticillata 'Moonbeam'            | Moonbeam Coreopsis            | 3' o.c.         |
| EFC | 1790 | 3"   | Euryonymus fortunei var. coloratus           | Purpleleaf Wintercreeper      | 8" o.c.         |
| GTS | 13   | 2.5" | Gleditsia triacanthos var. inermis 'Skyline' | Skyline Thornless Honeylocust | Central leader  |
| HHR | 56   | 12"  | Hemerocallis 'Happy Returns'                 | Happy Returns Daylily         | 2' o.c.         |
| HWC | 36   | 12"  | Hemerocallis 'Little Wine Cup'               | Little Wine Cup Daylily       | 2' o.c.         |
| JCS | 41   | 24"  | Juniperus chinensis var. sargentii           | Sargent Juniper               | 4' o.c.         |
| JKC | 12   | 24"  | Juniperus chinensis 'Kalloys Compact'        | Kalloys Compact Juniper       | 4' o.c.         |
| JKC | 32   | 30"  | Juniperus chinensis 'Kalloys Compact'        | Kalloys Compact Juniper       | 4' o.c.         |
| PIC | 1    | 6"   | Picea pungens                                | Colorado Green Spruce         | Natural form    |
| RGM | 8    | 24"  | Ribes alpinum 'Green Mound'                  | Green Mound Alpine Currant    | 3' o.c.         |
| RHG | 156  | 24"  | Rhus aromatica 'Gro-Low'                     | Gro-Low Fragrant Sumac        | 4' o.c.         |
| SMK | 7    | 24"  | Syringa reticulata 'Miss Kim'                | Miss Kim Dwarf Lilac          | 4' o.c.         |
| TIR | 11   | 2.5" | Tilia americana 'Redmond'                    | Redmond American Linden       | Central leader  |
| TMD | 21   | 24"  | Taxus x media 'Densiformis'                  | Dense Yew                     | 3' o.c.         |
| TOT | 10   | 4"   | Thuja occidentalis 'TechnyII'                | Mission Arborvitae            | 4' o.c.         |
| VC  | 11   | 24"  | Viburnum carlesii                            | Koreanspice Viburnum          | 4' o.c.         |

**Landscape Notes**

Size and grading standards of plant materials shall conform to the latest edition of ANSI Z60.1, AMERICAN STANDARD FOR NURSERY STOCK, by the American Nursery & Landscape Association.

All plant materials shall be nursery grown stock and shall be free of any deformities, diseases or insect damage. Any materials with damaged or crooked/disfigured leaders, bark abrasions, sunscald, insect damage, etc. are not acceptable and will be rejected.

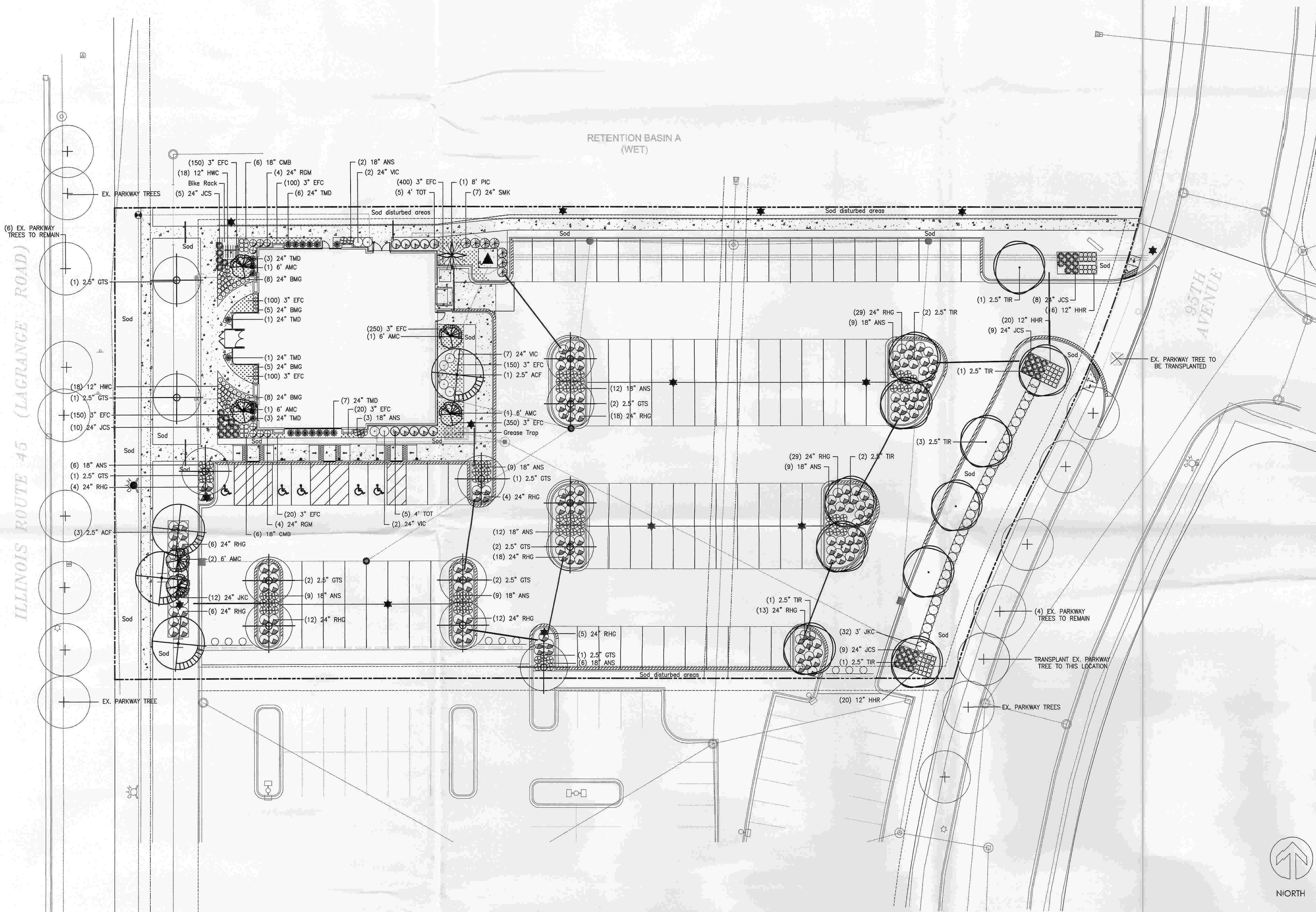
Trees not exhibiting a central (or single) leader will be rejected unless called out in the Plant Schedule as multi-stem.

Inspection and approval of all plant materials by the Landscape Architect is required prior to installation. Any materials installed without approval may be rejected.

The Village may reject any plant materials that are diseased, deformed, or otherwise not exhibiting superior quality requirements, including those described in the Plant Schedule.

The Contractor is responsible for providing and installing all materials shown on the Plan in accordance with plan design and materials quantities.

The Contractor is responsible for protecting underground utilities, sidewalks and other previously constructed site improvements.



**L1.0 LANDSCAPE PLAN**

SCALE: 1"=20'

BOARD APPROVED  
 CASE NO. 2008-131  
 DATE 6-16-08  
 W/CONDITIONS \_\_\_\_\_  
 W/O CONDITIONS \_\_\_\_\_

