

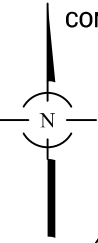


LEGEND

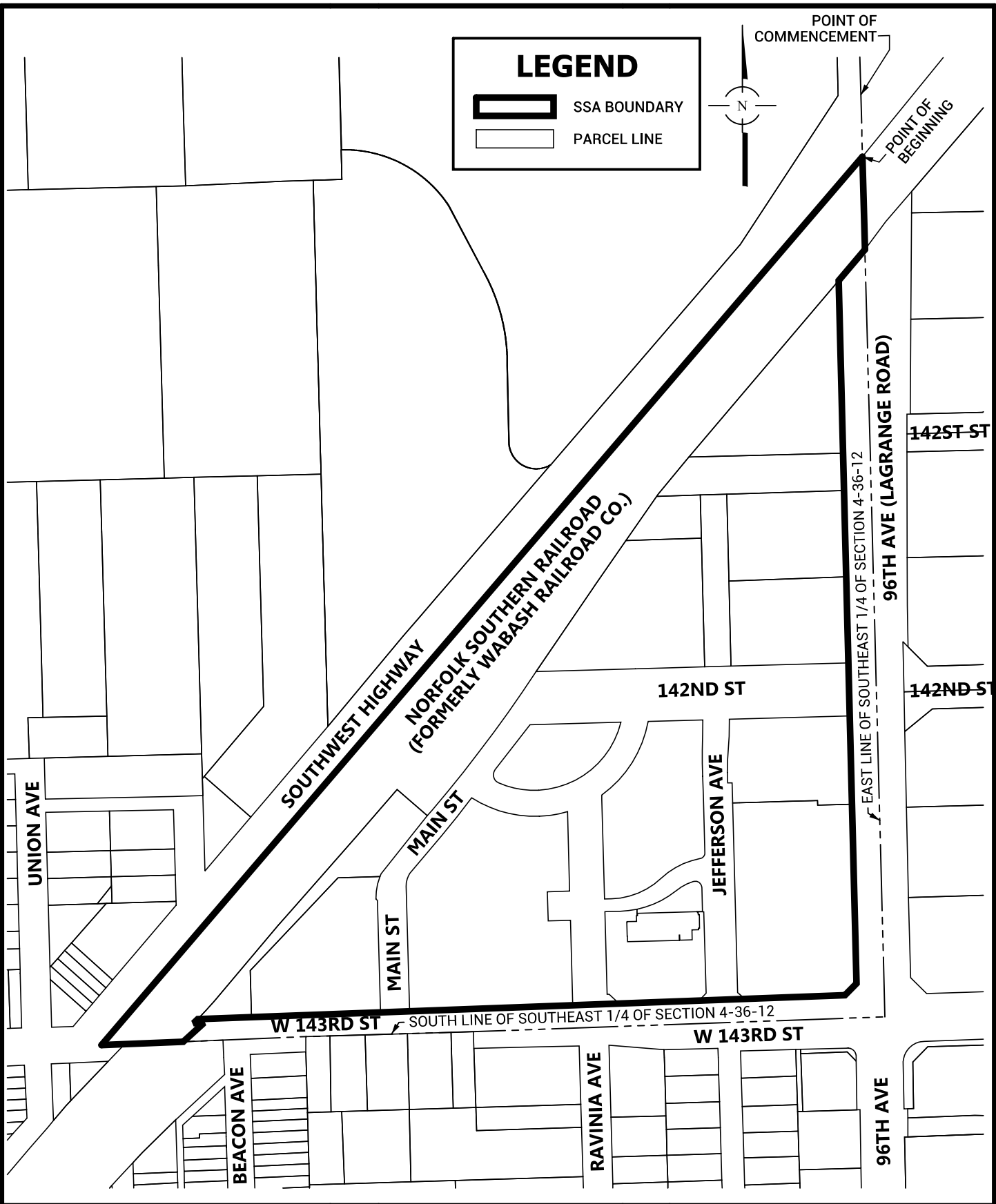
 SSA BOUNDARY

 PARCEL LINE



POINT OF COMMENCEMENT

POINT OF BEGINNING



9575 W. Higgins Road
 Suite 700
 Rosemont, Illinois 60018
 Phone: (847) 696-4060
 spacecoinc.com

DTOP SSA #12

VILLAGE OF ORLAND PARK, IL

SCALE 1" = 300'

0 300