

TECH 3 Consulting Group, Inc.

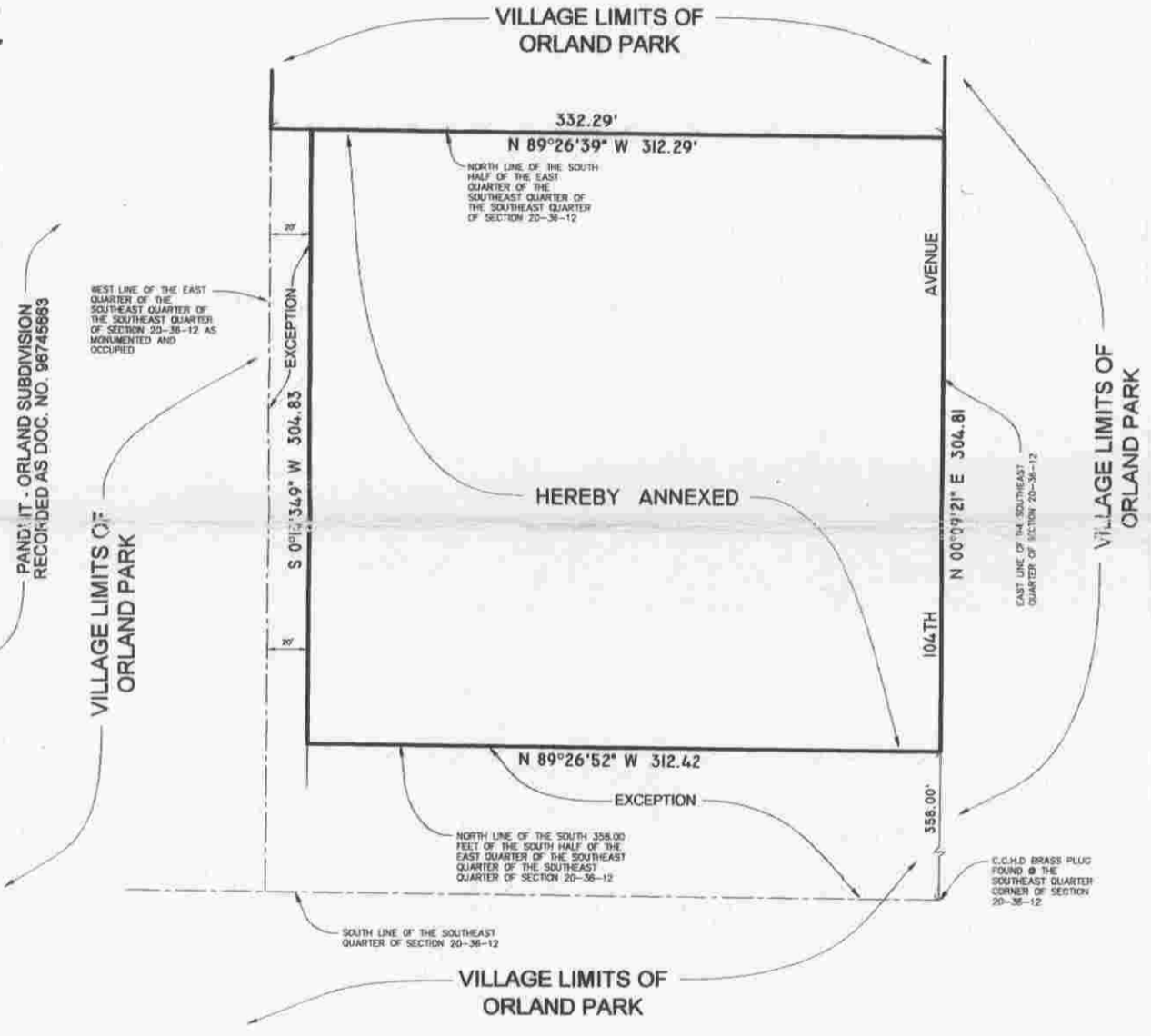
ENGINEERS SURVEYORS
737 West Exchange St. Crete, IL 60417
ph 708.672.4994 fax 708.672.3739

PLAT OF ANNEXATION
TO THE VILLAGE OF
ORLAND PARK, ILLINOIS
OF

THE SOUTH HALF (EXCEPT THE SOUTH 358.00 FEET THEREOF) OF THE EAST QUARTER OF THE SOUTHEAST QUARTER OF THE SOUTHEAST QUARTER OF SECTION 20, TOWNSHIP 36 NORTH, RANGE 12 EAST OF THE THIRD PRINCIPAL MERIDIAN, (EXCEPT THE WEST 20.00 FEET THEREOF) IN COOK COUNTY, ILLINOIS.



MAIL TO
RECORDERS BOX 324/EKF/SG
0806 515074



DOCUMENT
WITH THIS EXHIBIT



BASIS OF BEARINGS IS ASSUMED

OWNER:
THE PRAYER CENTER TRUST
16530 S. 104TH AVENUE
ORLAND PARK, ILLINOIS 60467

JOB NO. 07005

NOTE:
THE AREA ANNEXED SHALL EXTEND TO THE FAR SIDE OF ANY ADJACENT RIGHT OF WAY, STREET OR HIGHWAY AND SHALL INCLUDE ALL OF EVERY RIGHT OF WAY, STREET OR HIGHWAY WITHIN THE AREA ANNEXED.

PREPARED BY AND MAIL BACK TO: TECH 3 CONSULTING GROUP, INC.
737 W. EXCHANGE STREET
CRETE, ILLINOIS 60417

P.I.N.: 27-20-403-010

STATE OF ILLINOIS)
)SS
COUNTY OF WILL)

WE, TECH 3 CONSULTING GROUP, INC. DO HEREBY CERTIFY THAT WE PREPARED THIS PLAT OF ANNEXATION AND THAT IT IS A TRUE AND CORRECT REPRESENTATION OF SAME BASED ON OFFICIAL PLATS AND RECORDS. DIMENSIONS ARE GIVEN IN FEET AND DECIMAL PARTS THEREOF.

DATED THIS 23RD DAY OF MARCH, A.D. 2007

William J. Stebbins
ILLINOIS PROFESSIONAL LAND SURVEYOR NO. 2430
LICENSE EXPIRES: NOVEMBER 30, 2006

ILLINOIS PROFESSIONAL DESIGN FIRM NO. 184-002235

