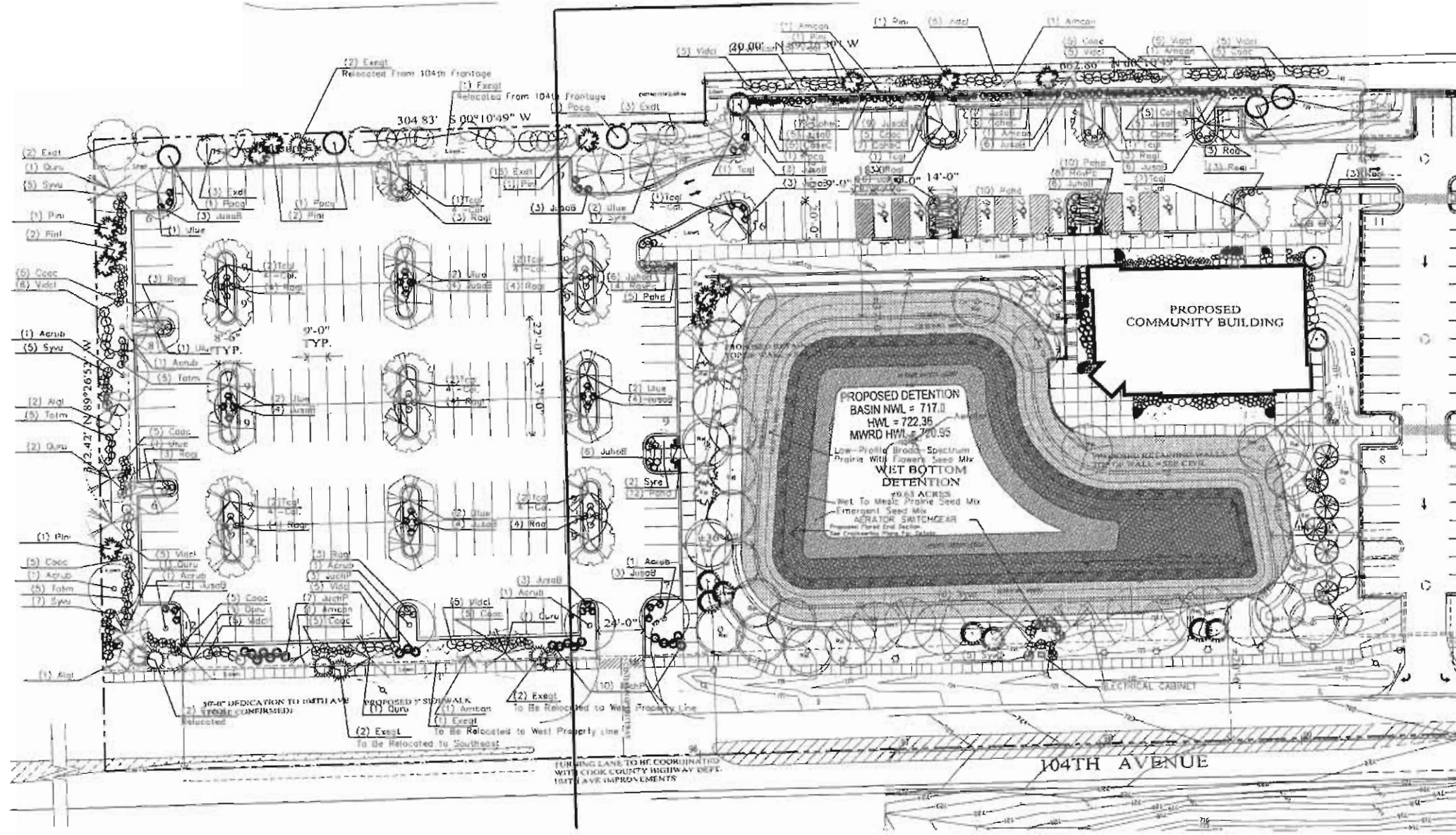


LANDSCAPE NOTES

- PLANT MATERIALS SHOWN IN THE PLANT SCHEDULE ARE FOR CONFORMANCE ONLY. THE CONTRACTOR IS RESPONSIBLE FOR PROVIDING AND INSTALLING ALL MATERIALS SHOWN IN THE PLANT SCHEDULE AND FOR MAINTAINING THEM THROUGHOUT THE PROJECT.
- ALL PLANT MATERIALS SHALL BE SUPPLIED BY A REPUTABLE NURSERY AND SHALL BE FIRST-TYPE AND UNIFORM IN SIZE AND QUALITY. ANY MATERIALS WITH DAMAGED OR DISTORTED LEAVES, BRANCHES, BARK, OR ROOTS SHALL BE REJECTED UNLESS ACCEPTABLE AND THE CONTRACTOR SHALL BE RESPONSIBLE FOR REPLACING THEM.
- ALL PLANTING OPERATIONS SHALL BE COMPLETED IN ACCORDANCE WITH STANDARD INDUSTRY PRACTICES. THIS MAY INCLUDE, BUT NOT BE LIMITED TO, PROPER PLANTING DEPTH, PROPER PLANTING MEDIA, PROPER STAKING AND SUPPORT, PROPER WATERING, PROPER FERTILIZATION, PROPER MULCHING, AND PROPER MAINTENANCE THROUGHOUT THE CONSTRUCTION PERIOD.
- ALL PLANT MATERIALS SHALL BE PROTECTED AND APPROVED BY THE LANDSCAPE ARCHITECT PRIOR TO INSTALLATION. ANY MATERIALS INSTALLED WITHOUT APPROVAL MAY BE REJECTED.
- THE CONTRACTOR SHALL GUARANTEE PLANT MATERIALS FOR A PERIOD OF ONE YEAR FROM DATE OF ACCEPTANCE BY OWNER. THE CONTRACTOR SHALL REMOVE PROBLEMATIC PLANTS AND REPLACE THEM AT THE TIME OF ACCEPTANCE. DURING THE GUARANTEE PERIOD, DEAD OR DAMAGED MATERIALS SHALL BE REPLACED AT NO COST TO THE OWNER. AT THE END OF THE GUARANTEE PERIOD, THE CONTRACTOR SHALL OBTAIN FINAL ACCEPTANCE FROM THE OWNER.
- ANY EXISTING TREES TO BE RETAINED SHALL BE PROTECTED FROM SOIL COMPACTION AND OTHER DAMAGES THAT MAY OCCUR DURING CONSTRUCTION BY ERECTING FENCING AROUND SUCH TREES AT A DISTANCE OF 8.5' FROM THE TRUNK.
- ALL GRADE CLUMPS, OTHER VEGETATION, STONES, ETC., SHALL BE REXED ON SIDEWALKS, DRIVEWAYS, AND PARKING AREAS PRIOR TO ANY CONSTRUCTION ACTIVITIES.
- ANY AREAS TO BE LOANED AND SEEDS WHICH HAVE NOT BEEN OBTAINED BY CONSTRUCTION ACTIVITIES SHALL BE REPLACED AT NO COST TO THE OWNER. CARE SHOULD BE TAKEN TO NOT PLACE GREATER THAN 1" SOIL OVER EXPOSED ROOTS OF EXISTING TREES OF SUCH SIZE.
- THE CONTRACTOR SHALL VERIFY THE LOCATIONS OF ALL UNDERGROUND UTILITIES PRIOR TO ANY CONSTRUCTION ACTIVITIES. THE CONTRACTOR SHALL BE RESPONSIBLE FOR ANY AND ALL DAMAGES, INCLUDING ERECTION, ETC., WHICH IS INCURRED DURING PLANTING OPERATIONS.
- ALL PLANTING OPERATIONS SHALL CONFORM TO THE LATEST EDITION OF THE AMERICAN STANDARDS FOR NURSERY STOCK BY THE AMERICAN NURSERY & LANDSCAPE ASSOCIATION.
- REFER TO PLAT OF SURVEY FOR LEGAL DESCRIPTION, BOUNDARY DIMENSIONS AND EXISTING UTILITIES.
- REFER TO ARCHITECTURAL PLANS FOR BUILDING AND SITE INFORMATION.
- REFER TO ENGINEERING PLANS FOR DETERMINING CALCULATIONS, UTILITY LOCATIONS, TOPOGRAPHIC INFORMATION AND THE LIKE.
- PRELIMINARY LANDSCAPE PLAN ALL AREAS AND DIMENSIONS ARE APPROXIMATE.
- ALL PLANT MATERIALS ON THIS PLANNING PLAN REPRESENTS THE INTEREST AND INTENT OF THE ARCHITECT. THE CONTRACTOR SHALL BE RESPONSIBLE FOR VERIFYING THE LOCATION OF ALL UTILITIES AND MODIFICATIONS IN THE SITE APPROXIMATIONS AND THE AVAILABILITY OF PLANT MATERIALS AT THE TIME OF INSTALLATION. ANY SUCH CHANGES MUST BE APPROVED BY THE ARCHITECT IN WRITING.
- ALL PLANT MATERIAL SHALL BE PLANTED WITH A MINIMUM OF SIX INCHES OF ORGANIC SOIL AND MULCHED WITH A SHROUDED BARK MATERIAL TO A MINIMUM 3" DEPTH.
- ALL LAWN AREAS ON THIS PLAN SHALL BE ESTABLISHED USING SEED.
- THIS LANDSCAPE PLAN ASSUMES THE SITE WILL BE PREPARED WITH TOP SOIL SUITABLE FOR THE ESTABLISHMENT OF LANDSCAPE MATERIALS. PRESENT OR FUTURE ADDITIONAL TOP SOIL IS REQUIRED IF IT IS UP TO THE LANDSCAPE CONTRACTOR TO PROVIDE PROPOSED SPECIFICATIONS WILL BE PREPARED BY THE CONTRACTOR FOR THIS LANDSCAPE PLAN.
- CONTRACTOR MUST VERIFY ALL QUANTITIES AND OBTAIN ALL PROPER PERMITS AND LICENSES FROM THE PROPER AUTHORITIES.
- ALL MATERIAL MUST MEET INDUSTRY STANDARDS AND THE LANDSCAPE ARCHITECT HAS THE RIGHT TO REJECT ANY POOR MATERIAL OR WORKMANSHIP.
- LANDSCAPE ARCHITECT IS NOT RESPONSIBLE FOR UNUSUAL SITE CONDITIONS.
- ALL PLANTINGS SHALL BE SPACED EQUAL DISTANT, BACK FILLED WITH AMENDED SOIL IN A HOLE THREE TIMES THE ROOTBALL DIAMETER, WATERED, FERTILIZED, PRUNED, AND HAVE ALL TAGS AND NOTES REMOVED.
- TREES SHALL BE STAKED AND SHED, AND HAVE A WATERING SCHEDULE AT 14 DAYS.
- ALL BIDS TO BE BORNED 12" TO 24" ABOVE GRADE AND MEET DRAINAGE REQUIREMENTS.
- LAWN AND BEE AREAS SHALL BE ROTOTILLED, RAKED OF CLUMPS AND DEBRIS.
- CONTRACTOR SELECTED FOR NURSERY PLANT INSTALLATION SHOULD HAVE A MINIMUM OF FIVE YEARS EXPERIENCE IN THE FIELD. SUPERVISOR SHOULD BE PRESENT ON SITE DURING LANDSCAPE WORK FOR NURSERY AREAS THAT OBTAIN NON-NATIVE AND NATIVE PLANTS BY GENUS AND SPECIES.
- ALL SEED SUPPLIED TO THE SITE SHOULD BE TAGGED WITH SEED SPECIES, WEIGHT AND DOCUMENTATION OF PLUS TESTING. SEED MUST MEET A MINIMUM 90% PLUS PER SPECIES AS VERIFIED BY INDEPENDENT LABORATORY TEST RESULTS NO MORE THAN A YEAR OLD FOR PERMANENT OR TEMPORARY PLANTINGS. TEST RESULTS SHALL BE NO MORE THAN 6 MONTHS OLD.
- FERTILIZER SHALL NOT BE USED IN AREAS OF NATIVE LANDSCAPING.
- ALL NATIVE SEED AND PLANT MATERIAL SHALL BE OBTAINED FROM SOURCES WITHIN A 250 MILE RADIUS FROM THE PROJECT SITE TO MAINTAIN LOCAL ECOSYSTEMS.
- PROPAGATION OF ORGANIC SEEDS WILL BE USED FOR PLANTING AREAS. PROPAGATION CONTROL SYSTEM SHALL BE IN PLACE AND APPROVED EQUAL WHEN BROADCAST SEEDING METHODS ARE USED. TAGS SHALL BE BROADCAST SEPARATELY FROM THE FLOWERS.
- WHEN BROADCAST SEED APPLICATION BETWEEN AREAS USED SEED IS TO BE APPLIED AT DOUBLE THE INTENDED RATE (EXCEPTIONS TEMPORARY MAY BE SPECIFIED).
- IF AT THE TIME OF NATIVE AREA SEEDING WHEN LEVELS CANNOT BE CONTROLLED, EXISTENT PLANTS WILL BE INSTALLED AT A RATE OF 2.500 TO 4.000 PER ACRE (BASED ON THE AREA HAVING UP TO ONE FOOT OF HURRICANE AT THE 100% VC 710 TO 712) AND WILL BE PROTECTED FROM HERBIVORY.
- NATIVE AREA SEEDING SHALL OCCUR ANY TIME BETWEEN OCTOBER 15TH AND JUNE 15TH.
- PROPOSED SITE CONDITIONS, SEED SOURCES AND SEEDING METHODS SHALL BE APPROVED BY THE ARCHITECT. SEEDING SHALL BE APPROVED BY THE ARCHITECT. SEEDING SHALL BE APPROVED BY THE ARCHITECT. SEEDING SHALL BE APPROVED BY THE ARCHITECT.



PROPOSED LANDSCAPE PLAN

SCALE: 1" = 30'-0"



Plant List

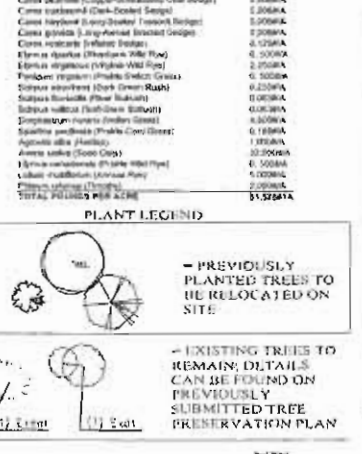
Code	Scientific Name	Common Name	Planting Size	Quantity
(1)	Quercus sp.	White Oak	12" - 18" DB	1
(2)	Pinus sp.	Pinus	12" - 18" DB	1
(3)	Liriodendron sp.	Tiger Balm	12" - 18" DB	1
(4)	Aucuba sp.	Shoebush	12" - 18" DB	1
(5)	Syzygium sp.	Wax Plant	12" - 18" DB	1
(6)	Juniper sp.	Juniper	12" - 18" DB	1
(7)	Thuja sp.	Thuja	12" - 18" DB	1
(8)	Yucca sp.	Yucca	12" - 18" DB	1
(9)	Philodendron sp.	Philodendron	12" - 18" DB	1
(10)	Agave sp.	Agave	12" - 18" DB	1
(11)	Yucca sp.	Yucca	12" - 18" DB	1
(12)	Philodendron sp.	Philodendron	12" - 18" DB	1
(13)	Yucca sp.	Yucca	12" - 18" DB	1
(14)	Philodendron sp.	Philodendron	12" - 18" DB	1
(15)	Yucca sp.	Yucca	12" - 18" DB	1
(16)	Philodendron sp.	Philodendron	12" - 18" DB	1
(17)	Yucca sp.	Yucca	12" - 18" DB	1
(18)	Philodendron sp.	Philodendron	12" - 18" DB	1
(19)	Yucca sp.	Yucca	12" - 18" DB	1
(20)	Philodendron sp.	Philodendron	12" - 18" DB	1

LaFayette Home Nursery Seed Mix

Species	Quantity
Low-Profile Broad-Spectrum Prairie with Flowers	10000
Low-Profile Broad-Spectrum Prairie with Flowers	10000
Low-Profile Broad-Spectrum Prairie with Flowers	10000
Low-Profile Broad-Spectrum Prairie with Flowers	10000
Low-Profile Broad-Spectrum Prairie with Flowers	10000
Low-Profile Broad-Spectrum Prairie with Flowers	10000
Low-Profile Broad-Spectrum Prairie with Flowers	10000
Low-Profile Broad-Spectrum Prairie with Flowers	10000
Low-Profile Broad-Spectrum Prairie with Flowers	10000
Low-Profile Broad-Spectrum Prairie with Flowers	10000

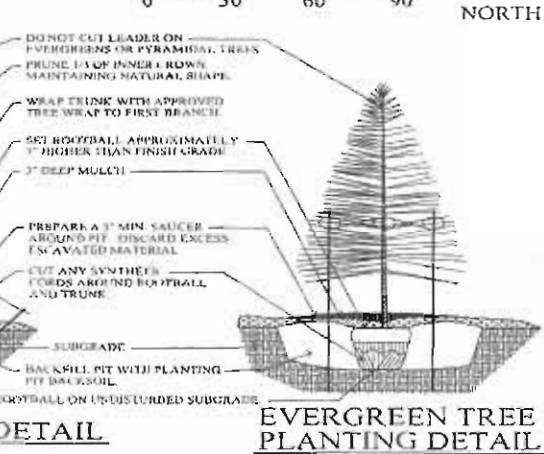
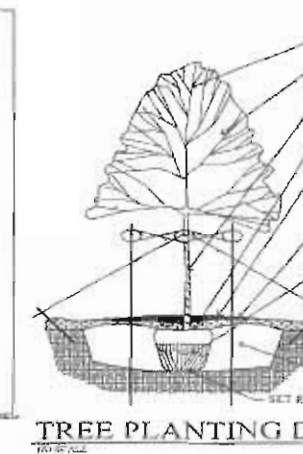
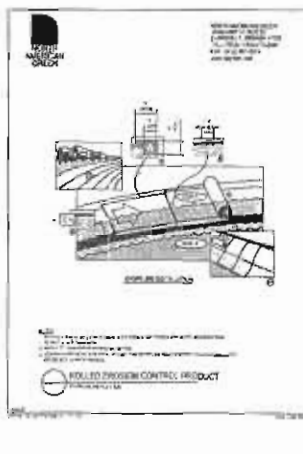
LaFayette Home Nursery

Species	Quantity
Low-Profile Broad-Spectrum Prairie with Flowers	10000
Low-Profile Broad-Spectrum Prairie with Flowers	10000
Low-Profile Broad-Spectrum Prairie with Flowers	10000
Low-Profile Broad-Spectrum Prairie with Flowers	10000
Low-Profile Broad-Spectrum Prairie with Flowers	10000
Low-Profile Broad-Spectrum Prairie with Flowers	10000
Low-Profile Broad-Spectrum Prairie with Flowers	10000
Low-Profile Broad-Spectrum Prairie with Flowers	10000
Low-Profile Broad-Spectrum Prairie with Flowers	10000
Low-Profile Broad-Spectrum Prairie with Flowers	10000



Plant Table (Previously Planted Some Relocated)

Code	Scientific Name	Common Name	Planting Size	Quantity
(1)	Quercus sp.	White Oak	12" - 18" DB	1
(2)	Pinus sp.	Pinus	12" - 18" DB	1
(3)	Liriodendron sp.	Tiger Balm	12" - 18" DB	1
(4)	Aucuba sp.	Shoebush	12" - 18" DB	1
(5)	Syzygium sp.	Wax Plant	12" - 18" DB	1
(6)	Juniper sp.	Juniper	12" - 18" DB	1
(7)	Thuja sp.	Thuja	12" - 18" DB	1
(8)	Yucca sp.	Yucca	12" - 18" DB	1
(9)	Philodendron sp.	Philodendron	12" - 18" DB	1
(10)	Agave sp.	Agave	12" - 18" DB	1
(11)	Yucca sp.	Yucca	12" - 18" DB	1
(12)	Philodendron sp.	Philodendron	12" - 18" DB	1
(13)	Yucca sp.	Yucca	12" - 18" DB	1
(14)	Philodendron sp.	Philodendron	12" - 18" DB	1
(15)	Yucca sp.	Yucca	12" - 18" DB	1
(16)	Philodendron sp.	Philodendron	12" - 18" DB	1
(17)	Yucca sp.	Yucca	12" - 18" DB	1
(18)	Philodendron sp.	Philodendron	12" - 18" DB	1
(19)	Yucca sp.	Yucca	12" - 18" DB	1
(20)	Philodendron sp.	Philodendron	12" - 18" DB	1



arete 3 ltd
design group
15045 South West Creek Drive
Tinley Park, Illinois 60477
708-342-1250 ph.
708-342-1240 fx.
arete3.com

PROPOSED LANDSCAPE PLAN

ORLAND PARK PRAYER CENTER PARKING LOT EXPANSION

IN ORLAND PARK, IL

FOR ORLAND PARK PRAYER CENTER

BOARD APPROVED

E.N.O. 2008-0755

12-1-08

CONDITIONS

LP-1

JOB #: 06152
ORIGIN: 01-30-07
REV. DATE: 08-26-08

© COPYRIGHT 2007 ARETE 3 LTD. ALL RIGHTS RESERVED