

# PLANT SCHEDULE

| QTY   | KEY   | BOTANICAL NAME  | COMMON NAME                       | SIZE        |
|---|-------|---|-----------------------------------|-------------|
| <b>SHADE TREES</b>  |       |   |                                   |             |
| 4   | ACEQ  | Acer platanoides 'Emerald Queen'  | Emerald Queen Norway Maple        | 2.5' cal.   |
| 3   | ACFR  | Acer x freemanii 'Joffersred'   | Autumn Blaze Freeman Maple        | 2.5' cal.   |
| 7   | GLSK  | Gleditsia triacanthos var. inermis 'Skyocoe'  | Skyline Thornless Honeylocust     | 2.5' cal.   |
| 3   | PYAR  | Pyrus calleryana 'Aristocrat'   | Aristocrat Pear                   | 2.5' cal.   |
| 4   | PYCH  | Pyrus calleryana 'Chanticleer'  | Chanticleer Pear                  | 2.5' cal.   |
| <b>EVERGREEN TREES</b>  |       |   |                                   |             |
| 5   | THEM  | Thuja occidentalis 'Smaragd'  | Emerald Eastern Arborvitae        | 6' ht.      |
| <b>ORNAMENTAL TREES</b>   |       |   |                                   |             |
| 2   | AMAB  | Amelanchier grandiflora 'Autumn Brilliance'   | Apple Serviceberry                | 6' ht.      |
| 6   | MALE  | Malus 'Leprechaun'  | Leprechaun Crabapple              | 6' ht.      |
| <b>EVERGREEN SHRUBS</b>   |       |   |                                   |             |
| 75  | JUKC  | Juniperus chinensis 'Kallias Compact'   | Kallias Compact Juniper           | 18-24" spr. |
| <b>DECIDUOUS SHRUBS</b>   |       |   |                                   |             |
| 16  | FOBR  | Forsythia viridissima 'Bronxensis'  | Bronx Forsythia                   | 24" ht.     |
| 103   | RHGL  | Rhus aromatica 'Grow Low'   | Grow Low Sumac                    | 24" ht.     |
| 44  | SPFR  | Spiraea x bumalda 'Froebelii'   | Froebel Spiraea                   | 24" ht.     |
| 10  | SYMK  | Syringa patula 'Miss Kim'   | Dwarf Lilac                       | 30-36" ht.  |
| 36  | VIDE  | Viburnum dentatum 'Synnovesed'  | Chicago Lustre Arrowwood Viburnum | 30-36" ht.  |
| <b>GROUNDCOVER, PERENNIALS AND VINES</b>  |       |   |                                   |             |
| 14  | CLTE  | Clematis terniflora   | Sweet Autumn Clematis             | 2.5' qt.    |
| 281   | HESO  | Hemerocallis 'Stella de Oro'  | Daylily                           | 1 gal.      |
| 147   | HEWC  | Hemerocallis 'Little Wine Cup'  | Daylily                           | 1 gal.      |
| 56  | HOFR  | Hosta 'Frances'   | Hosta                             | 1 gal.      |
| 41  | LSP   | Liatris spicata   | Spike Blazingstar                 | 1 gal.      |
| 108   | PELS  | Perovskia atriplicifolia 'Little Spire'   | Russian Sage                      | 1 gal.      |
| 59  | RUFG  | Rudbeckia fulgida 'Goldsturm'   | Black Eyed Susan                  | 1 gal.      |
| <b>ORNAMENTAL GRASSES</b>   |       |   |                                   |             |
| 186   | CAKF  | Calamagrostis x acutiflora 'Karl Foerster'  | Feather Reed Grass                | 1 gal.      |
| <b>MISC</b>   |       |   |                                   |             |
|   | SOD   | Sod all areas of disturbance  |                                   | sq. ft.     |
|   | MULCH | Existing tree transplants   |                                   | cy.         |
|   | GRATE | Ironsmith Tree Grate Starburst Series 2 Model 7222-2; Cast Iron 46" x 72" with 3/8" max. slot openings for ADA compliance; Powder Coat Black; Galvanized steel angle frames |                                   | ea.         |
| <b>NOTES:</b>   |       |   |                                   |             |
| 1. No tree shall be planted within a sight triangle.  |       |   |                                   |             |
| 2. Trees shall have a minimum spacing of 20 feet from light poles, street signs, fire hydrants and any other such items that may, in the opinion of the public works director, require similar intervals.   |       |   |                                   |             |
| 3. Provide strongly rooted sod, not less than 2 years old and free of weeds and undesirable native grasses. Provide only sod capable of growth and development when planted (viable, not dormant). Provide sod composed principally of an approved Kentucky Blue Grass blend containing a minimum of four improved varieties. |       |   |                                   |             |

## SITE CALCULATIONS

|                                   |            |
|-----------------------------------|------------|
| TOTAL SITE AREA:                  | 58,120 SF. |
|                                   | 1.33 AC.   |
| NUMBER OF REGULAR PARKING STALLS: | 63         |
| NUMBER OF HANDICAP STALLS:        | 3          |
| TOTAL NUMBER OF STALLS:           | 66         |

## SITE REQUIREMENTS

### BUFFER YARD LANDSCAPING

ALL BUFFER YARD PLANTINGS SHOULD BE AT LEAST 30% EVERGREEN FOR EFFECTIVE YEAR ROUND SCREENING AND VISUAL INTEREST.

NORTH: 337.43 LF. (N/A) EAST: 209.74 LF. (N/A) SOUTH: 360.70 LF. (N/A) WEST: 100.43 LF.

| MATERIAL: WEST - BUFFER 'C' | REQUIRED | PROVIDED  |
|-----------------------------|----------|---|
| CANOPY TREE                 | 4.5      | 5 (2 at n. parking lot perimeter & 1 n.w. of drive through) |
| UNDERSTORY TREE             | 1.8      | 2   |
| SHRUBS                      | 18       | 54  |

### INTERIOR LOT LANDSCAPING

ONE (1) TREE IS REQUIRED PER 10,000 SQUARE FEET OF LOT AREA

LOT AREA: 58,120

| MATERIAL        | REQUIRED | PROVIDED              |
|-----------------|----------|-----------------------|
| CANOPY TREE     | 5.8      | 9                     |
| EVERGREEN TREE  | 0        | 8                     |
| UNDERSTORY TREE | 0        | 9 (3 ARE TRANSPLANTS) |
| SHRUBS          | 0        | 129                   |

### PARKWAY LANDSCAPING

N/A

### PARKING LOT LANDSCAPING

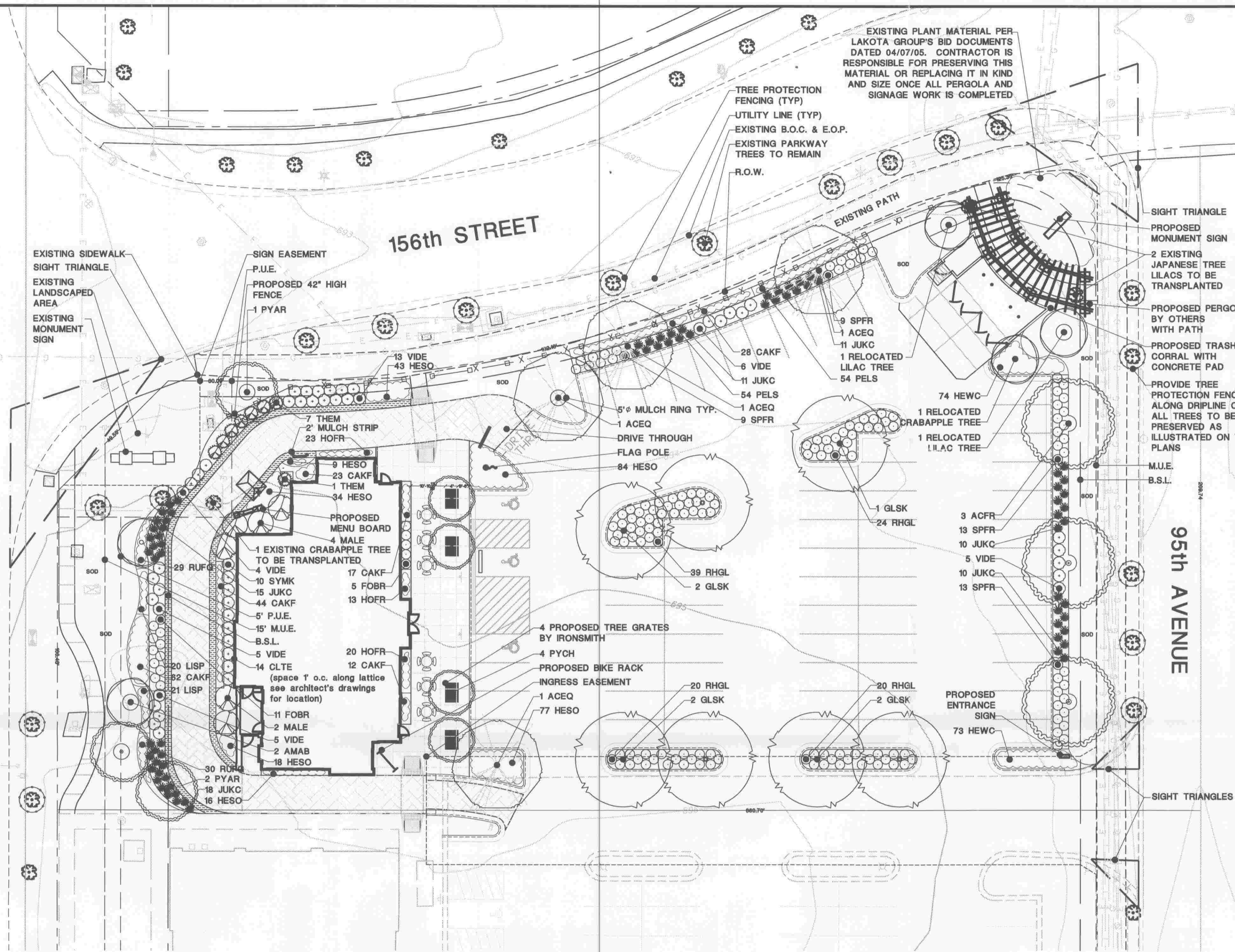
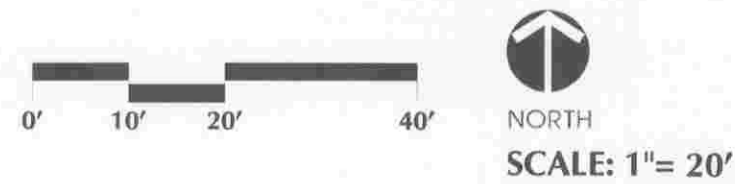
ALL PARKING LOT AREAS SHALL BE SCREENED FROM THE VIEW OF ADJACENT PROPERTIES AND STREETS BY EVERGREEN PLANTINGS THAT WILL ATTAIN A HEIGHT OF THREE (3) FEET WITHIN THREE (3) YEARS OR PROVIDE A THREE (3) FOOT BERM OR LOW WALL/FENCE. THE USE OF SHRUBS AND GROUND COVERS IS ENCOURAGED IN PARKING AREA ISLANDS AND ALONG THE BORDERS OF PARKING AREAS.

### PARKING LOT ISLAND LANDSCAPING

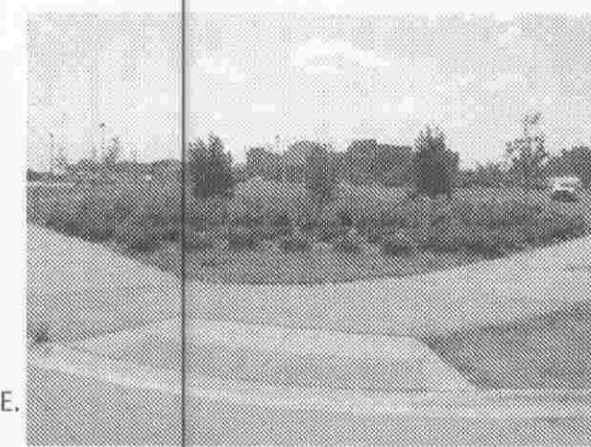
REQUIRED AREA OF LANDSCAPE ISLANDS SHALL CORRESPOND TO THE AREA OF ONE (1) PARKING SPACE FOR EVERY SEVEN (7) ACTUAL PARKING SPACES EXCLUSIVE OF REQUIRED BUFFER YARDS AND FOUNDATION PLANTING AREAS. EACH ISLAND SHALL INCLUDE AT LEAST ONE (1) TREE AND ONE (1) SHRUB PER TWO HUNDRED (200) SQUARE FEET OF ISLAND GREEN AREA.

| MATERIAL    | REQUIRED | PROVIDED |
|-------------|----------|----------|
| CANOPY TREE | 5        | 7        |
| SHRUBS      | 5        | 103      |

# LANDSCAPE PLAN



## PHOTOS



EXISTING VEGETATION AT CORNER OF 95TH AVENUE & 156TH STREET



EXISTING LOWE'S SIGN VEGETATION AT CORNER OF 156TH STREET & LaGRANGE ROAD

**SEC Group, Inc.**  
An HR Green Company

651 Prairie Pointe Drive, Suite 201  
Yorkville, Illinois 60550  
T. 630.553.7560 F. 630.553.7646  
www.secgroupinc.com

McHenry, IL • Yorkville, IL • New Lenox, IL • Chicago, IL

**CONSULTANTS**  
CIVIL ENGINEER / SURVEYOR  
SEC Group, Inc. an HR Green Company  
420 N. Front Street, Suite 100  
McHenry, Illinois 60050  
T. 815.385.1778 F. 815.385.1781

FOR REVIEW ONLY  
NOT FOR CONSTRUCTION

# Chick-Fil-A Landscape Plan

Orland Park, Illinois

BOARD APPROVED  
CASE NO. 2009-0344  
DATE 10-5-09  
W/CONDITIONS  
W/O CONDITIONS

Drawing File Name

Revisions:

1. August 19, 2009
2. September 18, 2009
- 3.
- 4.
- 5.
- 6.
- 7.
- 8.
- 9.
- 10.

Issue Date: July 10, 2009

Drawn By: MC Reviewed By: DR

Project No. 090105-CFAI

Sheet No. LP.1

The reproduction, copying or other use of this drawing without the written consent of SEC Group, Inc. is prohibited.  
© 2009 SEC Group, Inc.

THIS PROJECT SHALL BE CONSTRUCTED IN ACCORDANCE WITH THE SPECIFICATIONS, ORDINANCES, RULES, REGULATIONS AND DETAILS, AS APPLICABLE, OF THE:

- VILLAGE OF ORLAND PARK'S LANDSCAPE ORDINANCE
- ILLINOIS ENVIRONMENTAL PROTECTION AGENCY
- "STANDARD SPECIFICATIONS FOR WATER AND SEWER MAIN CONSTRUCTION IN ILLINOIS", LATEST EDITION.
- STATE OF ILLINOIS STANDARD SPECIFICATIONS FOR ROAD AND BRIDGE CONSTRUCTION, LATEST EDITION.
- "AMERICAN STANDARD PRACTICE FOR ROADWAY LIGHTING" AND "THE NATIONAL ELECTRIC CODE", LATEST EDITION
- PROJECT PLANS WITH SPECIFICATIONS INDICATED THEREIN.

IN CASE OF CONFLICT, THE MOST STRINGENT STANDARDS AND ORDINANCES SHALL TAKE PRECEDENCE AND SHALL GOVERN.

CALL JULIE TOLL FREE 1(800)892-0123 OPERATES 24 HOURS A DAY 160 DAYS A YEAR

WARNING  
CALL BEFORE YOU DIG  
CALL 1(800)892-0123 48 HOURS BEFORE YOU DIG

