

LANDSCAPE PLAN  
GENERAL NOTES

1.

THE LANDSCAPE CONTRACTOR SHALL COMPLY WITH ALL PROVISIONS AND DIRECTIONS OF THE SPECIFICATIONS.
2.

THE LANDSCAPE CONTRACTOR SHALL PROTECT ALL WORK FROM DAMAGE BY OTHER UNTIL THE WORK IS COMPLETE AND ACCEPTED BY THE SCHOOL DISTRICT.
3.

THE LANDSCAPE CONTRACTOR SHALL COORDINATE HIS WORK WITH ALL OTHER TRADES.
4.

EXACT LOCATION OF ALL UNDERGROUND UTILITIES SHALL BE DETERMINED AND IDENTIFIED IN THE FIELD BY THE LANDSCAPE CONTRACTOR.
5.

THE CONTRACTOR SHALL AVOID ALL EXISTING UTILITIES-UNDERGROUND AND OVERHEAD WHERE APPLICABLE. WHERE UNDERGROUND UTILITIES EXISTS, FIELD ADJUSTMENTS MUST BE APPROVED BY THE LANDSCAPE ARCHITECT PRIOR TO INSTALLATION. NEITHER THE OWNER NOR THE LANDSCAPE ARCHITECT ASSUMES ANY RESPONSIBILITY WHATSOEVER, IN RESPECT TO THE CONTRACTORS ACCURACY IN LOCATING THE INDICATED PLANT MATERIAL.
3.

ALL PLANTS SHALL CONFORM TO THE LATEST VERSION OF THE AMERICAN STANDARD FOR NURSERY STOCK ANSI Z60.1. PLANTS SHALL BE TRUE TO SPECIES AND VARIETY SPECIFIED AND NURSERY GROWN IN ACCORDANCE WITH GOOD HORTICULTURAL PRACTICES UNDER CLIMATIC CONDITIONS SIMILAR TO THOSE IN THE LOCALITY OF THE PROJECT FOR AT LEAST 2 YEARS. PLANTS SHALL BE FRESHLY DUG (DURING THE MOST RECENT FAVORABLE HARVEST SEASON). PLANTS SHALL BE SO TRAINED IN DEVELOPMENT AND APPEARANCE AS TO BE UNQUESTIONABLY SUPERIOR IN FORM, COMPACTNESS, AND SYMMETRY. PLANTS SHALL BE SOUND, HEALTHY, VIGOROUS, WELL BRANCHED AND DENSELY FOLIATED WHEN IN LEAF, AND FREE OF DISEASE AND INSECTS (ADULT EGGS, PUPAE OR LARVAE). THEY SHALL HAVE HEALTHY, WELL-DEVELOPED ROOT SYSTEMS AND SHALL BE FREE FROM PHYSICAL DAMAGE OR OTHER CONDITIONS THAT WOULD PREVENT THRIVING GROWTH OR PREMATURE MORTALITY. PLANTS SHALL BE OF THE HIGHEST QUALITY, POSSESS TYPICAL GROWTH HABITS AND FORM FOR THEIR SPECIES AND BE FREE OF INJURY. PARKWAY TREES AND PARKING LOT TREES SHALL HAVE A MINIMUM BRANCHING HEIGHT OF SIX (6) FEET ABOVE THE GROUND TO ALLOW ADEQUATE VISUAL AND PHYSICAL CLEARANCE.
4.

ALL PLANTS OF THE SAME SPECIES SHALL BE OBTAINED FROM THE SAME NURSERY SOURCE.
5.

THE LANDSCAPE CONTRACTOR SHALL STAKE THE LOCATION OF ALL TREES AND OTHER LANDSCAPE FEATURES FOR APPROVAL BY THE LANDSCAPE ARCHITECT AND SHALL CHECK FOR CORRECT SPACING BEFORE PLANTING.
6.

THE CONTRACTOR SHALL GIVE AT LEAST 48 HOURS NOTICE TO THE LANDSCAPE ARCHITECT AS EACH PHASE OF WORK IS UNDERTAKEN PRIOR TO PLANTING OPERATIONS SO THAT THE LANDSCAPE ARCHITECT CAN BE PRESENT TO VERIFY PLANTS IMMEDIATELY PRIOR TO PLANTING. IF NOTICE IS NOT GIVEN BY THE CONTRACTOR, HE SHALL REMOVE/REPLACE PLANTS AS DIRECTED BY THE LANDSCAPE ARCHITECT AT NO ADDITIONAL EXPENSE TO THE OWNER.
7.

PLANT TREES AND SHRUBS AFTER THE FINAL GRADES HAVE BEEN ESTABLISHED AND PRIOR TO THE PLANTING OF LAWNS UNLESS OTHERWISE ACCEPTABLE TO THE OWNER. IF PLANTING OF TREES OCCURS AFTER LAWN WORK, THE LANDSCAPE CONTRACTOR SHALL PROTECT LAWN AREAS AND PROMPTLY REPAIR DAMAGED LAWN RESULTING FROM PLANTING OPERATIONS.
8.

ALL PLANT MATERIAL SHALL BEAR THE SAME RELATIONSHIP TO THE NEW GRADE AS IT BORE TO THE GRADE AT THE NURSERY.
9.

PRUNE BROKEN OR CROSS BRANCHING AT THE TIME OF PLANTING. DO NOT REMOVE LEADER.
10.

FOR TREES PLANTED IN TURF AREAS, THE LANDSCAPE CONTRACTOR SHALL PROVIDE A 6'-Ø" DIA. SHREDDED HARDWOOD BARK MULCH RING (REMOVE EXISTING TURF) AT A MINIMUM OF 3" THICK (AFTER SETTLEMENT) WITH A CULTIVATED EDGE AT THE BASE OF EACH TREE. MULCH SHALL BE PLACED WITHIN TWO (2) DAYS AFTER TREES ARE PLANTED. THIS SHALL BE CONSIDERED INCIDENTAL TO TREE PLANTINGS. INCLUDE TERRA-SORB HYDROGEL CRYSTALS WITH PLANTING MIX.
11.

TREES SHALL BE SET IN TRUE, VERTICAL ALIGNMENT AFTER PLANTING.
12.

ALL PLANTS SHALL BE PLANTED PER THE LANDSCAPE PLAN AND SPECIFICATIONS. PLANTINGS NOT FOUND TO BE IN COMPLIANCE SHALL BE REPLANTED CORRECTLY AT NO ADDITIONAL EXPENSE TO THE OWNER.
13.

ADJUST SHRUB, PERENNIAL, AND GROUNDCOVER SPACING AS NECESSARY TO EVENLY FILL PLANTING BEDS.
14.

THE LANDSCAPE ARCHITECT OR OWNER RESERVES THE RIGHT TO REJECT PLANTS ON SITE WHETHER STOCK PILED OR PLANTED IN PLACE. REJECTED PLANTS SHALL BE REMOVED IMMEDIATELY FROM SITE.
15.

IN CASE OF DISCREPANCIES BETWEEN THE PLAN AND THE PLANT LIST, THE PLAN SHALL DICTATE.

16.

WHERE PLANTING BEDS MEET TURF AREAS, THE CONTRACTOR SHALL PROVIDE A CULTIVATED EDGE. MULCH ALL SHRUB BEDS TO THE LINE SHOWN. THE CONTRACTOR SHALL FURNISH AND INSTALL 3" LAYER OF SHREDDED HARDWOOD MULCH UNDER ALL TREE PLANTINGS AND SHRUB BEDS. (SUBMIT SAMPLE, SEE SPECS.)
17.

AN APPROVED ORGANIC PRE-EMERGENT HERBICIDE SHALL BE APPLIED IN ALL PLANTING BEDS AT A RATE SPECIFIED BY MANUFACTURER FOR EACH PLANT VARIETY.
18.

STORE ALL PLANTS ON SITE OUT OF DIRECT WINDS IN AN AREA DESIGNATED BY THE OWNER'S AGENT.THE LANDSCAPE CONTRACTOR SHALL TAKE NECESSARY PRECAUTIONS TO PREVENT INJURY TO ALL PLANT MATERIAL DURING DIGGING, HANDLING, PLANTING, AND MAINTENANCE OPERATIONS.
19.

ALL PLANTS SHALL BE GROUPED TOGETHER BY SPECIES AND SIZE AND SHALL BE COVERED WITH MULCH OR COMPOST TO PREVENT DESICCATION.
20.

FOR ALL GROUNDCOVERS, ROTOTILL 2" OF SPHAGNUM PEAT INTO TOPSOIL TO A DEPTH OF 6" TO YIELD A HOMOGENOUS MIXTURE OF TOPSOIL AND PEAT.
21.

GROUNDCOVER AREAS SHALL ONLY RECEIVE 1 ½" SHREDDED HARDWOOD MULCH (NO FABRIC). CAREFULLY PLACE MULCH AROUND PLANT BASE.
22.

IMPORTATION OF CLEAN TOPSOIL AND FILL MATERIAL IS A MUST FOR THIS PROJECT. TOPSOIL FOR USE ON THE SITE MUST COME FROM AN APPROVED SOURCE.
23.

FINE GRADE, FERTILIZE, AND SEED ALL DISTURBED AREAS WITHIN THE CONSTRUCTION LIMITS AS SHOWN. ALL TURF AREAS SHALL DRAIN COMPLETELY AND SHALL NOT POND NOR PUDDLE. ALL TURF AREAS SHALL RECEIVE 6" THICK BLACK TOPSOIL-ALLOW FOR SETTLEMENT.
24.

DURING LANDSCAPE WORK, KEEP PAVEMENTS CLEAN AND WORK AREAS IN AN ORDERLY MANNER. REMOVE ALL DEBRIS FROM THE JOB SITE ON A DAILY BASIS.
25.

ALL PLANT MATERIAL SHALL BE FULLY GUARANTEED FOR ONE YEAR FROM THE DATE OF ACCEPTANCE. DEAD OR UNHEALTHY PLANTS SHALL BE REPLACED AS SOON AS CONDITIONS PERMIT.
26.

SUBSTITUTION OF PLANT MATERIAL DUE TO LACK OF AVAILABILITY MUST BE APPROVED BY THE LANDSCAPE ARCHITECT. SUBSTITUTE PLANTS SHALL BE THE SAME SIZE, OR LARGER, AND OF EQUAL OR BETTER VALUE THAN THE ITEMS SPECIFIED. THE "EQUALITY" WILL REST WITHIN THE SOLE JUDGMENT OF THE LANDSCAPE ARCHITECT.
27.

THE LANDSCAPE CONTRACTOR SHALL COMPLY WITH THE FOLLOWING INSTALLATION AND MAINTENANCE PROCEDURES.

•

NEW TREES AND SHRUBS SHALL BE WATERED AND MAINTAINED UNTIL FIRMLY ESTABLISHED.

•

NEW TREES AND SHRUBS SHALL BE PRUNED TO REMOVE ALL DEAD AND DAMAGED WOODS.

•

MULCHED PLANTING BEDS SHALL BE MAINTAINED AT A DEPTH OF 3".
32.

ALL PLANTING BEDS AND TREE PITS SHALL BE WEEDED REGULARLY.

CUMULATIVE PLANT SCHEDULE

Code	Quantity	Size	Scientific Name	Common Name
Deciduous Trees				
ACSA	2	2.5" bb	Acer saccharum	Sugar Maple
CEOC	2	2.5" bb	Celtis occidentalis	Hackberry
GLTR	2	4" BB	Gleditsia triacanthos var. inermis	Thornless Honeylocust
ULFR	2	2.5" bb	Ulmus x. 'Frontier'	Frontier Elm
Deciduous/Evergreen Shrubs				
SPJA	6	#05 (gal)	Spiraea japonica 'Walbura'	Magic Carpet Spirea
TATA	4	24" bb	Taxus x media 'Taunton'	Taunton Yew
Perennials/Ornamental Grasses				
SPHE	10	#01 (gal)	Sporobolus heterolepis	Prairie Dropseed



CIVIL CONSULTANT:  
(P) 630/4637172

reSmith  
135 E. EMB. ROAD, SUITE 102  
MORRIS, ILLINOIS 60462-0001

STRUCTURAL CONSULTANT:  
(P) 630/3410540  
(P) 630/3510664

Larson Engineering, Inc.  
1000 N. LAUREL AVE., SUITE 100  
MORRIS, ILLINOIS 60462-0003

MEP / FF CONSULTANT:  
(P) 630/3410540  
(P) 630/3510664

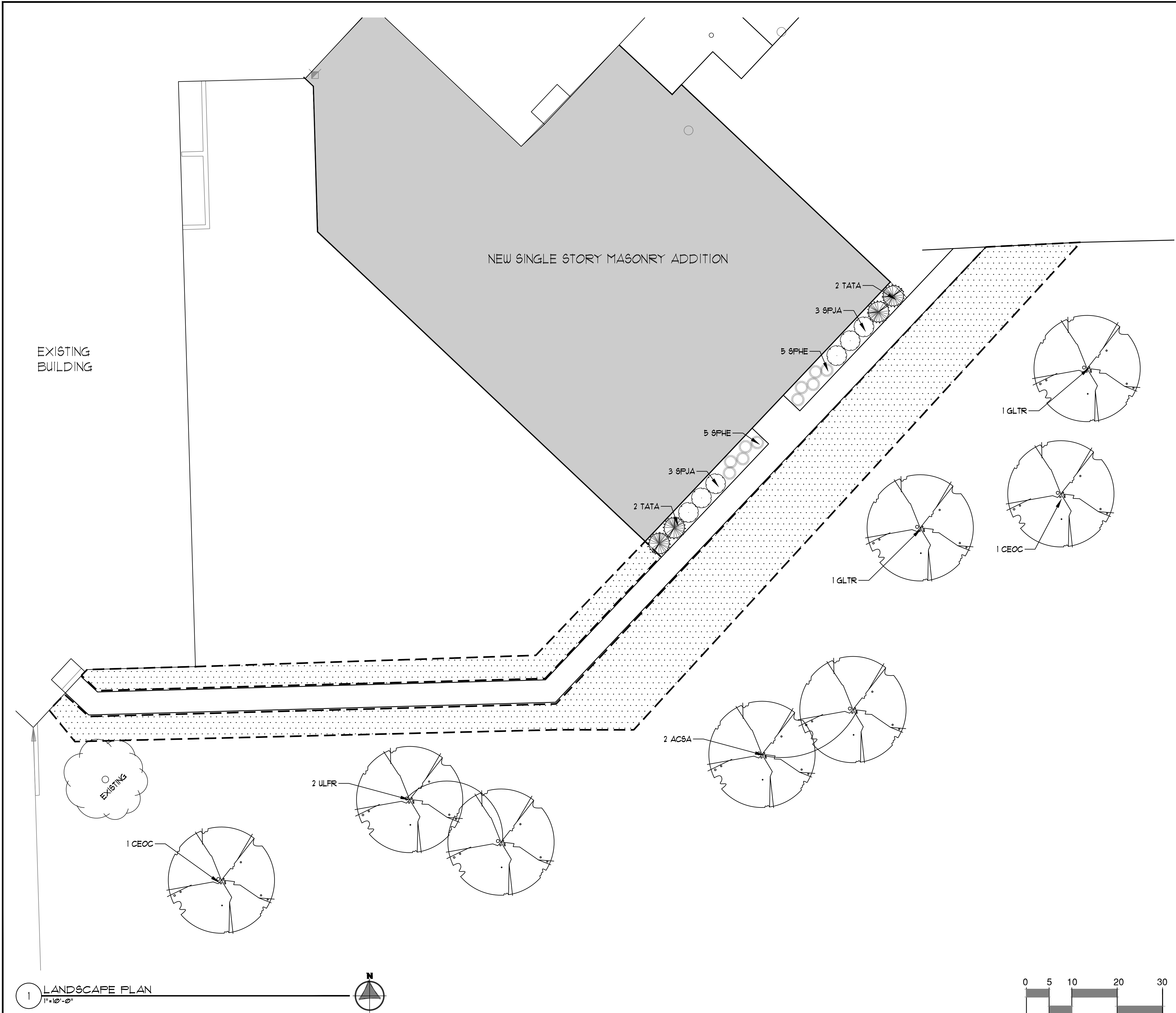
ELARA  
1000 N. LAUREL AVE., SUITE 100  
MORRIS, ILLINOIS 60462-0003

ORLAND SCHOOL DISTRICT 135  
2023 ADDITIONS AND RENOVATIONS AT:  
CENTENNIAL PRIMARY SCHOOL  
14101 CREEK CROSSING DR, ORLAND PARK, IL 60462

PROJECT NUMBER: 21-064	ISSUANCE
PROJECT MANAGER: LTY	1
DRAWN BY: LTY	1
ISSUED FOR BIDDING: 3/2/23	1
GENERAL NOTES 4 SCHEDULE	



L1.00



- LANDSCAPE PLAN NOTES:**
1. FINE GRADE AND SEED DISTURBED AREA WITH A KENTUCKY BLUEGRASS BLEND SEED. THE CONTRACTOR SHALL WATER ALL NEWLY SEEDED AREAS UNTIL SUBSTANTIAL COMPLETION AND THE SITE IS TURNED OVER TO THE OWNER.
  2. THE LANDSCAPE CONTRACTOR SHALL COORDINATE ALL FINE GRADING AND TOPSOILING WITH GENERAL CONTRACTOR
  3. REFER TO "LANDSCAPE DETAILS AND NOTES" SHEET FOR ADDITIONAL DETAILS, NOTES AND SPECIFICATION INFORMATION INCLUDING MATERIALS, GUARANTEE AND EXECUTION RELATED TO LANDSCAPE PLAN.
  4. ALL TREES AND/OR SHRUBS PLANTED IN SEEDED LAWN AREAS TO BE INSTALLED WITH A MINIMUM 4' DIAMETER SHREDDED HARDWOOD BARK MULCH TREE RING SPREAD TO A CONSISTENT DEPTH OF 3-INCHES. ALL TREE RINGS SHOULD BE INSTALLED WITH A 5" DEPTH SHOVEL CUT EDGE, ANGLED 45 DEGREES INTO SOIL AT A 5' DIAMETER ABOUT THE CENTER OF THE TREE PLANTING. A PRE-EMERGENT GRANULAR HERBICIDE WEED-PREVENTER SHOULD BE MIXED WITH MULCH USED TO INSTALL TREE RING AS WELL AS TOPICALLY APPLIED TO COMPLETED INSTALLATION OF TREE RING. .
  5. SEE ALSO SPECIFICATIONS FOR PLANTING REQUIREMENTS.
  6. FOR ALL EXISTING TREES TO REMAIN: PROTECT DURING CONSTRUCTION. FURNISH AND INSTALL SNOW FENCE. IT IS THE ESSENCE OF THE CONTRACT TO PRESERVE THE PRESENT CONDITION OF THE TREES TO REMAIN. ALL REMOVALS AND DEMOLITION OF MATERIALS BENEATH THE TREE CANOPIES TO BE PERFORMED BY MANUAL OPERATIONS (HAND). NO MACHINERY TO BE USED BENEATH THE CANOPY OF THE TREE IN ORDER TO PROTECT ROOTS FROM DAMAGE.
  7. TREE FENCING TO BE EXPANDED TO INCLUDE ENTIRE DRIP LINE ONCE DEMOLITION HAS OCCURRED. ONCE REMOVAL ITEM IS REMOVED, ADJUST PROTECTION FENCING TO EQUAL DRIP LINE. SEE ALSO CIVIL DRAWINGS.
  8. SEE ALSO TREE MITIGATION PLAN SHEET C10.

**LEGEND**

--- SEED RESTORATION LIMITS

[Stippled Box] KENTUCKY BLUEGRASS PREMIUM BLEND BY CLESENS OR APPROVED EQUAL

CIVIL CONSULTANT:  
(P) 630/4632172

STRUCTURAL CONSULTANT:  
(P) 630/3610540  
(P) 630/3510644

MEP / PE CONSULTANT:  
(P) 630/3610540  
(P) 630/3610540

reSmith  
DESIGN, BUILD, MAINTENANCE  
IN SMALL, MEDIUM, LARGE, AND VERY LARGE

Larson Engineering, Inc.  
DESIGN, BUILD, MAINTENANCE  
IN SMALL, MEDIUM, LARGE, AND VERY LARGE

ELARA  
ELARA Engineering  
DESIGN, BUILD, MAINTENANCE  
IN SMALL, MEDIUM, LARGE, AND VERY LARGE

**ORLAND SCHOOL DISTRICT 135**

**2023 ADDITIONS AND RENOVATIONS AT:**

**CENTENNIAL PRIMARY SCHOOL**

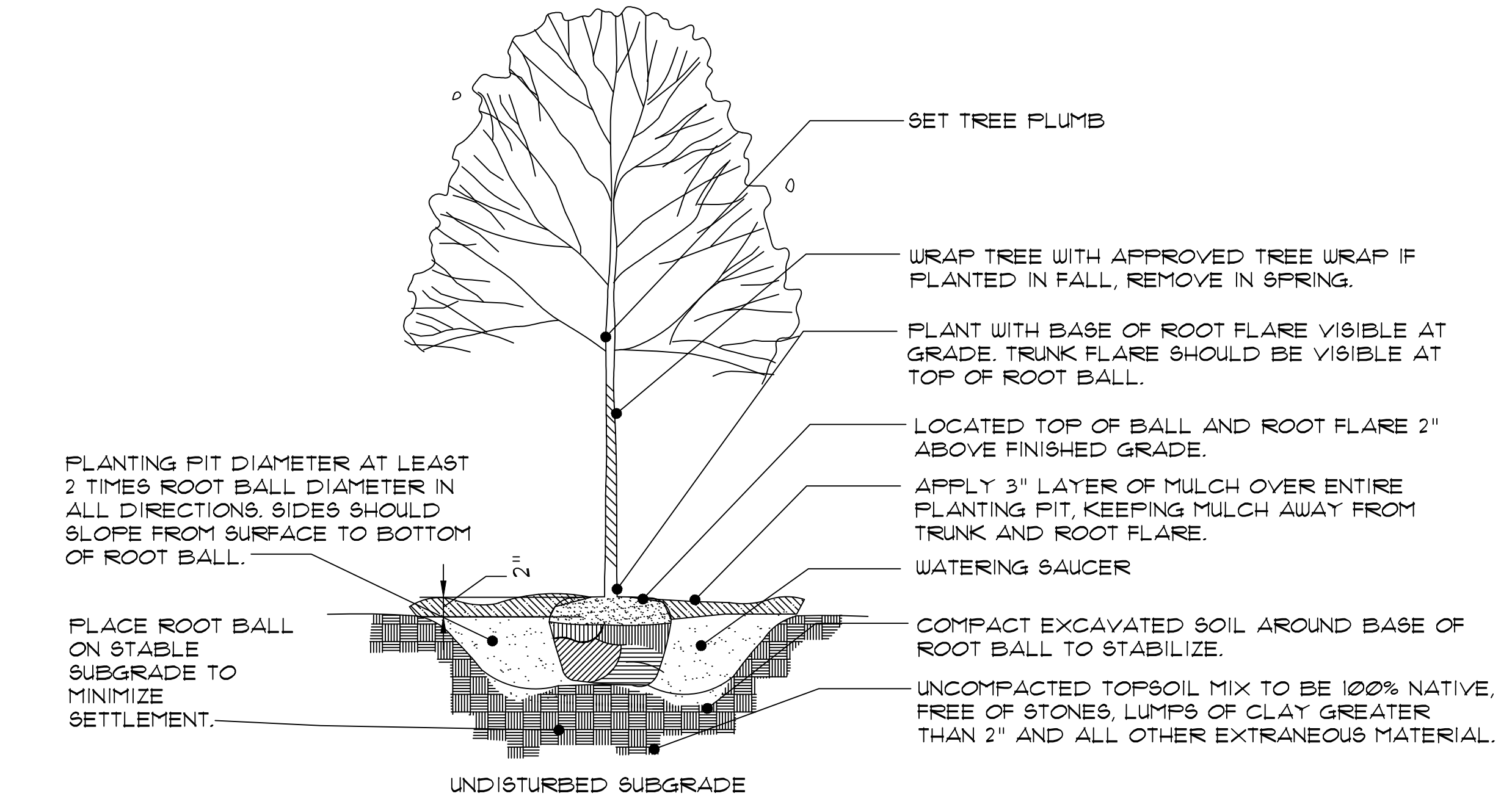
**14101 CREEK CROSSING DR, ORLAND PARK, IL 60462**

PROJECT NUMBER: 21-064	ISSUED FOR: 05/16/2023
PROJECT MANAGER: LTV	ISSUED FOR BIDDING: 07/03
DRAWN BY: LTV	LANDSCAPE PLAN

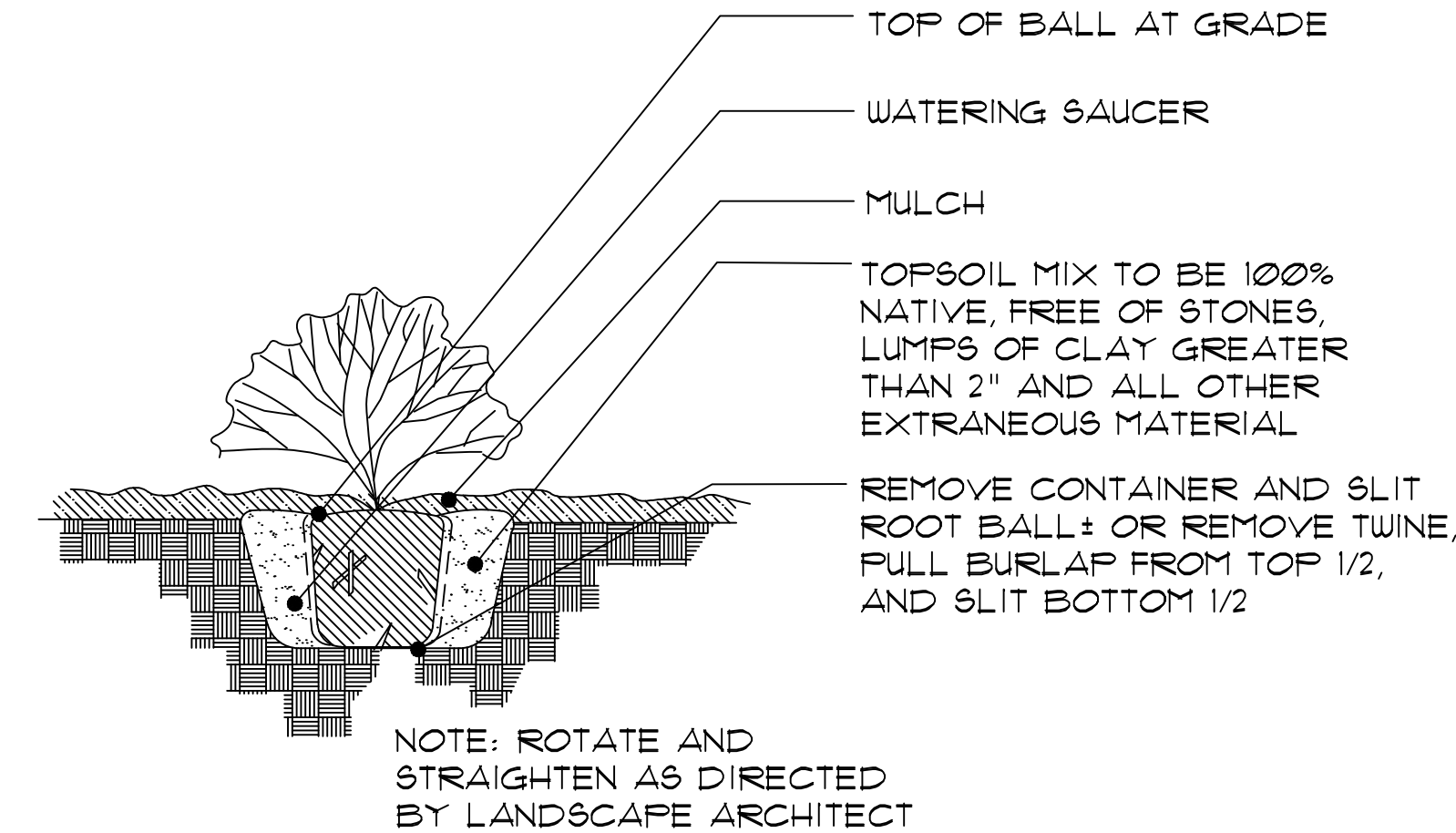
Community of Learners  
**Orland**  
School District 135

**L2.00**

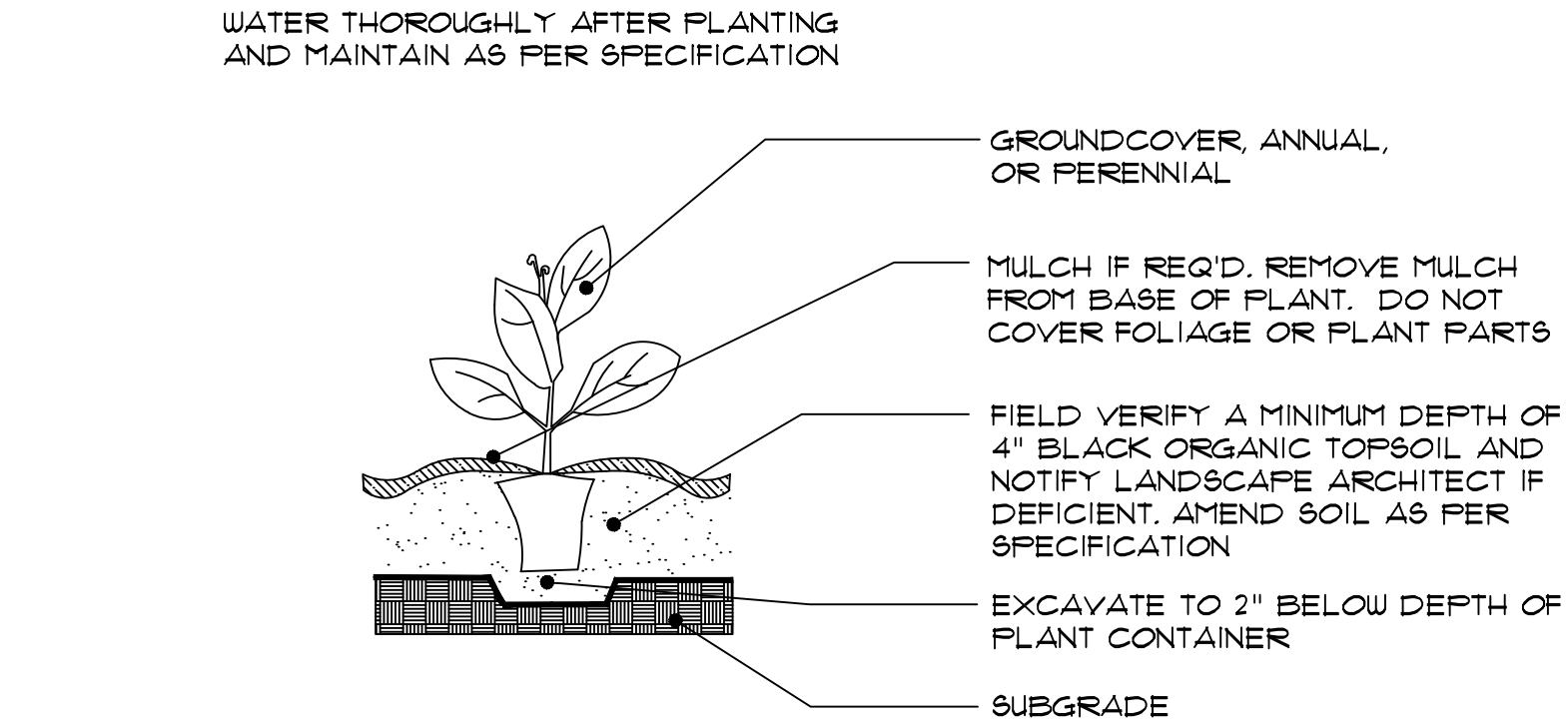
SET 1 OF 5



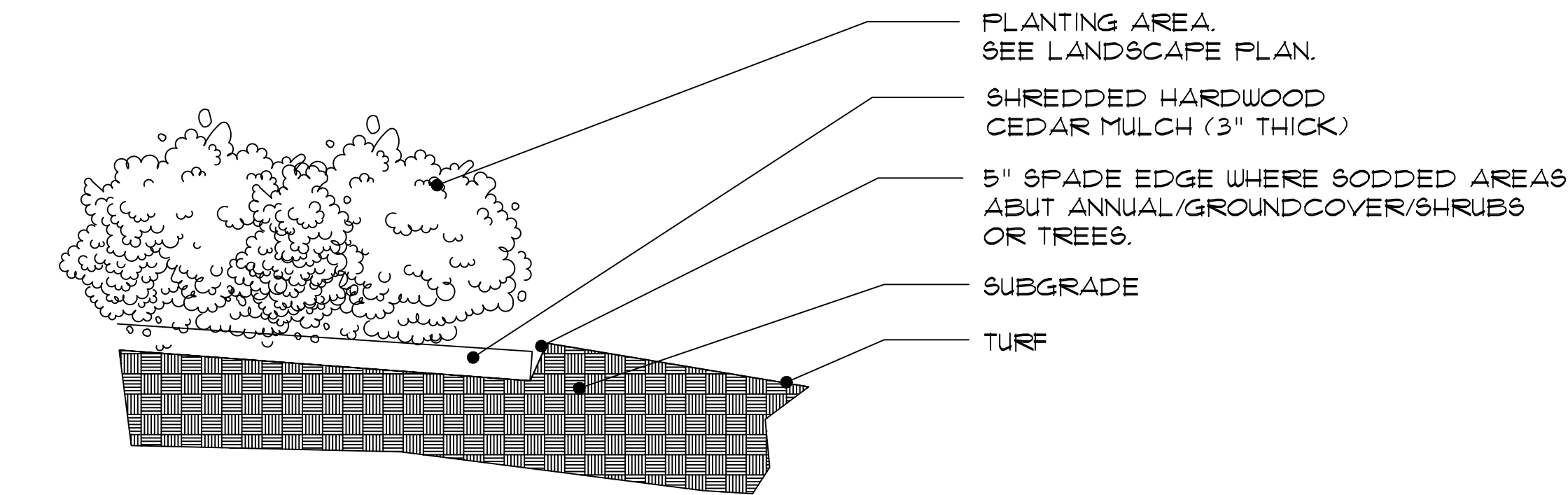
1 DECIDUOUS TREE  
NTS



2 DECIDUOUS/EVERGREEN SHRUB  
NTS



3 PERENNIAL/ORNAMENTAL GRASS  
NTS



4 NATURAL SPADE EDGE  
NTS