

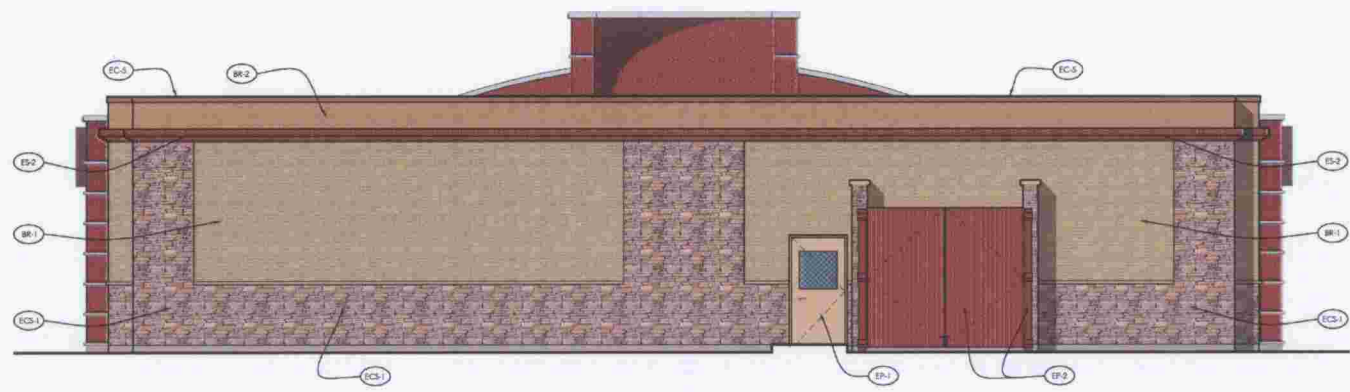


RED ROBIN GOURMET BURGERS  
 15503 COPENHAGEN ROAD  
 ORLAND PARK, IL 60462  
 EXTERIOR ELEVATIONS  
 PLANNING RE-SUBMITAL: 2/29/08

CHIPMAN ADAMS LTD.  
 Architects & Planners, Suite 400  
 Park Ridge, Illinois 60068-1483  
 P 847-298-8900 F 847-298-8944

Revisions  
 ▲ REV FOR PRELIM PLANNING &  
 ▲ ENGINEERING, 2/29/08  
 ▲  
 ▲  
 ▲  
 ▲

- 1/ PARAPET  
22'-0" A.F.F.
- 1/ PARAPET  
18'-3 1/2" A.F.F.
- 1/ PARAPET  
15'-3" A.F.F.
- 1/ CORNICE  
14'-4" A.F.F.
- 1/ PARAPET  
10'-10 1/2" A.F.F.
- 1/ WATER TABLE  
4'-0" A.F.F.
- FIN. F.L.  
ELEV. 0'-0"



**EAST ELEVATION**

- 1/ PARAPET  
22'-0" A.F.F.
- 1/ RADUS PARAPET  
18'-4" A.F.F.
- 1/ PARAPET  
18'-3 1/2" A.F.F.
- 1/ PARAPET  
15'-3" A.F.F.
- 1/ CORNICE  
14'-4" A.F.F.
- ES-2
- BR-1
- 1/ WATER TABLE  
4'-0" A.F.F.
- FIN. F.L.  
ELEV. 0'-0"



**NORTH ELEVATION**

- 1/ PARAPET  
22'-0" A.F.F.
- 1/ RADUS PARAPET  
18'-4" A.F.F.
- 1/ PARAPET  
18'-3 1/2" A.F.F.
- 1/ PARAPET  
15'-3" A.F.F.
- 1/ CORNICE  
14'-4" A.F.F.
- 1/ CORNING  
12'-4" A.F.F.
- 1/ WINDOW  
10'-2" A.F.F.
- 1/ CAP  
4'-0" A.F.F.
- FIN. F.L.  
ELEV. 0'-0"



Orland Park, IL  
 Elev: B3  
 03 / 03 / 08

CHIPMAN ADAMS  
 ARCHITECTS  
 1530 N. NORTHWEST HIGHWAY  
 SUITE 400  
 PARK RIDGE, IL 60068-1483  
 T 847-298-8900  
 F 847-298-8944



Drawn By	Checked By
Scale	Date
1/8" = 1' 0"	2/24/08
Job No.	07-4685
Sheet No.	A3.1