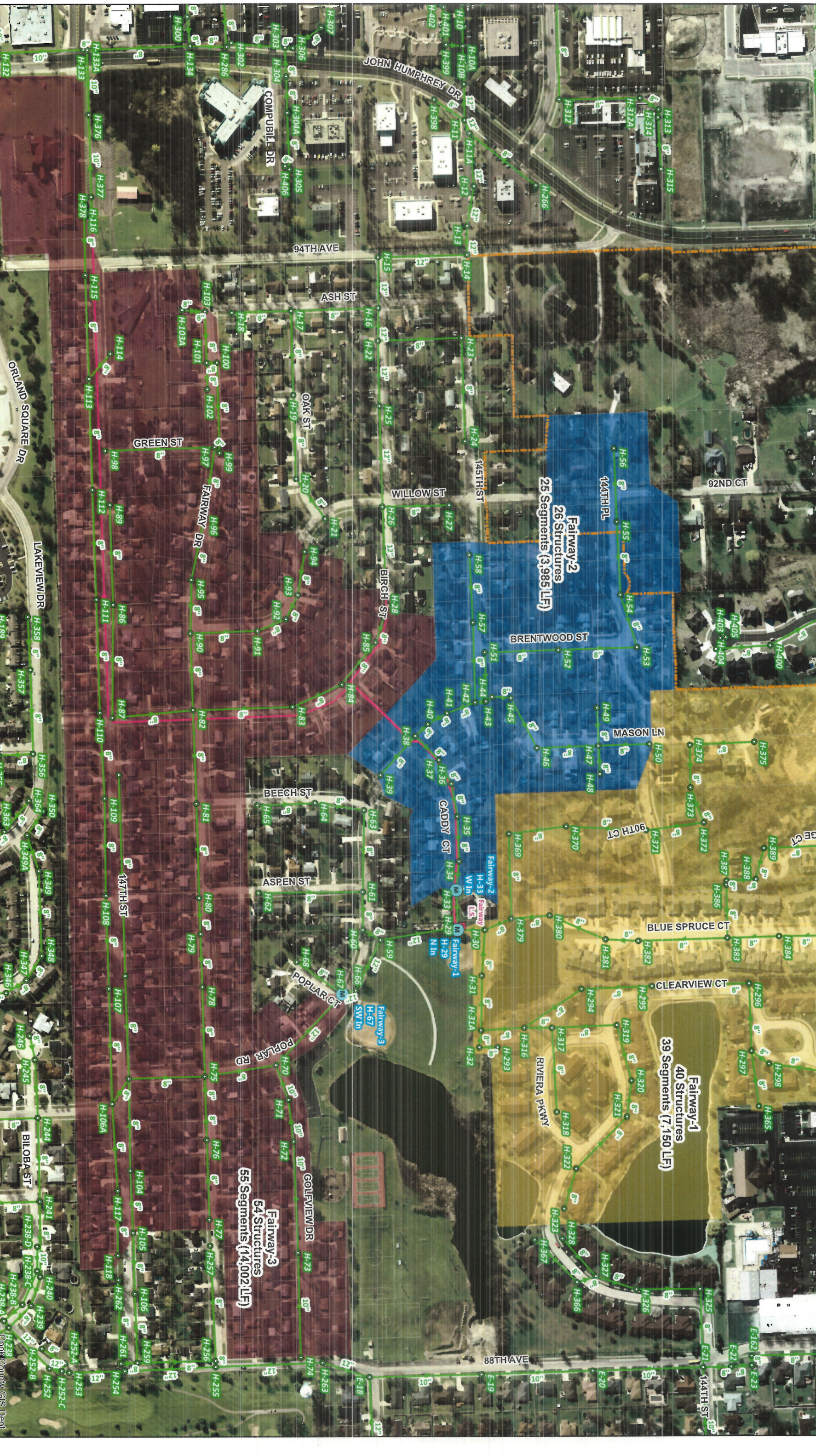


95TH AVE  
143RD ST  
144TH ST  
145TH ST  
146TH ST  
147TH ST  
148TH ST  
149TH ST  
150TH ST  
151ST ST  
152ND ST  
153RD ST  
154TH ST  
155TH ST  
156TH ST  
157TH ST  
158TH ST  
159TH ST  
160TH ST  
161ST ST  
162ND ST  
163RD ST  
164TH ST  
165TH ST  
166TH ST  
167TH ST  
168TH ST  
169TH ST  
170TH ST  
171ST ST  
172ND ST  
173RD ST  
174TH ST  
175TH ST  
176TH ST  
177TH ST  
178TH ST  
179TH ST  
180TH ST  
181ST ST  
182ND ST  
183RD ST  
184TH ST  
185TH ST  
186TH ST  
187TH ST  
188TH ST  
189TH ST  
190TH ST  
191ST ST  
192ND ST  
193RD ST  
194TH ST  
195TH ST  
196TH ST  
197TH ST  
198TH ST  
199TH ST  
200TH ST



**rjn group**  
Engineering  
2019 Proposed Meters  
Sanitary Manholes  
Lift Stations  
MWRD Manhole  
Sanitary Sewer  
Force Main  
MWRD Main  
Orland Park Boundary

0 250 500 1,000 Feet

Village of Orland Park, IL  
Proposed Meters and Basins  
Fairway 1S  
March 2019  
Cook County GIS Dept.

Scale: 1" = 100'



