



Village of Orland Park

Doogan Park Redevelopment Project

Construction Engineering Services

SEPTEMBER 5, 2024



Wight & Company
wightco.com

2500 North Frontage Road
Darien, IL 60561

P 630.969.7000
F 630.969.7979

Point of Contact
Robert S. Ijams, PLA
Principal-in-Charge | Director of Parks & Recreation

rijams@wightco.com
D 630.739.6644
M 630.536.6457



Contents

Technical Proposal

Letter of Interest

1. Experience
2. Operating History
3. Qualifications

Required Forms

4. Proposal Summary Sheet
5. Certificate of Compliance
6. References
7. Insurance Requirements

February 5, 2024



Village of Orland Park
Office of the Village Clerk
2nd Floor
14700 S. Ravinia Ave.
Orland Park, IL 60462

Wight & Company
wightco.com

2500 North Frontage Road
Darien, IL 60561

P 630.969.7000
F 630.969.7979

**RE: Request for Proposal (RFP) for Doogan Park Redevelopment Project
Construction Engineering Services**

On behalf of Wight & Company (Wight), thank you for the opportunity to submit our proposal to provide professional construction engineering services for the Village of Orland Park's Doogan Park Project.

First, Congratulations! We understand the Village of Orland Park received a \$600K OSLAD grant from the IDNR for Doogan Park! We appreciated the opportunity to work with Village staff in 2023 to help develop the initial master plan and assist with the OSLAD grant application. Based on the grant application strategy and the VOS matching funds, the total OSLAD project budget is \$1.6M while the overall project budget is \$2.45M. We understand it is the mission of the Village of Orland Park Recreation and Parks Department "...to strive to enhance the quality of life for all residents and program participants to create memorable experiences by offering progressive, enriching, recreation and leisure opportunities while preserving natural resources for present and future generations."

As a firm that has made our living over the last 85 years by working with public agencies like yours, we recognize the pressure of community expectations. Rest assured, this is what we do. Our dedicated in-house team of Parks & Recreation professionals are tremendously excited to work with you and the Village staff to provide the community with not only more outdoor active and passive recreation opportunities, but also with confidence in the process. We are here to support you with a transparent, inclusive, and creative approach that ensures the Doogan Park Project will be an asset reflective of Orland Park and its residents. Based on our understanding of the work you have done and your needs moving forward, we have assembled a talented team lead by Project Manager/Lead Designer Patty King, PLA, CPSI, ASLA, LEED AP. With over 25 years of experience, Patty has designed and managed over \$100M of Parks & Recreation projects, including +30 with OSLAD grants. Wight's in-house team of landscape architects, civil engineers, and cost estimators has successfully completed numerous park and OSLAD projects and has more than 100 years of collective experience developing spaces in which communities play, learn, compete, and connect.

We thank you for the opportunity to continue our partnership with Orland Park, and to assist you in the development of your vision for Doogan Park. Our project team looks forward to discussing our approach and thoughts on how we can help you maximize your community's investment and provide you with confidence in the value we will bring to this exciting project. If you have any questions on the submittal or require any additional information, please do not hesitate to contact me at 630.739.6644

Sincerely,

WIGHT & COMPANY

A handwritten signature in black ink that reads "Robert S. Ijams". The signature is stylized and cursive.

Robert S. Ijams, PLA
Principal-in-Charge | Director of Parks & Recreation
rijams@wightco.com
D 630.739.6644

1. Experience



Parks & Recreation Experience



WE COME TO WORK EACH DAY TO EXPERIENCE THE JOY OF HELPING OUR CLIENTS CREATE A MEANINGFUL IMPACT.

Our dedicated Parks & Recreation professionals specialize in creating exceptional indoor facilities and outdoor environments that respond to the diverse and growing needs of recreation providers. This in-house team of architects, engineers, and construction managers work side-by-side and collaboratively with our clients to bring recreation projects to life.

Whether we provide turn-key Design Led-Design Build services, construction management, or serve as a project team partner, Wight brings a collaborative approach to our work. This approach translates into creative design solutions, seamless project management and, ultimately, innovative and cost-conscious delivery. Our expertise includes the construction of indoor facilities, including swimming pools, ice rinks, gymnasiums, and sports fields, as well as outdoor spaces, such as nature centers, parks, trail systems, and play environments.

We partner with clients to create cost-effective and sustainable solutions that advance their missions. These solutions are shaped by the unique needs of each recreation provider, balanced by fiscal responsibility, and enriched by our integrated approach.



WIGHT & COMPANY'S PARKS & RECREATION SPECIALISTS ARE DEDICATED TO DESIGNING AND BUILDING UNIQUE, FUNCTIONAL SPACES FOR FAMILIES AND COMMUNITIES TO PLAY, LEARN, COMPETE, AND CONNECT.

Open Space Land Acquisition And Development Grant Program (OSLAD) - Total \$6.1M

Bloomington Township

- Hank Gianvecchio Natura Habitat Area (2024) \$150K

Bloomington Park District

- Stratford Park (2022) \$250K
- Leslie Park (2023) \$300K

Carol Stream Park District

- Walter Park (2023) \$400K

Darien Park District

- Community Park (2022) \$400K
- Garden View Park (2023) \$600K

Kendall County Forest Preserve District

- Subat Nature Preserve (2023) \$600K

La Grange, Park District of

- Waiola Park (2024) \$600K

Oak Brook Park District

- Autumn Oaks Park (2021) \$400K

Orland Park, Village of

- Doogan Park (2024) \$600K

Shorewood, Village of

- River's Edge Park Phase 1 (2023) \$600K
- River's Edge Park Phase 2 (2024) \$600K

South Elgin Parks & Recreation

- Sperry Park (2023) \$600K

Land and Water Conservation Fund Program (LWCF) - Total \$99.2K

South Elgin Parks & Recreation

- Wolf Property Acquisition (2019) \$99.2K

Park and Recreational Facilities Construction Grant Program (PARC) - Total \$5.3M

Glencoe Park District

- Weinberg Family Recreation Center Renovation (2021) \$2.5M

Northbrook Park District

- Leisure Center Renovation (2024) \$2.8M

Public Museum Grant Program - Total \$750K

Dundee Township Park District

- Randall Oaks Zoo Small Animal Building (2022) \$750K





LOCATION

Orland Park, IL

SERVICES

Landscape Architecture
 Civil Engineering
 Electrical Engineering
 Cost Estimating
 Grant Writing (OSLAD)

PROJECT DATA

Size: 17 acres
 Budget: \$2.4M
 Complete: September 2023

CONTACT

Ray Piattoni, Director
 Village of Orland Park
 14600 S Ravinia Avenue
 Orland Park, IL 60462
 708.402.6283
 rpiattoni@orlandpark.org



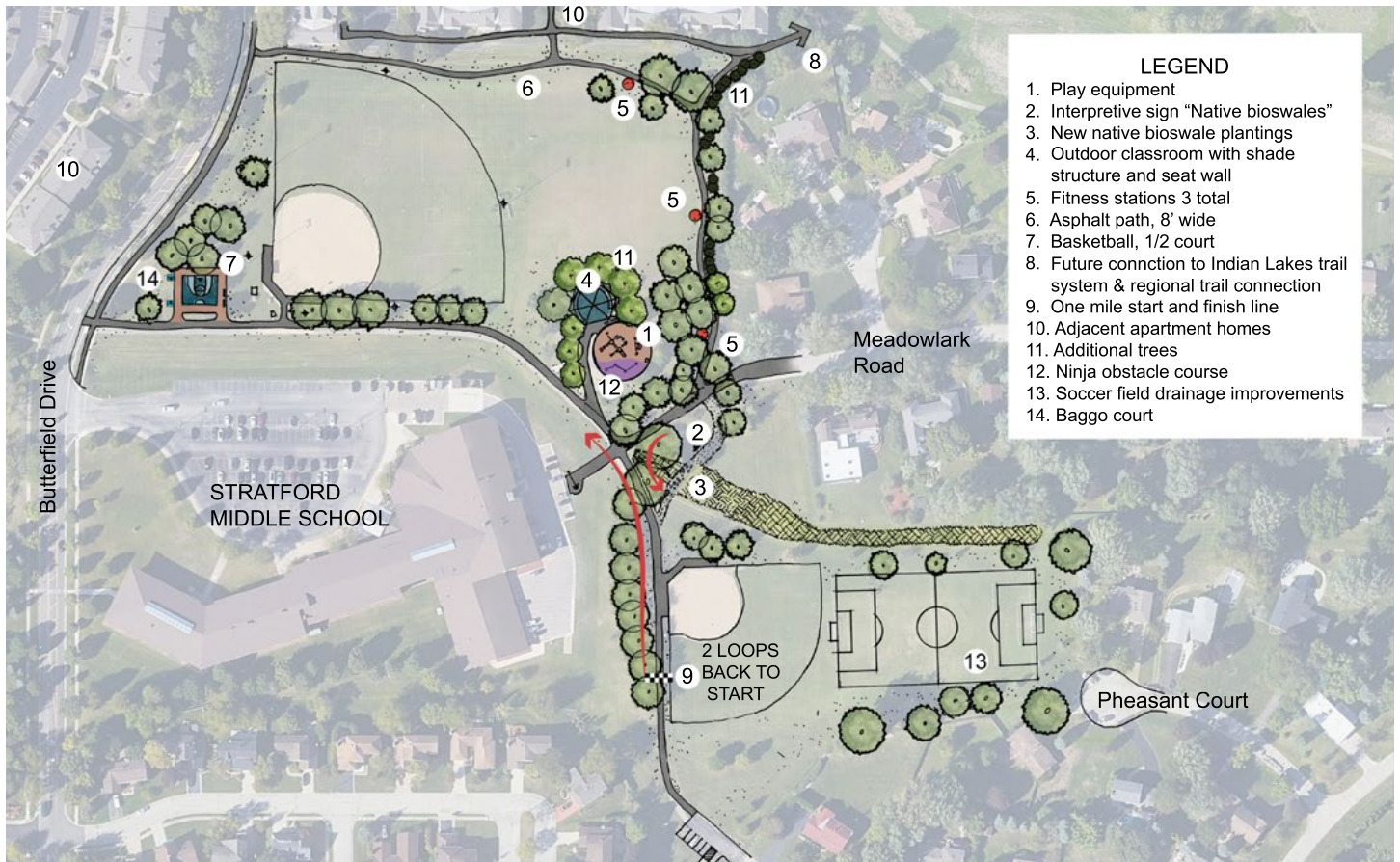
Doogan Park

Village of Orland Park

The Village of Orland Park engaged Wight & Company to develop conceptual plans for the renovation of Doogan Park based on the overall age and conditional of the existing amenities. As a part of the master plan process, Wight completed a thorough site analysis and facilitated community input meetings to build consensus on the park program. Wight then collaborated with Village staff to develop the park master plan and subsequently developed a grant strategy to successfully secure a \$600K OSLAD Grant from the IDNR to help offset the project costs. The proposed improvements included the following amenities:

Multipurpose Synthetic Turf Fields

- Asphalt loop trail
- Pickleball courts (10)
- 30'X40' shelter with restroom
- 360'X210' soccer field
- 60' Baseline baseball field
- Half basketball court
- 2 Bocceball courts
- Plaza/gathering area
- Playground w/ 20' x 20 shelter
- Sled hill
- Parking lot improvements
- Existing tennis courts
- Existing shelter



LOCATION

Bloomington, IL

SERVICES

Landscape Architecture
Civil Engineering
Grant Writing (OSLAD)

PROJECT DATA

Size: 15.6 acres
Budget: \$500,000
Compete: September 2021

CONTACT

Joe Potts
Executive Director
172 South Circle Avenue
Bloomington, IL 60108
630.529.3650
joe@bloomingtonparks.org

Stratford Park

Bloomington Park District

The Bloomington Park District engaged Wight & Company to develop a new park master plan to renovate the existing 16-acre Stratford Park located on Butterfield Drive adjacent to Stratford Middle School. This park was purchased in 1986 and originally developed in the mid-1990's. The Park District identified Stratford Park as a high priority for redevelopment based on the condition and age of the existing amenities. As a part of the master plan process, Wight facilitated community input meetings to build consensus on the park program and subsequently developed a grant strategy to successfully secure an OSLAD Grant to offset the project costs. The proposed improvements included the following amenities:

- Play Environment
- Interpretive Signage
- Outdoor Classroom
- Shade Structure
- Fitness Stations
- Basketball Court
- Trails
- Ninja Obstacle Course
- Soccer Field
- Baggo Court





LOCATION

Carol Stream, IL

SERVICES

Landscape Architecture
Grant Preparation (OSLAD) (CDBG)

PROJECT DATA

Size: 17 acres
Budget: \$2M
Complete: September 2021

CONTACT

Sue Rini
Executive Director
Carol Stream Park District
630.784.6100
SueR@csparks.org

Community Park

Carol Stream Park District

The Carol Stream Park District completed their District-wide Park Analysis Plan in 2020, which provided a prioritized road map for capital improvements for the Park District. Based on the highest priority initiative identified in the plan, the Park District acquired the 17-acre Community Park from the Village of Carol Stream and engaged Wight to re-master plan the site. Based on input from the community, Wight collaborated with Park District staff to develop a new park vision that directly responded to the unique demographics for the southeast planning area of Carol Stream. The proposed improvements included soccer fields, basketball courts, tennis courts, volleyball court, play environments, shelters, trails, parking and interpretive signage. Following the approval of the Community Park Master Plan, Wight assisted the Park District in the preparation of an OSLAD Grant and CDBG grant.





LOCATION

Darien, IL

SERVICES

Landscape Architecture
Civil Engineering
Grant Writing (OSLAD)

PROJECT DATA

Size: 19.6 acres
Budget: \$1.1M
Complete: September 2021

CONTACT

Stephanie Gurgone
Executive Director
Darien Park District
7301 Fairview Avenue
Darien, IL 60561
630.968.6400 x120
sgurgone@darienparks.com

Community Park

Darien Park District

The Darien Park District identified the 20-acre Community Park as a potential OSLAD grant candidate based on the age of the existing amenities and growing popularity of pickleball. Based on staff and community input, Wight assisted with the development of a new park master plan for the central core of Community Park. The new improvements include a permeable paver parking lot, two tennis courts, two basketball courts, four pickleball courts, volleyball with synthetic turf, picnic shelter and baggo. Following the master plan process, Wight prepared an OSLAD Grant for the Park District and successfully secured \$400k from the IDNR.





LOCATION

South Elgin, IL

SERVICES

Landscape Architecture
Civil Engineering
Grant Writing (OSLAD)

PROJECT DATA

Size: 8.37 acres
Budget: \$1.2M
Complete: September 2024

CONTACT

Kim Wascher
Executive Director
South Elgin Parks & Recreation
Department
10 N. Water Street
South Elgin, IL 60177
847.622.0003
kwascher@southelgin.com

Sperry Park

South Elgin Parks & Recreation Department

The existing park improvements at Sperry Park were originally installed in 1992 and have reached their useful life. Based on the South Elgin Park Analysis Plan, Sperry Park was identified as a high priority for redevelopment and candidate for an OSLAD grant. The South Elgin Parks & Recreation Department engaged Wight to evaluate the existing park conditions, gather community input, prepare a new park master plan, and finally secure an IDNR's OSLAD Grant for \$600K matching funds in 2022. Wight also assisted with a CDBG grant through Kane County. Based on the master plan process, the proposed improvements for Sperry Park included:

- Play Environments
- Shelter
- Pickleball Courts
- Tennis Court
- Renovated Football Field
- Trails
- Parking
- Native Landscape





LOCATION

Naperville, IL

SERVICES

Landscape Architecture
Civil Engineering
Electrical Engineering
Cost Estimating

PROJECT DATA

Size: 4.51 acres
Construction Value: \$1.71M
Compete: 2020

CONTACT

Brad Wilson
Director
Naperville Park District
320 W Jackson Avenue
Naperville, IL 60540
630.848.5000
bwilson@napervilleparks.org

Knoch Park

Naperville Park District

In order to address the aging infrastructure and growing recreational programs, the Naperville Park District engaged Wight & Company to provide engineering, landscape architecture and cost estimating services for the renovation of Knoch Park. Located near downtown Naperville, Knoch Park is utilized for local park district programs and school district sports. The renovations included the following improvements:

- Multipurpose Synthetic Turf Field
- Sports Lighting
- Stormwater Detention (below field)
- Pickleball Courts
- Bleacher Seating and Press Box
- Shade Structure
- Scoreboard
- Natural grass field
- Native Landscape
- Trails





LOCATION

Orland Park, IL

SERVICES

Landscape Architecture
 Civil Engineering
 Electrical Engineering
 Cost Estimating
 Grant Writing (OSLAD)

PROJECT DATA

Size: 20 acres
 Budget: \$8M
 Compete: June 2024

CONTACT

Ray Piattoni
 Director
 Village of Orland Park
 14600 S Ravinia Avenue
 Orland Park, IL 60462
 708.402.6283
 rpiattoni@orlandpark.org



Schussler Park

Village of Orland Park

The Village of Orland Park engaged Wight & Company to develop conceptual plans for the renovation of Schussler Park based on the overall age and conditional of the existing amenities. Following a thorough site investigation and community engagement process, Wight developed a conceptual master plan to help guide future improvements at the park. Wight worked with the Village to prepare construction documents for the two synthetic turf fields with lighting, bleacher seating, parking and stormwater management, completed in the summer of 2024. The overall master plan includes the following improvements:

Multipurpose Synthetic Turf Fields

- Stormwater Detention
- Baseball Field
- Playground
- Sports Lighting
- Shelter
- Restrooms/Concessions
- Bleacher Seating with Press Box
- Sled Hill
- Native Landscape
- Trails

2. Operating History





Firm History

EXCEPTIONALLY DESIGNED AND BUILT SPACES ENHANCE PEOPLE’S LIVES, WHETHER THOSE SPACES ARE WHERE THEY LIVE, LEARN, WORK, OR PLAY.

Wight & Company (Wight) is one of the country’s top-ranked firms offering architecture, interior design, engineering, and construction services to public and private sector clients. With diverse market strengths, our expertise spans municipal, county, federal, education, corporate, and commercial sectors.

Across our multi-discipline firm and integrated approach, we bring together experts in order to leverage the industry’s best resources and knowledge for our clients.

Our responsibility to our communities is to do more than reflect where they are today - it’s to illuminate the potential of who they can be in the future. In collaboration with our clients and partners, we create meaningful impact with human centered design that is sensitive to the needs of those it serves and sustainable for the environment surrounding it.



3 LOCATIONS

HQ: 2500 N. Frontage Road, Darien, IL
 211 N. Clinton St., Ste 300N, Chicago, IL
 8181 Arista Pl., Ste 100, Broomfield, CO



OWNERSHIP

In business since 1939, Wight & Company is a Corporation owned 100% by 3rd generation family leadership of Chairman, Mark Wight



200+ PROFESSIONALS

- 79 Architecture
- 16 Engineering
- 29 Construction
- 12 Land Development
- 21 Transportation
- 37 Corporate



250+ INDUSTRY AWARDS

An Integrated Firm

More than 25 years ago, our third-generation family-owned firm realized that there was a better way to design and deliver projects for our clients...a way to dramatically improve their experience. To accomplish this, we created an environment where the top professional in architecture, engineering, and construction could work shoulder-to-shoulder as one team with clients.



ARCHITECTURE

Our architectural expertise, offers invaluable guidance and tailored solutions to ensure that your project aligns with your objectives, meets budget constraints, and adheres to safety standards. With our team's support, you can have confidence in your project's success, making the entire architectural process both efficient and ultimately beneficial for you, the client.



ENGINEERING

Our cutting-edge Engineering Service, revolutionize your projects and enhance overall efficiency. Our team of experienced engineers is dedicated to optimizing your project's design, performance, and cost-effectiveness. Wight's Engineering Group includes mechanical, electrical, plumbing, structural, civil, transportation and environmental professionals.



CONSTRUCTION

Wight's award winning Construction Group evolved in response to our client's needs for more effective control and representation during the construction phase of projects. Wight provides comprehensive construction services through project closeout. During construction, the people, systems, and processes we offer are unmatched in sophistication and reliability.



CUSTOMIZED SERVICES TO MEET YOUR PROJECT GOALS

ARCHITECTURE

- Landscape Architecture
- Building Design
- Interior Design
- FF&E Design / Procurement
- Health / Life Safety
- Visualization / 3-D Modeling

ENGINEERING

- Transportation & Infrastructure
- Environmental Assessment
- Structural Engineering
- MEP / FP Engineering
- Site / Civil Engineering
- Stormwater Management

CONSTRUCTION

- Pre-Construction Services
- Construction Management
- Design Led-Design Build
- Integrated Delivery
- Scheduling & Cost Estimating
- Value Analysis

SUSTAINABILITY

- Sustainable Design Guidelines
- Sustainability Plans
- LEED / WELL / Passive House
- Sustainable Construction
- Energy Consulting / Modeling
- Materials Research
- Operational Expense Forecasting & Incentives

PLANNING

- Facility Assessment
- Space Needs / Space Programming
- Project Feasibility Analysis
- Long-Range Master Planning
- Existing Building Documentation
- Risk Assessment & Planning

PUBLIC ENGAGEMENT & REFERENDUM SUPPORT

- Voter Analytics
- Public Opinion Research
- Community Task Force Facilitation
- Pre-Referendum Training
- Campaign Management



54 Synthetic Turf Projects Totaling 4.3+ Million Square Feet

Wight & Company has unparalleled experience in the design and construction of synthetic turf fields in the Chicago area.

Morton West High School

Synthetic Turf Experience

High Schools

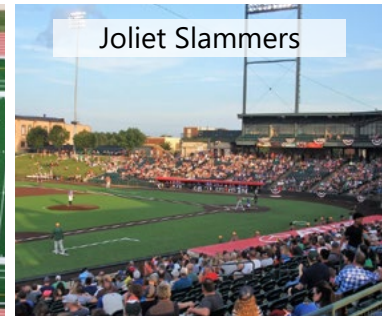
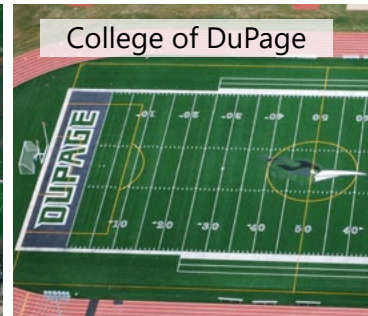
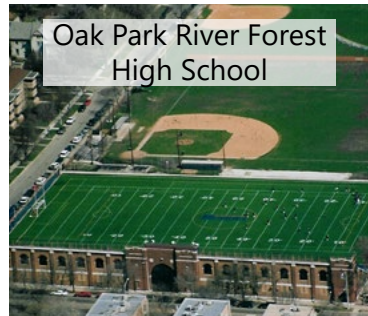
- Addison Trail High School
- Batavia High School
- Bolingbrook High School
- De La Salle Institute
- Downers Grove North High School (Multiple Fields)
- Downers Grove South High School (Multiple Fields)
- Fenwick High School
- Immaculate Conception Catholic Prep High School
- Joliet Central High School
- Joliet West High School
- Lemont High School
- Marmion Academy (Summer 2023)
- Morton West High School
- Mother McCauley High School
- Naperville Central High School
- Naperville North High School
- Nazareth Academy High School
- Oak Park River Forest High School (Multiple Fields)
- Richard T Crane Medical Prep High School
- Riverside Brookfield High School
- Romeoville High School (Multiple Fields)
- Steinmetz College Prep High School
- Uno Soccer Academy High School
- William H Wells High School
- Willowbrook High School
- York High School (Multiple Fields)

Additional Clients

- College of DuPage
- Illinois Institute of Technology
- Lewis University
- Triton College (Multiple Fields)
- Ackerman Park
- Graf Park
- Knoch Park
- Ogden Park
- Lawler Park
- Nike Park
- Great Lakes Naval Station (Summer 2023)
- Joliet Slammers Baseball Stadium

Our Team's Synthetic Turf Experience

The proposed construction team has constructed each of the fields below.

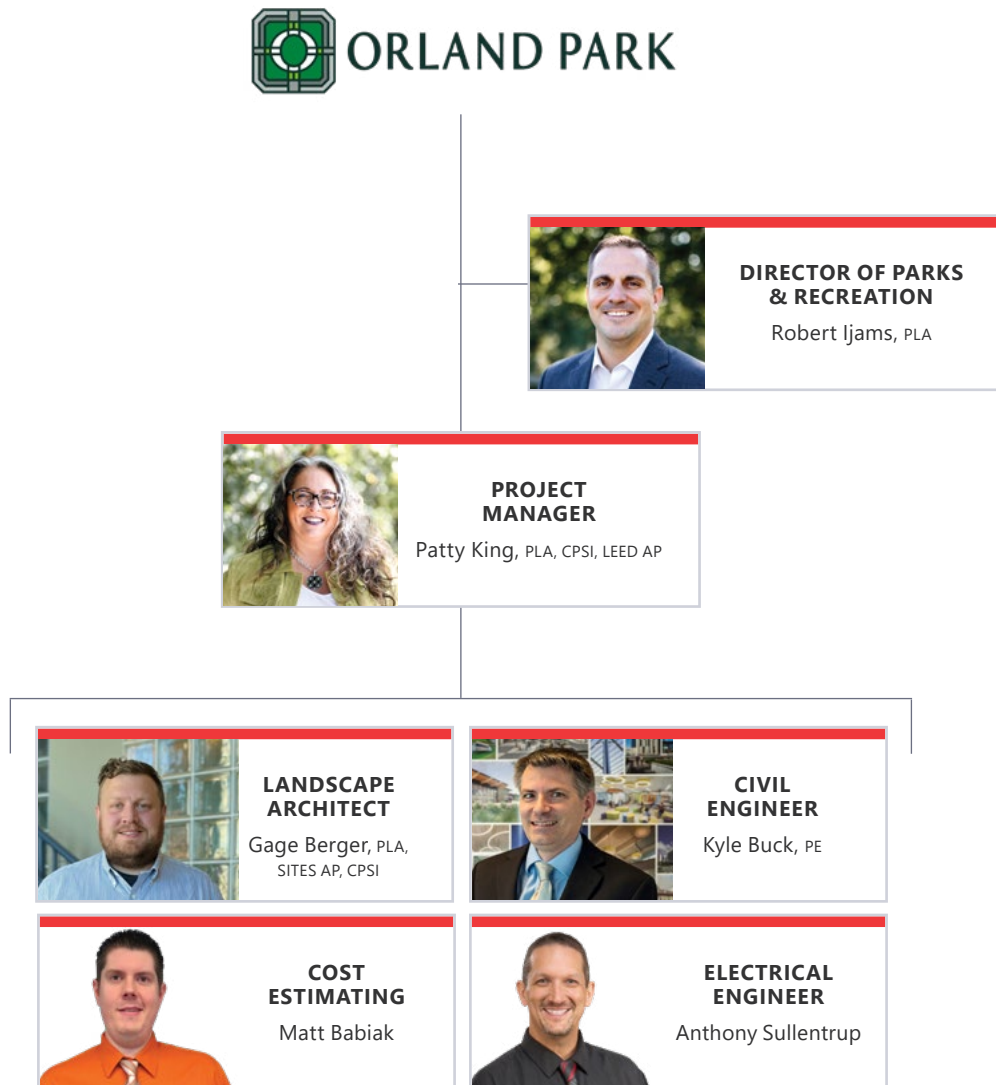


3. Qualifications



Key Personnel

Wight has assembled a highly qualified team for the Village of Orland Park Doogan Park Redevelopment Project with experience, capacity, and the ability to complete the work on time and within budget. Our proposed personnel provide a unique combination of industry-leading expertise, shared past experiences, and in-depth recreation knowledge.





Robert Ijams, PLA

Director of Parks & Recreation

Having devoted his career to creating places for children, families, and communities to compete, play, learn, and connect, Bob heads Wight's Parks & Recreation practice. He has led clients and teams through comprehensive master planning processes, as well as the design and construction of over \$75M of spaces for both active and passive recreation. From indoor facilities, athletic fields, and sports complexes to play environments, trails, and unique uses such as skate parks, Bob knows what matters to recreation providers as they develop and implement their capital improvement programs. As a collaborator who delivers inventive and cost-conscious solutions, he has helped secure over \$30M in funding for his clients.

Relevant Experience



EDUCATION

Bachelor of Landscape Architecture,
Ball State University

REGISTRATIONS

Professional Landscape Architect (PLA)
– IL

Certified Playground Safety Inspector
(CPSI)

AFFILIATIONS

Illinois Association of Park Districts

Illinois Parks and Recreation
Association

Midwest Institute of Park Executives

National Recreation and Park
Association

Oswegoland Park District
(Commissioner)

South Suburban Park and Recreation
Professional Association

Aurora, City of

- Phillips Park and Zoo

Bloomington Park District

- Leslie Park (OSLAD)
- Stratford Park (OSLAD)

Bloomington Township

- Hank Gianvecchio Natura Habitat Area (OSLAD)

Carol Stream Park District

- Appomattox Park
- Community Park (CDBG)
- Park on the Green
- Walter Park (OSLAD)

Darien Park District

- Community Park (OSLAD)
- Garden View Park (OSLAD)
- Hinsbrook Park

Edwards Reality

- Heroes Park, Downtown Orland Park

Fox Valley Park District

- Lippold Park Renovation

Frankfort Square Park District

- Champions Park

La Grange, Park District of

- Pre-referendum Concepts
- Waiola Park

Naperville Park District

- Knoch Park
- Nike Park

Normal Parks & Recreation

Department

- Ironwood Park – Tennis Renovation
- Maxwell Park Soccer Complex
- Maxwell Park Tennis Court Renovation
- Ziebarth Park

Orland Park, Village of

- Centennial Park
- Centennial Park West

- Doogan Park (OSLAD)
- John Humphrey Complex
- Schussler Park

Plainfield Park District

- Bott Park Play Environment & Splash Pad

Pleasant Dale Park District

- Sante Fe Park

Romeoville Parks & Recreation

Department

- Budler Park
- Century Park
- Forestview Park
- Malibu Bay Park
- Meadowwalk Park
- O'Hara Woods Park
- Pine Trail Park
- Rotary Park
- Ward Property
- Wesglen Park

Shorewood, Village of

- River's Edge Park Phase A (OSLAD)
- River's Edge Park Phase B (OSLAD)

South Elgin Parks & Recreation

Department

- Arbor Park
- Blackhawk Park
- Brookside Park
- Fox Meadow Park
- Gazebo Park
- Jim Hansen Park
- Lions Park (CDBG)
- Pantom Mill Park
- Ralph Tredup West Park
- Sperry Park (OSLAD)
- Thornwood Grove Park
- Wolf Property Trail (OSLAD)

Woodstock, City of

- Emricson Park
- Water Works Splashpad



Patty King, PLA, ASLA, CPSI, LEED AP

Senior Landscape Architect

Patty is a licensed landscape architect who brings creativity, vision, and structure to each of her projects. She specializes in creating outdoor spaces that provide opportunities for an intimate connection with the natural environment. Her broad range of experience includes the design of parks and recreation facilities, public safety facilities, religious facilities, and real estate developments, as well as campus planning and green roof design. She also brings a passion for applying sustainable design techniques and construction expertise to each project.

Relevant Experience



EDUCATION

Bachelor of Landscape Architecture
Biology Minor
Ball State University

REGISTRATIONS

Professional Landscape Architect (PLA)
– IL
Certified Playground Safety Inspector
(CPSI)
Leadership in Energy and
Environmental Design (LEED)
Accredited Professional (AP)

AFFILIATIONS

Illinois Park and Recreation Association
Crain's Notable Women in STEM 2023
The Morton Arboretum
Board of Trustees, The Conservation
Foundation
National Trust for Historic Preservation
– Edith Farnsworth House
Landscape Architecture Board Member
Illinois Department of Financial and
Professional Regulations (IDFPR)

Aurora, City of

- Phillips Park and Zoo

Bloomington Park District

- Springfield Park*
- Stratford Park (OSLAD)

Bloomington Township

- Hank Gianvecchio Natura Habitat Area (OSLAD)

Carol Stream Park District

- Appomattox Park
- Community Park (CDBG)
- Park Analysis Plan
- Walter Park (OSLAD)

Darien Park District

- Community Park (OSLAD)
- Driftwood Park
- Garden View Park (OSLAD)
- Meyer Woods Park

Edwards Reality

- Heroes Park

Fox Valley Park District

- Fox River Pedestrian Bridge
- Lippold Park Outdoor Education Center
- Lippold Park Renovation
- The Wilds at Red Oak - Outdoor Education Center

Frankfort Square Park District

- Champions Park

Glencoe Park District

- Glencoe Beach Renovation
- Shelton Park Greenhouse
- Weinberg Recreation Center Renovation (PARC)

Glen Ellyn Park District

- Prairie Path Park

La Grange, Park District of

- Pre-referendum concepts
- Waiola park (OSLAD)

Naperville Park District

- Knoch Park

Normal Parks & Recreation Department

- Maxwell Park Tennis Court Renovation
- Safety Town
- Ziebarth Park

Orland Park, Village of

- Centennial Park
- Centennial Park West
- Doogan Park (OSLAD)
- John Humphrey Complex
- Schussler Park

Park Ridge Park District

- Oakton Park Facility

Plainfield Park District

- Bott Park Play Environment

Pleasant Dale Park District

- Santa Fe Park

Romeoville Parks & Recreation Department

- Budler Park
- Boucher Prairie Park (OSLAD)*
- Century Park
- Deer Crossing Park (OSLAD)*
- Meadowwalk Park
- Pine Trail Park
- Rotary Park
- Wesglen Park

Shorewood, Village of

- River's Edge Park Phase A (OSLAD)
- River's Edge Park Phase B (OSLAD)

South Elgin Parks & Recreation Department

- Arbor Park
- Blackhawk Park
- Brookside Park
- Fox Meadow Park
- Lions Park (CDBG)
- Ralph Tredup Park
- Park Analysis Plan
- Ralph Tredup West Park
- Sperry Park (OSLAD)
- Thornwood Grove Park
- Wolf Property Trail (OSLAD)(LWCF)

Woodstock, City of

- Emricson Park
- Water Works Splashpad

*Experience Prior to Wight



Gage Berger, PLA, SITES AP, CPSI

Landscape Architect

Gage is a seasoned landscape architect boasting over eight years of expertise across diverse projects in commercial and residential land development, municipal branding, land planning, and specialized garden design. His professional journey includes a role as a Senior Landscape Designer at Gary R. Weber Associates, where he successfully led and coordinated projects in municipal branding, master-planned residential communities, and industrial land development. Gage’s commitment to enhancing community well-being through the preservation and restoration of open spaces and natural lands is evident in his voluntary contributions to The Conservation Foundation. Currently associated with Wight & Company, Gage continues to bring his wealth of experience and passion to create sustainable and aesthetically pleasing environments.



EDUCATION

Bachelor of Landscape Architecture,
Iowa State University

REGISTRATIONS

Professional Landscape Architect (PLA)
– IL, IN

SITES Accredited Professional
(SITES AP)

Certified Playground Safety Inspector
(CPSI)

Relevant Experience

Bolingbrook, Village of

- Pavilion

Darien Park District

- Garden View Park (OSLAD)

La Grange, Park District of

- Pre-Referendum Concepts

Lincolnway Special Recreation Association

- Sensory Garden

Normal Parks & Recreation Department

- Safety Town

Park Ridge Park District

- Oakton Park Facility

Pleasant Dale Park District

- Santa Fe Park

Skokie Park District

- Community Gardens
- Pooch Park

Shorewood, Village of

- River’s Edge Park Phase A (OSLAD)
- River’s Edge Park Phase B (OSLAD)

PK-12 EDUCATION

Glen Ellyn School District 41

- FDK Center at Churchill School

Prairie Grove Consolidated School District 46

- Phase 2B Summer 2024 Additions/Renovations



Kyle Buck, PE

Civil Engineering

Kyle has over 20 years of experience in site/civil developments and transportation engineering. He has coordinated with clients in the master planning, engineering, permitting, and construction administration of various institutional, commercial, municipal, and governmental projects. Kyle's experience in transportation includes preparation of construction documents, specifications, cost estimates, and reports. His experience also includes site/civil development zoning and code research, site layout, site grading, stormwater management and analysis, and utility relocations. Additionally, Kyle is experienced in storm sewer design, drainage ditches, inlet spacing and swales in accordance with IDOT Drainage Manual Policies and criteria. He has completed applications for floodway construction including development of compensatory storage design, and evaluation of cut and fill volumes within floodway/floodplain.

Relevant Experience

EDUCATION

Bachelor of Science, Civil Engineering,
Valparaiso University

REGISTRATIONS

Professional Engineer – IL

Bolingbrook, Village of

- Pavilion

Center for Humans & Nature – Libertyville, IL

- Facility Renovations

Darien Park District

- Maintenance Facility Demolition
- Meyer Woods Park

Downers Grove Park District

- Walnut Park Sports Complex

Dundee Township Park District

- Randall Oaks Zoo Master Plan
- Randall Oaks Zoo – Small Animal Building (Museum Grant)

DuPage County, Forest Preserve District of

- Willowbrook Wildlife Center Renovation

Fox Valley Park District

- Fox River Pedestrian Bridge
- Lippold Park Outdoor Education Center

Kane County, Forest Preserve District of

- Settler's Hill Golf Course – Site Improvements

Naperville Park District

- Knoch Knolls Nature Center

Niles Park District

- Golf View Recreation Center

Orland Park, Village of

- Centennial Park
- Centennial Park West
- John Humphrey Complex
- Schussler Park

South Elgin Parks & Recreation Department

- Lions Park (CDBG)
- Pantan Mill Park

Wheaton Park District

- Cosley Zoo – Parking Lot

Will County, Forest Preserve District of

- Four Rivers Environmental Education Center Renovation



Matthew Babiak

Cost Estimating

As an experienced project estimator, Matthew reviews construction documents, drafts trade-specific scopes of work, solicits bids from subcontractors, generates construction schedules, and communicates with owners to ensure that project scopes are being met. His detail-oriented approach to material takeoffs from plan drawings and cataloging of product information from construction specifications has proven to enhance the estimating process for both subcontractors and clients. Matthew's project experience includes renovations, full interior build-outs, and ground-up construction for a wide variety of clients, including commercial, industrial, municipal, and PK-12 school districts.

Relevant Experience



EDUCATION

Bachelor of Science, Construction Management, Western Illinois University

Aurora, City of

- Phillips Park and Zoo Master Plan

Channahon Park District

- Heritage Crossing Field House Addition

Coal City, Village of

- Coaler Community Center

Downers Grove Park District

- Facility Assessments
- Walnut Park Sports Complex

Dundee Township Park District

- Bonnie Dundee Golf Clubhouse
- Randall Oaks Zoo – Small Animal Building (Museum Grant)

DuPage County, Forest Preserve District of

- Willowbrook Wildlife Center Renovation

Fox Valley Park District

- Fox River Pedestrian Bridge
- Lippold Park Outdoor Education Center

Frankfort Square Park District

- Champions Park

Glencoe Park District

- Watt Recreation Center Renovation (PARC)

Glen Ellyn Park District

- Ackerman Sports & Fitness Center Renovation
- Prairie Path Park

Hampshire Township Park District

- Recreation Center

Joliet Park District

- Inwood Ice Arena Renovation

Kendall County Forest Preserve District

- Subat Nature Preserve (OSLAD)

Lake County Forest Preserves

- Lakewood Forest Preserve – Maintenance Facility
- Ryerson Conservation Area – Environmental Education Facility

Lincolnway Special Recreation Association

- Recreation Center Expansion

Naperville Park District

- Knoch Park

Northbrook Park District

- Techny Prairie Activity Center

Orland Park, Village of

- Centennial Park
- Centennial Park West
- John Humphrey Complex
- Schussler Park (OSLAD)

Park Ridge Park District

- Oakton Park Facility

Plainfield Park District

- Prairie Activity & Recreation Center

Skokie Park District

- Skatium Renovation

South Elgin Parks & Recreation Department

- Lions Park Building Renovation (PARC)
- Pantan Mill Park

Will County, Forest Preserve District of

- Four Rivers Environmental Education Center Renovation



Anthony Sullentrup

Electrical Engineering

Anthony has 27 years of experience in electrical building systems design and project/construction management. He is responsible for client meetings, and managing and delivering information to mechanical, electrical, and plumbing engineers. He has experience in the design of lighting controls, lighting, power, fire alarm, security, voice, data, and other building systems.

Relevant Experience

PARKS & RECREATION

Bolingbrook Park District

- Hidden Oaks Nature Center Site Improvements

BR Ryall YMCA

- Phase 1 Renovation

Carol Stream Park District

- Coral Cove Concessions Renovation

Dundee Township Park District

- Randall Oaks Zoo Small Animal Building

Glen Ellyn Park District

- Ackerman Center Addition and Renovation

Glenview Park District

- The Grove Nature Center

Harwood Heights, Village of

- Recreation Center

Joliet Park District

- Inwood Ice Arena

Maywood Sportsman's Club

- Club Improvements

Naperville Park District

- Knoch Knolls Nature Center
- Seager Park Interpretive Center

Niles Park District

- IceLand Skate Complex
- LoVerde Sports and Recreation Center
- TAM Tennis Facility Renovations

Northbrook Park District

- Activity Center

Oak Brook Park District

- Family Locker Room Renovation

Orland Park, Village of

- Centennial Park West

Park Ridge Park District

- Maintenance Facility HVAC
- Oakton Park Facility

Plainfield Park District

- Prairie Activity & Recreation Center

Romeoville Park and Recreation District

- Pine Trail Park



EDUCATION

Bachelors, Industrial Electricity/
Engineering, Linn State Technical
College, 1995

REGISTRATIONS

Electrical Building Design Certificate,
Electric Association, 2002

Knowledge of NEC, NFPA, City of
Chicago code, IDPH, Auto CAD MEP
2009

4. Proposal Summary Sheet



PROPOSAL SUMMARY SHEET
RFP #24-059
Doogan Park Construction Engineering Services

Business Name: Wight & Company

Street Address: 2500 N. Frontage Road

City, State, Zip: Darien, IL 60561

Contact Name: Robert Ijams

Title: Director of Parks and Recreation

Phone: 630.536.6457 Fax: 630.969.7979

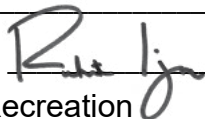
E-Mail address: rijams@wightco.com

Price Proposal

PROPOSAL TOTAL \$ 239,500

AUTHORIZATION & SIGNATURE

Name of Authorized Signee: Robert Ijams

Signature of Authorized Signee: 

Title: Director of Parks and Recreation Date: September 5, 2024

5. Certificate of Compliance





ORLAND PARK CERTIFICATE OF COMPLIANCE

The undersigned Robert Ijams, as Director of Parks and Recreation
(Enter Name of Person Making Certification) (Enter Title of Person Making Certification)

and on behalf of Wight & Company, certifies that:
(Enter Name of Business Organization)

1) BUSINESS ORGANIZATION:

The Proposer is authorized to do business in Illinois: Yes No

Federal Employer I.D.#: 36-2605840
(or Social Security # if a sole proprietor or individual)

The form of business organization of the Proposer is (*check one*):

- Sole Proprietor
- Independent Contractor (*Individual*)
- Partnership
- LLC
- Corporation Illinois March 31, 1967
(State of Incorporation) (Date of Incorporation)

2) STATUS OF OWNERSHIP

Illinois Public Act 102-0265, approved August 2021, requires the Village of Orland Park to collect "Status of Ownership" information. This information is collected for reporting purposes only. Please check the following that applies to the ownership of your business and include any certifications for the categories checked with the proposal. Business ownership categories are as defined in the Business Enterprise for Minorities, Women, and Persons with Disabilities Act, 30 ILCS 575/0.01 *et seq.*

- Minority-Owned Small Business ([SBA standards](#))
- Women-Owned Prefer not to disclose
- Veteran-Owned Not Applicable
- Disabled-Owned

How are you certifying? Certificates Attached Self-Certifying

STATUS OF OWNERSHIP FOR SUBCONTRACTORS

This information is collected for reporting purposes only. Please check the following that applies to the ownership of subcontractors.

- Minority-Owned Small Business ([SBA standards](#))
- Women-Owned Prefer not to disclose
- Veteran-Owned Not Applicable
- Disabled-Owned

3) **ELIGIBILITY TO ENTER INTO PUBLIC CONTRACTS:** Yes No

The Proposer is eligible to enter into public contracts, and is not barred from contracting with any unit of state or local government as a result of a violation of either Section 33E-3, or 33E-4 of the Illinois Criminal Code, or of any similar offense of "Bid-rigging" or "Bid-rotating" of any state or of the United States.

4) **SEXUAL HARASSMENT POLICY:** Yes No

Please be advised that Public Act 87-1257, effective July 1, 1993, 775 ILCS 5/2-105 (A) has been amended to provide that every party to a public contract must have a written sexual harassment policy in place in full compliance with 775 ILCS 5/2-105 (A) (4) and includes, at a minimum, the following information: (I) the illegality of sexual harassment; (II) the definition of sexual harassment under State law; (III) a description of sexual harassment, utilizing examples; (IV) the vendor's internal complaint process including penalties; (V) the legal recourse, investigative and complaint process available through the Department of Human Rights (the "Department") and the Human Rights Commission (the "Commission"); (VI) directions on how to contact the Department and Commission; and (VII) protection against retaliation as provided by Section 6-101 of the Act. (Illinois Human Rights Act). (emphasis added). Pursuant to 775 ILCS 5/1-103 (M) (2002), a "public contract" includes "...every contract to which the State, any of its political subdivisions or any municipal corporation is a party."

5) **EQUAL EMPLOYMENT OPPORTUNITY COMPLIANCE:** Yes No

During the performance of this Project, Proposer agrees to comply with the "Illinois Human Rights Act", 775 ILCS Title 5 and the Rules and Regulations of the Illinois Department of Human Rights published at 44 Illinois Administrative Code Section 750, et seq. The

Proposer shall: (I) not discriminate against any employee or applicant for employment because of race, color, religion, sex, marital status, national origin or ancestry, age, or physical or mental handicap unrelated to ability, or an unfavorable discharge from military service; (II) examine all job classifications to determine if minority persons or women are underutilized and will take appropriate affirmative action to rectify any such underutilization; (III) ensure all solicitations or advertisements for employees placed by it or on its behalf, it will state that all applicants will be afforded equal opportunity without discrimination because of race, color, religion, sex, marital status, national origin or ancestry, age, or physical or mental handicap unrelated to ability, or an unfavorable discharge from military service; (IV) send to each labor organization or representative of workers with which it has or is bound by a collective bargaining or other agreement or understanding, a notice advising such labor organization or representative of the Vendor's obligations under the Illinois Human Rights Act and Department's Rules and Regulations for Public Contract; (V) submit reports as required by the Department's Rules and Regulations for Public Contracts, furnish all relevant information as may from time to time be requested by the Department or the contracting agency, and in all respects comply with the Illinois Human Rights Act and Department's Rules and Regulations for Public Contracts; (VI) permit access to all relevant books, records, accounts and work sites by personnel of the contracting agency and Department for purposes of investigation to ascertain compliance with the Illinois Human Rights Act and Department's Rules and Regulations for Public Contracts; and (VII) include verbatim or by reference the provisions of this Equal Employment Opportunity Clause in every subcontract it awards under which any portion of this Agreement obligations are undertaken or assumed, so that such provisions will be binding upon such subcontractor. In the same manner as the other provisions of this Agreement, the Proposer will be liable for compliance with applicable provisions of this clause by such subcontractors; and further it will promptly notify the contracting agency and

the Department in the event any subcontractor fails or refuses to comply therewith. In addition, the Proposer will not utilize any subcontractor declared by the Illinois Human Rights Department to be ineligible for contracts or subcontracts with the State of Illinois or any of its political subdivisions or municipal corporations. Subcontract" means any agreement, arrangement or understanding, written or otherwise, between the Proposer and any person under which any portion of the Proposer's obligations under one or more public contracts is performed, undertaken or assumed; the term "subcontract", however, shall not include any agreement, arrangement or understanding in which the parties stand in the relationship of an employer and an employee, or between a Proposer or other organization and its customers. In the event of the Proposer's noncompliance with any provision of this Equal Employment Opportunity Clause, the Illinois Human Right Act, or the Rules and Regulations for Public Contracts of the Department of Human Rights the Proposer may be declared non-responsible and therefore ineligible for future contracts or subcontracts with the State of Illinois or any of its political subdivisions or municipal corporations, and this agreement may be canceled or avoided in whole or in part, and such other sanctions or penalties may be imposed or remedies involved as provided by statute or regulation.

6) **TAX CERTIFICATION:** Yes No

Contractor is current in the payment of any tax administered by the Illinois Department of Revenue, or if it is: (a) it is contesting its liability for the tax or the amount of tax in accordance with procedures established by the appropriate Revenue Act; or (b) it has entered into an agreement with the Department of Revenue for payment of all taxes due and is currently in compliance with that agreement.

7) **AUTHORIZATION & SIGNATURE:**

I certify that I am authorized to execute this Certificate of Compliance on behalf of the Contractor set forth on the Proposal, that I have personal knowledge of all the information set forth herein and that all statements, representations, that the Proposal is genuine and not collusive, and information provided in or with this Certificate are true and accurate. The undersigned, having become familiar with the Project specified, proposes to provide and furnish all of the labor, materials, necessary tools, expendable equipment and all utility and transportation services necessary to perform and complete in a workmanlike manner all of the work required for the Project.

ACKNOWLEDGED AND AGREED TO:



Signature of Authorized Officer

Robert Ijams

Name of Authorized Officer

Director of Parks and Recreation

Title

September 5, 2024

Date

6. References



REFERENCES

Provide three (3) references for which your organization has performed similar work.

Bidder's Name: Wight & Company
(Enter Name of Business Organization)

1. ORGANIZATION South Elgin Parks and Recreation Department
ADDRESS 10 N. Water Street, South Elgin, IL, 60177
PHONE NUMBER (847) 622-0003
CONTACT PERSON Kim Wascher
YEAR OF PROJECT 2024

2. ORGANIZATION Carol Stream Park District
ADDRESS 1285 Lily Ln, Carol Stream, IL 60188
PHONE NUMBER (630) 784-6100
CONTACT PERSON Sue Rini
YEAR OF PROJECT 2024

3. ORGANIZATION Bloomington Park District
ADDRESS 172 C. Circle Ave., Bloomington, IL, 60108
PHONE NUMBER (630) 529-3650
CONTACT PERSON Joe Potts
YEAR OF PROJECT 2024

7. Insurance Requirements





ORLAND PARK

INSURANCE REQUIREMENTS

Please sign and provide a policy Specimen Certificate of Insurance showing current coverages.

If awarded the contract, all Required Policy Endorsements noted in the left column in **red bold** type **MUST** be provided.

| Standard Insurance Requirements | Please provide the following coverage if box is checked. |
|-------------------------------------------------------------------------------------------------------------------------------------------------------------------------------------------------------------------------------------------------------------------------------------------------------------------------------------------------------------------------------------------------------------------------------------------------------------------------------------------------------------------------------------------------------------------------------------------------------------------------------------------------------------------------------------------------------------------------------------------------------------------------------------------------------------------------------------------------------------------------------------------------------------------------------------------------------------------------------------------------------------------------------------------------------------------------------------------------------------------------------------------------------------------------------------------------------------------------------------------------------------------------------------------------------------------------------------------------------------------------------------------------------------------------------------------------------------------------------------------------------------------------------------------------------------------------------------------------------------------|----------------------------------------------------------------------------------------------------------------------------------------------------------------------------------------------------------------------------------------------------------------------------------------------------------------------------------------------------------------------------------------------------------------------------------------------------------------------------------------------------------------------------------------------------------------------------------------------------------------------------------------------------------------------------------------------------------------------------------------------------------------------------------------------------------------------------------------------------------------------------------------------------------------------------------------------------------------------------------------------------------------------------------------------------------------------------------------------------------------------------------------------------------------------------------------------------------------------------------------------------------------------------------------------------------------------------------------------------------------------------------------------------------------------------------------------------------------------------------------------------------------------------------------------|
| <p>WORKERS' COMPENSATION & EMPLOYER LIABILITY Full Statutory Limits - Employers Liability \$500,000 – Each Accident \$500,000 – Each Employee \$500,000 – Policy Limit Waiver of Subrogation in favor of the Village of Orland Park</p> <p>AUTOMOBILE LIABILITY (ISO Form CA 0001) \$1,000,000 – Combined Single Limit Per Occurrence Bodily Injury & Property Damage. Applicable for All Company Vehicles.</p> <p>GENERAL LIABILITY (Occurrence basis) (ISO Form CG 0001) \$1,000,000 – Combined Single Limit Per Occurrence Bodily Injury & Property Damage \$2,000,000 – General Aggregate Limit \$1,000,000 – Personal & Advertising Injury \$2,000,000 – Products/Completed Operations Aggregate</p> <p>ADDITIONAL INSURED ENDORSEMENTS: <i>(Not applicable for Goods Only Purchases)</i></p> <ul style="list-style-type: none"> ISO CG 20 10 or CG 20 26 (or Equivalent) Commercial General Liability Coverage CG 20 01 Primary & Non-Contributory (or Equivalent) The Village must be named as the Primary Non-Contributory which makes the Village a priority and collects off the policy prior to any other claimants. Blanket General Liability Waiver of Subrogation - Village of Orland Park A provision that prohibits an insurer from pursuing a third party to recover damages for covered losses. | <p>LIABILITY UMBRELLA (Follow Form Policy) <input type="checkbox"/> \$1,000,000 – Each Occurrence \$1,000,000 – Aggregate <input checked="" type="checkbox"/> \$2,000,000 – Each Occurrence \$2,000,000 – Aggregate <input type="checkbox"/> Other: _____ EXCESS MUST COVER: General Liability, Automobile Liability, Employers' Liability</p> <p>PROFESSIONAL LIABILITY <input type="checkbox"/> \$1,000,000 Limit – Claims Made Form, Indicate Retroactive Date <input checked="" type="checkbox"/> \$2,000,000 Limit – Claims Made Form, Indicate Retroactive Date <input type="checkbox"/> Other: _____ Deductible not-to-exceed \$50,000 without prior written approval</p> <p><input type="checkbox"/> BUILDERS RISK Completed Property Full Replacement Cost Limits – Structures under construction</p> <p><input type="checkbox"/> ENVIRONMENTAL IMPAIRMENT/POLLUTION LIABILITY \$1,000,000 Limit for bodily injury, property damage and remediation costs resulting from a pollution incident at, on or mitigating beyond the job site</p> <p><input type="checkbox"/> CYBER LIABILITY \$1,000,000 Limit per Data Breach for liability, notification, response, credit monitoring service costs, and software/property damage</p> <p><input type="checkbox"/> CG 20 37 ADDITIONAL INSURED – Completed Operations (Provide only if box is checked)</p> |

X requirements meet with excess coverage.

Any insurance policies providing the coverages required of the Consultant, excluding Professional Liability, shall be specifically endorsed to identify "The Village of Orland Park, and their respective officers, trustees, directors, officials, employees, volunteers and agents as Additional Insureds on a primary/non-contributory basis with respect to all claims arising out of operations by or on behalf of the named insured." The required additional Insured coverage shall be provided on the Insurance Service Office (ISO) CG 20 10 or CG 20 26 endorsements or an endorsement at least as broad as the above noted endorsements as determined by the Village of Orland Park. Any Village of Orland Park insurance coverage shall be deemed to be on an excess or contingent basis as confirmed by the required (ISO) CG 20 01 Additional Insured Primary & Non- Contributory Endorsement. The policies shall also contain a Waiver of Subrogation in favor of the Additional Insureds in regard to General Liability and Workers' Compensation coverage. The certificate of insurance shall also state this information on its face. Any insurance company providing coverage must hold an A-, VII rating according to Best's Key Rating Guide. Each insurance policy required shall have the Village of Orland Park expressly endorsed onto the policy as a Cancellation Notice Recipient. Should any of the policies be cancelled before the expiration date thereof, notice will be delivered in accordance with the policy provisions. Permitting the contractor, or any subcontractor, to proceed with any work prior to our receipt of the foregoing certificate and endorsements shall not be a waiver of the contractor's obligation to provide all the above insurance.

Consultant agrees that prior to any commencement of work to furnish evidence of Insurance coverage providing for at minimum the coverages, endorsements and limits described above directly to the Village of Orland Park, 14700 S. Ravinia Avenue, Orland Park, IL 60462. Failure to provide this evidence in the time frame specified and prior to beginning of work may result in the termination of the Village's relationship with the contractor.

ACCEPTED & AGREED THIS 5th DAY OF September, 2024



Signature

Authorized to execute agreements for:

Carol Roglin, CFO, Secretary of Wight & Company

Printed Name & Title

Wight & Company

Name of Company



WIGH&CO-02

EMEDEISIS

CERTIFICATE OF LIABILITY INSURANCE

DATE (MM/DD/YYYY) 8/29/2024

THIS CERTIFICATE IS ISSUED AS A MATTER OF INFORMATION ONLY AND CONFERS NO RIGHTS UPON THE CERTIFICATE HOLDER. THIS CERTIFICATE DOES NOT AFFIRMATIVELY OR NEGATIVELY AMEND, EXTEND OR ALTER THE COVERAGE AFFORDED BY THE POLICIES BELOW. THIS CERTIFICATE OF INSURANCE DOES NOT CONSTITUTE A CONTRACT BETWEEN THE ISSUING INSURER(S), AUTHORIZED REPRESENTATIVE OR PRODUCER, AND THE CERTIFICATE HOLDER.

IMPORTANT: If the certificate holder is an ADDITIONAL INSURED, the policy(ies) must have ADDITIONAL INSURED provisions or be endorsed. If SUBROGATION IS WAIVED, subject to the terms and conditions of the policy, certain policies may require an endorsement. A statement on this certificate does not confer rights to the certificate holder in lieu of such endorsement(s).

PRODUCER: Alliant Insurance Services, Inc. 701 B St 6th Fl San Diego, CA 92101
CONTACT NAME:
PHONE (A/C, No, Ext): (619) 238-1828
FAX (A/C, No):
E-MAIL ADDRESS:
INSURER(S) AFFORDING COVERAGE: INSURER A: American Zurich Insurance Company 40142
INSURER B: American Guarantee and Liability Insurance Company 26247
INSURER C: Zurich American Insurance Company 16535
INSURER D: Federal Insurance Company 20281
INSURER E: Lexington Insurance Company 19437
INSURER F:

COVERAGES CERTIFICATE NUMBER: REVISION NUMBER:

THIS IS TO CERTIFY THAT THE POLICIES OF INSURANCE LISTED BELOW HAVE BEEN ISSUED TO THE INSURED NAMED ABOVE FOR THE POLICY PERIOD INDICATED. NOTWITHSTANDING ANY REQUIREMENT, TERM OR CONDITION OF ANY CONTRACT OR OTHER DOCUMENT WITH RESPECT TO WHICH THIS CERTIFICATE MAY BE ISSUED OR MAY PERTAIN, THE INSURANCE AFFORDED BY THE POLICIES DESCRIBED HEREIN IS SUBJECT TO ALL THE TERMS, EXCLUSIONS AND CONDITIONS OF SUCH POLICIES. LIMITS SHOWN MAY HAVE BEEN REDUCED BY PAID CLAIMS.

Table with columns: INSR LTR, TYPE OF INSURANCE, ADDL INSD, SUBR WVD, POLICY NUMBER, POLICY EFF (MM/DD/YYYY), POLICY EXP (MM/DD/YYYY), LIMITS. Rows include Commercial General Liability, Automobile Liability, Umbrella Liability, Workers Compensation and Employers' Liability, Commercial Property, and Prof Liab. incl Poll.

DESCRIPTION OF OPERATIONS / LOCATIONS / VEHICLES (ACORD 101, Additional Remarks Schedule, may be attached if more space is required)
This certificate replaces any prior issued certificate(s).

Architects, Engineers and Contractors Pollution Liability is included on the 9/1/24-25 Lexington Insurance Professional Liability policy MKLV015136242 at \$5,000,000 Each Claim limit.

Proof of Insurance Only.

CERTIFICATE HOLDER: Evidence of Insurance Only. X requirements meet with excess coverage.
CANCELLATION: SHOULD ANY OF THE ABOVE DESCRIBED POLICIES BE CANCELLED BEFORE THE EXPIRATION DATE THEREOF, NOTICE WILL BE DELIVERED IN ACCORDANCE WITH THE POLICY PROVISIONS.
AUTHORIZED REPRESENTATIVE: [Signature]



CERTIFICATE OF LIABILITY INSURANCE

DATE (MM/DD/YYYY)
8/29/2024

THIS CERTIFICATE IS ISSUED AS A MATTER OF INFORMATION ONLY AND CONFERS NO RIGHTS UPON THE CERTIFICATE HOLDER. THIS CERTIFICATE DOES NOT AFFIRMATIVELY OR NEGATIVELY AMEND, EXTEND OR ALTER THE COVERAGE AFFORDED BY THE POLICIES BELOW. THIS CERTIFICATE OF INSURANCE DOES NOT CONSTITUTE A CONTRACT BETWEEN THE ISSUING INSURER(S), AUTHORIZED REPRESENTATIVE OR PRODUCER, AND THE CERTIFICATE HOLDER.

IMPORTANT: If the certificate holder is an ADDITIONAL INSURED, the policy(ies) must have ADDITIONAL INSURED provisions or be endorsed. If SUBROGATION IS WAIVED, subject to the terms and conditions of the policy, certain policies may require an endorsement. A statement on this certificate does not confer rights to the certificate holder in lieu of such endorsement(s).

| | | |
|----------------------------------------------------------------------------------------|----------------------------------------------------------------|----------------|
| PRODUCER Alliant Insurance Services, Inc. 701 B St 6th Fl San Diego, CA 92101 | CONTACT NAME: | |
| | PHONE (A/C, No, Ext): (619) 238-1828 | FAX (A/C, No): |
| INSURED Wight & Company 2500 North Frontage Road Darien, IL 60561 | E-MAIL ADDRESS: | |
| | INSURER(S) AFFORDING COVERAGE | |
| | INSURER A : American Zurich Insurance Company | NAIC # 40142 |
| | INSURER B : American Guarantee and Liability Insurance Company | 26247 |
| | INSURER C : Zurich American Insurance Company | 16535 |
| | INSURER D : Federal Insurance Company | 20281 |
| | INSURER E : Lexington Insurance Company | 19437 |
| | INSURER F : | |

COVERAGES

CERTIFICATE NUMBER:

REVISION NUMBER:

THIS IS TO CERTIFY THAT THE POLICIES OF INSURANCE LISTED BELOW HAVE BEEN ISSUED TO THE INSURED NAMED ABOVE FOR THE POLICY PERIOD INDICATED. NOTWITHSTANDING ANY REQUIREMENT, TERM OR CONDITION OF ANY CONTRACT OR OTHER DOCUMENT WITH RESPECT TO WHICH THIS CERTIFICATE MAY BE ISSUED OR MAY PERTAIN, THE INSURANCE AFFORDED BY THE POLICIES DESCRIBED HEREIN IS SUBJECT TO ALL THE TERMS, EXCLUSIONS AND CONDITIONS OF SUCH POLICIES. LIMITS SHOWN MAY HAVE BEEN REDUCED BY PAID CLAIMS.

| INSR LTR | TYPE OF INSURANCE | ADDL INSD | SUBR WVD | POLICY NUMBER | POLICY EFF (MM/DD/YYYY) | POLICY EXP (MM/DD/YYYY) | LIMITS | |
|----------|--------------------------------------------------------------------------------------------------------------------------------------------------------------------------------------------------------------------------------------------------------------------------------------------------------------------|-----------|----------|---------------|-------------------------|-------------------------|---------------------------------------------------------------------------------|---------------|
| A | <input checked="" type="checkbox"/> COMMERCIAL GENERAL LIABILITY <input type="checkbox"/> CLAIMS-MADE <input checked="" type="checkbox"/> OCCUR GEN'L AGGREGATE LIMIT APPLIES PER: <input type="checkbox"/> POLICY <input checked="" type="checkbox"/> PROJECT <input type="checkbox"/> LOC OTHER: | X | | GLO081684001 | 9/1/2024 | 9/1/2025 | EACH OCCURRENCE | \$ 1,000,000 |
| | | | | | | | DAMAGE TO RENTED PREMISES (Ea occurrence) | \$ 500,000 |
| | | | | | | | MED EXP (Any one person) | \$ 15,000 |
| | | | | | | | PERSONAL & ADV INJURY | \$ 1,000,000 |
| | | | | | | | GENERAL AGGREGATE | \$ 5,000,000 |
| | | | | | | | PRODUCTS - COMP/OP AGG | \$ 5,000,000 |
| | | | | | | | | \$ |
| B | <input checked="" type="checkbox"/> AUTOMOBILE LIABILITY <input type="checkbox"/> ANY AUTO OWNED AUTOS ONLY <input type="checkbox"/> SCHEDULED AUTOS <input type="checkbox"/> HIRED AUTOS ONLY <input type="checkbox"/> NON-OWNED AUTOS ONLY | | | BAP096456701 | 9/1/2024 | 9/1/2025 | COMBINED SINGLE LIMIT (Ea accident) | \$ 1,000,000 |
| | | | | | | | BODILY INJURY (Per person) | \$ |
| | | | | | | | BODILY INJURY (Per accident) | \$ |
| | | | | | | | PROPERTY DAMAGE (Per accident) | \$ |
| | | | | | | | | \$ |
| B | <input checked="" type="checkbox"/> UMBRELLA LIAB <input type="checkbox"/> OCCUR <input type="checkbox"/> EXCESS LIAB <input type="checkbox"/> CLAIMS-MADE DED <input checked="" type="checkbox"/> RETENTION \$ 10,000 | | | AUC081683801 | 9/1/2024 | 9/1/2025 | EACH OCCURRENCE | \$ 10,000,000 |
| | | | | | | | AGGREGATE | \$ |
| | | | | | | | | \$ 10,000,000 |
| C | <input checked="" type="checkbox"/> WORKERS COMPENSATION AND EMPLOYERS' LIABILITY ANY PROPRIETOR/PARTNER/EXECUTIVE OFFICER/MEMBER EXCLUDED? (Mandatory in NH) <input type="checkbox"/> Y / N If yes, describe under DESCRIPTION OF OPERATIONS below | | N / A | WC081683601 | 9/1/2024 | 9/1/2025 | <input checked="" type="checkbox"/> PER STATUTE <input type="checkbox"/> OTH-ER | \$ |
| | | | | | | | E.L. EACH ACCIDENT | \$ 1,000,000 |
| | | | | | | | E.L. DISEASE - EA EMPLOYEE | \$ 1,000,000 |
| | | | | | | | E.L. DISEASE - POLICY LIMIT | \$ 1,000,000 |
| D | <input checked="" type="checkbox"/> Commercial Property | | | 36046454 | 9/1/2024 | 9/1/2025 | | \$ 5,000,000 |
| E | <input checked="" type="checkbox"/> Prof Liab. Incl Poll | | | MKLV015136242 | 9/1/2024 | 9/1/2025 | Each Claim / Agg | \$ 5,000,000 |

DESCRIPTION OF OPERATIONS / LOCATIONS / VEHICLES (ACORD 101, Additional Remarks Schedule, may be attached if more space is required)

This certificate replaces any prior issued certificate(s).

Architects, Engineers and Contractors Pollution Liability is included on the 9/1/24-25 Lexington Insurance Professional Liability policy MKLV015136242 at \$5,000,000 Each Claim limit.

Proof of Insurance Only.

CERTIFICATE HOLDER

CANCELLATION

| | |
|-------------------------------------------------------------------------|----------------------------------------------------------------------------------------------------------------------------------------------------------------|
| Evidence of Insurance Only X requirements meet with excess coverage. | SHOULD ANY OF THE ABOVE DESCRIBED POLICIES BE CANCELLED BEFORE THE EXPIRATION DATE THEREOF, NOTICE WILL BE DELIVERED IN ACCORDANCE WITH THE POLICY PROVISIONS. |
| | AUTHORIZED REPRESENTATIVE |



WIGH&CO-02

EMEDEISIS

CERTIFICATE OF LIABILITY INSURANCE

DATE (MM/DD/YYYY) 8/29/2024

THIS CERTIFICATE IS ISSUED AS A MATTER OF INFORMATION ONLY AND CONFERS NO RIGHTS UPON THE CERTIFICATE HOLDER. THIS CERTIFICATE DOES NOT AFFIRMATIVELY OR NEGATIVELY AMEND, EXTEND OR ALTER THE COVERAGE AFFORDED BY THE POLICIES BELOW.

IMPORTANT: If the certificate holder is an ADDITIONAL INSURED, the policy(ies) must have ADDITIONAL INSURED provisions or be endorsed. If SUBROGATION IS WAIVED, subject to the terms and conditions of the policy, certain policies may require an endorsement.

Table with PRODUCER (Alliant Insurance Services, Inc.), CONTACT NAME, PHONE (619) 238-1828, INSURER(S) AFFORDING COVERAGE (American Zurich, American Guarantee and Liability, Zurich American, Federal, Lexington), and INSURED (Wight & Company).

COVERAGES CERTIFICATE NUMBER: REVISION NUMBER:

THIS IS TO CERTIFY THAT THE POLICIES OF INSURANCE LISTED BELOW HAVE BEEN ISSUED TO THE INSURED NAMED ABOVE FOR THE POLICY PERIOD INDICATED. NOTWITHSTANDING ANY REQUIREMENT, TERM OR CONDITION OF ANY CONTRACT OR OTHER DOCUMENT WITH RESPECT TO WHICH THIS CERTIFICATE MAY BE ISSUED OR MAY PERTAIN, THE INSURANCE AFFORDED BY THE POLICIES DESCRIBED HEREIN IS SUBJECT TO ALL THE TERMS, EXCLUSIONS AND CONDITIONS OF SUCH POLICIES.

Main coverage table with columns: INSR LTR, TYPE OF INSURANCE, ADDL INSD, SUBR WVD, POLICY NUMBER, POLICY EFF, POLICY EXP, LIMITS. Includes Commercial General Liability, Automobile Liability, Umbrella Liab, Workers Compensation, Commercial Property, and Prof Liab.

DESCRIPTION OF OPERATIONS / LOCATIONS / VEHICLES (ACORD 101, Additional Remarks Schedule, may be attached if more space is required) **This certificate replaces any prior issued certificate(s).**

Architects, Engineers and Contractors Pollution Liability is included on the 9/1/24-25 Lexington Insurance Professional Liability policy MKLV015136242 at \$5,000,000 Each Claim limit.

Evidence of Coverage Only

CERTIFICATE HOLDER CANCELLATION

Table with Evidence of Insurance Only (X requirements meet with excess coverage) and CANCELLATION (SHOULD ANY OF THE ABOVE DESCRIBED POLICIES BE CANCELLED BEFORE THE EXPIRATION DATE THEREOF, NOTICE WILL BE DELIVERED IN ACCORDANCE WITH THE POLICY PROVISIONS. AUTHORIZED REPRESENTATIVE signature).