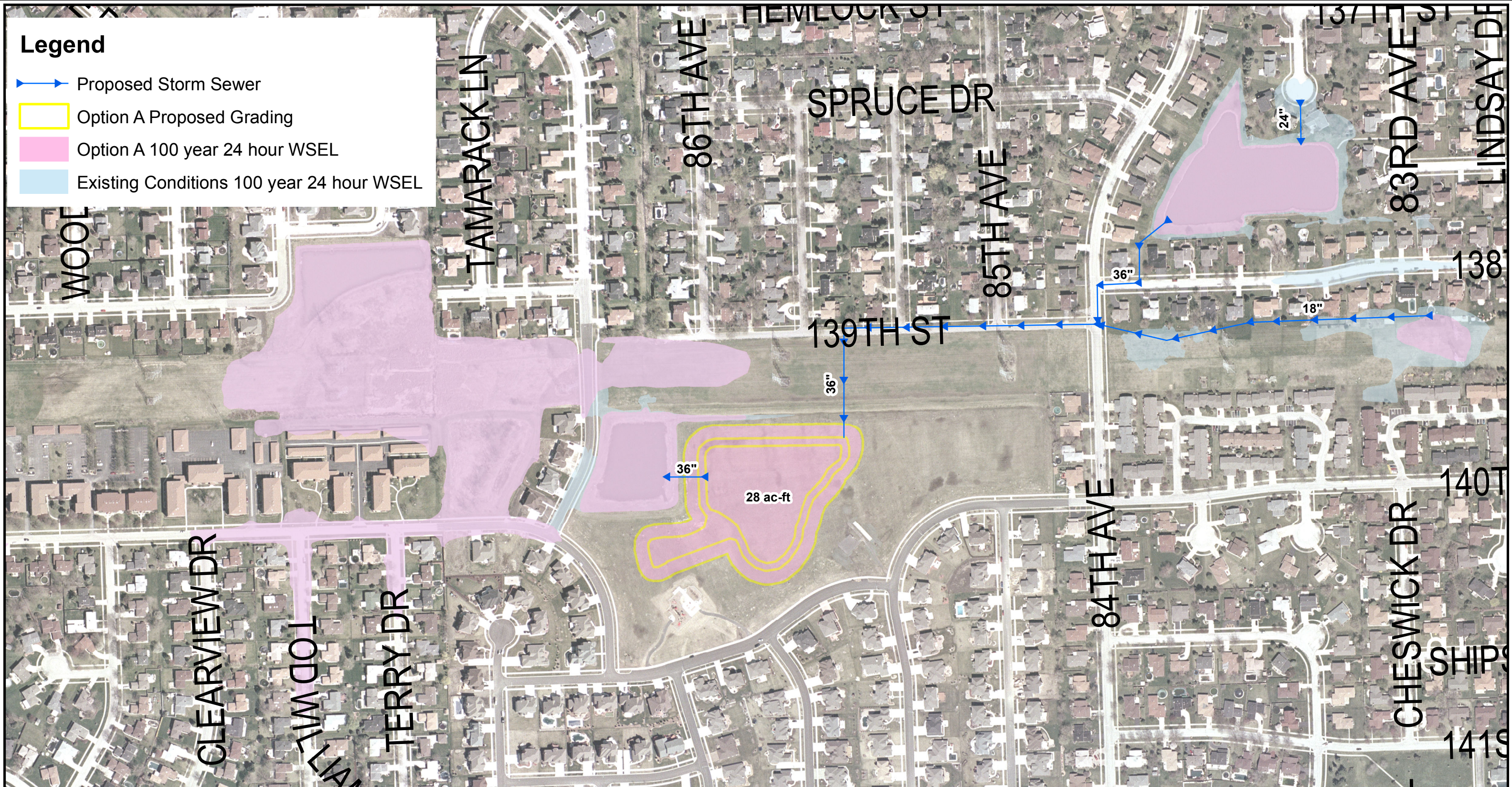


Legend

- Proposed Storm Sewer
- Option A Proposed Grading
- Option A 100 year 24 hour WSEL
- Existing Conditions 100 year 24 hour WSEL



APPROXIMATE SCALE: 1" = 300'



Christopher B. Burke Engineering, Ltd.
 9575 West Higgins Road, Suite 600
 Rosemont, IL 60018
 (847) 823-0500 / FAX (847) 823-0520

CLIENT Village of Orland Park

PROJECT NO. 14-0092

DSGN.	JMG	CHKD.	TMP
-------	-----	-------	-----

DATE 05-07-15

TITLE Evergreen View Park Basin Expansion - Option A

EXHIBIT 1

N:\ORLANDPARK\120342\GIS\PDF\Option A Proposed Grading and WSEL.mxd