

OASIS ENTERPRISES

SITE ADDRESS:
OASIS ENTERPRISES
15565 SOUTH 70th COURT
ORLAND PARK, IL 60462 (ORLAND TOWNSHIP)

BUFFER YARD TYPE D = 191 L.F.

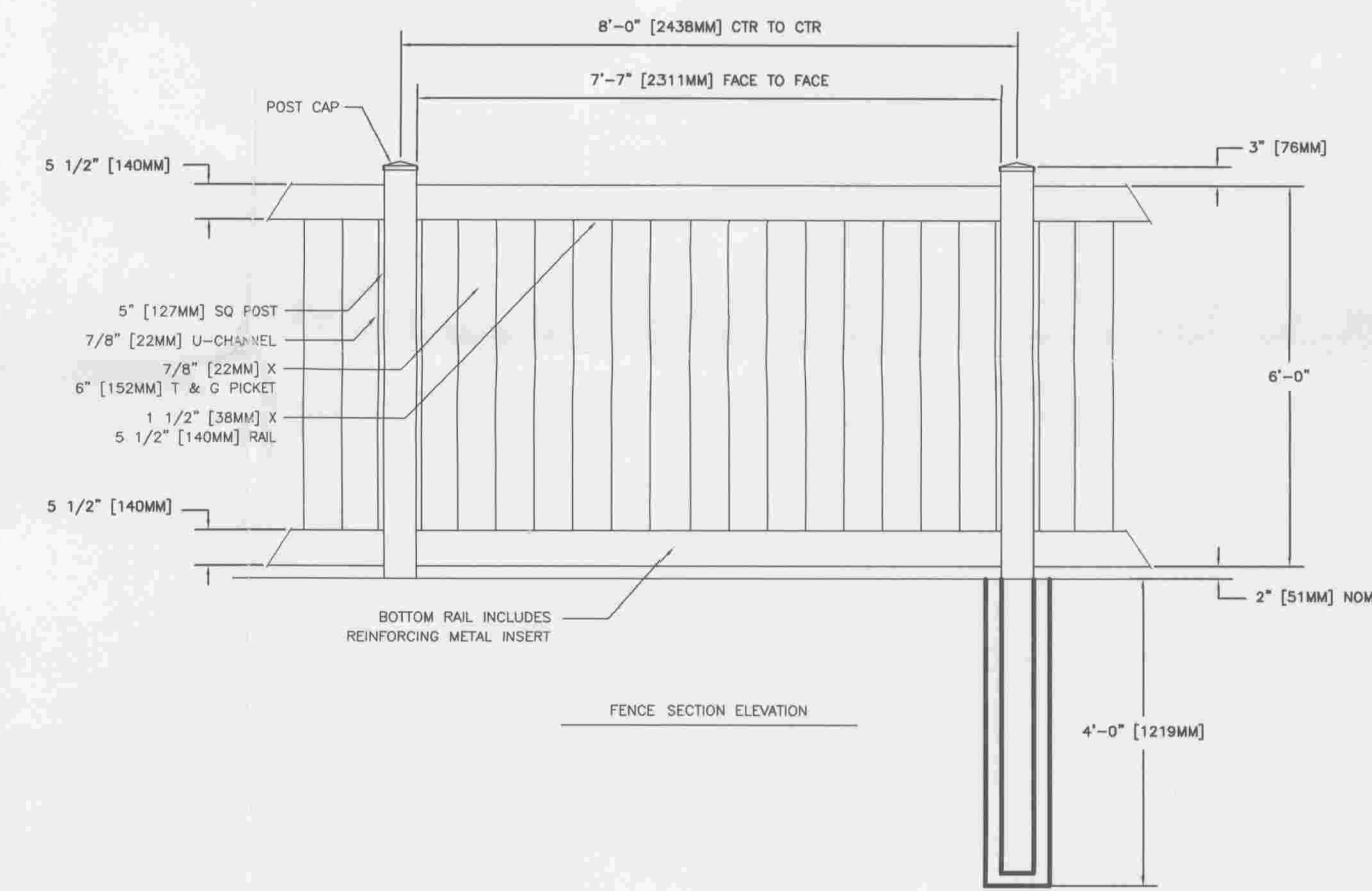
PLANT MATERIAL REQUIRED
66 / 100 L.F. X 1.91 = 13 CANOPY TREES
33 / 100 L.F. X 1.91 = 65 UNDERSTORY TREES
28 / 100 L.F. X 1.91 = 55 SHRUBS

PLANT MATERIAL PROVIDED
0 CANOPY TREES
21 UNDERSTORY TREES
0 SHRUBS

SUGGESTED MIXED GRASS - TYPE I = ±4,400 SF.
FROM GENESIS NURSERY IN TAMPICO, IL OR SIMILAR

Vegetated Drainage Swale Seed Mix
Genesis Nursery, Inc. Tampico, IL
Illinois Permit# 3669
PLS where applicable
A grass, sedge, and forb seed mix for low areas where water collects or runs after heavy rains, and the soil remains moist between rains. An integral part of any native landscape. If drainage is from parking lots, salted roads, etc. or chemically laden, toxic turf, use Sedge Ghetto or Urban Wetland/Floodplain. Best if dormant seeded.

Species	lb/ac
Agrostis alba palustris Bent Grass	2.000
Carex bebbii Bebb's Sedge	0.063
Carex cristatella Crested Sedge	0.125
Carex stipata Awl-fruited Sedge	0.125
Carex vulpinoidea Fox Sedge	0.500
Eleocharis Species Spike Rush Species	0.063
Elymus canadensis Nodding Wild Rye	1.000
Elymus virginicus Virginia Wild Rye	2.000
Glyceria striata Fowl Manna Grass	1.000
Juncus Species Rush Species	0.063
Leersia oryzoides Rice Cut Grass	0.063
Scirpus atrovirens Dark Green Rush	0.250
Scirpus cyperinus Wool Grass	0.125
Scirpus pendulus Red Bulrush	0.063
Spartina pectinata Cord Grass	0.500
Acorus americanus Sweet Flag	0.063
Alisma subcordatum Water Plantain	0.188
Asclepias incarnata Swamp Milkweed	0.063
Bidens Species Bidens Species	0.063
Eupatorium maculatum Spotted Joe Pye Weed	0.125
Helenium autumnale Sneezeweed	0.125
Iris virginica shrevei Blue Flag Iris	0.063
Liatris pycnostachya Prairie Blazingstar	0.125
Lobelia Species Lobelia Species	0.094
Mimulus ringens Monkey Flower	0.031
Polygonum lapathifolium Nodding Smartweed	0.125
Pycnanthemum virginianum Common Mt Mint	0.125
Rumex altissimus Pale Dock	0.125
Silphium perfoliatum Cup Plant	0.125
Solidago gigantea Late Goldenrod	0.125
Verbena hastata Blue Vervain	0.125
Vernonia fasciculata Common Ironweed	0.188
Total	9.814
Nominal lbs	7.814



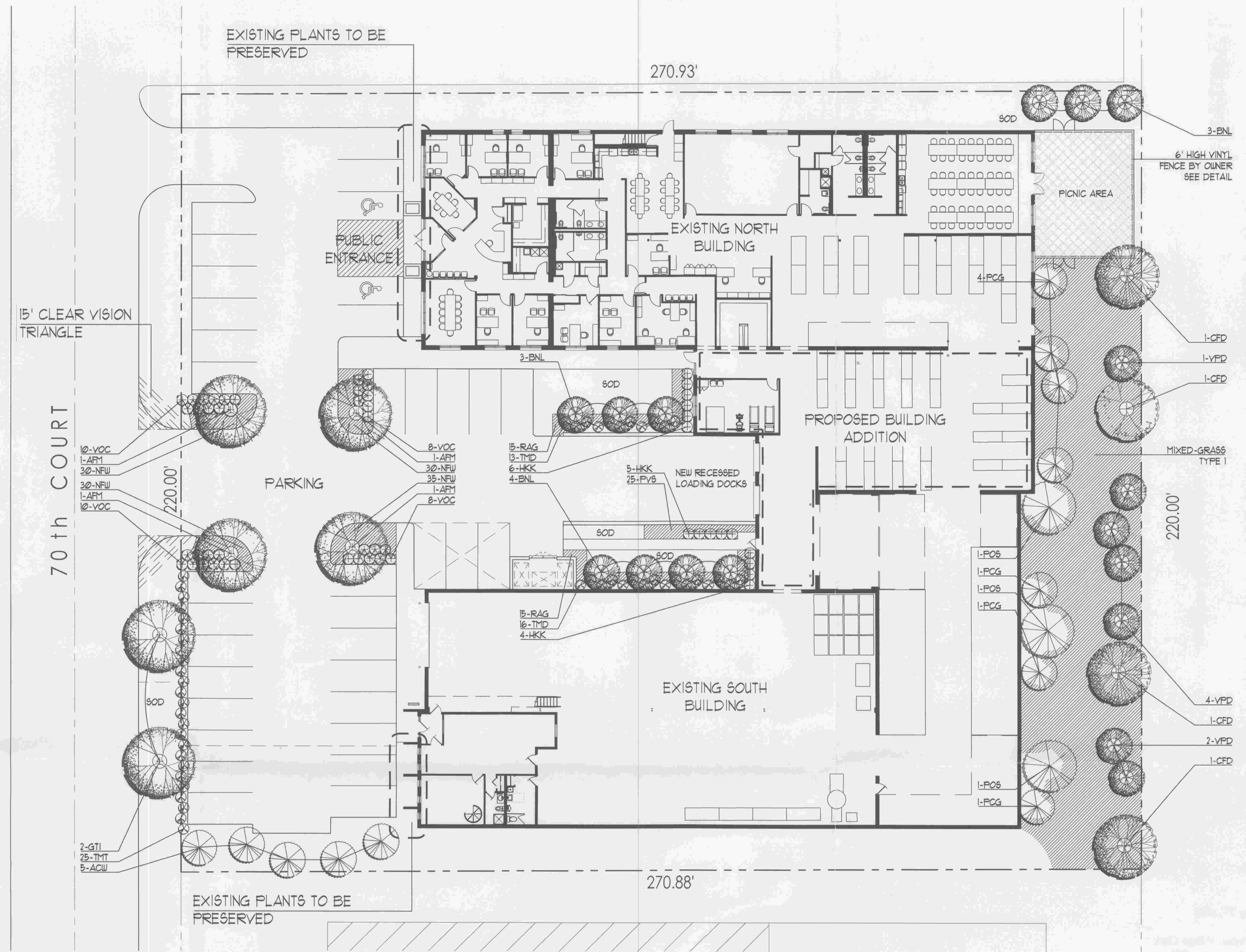
SUGGESTED VINYL FENCE DETAIL
FROM MASTER HALCO OR SIMILAR N.T.S.

LANDSCAPE NOTES

- ALL TREES SHALL BE ϕ 2 1/2" CALIPER MINIMUM. ALL ORNAMENTAL AND EVERGREEN TREES SHALL BE ϕ 6" HIGH MINIMUM. ALL SHRUBS SHALL BE 24" HIGH MINIMUM.
- ENTRANCES AND SIGNS SHALL INCORPORATE SMALL SHRUBS AND PERENNIALS WITHOUT OBSTRUCT VIEWS.
- ALL BEDS TO RELIEVE 3" HARDWOOD MULCH.
- ALL AREAS NOT SPECIFIED IN DRAWINGS SHALL BE COVERED WITH MULCH.
- ALL TURF AREAS TO BE BLUEGRASS SOD.

LANDSCAPE PLAN

1" = 20'



Quantity	Initials	SHADE TREES	Common Name	P. Size	Root	Spacing	Form	C. Zone	Comments
4	AFM	Acer freemanii 'Mamo'	Mamo Freeman Maple	3"	BB	N/A	C	5	
2	GTI	Gleditsia triacanthos var. inermis	Thornless Honeylocust	3"	BB	N/A	L	5	
EVERGREEN TREES									
5	ACW	Abies concolor	White Fir	6"	BB	N/A	P	5	
7	PCG	Pinus Cembra 'Glauca'	Dwarf Swiss Stone Pine	6"	BB	N/A	Column	5	
3	POS	Picea orientalis 'Skylands'	Skylands Oriental Spruce	6"	BB	N/A	P	5	
ORNAMENTAL TREES									
10	BNL	Betula nigra	Fox Valley River Birch	2 1/2"	BB	N/A	P	5	Multi-stem
4	CFD	Cornus florida	Flowering Dogwood	2 1/2"	BB	N/A	H	5	Multi-stem
7	VPB	Viburnum prunifolium	Blackhaw Viburnum	6"	BB	N/A	R	5	Multi-stem
FLOWERING SHRUB									
15	HKK	Hypericum kalmianum	Kalm St. Johnswort	24"	BB	30"	R	5	
36	VOC	Viburnum opulus 'compactum'	Compact European Cranberrybush Viburnum	24"	BB	36"	R	5	
EVERGREEN SHRUB									
29	TMD	Taxus x media 'Densiflora'	Dense Yew	24"	BB	36"	H	5	
25	TMT	Taxus x media 'Tauntonii'	Taunton Yew	24"	BB	30"	H	5	
GROUNDCOVERS/PERENNIALS									
125	NFW	Nepeta x faassenii 'Walker's Low'	Walker's Low' Nepeta	# 1	NA	24"	R	5	
25	PVS	Panicum virgatum 'Shenandoah'	Shenandoah' switch grass	# 1	NA	36"	NA	5	
30	RAG	Rhus aromatica 'Gro-Low'	Gro-Low Sumac	# 2	BB	36"	R	5	

LEGEND	
	SHADE TREE
	ORNAMENTAL TREE
	EVERGREEN TREE
	SMALL FLOWERING SHRUB
	EVERGREEN SHRUB
	GROUNDCOVERS &
	PERENNIALS

0 10' 20' 40' 60' 80'

RECEIVED DEC 2 0 2007

BOARD APPROVED

CASE NO. 2007-0492-5

DATE 1/21/08

W/CONDITIONS

W/O CONDITIONS



ARCHITECTURE
LAND PLANNING
INTERIOR ARCHITECTURE
LANDSCAPE ARCHITECTURE

900 RIDGE ROAD
HOMewood, ILLINOIS 60430
P:708.799.4400 F:708.799.4434
WWW.LINDENGROUPINC.COM

17005 Westview Avenue
South Holland, IL 60473
(708) 333-8338
(708) 333-0080 Fax
www.lagstee-mulder.com

Lagstee-Mulder
Construction • Development • Real Estate

DATE	DESCRIPTION
9-14-07	PER SUBMITTAL
10-16-07	LANDSCAPE SUBMITTAL
12-14-07	LANDSCAPE SUBMITTAL

213-06
PROJECT NUMBER

FILE NUMBER
10-16-07
DATE
jlm
DRAWN BY

FINAL REVIEW
COPYRIGHT - LINDEN GROUP INC.
ALL RIGHTS RESERVED.

LANDSCAPE PLAN

OASIS ENTERPRISES
SHEET NAME
L-1
SHEET 1 OF 1