



PAVING CONTRACTORS  
ASPHALT PAVING MIXTURES  
HOT-IN-PLACE RECYCLING

18100 South Indiana Avenue  
Thornton, IL 60476-1299  
708.877.7160 Fax: 708.877.5222  
[www.gallagherasphalt.com](http://www.gallagherasphalt.com)

Thursday, September 16, 2010

Edward Wilmes  
Director of Public Works & Engineering  
Village of Orland Park  
15655 Ravinia Avenue  
Orland Park, IL 60462

Re: Fountain Hills Subdivision

Dear Edward:

Please be advised we decline your offer to submit a proposal on the above referenced project.

Correspondence received from your department last fall indicated the village would require repairs on phases two and three. Each phase had a corresponding "Engineer's Statement of Probable Construction Cost". When our representative met with Rich Rittenbacher last week he outlined improvements required only for work in phase three. Since no work has been requested for phase two we are assuming the village now has deemed this work acceptable. Based on your estimate we respectfully request payment of \$11,810, the amount determined by the village as defective work. If this assumption is not true we request reasons why this work is not to be included on the requested proposal. I have included the referenced documents for your review.

Please contact me if you require anything further.

Sincerely,

A handwritten signature in black ink, appearing to read "JK", written over a white background.

Jeffrey L. Kolmodin  
Vice President

cc: CJG E-mail  
MWR e-mail  
PDD e-mail

THORNTON

CHICAGO

JOLIET

BOURBONNAIS

# Village of Orland Park

14700 Ravinia Avenue  
Orland Park, IL 60462

Developer: Distinctive Homes

Page No. 2.00

Project: Fountain Hills - Phase 2

Date 11/13/2009

By WDC

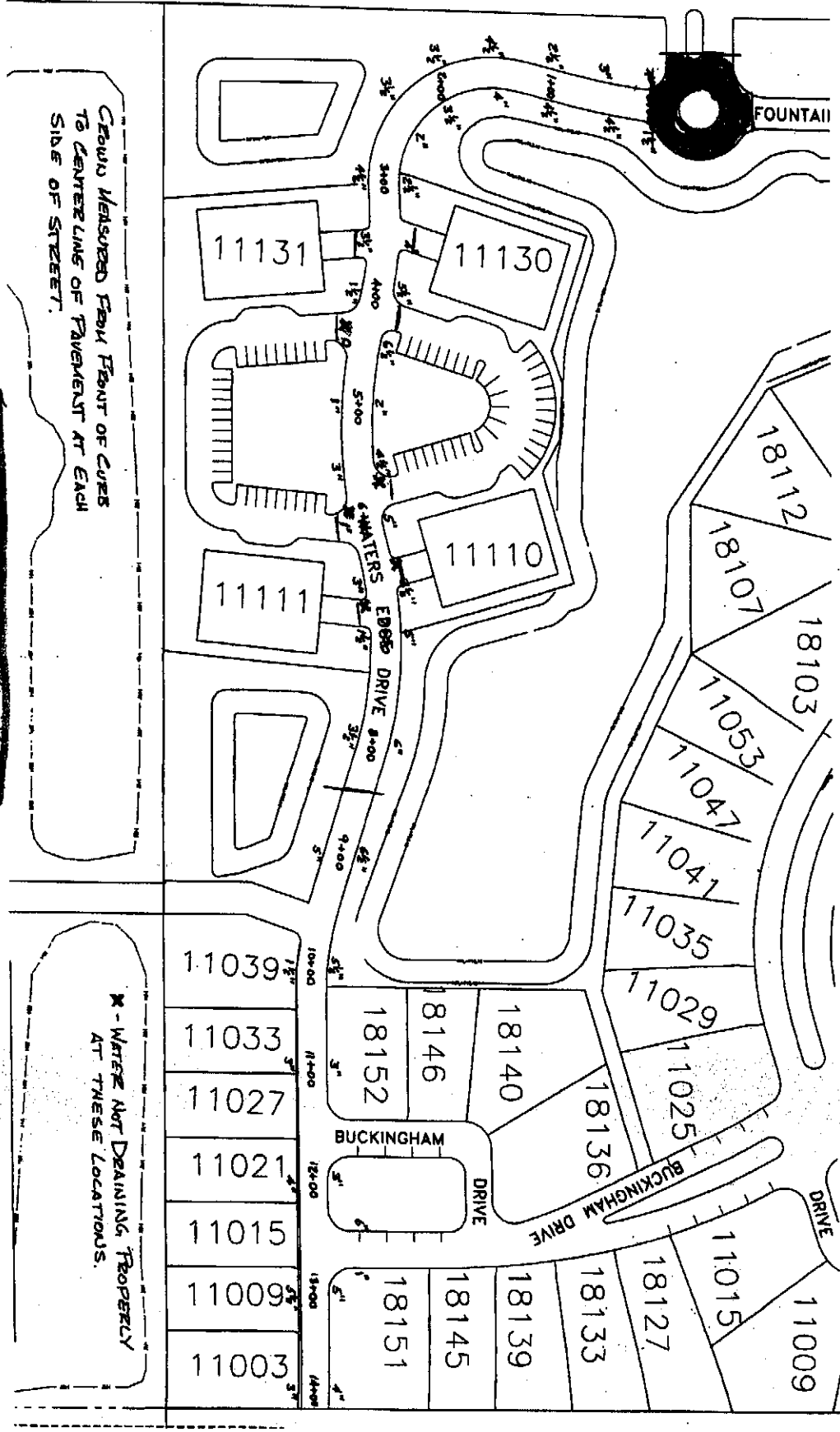
## Engineer's Statement of Probable Construction Cost

Item No.	Description	Quantity	Unit	Price	Amount
1	Milling-Edge	800	SY	\$2.20	\$ 1,760.00
2	Leveling Binder Course	50	TON	\$68.00	\$ 3,400.00
3	1.5" CL I Surface Course	95	TON	\$70.00	\$ 6,650.00
4	Sidewalk - Single Family Lots	575	SF	\$6.60	<del>\$ 3,795.00</del>
5	Sidewalk - Stub to Street & ADA	1	EA	\$450.00	<del>\$ 450.00</del>
6					
7					
8					
				<b>Subtotal</b>	<b>\$ 16,055.00</b>

} \$ 11,810.-

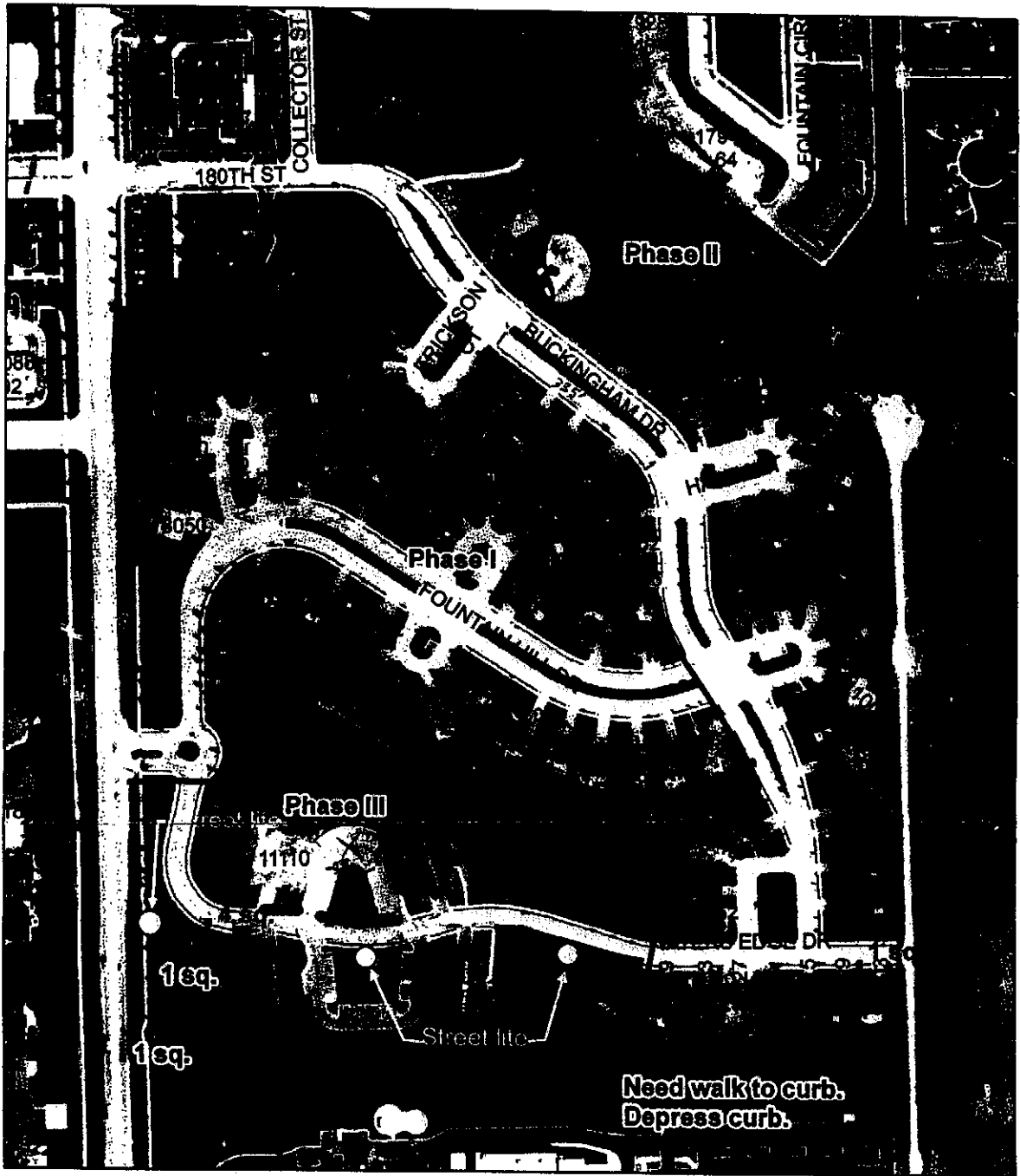
(11202)

AS CONSTRUCTED PAVEMENT GROWN - 10/13/09

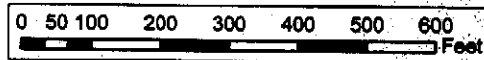


~~Foot Growth~~ 1/2 Review

IMPROVEMENT REQUESTED BY  
RICH RITTENBACHER



LEGEND	
	Missing Walk
	Pavement Resurfacing



**Sidewalks, Street Lites, and Pavement as of 06/16/09**