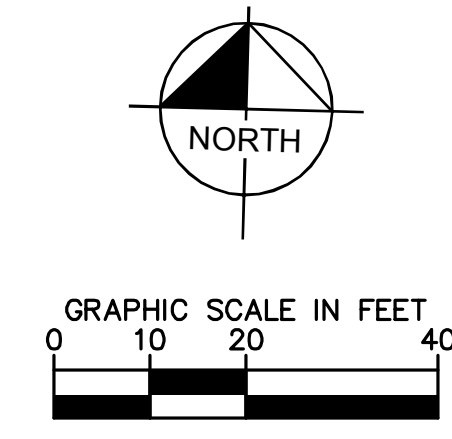
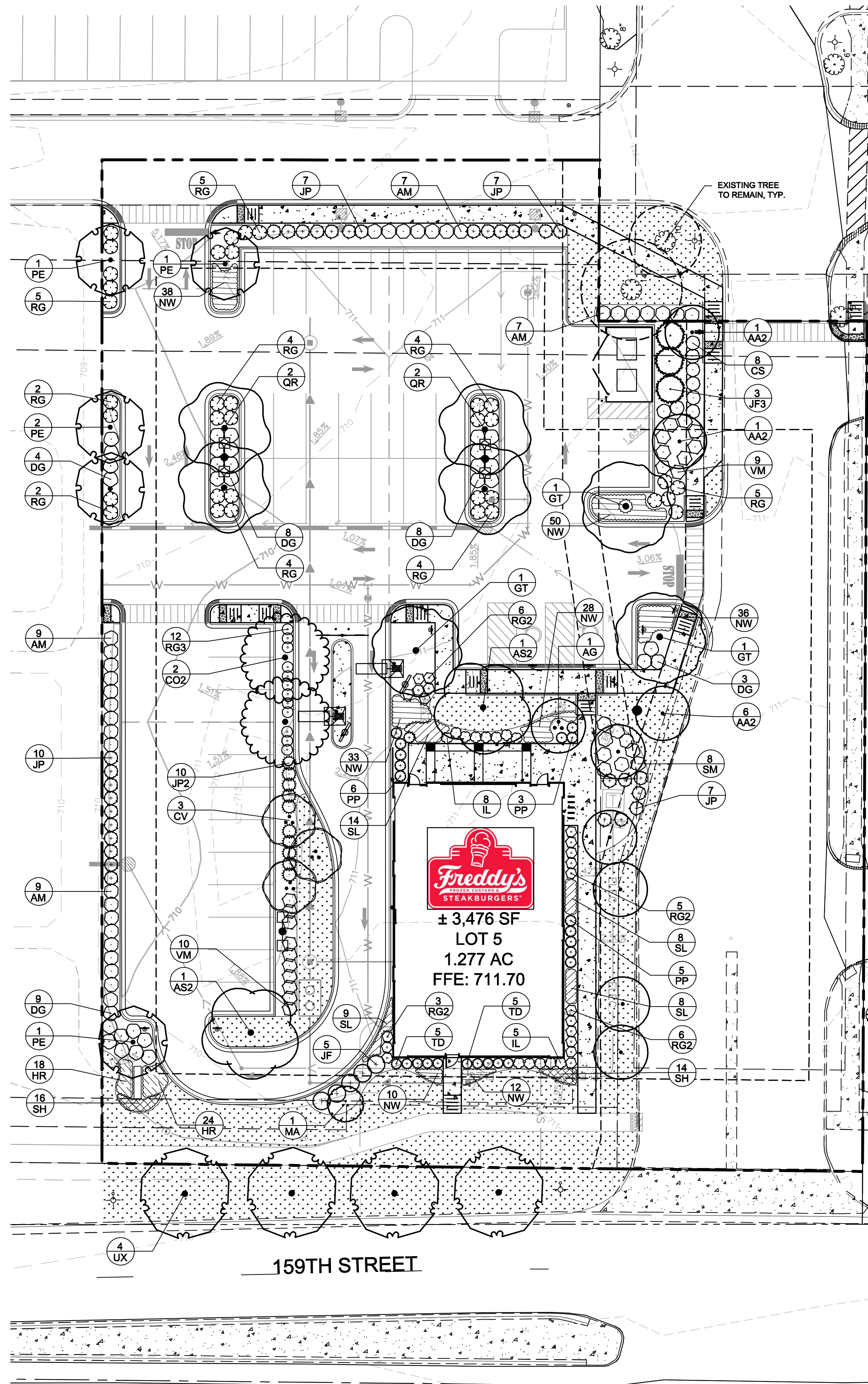


Drawing name: K:\CHL\168530000\Freddy's Frozen Custard_Orland Park_IL\2 Design\CAD\PlanSheets\L1.0 - LANDSCAPE PLAN.dwg L1.0 May 24, 2017 3:50pm by: Jason Cooper
This document, together with the concepts and designs presented herein, is intended only for the specific purpose and client for which it was prepared. Reuse of and improper reliance on this document without written authorization and adaptation by Kimley-Horn and Associates, Inc. shall be without liability to Kimley-Horn and Associates, Inc.

LANDSCAPE NOTES

1. THE LANDSCAPE CONTRACTOR SHALL BE RESPONSIBLE FOR INSTALLING MATERIALS AND PLANTS SHOWN ON THE LANDSCAPE PLAN. THE CONTRACTOR IS RESPONSIBLE FOR THE COST TO REPAIR UTILITIES, ADJACENT LANDSCAPE, PUBLIC AND PRIVATE PROPERTY THAT IS DAMAGED BY THE CONTRACTOR OR THEIR SUBCONTRACTOR'S OPERATIONS DURING INSTALLATION OR DURING THE SPECIFIED MAINTENANCE PERIOD. CALL FOR UTILITY LOCATIONS PRIOR TO ANY EXCAVATION.
2. THE CONTRACTOR SHALL REPORT ANY DISCREPANCY IN PLAN VS. FIELD CONDITIONS IMMEDIATELY TO THE LANDSCAPE ARCHITECT, PRIOR TO CONTINUING WITH THAT PORTION OF WORK.
3. THE CONTRACTOR SHALL BE RESPONSIBLE FOR THE REPAIR OF ANY OF THEIR TRENCHES OR EXCAVATIONS THAT SETTLE.
4. ALL NURSERY STOCK SHALL BE WELL BRANCHED, HEALTHY, FULL, PRE-INOCULATED AND FERTILIZED. DECIDUOUS TREES SHALL BE FREE OF FRESH SCARS. TRUNKS WILL BE WRAPPED IF NECESSARY TO PREVENT SUN SCALD AND INSECT DAMAGE. THE LANDSCAPE CONTRACTOR SHALL REMOVE THE WRAP AT THE PROPER TIME AS A PART OF THIS CONTRACT.
5. ALL NURSERY STOCK SHALL BE GUARANTEED, BY THE CONTRACTOR, FOR ONE YEAR FROM DATE OF FINAL INSPECTION. AMENDED SOIL SHALL BE PROVIDED AND GRADED BY THE GENERAL CONTRACTOR UP TO 6 INCHES BELOW FINISHED GRADE IN TURF AREAS AND 18 INCHES IN PLANTING AREAS.
6. PLANTING AREA SOIL SHALL BE AMENDED WITH 25% SPHANGUM PEATMOSS, 5% HUMUS AND 65% PULVERIZED SOIL FOR ALL SHRUB, ORNAMENTAL GRASS, PERENNIAL AND ANNUAL BEDS. AMENDED TURF AREA SOIL SHALL BE STANDARD TOPSOIL.
7. SEED/SOD LIMIT LINES ARE APPROXIMATE. CONTRACTOR SHALL SEED/SOD ALL AREAS WHICH ARE DISTURBED BY GRADING WITH THE SPECIFIED SEED/SOD MIXES.
8. CONTRACTOR SHALL INSTALL SHREDDED HARDWOOD MULCH AT A 3" DEPTH TO ALL TREES, SHRUB, PERENNIAL, AND GROUND COVER AREAS. TREES PLACED IN AREA COVERED BY TURF SHALL RECEIVE A 4 FT WIDE MAXIMUM TREE RING WITH 3" DEPTH SHREDDED HARDWOOD MULCH. A SPADED BED EDGE SHALL SEPARATE MULCH BEDS FROM TURF OR SEEDED AREAS. A SPADED EDGE IS NOT REQUIRED ALONG CURBED EDGES.
9. INSTALLATION OF TREES WITHIN PARKWAYS SHALL BE COORDINATED IN THE FIELD WITH LOCATIONS OF UNDERGROUND UTILITIES. TREES SHALL NOT BE LOCATED CLOSER THAN 5' FROM UNDERGROUND UTILITY LINES AND NO CLOSER THAN 10' FROM UTILITY STRUCTURES.
10. DO NOT DISTURB THE EXISTING PAVING, LIGHTING, OR LANDSCAPING THAT EXISTS ADJACENT TO THE SITE UNLESS OTHERWISE NOTED ON PLAN.
11. PLANT QUANTITIES SHOWN ARE FOR THE CONVENIENCE OF THE OWNER AND JURISDICTIONAL REVIEW AGENCIES. THE CONTRACTOR IS RESPONSIBLE FOR VERIFYING ALL PLANT QUANTITIES AS DRAWN.
12. THE OWNER'S REPRESENTATIVE MAY REJECT ANY PLANT MATERIALS THAT ARE DISEASED, DEFORMED, OR OTHERWISE NOT EXHIBITING SUPERIOR QUALITY.
13. THE CONTINUED MAINTENANCE OF ALL REQUIRED LANDSCAPING SHALL BE THE RESPONSIBILITY OF THE OWNER OF THE PROPERTY ON WHICH SAID MATERIALS ARE REQUIRED. ALL PLANT MATERIALS REQUIRED BY THIS SECTION SHALL BE MAINTAINED AS LIVING VEGETATION AND SHALL BE PROMPTLY REPLACED IF THE PLANT MATERIAL HAS DIED PRIOR TO FINAL ACCEPTANCE. PLANTING AREAS SHALL BE KEPT FREE OF TRASH, LITTER, AND WEEDS AT ALL TIMES.



LANDSCAPE REQUIREMENT CALCULATIONS		
ORDINANCE	REQUIREMENT CALCULATION	LANDSCAPING PROVIDED
6-305-D.2 - LANDSCAPE PARKWAYS: 159TH STREET	PARKWAY TREES SPACED 40' O.C. PARKWAY LENGTH EXCLUDING ACCESS DRIVE = 146 LF 146 / 40 = 4 TREES	4 TREES
6-305-D.3 - LANDSCAPE CORRIDORS: (ARTERIAL CORRIDOR)	4 SHADE TREES, 2 ORNAMENTAL OR EVERGREEN TREES PER 100' CORRIDOR LENGTH EXCLUDING ACCESS DRIVE = 146 LF 146 / 100 = 1.46 1.46 X 4 = 6 SHADE TREES 1.46 X 2 = 3 ORNAMENTAL OR EVERGREEN TREES	6 SHADE TREES (5 LOCATED INTERNALLY TO SITE) 3 ORNAMENTAL TREES (LOCATED INTERNALLY TO SITE)
6-305-D.4 - LANDSCAPE BUFFER YARDS: EAST PROPERTY LINE	TYPE 1 BUFFER YARD: 3 SHADE TREES, 1 ORNAMENTAL OR EVERGREEN TREE, 16 SHRUBS PER 100' PROPERTY LINE LENGTH = 273 LF 278 / 100 = 2.78 2.78 X 3 = 9 SHADE TREES 2.78 X 1 = 3 ORNAMENTAL OR EVERGREEN TREES 2.73 X 16 = 45 SHRUBS	1 EXISTING SHADE TREE 8 PROPOSED SHADE TREES 3 EVERGREEN TREES 45 SHRUBS
6-305-D.4 - LANDSCAPE BUFFER YARDS: NORTH PROPERTY LINE	NA - NORTH BUFFER YARD PLANTINGS PROVIDED OFF LOT AS PART OF OVERALL DEVELOPMENT LANDSCAPE REQUIREMENTS.	NA
6-305-D.4 - LANDSCAPE BUFFER YARDS: WEST PROPERTY LINE	NA - WEST BUFFER YARD PLANTINGS PROVIDED OFF LOT AS PART OF OVERALL DEVELOPMENT LANDSCAPE REQUIREMENTS.	NA
6-305-D.5.a - FOUNDATION LANDSCAPING	A MINIMUM 10' WIDE ON AVERAGE FOUNDATION LANDSCAPE AREA ALONG 100% OF ALL BUILDING FACADES FRONTING PUBLIC STREETS, EXCEPT WHERE BUILDING ACCESS WALKWAYS / DRIVEWAYS OR EMERGENCY SERVICE CONNECTIONS ARE NECESSARY. A MINIMUM 7' WIDE FOUNDATION LANDSCAPE AREA SHALL BE PROVIDED ALONG 50% OF ALL BUILDING FACADES NOT FRONTING A PUBLIC STREET, EXCEPT WHERE BUILDING ACCESS WALKWAYS / DRIVEWAYS OR EMERGENCY SERVICE CONNECTIONS ARE NECESSARY. ON AVERAGE, A MINIMUM OF 1 ORNAMENTAL TREE AND SIXTEEN SHRUBS OR ORNAMENTAL GRASSES FOR EVERY 100' OF BUILDING FACE.	CONTINUOUS FOUNDATION LANDSCAPING, COMPRISED OF ORNAMENTAL TREES, SHRUBS, GROUND COVER, AND TURF GRASS, AROUND PERIMETERS OF ALL BUILDINGS, EXCEPT WHERE WALKWAYS / DRIVEWAYS OR EMERGENCY SERVICE CONNECTIONS ARE NECESSARY
6-305-D.5.b - INTERIOR LOT LANDSCAPING	A MINIMUM OF 1 TREE PER 10,000 SF OF LOT AREA APPROX. LOT AREA = 55,627 SF 55,627 / 10,000 = 6 TREES	1 EXISTING TREE 5 PROPOSED SHADE TREES
6-305-D.6.a.1 - PERIMETER PARKING LOT SCREENING	ALL PARKING LOTS SIGNIFICANTLY SCREENED FROM ADJACENT PROPERTIES AND STREETS	PARKING LOTS SCREENED FROM ADJACENT PROPERTIES AND STREETS WITH SHRUB HEDGES
6-305-D.6.a.2 - PARKING LOT ISLAND LANDSCAPING	1 PARKING LOT ISLAND FOR EVERY 10 PARKING SPACES. 1 SHADE TREE PER PARKING ISLAND. SHRUBS, ORNAMENTAL GRASSES, PERENNIALS AND GROUND COVERS IN ADDITION TO TREES IN ISLANDS. TOTAL PARKING SPACES = 42 42 / 10 = 5 ISLANDS / TREES	9 ISLANDS 9 SHADE TREES
6-305-D.7 - SIGNAGE LANDSCAPE	A MINIMUM 5' WIDE ON AVERAGE LANDSCAPE PLANTING BED AROUND THE ENTIRE BASE OF ALL GROUND SIGNS	A MINIMUM 5' AVERAGE WIDTH LANDSCAPE BED AROUND GROUND SIGN
6-305-D.8 - STORM WATER MANAGEMENT AREA LANDSCAPE	NA - DETENTION TO BE PROVIDED OFF SITE	NA

BOARD APPROVED

Case No: 2017-0490

Date: 07/17/2017

W/Conditions: _____

W/Out Conditions: X

VILLAGE OF ORLAND PARK

Kimley»Horn

© 2017 KIMLEY-HORN AND ASSOCIATES, INC.
111 WEST JACKSON BLVD., SUITE 700
PHOENIX, AZ 85003-4445
WWW.KIMLEY-HORN.COM

Freddy's
STEAKBURGERS

LANDSCAPE PLAN

FREDDY'S FROZEN CUSTARD

7402 W. 159TH STREET
ORLAND PARK, IL 60462

ORIGINAL ISSUE:
3/3/2017
KHA PROJECT NO.
168530000
SHEET NUMBER

L1.0

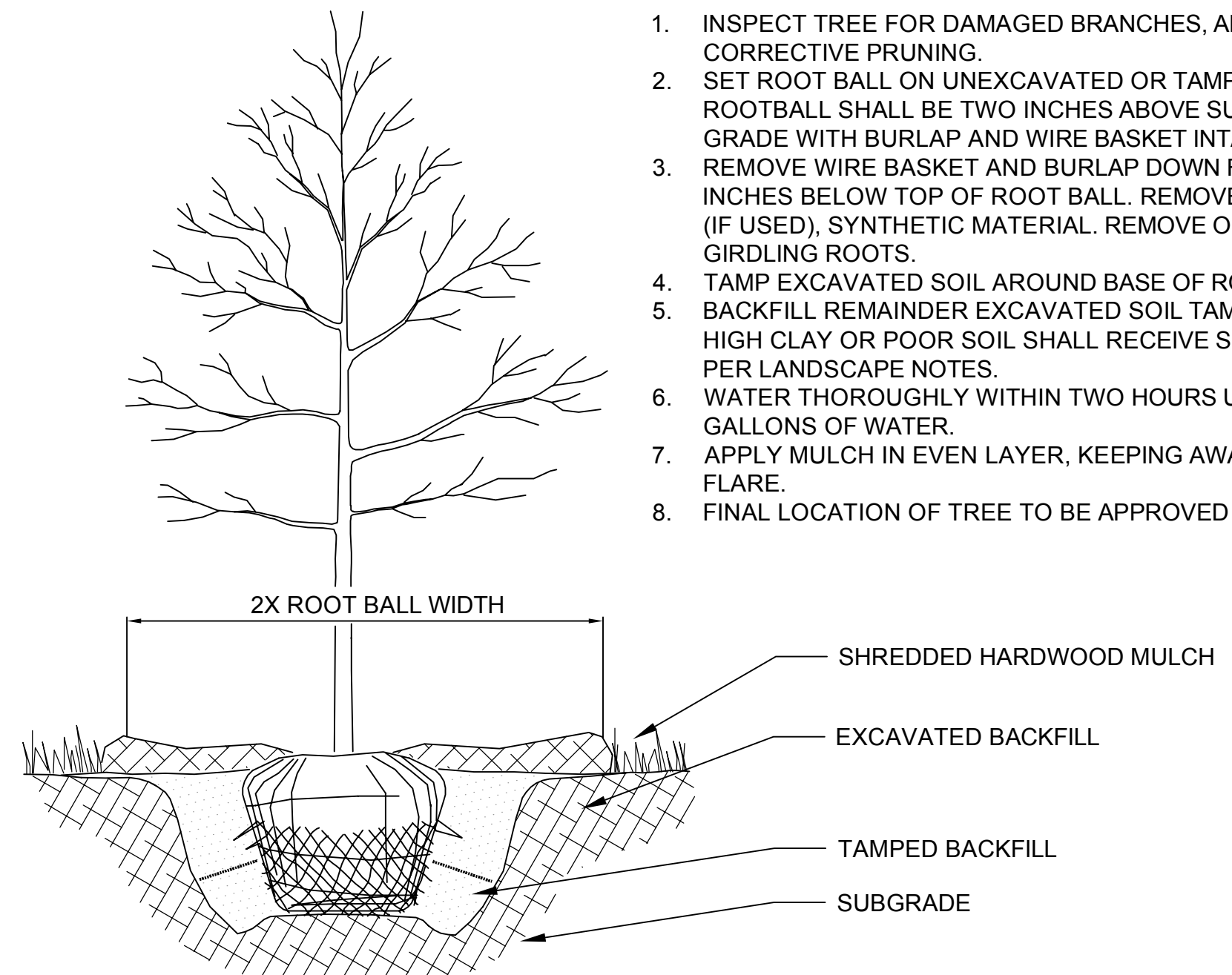
DESIGNED BY: AWS	DRAWN BY: AWS
CHECKED BY: JC	DATE: 4/26/2017
SCALE: AS NOTED	REVISIONS

Drawing name: K:\CH\168530000\Freddy's Frozen Custard_Orland Park_IL\2 Design\CAD\PlantSheet\L2.L2 - LANDSCAPE PLAN.dwg L3.0 May 24, 2017 3:50pm by: Jason Cooper
 This document, together with the concepts and designs presented herein, is intended only for the specific purpose and client for which it was prepared. Reuse of and improper reliance on this document without written authorization and adaptation by Kimley-Horn and Associates, Inc. shall be without liability to Kimley-Horn and Associates, Inc.

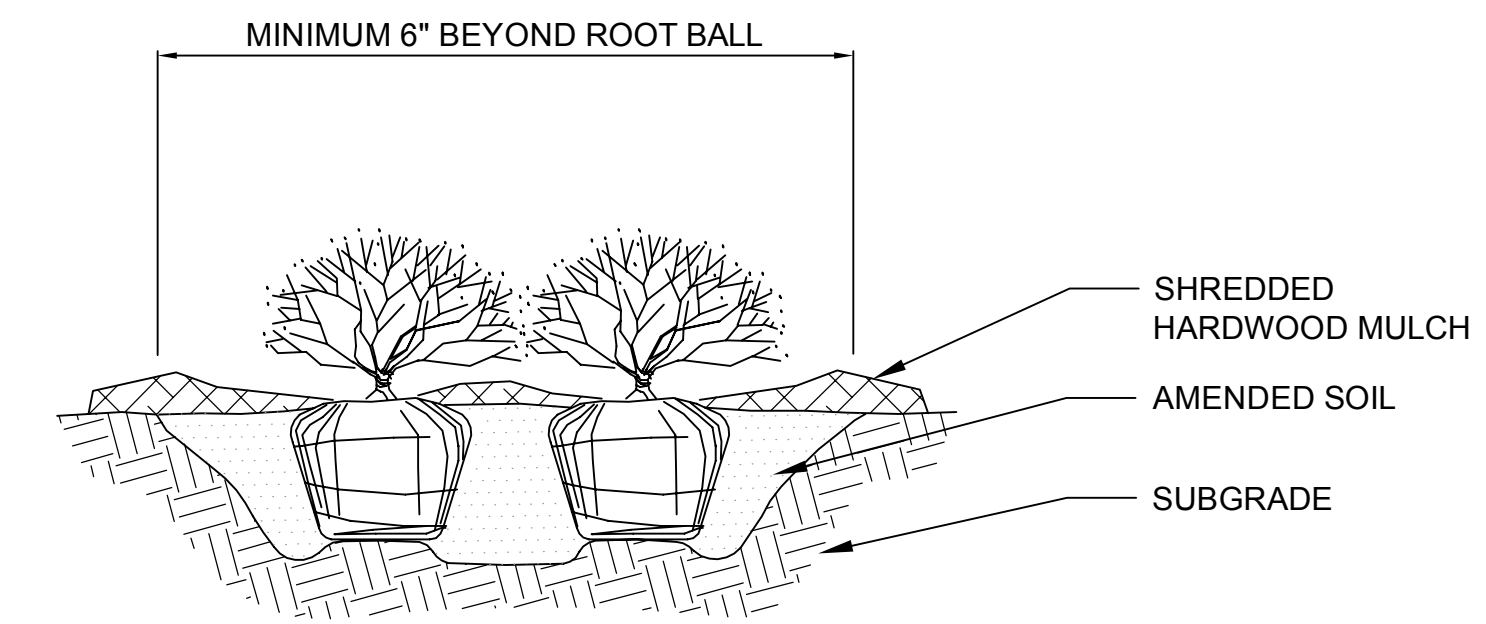


NOTES:

1. INSPECT TREE FOR DAMAGED BRANCHES, APPLY CORRECTIVE PRUNING.
2. SET ROOT BALL ON UNEXCAVATED OR TAMPED SOIL. TOP OF ROOTBALL SHALL BE TWO INCHES ABOVE SURROUNDING GRADE WITH BURLAP AND WIRE BASKET INTACT.
3. REMOVE WIRE BASKET AND BURLAP DOWN FOUR TO SIX INCHES BELOW TOP OF ROOT BALL. REMOVE ALL TWINE AND (IF USED), SYNTHETIC MATERIAL. REMOVE OR CORRECT GIRDLING ROOTS.
4. TAMP EXCAVATED SOIL AROUND BASE OF ROOTBALL.
5. BACKFILL REMAINDER EXCAVATED SOIL TAMPED LIGHTLY. HIGH CLAY OR POOR SOIL SHALL RECEIVE SOIL AMENDMENT PER LANDSCAPE NOTES.
6. WATER THOROUGHLY WITHIN TWO HOURS USING 10 TO 15 GALLONS OF WATER.
7. APPLY MULCH IN EVEN LAYER, KEEPING AWAY FROM ROOT FLARE.
8. FINAL LOCATION OF TREE TO BE APPROVED BY OWNER.



1 TREE PLANTING NTS



NOTES:

1. APPLY CORRECTIVE PRUNING.
2. SET ROOT BALL OR CONTAINER ON UNEXCAVATED OR TAMPED SOIL. TOP OF ROOTBALL (CONTAINER) SHALL BE ONE INCH ABOVE SURROUNDING GRADE. FOR LARGER SHRUBS WITHIN PLANTING BED DIG A DEEPER PIT ONLY FOR THOSE SHRUBS.
3. REMOVE BURLAP FROM TOP HALF THE LENGTH OF ROOTBALL. TWINE AND (IF USED) SYNTHETIC MATERIAL SHALL BE REMOVED FROM PLANTING BED. FOR CONTAINER GROWN SHRUBS, REMOVE CONTAINER AND LOOSEN ROOTS PRIOR TO INSTALLATION.
4. REMOVE OR CORRECT GIRDLING ROOTS.
5. PLUMB AND BACKFILL WITH AMENDED SOIL PER LANDSCAPE NOTES. WATER THOROUGHLY WITHIN TWO HOURS.
6. APPLY MULCH IN EVEN LAYER, KEEPING AWAY FROM ROOT FLARE. MULCH LIMITS FOR SHRUBS EXTEND TO ALL LIMITS OF PLANTING BED, SEE PLANS FOR BED LAYOUTS.

2 SHRUB PLANTING NTS

BOARD APPROVED

Case No: 2017-0490

Date: 07/17/2017

W/Conditions: _____

W/Out Conditions: X

VILLAGE OF ORLAND PARK

SECTION

- VG, SEE PLANS FOR DETAILS
- LEAF MULCH
 - SPADED BED EDGE
 - AMENDED SOIL
 - SUBGRADE

NOTES:

1. EXCAVATE PLANTING BED. BED HEIGHT IS TO BE 2" ABOVE FINISH GRADE AND WELL DRAINED.
2. REMOVE CONTAINER, SCORE SOIL MASS TO REDIRECT AND PREVENT CIRCLING ROOTS. CORRECT GIRDLING ROOTS.
3. PLANT MATERIAL SHALL BE LAID OUT BY FOLLOWING THE BED EDGE, WORKING TOWARDS THE CENTER OF THE BED USING TRIANGULAR (STAGGERED) SPACING AS PLAUSIBLE.
4. PLUMB AND BACKFILL WITH PLANTING MIX AS SPECIFIED IN LANDSCAPE NOTES.
5. APPLY MULCH IN EVEN LAYER, KEEPING AWAY FROM ROOT FLARE. MULCH LIMITS FOR PERENNIALS/GROUND COVER EXTEND TO ALL LIMITS OF PLANTING BED. SEE PLANS FOR BED LAYOUTS.
6. SPACING TO BE AS SPECIFIED IN THE PLANT LIST. PERENNIALS SHALL BE PLACED WITH THEIR CENTER 24" FROM EDGE OF BED.

PLANT SCHEDULE

CANOPY TREES	CODE	QTY	BOTANICAL NAME	COMMON NAME	CONT	CAL	SIZE	
	AA2	8	ACER X FREEMANII 'ARMSTRONG'	ARMSTRONG FREEMAN MAPLE	B & B	2.5" CAL MIN	SINGLE STEM	
	AS2	2	ACER MIYABEI 'STATE STREET'	STATE STREET MAPLE	B & B	2.5" CAL MIN	SINGLE STEM	
	CO2	2	CELTIS OCCIDENTALIS	COMMON HACKBERRY	B & B	2.5" CAL MIN	SINGLE STEM	
	GT	3	GLEDITSIA TRIACANTHOS INERMIS 'SHADEMASTER' TM	SHADEMASTER HONEY LOCUST	B & B	2.5" CAL MIN	SINGLE STEM	
	PE	5	PLATANUS X ACERIFOLIA 'EXCLAMATION' TM	EXCLAMATION LONDON PLANE TREE	B & B	2.5" CAL MIN	SINGLE STEM	
	QR	4	QUERCUS RUBRA	RED OAK	B & B	2.5" CAL MIN	SINGLE STEM	
	UX	4	ULMUS X 'MORTON'	ACCOLADE ELM	B & B	2.5" CAL MIN	SINGLE STEM	
EVERGREEN TREES	CODE	QTY	BOTANICAL NAME	COMMON NAME	CONT	CAL	SIZE	
	JF3	3	JUNIPERUS CHINENSIS 'FAIRVIEW'	FAIRVIEW JUNIPER	B & B		6' HT MIN	
ORNAMENTAL TREES	CODE	QTY	BOTANICAL NAME	COMMON NAME	CONT	CAL	SIZE	
	AG	1	AMELANCHIER X GRANDIFLORA 'AUTUMN BRILLIANCE'	'AUTUMN BRILLIANCE' SERVICEBERRY	B & B		6' HT MIN MULTISTEM	
	CV	3	CRATAEGUS CRUS-GALLI INERMIS	THORNLESS COCKSPUR HAWTHORN	B & B		6' HT MIN MULTISTEM	
	MA	1	MALUS X 'ADIRONDACK'	ADIRONDACK CRABAPPLE	B & B		6' HT MIN MULTISTEM	
DECIDUOUS SHRUBS	CODE	QTY	BOTANICAL NAME	COMMON NAME	CONT	SPACING	SIZE	
	AM	32	ARONIA MELANOCARPA 'MORTON' TM	IROQUIS BEAUTY BLACK CHOKEBERRY	-	SEE PLAN	36" HT MIN	
	CS	8	CORNUS SERICEA 'CARDINAL'	'CARDINAL' RED-TWIG DOGWOOD	-	SEE PLAN	36" HT MIN	
	DG	32	DIERVILLA RIVULARIS 'G2X885411'	KODIAK RED BUSH HONEYSUCKLE	-	SEE PLAN	24" HT MIN	
	IL	13	ITEA VIRGINICA 'LITTLE HENRY' TM	VIRGINIA SWEETSPIRE	-	SEE PLAN	18" HT MIN	
	RG	35	RHUS AROMATICA 'GRO-LOW'	GRO-LOW FRAGRANT SUMAC	-	SEE PLAN	18" HT MIN	
	RG2	20	RIBES ALPINUM 'GREEN MOUND'	GREEN MOUND ALPINE CURRANT	-	SEE PLAN	24" HT MIN	
	RG3	12	RIBES ALPINUM 'GREEN MOUND'	GREEN MOUND ALPINE CURRANT	-	SEE PLAN	30" HT MIN	
	SM	9	SYRINGA PATULA 'MISS KIM'	MISS KIM LILAC	-	SEE PLAN	36" HT MIN	
	VM	19	VIBURNUM DENTATUM 'BLUE MUFFIN'	SOUTHERN ARROWWOOD	-	SEE PLAN	36" HT MIN	
EVERGREEN SHRUBS	CODE	QTY	BOTANICAL NAME	COMMON NAME	CONT	SPACING	SIZE	
	JF	5	JUNIPERUS CHINENSIS 'SEA GREEN'	SEA GREEN JUNIPER	-	SEE PLAN	36" HT MIN	
	JP	31	JUNIPERUS CHINENSIS 'KALLAYS COMPACT'	KALLAY COMPACT PFITZER JUNIPER	-	SEE PLAN	24" HT MIN	
	JP2	10	JUNIPERUS CHINENSIS 'KALLAYS COMPACT'	KALLAY COMPACT PFITZER JUNIPER	-	SEE PLAN	30" HT MIN	
	PP	14	PINUS MUGO PUMILIO	DWARF MUGO PINE	-	SEE PLAN	18" HT MIN	
	TD	10	TAXUS X MEDIA 'DENSIFORMIS'	DENSE YEW	-	SEE PLAN	24" HT MIN	
PERENNIALS AND GRASSES	CODE	QTY	BOTANICAL NAME	COMMON NAME	CONT	SPACING	SIZE	SPACING
	HR	42	HEMEROCALLIS X 'ROSY RETURNS'	DAYLILY	1 GAL	18" OC		18" o.c.
	NW	207	NEPETA X FAASSENII 'WALKERS LOW'	WALKERS LOW CATMINT	1 GAL	18" OC		18" o.c.
	SH	30	SPOROBOLUS HETEROLEPIS	PRAIRIE DROPSOED	1 GAL	18" OC		18" o.c.
	SL	39	SCHIZACHYRIUM SCOPARIUM	LITTLE BLUESTEM GRASS	1 GAL	24" OC		24" o.c.
GROUND COVERS	CODE	QTY	BOTANICAL NAME	COMMON NAME	SPACING			
	-2	7,567 SF	---	SOD				

3 PERENNIAL PLANTING NTS

LANDSCAPE LIST AND DETAILS

FREDDY'S FROZEN CUSTARD

7402 W. 159TH STREET
ORLAND PARK, IL 60462

ORIGINAL ISSUE: 3/3/2017

KHA PROJECT NO. 168530000

SHEET NUMBER

SCALE: AS NOTED

DESIGNED BY: AWS

DRAWN BY: AWS

CHECKED BY: JCC

Kimley»Horn

© 2017 KIMLEY-HORN AND ASSOCIATES, INC.
111 WEST JACKSON BLVD., SUITE 700
PHONE: 312-726-9446
WWW.KIMLEY-HORN.COM

VILLAGE COMMENTS: 5/24/2017

VILLAGE COMMENTS: 4/26/2017

REVISIONS: 1

DATE: BY: