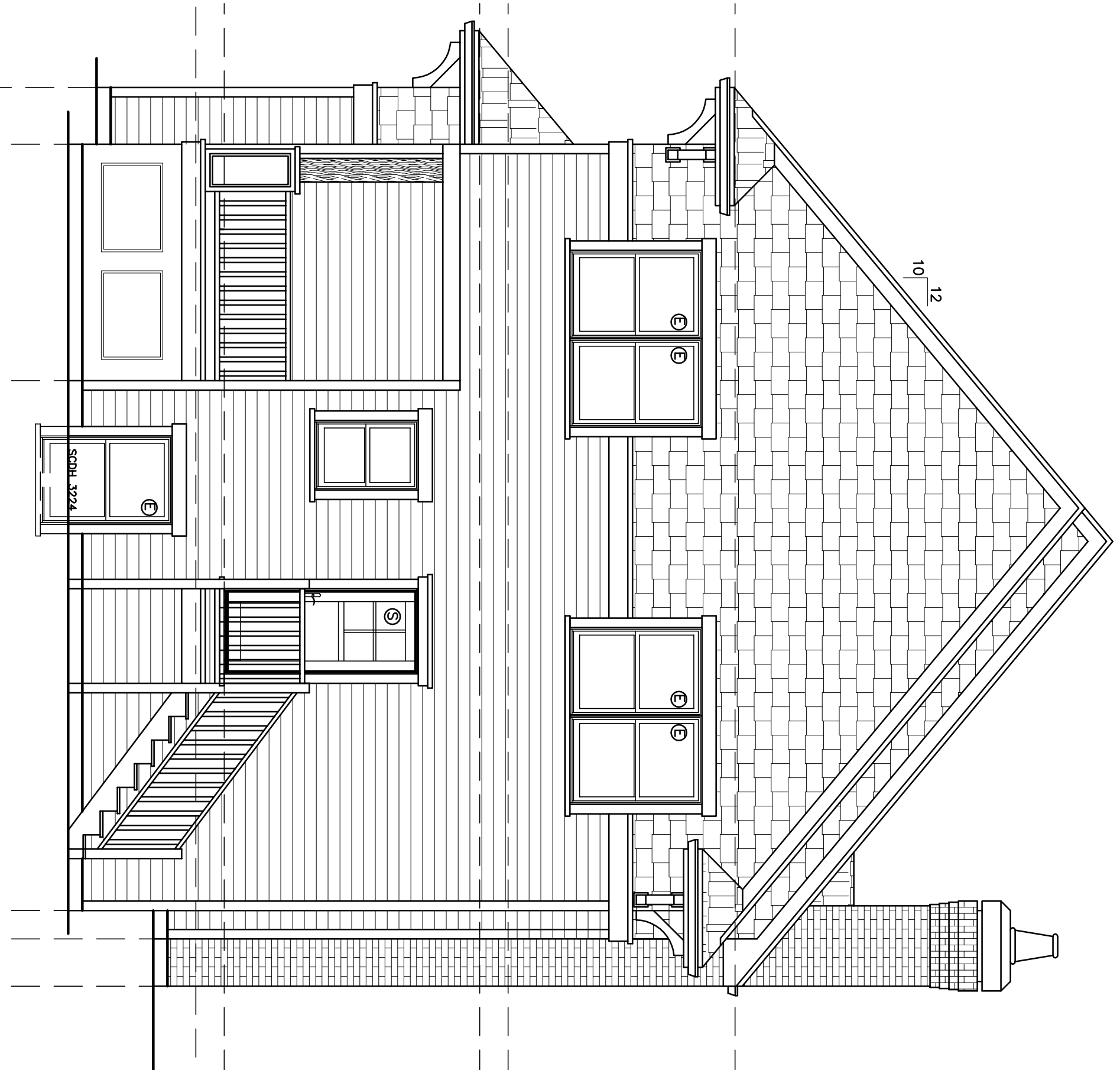


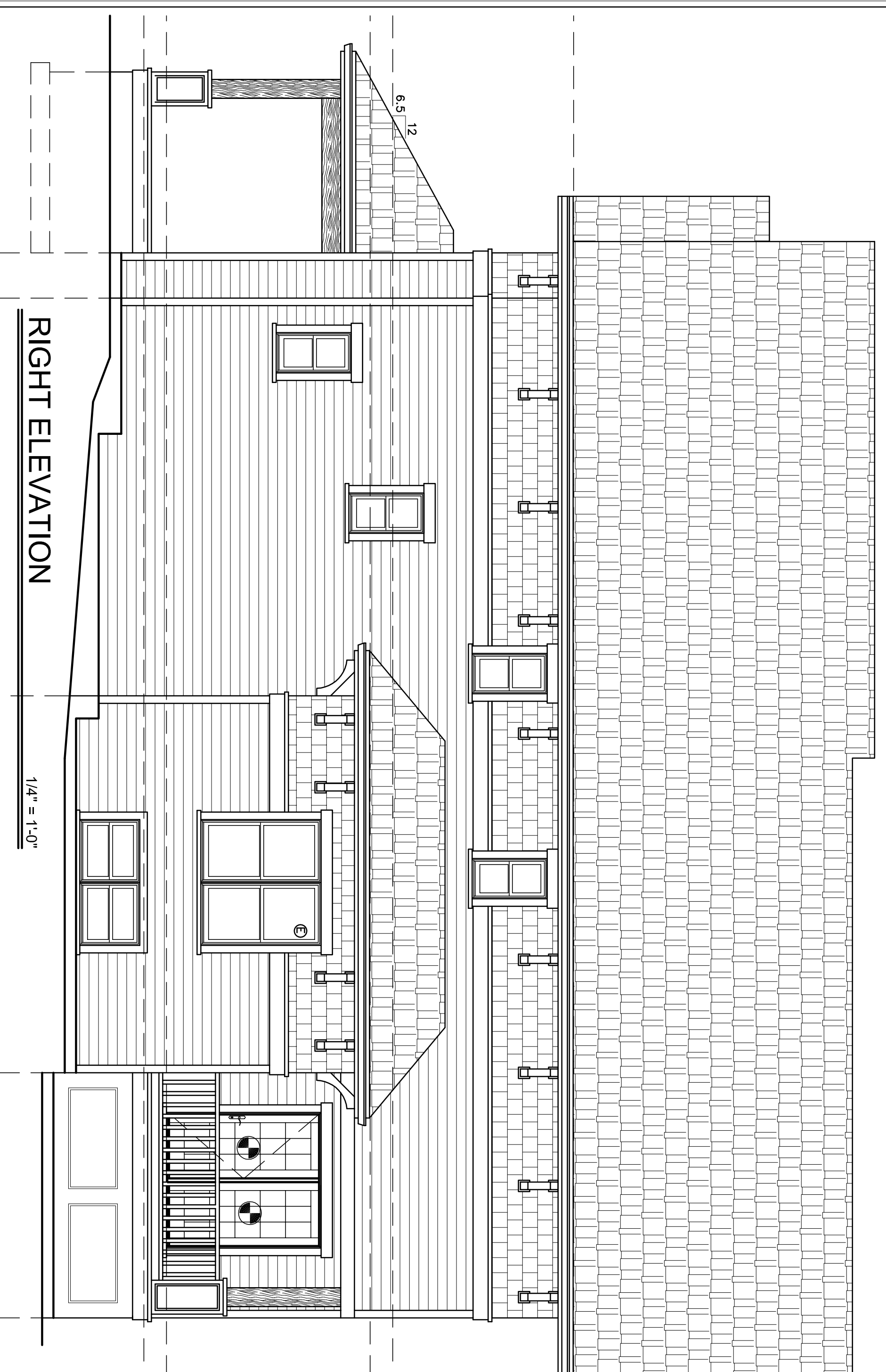
FRONT ELEVATION

1/4" = 1'-0"



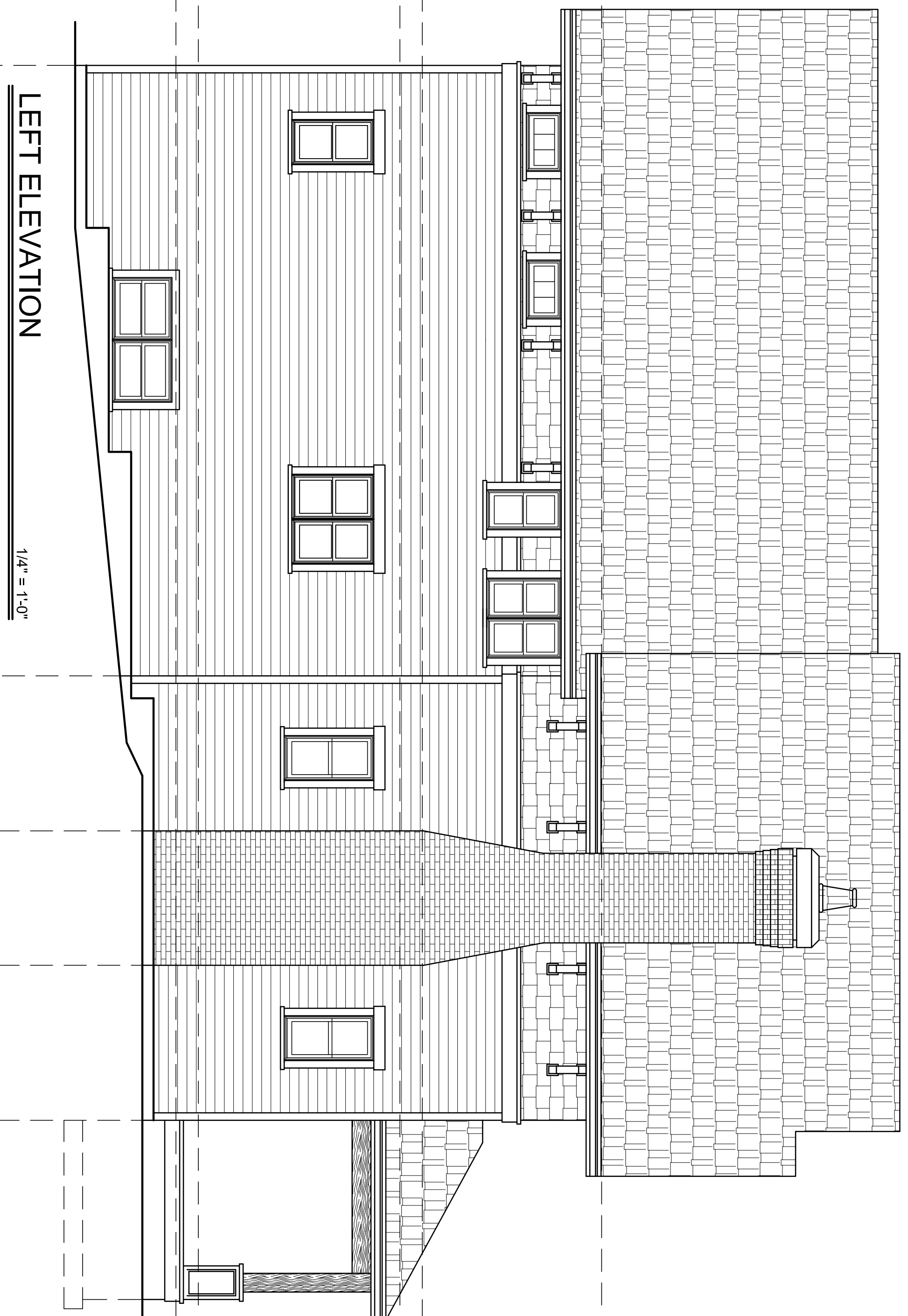
REAR ELEVATION

1/4" = 1'-0"



RIGHT ELEVATION

1/4" = 1'-0"



LEFT ELEVATION

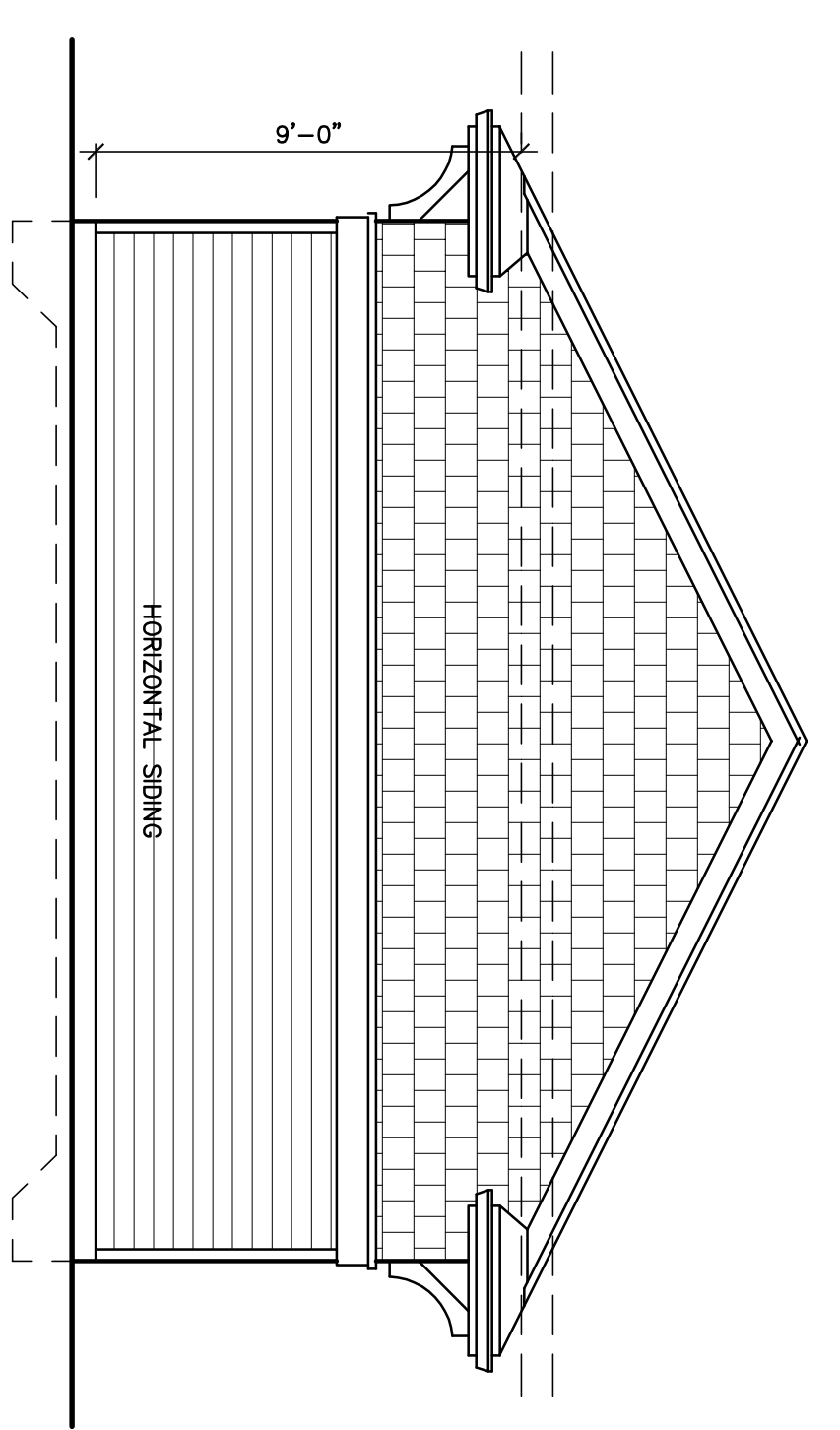
1/4" = 1'-0"

LJM Group, Inc.
Designing with the Spirit of Missouri
 P.O. Box 100
 708-404-4451
 WWW.LJMGROUP.US

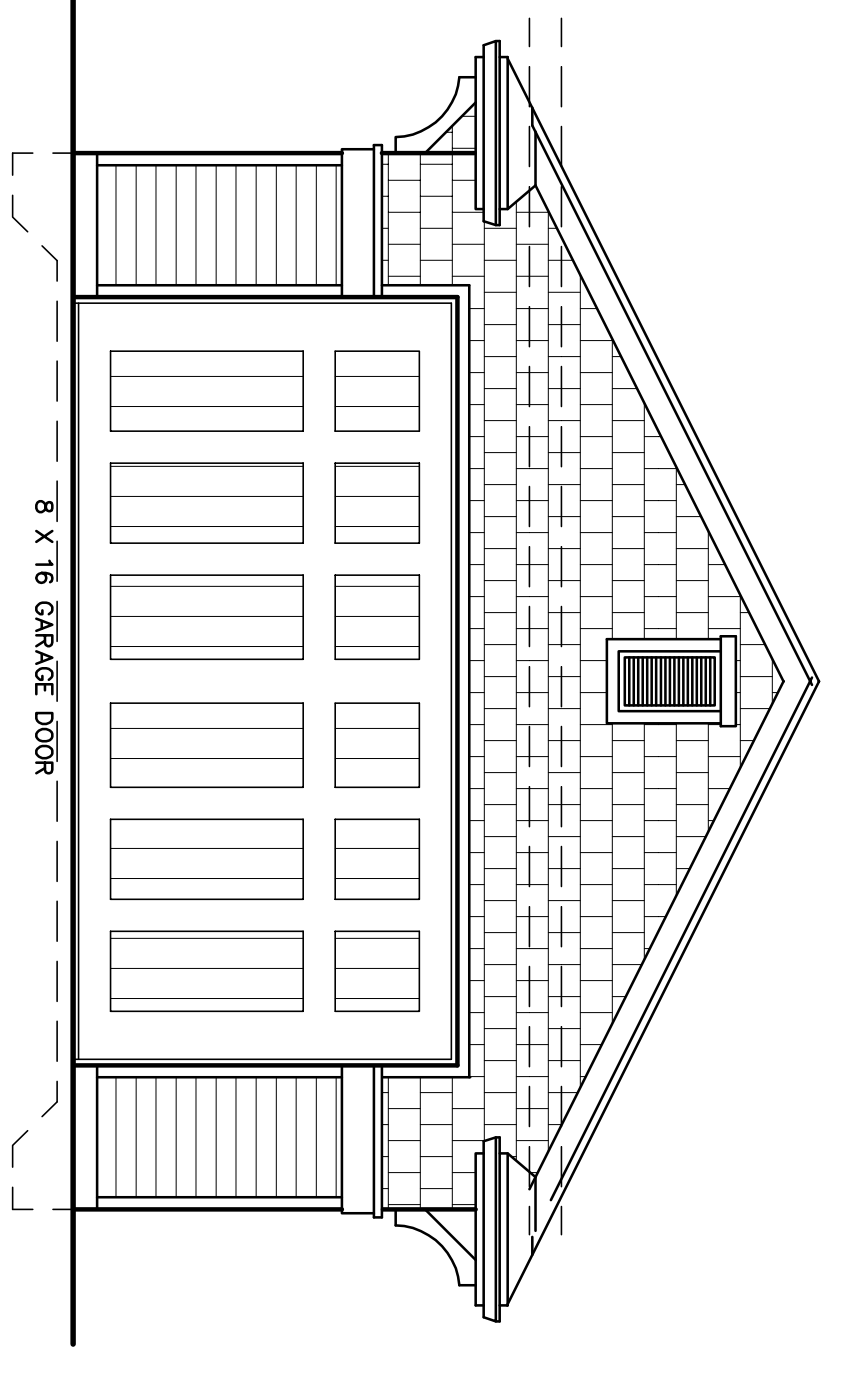
Two Story Residence
 for
 9869 W 144th PL.
 Orland Park, IL.

DATE:	4.17.2012
ISSUE:	2012-14
BY:	
CHECKED:	
SCALE:	

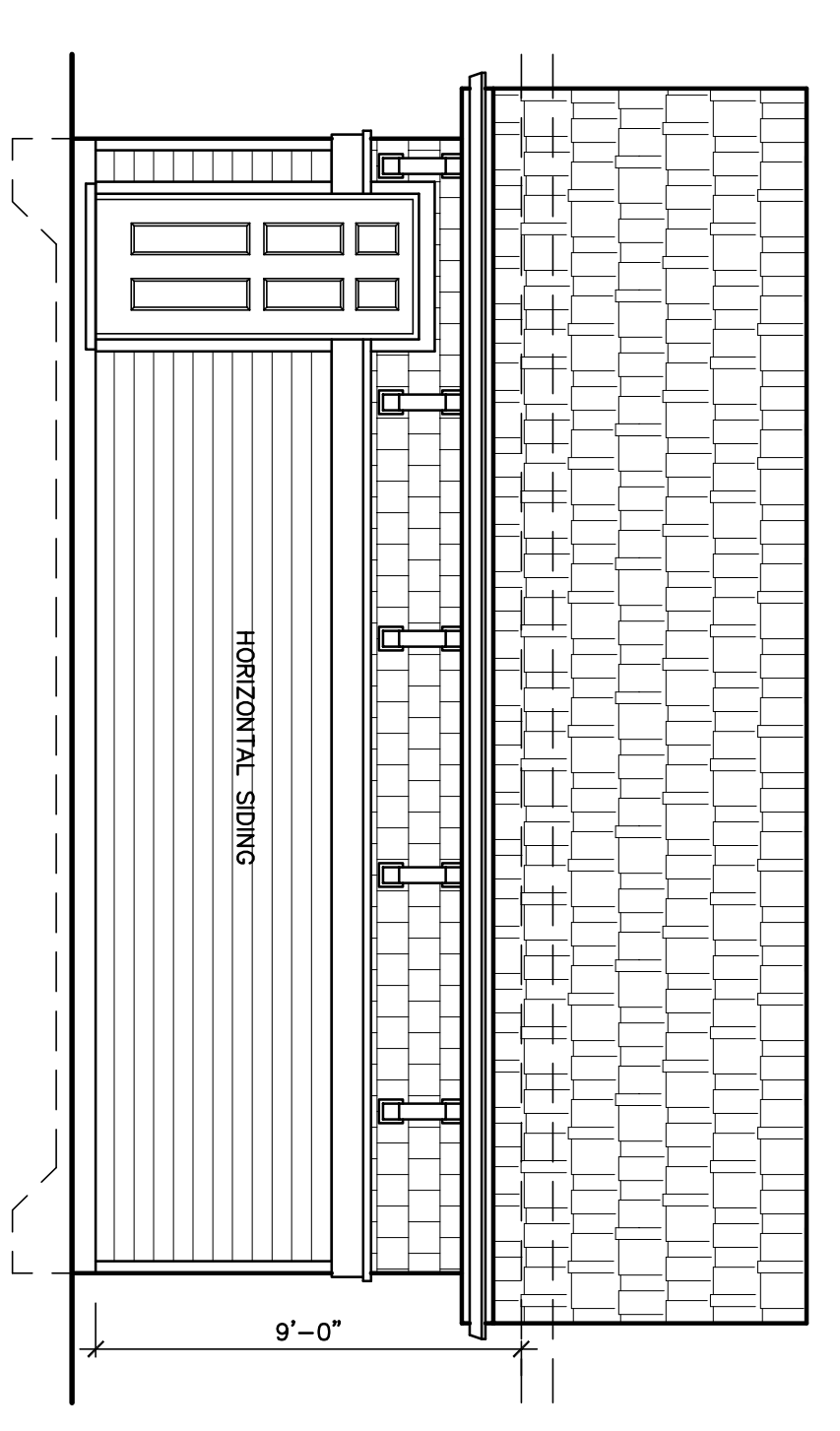
A-1.0



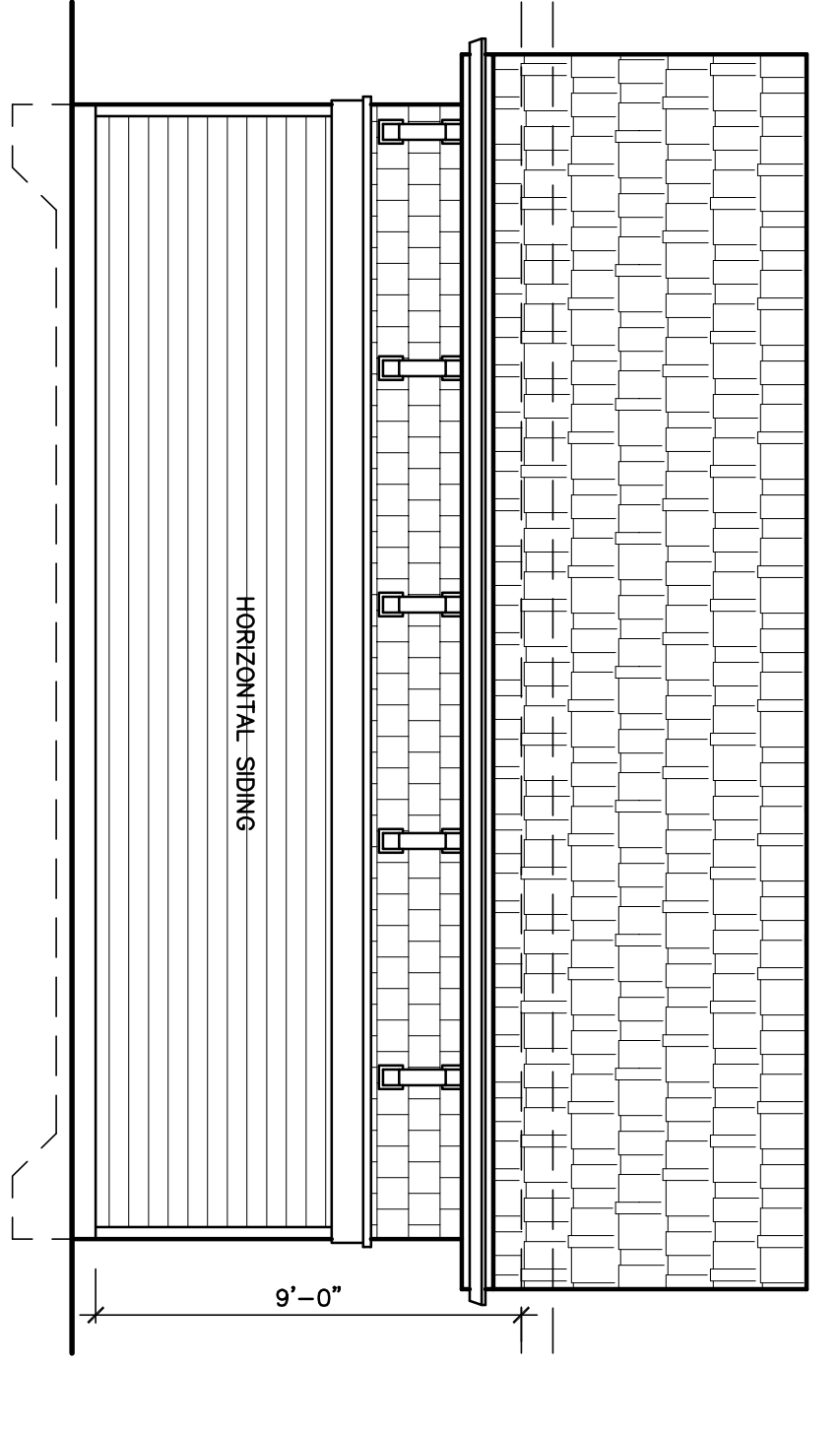
REAR ELEVATION
1/4" = 1'-0"



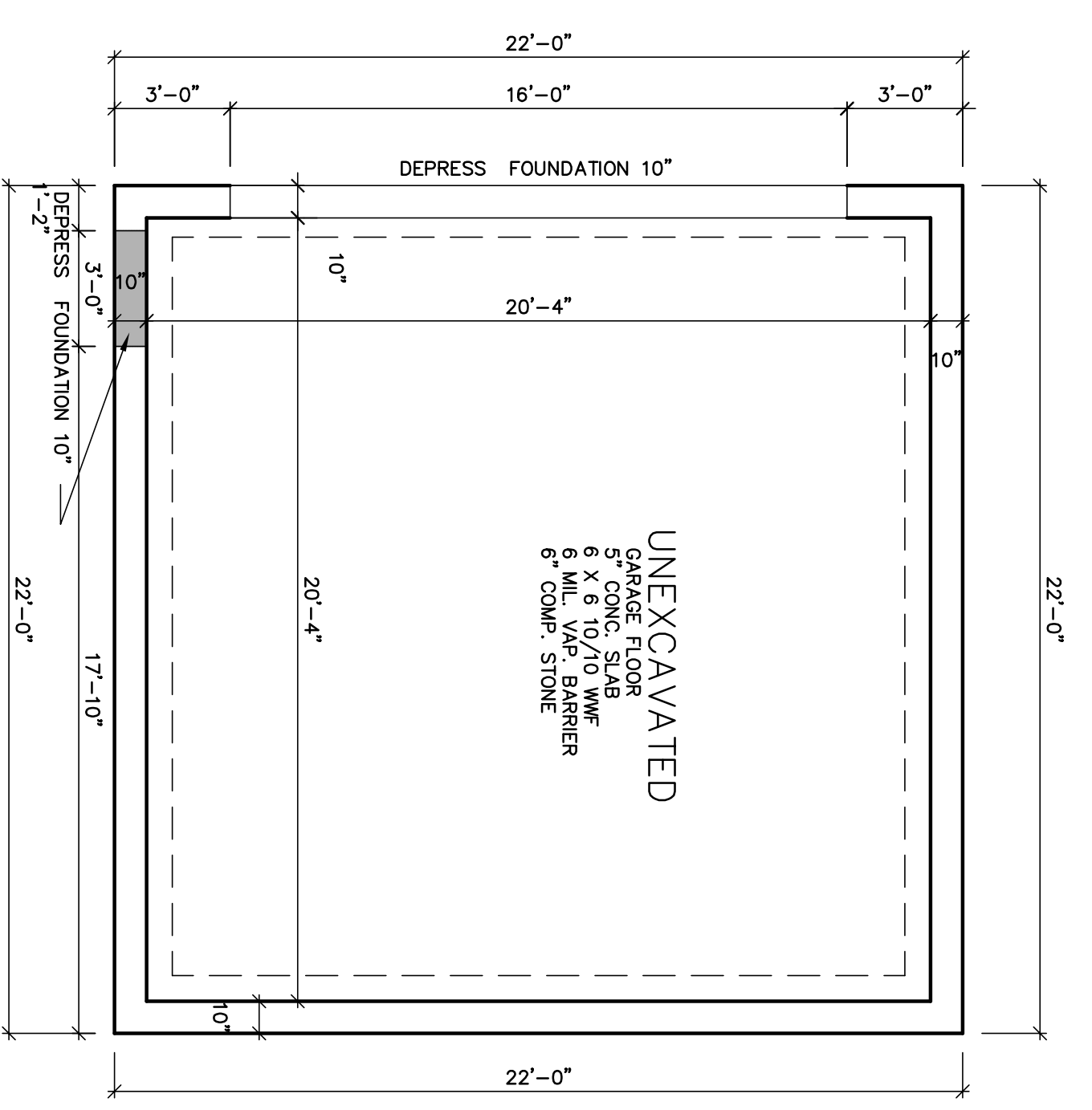
FRONT ELEVATION
1/4" = 1'-0"



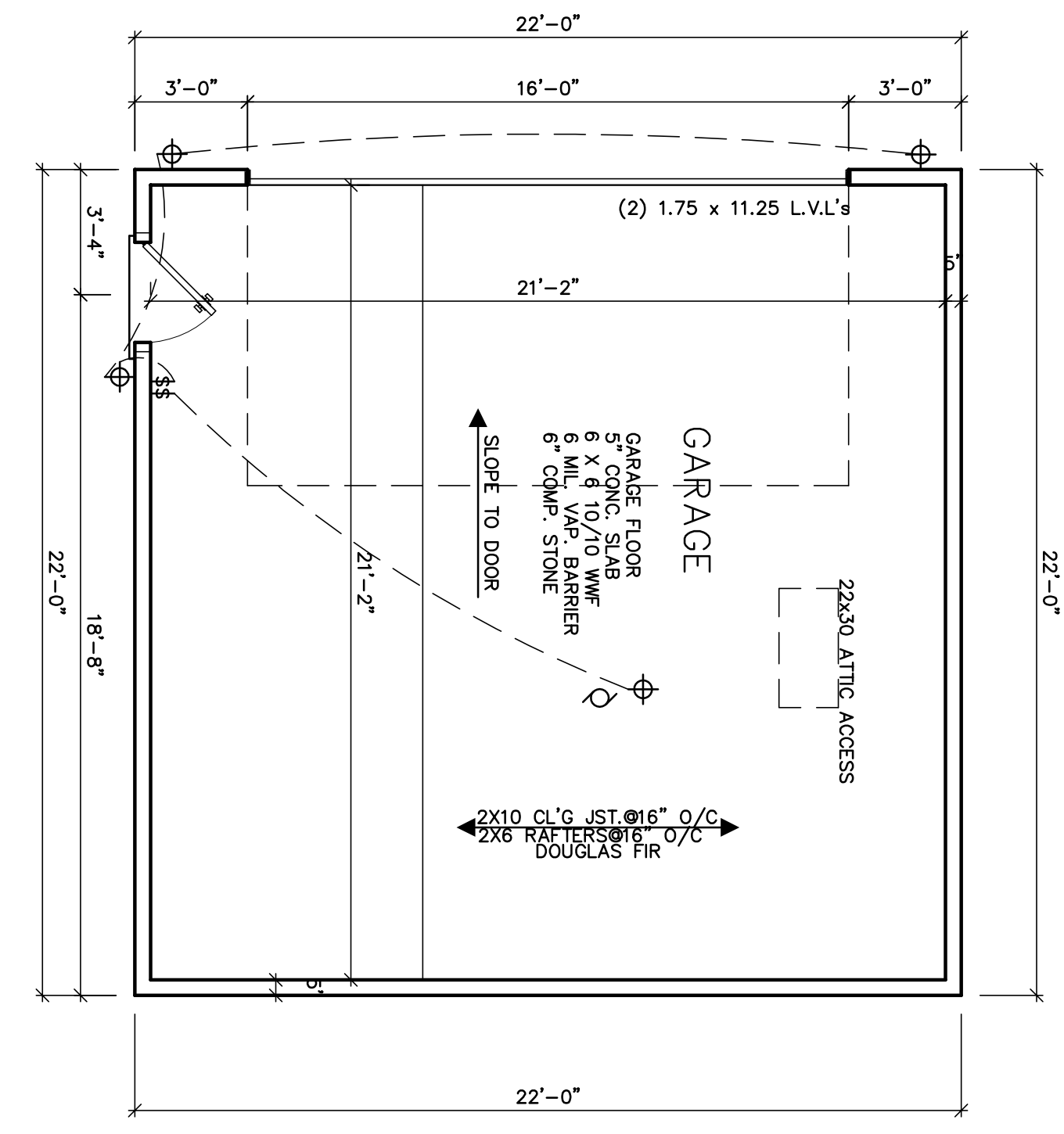
RIGHT ELEVATION
1/4" = 1'-0"



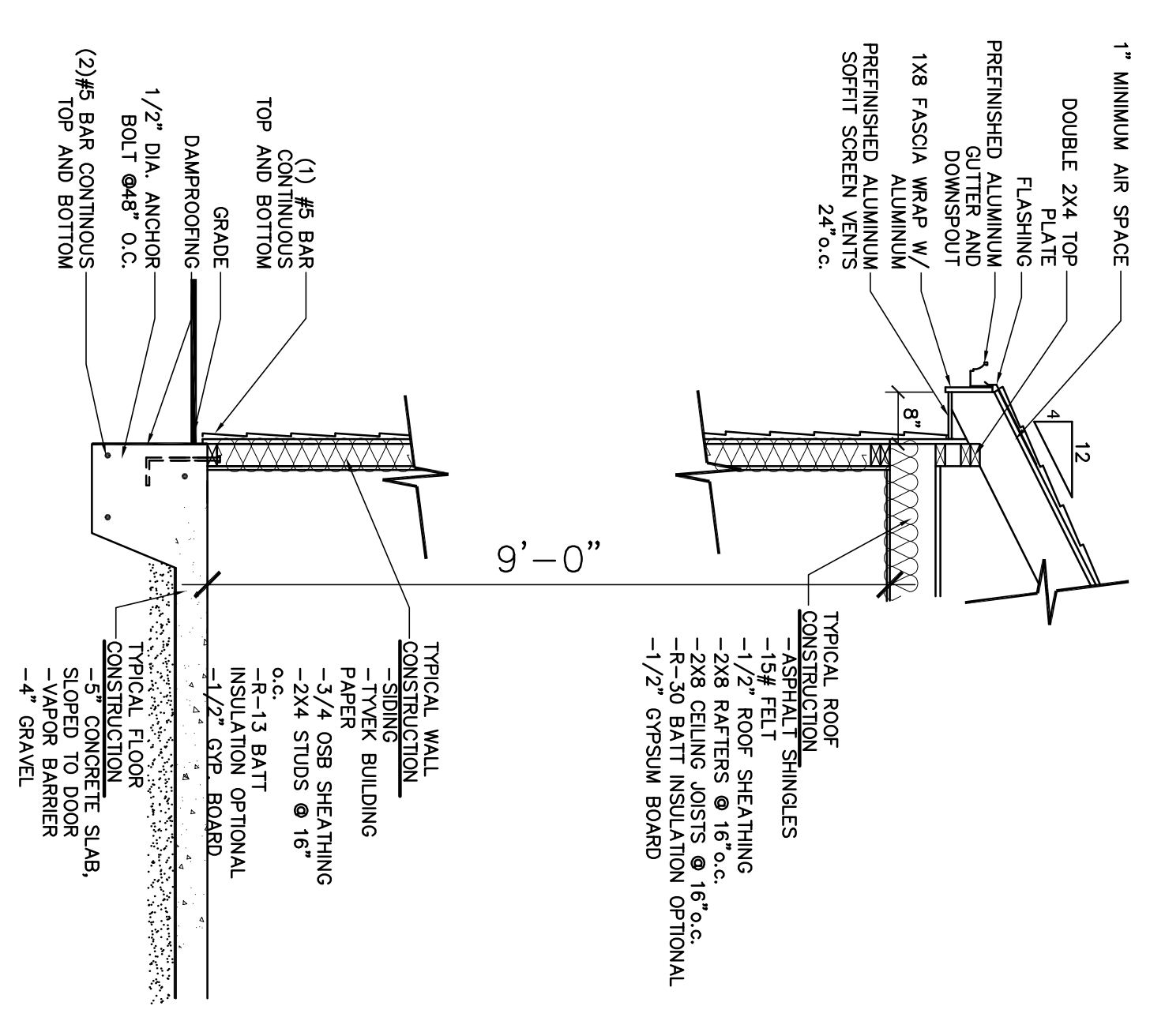
LEFT ELEVATION
1/4" = 1'-0"



FOUNDATION PLAN
1/4" = 1'-0"



FLOOR PLAN
1/4" = 1'-0"



Two Story Residence
for
9869 W 144th PL.
Orland Park, IL.

NO.	DATE	DESCRIPTION

