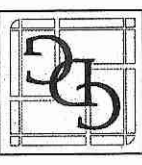


NO.	REVISIONS	DATE	BY
1	ISSUED FOR CLIENT REV.	01-12-10	RT
2	ISSUED TO ZONING	01-26-10	RT
3	ISSUED FOR PLAN REVIEW	02-17-10	RT
4	REV. PER 3/22 STAFF MTG.	03-26-10	RT
5	RE-ISSUE PLAN REVIEW	04-01-10	RT
6	REV. PER PC MEETING	04-13-10	RT
7	ISSUED TO VILLAGE BOARD	04-27-10	RT

CORPORATE
DESIGN + DEVELOPMENT
GROUP, LLC
1550 W. 111th St.
Suite 200
Chicago, IL 60643
www.cdd.com
773.232.8800



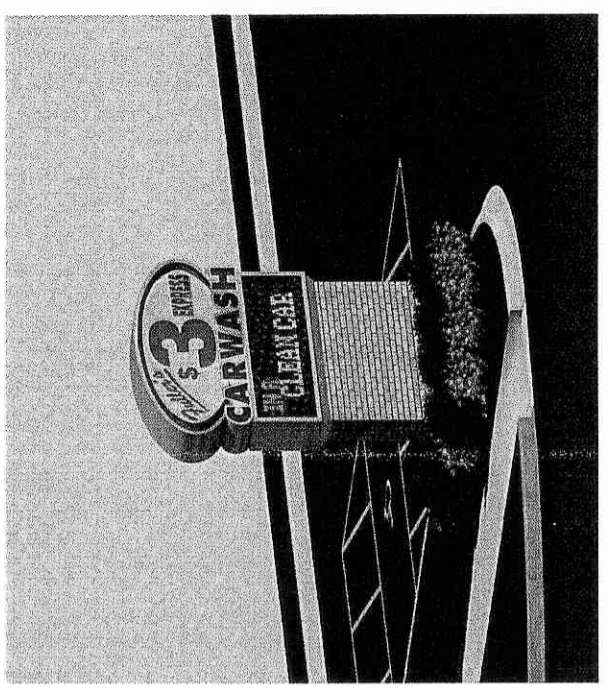
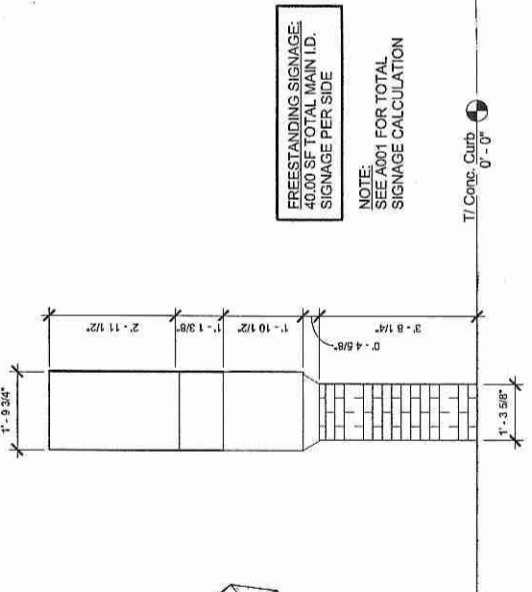
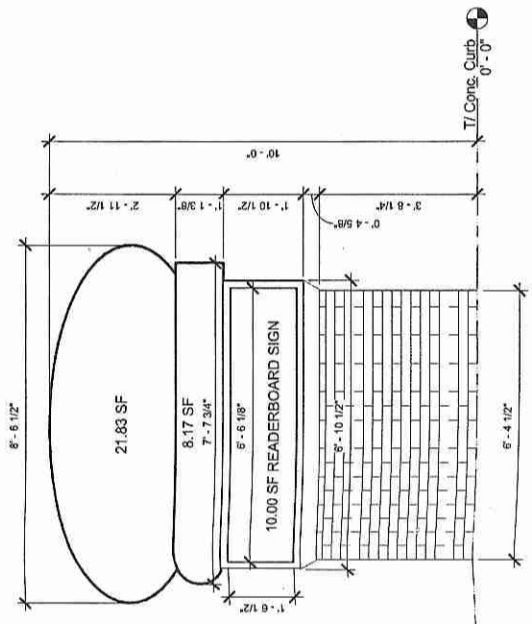
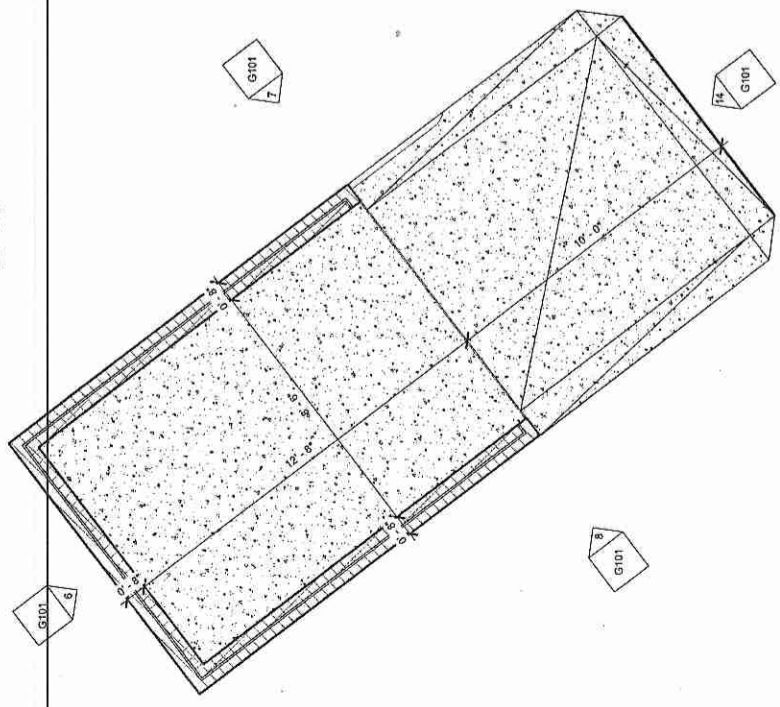
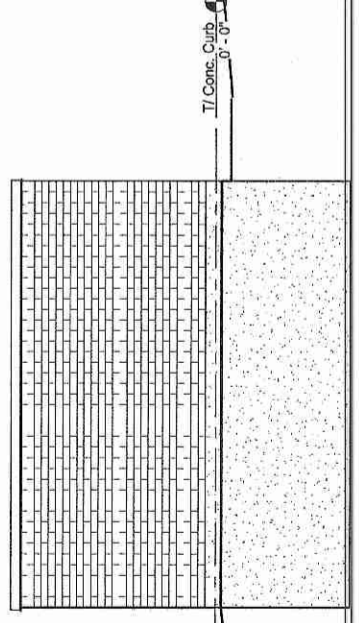
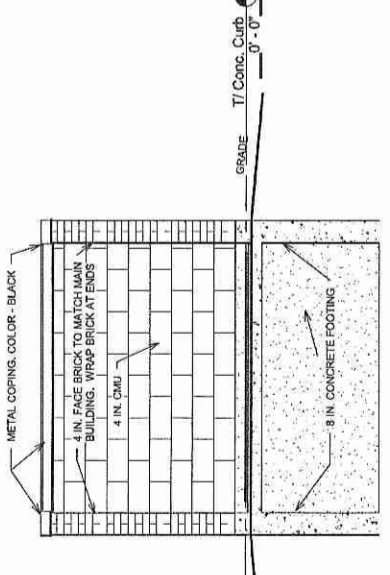
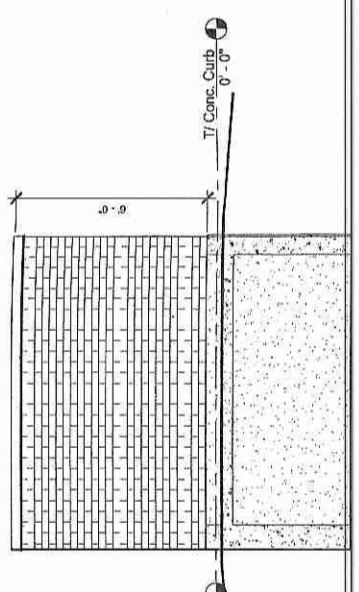
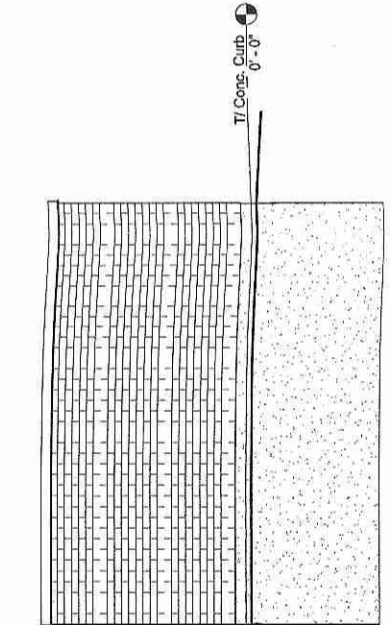
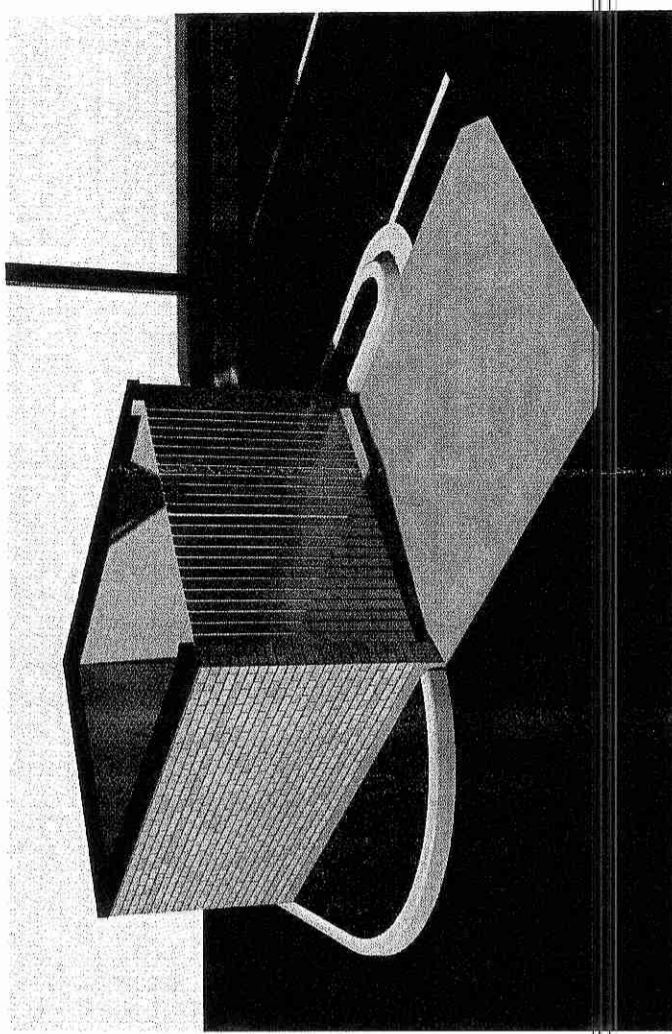
ORLAND PARK, ILLINOIS
156th St. & S. Harlem Ave.
Car Wash Renovation & Site Improvements

FULLER
CAR WASH

Signage & Trash
Enclosure

DATE: 12-16-09
SCALE: As Indicated
DRAWN: Author
CHECKED: Checker
JOB: D09059
SHEET: G101

BOARD APPROVED
CASE NO. 2010-0099
DATE 5/3/10
W/CONDITIONS
W/O CONDITIONS



FREESTANDING SIGNAGE:
40.00 SF TOTAL MAIN I.D.
SIGNAGE PER SIDE
NOTE:
SEE A001 FOR TOTAL
SIGNAGE CALCULATION

NOT FOR CONSTRUCTION