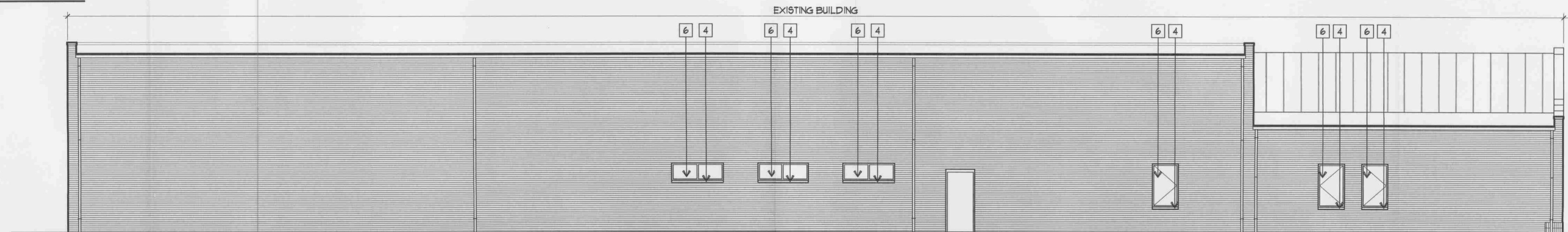


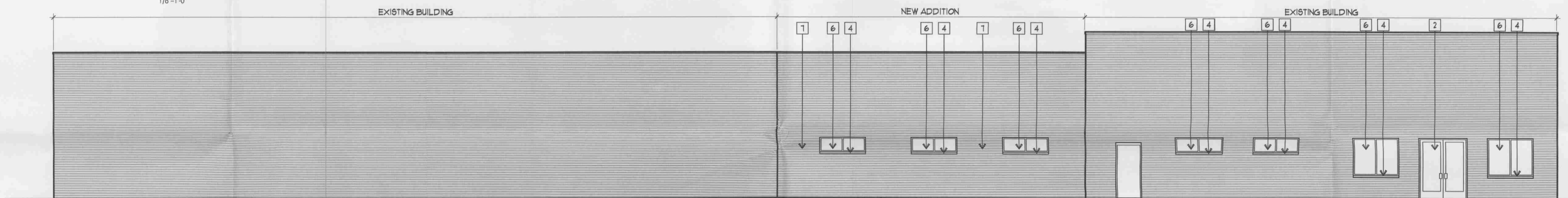
**WEST  
ELEVATION**

1/8"=1'-0"



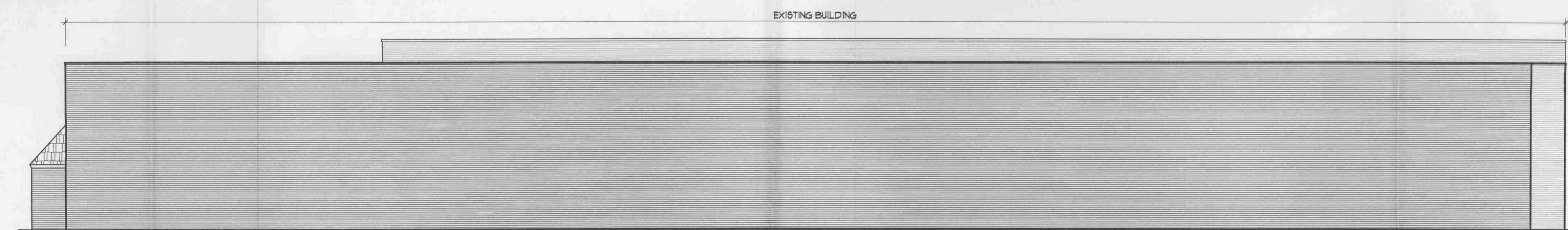
**NORTH  
ELEVATION**

1/8"=1'-0"



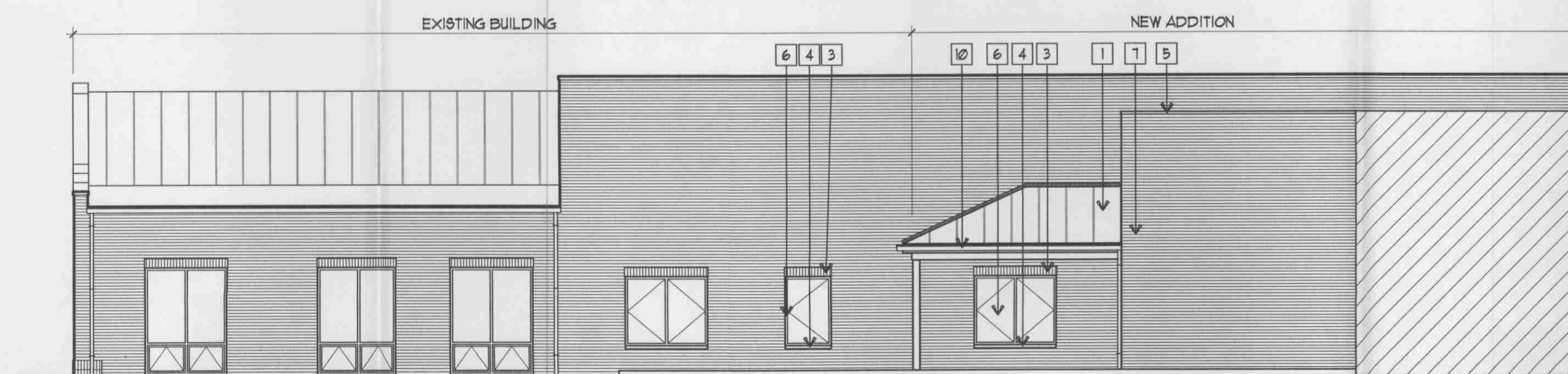
**EAST  
ELEVATION**

1/8"=1'-0"



**SOUTH  
ELEVATION**

1/8"=1'-0"



**SOUTH COURTYARD  
ELEVATION**

1/8"=1'-0"

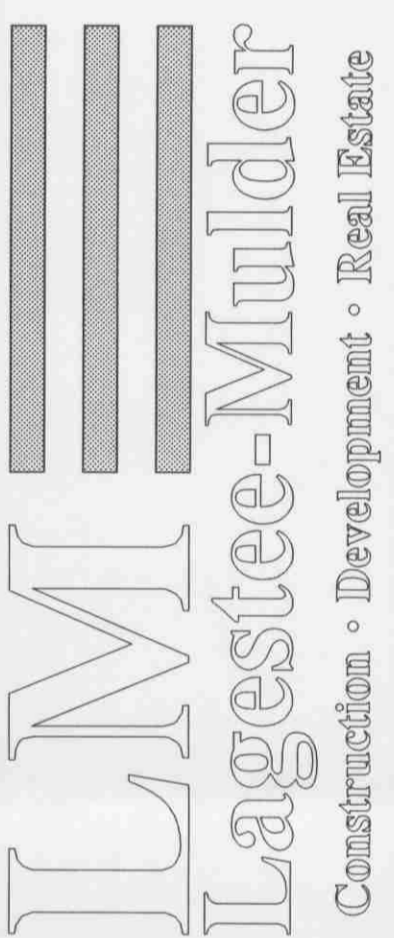
**MATERIAL KEY**

- 1 STANDING SEAM METAL ROOF
- 2 ALUMINUM STOREFRONT ENTRANCES
- 3 BRICK SOLDIER COURSE
- 4 CUT STONE SILL
- 5 CUT STONE COPING
- 6 ALUMINUM STOREFRONT
- 7 MODULAR FACE BRICK
- 8 HOLLOW METAL SERVICE DOOR AND FRAME
- 9 OVERHEAD SERVICE DOOR
- 10 ALUMINUM GUTTER AND DOWNSPOUT
- 11 RECESSED CONCRETE TRUCK DOCK



ARCHITECTURE  
LAND PLANNING  
INTERIOR ARCHITECTURE  
LANDSCAPE ARCHITECTURE  
900 RIDGE ROAD  
HOMWOOD, ILLINOIS 60430  
P: 708.799.4400 F: 708.799.4434  
WWW.LINDENGROUPINC.COM

17005 Westview Avenue  
South Holland, IL 60473  
(708) 333-8338  
(708) 333-0080 Fax  
www.lagstee-mulder.com



DRAWN DESCRIPTION  
PBC SUBMITTAL  
OR  
DATE  
9-14-07  
PROJECT NUMBER  
213-06  
FILE NUMBER  
DATE  
9-14-07  
SF  
DRAWN BY

FINAL REVIEW  
COPYRIGHT - LINDEN GROUP INC.  
ALL RIGHTS RESERVED.  
ALL DRAWINGS, SPECIFICATIONS, PLANS, CONCEPTS, AGREEMENTS  
AND NOTES ARE THE PROPERTY OF LINDEN GROUP INC. NO PART OF THE DRAWING MAY BE REPRODUCED OR  
TRANSMITTED IN ANY FORM OR BY ANY MEANS, ELECTRONIC OR MECHANICAL, WITHOUT THE EXPRESS WRITTEN  
AUTHORIZATION OF LINDEN GROUP INC.

**BUILDING ELEVATIONS**

OASIS ENTERPRISES  
SHEET NAME

**A-2**  
SHEET OF