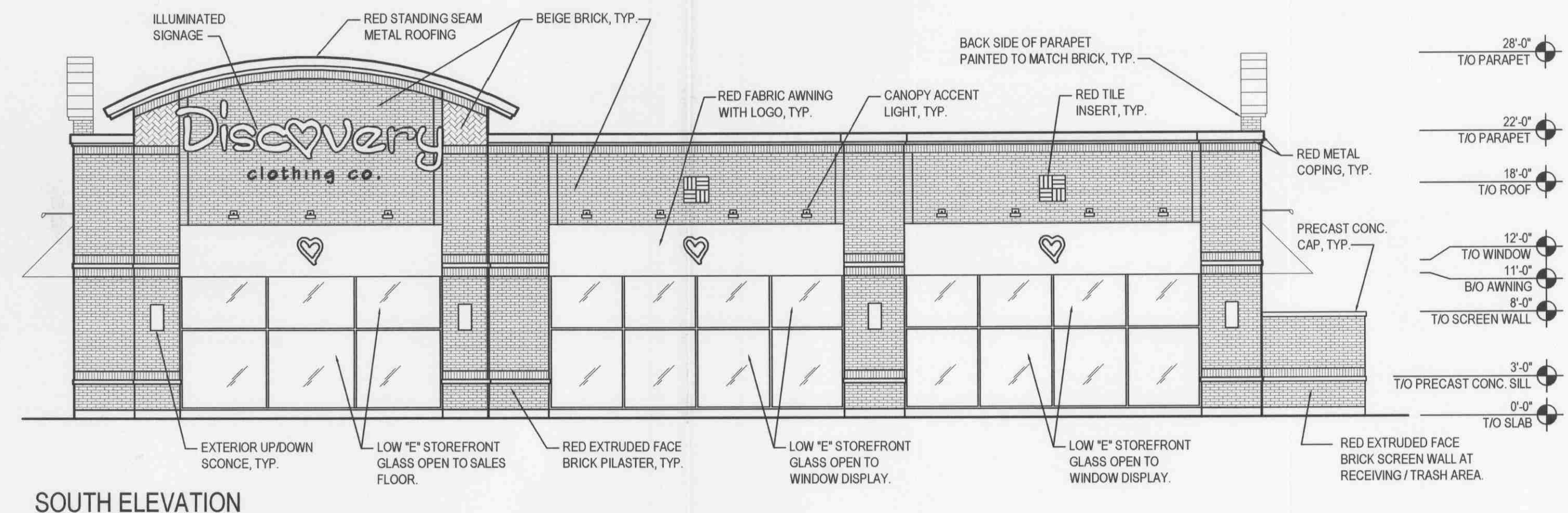
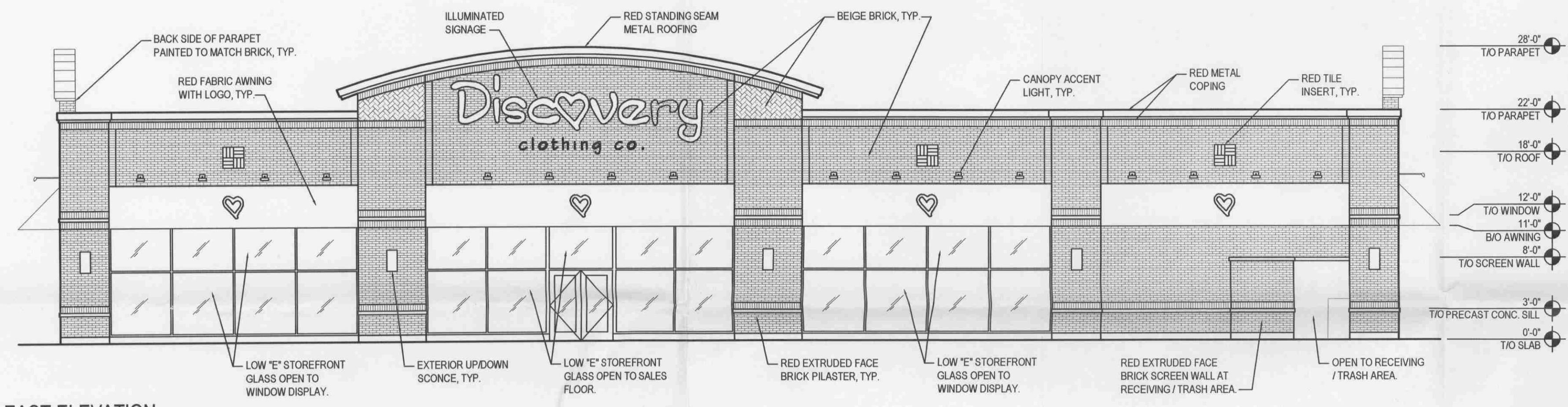


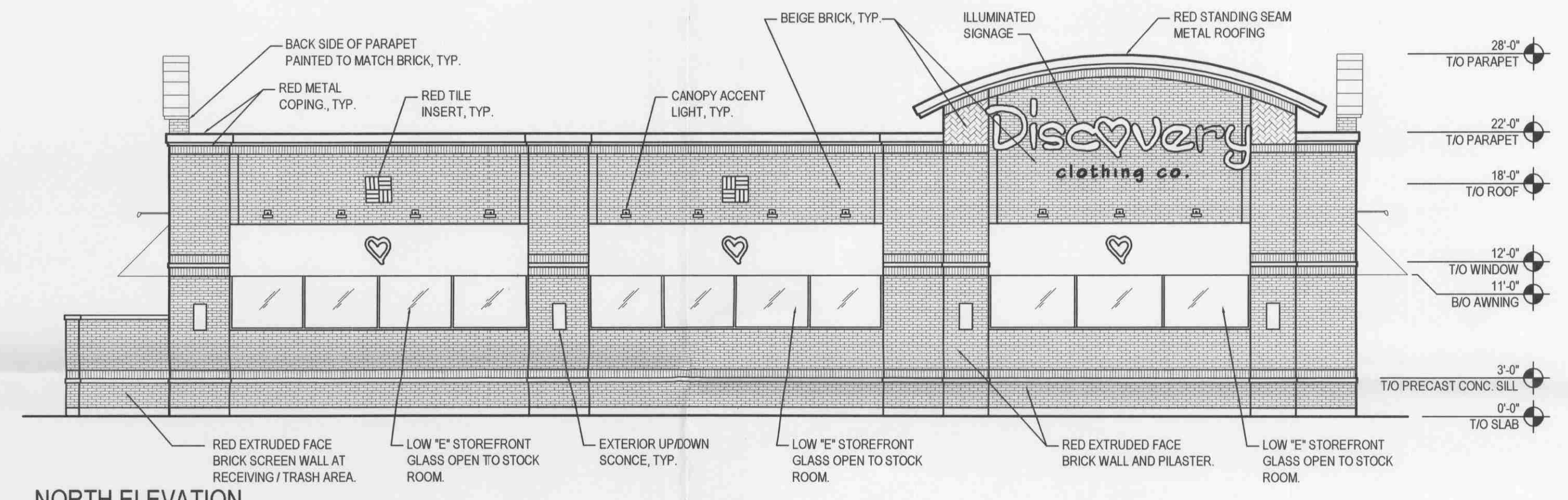
WEST ELEVATION



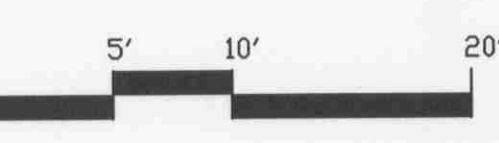
SOUTH ELEVATION



EAST ELEVATION



NORTH ELEVATION



ELEVATION DATA			
SIGNAGE (7.5% x FACADE OVERALL SQUARE FOOTAGE)			
ELEVATION	ALLOWED / REQUIRED	PROVIDED	
NORTH:	075 x 2166.9 S.F. = 162,517.5 S.F.	135 S.F. (1 SIGNAGE) + 27 S.F. (3 LOGOS) = 162 S.F.	
SOUTH:	075 x 2166.9 S.F. = 162,517.5 S.F.	135 S.F. (1 SIGNAGE) + 27 S.F. (3 LOGOS) = 162 S.F.	
EAST:	075 x 3016.5 S.F. = 226,237.5 S.F.	185 S.F. (1 SIGNAGE) + 36 S.F. (4 LOGOS) = 221 S.F.	
WEST:	075 x 3016.5 S.F. = 226,237.5 S.F.	185 S.F. (1 SIGNAGE) + 36 S.F. (4 LOGOS) = 221 S.F.	
FACADES GREATER THAN 100 FEET RECESSES & PROJECTIONS, MIN. 20% OF LENGTH OF FACADE WINDOWS & AWNINGS, MIN. 60% OF LENGTH OF FACADE			
ELEVATION	ALLOWED / REQUIRED	PROVIDED	
NORTH:	92 L.F. = N/A	N/A	
SOUTH:	92 L.F. = N/A	N/A	
EAST:	20 x 127.5 L.F. = 25.5 L.F.	32.2 L.F.	
WEST:	20 x 127.5 L.F. = 25.5 L.F.	32.2 L.F.	
FACADE TRANSPARENCY FOR COMMERCIAL USES UP TO 80,000 S.F., MIN. 30% OF FACADES			
ELEVATION	WALL S.F.	GLASS S.F. REQUIRED	GLASS S.F. PROVIDED
NORTH:	2,166.9 S.F.		330.66 S.F.
SOUTH:	2,166.9 S.F.		795.96 S.F.
EAST:	3,016.5 S.F.		923.50 S.F.
WEST:	3,016.5 S.F.		1,208.00 S.F.
TOTAL S.F.	10,366.8 S.F. x 30 =	3,110.04 S.F.	3,258.12 S.F.

BOARD APPROVED
 CASE NO. 2007-05235-4
 DATE 11-5-07
 W/CONDITIONS
 W/O CONDITIONS



DISCOVERY CLOTHING
 LOWES OF ORLAND PARK-LOT 2
 EXTERIOR ELEVATIONS
 October 26, 2007

CHIPMAN ADAMS ARCHITECTS
 1550 N. NORTHWEST HIGHWAY
 SUITE 400
 PARK RIDGE, IL 60068-1463
 T 847.298.6900
 F 847.298.6966