

FLOOR PLAN
 Scale: N.T.S.
 New Pick-Up Concept v1.0



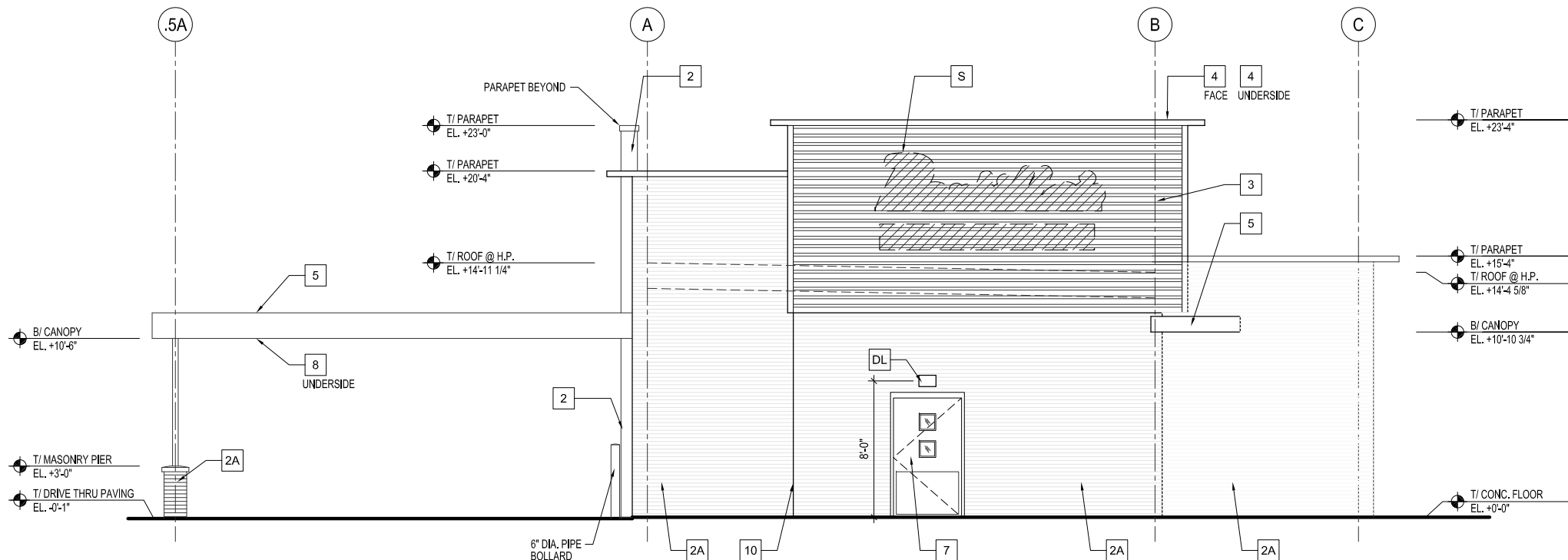
FEBRUARY 5th, 2024

Copyright 2023 - Jensen & Jensen Architects, P.C.

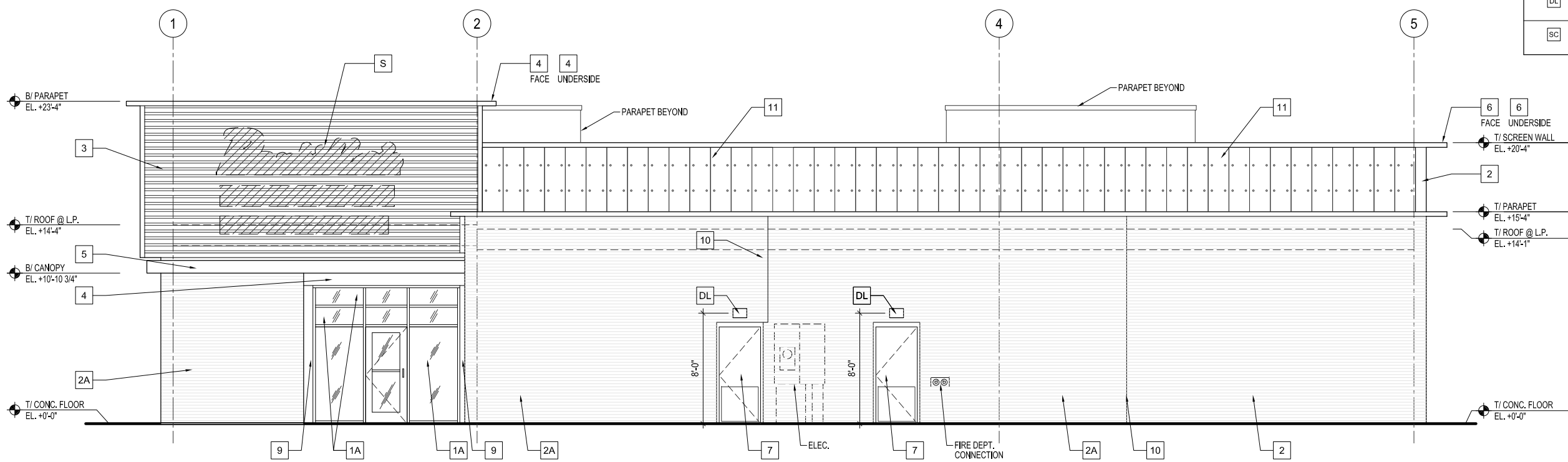


Portillo's - Pick-Up Restaurant
 20 ORLAND SQUARE DRIVE, ORLAND PARK, IL





SIDE - SOUTH ELEVATION
Scale: N.T.S.



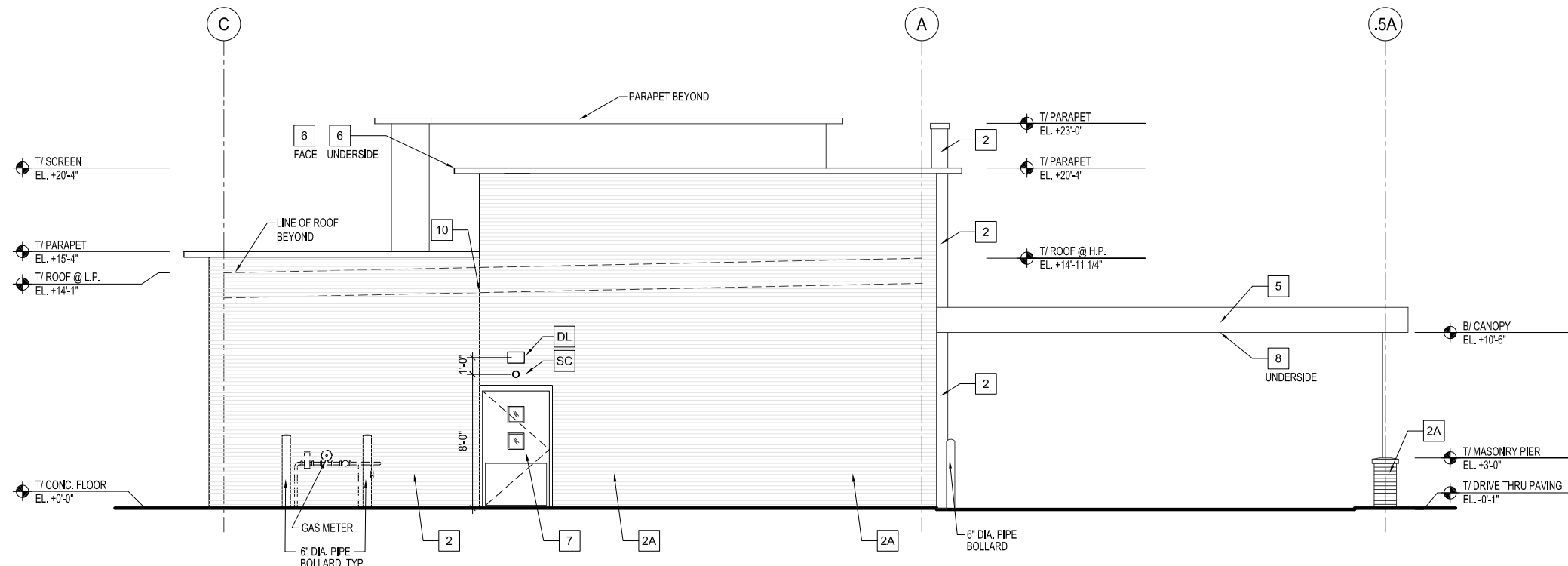
FRONT - EAST ELEVATION
Scale: N.T.S.

| MATERIAL SCHEDULE | | |
|-------------------|------------------------|------------------------------------------------------------------------------------------------------------------------------------------------------------------------------------------------------------------------------|
| KEY NOTE | MATERIAL | MATERIAL SPECIFICATION |
| 1A | ALUMINUM STOREFRONT | 2"W x 4-1/2"D THERMALLY BROKEN PRE-FIN. ALUM. STOREFRONT W/ 1" INSULATED GLASS CENTER SET. OLD CASTLE SERIES 3000 OUTSIDE GLAZED OR EQUAL. COLORS: GLASS, "SOLAR GRAY" SOLARBAN 60 (TEMPERED AS REQUIRED), ALUM. CLEAR ANOD. |
| 1B | ALUMINUM STOREFRONT | 2"W x 4-1/2"D THERMALLY BROKEN PRE-FIN. ALUM. STOREFRONT W/ 1" INSULATED GLASS CENTER SET. OLD CASTLE SERIES 3000 OUTSIDE GLAZED OR EQUAL. COLORS: GLASS, CLEAR (TEMPERED AS REQUIRED), ALUM. CLEAR ANOD. |
| 2 | BRICK VENEER | BRICK VENEER RUNNING BOND. MANUFACTURER: GLEN-GERY. COLOR: CARDINAL RED GLAZED. |
| 2A | BRICK VENEER | BRICK VENEER RUNNING BOND. MANUFACTURER: GLEN-GERY. COLOR: "BLACK" |
| 3 | RIBBED METAL PANEL | HWP PANELS METAL ERA. COLOR: BONE WHITE. |
| 4 | BRAKE METAL/FASCIA | PREFINISHED METAL SOFFIT BOX/FASCIA METAL ERA OR EQUAL. COLOR: MATTE BLACK. |
| 5 | BRAKE METAL/FASCIA | PREFINISHED METAL SOFFIT BOX/FASCIA METAL ERA OR EQUAL. CITADEL COLOR: SLATE GRAY. |
| 6 | BRAKE METAL/FASCIA | PREFINISHED SOFFIT PANELS 850 SOFFIT PANELS, ALUM. WITH TRIM, METAL ERA OR EQUAL. CITADEL COLOR: REGAL RED. |
| 7 | PAINT | PAINT DOOR AND FRAME. PAINT: SWR6258 TRICORN BLACK. |
| 8 | PAINT DECK | PAINT CEILING OF EXPOSED METAL SURFACES. PAINT: SWR6868 REAL RED. |
| 9 | BREAK METAL | COLOR: TO MATCH CLEAR ANODIZED ALUMINUM. |
| 10 | CONTROL JOINT | VENEER CONTROL JOINT. COLOR TO MATCH ADJACENT BRICK VENEER COLOR. |
| 11 | FIBER CEMENT BOARD | NCHHA ARCHITECTURAL WALL PANEL; CONCRETE TEXTURED DIMPLE CONCRETE WALL PANEL "EMPIRE BLOCK" |
| WS | WALL SCENCE LIGHT | UP AND DOWN WALL SCENCE LIGHT, WEATHERED PATINA FINISH. |
| S | SIGNAGE | EXTERIOR SIGNAGE, REFER TO SIGNAGE DRAWINGS. |
| DL | WALL MOUNTED DOWNLIGHT | WALL MOUNTED ARM DOWNLIGHT. REFER TO ELECTRICAL DRAWINGS. |
| SC | SECURITY CAMERA | WALL MOUNTED SECURITY CAMERA. SEE ELECT. DRAWINGS. |

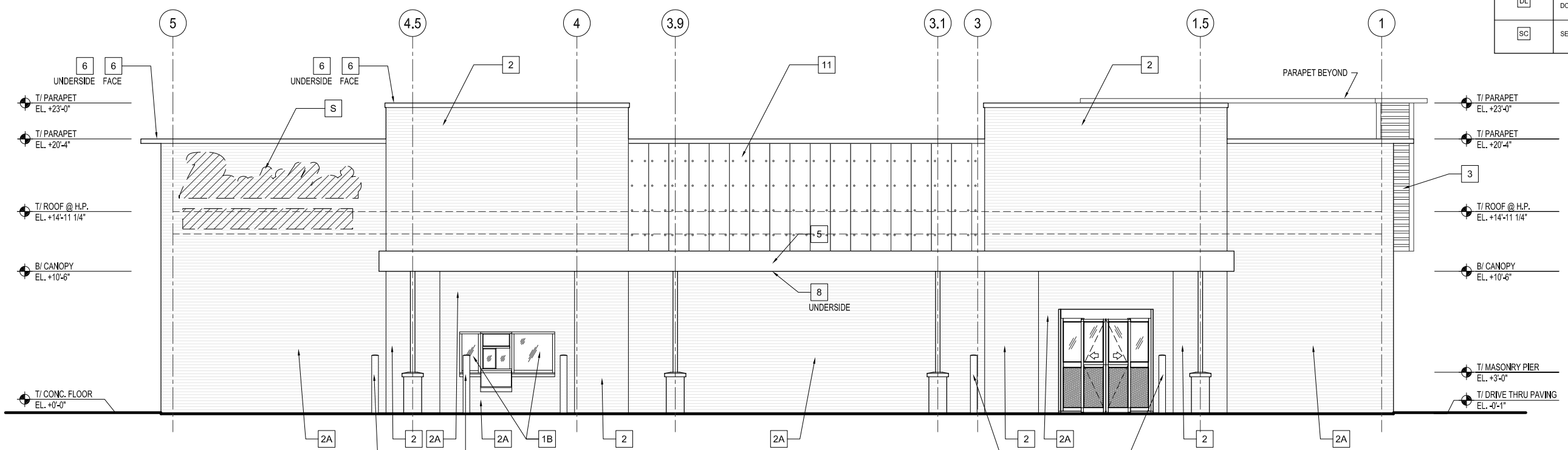


Portillo's - Pick-Up Restaurant
20 ORLAND SQUARE DRIVE, ORLAND PARK, IL





REAR - NORTH ELEVATION
Scale: N.T.S.



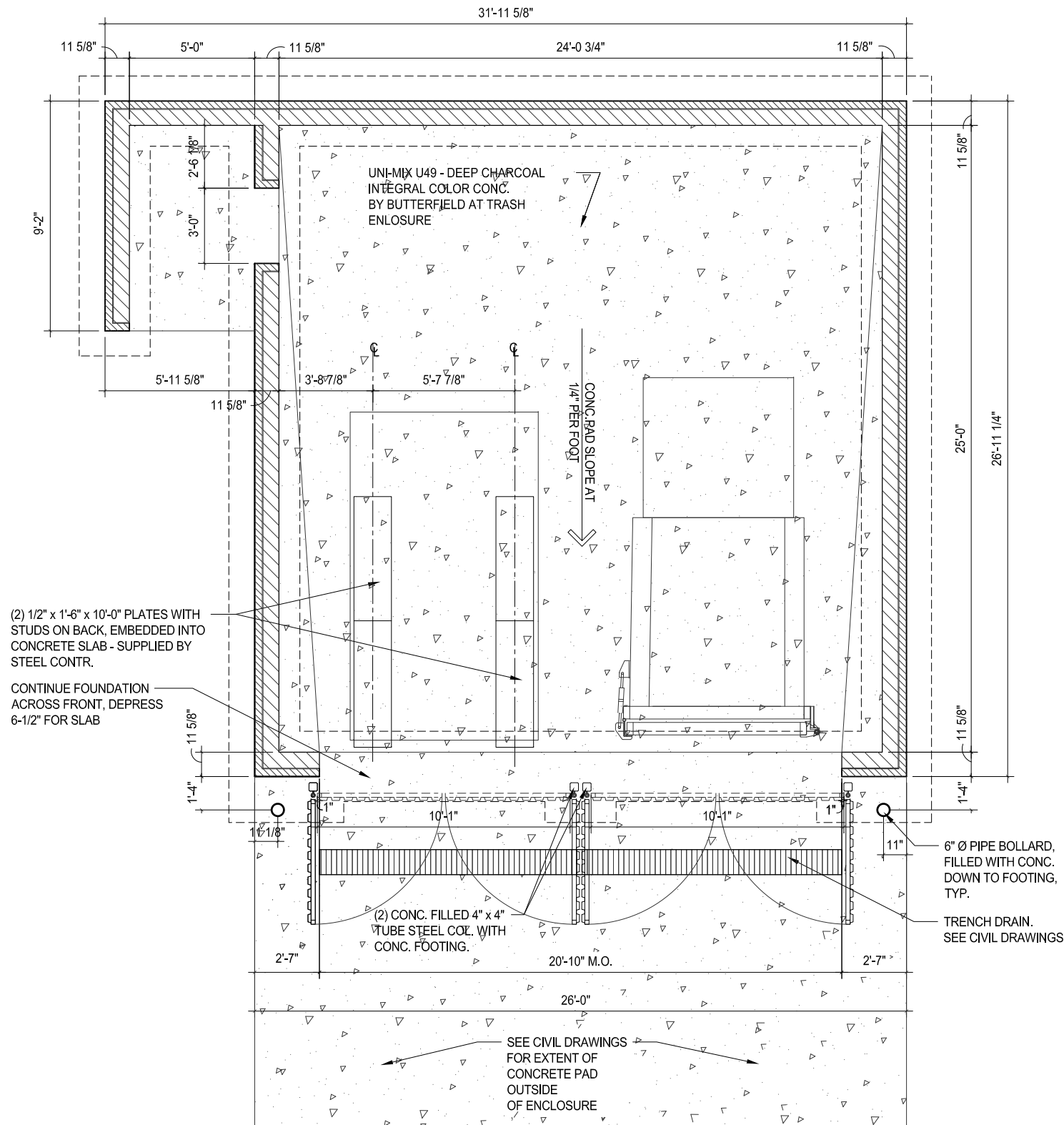
DRIVE-THRU - WEST ELEVATION
Scale: N.T.S.

| MATERIAL SCHEDULE | | |
|-------------------|------------------------|------------------------------------------------------------------------------------------------------------------------------------------------------------------------------------------------------------------------------|
| KEY NOTE | MATERIAL | MATERIAL SPECIFICATION |
| 1A | ALUMINUM STOREFRONT | 2"W x 4-1/2"D THERMALLY BROKEN PRE-FIN. ALUM. STOREFRONT W/ 1" INSULATED GLASS CENTER SET. OLD CASTLE SERIES 3000 OUTSIDE GLAZED OR EQUAL. COLORS: GLASS, "SOLAR GRAY" SOLARBAN 60 (TEMPERED AS REQUIRED), ALUM. CLEAR ANOD. |
| 1B | ALUMINUM STOREFRONT | 2"W x 4-1/2"D THERMALLY BROKEN PRE-FIN. ALUM. STOREFRONT W/ 1" INSULATED GLASS CENTER SET. OLD CASTLE SERIES 3000 OUTSIDE GLAZED OR EQUAL. COLORS: GLASS, CLEAR (TEMPERED AS REQUIRED), ALUM. CLEAR ANOD. |
| 2 | BRICK VENEER | BRICK VENEER RUNNING BOND. MANUFACTURER: GLEN-GERY. COLOR: CARDINAL RED GLAZED. |
| 2A | BRICK VENEER | BRICK VENEER RUNNING BOND. MANUFACTURER: GLEN-GERY. COLOR: "BLACK" |
| 3 | RIBBED METAL PANEL | HWP PANELS METAL ERA. COLOR: BONE WHITE. |
| 4 | BRAKE METAL/FASCIA | PRE-FINISHED METAL SOFFIT BOX/FASCIA METAL ERA OR EQUAL. COLOR: MATTE BLACK. |
| 5 | BRAKE METAL/FASCIA | PRE-FINISHED METAL SOFFIT BOX/FASCIA METAL ERA OR EQUAL. CITADEL COLOR: SLATE GRAY. |
| 6 | BRAKE METAL/FASCIA | PRE-FINISHED SOFFIT PANELS 850 SOFFIT PANELS, ALUM. WITH TRIM, METAL ERA OR EQUAL. CITADEL COLOR: REGAL RED. |
| 7 | PAINT | PAINT DOOR AND FRAME. PAINT: SWR6258 TRICORN BLACK. |
| 8 | PAINT DECK | PAINT CEILING OF EXPOSED METAL SURFACES. PAINT: SWR6868 REAL RED. |
| 9 | BREAK METAL | COLOR: TO MATCH CLEAR ANODIZED ALUMINUM. |
| 10 | CONTROL JOINT | VENEER CONTROL JOINT. COLOR TO MATCH ADJACENT BRICK VENEER COLOR. |
| 11 | FIBER CEMENT BOARD | NCHHA ARCHITECTURAL WALL PANEL; CONCRETE TEXTURED DIMPLE CONCRETE WALL PANEL "EMPIRE BLOCK" |
| WS | WALL SCONCE LIGHT | UP AND DOWN WALL SCONCE LIGHT, WEATHERED PATINA FINISH. |
| S | SIGNAGE | EXTERIOR SIGNAGE, REFER TO SIGNAGE DRAWINGS. |
| DL | WALL MOUNTED DOWNLIGHT | WALL MOUNTED ARM DOWNLIGHT. REFER TO ELECTRICAL DRAWINGS. |
| SC | SECURITY CAMERA | WALL MOUNTED SECURITY CAMERA. SEE ELECT. DRAWINGS. |

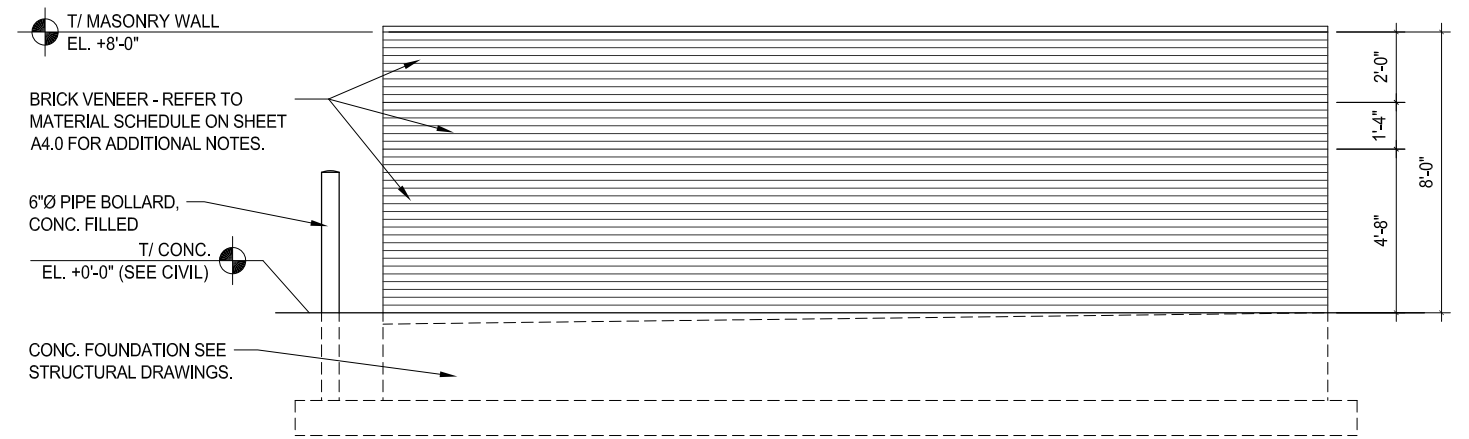


Portillo's - Pick-Up Restaurant
20 ORLAND SQUARE DRIVE, ORLAND PARK, IL

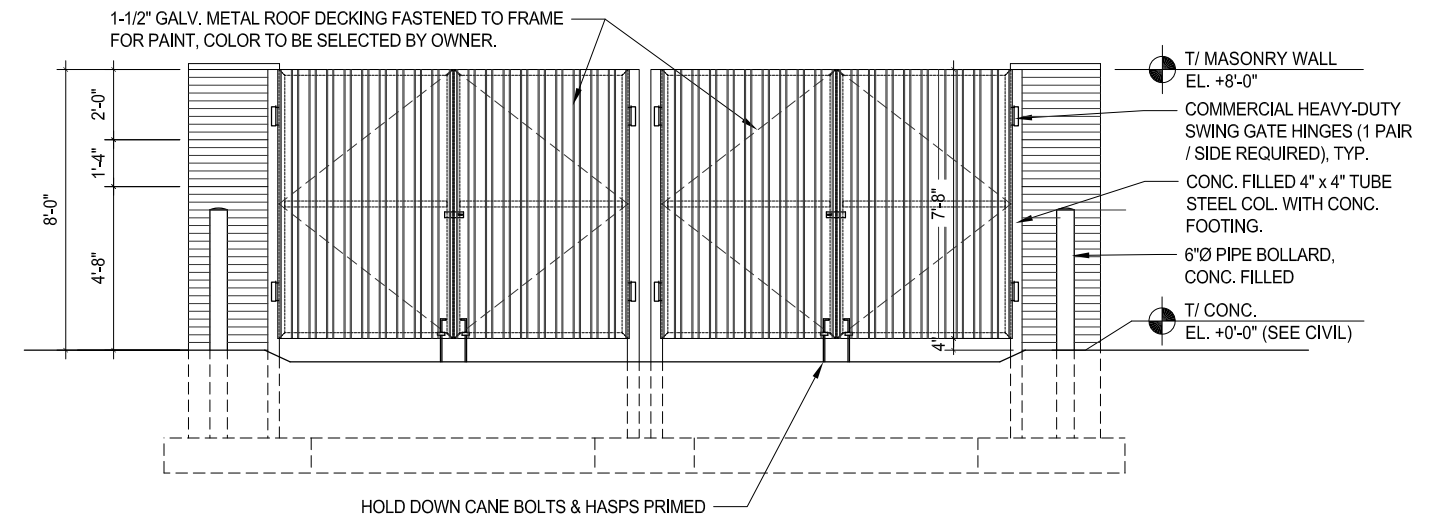




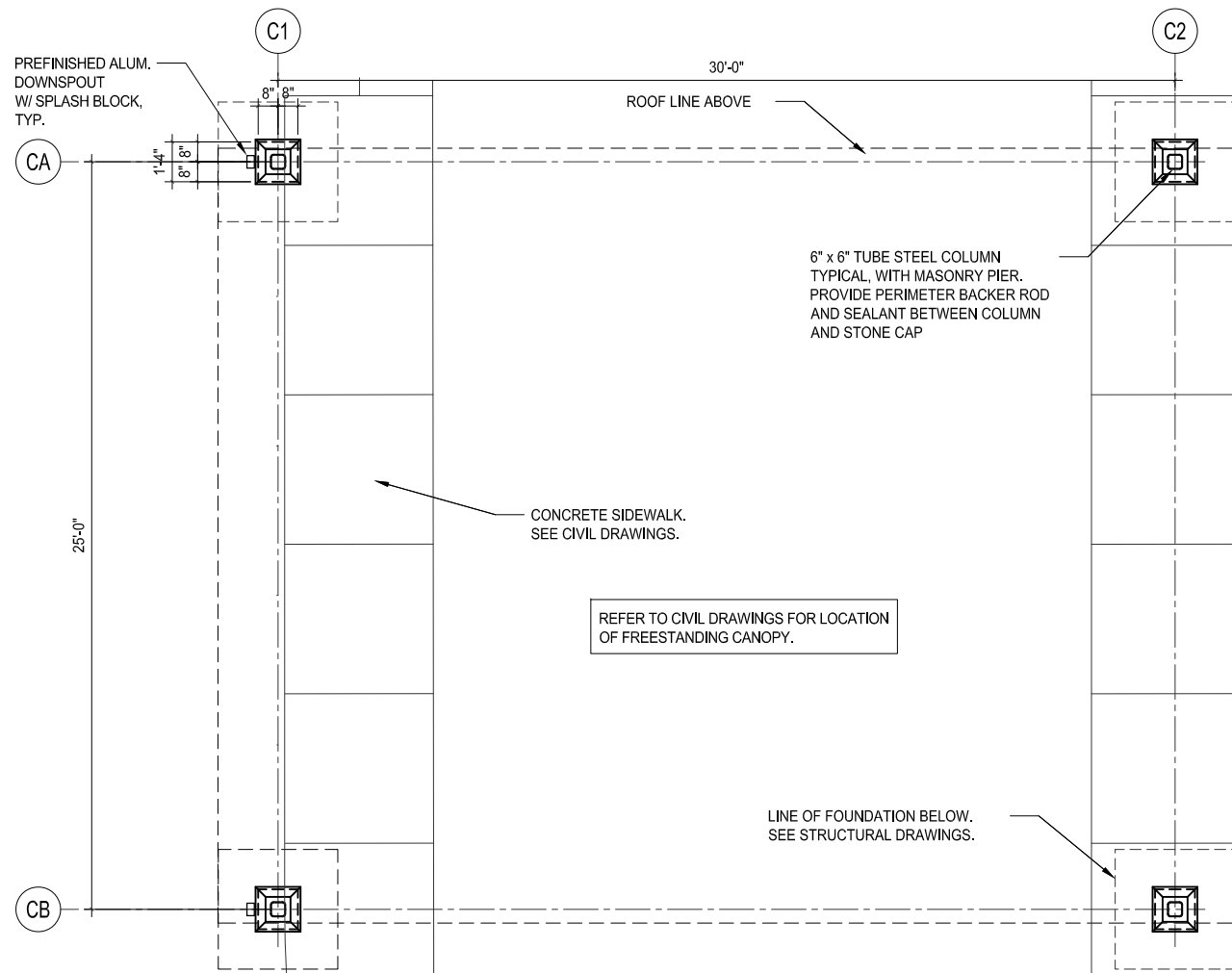
TRASH ENCLOSURE - PLAN
Scale: N.T.S.



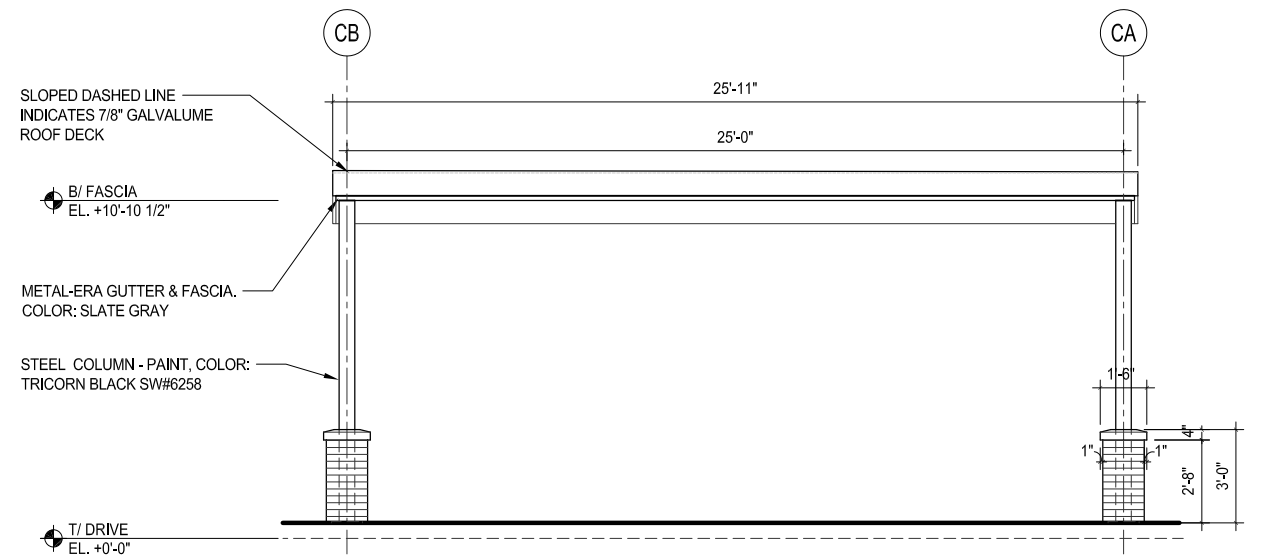
TRASH ENCLOSURE - SIDE ELEV.
Scale: N.T.S.



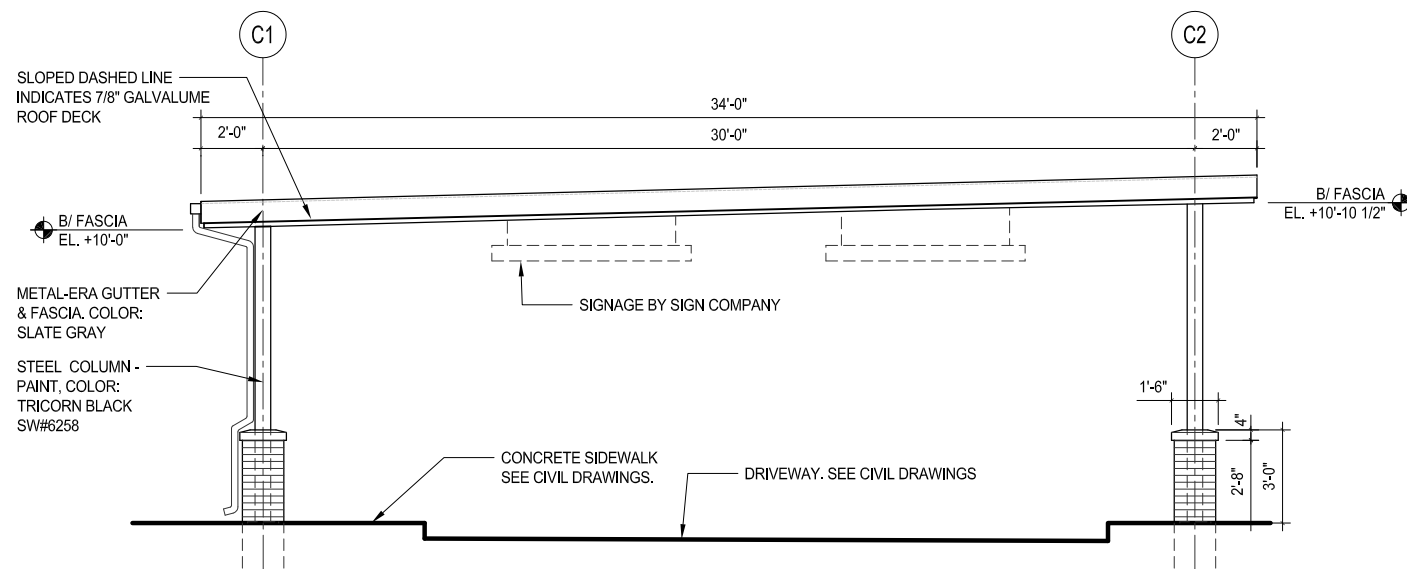
TRASH ENCLOSURE - FRONT ELEV.
Scale: N.T.S.



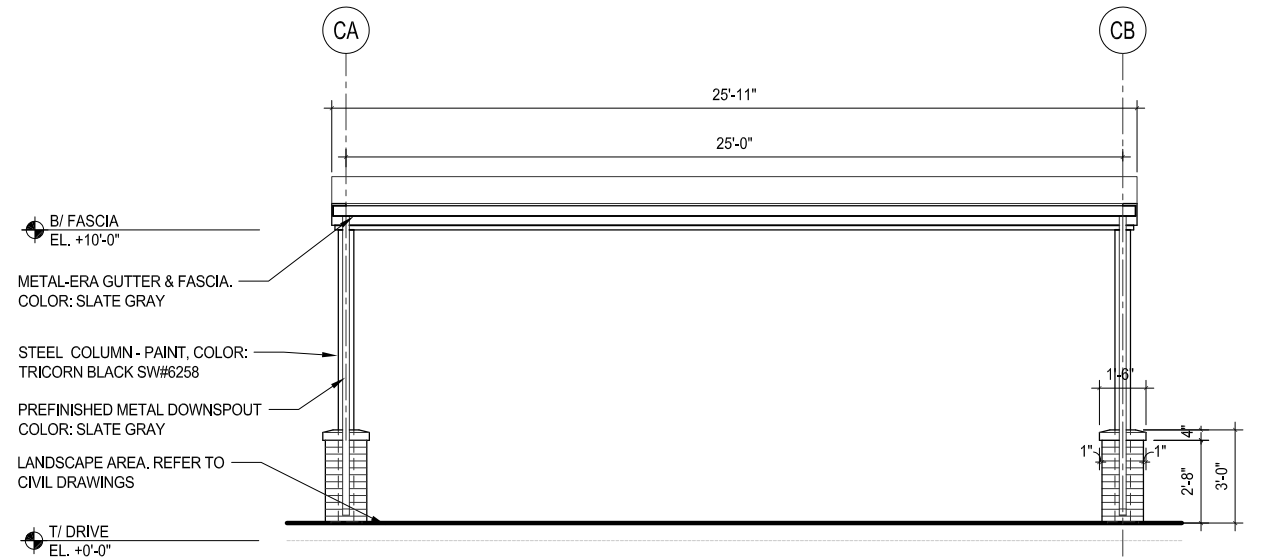
CREW CANOPY - PLAN
Scale: N.T.S.



CREW CANOPY - SOUTH ELEV.
Scale: N.T.S.



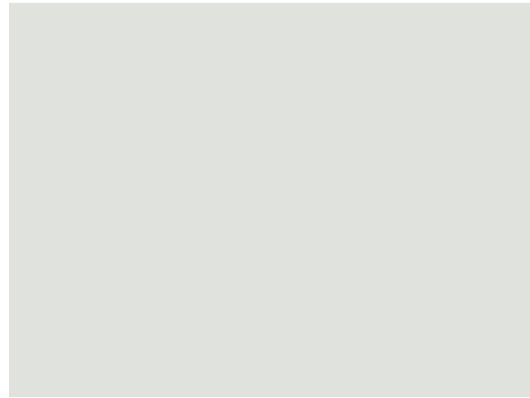
CREW CANOPY - WEST ELEV.
Scale: N.T.S.



CREW CANOPY - NORTH ELEV.
Scale: N.T.S.



MetalEra: Matte Black



MetalEra: Bone White



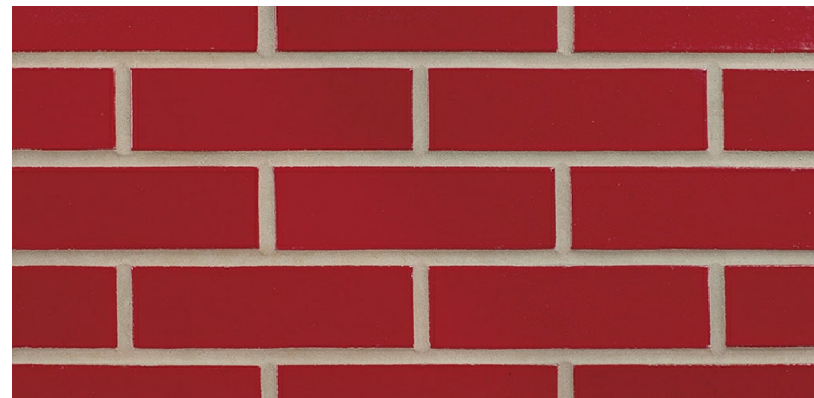
MetalEra: Cardinal (REGAL) Red



MetalEra: Slate Gray



Glen-Gery Brick: "Black"



Glen-Gery Brick: Cardinal Red Glazed or equal



Nichiha Fiber Cement Panel Empire Block

Portillo's

| MATERIAL SCHEDULE | | |
|-------------------|------------------------|--------------------------------------------------------------------------------------------------------------------------------------------------------------------------------------------------------------------------------|
| KEY NOTE | MATERIAL | MATERIAL SPECIFICATION |
| 1A | ALUMINUM STOREFRONT | 2" W x 4-1/2" D THERMALLY BROKEN PRE-FIN. ALUM. STOREFRONT W/ 1" INSULATED GLASS CENTER SET, OLD CASTLE SERIES 3000 OUTSIDE GLAZED OR EQUAL. COLORS: GLASS, "SOLAR GRAY" SOLARBAN 60 (TEMPERED AS REQUIRED), ALUM. CLEAR ANOD. |
| 1B | ALUMINUM STOREFRONT | 2" W x 4-1/2" D THERMALLY BROKEN PRE-FIN. ALUM. STOREFRONT W/ 1" INSULATED GLASS CENTER SET, OLD CASTLE SERIES 3000 OUTSIDE GLAZED OR EQUAL. COLORS: GLASS, CLEAR (TEMPERED AS REQUIRED), ALUM. CLEAR ANOD. |
| 2 | BRICK VENEER | BRICK VENEER RUNNING BOND MANUFACTURER: GLEN-GERY COLOR: CARDINAL RED GLAZED |
| 2A | BRICK VENEER | BRICK VENEER RUNNING BOND MANUFACTURER: GLEN-GERY COLOR: "BLACK" |
| 3 | RIBBED METAL PANEL | HWP PANELS METAL ERA COLOR: BONE WHITE |
| 4 | BRAKE METAL/FASCIA | PRE-FINISHED METAL SOFFIT BOX/FASCIA METAL ERA OR EQUAL. COLOR: MATTE BLACK |
| 5 | BRAKE METAL/FASCIA | PRE-FINISHED METAL SOFFIT BOX/FASCIA METAL ERA OR EQUAL. CITADEL COLOR: SLATE GRAY |
| 6 | BRAKE METAL/FASCIA | PRE-FINISHED SOFFIT PANELS 850 SOFFIT PANELS, ALUM. WITH TRIM, METAL ERA OR EQUAL. CITADEL COLOR: REGAL RED |
| 7 | PAINT | PAINT DOOR AND FRAME PAINT: SW96258 TRICORN BLACK |
| 8 | PAINT DECK | PAINT CEILING OF EXPOSED METAL SURFACES PAINT: SW96868 REAL RED |
| 9 | BREAK METAL | COLOR: TO MATCH CLEAR ANODIZED ALUMINUM |
| 10 | CONTROL JOINT | VENEER CONTROL JOINT, COLOR TO MATCH ADJACENT BRICK VENEER COLOR. |
| 11 | FIBER CEMENT BOARD | NICHIHA ARCHITECTURAL WALL PANEL: CONCRETE TEXTURED DIMPLE CONCRETE WALL PANEL 'EMPIRE BLOCK' |
| WS | WALL SCONCE LIGHT | UP AND DOWN WALL SCONCE LIGHT, WEATHERED PATINA FINISH |
| S | SIGNAGE | EXTERIOR SIGNAGE, REFER TO SIGNAGE DRAWINGS |
| DL | WALL MOUNTED DOWNLIGHT | WALL MOUNTED ARM DOWNLIGHT REFER TO ELECTRICAL DRAWINGS |
| SC | SECURITY CAMERA | WALL MOUNTED SECURITY CAMERA, SEE ELECT. DRAWINGS |



Portillo's Orland Park, IL - Exterior Material & Color Palette Board

Orland Park, IL - Building Streetview 3D Color Rendering for Reference



Orland Park, IL - Monument Sign Color Rendering for Reference



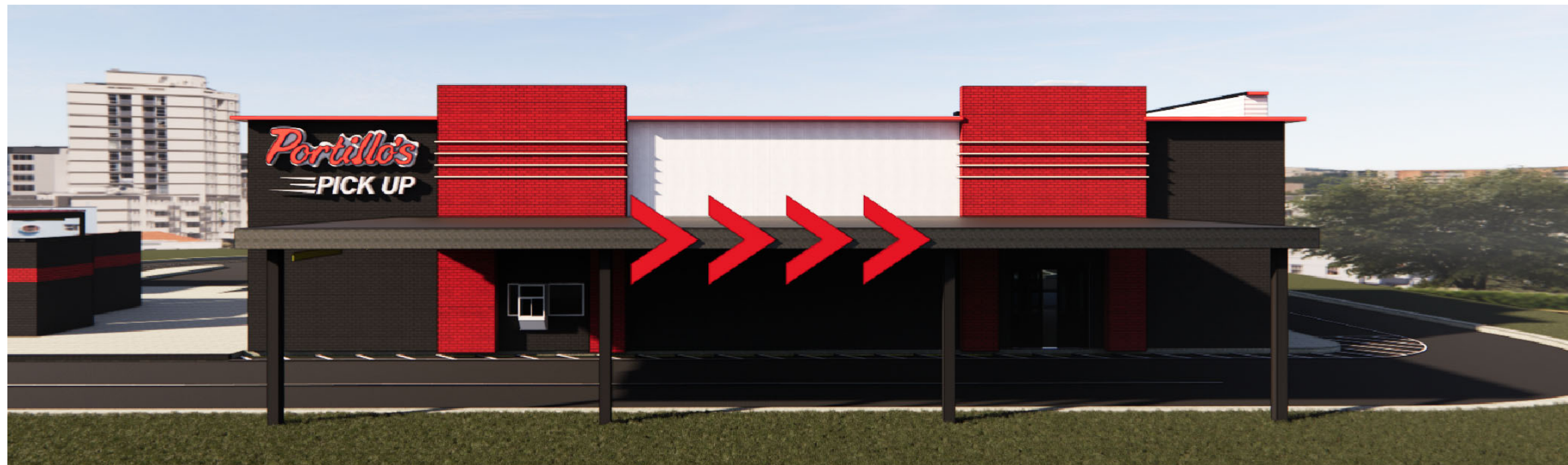
Portillo's Orland Park, IL - Entry Corner Rendering



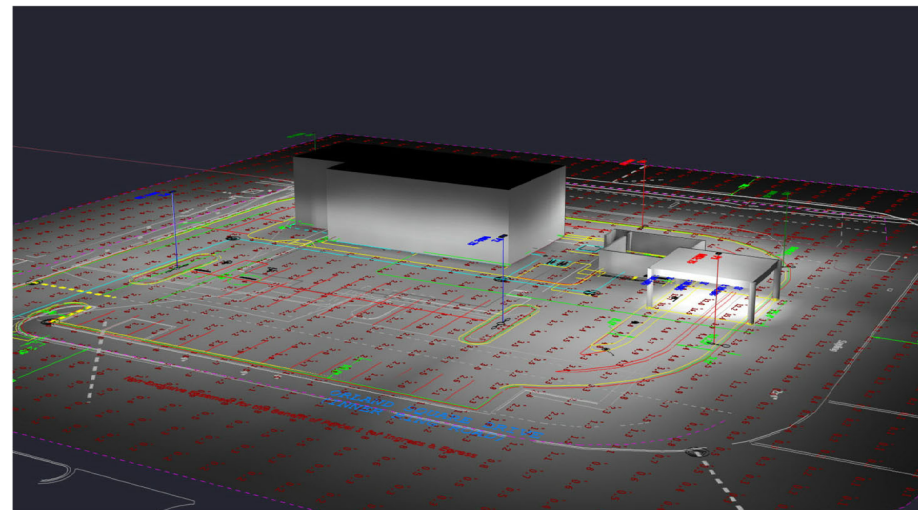
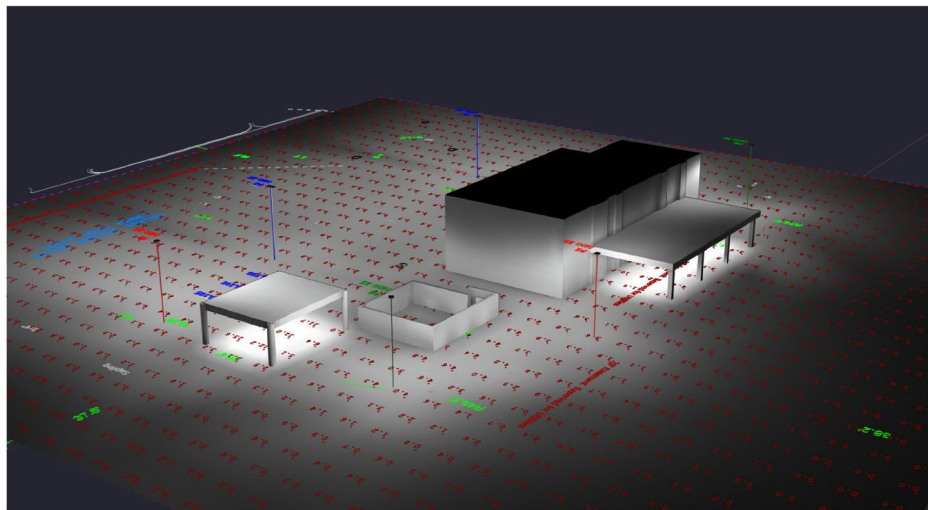
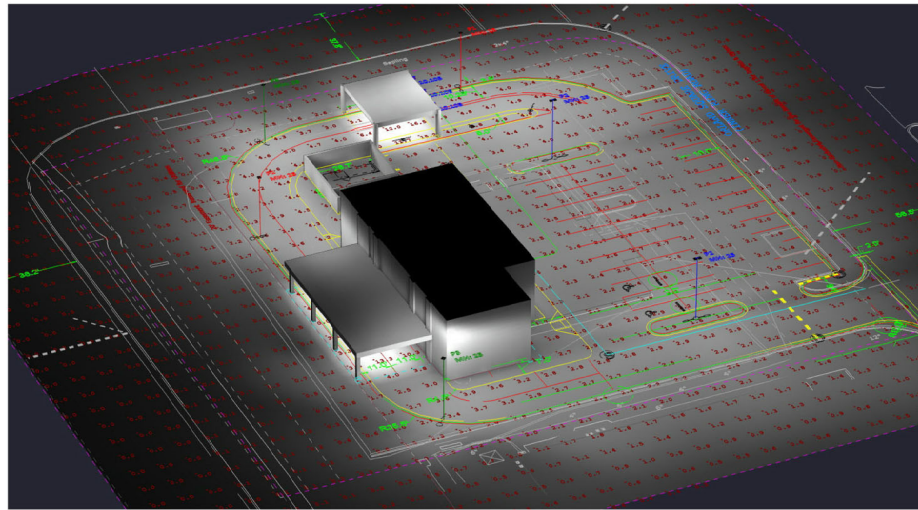
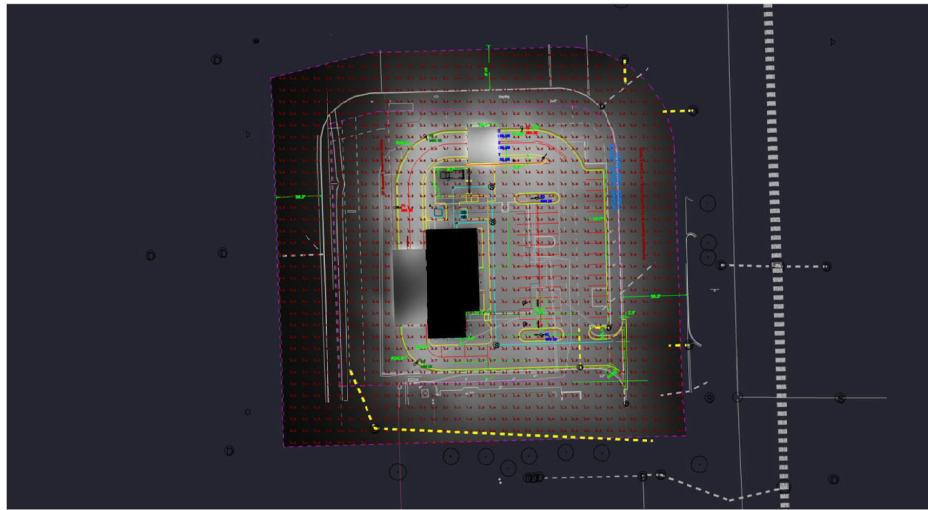
Portillo's Orland Park, IL - Rear Corner Rendering



Portillo's Orland Park, IL - Front Elevation Rendering



Portillo's Orland Park, IL - Drive-Thru Elevation Rendering



| Symbol | Qty | LLF | Description | Type |
|--------|-----|-------|----------------------------|-------|
| ⊕ | 18 | 1.000 | LDN4 40_10 LO4AR LSS | J-EXT |
| ⊕ | 2 | 1.000 | DSX1 LED P6 40K 80CRI T2M | P1 |
| ⊕ | 2 | 1.000 | DSX1 LED P6 40K 80CRI T5W | P2 |
| ⊕ | 2 | 1.000 | DSX1 LED P6 40K 80CRI TFTM | P3 |

**This document contains confidential and proprietary information of KSA Lighting & Controls. This document may only be used by or for the benefit of KSA Lighting & Controls representatives and customers. This lighting layout is not a professional engineering drawing and is provided for informational purposes only, without warranty as to accuracy, completeness, reliability or otherwise. KSA Lighting & Controls is not responsible for specifying the light fixtures or illumination requirements for any specific project, nor is it responsible for meeting municipal or building code requirements. It is the obligation of the end-user to consult with a professional engineering advisor to determine whether this lighting layout meets the applicable project requirements for lighting system performance, safety, suitability and effectiveness for use in a particular application. Field verification is recommended when calculations are based on end-user or customer-provided information. End-user environment and application (including, but not limited to, voltage variation and dirt accumulation) can cause actual field performance to differ from the calculated photometric performance represented in this lighting layout. In no event will KSA Lighting & Controls be responsible for any loss resulting from any use of this drawing.

| Label | CalcType | Units | Avg | Max | Min | Avg/Min | Max/Min |
|------------------|-------------|-------|------|------|-----|---------|---------|
| Object_12_Planar | Illuminance | Fc | 1.40 | 16.5 | 0.0 | N.A. | N.A. |

- Notes :
1. Calculation Work Plane : Ground Level
 2. Fixture Mounting Height : 25'
 3. Calculation Point Spacing : 10' x10'

| |
|---------------------------|
| Drawn By: Scott Shellberg |
| Date: 2/7/2024 |
| Notes: |



Portillo's - Pick-Up Restaurant

20 ORLAND SQUARE DRIVE, ORLAND PARK, IL

