

DOOR & HARDWARE SCHEDULE

ALL HARDWARE SHALL BE FREE IN THE DIRECTION OF EGRESS AND OPERABLE WITH ONE HAND WITHOUT ANY TIGHT GRASPING, TWISTING, OR SPECIAL KNOWLEDGE TO OPERATE.

DOOR NO.	TYP.	SIZE	MAT.	FIN.	LOV.	MAT.	FIN.	TYP.	U.L.	HARDWARE	SIGN.	DTL.	NOTES
1&2	E2	3'-0"X6'-8"X1 3/4"	ST	PT	--	WD	PT	F2	--	H2,C,LD,T,W,SF	--	--	12,4,5,8
3&4	E1	3'-0"X6'-8"X1 3/4"	ST	PT	--	WD	PT	F2	--	H2,C,LD,T,W,SF	--	--	12,4,5,8
5	F	3'-0"X6'-8"X1 3/4"	WD	UF	--	HM	UF	F2	--	H2,L,V,SF	HC TOILET	--	3,8
6	F	3'-0"X6'-8"X1 3/4"	WD	UF	--	HM	UF	F2	B	H2,C,L,S,W	MECHANICAL	--	7,8,9
7	F	3'-0"X6'-8"X1 3/4"	WD	UF	--	HM	UF	F2	--	H2,C,L,S,W	--	--	8,9
8	P	3'-0"X6'-8"X1 3/4"	ST	PT	--	WD	PT	F2	--	H2,L,S,T,W,G,SF	MECHANICAL	--	2,4
9&10	PG	3'-0"X6'-8"X1 3/4"	ST	PT	--	WD	PT	F2	--	H2,C,LD,T,W,SF	--	--	2,4,5,6,8
11&12	PG	3'-0"X6'-8"X1 3/4"	ST	PT	--	WD	PT	F2	--	H2,C,LD,T,W	--	--	2,4,5,6,8

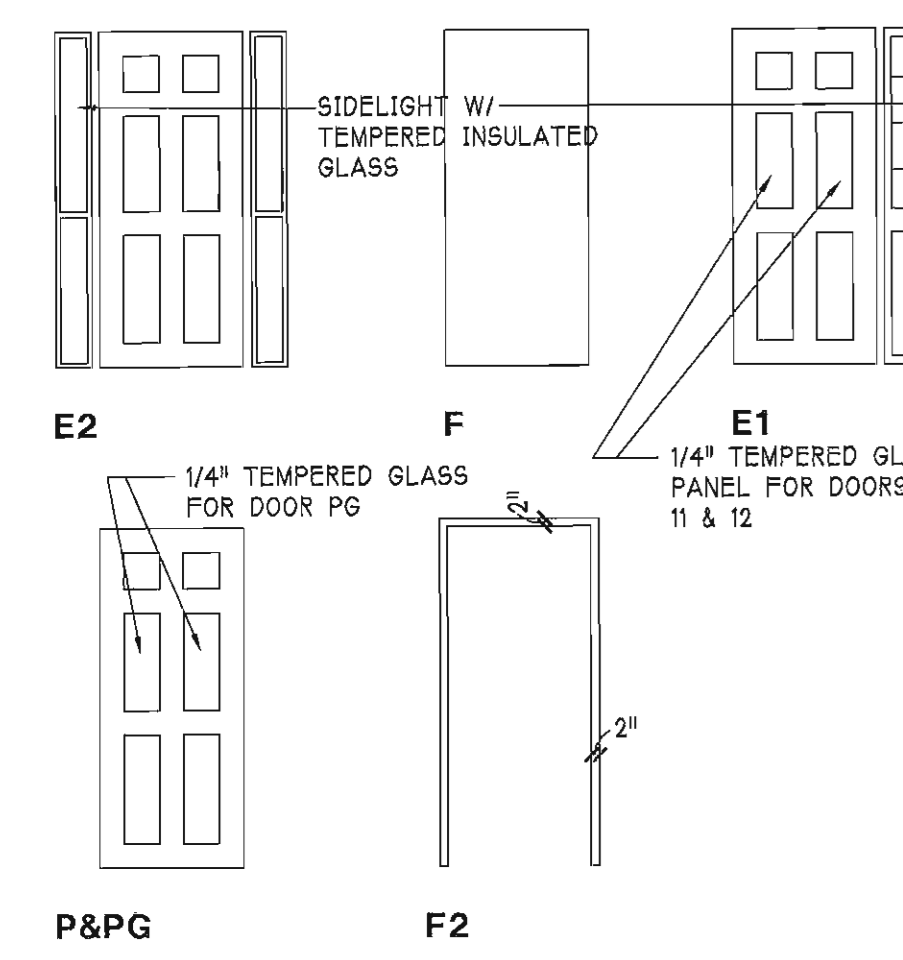
ABBREVIATIONS:
 HM HOLLOW METAL (F2 = 2" HEAD)
 PT PAINT
 ST STEEL
 WD WOOD (SOLID CORE)
 UF UNFINISHED

HARDWARE:
 C CLOSER - HANDICAP
 H HINGES (H2 = 1 PR)
 L LOCKSETS
 D DEADBOLT W/ LEVER
 S STORAGE
 V PRIVACY
 G CHAIN GUARD
 S STOP
 W = WALL, F = FLOOR
 THRESHOLD WEATHERSTRIPPING

GENERAL NOTES:
 1. EXIT DOORS SHALL BE KEYLESS LOCKSETS ON EGRESS SIDE W/ FLUSH BOLTS, DEADBOLTS OR DRAWBOLTS.
 2. ALUMINUM THRESHOLD 1/2" MAX.
 3. GLASS WITHIN 24" OF DOORS SHALL BE TEMPERED SAFETY GLASS

NOTES:
 1. TEMPERED INSULATED GLASS SIDELIGHT.
 2. INSULATED DOOR FLUSH BOLTS.
 3. HANDICAP TOILET SYMBOL & WORDS W/ BRAILLE SYMBOLS.
 4. EMBOSSED RAISED PANEL.
 5. TENANT ADDRESS.
 6. VIEWER WINDOW W/ TEMPERED GLASS. SEE DTL 33/A5.
 7. UNDERCUT DOOR 1 1/2"
 8. SEE PLAN FOR SWING
 9. PROVIDE KNURLED TEXTURED HANDLE

DOOR & FRAME TYPES



ROOM FINISH SCHEDULE (11/3)

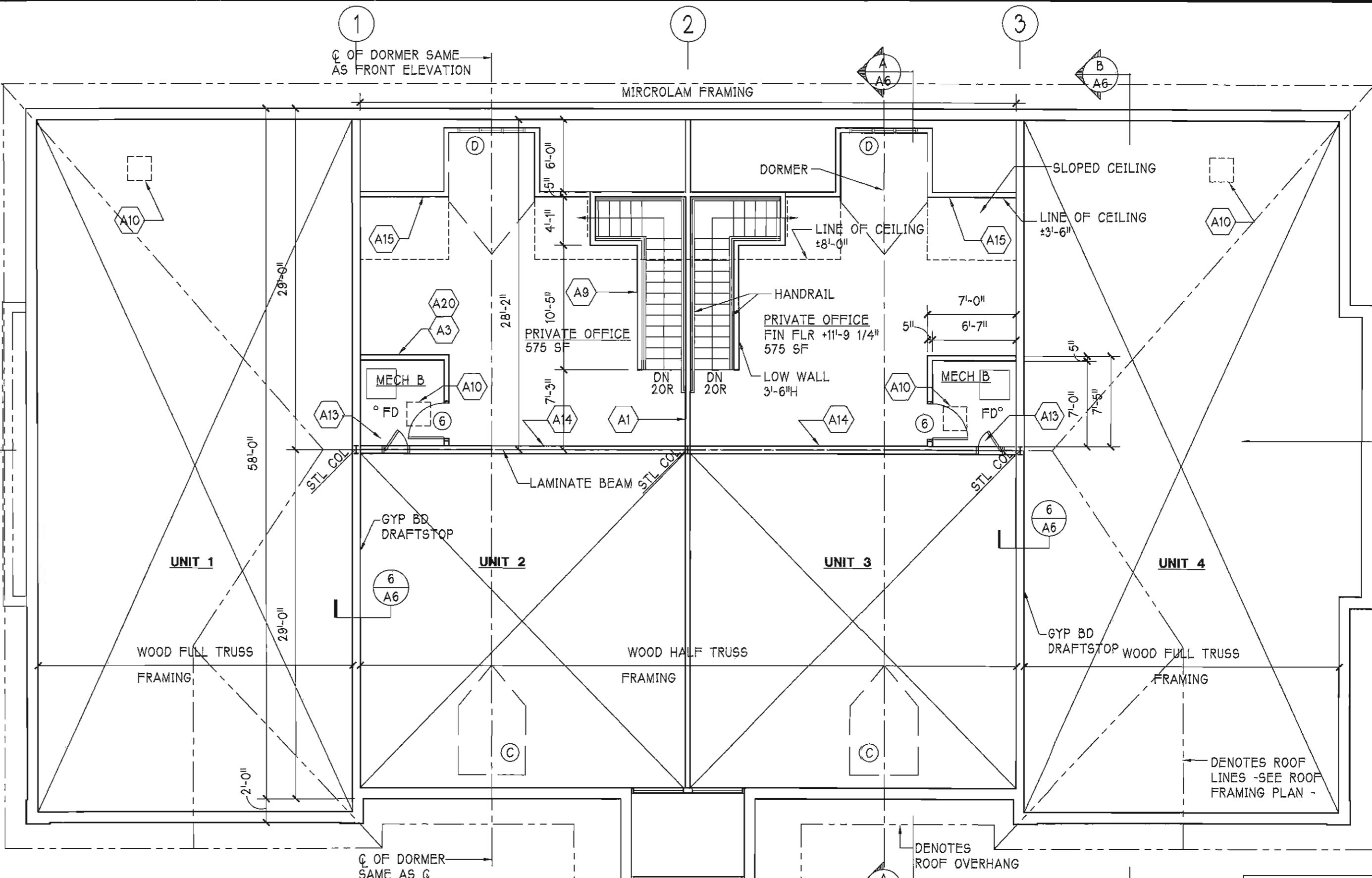
NO.	NAME	FLR.	FIN.	BASE	WALL-FIN.	CLG.-FIN.	HT.
--	UNITS 1-4	CO	SL	--	CM/UF	GB/UF	10'-4 1/2"
--	TOILET	CO	SL	--	GB/UF	GB/UF	10'-4 1/2"
--	MECHANICAL A	CO	SL	--	GB/CM/UF	GB/UF	10'-4 1/2"
--	MECHANICAL B	WD	RT	VB	GB/UF	GB/UF	8'-0 1/2"
--	STORAGE A	CO	SL	--	GB/CM/UF	GB/UF	10'-4 1/2"
--	PRIVATE OFFICE	CO	RT	VB	GB/UF	GB/UF	8'-0 1/2"
--	BUILDING MECH.	CO	SL	VB	CM/GB/UF	CM/GB/UF	10'-4 1/2"
--	VESTIBULE	CO	CT	CT	GB/PT	GB/PT	PITCHED

ABBREVIATIONS:
 CO CONCRETE
 CM CONCRETE MASONRY
 CT CERAMIC TILE
 GB GYPSUM BOARD
 PT PAINT
 SL SEALER
 UF UNFINISHED
 WD PLYWOOD ON WOOD FRAMING

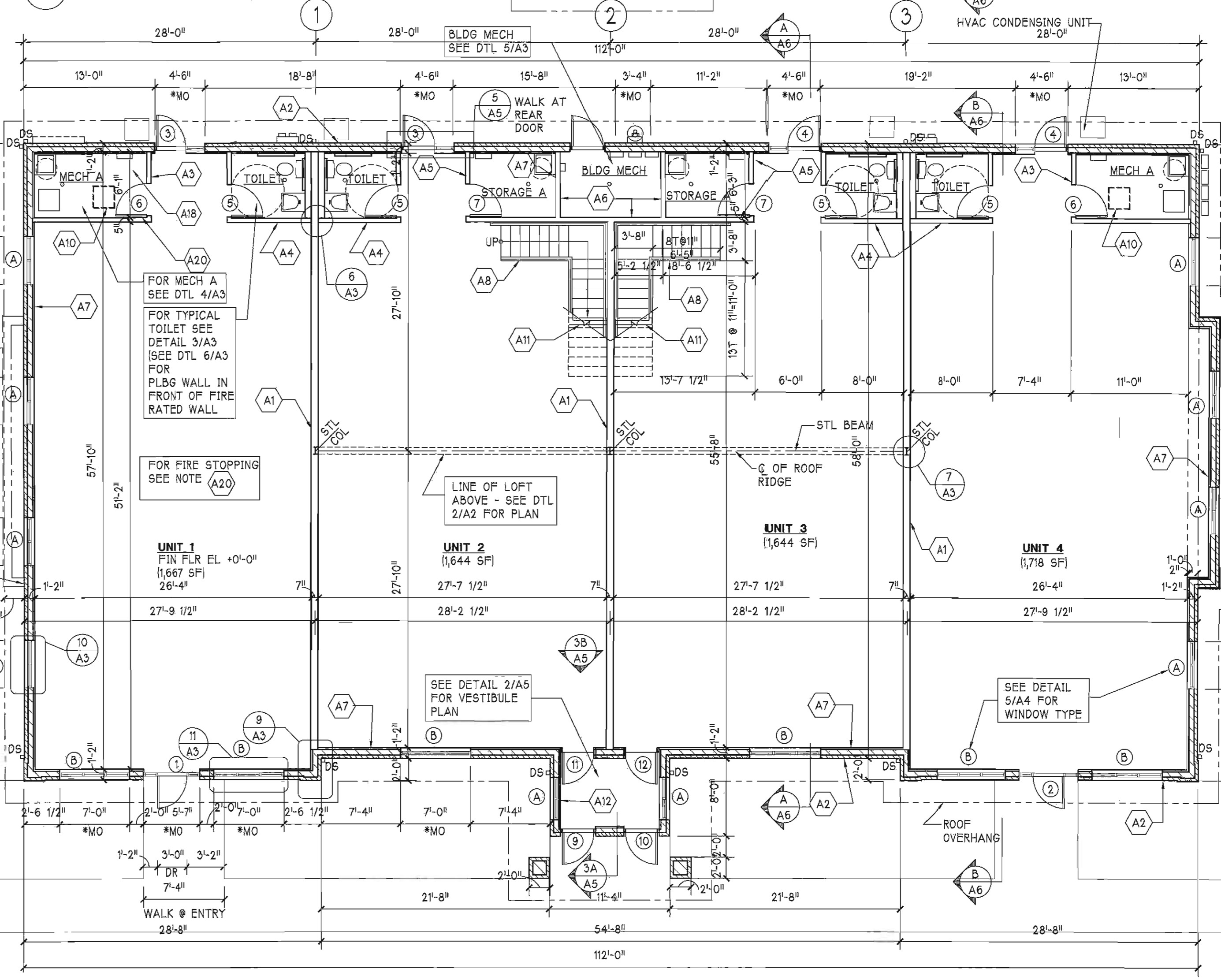
NOTE:
 1. UNIT FINISHES BY TENANT
 2. CEILING HEIGHT NOTED TO BOTTOM OF GYP. BD CEILING ON FRAMING
 3. GYP. BD. / WALL FURNISH BY TENANT. SEE SCOPE OF WORK NOTE A7 SHEET A2

SCOPE OF WORK NOTES ARCHITECTURAL (A)

- A1 TENANT DEMISING WALL [7"]; 1 1/2 HOUR FIRE RATED (S1M UL-1005); 11 LAYER 5/8" FIRE RATED GYP. BD. ON 2"x6" STUDS @ 16" O.C. W/ 6" SOUND INSULATION. (TO BOTTOM OF ROOF TRUSSES @ 10'-4") (OPTION: METAL STUDS - UL-10419)
- A2 EXTERIOR MASONRY WALL [12"]; 4" FACEBRICK/ CULTURED STONE W/ 8" CONCRETE MASONRY WALL W/ GALVANIZED HORIZONTAL WALL REINFORCING @ 16" O.C. PROVIDE VERTICAL WALL REINFORCING PER STRUCTURAL DRAWINGS. SEE NOTE A7 FOR FURRING BY TENANT & BUILDING SECTIONS A/A6 & B/A6. (4-HOUR FIRE RATED SIM TO UL-1002)
- A3 TENANT MECHANICAL ROOM WALL [5"]; 1 1/2 HOUR FIRE RATED WALL (UL-1005) 11 LAYER 5/8" FIRE RATED GYP. BD. ON 2"x4" STUDS @ 16" O.C. W/ 4" SOUND INSULATION. (TO BOTTOM OF ROOF TRUSSES @ 10'-4") (OPTION: METAL STUDS UL-10419)
- A4 TOILET PARTITION WALL [5"]; 5/8" GYP. BD. ON 2"x4" WOOD STUDS @ 16" O.C. W/ 4" SOUND INSULATION TO BOTTOM OF ROOF TRUSSES (10'-4")
- A5 STORAGE PARTITION WALL [5"]; 1/2" GYP. BD. ON 2"x4" WOOD STUDS @ 16" O.C.
- A6 DEMISING WALL [5"]; 1 1/2 HOUR FIRE RATED (UL-1005); 11 LAYER 5/8" FIRE RATED GYP. ON 2"x4" STUDS @ 16" O.C. W/ 4" BATT INSULATION W/ VAPOR BARRIER. (OPTION: METAL STUDS - UL-10419)
- A7 EXTERIOR WALL FURRING (BY TENANT); 11 LAYER 5/8" GYPSUM BOARD ON VAPOR BARRIER ON 2"x2" WOOD FURRING W/ 1 1/2" RIGID WALL INSULATION (R7.5).
- A8 STAIR CONSTRUCTION: WOOD STAIR W/ CLOSED RISER & 1 1/4" WOOD HANDRAIL. MOUNT 2'-10" ABOVE TREAD W/ WALL BRACKETS (BLOCK SOLID); PROVIDE 1/2" GYP. BD. ON UNDERSIDE OF STAIR TO CLOSURE WALL UNDER STAIR. SEE BUILDING SECTION A/A6.
- A9 STAIR KNEE WALL [5"]; 1/2" GYP. BD. BOTH SIDES ON 2"x4" STUDS @ 16" O.C., 42" H. W/ WOOD CAP FROM FLOOR TO LANDING. WALL TO LOFT FINISH FLOOR SHALL BE FULL HEIGHT. SEE BUILDING SECTION A/A6.
- A10 FIRE RATED ATTIC ACCESS PANEL - VERIFY/ COORDINATE LOCATION W/ HVAC DUCTWORK.
- A11 APPROXIMATE LOCATION OF CEILING CLEARANCE OF 7'-0" W/ CLOSURE WALL @ STAIR STRINGER.
- A12 EXTERIOR WALL FURRING (BY DEVELOPER) SAME AS NOTE A7
- A13 FIRE RATED ATTIC ACCESS PANEL (WALL TYPE)
- A14 5/8" GYPSUM BOARD ON ROOF TRUSS VERTICAL CHORD.
- A15 5/8" GYPSUM BOARD ON 2"x4" WOOD STUDS @ 16" O.C. CLOSURE WALL W/ 3 1/2" BATT INSULATION W/ VAPOR BARRIER
- A16 PLUMBING WALL: 5/8" WATER RESISTANT GYPSUM BOARD ON 2"x6" WOOD STUDS @ 16" O.C.
- A17 NOT USED
- A18 PROVIDE (2) LAYERS OF 5/8" FIRE RATED GYPSUM BOARD CEILING ON ROOF TRUSSES BOTTOM CHORD & SPRINKLER HEAD - AS DIRECTED BY BUILDING DEPARTMENT - VERIFY WITH FIRE DISTRICT.
- A19 4" ALUMINUM SIDING W/ CORNER BOARDS ON BUILDING PAPER ON 1/2" EXTERIOR PLYWOOD ON 2"x4" WOOD STUDS @ 16" O.C. (NOTE: PROVIDE INSULATION W/ VAPOR BARRIER @ REAR (TRUE) DORMERS).
- A20 TYPICAL FOR ALL FIRE RATED BARRIERS: PROVIDE FIRE DAMPERS @ DUCTWORK (SEE SHEET M1) & PENETRATIONS ARE TO BE SEALED W/ A FIRE SEALANT/COMPOUND EQUAL TO GE SILICONE OR DOW CORNING SEALANT/FOAM/COMPOUND, EQUAL TO UL1479 LABEL ACCORDING TO ASTM E814.



2 LOFT FLOOR PLAN



1 FIRST FLOOR PLAN

1/8" = 1'-0"

* M.O. - VERIFY MASONRY OPENING W/ DOOR OR WINDOW MANUFACTURER

(SEE ADJACENT UNITS FOR TYPICAL NOTES & DIMENSIONS)

NORTH

VARIES - SEE SITE KEY PLAN SHEET A1 FOR ORIENTATION

CRAIG A. PODALAK ARCHITECTS
 12410 S. NASHVILLE AVE.
 PALOS HEIGHTS, IL 60463
 708 / 389-3333

GLEN OAKS PHASE 5 OFFICE PARK
 10640-10720 W 165TH STREET
 ORLAND PARK, ILLINOIS
 PROJECT NO. 0816
 DATE 7-15-08
 DRAWN BY RD
 CHECKED BY CAP
 FILE 0816A2
 COPYRIGHT © 2008 CRAIG A. PODALAK RESERVES COPYRIGHT & OTHER RIGHTS RESTRICTING THESE DOCUMENTS TO THE ORIGINAL SITE OR PURPOSE FOR WHICH THEY WERE PREPARED. REPRODUCTIONS, CHANGES, OR ASSIGNMENTS ARE PROHIBITED.
 A2
 2 OF 14