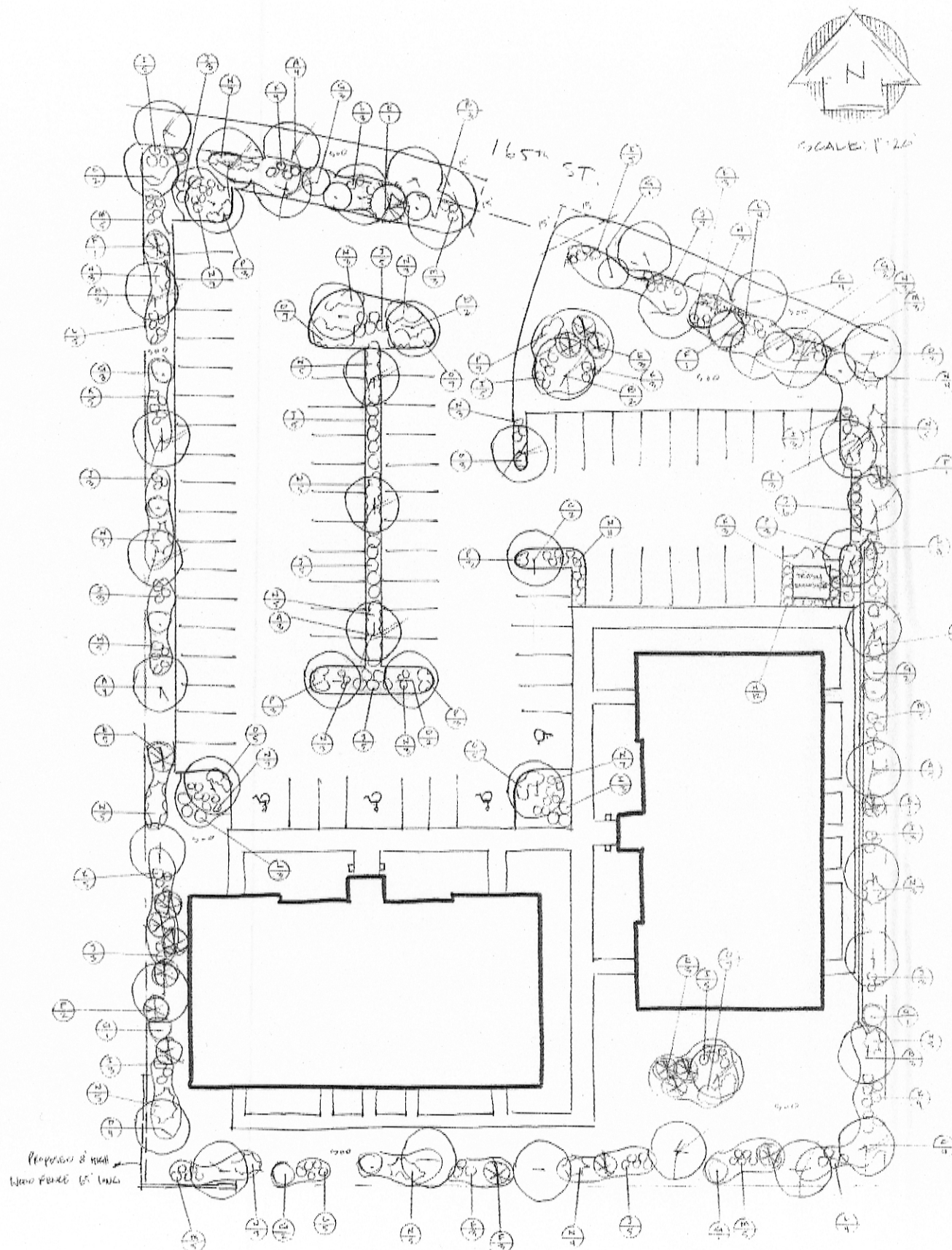


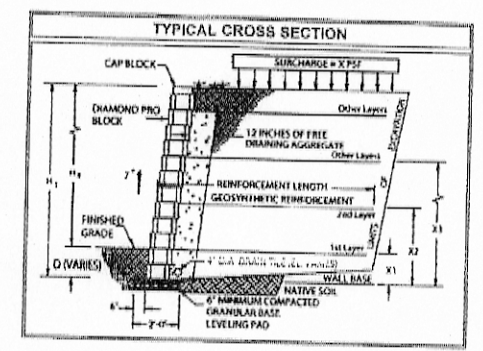
RECEIVED  
JUL 13 2007  
By \_\_\_\_\_



QTY	KEY	BOTANICAL NAME	COMMON NAME	SIZE	REMARKS
16	A	Quercus bicolor	Swamp White Oak	2.5" Cal	Central Leader
11	B	Celtis occidentalis	Common Hackberry	2.5" Cal	Central Leader
12	C	Acer rubrum 'Autumn Blaze'	Autumn Blaze Maple	2.5" Cal	Central Leader
11	D	Pyrus calleryana 'Aristocrat'	Aristocrat Pear	2.5" Cal	Central Leader
9	E	Pinus strobus	American Pine	6" tall	Natural Form
9	F	Picea pungens	Colorado Spruce	6" tall	Sheared
16	G	Malus spp.	Flowering Crabapple	6" tall	Multi-stem Sheared
12	H	Thuja occidentalis 'Toby'	Toby Arborvitae	4" tall	
15	I	Cornus baharii	Redtwig Dogwood	36" tall	3" o.c.
59	J	Euroyuanus alatus 'Lampara'	Dwarf Burning Bush	36" tall	4" o.c.
35	K	Forsythia x intermedia 'Spring Glory'	Spring Glory Forsythia	36" tall	5" o.c.
11	L	Viburnum dentatum	Arrowwood Viburnum	36" tall	3" o.c.
31	M	Viburnum lentum	Moluccan Viburnum	36" tall	3" o.c.
120	N	Juniperus chinensis 'Sea Green'	Sea Green Juniper	18" tall	3" o.c.
34	O	Veronica spicata 'Goodness Gracious'	Goodness Grass Veronica	#1	18" o.c.
23	P	Hemerocallis spp. 'Stella de Oro'	Stella de Oro Daylily	#1	18" o.c.

**General Notes:**

- Plant quantities shown in the Plant Schedule are for providing and installing all materials shown on the plan and should not rely on the Plant Schedule for determining quantities.
- Size and grading standards of plant materials shall conform to the latest edition of ANSI Z60.1, AMERICAN STANDARD FOR NURSERY STOCK, by the American Nursery & Landscape Association.
- All plant materials shall be nursery grown stock and shall be free of any deformities, diseases or insect damage. Any materials with damaged or crooked/damaged leaders, bark abrasion, sunscald, insect damage, etc. are not acceptable and will be rejected. Trees with multiple leaders will be rejected unless specified in the Plant Schedule as multi-stem.
- All plant materials shall be inspected and approved by the Landscape Architect prior to installation. Any materials installed without approval may be rejected.
- Any existing trees to be retained shall be protected from soil compaction and other damages that may occur during construction activities by erecting fencing around such materials at a distance of at least 8.5' from the trunk.
- Guying and staking shall only be incorporated with the planting of trees if specified by contractor.
- All plant material shall be guaranteed for one full year excluding perennials.
- Mulch shall be spread at a 3" depth using streaked hardwood bark mulch.
- Any utility damage done at installation will be handled by the owner or contractor.
- All lawn areas to be sodded.
- No existing trees are to remain on property.
- No wetlands exist on or within 50' of property.

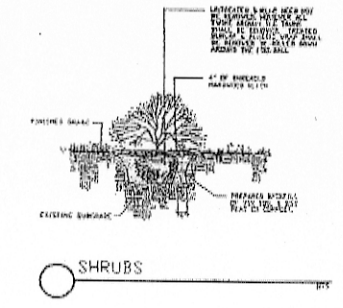
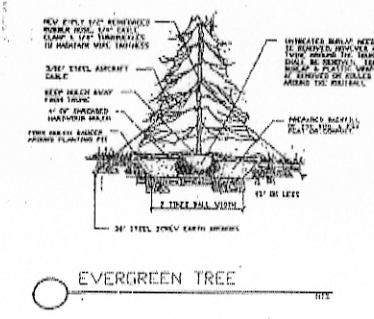
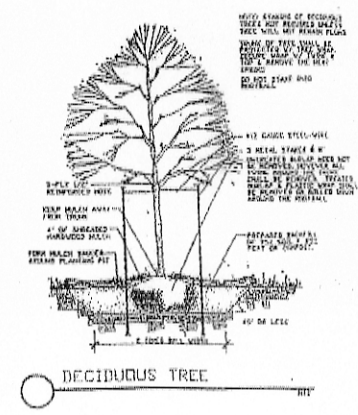


**PRODUCT INFORMATION**

Anchor Diamond Pro™ is available with a straight or beveled face. Quantity/sq. ft. approximately 1 piece.

	Straight - 17.0" x 12" x 0"	Beveled - 16.93" x 12" x 0"
Wt./piece	78 lbs	72 lbs
Pcs./pallet	36	36
Wt./pallet	2808 lbs	2592 lbs
Sq. Ft./pallet	36	36

BOARD APPROVED  
CASE NO. 2007-0467.0  
DATE 8/6/07  
/CONDITIONS \_\_\_\_\_  
/NO CONDITIONS ✓



WATERSKI INC.

**Benny**  
LANDSCAPING

15001 W. 159th St.  
Lockport, IL 60441 (815)838-4188

**GREEN OAKS INDUSTRIAL PARK**  
DATE: 11-13-06 SCALE: 1"=20' DRAWN BY: R-TE REVISION: 05-04-07  
LOT 14 165th ST.  
ORLAND PARK, IL DRAWING NUMBER \_\_\_\_\_