

Proposed Office Warehouse Spec. Building Lot 15

To be located at
Lot 15 Orland Park Business Center
 11545 W. 183rd. Place
 Orland Park, Illinois

Developer:
Orland Park Business Center L.L.C.
 11504 South 183rd Street Suite SW & NW
 Orland Park, Illinois 60467
 tel: (708) 479-8666
 fax: (708) 479-6976

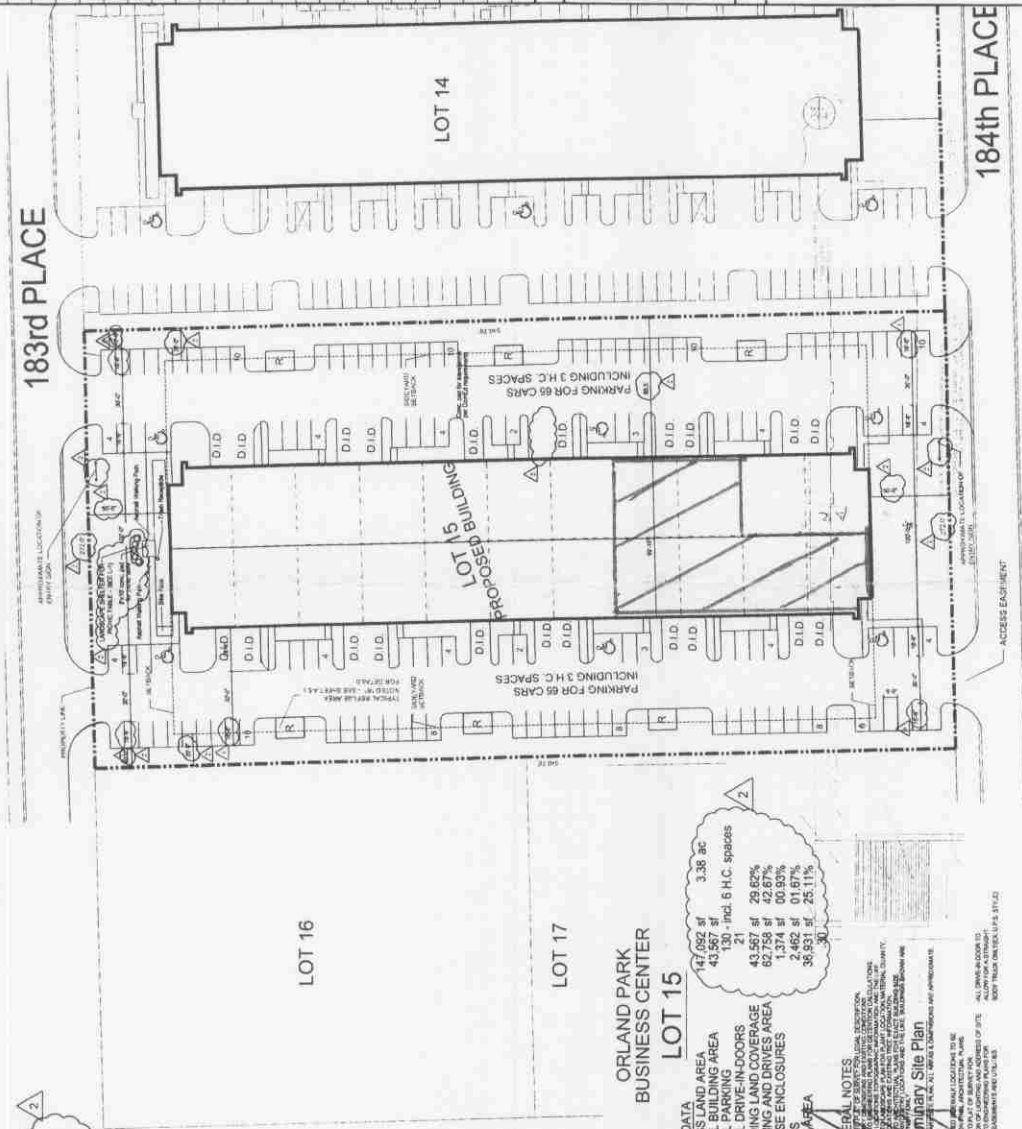
Builder:
John Charles Midwest
 11504 South 183rd Street Suite SW & NW
 Orland Park, Illinois 60467
 tel: (708) 479-8646
 fax: (708) 479-6976

Architect:
The Shalvis Group, P.C.
 11508 W. 183rd Street Suite NW
 Orland Park, Illinois 60467
 tel: (708) 478-6830
 fax: (708) 478-6831

Land Design/Landscape Architect:
Bergfroy Gregory Land Design, Ltd.
 11508 W. 183rd Street Suite NW
 Orland Park, Illinois 60467
 tel: (708) 478-6830
 fax: (708) 478-6831

Civil Engineer:
KDC Consultants Inc.
 P.O. Box. 838
 Oak Lawn, Illinois 60454
 tel: (708) 645-0545
 fax: (708) 645-0546

Electrical/ Mechanical/ Plumbing:
 The M.E.P.F.P. shall be
 Design/Build



BOARD APPROVED
 CASE NO. 2011-0035
 DATE 4.4.11
 W/CONDITIONS ✓
 V/O CONDITIONS

SCHEMATIC SITE PLAN
 SCALE: 1/8" = 1'-0"
 REFER TO LANDSCAPE PLAN AND CIVIL ENGINEERING DRAWINGS PREPARED BY OTHER FOR FURTHER INFORMATION.

Notes:
 1. This application is for **SHELL PERMIT ONLY, including underground sanitary**. Tenant built-outs, including the tenant separation walls, shall be covered under separate permits when the spaces are leased out. The separation walls and space layout shown on these plans is based on the highest probability of future tenant usage.
 2. All building signage shall be covered under separate permits for each individual built-out.

ARCHITECT'S CERTIFICATION AND SEAL:
 PROJECT NUMBER: 11-0027
 DATE: 4/4/11
 SCALE: AS SHOWN
 COMPUTER NAME: JCS

ARCHITECTS CERTIFICATION AND SEAL:
 PROJECT NUMBER: 11-0027
 DATE: 4/4/11
 SCALE: AS SHOWN
 COMPUTER NAME: JCS

| Dwg No | Drawing Description |
|--------|---|
| A-1.0 | Cover Sheet, Drawing Index, Code Information, Site Plan |
| A-2.0 | Building Elevations |
| A-3.0 | Floor Plan, Roof Plan, Reflected Ceiling Plan |
| A-4.0 | Schedules and Details |
| A-5.0 | Wall Sections and Details |
| A-5.1 | Trash Enclosure Foundation Plan, Sections, Elevations |
| A-6.0 | General Notes/ Specifications |
| A-6.1 | General Notes/ Specifications |
| S-1 | Structural Drawings by Structure Unlimited, P.C. |
| S-2 | Foundation Plan |
| S-3 | Roof Framing Plan |
| S-4 | Concrete Section and Details |
| S-5 | Steel Sections and Details |
| S-5 | Structural General Notes |
| L-1 | Landscape Drawing by Bergfroy Gregory Land Design, Ltd. |
| M-1 | Mechanical Drawing by John P. Bouchert & Assoc. |
| P-1 | Plumbing Drawing by John P. Bouchert & Assoc. |
| E-1 | Electrical Drawing by John P. Bouchert & Assoc. |

| NO. | DATE | DESCRIPTION |
|-----|----------|-----------------------|
| 1 | 11/11/10 | ISSUES AND REVISIONS: |
| 2 | 11/11/10 | ISSUES AND REVISIONS: |
| 3 | 11/11/10 | ISSUES AND REVISIONS: |
| 4 | 11/11/10 | ISSUES AND REVISIONS: |
| 5 | 11/11/10 | ISSUES AND REVISIONS: |
| 6 | 11/11/10 | ISSUES AND REVISIONS: |
| 7 | 11/11/10 | ISSUES AND REVISIONS: |
| 8 | 11/11/10 | ISSUES AND REVISIONS: |
| 9 | 11/11/10 | ISSUES AND REVISIONS: |
| 10 | 11/11/10 | ISSUES AND REVISIONS: |
| 11 | 11/11/10 | ISSUES AND REVISIONS: |
| 12 | 11/11/10 | ISSUES AND REVISIONS: |
| 13 | 11/11/10 | ISSUES AND REVISIONS: |
| 14 | 11/11/10 | ISSUES AND REVISIONS: |
| 15 | 11/11/10 | ISSUES AND REVISIONS: |
| 16 | 11/11/10 | ISSUES AND REVISIONS: |
| 17 | 11/11/10 | ISSUES AND REVISIONS: |
| 18 | 11/11/10 | ISSUES AND REVISIONS: |
| 19 | 11/11/10 | ISSUES AND REVISIONS: |
| 20 | 11/11/10 | ISSUES AND REVISIONS: |
| 21 | 11/11/10 | ISSUES AND REVISIONS: |
| 22 | 11/11/10 | ISSUES AND REVISIONS: |
| 23 | 11/11/10 | ISSUES AND REVISIONS: |
| 24 | 11/11/10 | ISSUES AND REVISIONS: |
| 25 | 11/11/10 | ISSUES AND REVISIONS: |
| 26 | 11/11/10 | ISSUES AND REVISIONS: |
| 27 | 11/11/10 | ISSUES AND REVISIONS: |
| 28 | 11/11/10 | ISSUES AND REVISIONS: |
| 29 | 11/11/10 | ISSUES AND REVISIONS: |
| 30 | 11/11/10 | ISSUES AND REVISIONS: |