



20 N. Wacker Drive, Ste 1660  
Chicago, Illinois 60606-2903  
T 312 984 6400 F 312 984 6444

15010 S. Ravinia Avenue, Ste 10  
Orland Park, Illinois 60462-5353  
T 708 349 3888 F 708 349 1506

DD 312 984 6452  
lstream@ktjlaw.com

[www.ktjlaw.com](http://www.ktjlaw.com)

December 30, 2011

**VIA FEDERAL EXPRESS**

Kevin Lehmann  
Village of Orland Park  
14700 South Ravinia Avenue  
Orland Park, IL 60462

RE: Plat of Subdivision-Sheffield Square

Dear Mr. Lehmann:

At your request, our Firm has recorded with the Office of the Recorder of Deeds of Cook County the enclosed original Plat of Subdivision of Sheffield Square, PINs #27-17-201-019 and #27-17-201-016 (part of). The Plat was recorded on December 22, 2011 at a cost of \$206.00. This document should be retained in the official records of the Village of Orland Park Park.

If you should have any questions, please do not hesitate to contact me.

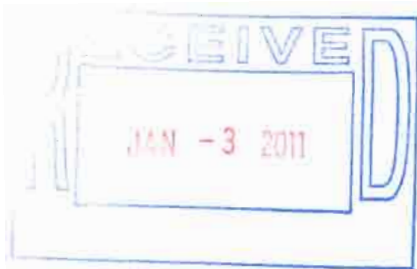
Very truly yours,

KLEIN, THORPE AND JENKINS, LTD.

Linda Stroom  
Sr. Paralegal

Encl(s).

cc: Kathleen Henn, Village Attorney (w/copy for file)



# PLAT



Doc#: 1135639195 Fee: \$206.00  
Eugene "Gene" Moore  
Cook County Recorder of Deeds  
Date: 12/22/2011 03:46 PM Pg: 0

120  
+ 86  

---

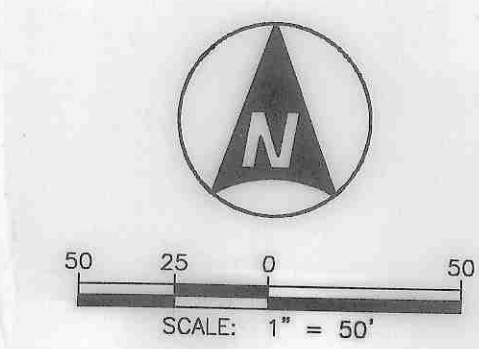
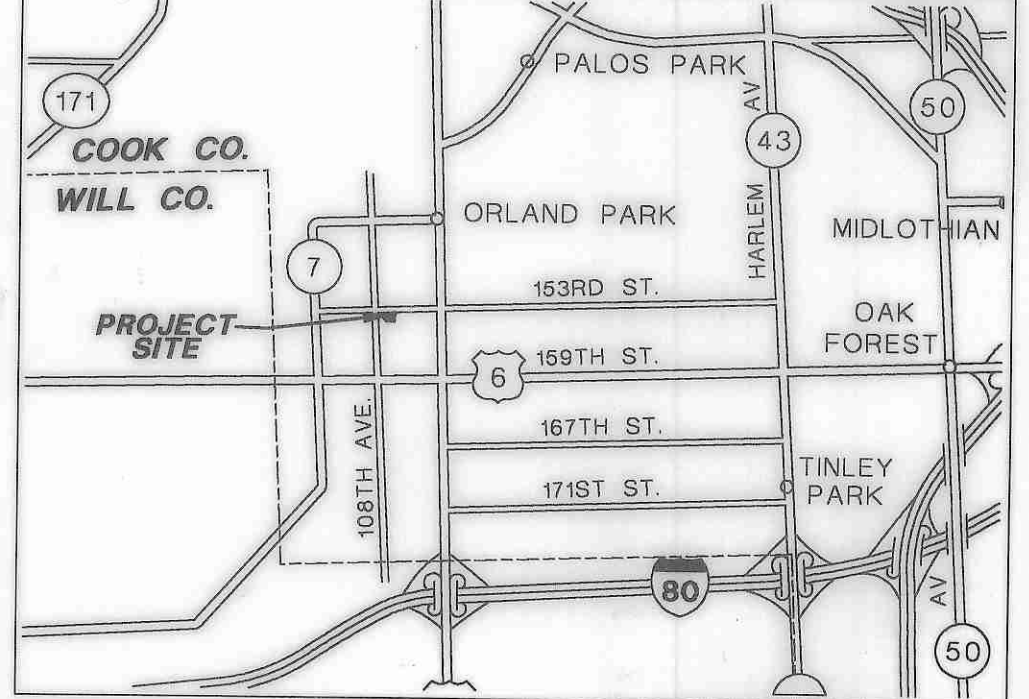
206  
43 CoT



## SEE PLAT INDEX

206  
R



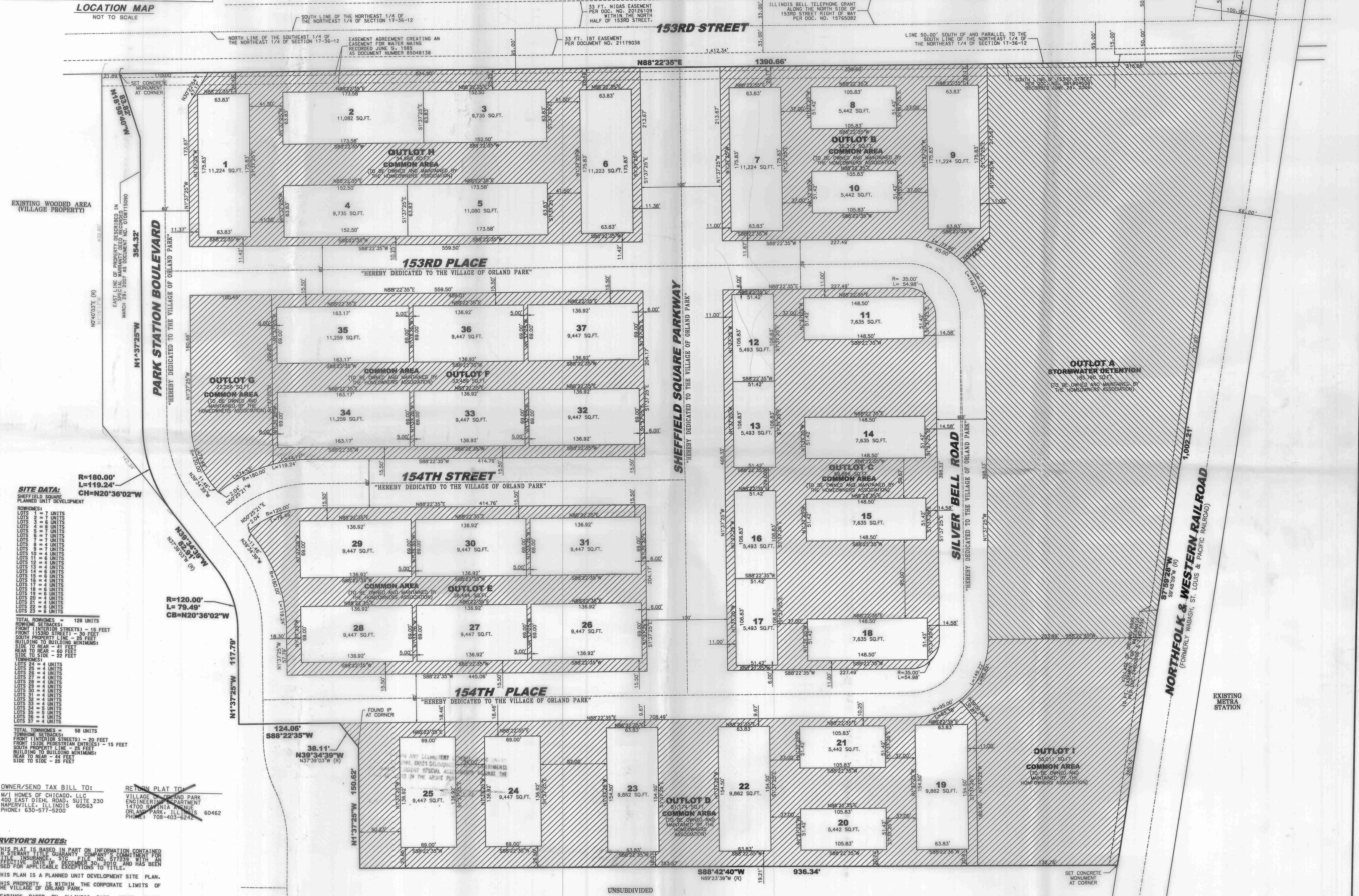


# SHEFFIELD SQUARE

BEING A SUBDIVISION OF PART OF THE NORTHEAST QUARTER OF SECTION 17, TOWNSHIP 36 NORTH, RANGE 12 EAST OF THE THIRD PRINCIPAL MERIDIAN, IN COOK COUNTY, ILLINOIS

Doc#: 113639195 Fee: \$206.00  
Eugene "Gene" Moore  
Cook County Recorder of Deeds  
Date: 12/22/2011 03:48 PM Pg. 0

RECORDING SPACE  
NORTHERN ILLINOIS GAS COMPANY GRANT PER DEC. NO. 17625-621  
PLN: 27-17-201-019  
PT 27-17-201-016



**SITE DATA:**  
SHEFFIELD SQUARE  
PLANNED UNIT DEVELOPMENT

**ROWNS:**  
LOTS 1 = 4 UNITS  
LOTS 2 = 4 UNITS  
LOTS 3 = 4 UNITS  
LOTS 4 = 4 UNITS  
LOTS 5 = 4 UNITS  
LOTS 6 = 4 UNITS  
LOTS 7 = 4 UNITS  
LOTS 8 = 4 UNITS  
LOTS 9 = 4 UNITS  
LOTS 10 = 4 UNITS  
LOTS 11 = 4 UNITS  
LOTS 12 = 4 UNITS  
LOTS 13 = 4 UNITS  
LOTS 14 = 4 UNITS  
LOTS 15 = 4 UNITS  
LOTS 16 = 4 UNITS  
LOTS 17 = 4 UNITS  
LOTS 18 = 4 UNITS  
LOTS 19 = 4 UNITS  
LOTS 20 = 4 UNITS  
LOTS 21 = 4 UNITS  
LOTS 22 = 4 UNITS  
LOTS 23 = 4 UNITS

**TOTAL ROWNS = 128 UNITS**

**ROWNS SETBACKS:**  
FRONT (INTERIOR STREETS) - 15 FEET  
FRONT (153RD STREET) - 35 FEET  
SOUTH PROPERTY LINE - 25 FEET  
BUILDING TO BUILDING MINIMUMS:  
SIDE TO REAR - 41 FEET  
REAR TO REAR - 44 FEET  
SIDE TO SIDE - 22 FEET

**TOWNSHIP:**  
LOTS 24 = 4 UNITS  
LOTS 25 = 4 UNITS  
LOTS 26 = 4 UNITS  
LOTS 27 = 4 UNITS  
LOTS 28 = 4 UNITS  
LOTS 29 = 4 UNITS  
LOTS 30 = 4 UNITS  
LOTS 31 = 4 UNITS  
LOTS 32 = 4 UNITS  
LOTS 33 = 4 UNITS  
LOTS 34 = 4 UNITS  
LOTS 35 = 4 UNITS  
LOTS 36 = 4 UNITS  
LOTS 37 = 4 UNITS

**TOTAL TOWNSHIP = 58 UNITS**

**TOWNSHIP SETBACKS:**  
FRONT (INTERIOR STREETS) - 20 FEET  
FRONT (SIDE PROPERTY LINE) - 15 FEET  
SOUTH PROPERTY LINE - 25 FEET  
BUILDING TO BUILDING MINIMUMS:  
REAR TO REAR - 44 FEET  
SIDE TO SIDE - 25 FEET

**OWNER/SEND TAX BILL TO:**  
M/I HOMES OF CHICAGO, LLC  
400 EAST DIEHL ROAD, SUITE 230  
NAPERVILLE, ILLINOIS 60563  
PHONE: (630) 577-5200

**RETURN PLAT TO:**  
VILLAGE OF ORLAND PARK  
ENGINEERING DEPARTMENT  
14700 RAVENNA AVENUE  
ORLAND PARK, ILLINOIS 60462  
PHONE: 708-403-6244

**SURVEYOR'S NOTES:**

- THIS PLAT IS BASED IN PART ON INFORMATION CONTAINED IN STEWART TITLE GUARANTY COMPANY'S COMMITMENT FOR TITLE INSURANCE, STIC FILE NO. 372239 WITH AN EFFECTIVE DATE OF DECEMBER 30, 2010 AND HAS BEEN USED FOR APPLICABLE EXCEPTIONS TO TITLE.
- THIS PLAN IS A PLANNED UNIT DEVELOPMENT SITE PLAN.
- THIS PROPERTY IS WITHIN THE CORPORATE LIMITS OF THE VILLAGE OF ORLAND PARK.
- BEARINGS BASED ON ILLINOIS EAST STATE PLANE COORDINATE SYSTEM.
- UPON COMPLETION OF CONSTRUCTION REBAR WILL BE SET AT ALL LOT CORNERS AND POINT CHANGES IN ALIGNMENT (UNLESS OTHERWISE NOTED).
- ACCORDING TO OUR INTERPRETATION OF THE FLOOD INSURANCE RATE MAPS THAT COVER THE AREA, THE HEREIN DESCRIBED PROPERTY FALLS WITHIN ZONE X1. CHANGES DETERMINED TO BE OUTSIDE OF ZONE X1 ANNUAL FLOODPLAIN PER COMMUNITY PANEL NO. 1703100823 WITH AN EFFECTIVE DATE OF AUGUST 19, 2010 AND 1703100701 WITH AN EFFECTIVE DATE OF AUGUST AND 2008 SUBJECT TO AN INTERPRETATION AND SCALING PER MAPS AT 1" = 500.

**GENERAL NOTES:**

- ALL DIMENSIONS ARE GIVEN IN FEET AND DECIMAL PARTS THEREOF.
- NO DIMENSIONS SHALL BE DERIVED FROM SECTIONS.

**EASEMENT LEGEND:**  
OUTLOTS B, C, D, E, F, G, H AND I, DESIGNATED "COMMON AREA", ARE COVERED BY BLANKET EASEMENT FOR PUBLIC UTILITIES, SIDEWALKS AND DRAINAGE. (EXCEPT THOSE PARTS FALLING WITHIN DECKS, PATIOS AND MONUMENT SIGNS)  
OUTLOT A IS COVERED BY A BLANKET EASEMENT FOR PUBLIC UTILITIES, SIDEWALKS AND DRAINAGE; AND ALSO A STORMWATER DETENTION EASEMENT.

DESIGNED	AJM
DRAWN	DAG
APPROVED	MTB
DATE	7-08-11
DATE	10-27-11
DATE	9-29-11
DATE	
DESCRIPTION OF REVISION	
REVISOR	
DATE	
SCALE	1"=50'

**FINAL PLAT OF SUBDIVISION  
SHEFFIELD SQUARE  
ORLAND PARK, ILLINOIS**

SHEET INDEX:  
PAGE 1 OF 2 - LOT DETAIL  
PAGE 2 OF 2 - OVERALL BOUNDARY CERTIFICATES

SHEET  
**1 OF 2**

PROJECT NUMBER: 1393D  
© MACKIE CONSULTANTS LLC, 2011  
ILLINOIS FIRM LICENSE 184-002694

2 of 2  
1135639195

**Mackie Consultants, LLC**  
9575 W. Higgins Road, Suite 500  
Rosemont, IL 60018  
(847) 696-1400  
www.mackieconsult.com

CLIENT:  
**M/I HOMES OF CHICAGO, LLC**  
400 EAST DIEHL ROAD, SUITE 230  
NAPERVILLE, ILLINOIS 60563  
PHONE: (630) 577-5200



