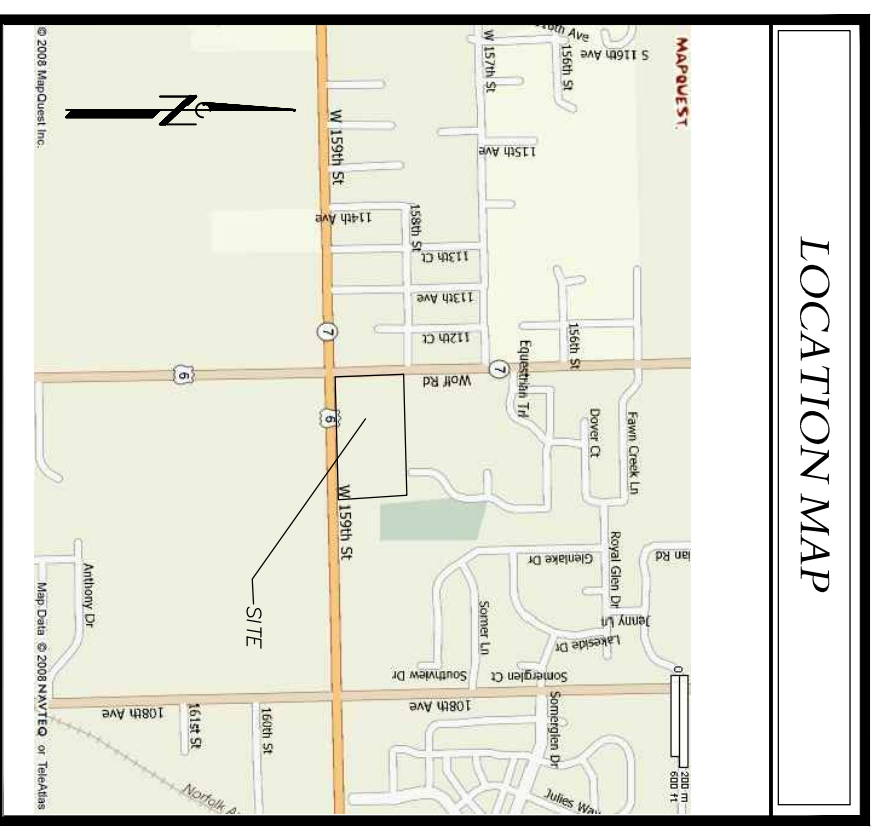


notes:  
 from pipes at all lot corners.  
 Locations of utilities shown herein are based on visible evidence thereof.  
 This plat was prepared with reference to a Policy of Title Insurance issued by Old Republic National Title Insurance Company under file 1345659 as Policy C0808991426. The lands shown and described herein are the same as those shown and described in said Policy. The names of the parties to said Schedule "B," Section II of said Policy relating matters of survey pertinent to the platred lands are shown or otherwise noted herein.  
 All easements shown herein were granted by the Plat of Wolf Point Plaza, Document 1026045035 except as noted.  
 The platred lands are subject to the terms and conditions contained in Documents 1026045035, 6723215125, 1010929107, 1026004126, 1026004128, 1026004142 and 1026004144 as indicated to the Document cited.  
 The platred lands do not fall in a designated Flood Hazard Area as defined by the Federal Emergency Management Agency.  
 No zoning information was provided by the insurer.  
 There were 682 painted parking stalls on the platred lands, of which 678 were 8' in width and 4 were 16' in width.



- Legend:
- = sanitary sewer
  - = storm sewer
  - = water main
  - = electric line
  - = sanitary sewer manhole
  - = storm sewer structure
  - = hydrant
  - = water meter
  - = Humane

State of Illinois } S.S.  
 County of DuPage }  
 To: ALZ-Chand Park, LLC, Ally Bank (Ally Bank Capital in Hawaii, Mississippi, Montana and New Jersey), its successors and assigns, and Old Republic National Title Insurance Company.  
 This is to certify that this map or plat and the survey on which it is based were made by me or under my direct supervision and adopted by ALTA and NSRS and includes forms 1, 2, 3, 4, 6(B), 8, 9, 11(G), 14, 16, 17 and 18 of Table A thereof. The field work was completed on November 17, 2015.  
 Given under my Hand and Seal at Wheaton, Illinois this 25th day of November, 2015.

*[Signature]*  
 Professional Surveyor 2967  
 State of Illinois  
 License No. 20679

PAGE 01 OF 08

Scale 1"=50'

**ALTA\ACSM**  
**Land Title**  
**Survey**

of 3.67 Wolf Point Plaza, being a subdivision of the south 30 acres of the west half of the southwest quarter of Section 17, Township 36 North, Range 12 East of the Third Principal Meridian in Cook County, Illinois.

**Craig R. Knoche & Associates**  
 Civil Engineers, P.C.  
 Illinois Registered Design Firm 3763  
 24 North Bennett Street • Geneva, Illinois 60134 • phone (630) 845-1270 • fax (630) 845-1275

- Civil Engineers
- Surveyors
- Land Planners

date: 11-25-15  
 file: 15-056LT  
 job: 15-056

Sheet 1 of 1





**Partition Type Legend**

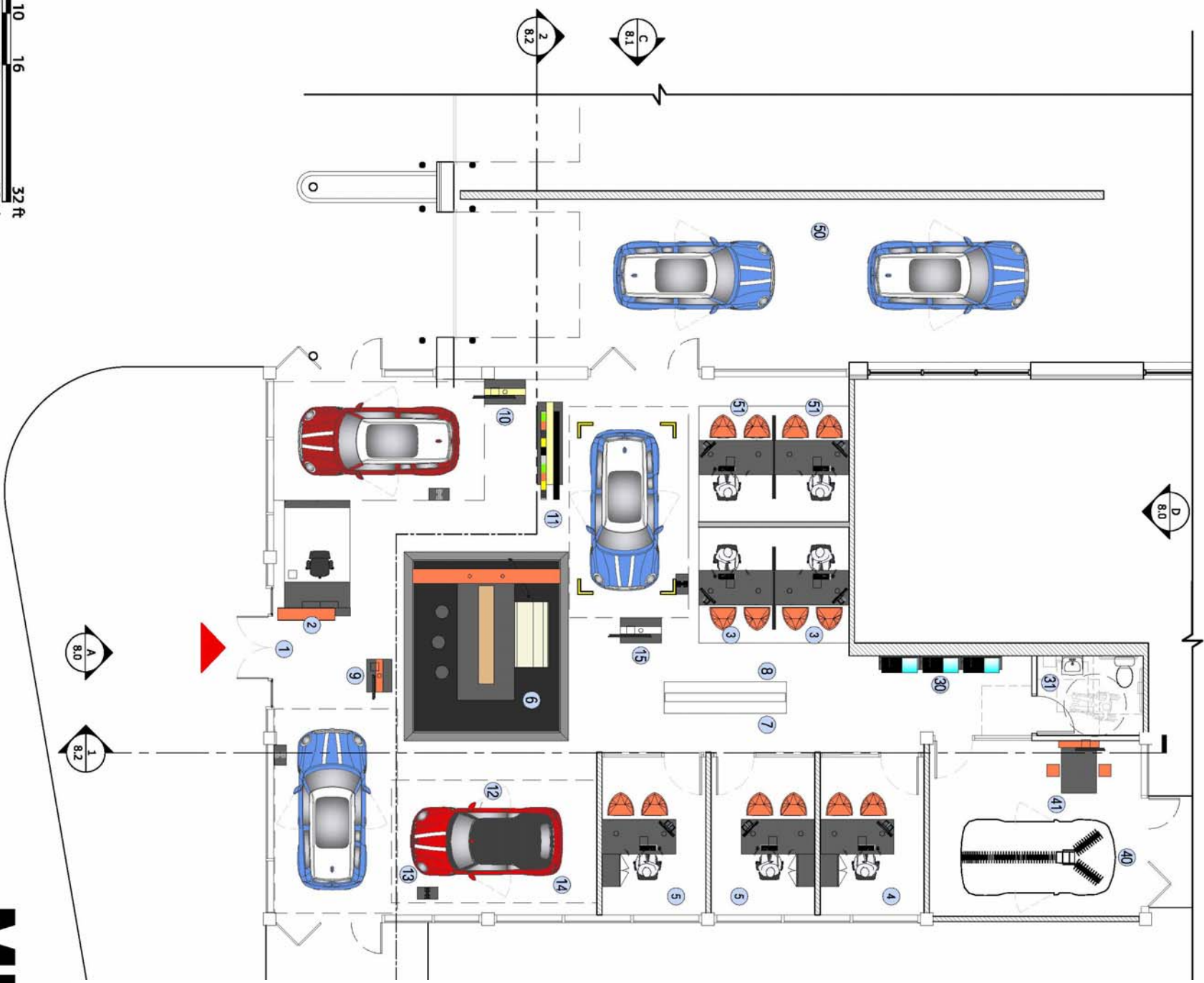
	Existing Wall
	New Half Wall
	New Wall



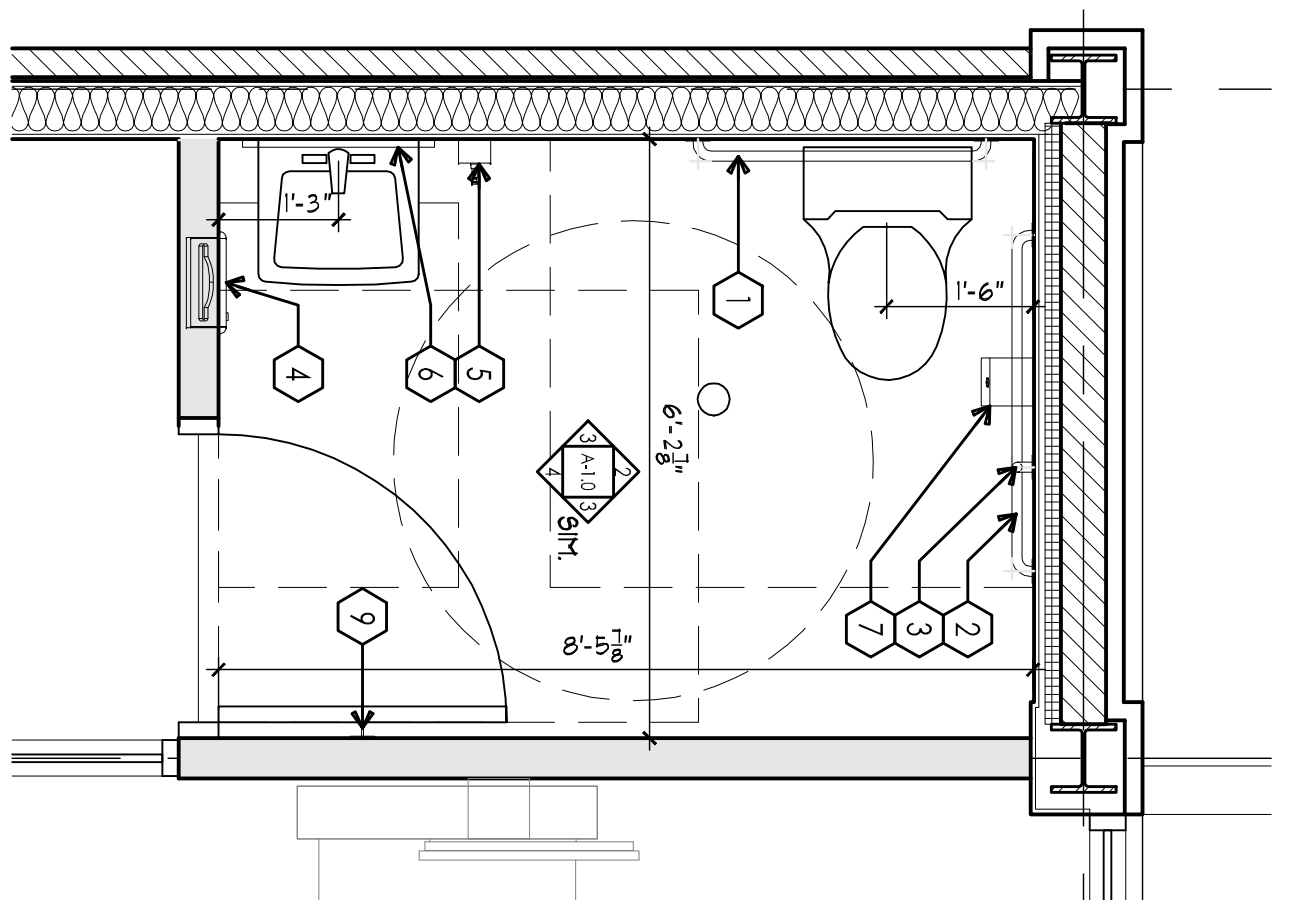
# MINI OF ORLAND PARK

## 3.2 Proposed Floor Plan

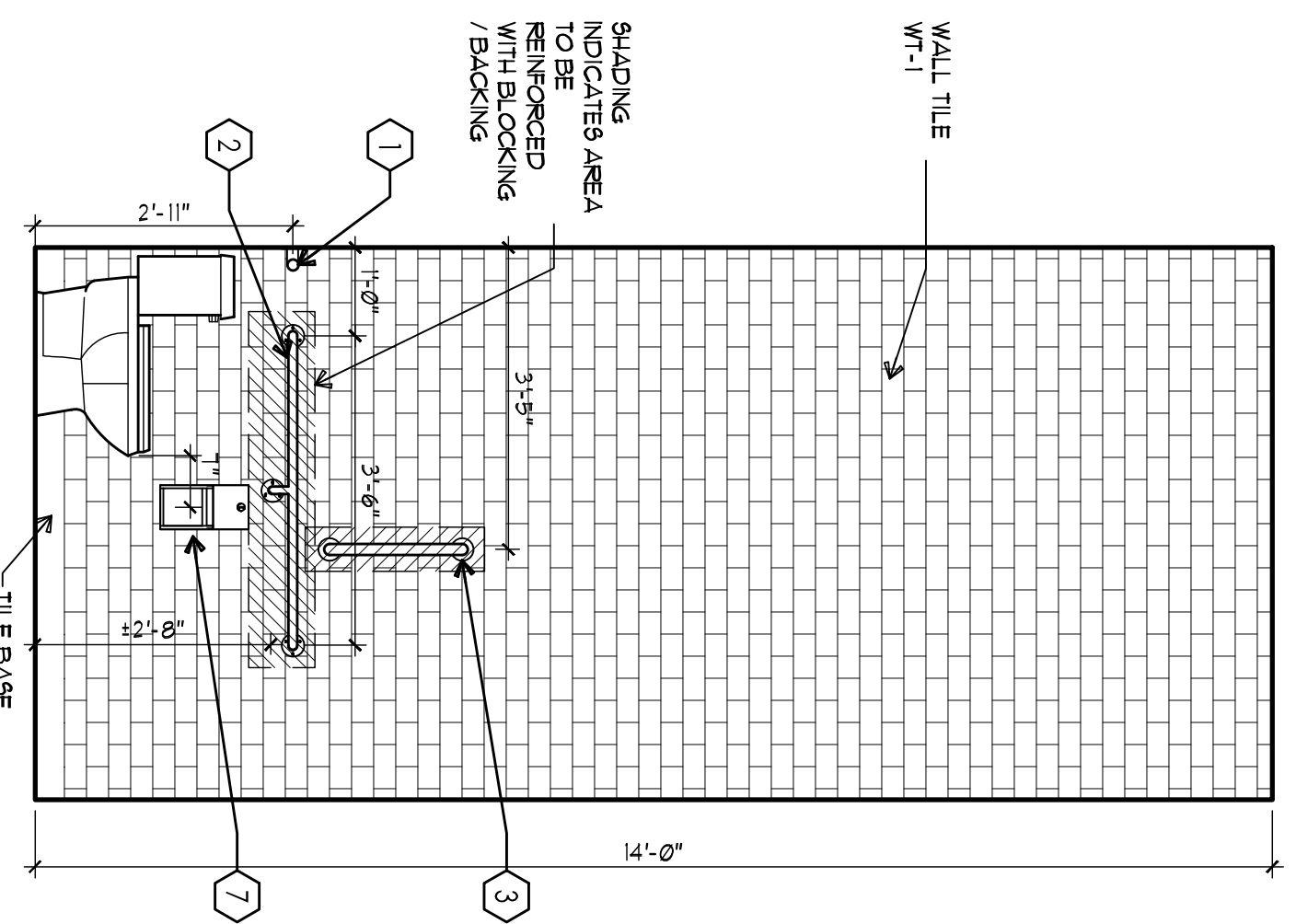
- Showroom**
- 1 Customer Entrance
- 2 MINI Reception Counter (Small)
- 3 Motoring Advisor
- 4 FSI Office
- 5 Sales Manager/General Mgrm.
- 6 MINI HUB (Small)
- 7 MINI History Wall
- 8 MINI Safety Wall
- 9 MINI Welcome Frame
- 10 MINI Digital Frame - Yellow
- 11 Color & Material Display
- 12 John Cooper Product Experience
- 13 John Cooper Digital Frame
- 14 John Cooper Accessory Display
- 15 MINI Digital Frame - White
- Customer Lounge**
- 30 Accessory Display
- 31 Restroom
- New Vehicle Delivery**
- 40 Handover Experience
- 41 Handover Desk
- Service**
- 50 Existing Service Drive
- 51 Service Advisors



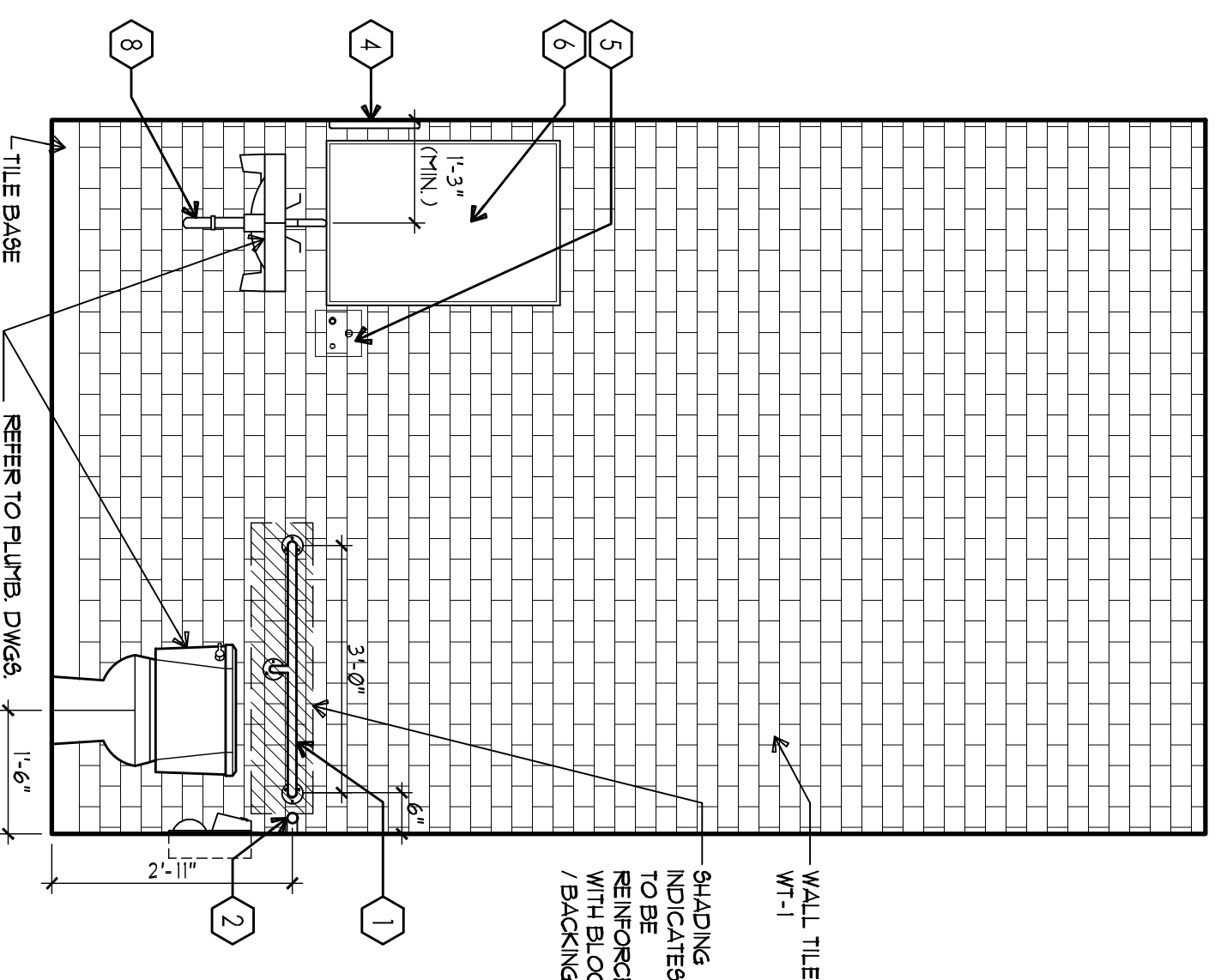




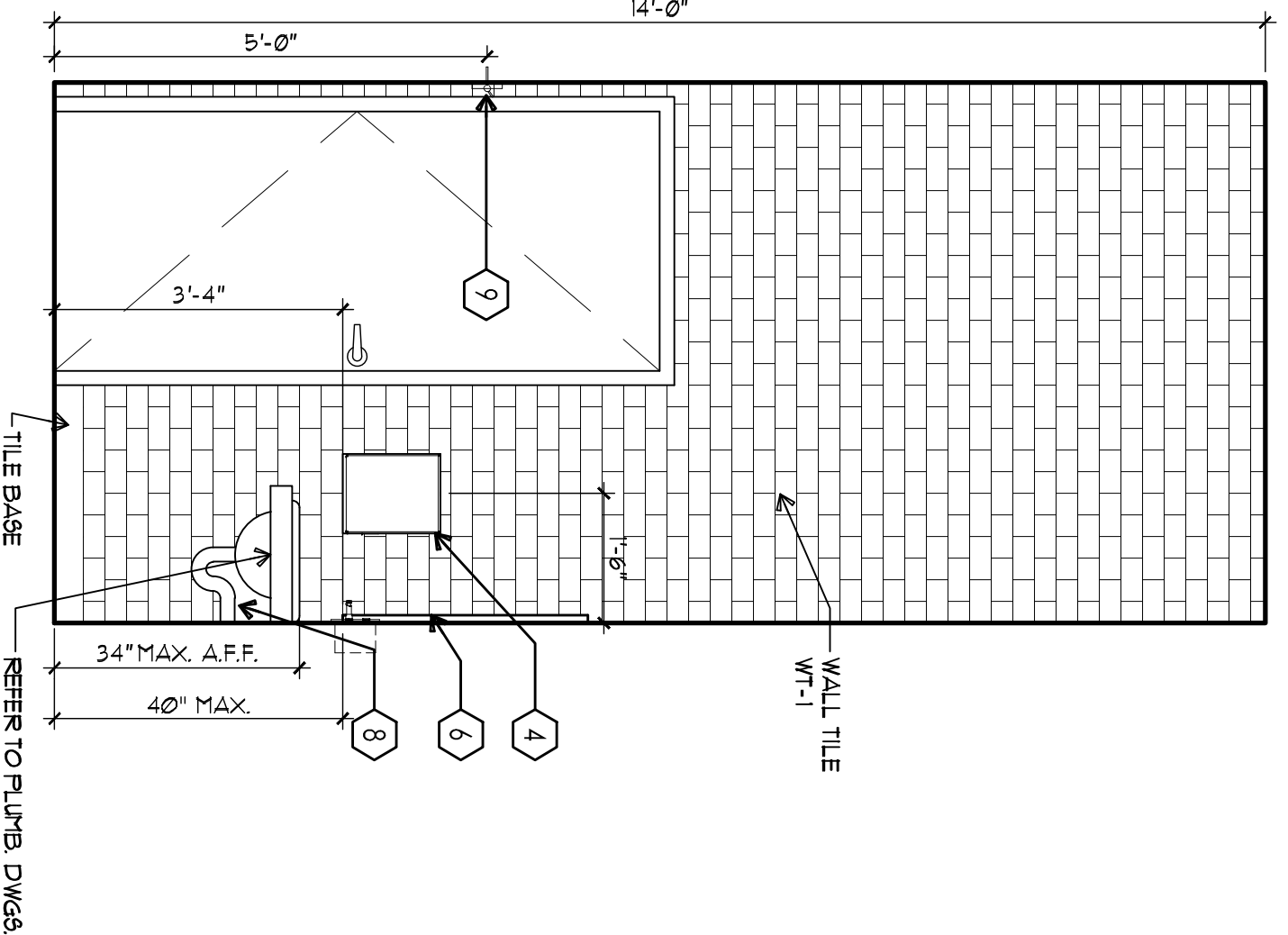
**TOILET 106**  
**ENLARGED PLAN**  
 A-1.0  
 1/2" = 1'-0"



**TOILET 102**  
**NORTH INT. ELEVATION**  
 A-1.0  
 1/2" = 1'-0"



**TOILET 102**  
**WEST INT. ELEVATION**  
 A-1.0  
 1/2" = 1'-0"

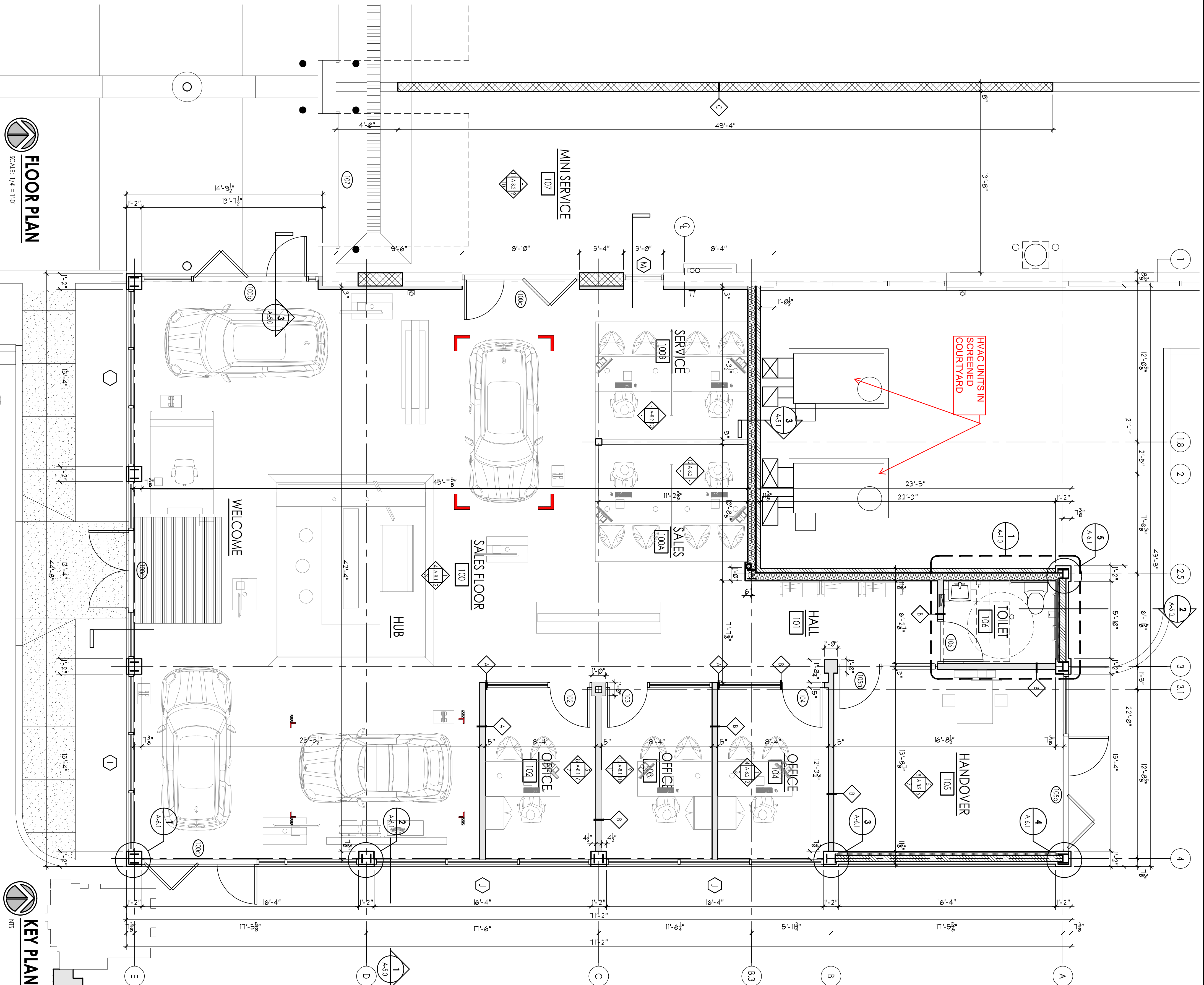


**TOILET 102**  
**SOUTH INT. ELEVATION**  
 A-1.0  
 1/2" = 1'-0"

ITEM	DESCRIPTION	CAT. NO.	NOTES	ITEM	DESCRIPTION	CAT. NO.	NOTES
1	9.9. GRAB BARS W/ SWAP FLANGE 36"	SERIES 3800	REINFORCING AS REQUIRED	6	9.9. 24" x 36" SURFACE MOUNTED ANGLE FRAMED MIRROR	8660	
2	9.9. GRAB BARS W/ SWAP FLANGE 42"	SERIES 3800	REINFORCING AS REQUIRED	7	SURFACE MOUNT TOILET TISSUE DISPENSER	9030	
3	9.9. GRAB BARS W/ SWAP FLANGE 48" (FURN.)	SERIES 3800	REINFORCING AS REQUIRED	8	PROTECTIVE PIPE COVERS	VALUED BY TRIBEIRO COLOR FURNIT	
4	RECESSED PAPER TOWEL DISPENSER (FURN.)	9481	COORD. INSTALL W/ WALL FINISHING & SWITCH	9	CLOTHES HOOK	122	
5	SURFACE MOUNT SOAP DISPENSER	9343					

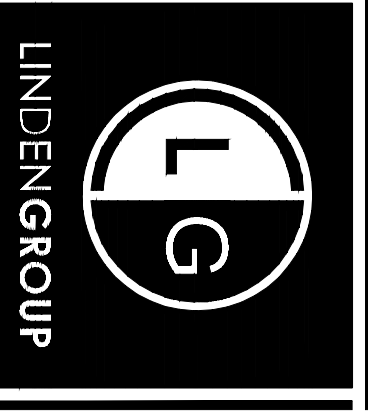
**TOILET ACCESSORY SCHEDULE**

ACCESSORY NOTES:  
 1. ACCESSORIES LISTED ABOVE ARE BASED ON AMERICAN SPECIALTIES, INC. ALTERNATES OF EQUAL OR BETTER QUALITY, AT THE OWNER'S APPROVAL, SHALL BE ACCEPTABLE.  
 2. COORDINATE WITH ACCESSIBILITY REQUIREMENTS - SHEETS A-9.0 AND A-9.1  
 3. SEE BACKING/BLOCKING DETAILS 1/2/A-6.0



**FLOOR PLAN**  
 SCALE: 1/4" = 1'-0"

**KEY PLAN**  
 NTS



ARCHITECTURE  
 LAND PLANNING  
 INTERIOR ARCHITECTURE  
 LANDSCAPE ARCHITECTURE  
 10100 ORLAND PARKWAY, SUITE 110  
 ORLAND PARK, ILLINOIS 60467  
 P: 708.802.8230  
 F: 708.802.8233  
 WWW.LINDBERGGRUP.COM

Addition for:  
**MINI of Orland Park**  
 11030 West 159th Street  
 Orland Park, IL 60467

**E. ANTHONY, INC.**  
 Complete Construction Services  
 18521 Spring Creek Dr. - Unit F Tinley Park, IL 60477  
 Ph: 708.802.8230 Fax: 708.802.8233

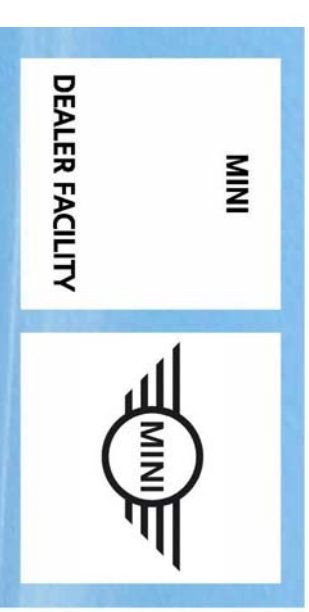
STATE OF ILLINOIS  
 WATER  
 CARRIER  
 NO. 018888  
 LICENSED PROFESSIONAL ARCHITECT  
 PROJECT NO. 2015-0065

DATE: 09.04.2015  
 DRAWN: GWH  
 PROJECT NUMBER: 2015-0065  
 DESCRIPTION: PROPOSED SITE PLAN  
 ISSUE TO ORLAND PARK FOR SPECIAL USE  
 PROGRESS REVIEW  
 REVISED ELEVATIONS  
 PROGRESS REVIEW  
 90% MINI REVIEW  
 ISSUED FOR BID & PERMIT

DATE: 09-04-2015  
 DATE: 10-29-2015  
 DATE: 11-09-2015  
 DATE: 11-25-2015  
 DATE: 12-18-2015  
 DATE: 01-05-2016  
 DATE: 02-04-2016  
 PROJECT NUMBER: 2015-0065  
 DRAWN BY: GWH, MAG  
 DRAWING BY: GWH, MAG

SHEET NAME: A-1.0  
 PAGE 3 OF 8  
 SHEET 3 OF 19



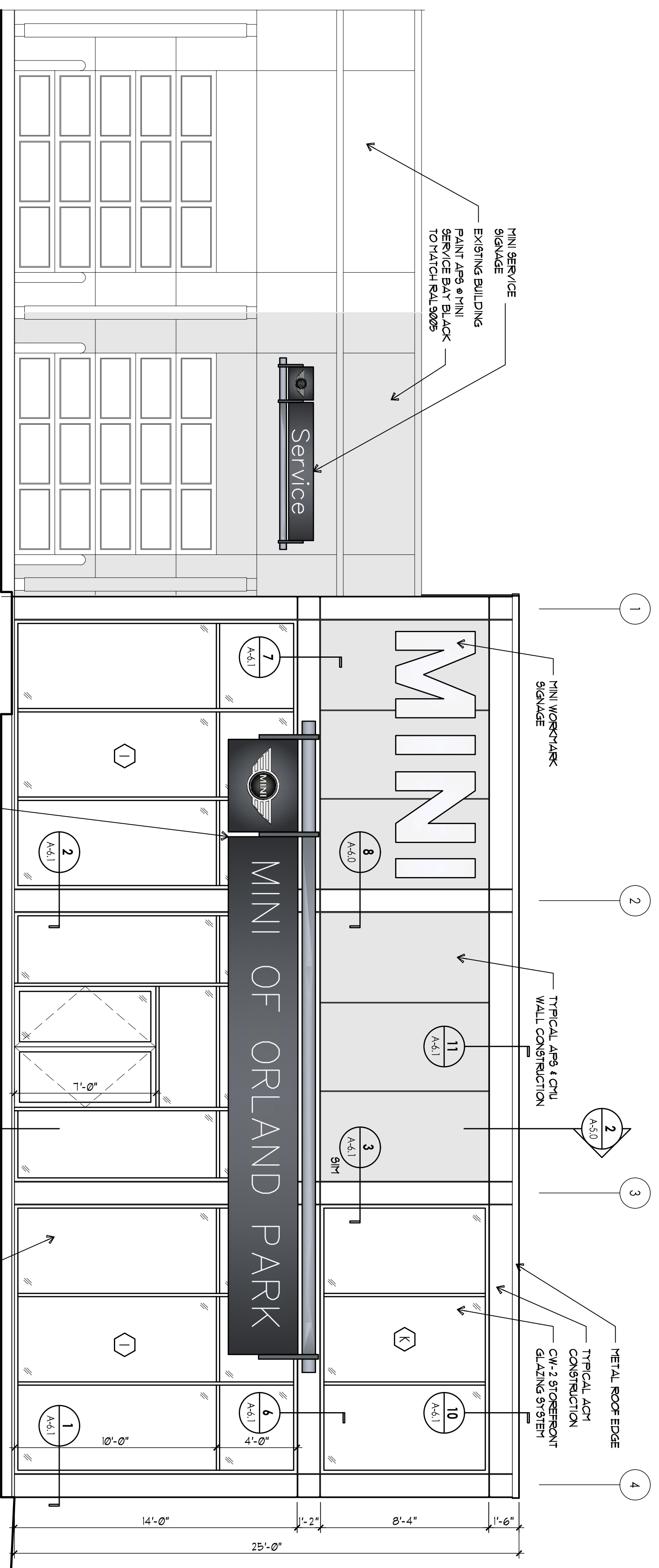


# MINI OF ORLAND PARK

CONCEPT RENDERING, REFER TO  
PAGES 5 AND 6 FOR FINAL FINISH  
LOCATIONS

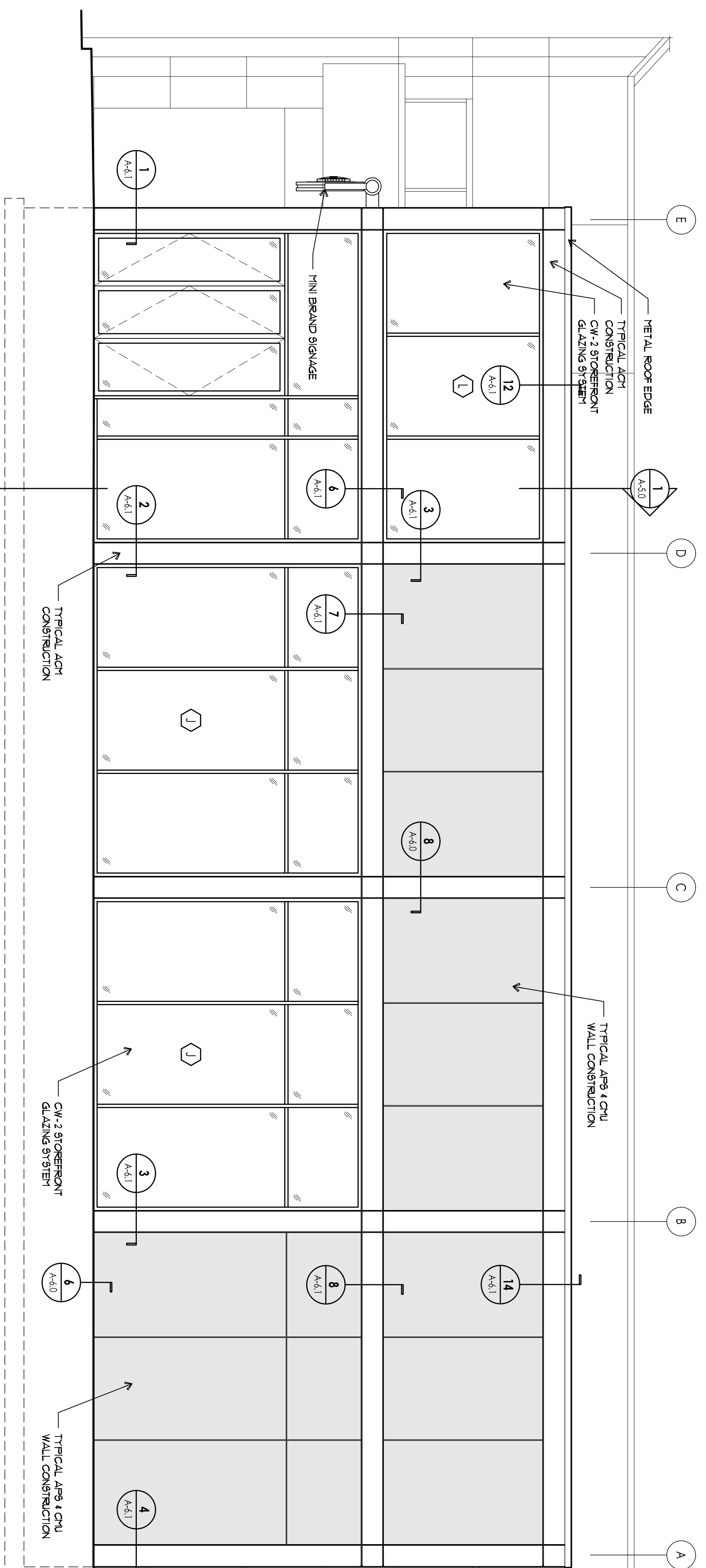
11030 W 159th St  
Orland Park, IL 60467  
Central Region

New Construction  
Design Intent Document

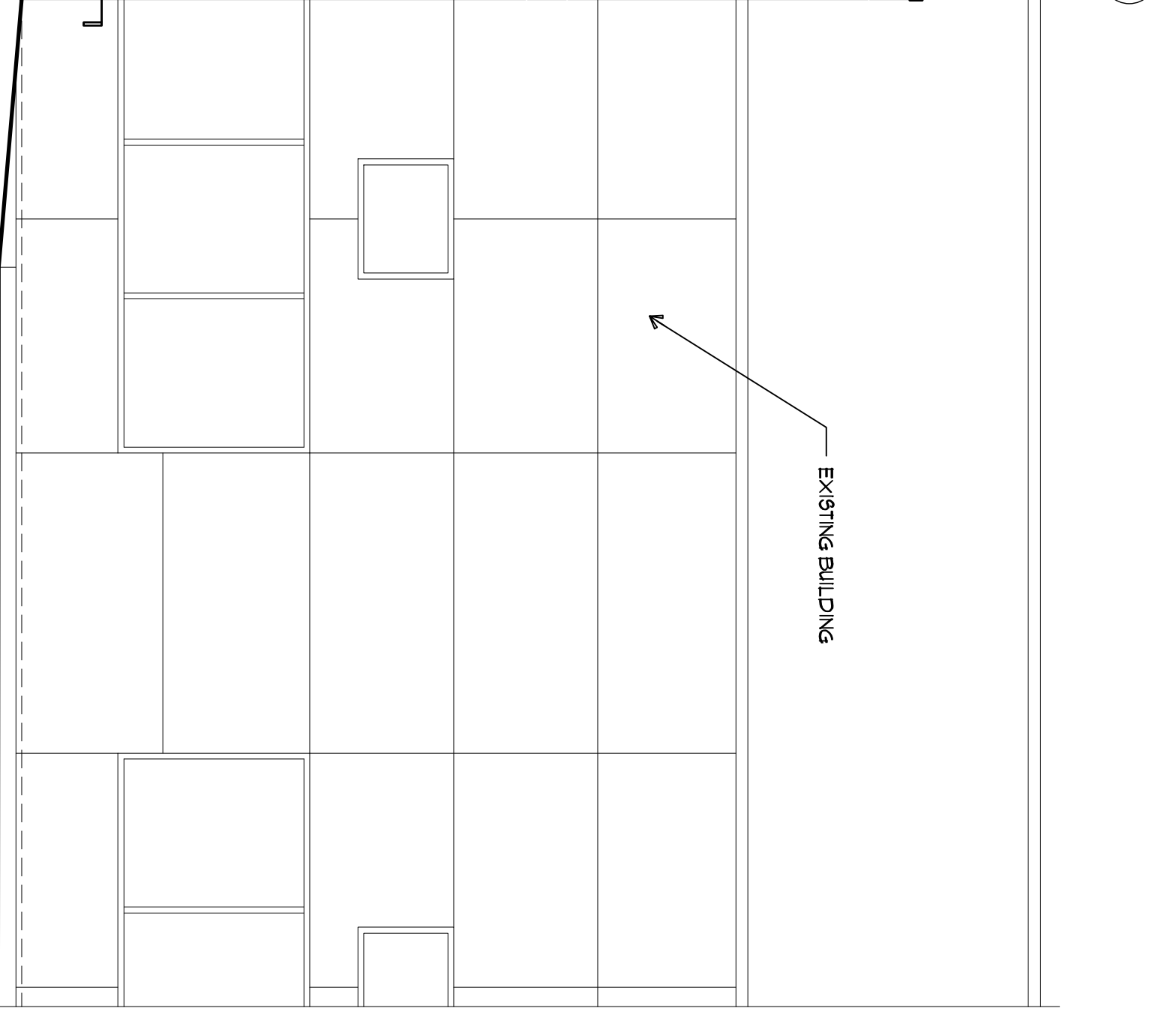


**SOUTH ELEVATION**  
 1/4" = 1'-0"

- GENERAL ELEVATION NOTES**
1. REFER TO FINAL PRODUCT SELECTION(S) MANUFACTURERS INSTALLATION INSTRUCTIONS AND SPECIFICATIONS FOR ADDITIONAL INFORMATION REGARDING ALL EXTERIOR FINISHES.
  2. ELEVATION NOTES AND TAGS ARE TYPICAL FOR ALL SIMILAR MATERIALS ON SAME ELEVATION AND ALL FOUR SIDES OF BUILDING.
  3. ALL EXTERIOR CALLING AND FILLER MATERIAL TO MATCH THE COLOR(S) OF ADJACENT MATERIAL(S).
  4. VERIFY ALL MATERIALS, COLORS FINISHES, ETC. WITH OWNER/ARCHITECT PRIOR TO ORDERING OR BEGINNING CONSTRUCTION.
  5. SEE SECTIONS ON SHEET A-5.0 FOR TYPICAL CONSTRUCTION NOTES AND DETAIL INFORMATION.
  6. ALL STOREFRONT SHALL BE KAMMEER 451T BLACK ANODIZED.
  1. SEE SHEET A-8.0 FOR FINISHES



**EAST ELEVATION**  
 1/4" = 1'-0"



EXISTING BUILDING

*Signature*  
 STATE OF ILLINOIS  
 WALTER  
 CURRIER  
 ARCHITECT  
 LICENSE NO. 018887  
 PROJECT ARCHITECT

**EAI E. ANTHONY, INC.**  
 Complete Construction Services  
 18521 Spring Creek Dr. - Unit F Tinley Park, IL 60477  
 Ph: 708.802.8230 Fax: 708.802.8233

Addition for:  
**MINI of Orland Park**  
 11030 West 159th Street  
 Orland Park, IL 60467

ARCHITECTURE  
 LAND PLANNING  
 INTERIOR ARCHITECTURE  
 LANDSCAPE ARCHITECTURE  
 10100 ORLAND PARKWAY, SUITE 110  
 ORLAND PARK, ILLINOIS 60467  
 P: 708.802.8230  
 WWW.LINDENGROUPINC.COM



SHEET NAME  
**A-4.0**  
 SHEET 6 OF 19

PAGE 5 OF 8

**ELEVATIONS**

FINAL REVIEW  
 COPYRIGHT: LINDEN GROUP INC.  
 ALL RIGHTS RESERVED. THIS DOCUMENT AND ANYTHING CONTAINED HEREIN IS THE PROPERTY OF LINDEN GROUP INC. AND IS TO BE USED ONLY FOR THE PROJECT AND SITE SPECIFICALLY IDENTIFIED HEREIN. NO OTHER REPRODUCTION OR TRANSMISSION IS PERMITTED WITHOUT THE WRITTEN PERMISSION OF LINDEN GROUP INC.

DATE: 09-04-2015  
 DRAWN BY: GDH, MAG  
 DRAWING BY: GDH, MAG

PROJECT NUMBER: 2015-0065

DATE: 09.04.2015 GDH  
 10.29.2015 GWC  
 11.09.2015  
 11-25-2015 MAG  
 12-18-2015 MAG  
 01-05-2015 MAG  
 02-04-2016 MAG

DESCRIPTION: PROPOSED SITE PLAN  
 ISSUE TO ORLAND PARK FOR SPECIAL USE  
 PROGRESS REVIEW  
 REVISED ELEVATIONS  
 PROGRESS REVIEW  
 90% MINI REVIEW  
 ISSUED FOR BID & PERMIT





Finished Material Legend						
CODE	MATERIAL	MANUFACTURER	PATTERN/ NAME/ COLOR	SIZE/TYPE/ SHEEN	REMARKS	MANUFACTURER/ ADDRESS/ CONTACT NAME/ CONTACT #/ EMAIL
Exterior	ALUMINUM	ACM	ALUMINUM	ALUCOBOND ALCOA ALPOLIC ACM	NO HIGH GLOSS PAINT	
		APS	ALUMINUM PANEL SYSTEM	ALUCOBOND ALCOA TRESPA	STANDARD FINISH	
		RSCRN	ALUMINUM	SHILDAN	STANDARD FINISH	
		CW-1	BUTT-JOINED GLAZING SYSTEM	BLACK	ANODIZED	
		CW-2	CENTER LOADED GLAZING SYSTEM	BLACK	ANODIZED	
MISC	PLSTR	PLASTER	BLACK TO MATCH RAL 9004	SMOOTH FINISH		

# MINI OF ORLAND PARK

10.1.0 MINI Finish Material Legend





# MINI OF ORLAND PARK

9.2 Interior Perspective